



## FY 2024 Removals, Exits and Out of Home Summary (FACTS)

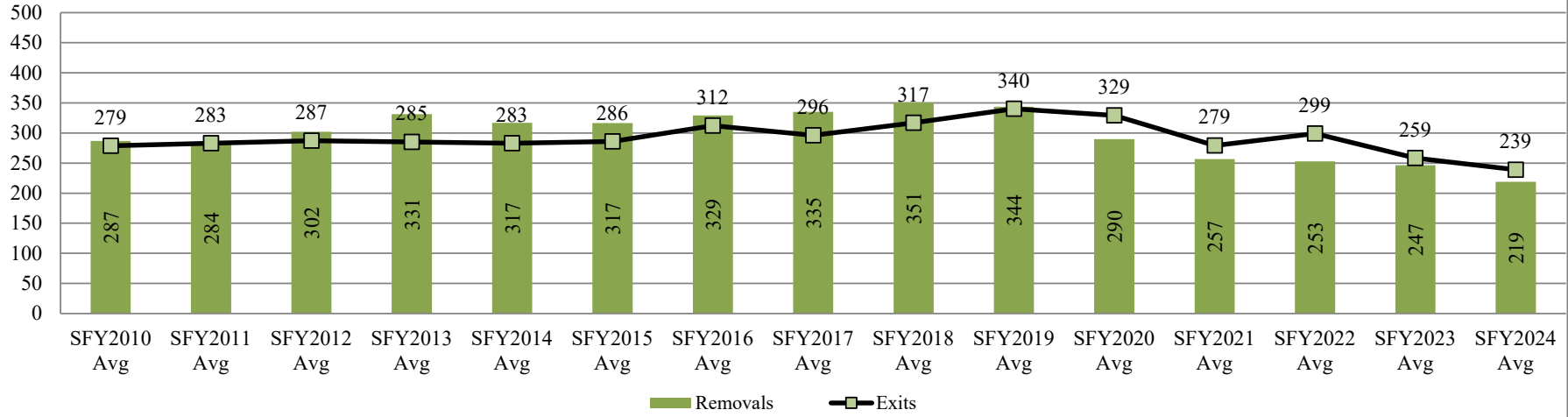
This report contains information on the number children removed into foster care in a given month, the number of children who exited foster care placement outside of their home in a given month, and the number of children who are in a foster care placement outside of their home (OOH) on the last day of each month. Information is provided by DCF Region and County.

6/24/2024

By DCF Region	Type of Information	Jul	Aug	Sep	Oct	Nov	Dec	Jan	Feb	Mar	Apr	May	Jun	Fiscal year Total	Fiscal year Average
Kansas City Region	Removals	25	39	30	31	28	21	27	59	38	41	54	0	393	36
Kansas City Region	Exits	42	48	25	38	44	42	32	46	41	22	40	0	420	38
Kansas City Region	OOH Last Day of the Month	1095	1086	1090	1085	1068	1052	1055	1065	1074	1097	1109	0		1,080
Northeast Region	Removals	18	48	8	44	40	23	31	23	29	28	28	0	320	29
Northeast Region	Exits	43	45	30	31	48	19	33	42	25	26	58	0	400	36
Northeast Region	OOH Last Day of the Month	940	941	921	942	941	946	943	915	917	931	883	0		929
Northwest Region	Removals	25	38	19	47	22	23	32	40	19	29	20	0	314	29
Northwest Region	Exits	43	44	25	22	44	26	11	16	30	26	36	0	323	29
Northwest Region	OOH Last Day of the Month	559	553	545	572	555	549	570	588	578	592	576	0		567
Southeast Region	Removals	38	26	21	32	16	23	21	26	19	36	26	0	284	26
Southeast Region	Exits	33	52	25	22	18	54	27	34	45	26	28	0	364	33
Southeast Region	OOH Last Day of the Month	730	698	696	705	719	685	684	668	650	655	655	0		686
Southwest Region	Removals	38	66	26	39	40	21	34	43	25	29	46	0	407	37
Southwest Region	Exits	46	65	48	38	57	36	43	52	26	27	52	0	490	45
Southwest Region	OOH Last Day of the Month	918	922	901	907	892	862	850	849	847	847	843	0		876
Wichita Region	Removals	79	60	56	81	60	31	64	56	64	75	62	0	688	63
Wichita Region	Exits	70	98	49	36	75	51	31	43	49	53	77	0	632	57
Wichita Region	OOH Last Day of the Month	1794	1755	1759	1803	1793	1765	1803	1825	1848	1859	1857	0		1,806
State	Removals	223	277	160	274	206	142	209	247	194	238	236	0	2,406	219
State	Exits	277	352	202	187	286	228	177	233	216	180	291	0	2,629	239
State	OOH Last Day of the Month	6036	5955	5912	6014	5968	5859	5905	5910	5914	5981	5923	0		5,943

\*Beginning in SFY2015 Discharges were replaced by Exits from Out of Home Placements.

### Fiscal Year Average Removals and Exits SFY2010-SFY2024



**Data Sources:**

**Removals-** from FACTS

**Exits-** from FACTS

**OOH Last Day of the Month-** from FACTS

**Information By County grouped in DCF Regions**

County	Type of Information	Jul	Aug	Sep	Oct	Nov	Dec	Jan	Feb	Mar	Apr	May	Jun	Fiscal year Total	Fiscal year Average
AL ALLEN	Removals	2	4	8	1	1	0	5	3	3	5	9	0	41	4
AL ALLEN	Exits	2	5	2	1	2	6	1	4	3	3	7	0	36	3
AL ALLEN	OOH Last Day of the Month	48	47	54	54	54	49	52	52	54	55	60	0		53
AN ANDERSON	Removals	0	0	0	0	0	0	0	0	0	2	0	0	2	2
AN ANDERSON	Exits	0	1	0	1	0	0	0	0	1	0	0	0	3	1
AN ANDERSON	OOH Last Day of the Month	9	8	8	10	11	7	6	6	6	7	7	0		8
AT ATCHISON	Removals	0	4	3	0	2	2	2	0	1	1	8	0	23	3
AT ATCHISON	Exits	0	0	0	1	2	2	3	4	0	1	3	0	16	2
AT ATCHISON	OOH Last Day of the Month	50	54	58	55	55	58	58	53	54	53	58	0		55
BA BARBER	Removals	0	0	0	0	0	0	0	0	2	0	2	0	4	2
BA BARBER	Exits	0	0	0	0	1	0	0	0	2	1	3	0	7	2
BA BARBER	OOH Last Day of the Month	20	20	20	20	19	19	19	19	21	18	17	0		19
BB BOURBON	Removals	2	3	2	1	0	4	1	0	0	0	0	0	13	2
BB BOURBON	Exits	4	2	4	0	3	8	2	2	1	1	1	0	28	3
BB BOURBON	OOH Last Day of the Month	47	48	48	47	44	40	41	37	37	35	34	0		42
BR BROWN	Removals	6	12	0	4	7	4	1	1	1	5	3	0	44	4
BR BROWN	Exits	9	2	2	3	2	1	7	5	2	4	8	0	45	4
BR BROWN	OOH Last Day of the Month	68	77	77	83	86	87	83	79	78	79	75	0		79
BT BARTON	Removals	9	0	6	10	10	2	7	2	3	1	5	0	55	6
BT BARTON	Exits	3	7	0	2	2	1	1	7	2	1	12	0	38	4
BT BARTON	OOH Last Day of the Month	62	57	63	72	82	82	85	84	83	83	77	0		75





HM HAMILTON	Removals	0	0	0	0	0	0	0	0	0	0	0	1	0	1	1
HM HAMILTON	Exits	0	0	0	0	0	0	0	1	0	0	0	0	0	1	1
HM HAMILTON	OOH Last Day of the Month	9	9	9	9	9	9	9	8	8	8	9	0			9
HP HARPER	Removals	0	2	1	1	1	1	0	5	5	0	0	0	0	16	2
HP HARPER	Exits	1	3	0	0	0	0	1	1	0	5	1	0	0	12	2
HP HARPER	OOH Last Day of the Month	21	21	21	22	23	24	26	26	32	25	24	0			24
HS HASKELL	Removals	1	0	0	1	0	0	0	1	0	0	0	0	0	3	1
HS HASKELL	Exits	0	0	0	0	0	0	0	0	0	1	0	0	0	1	1
HS HASKELL	OOH Last Day of the Month	2	2	2	3	3	3	3	4	4	3	3	0			3
HV HARVEY	Removals	2	1	0	1	3	1	2	6	3	4	4	0	0	27	3
HV HARVEY	Exits	2	4	6	2	7	1	2	4	2	0	2	0	0	32	3
HV HARVEY	OOH Last Day of the Month	56	56	51	52	46	46	45	53	54	59	61	0			53
JA JACKSON	Removals	0	1	0	0	4	1	0	4	5	3	0	0	0	18	3
JA JACKSON	Exits	1	2	0	0	0	0	6	2	0	0	8	0	0	19	4
JA JACKSON	OOH Last Day of the Month	36	33	33	33	36	37	31	35	40	40	33	0			35
JF JEFFERSON	Removals	0	0	0	2	0	0	0	1	0	0	0	0	0	3	2
JF JEFFERSON	Exits	6	1	1	0	1	0	1	0	0	4	3	0	0	17	2
JF JEFFERSON	OOH Last Day of the Month	21	20	19	22	21	19	19	19	18	15	11	0			19
JO JOHNSON	Removals	9	20	17	17	18	8	13	45	21	26	31	0	0	225	20
JO JOHNSON	Exits	19	28	9	25	22	18	9	14	18	10	19	0	0	191	17
JO JOHNSON	OOH Last Day of the Month	396	386	388	388	383	371	377	407	409	428	441	0			398
JW JEWELL	Removals	1	0	2	0	0	0	0	0	0	0	0	0	0	3	2
JW JEWELL	Exits	0	1	0	0	3	2	0	0	0	1	1	0	0	8	2
JW JEWELL	OOH Last Day of the Month	10	9	11	11	8	6	6	6	6	5	4	0			7
KE KEARNY	Removals	0	1	0	0	0	0	0	0	0	0	0	0	0	1	1
KE KEARNY	Exits	0	0	1	0	0	0	1	1	0	0	0	0	0	3	1
KE KEARNY	OOH Last Day of the Month	15	16	15	15	15	15	14	13	13	13	13	0			14
KM KINGMAN	Removals	0	0	0	2	0	0	0	3	0	1	0	0	0	6	2
KM KINGMAN	Exits	3	0	2	2	2	0	1	1	0	1	3	0	0	15	2
KM KINGMAN	OOH Last Day of the Month	21	21	19	19	19	17	16	16	16	16	13	0			18
KW KIOWA	Removals	0	0	0	0	0	0	0	0	1	0	0	0	0	1	1
KW KIOWA	Exits	0	0	1	0	0	0	0	0	0	0	0	0	0	1	1
KW KIOWA	OOH Last Day of the Month	5	6	2	2	2	2	2	2	3	3	3	0			3
LB LABETTE	Removals	0	3	1	4	4	0	1	5	2	3	1	0	0	24	3
LB LABETTE	Exits	2	3	0	2	1	4	3	6	5	4	3	0	0	33	3
LB LABETTE	OOH Last Day of the Month	66	64	65	66	69	70	70	64	60	61	57	0			65
LC LINCOLN	Removals	1	0	1	0	0	0	3	0	1	0	0	0	0	6	2
LC LINCOLN	Exits	0	1	2	1	0	0	0	0	0	0	0	0	0	4	1
LC LINCOLN	OOH Last Day of the Month	6	6	5	4	4	4	7	7	8	8	8	0			6
LE LANE	Removals	0	0	0	0	0	0	0	0	0	0	0	0	0	0	0
LE LANE	Exits	0	2	0	0	0	2	0	0	0	0	1	0	0	5	2
LE LANE	OOH Last Day of the Month	8	6	6	6	6	4	4	4	4	4	3	0			5
LG LOGAN	Removals	0	0	0	0	0	3	0	0	0	0	0	0	0	3	3
LG LOGAN	Exits	0	0	0	1	1	0	1	1	0	0	0	0	0	4	1
LG LOGAN	OOH Last Day of the Month	9	9	9	8	9	10	10	9	9	9	9	0			9
LN LINN	Removals	1	3	0	0	0	1	0	3	0	4	1	0	0	13	2
LN LINN	Exits	1	5	0	0	3	2	1	0	0	0	0	0	0	12	2
LN LINN	OOH Last Day of the Month	22	20	20	20	20	17	17	18	17	22	23	0			20
LV LEAVENWORTH	Removals	6	4	2	3	3	6	0	8	9	10	8	0	0	59	6
LV LEAVENWORTH	Exits	3	4	3	2	9	8	5	8	6	2	3	0	0	53	5

LV LEAVENWORTH	OOH Last Day of the Month	184	183	182	180	177	168	165	165	173	176	183	0		176
LY LYON	Removals	5	5	10	2	3	0	2	5	3	5	5	0	45	5
LY LYON	Exits	4	15	3	2	3	0	2	1	3	2	7	0	42	4
LY LYON	OOH Last Day of the Month	114	102	112	112	111	109	109	116	113	116	114	0		112
MC MITCHELL	Removals	0	0	1	0	0	0	0	0	0	0	0	0	1	1
MC MITCHELL	Exits	1	0	2	0	2	1	1	0	2	0	0	0	9	2
MC MITCHELL	OOH Last Day of the Month	13	13	12	12	9	8	7	7	5	6	6	0		9
ME MEADE	Removals	0	0	1	0	0	0	0	0	0	0	0	0	1	1
ME MEADE	Exits	0	0	0	0	0	0	2	0	0	0	0	0	2	2
ME MEADE	OOH Last Day of the Month	2	2	3	3	3	3	2	1	1	1	1	0		2
MG MONTGOMERY	Removals	13	0	1	0	0	0	3	0	1	3	0	0	21	4
MG MONTGOMERY	Exits	1	10	4	1	0	9	0	0	5	6	2	0	38	5
MG MONTGOMERY	OOH Last Day of the Month	119	106	103	102	101	93	96	96	93	89	87	0		99
MI MIAMI	Removals	1	0	0	0	0	0	1	1	0	1	1	0	5	1
MI MIAMI	Exits	0	2	1	0	0	0	0	0	2	1	0	0	6	2
MI MIAMI	OOH Last Day of the Month	26	24	23	23	23	23	24	24	24	23	24	0		24
MN MARION	Removals	0	1	0	0	0	0	2	0	0	0	1	0	4	1
MN MARION	Exits	1	0	1	0	2	1	0	0	1	0	0	0	6	1
MN MARION	OOH Last Day of the Month	12	13	12	12	10	9	11	11	10	10	11	0		11
MP MCPHERSON	Removals	0	7	1	0	0	2	1	4	0	2	1	0	18	3
MP MCPHERSON	Exits	9	5	2	0	3	1	1	1	0	1	3	0	26	3
MP MCPHERSON	OOH Last Day of the Month	41	43	41	41	34	34	34	35	35	36	34	0		37
MR MORRIS	Removals	0	0	0	0	0	1	0	0	0	5	0	0	6	3
MR MORRIS	Exits	0	0	0	0	0	0	0	0	0	0	0	0	0	0
MR MORRIS	OOH Last Day of the Month	2	2	2	2	2	3	2	2	2	8	7	0		3
MS MARSHALL	Removals	0	4	0	0	0	1	12	0	3	0	1	0	21	4
MS MARSHALL	Exits	1	0	1	2	0	0	0	2	0	0	3	0	9	2
MS MARSHALL	OOH Last Day of the Month	18	23	23	19	18	22	35	30	33	34	33	0		26
MT MORTON	Removals	0	0	0	0	0	0	0	0	0	0	0	0	0	0
MT MORTON	Exits	0	0	0	0	0	0	1	0	0	0	0	0	1	1
MT MORTON	OOH Last Day of the Month	3	3	3	3	3	3	2	2	2	2	2	0		3
NM NEMAHA	Removals	1	0	0	0	4	0	0	0	0	0	1	0	6	2
NM NEMAHA	Exits	1	1	0	0	0	1	0	0	0	0	0	0	3	1
NM NEMAHA	OOH Last Day of the Month	27	26	23	25	29	28	28	28	31	31	30	0		28
NO NEOSHO	Removals	0	1	1	3	3	5	0	0	3	2	5	0	23	3
NO NEOSHO	Exits	7	3	1	1	2	4	6	1	1	0	1	0	27	3
NO NEOSHO	OOH Last Day of the Month	54	51	51	53	53	54	49	47	50	52	57	0		52
NS NESS	Removals	0	0	0	1	0	0	0	0	0	0	0	0	1	1
NS NESS	Exits	0	0	0	0	0	0	0	0	0	0	0	0	0	0
NS NESS	OOH Last Day of the Month	0	0	0	1	1	1	1	1	1	1	1	0		1
NT NORTON	Removals	0	1	0	0	0	1	4	1	0	0	0	0	7	2
NT NORTON	Exits	0	1	4	1	0	0	1	0	1	0	3	0	11	2
NT NORTON	OOH Last Day of the Month	13	14	10	9	8	9	12	13	12	12	10	0		11
OB OSBORNE	Removals	0	0	0	0	0	1	1	0	2	0	1	0	5	1
OB OSBORNE	Exits	0	0	0	1	0	0	1	0	0	3	0	0	5	2
OB OSBORNE	OOH Last Day of the Month	3	3	3	3	3	4	3	3	6	3	4	0		3
OS OSAGE	Removals	1	0	0	4	2	0	1	0	4	2	1	0	15	2
OS OSAGE	Exits	0	3	0	2	0	3	0	0	2	1	0	0	11	2
OS OSAGE	OOH Last Day of the Month	23	20	21	23	24	22	23	24	26	27	28	0		24
OT OTTAWA	Removals	3	0	0	4	1	0	0	1	1	0	0	0	10	2

OT OTTAWA	Exits	1	0	0	0	3	0	0	0	4	0	1	0	9	2
OT OTTAWA	OOH Last Day of the Month	20	20	20	23	22	21	21	22	20	20	20	0		21
PL PHILLIPS	Removals	0	0	0	2	0	0	0	2	1	0	0	0	5	2
PL PHILLIPS	Exits	0	1	0	0	0	0	1	0	0	1	0	0	3	1
PL PHILLIPS	OOH Last Day of the Month	11	9	9	11	11	11	10	12	13	12	12	0		11
PN PAWNEE	Removals	0	0	0	1	0	1	4	1	0	0	0	0	7	2
PN PAWNEE	Exits	0	0	0	1	1	1	0	0	0	0	2	0	5	1
PN PAWNEE	OOH Last Day of the Month	18	18	17	17	16	16	20	21	21	21	19	0		19
PR PRATT	Removals	1	2	0	4	0	0	0	0	0	5	0	0	12	3
PR PRATT	Exits	0	9	1	3	0	0	0	0	2	0	3	0	18	4
PR PRATT	OOH Last Day of the Month	29	22	25	24	25	25	27	27	27	29	26	0		26
PT POTTAWATOMIE	Removals	3	0	0	2	4	1	6	1	2	1	0	0	20	3
PT POTTAWATOMIE	Exits	2	0	1	1	1	0	1	4	1	2	2	0	15	2
PT POTTAWATOMIE	OOH Last Day of the Month	32	32	31	32	36	36	41	36	38	37	34	0		35
RA RAWLINS	Removals	1	0	0	0	0	0	1	1	0	0	2	0	5	1
RA RAWLINS	Exits	0	0	0	0	0	0	0	0	0	1	0	0	1	1
RA RAWLINS	OOH Last Day of the Month	4	4	4	4	4	4	5	6	6	5	7	0		5
RC RICE	Removals	0	0	0	0	0	1	0	3	2	0	0	0	6	2
RC RICE	Exits	1	0	0	0	0	4	0	1	5	0	4	0	15	3
RC RICE	OOH Last Day of the Month	24	24	24	26	26	23	23	25	23	22	18	0		23
RH RUSH	Removals	0	0	0	2	0	0	0	0	0	0	1	0	3	2
RH RUSH	Exits	0	0	2	0	2	0	1	0	0	0	0	0	5	2
RH RUSH	OOH Last Day of the Month	9	10	8	10	8	7	7	6	6	6	7	0		8
RL RILEY	Removals	4	8	7	5	1	4	2	0	1	3	2	0	37	4
RL RILEY	Exits	8	4	3	5	7	8	1	4	5	3	3	0	51	5
RL RILEY	OOH Last Day of the Month	71	75	81	81	75	72	73	71	60	64	66	0		72
RN RENO	Removals	10	9	3	6	3	3	8	11	2	3	8	0	66	6
RN RENO	Exits	14	13	14	16	10	7	8	6	8	3	4	0	103	9
RN RENO	OOH Last Day of the Month	234	226	216	206	205	197	197	201	197	194	198	0		206
RO ROOKS	Removals	1	1	0	5	1	0	0	0	3	0	0	0	11	2
RO ROOKS	Exits	0	2	0	0	0	0	0	0	0	1	1	0	4	1
RO ROOKS	OOH Last Day of the Month	8	7	7	12	13	12	12	12	15	15	13	0		11
RP REPUBLIC	Removals	0	1	0	0	0	0	0	0	0	0	2	0	3	2
RP REPUBLIC	Exits	0	0	0	0	0	0	0	0	0	0	0	0	0	0
RP REPUBLIC	OOH Last Day of the Month	4	5	5	5	5	5	5	5	5	5	7	0		5
RS RUSSELL	Removals	5	2	0	0	0	0	0	2	0	0	4	0	13	3
RS RUSSELL	Exits	3	0	0	0	0	0	1	1	0	0	1	0	6	2
RS RUSSELL	OOH Last Day of the Month	18	20	20	20	20	20	19	20	20	20	23	0		20
SA SALINE	Removals	5	8	4	7	2	2	1	6	0	6	1	0	42	4
SA SALINE	Exits	4	4	5	5	2	6	2	1	4	8	3	0	44	4
SA SALINE	OOH Last Day of the Month	96	97	93	97	97	98	98	97	94	97	93	0		96
SC SCOTT	Removals	4	0	0	0	0	0	1	0	0	0	0	0	5	3
SC SCOTT	Exits	0	3	2	2	0	0	0	0	1	2	2	0	12	2
SC SCOTT	OOH Last Day of the Month	31	28	26	24	25	25	26	24	23	21	20	0		25
SD SHERIDAN	Removals	0	0	0	2	0	0	0	1	0	0	0	0	3	2
SD SHERIDAN	Exits	0	0	0	0	0	0	0	0	0	0	0	0	0	0
SD SHERIDAN	OOH Last Day of the Month	1	1	1	3	3	3	3	4	4	4	4	0		3
SF STAFFORD	Removals	0	3	0	2	1	0	0	1	0	0	3	0	10	2
SF STAFFORD	Exits	1	0	1	0	0	0	0	3	1	1	0	0	7	1
SF STAFFORD	OOH Last Day of the Month	10	14	13	15	16	16	16	14	13	13	16	0		14

SG SEDGWICK	Removals	58	43	41	51	53	25	49	36	43	50	46	0	495	45
SG SEDGWICK	Exits	55	65	34	22	57	39	19	28	37	33	49	0	438	40
SG SEDGWICK	OOH Last Day of the Month	1294	1274	1272	1305	1308	1289	1318	1338	1347	1367	1366	0		1,316
SH SHERMAN	Removals	1	1	0	2	1	0	1	6	0	0	1	0	13	2
SH SHERMAN	Exits	0	0	0	0	0	1	0	0	0	0	2	0	3	2
SH SHERMAN	OOH Last Day of the Month	16	17	17	19	20	19	19	23	26	26	24	0		21
SM SMITH	Removals	0	0	0	0	0	0	0	0	0	0	0	0	0	0
SM SMITH	Exits	1	2	0	0	0	0	0	0	0	0	0	0	3	2
SM SMITH	OOH Last Day of the Month	6	4	4	4	4	4	4	3	4	4	4	0		4
SN SHAWNEE	Removals	8	31	8	36	21	14	12	13	18	13	19	0	193	18
SN SHAWNEE	Exits	22	36	25	23	41	16	15	27	22	16	31	0	274	25
SN SHAWNEE	OOH Last Day of the Month	700	695	680	696	686	687	680	661	652	660	632	0		675
ST STANTON	Removals	0	0	0	0	0	0	0	0	0	0	0	0	0	0
ST STANTON	Exits	0	0	0	0	0	1	0	0	0	0	0	0	1	1
ST STANTON	OOH Last Day of the Month	3	3	3	3	3	2	2	2	2	2	2	0		2
SU SUMNER	Removals	1	1	3	12	0	0	4	2	3	3	3	0	32	4
SU SUMNER	Exits	0	6	1	2	1	3	0	1	0	1	3	0	18	2
SU SUMNER	OOH Last Day of the Month	69	64	66	76	74	69	72	75	77	80	82	0		73
SV STEVENS	Removals	0	0	0	1	0	0	1	0	2	0	0	0	4	1
SV STEVENS	Exits	0	0	0	0	1	0	0	0	0	0	1	0	2	1
SV STEVENS	OOH Last Day of the Month	1	1	1	2	1	1	2	2	4	4	3	0		2
SW SEWARD	Removals	1	4	0	2	4	2	1	0	0	4	10	0	28	4
SW SEWARD	Exits	1	6	0	0	7	5	2	2	1	3	4	0	31	3
SW SEWARD	OOH Last Day of the Month	32	30	30	32	29	26	25	23	22	23	29	0		27
TH THOMAS	Removals	0	0	2	0	3	1	1	0	3	0	0	0	10	2
TH THOMAS	Exits	0	3	1	2	4	0	0	2	1	2	0	0	15	2
TH THOMAS	OOH Last Day of the Month	33	30	31	31	28	29	31	29	30	28	28	0		30
TR TREGO	Removals	0	0	0	0	0	0	0	4	0	0	0	0	4	4
TR TREGO	Exits	0	0	0	1	0	1	0	0	0	0	0	0	2	1
TR TREGO	OOH Last Day of the Month	2	2	2	1	1	0	0	4	4	4	4	0		3
WA WALLACE	Removals	0	1	0	0	0	0	0	0	0	0	0	0	1	1
WA WALLACE	Exits	0	0	0	0	0	0	0	0	0	0	0	0	0	0
WA WALLACE	OOH Last Day of the Month	0	1	1	1	1	1	1	1	1	1	1	0		1
WB WABAUNSEE	Removals	0	0	0	0	0	0	0	0	0	0	0	0	0	0
WB WABAUNSEE	Exits	0	0	0	0	0	0	1	0	0	0	0	0	1	1
WB WABAUNSEE	OOH Last Day of the Month	10	10	10	10	10	10	9	9	9	9	9	0		10
WH WICHITA	Removals	0	0	0	0	0	0	0	0	0	0	0	0	0	0
WH WICHITA	Exits	0	0	0	0	1	0	0	0	0	0	0	0	1	1
WH WICHITA	OOH Last Day of the Month	2	2	2	2	1	1	1	1	1	1	1	0		1
WL WILSON	Removals	0	0	0	3	1	0	0	1	0	0	0	0	5	2
WL WILSON	Exits	4	0	2	1	0	2	1	1	2	1	0	0	14	2
WL WILSON	OOH Last Day of the Month	31	31	29	31	32	30	29	29	29	26	26	0		29
WO WOODSON	Removals	1	0	2	2	1	0	0	0	0	0	0	0	6	2
WO WOODSON	Exits	0	0	0	0	1	0	3	3	0	0	0	0	7	2
WO WOODSON	OOH Last Day of the Month	11	11	13	15	16	15	13	9	9	9	9	0		12
WS WASHINGTON	Removals	0	0	0	1	1	0	1	0	0	0	0	0	3	1
WS WASHINGTON	Exits	4	0	0	0	0	0	0	0	0	0	3	0	7	4
WS WASHINGTON	OOH Last Day of the Month	12	10	10	11	12	10	11	13	13	13	11	0		11
WY WYANDOTTE	Removals	6	8	3	6	5	2	5	3	2	3	5	0	48	4
WY WYANDOTTE	Exits	16	6	5	8	10	10	12	14	13	8	8	0	110	10



WY WYANDOTTE	OOH Last Day of the Month	330	330	333	327	322	319	311	299	296	295	285	0		313
--------------	---------------------------	-----	-----	-----	-----	-----	-----	-----	-----	-----	-----	-----	---	--	-----

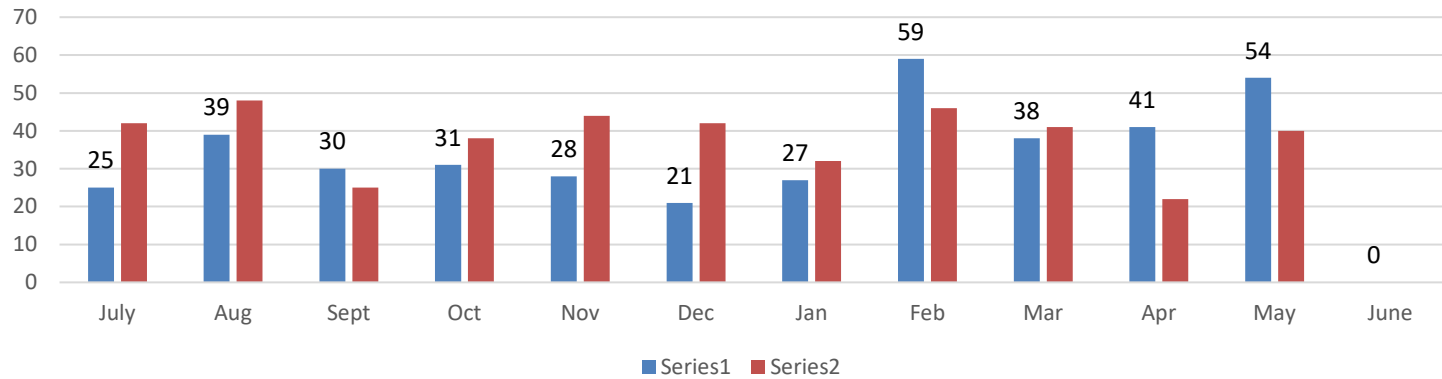
**Data Sources:**

**Removals-** from FACTS

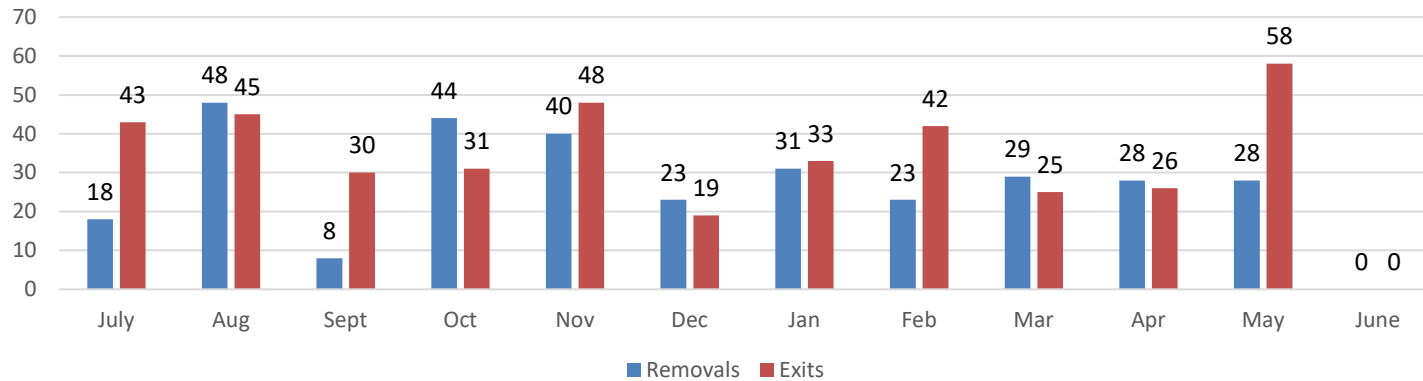
**Exits-** from FACTS

**OOH Last Day of the Month-** from FACTS

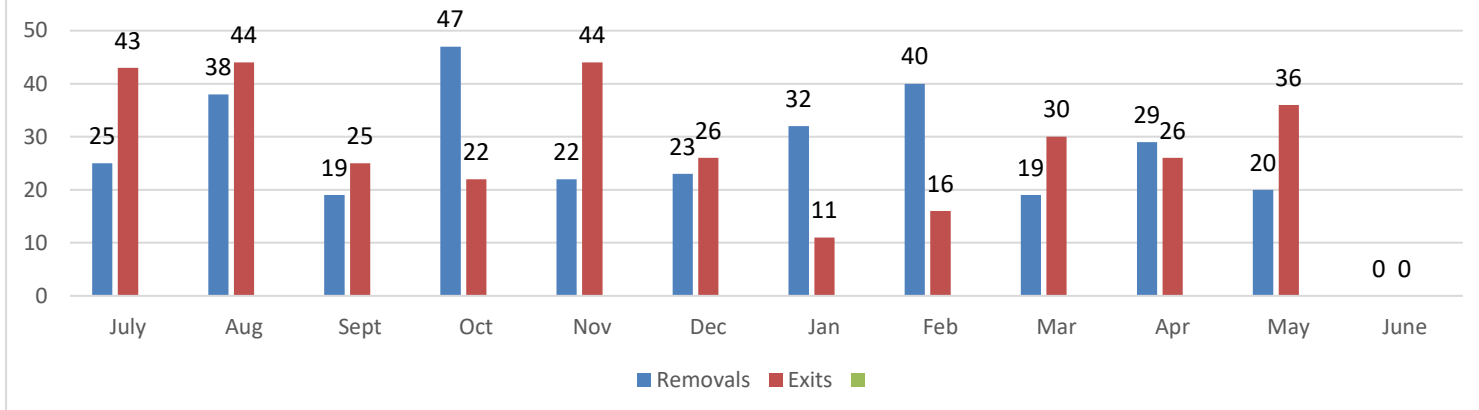
## Kansas City Region Removals and Exits SFY2024



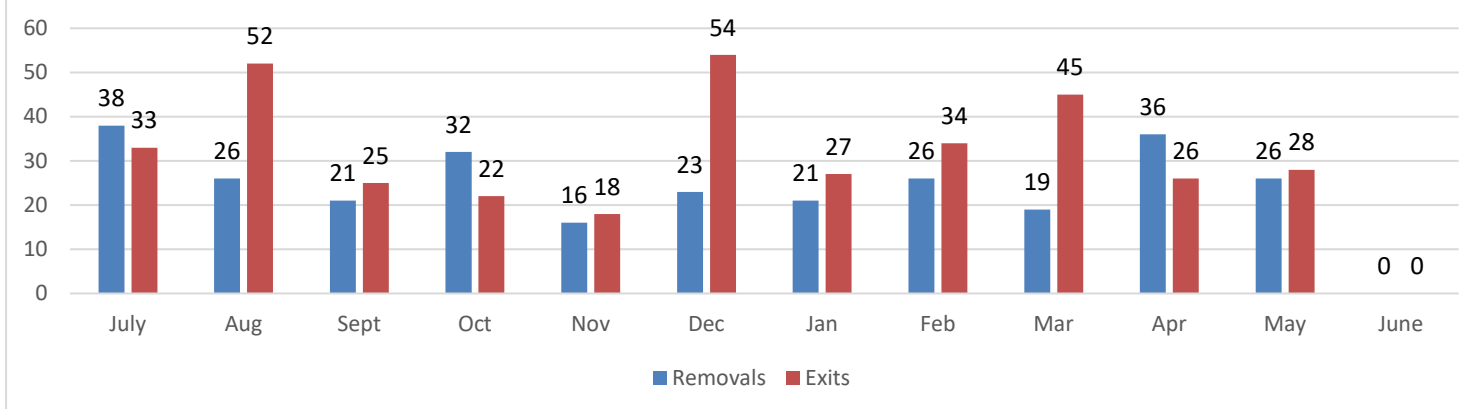
## Northeast Region Removals and Exits SFY2024



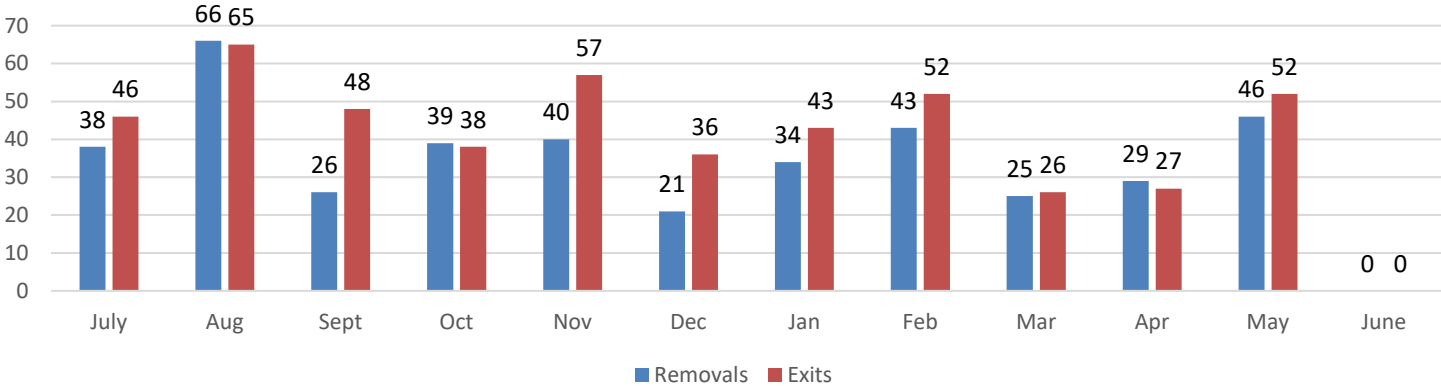
### Northwest Region Removals and Exits SFY2024



### Southeast Region Removals and Exits SFY2024



### Southwest Region Removals and Exits SFY2024



### Wichita Region Removals and Exits SFY2024

