



FY 2022 Removals, Exits and Out of Home Summary (FACTS)

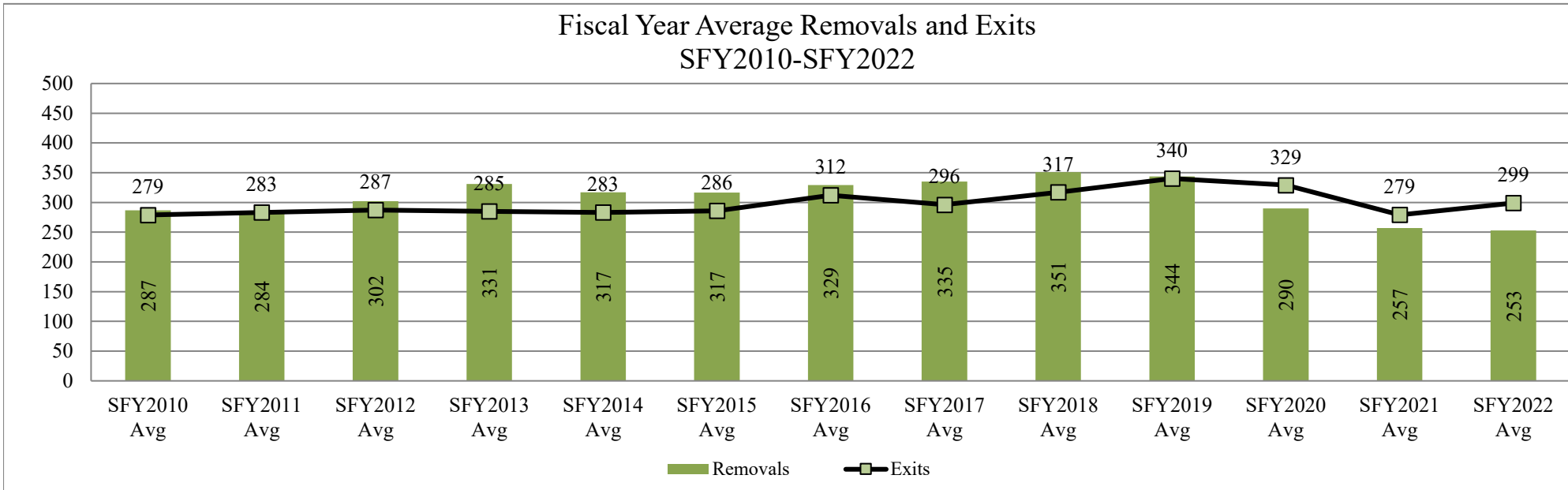
This report contains information on the number children removed into foster care in a given month, the number of children who exited foster care placement outside of their home in a given month, and the number of children who are in a foster care placement outside of their home (OOH) on the last day of each month. Information is provided by DCF Region and County.

11/15/2022

By DCF Region	Type of Information	Jul	Aug	Sep	Oct	Nov	Dec	Jan	Feb	Mar	Apr	May	Jun	Fiscal year Total	Fiscal year Average
Kansas City Region	Removals	40	44	31	53	37	37	30	17	44	43	47	31	454	38
Kansas City Region	Exits	59	72	55	83	59	39	49	41	42	35	40	45	619	52
Kansas City Region	OOH Last Day of the Month	1423	1400	1378	1339	1311	1321	1313	1287	1277	1282	1275	1272		1,323
Northeast Region	Removals	41	48	50	42	37	12	28	20	21	26	43	16	384	32
Northeast Region	Exits	38	42	33	26	38	33	24	32	38	30	60	59	453	38
Northeast Region	OOH Last Day of the Month	970	981	990	1003	1021	983	991	979	961	955	950	896		973
Northwest Region	Removals	34	44	43	29	48	24	31	54	32	38	25	33	435	36
Northwest Region	Exits	54	53	17	36	52	62	32	33	42	33	54	45	513	43
Northwest Region	OOH Last Day of the Month	701	689	712	712	715	671	669	688	675	685	653	643		684
Southeast Region	Removals	35	41	20	27	21	33	19	36	31	45	42	24	374	31
Southeast Region	Exits	41	57	38	36	41	36	30	25	40	67	57	34	502	42
Southeast Region	OOH Last Day of the Month	870	861	840	831	819	807	790	807	799	778	768	752		810
Southwest Region	Removals	37	56	61	48	43	40	45	52	56	37	43	24	542	45
Southwest Region	Exits	57	78	44	53	70	79	49	41	46	30	51	53	651	54
Southwest Region	OOH Last Day of the Month	1075	1065	1069	1075	1063	1026	1007	1013	1024	1039	1038	1002		1,041
Wichita Region	Removals	64	65	86	70	67	83	71	44	80	61	92	60	843	70
Wichita Region	Exits	60	98	37	71	67	90	67	45	89	77	73	75	849	71
Wichita Region	OOH Last Day of the Month	1698	1660	1718	1734	1728	1723	1719	1716	1701	1689	1712	1696		1,708
State	Removals	251	298	291	269	253	229	224	223	264	250	292	188	3,032	253
State	Exits	309	400	224	305	327	339	251	217	297	272	335	311	3,587	299
State	OOH Last Day of the Month	6737	6656	6707	6694	6657	6531	6489	6490	6437	6428	6396	6261		6,540

*Beginning in SFY2015 Discharges were replaced by Exits from Out of Home Placements.

Fiscal Year Average Removals and Exits SFY2010-SFY2022



Data Sources:

Removals- from FACTS

Exits- from FACTS

OOH Last Day of the Month- from FACTS

Information By County grouped in DCF Regions

County	Type of Information	Jul	Aug	Sep	Oct	Nov	Dec	Jan	Feb	Mar	Apr	May	Jun	Fiscal year Total	Fiscal year Average
AL ALLEN	Removals	7	0	1	5	0	0	0	0	2	6	3	6	30	4
AL ALLEN	Exits	1	2	7	2	7	1	2	5	4	3	6	1	41	3
AL ALLEN	OOH Last Day of the Month	66	66	60	65	61	56	54	49	44	45	41	44		54
AN ANDERSON	Removals	3	4	0	1	1	0	0	0	1	0	0	0	10	2
AN ANDERSON	Exits	2	0	0	6	2	0	4	2	0	1	0	0	17	3
AN ANDERSON	OOH Last Day of the Month	20	24	24	19	18	18	14	14	15	15	12	12		17
AT ATCHISON	Removals	4	0	0	2	1	0	0	1	2	3	7	1	21	3
AT ATCHISON	Exits	0	3	1	2	2	1	1	2	1	0	1	3	17	2
AT ATCHISON	OOH Last Day of the Month	54	51	49	48	48	47	46	45	48	50	52	57		50
BA BARBER	Removals	0	1	0	1	0	0	0	0	3	6	0	0	11	3
BA BARBER	Exits	0	1	0	1	1	2	1	0	0	2	3	1	12	2
BA BARBER	OOH Last Day of the Month	23	24	23	24	23	21	19	19	22	28	27	22		23
BB BOURBON	Removals	1	1	0	6	1	5	4	4	2	8	7	3	42	4
BB BOURBON	Exits	2	2	3	3	4	4	4	2	4	2	4	7	41	3
BB BOURBON	OOH Last Day of the Month	52	51	46	52	47	50	50	54	49	55	59	57		52
BR BROWN	Removals	0	8	10	4	7	2	4	0	1	5	2	1	44	4
BR BROWN	Exits	2	6	1	6	3	10	6	3	4	9	10	7	67	6
BR BROWN	OOH Last Day of the Month	80	84	94	92	94	89	87	84	82	83	73	67		84
BT BARTON	Removals	4	9	9	7	5	4	3	6	2	1	1	2	53	4
BT BARTON	Exits	4	11	1	12	4	4	4	5	6	2	8	4	65	5
BT BARTON	OOH Last Day of the Month	81	79	84	80	80	84	78	78	76	76	68	68		78

BU BUTLER	Removals	8	12	20	6	7	8	4	4	11	4	10	3	97	8
BU BUTLER	Exits	10	12	8	9	12	9	7	7	7	6	9	18	114	10
BU BUTLER	OOH Last Day of the Month	208	211	226	222	220	217	210	210	214	212	216	200		214
CA CLARK	Removals	0	0	0	0	0	0	0	0	0	0	0	0	0	0
CA CLARK	Exits	4	0	0	0	0	0	0	0	0	0	1	0	5	3
CA CLARK	OOH Last Day of the Month	1	1	1	1	2	2	2	2	2	2	2	2		2
CD CLOUD	Removals	0	0	2	0	3	2	5	2	2	2	0	0	18	3
CD CLOUD	Exits	2	0	0	3	4	0	7	2	2	5	0	0	25	4
CD CLOUD	OOH Last Day of the Month	43	43	45	42	40	40	40	33	40	38	37	37		40
CF COFFEY	Removals	1	0	0	0	0	0	0	0	0	0	0	0	1	1
CF COFFEY	Exits	0	4	0	0	0	2	2	7	0	0	0	0	15	4
CF COFFEY	OOH Last Day of the Month	18	15	15	15	15	13	11	4	4	4	4	4		10
CK CHEROKEE	Removals	2	2	5	0	1	0	1	4	0	9	2	0	26	3
CK CHEROKEE	Exits	5	2	1	4	4	2	0	0	2	7	2	0	29	3
CK CHEROKEE	OOH Last Day of the Month	39	39	40	39	39	34	35	39	37	39	39	36		38
CL COWLEY	Removals	1	3	3	0	2	0	8	0	7	9	9	3	45	5
CL COWLEY	Exits	1	4	5	2	1	3	5	2	2	1	0	1	27	2
CL COWLEY	OOH Last Day of the Month	77	77	74	71	74	72	74	70	73	80	89	91		77
CM COMANCHE	Removals	0	0	0	0	0	0	0	0	0	0	0	0	0	0
CM COMANCHE	Exits	0	0	0	0	1	0	0	0	0	1	0	0	2	1
CM COMANCHE	OOH Last Day of the Month	4	4	4	4	3	3	3	3	3	3	2	2		3
CN CHEYENNE	Removals	0	0	0	1	0	0	0	0	0	1	0	0	2	1
CN CHEYENNE	Exits	0	0	0	0	0	0	0	0	0	0	0	0	0	0
CN CHEYENNE	OOH Last Day of the Month	4	4	4	5	5	5	5	5	5	6	6	6		5
CQ CHAUTAUQUA	Removals	0	0	0	0	2	0	0	0	0	0	1	0	3	2
CQ CHAUTAUQUA	Exits	2	0	0	1	0	0	0	0	0	0	0	0	3	2
CQ CHAUTAUQUA	OOH Last Day of the Month	10	10	10	9	11	11	11	11	11	11	12	12		11
CR CRAWFORD	Removals	9	17	9	9	3	7	3	3	2	5	6	2	75	6
CR CRAWFORD	Exits	4	11	8	4	3	4	5	3	4	14	8	2	70	6
CR CRAWFORD	OOH Last Day of the Month	133	138	140	144	146	149	145	145	146	138	138	139		142
CS CHASE	Removals	0	0	0	0	0	0	0	0	0	0	0	0	0	0
CS CHASE	Exits	0	0	0	1	0	0	0	0	0	0	0	2	3	2
CS CHASE	OOH Last Day of the Month	11	11	7	7	6	6	6	6	6	6	6	4		7
CY CLAY	Removals	0	0	1	1	0	0	0	0	2	1	2	5	12	2
CY CLAY	Exits	1	0	1	5	1	2	0	1	2	0	1	1	15	2
CY CLAY	OOH Last Day of the Month	18	18	18	14	13	11	11	12	12	13	14	19		14
DC DECATUR	Removals	1	1	0	1	3	0	0	2	1	0	0	0	9	2
DC DECATUR	Exits	0	0	0	0	0	1	0	0	2	0	0	0	3	2
DC DECATUR	OOH Last Day of the Month	7	8	8	9	12	12	11	13	12	12	11	12		11
DG DOUGLAS	Removals	8	8	13	0	11	0	1	1	3	5	0	3	53	6
DG DOUGLAS	Exits	8	13	12	8	8	8	1	6	4	2	3	4	77	6
DG DOUGLAS	OOH Last Day of the Month	175	172	174	166	165	161	161	158	151	157	153	151		162
DK DICKINSON	Removals	1	3	2	2	0	5	0	7	1	4	2	0	27	3
DK DICKINSON	Exits	4	4	3	0	2	6	1	2	6	1	1	2	32	3
DK DICKINSON	OOH Last Day of the Month	29	28	28	30	26	25	24	29	24	27	28	27		27
DP DONIPHAN	Removals	0	3	4	1	0	0	4	0	0	0	1	0	13	3
DP DONIPHAN	Exits	2	4	2	0	1	0	0	2	0	0	0	0	11	2
DP DONIPHAN	OOH Last Day of the Month	31	30	32	33	33	32	36	34	34	34	35	35		33

HM HAMILTON	Removals	0	0	0	0	0	0	0	0	1	0	0	0	1	1
HM HAMILTON	Exits	0	0	0	0	0	5	0	0	0	0	0	0	5	5
HM HAMILTON	OOH Last Day of the Month	9	9	9	12	12	7	7	7	8	8	8	8		9
HP HARPER	Removals	0	1	1	2	1	0	0	0	0	4	1	0	10	2
HP HARPER	Exits	0	0	0	2	1	2	1	0	1	5	1	0	13	2
HP HARPER	OOH Last Day of the Month	29	27	28	29	29	26	25	25	24	22	22	22		26
HS HASKELL	Removals	0	0	0	0	0	0	0	0	0	0	0	0	0	0
HS HASKELL	Exits	0	0	0	1	0	0	0	0	0	0	0	1	2	1
HS HASKELL	OOH Last Day of the Month	8	8	8	8	8	7	7	7	7	7	7	6		7
HV HARVEY	Removals	3	4	2	3	11	0	0	1	1	4	2	4	35	4
HV HARVEY	Exits	2	4	3	2	7	3	5	0	1	1	4	3	35	3
HV HARVEY	OOH Last Day of the Month	47	46	44	44	52	46	41	43	43	47	47	46		46
JA JACKSON	Removals	2	0	0	7	3	0	0	0	1	2	1	2	18	3
JA JACKSON	Exits	0	4	2	3	0	0	4	1	1	3	1	5	24	3
JA JACKSON	OOH Last Day of the Month	45	41	39	44	47	46	45	41	41	40	40	34		42
JF JEFFERSON	Removals	0	2	2	0	1	0	0	0	0	0	2	0	7	2
JF JEFFERSON	Exits	4	1	1	0	4	0	0	0	0	0	5	2	17	3
JF JEFFERSON	OOH Last Day of the Month	28	30	29	27	30	29	29	29	29	29	29	26		29
JO JOHNSON	Removals	10	19	6	21	11	19	14	9	25	18	16	13	181	15
JO JOHNSON	Exits	19	34	20	36	28	14	13	9	22	13	21	17	246	21
JO JOHNSON	OOH Last Day of the Month	569	550	536	517	503	509	513	512	510	515	500	508		520
JW JEWELL	Removals	2	1	0	1	0	0	2	0	0	0	0	0	6	2
JW JEWELL	Exits	0	0	2	0	0	3	0	0	3	1	0	0	9	2
JW JEWELL	OOH Last Day of the Month	11	11	10	11	11	8	10	10	7	6	6	6		9
KE KEARNY	Removals	0	1	1	0	2	3	0	0	1	0	3	0	11	2
KE KEARNY	Exits	2	0	0	3	0	4	0	1	1	0	1	0	12	2
KE KEARNY	OOH Last Day of the Month	22	23	21	20	22	22	21	20	20	20	22	22		21
KM KINGMAN	Removals	0	2	5	0	0	0	0	0	0	2	0	0	9	3
KM KINGMAN	Exits	2	4	1	0	3	8	0	4	0	0	0	1	23	3
KM KINGMAN	OOH Last Day of the Month	28	29	34	33	32	22	22	21	18	20	20	19		25
KW KIOWA	Removals	0	0	0	0	0	5	0	0	0	0	0	0	5	5
KW KIOWA	Exits	0	1	0	0	0	0	0	0	5	0	0	0	6	3
KW KIOWA	OOH Last Day of the Month	3	3	2	2	2	7	7	7	2	2	2	2		3
LB LABETTE	Removals	2	3	2	1	4	5	0	10	3	3	6	5	44	4
LB LABETTE	Exits	1	6	1	2	4	5	1	1	9	6	5	4	45	4
LB LABETTE	OOH Last Day of the Month	58	55	56	56	58	58	55	65	59	54	54	56		57
LC LINCOLN	Removals	0	0	0	0	0	0	0	0	1	2	0	0	3	2
LC LINCOLN	Exits	0	1	0	1	1	0	0	0	1	0	0	1	5	1
LC LINCOLN	OOH Last Day of the Month	10	10	9	8	7	7	7	7	7	7	7	6		8
LE LANE	Removals	0	1	0	0	0	0	2	2	0	0	0	1	6	2
LE LANE	Exits	0	0	0	0	0	2	0	0	2	0	0	2	6	2
LE LANE	OOH Last Day of the Month	11	12	12	12	12	10	12	14	12	12	12	11		12
LG LOGAN	Removals	0	0	0	1	0	0	1	0	0	0	0	0	2	1
LG LOGAN	Exits	0	0	0	1	0	1	0	0	0	0	0	1	3	1
LG LOGAN	OOH Last Day of the Month	9	9	9	9	9	8	8	9	9	9	9	8		9
LN LINN	Removals	0	0	1	0	0	0	0	3	2	4	3	0	13	3
LN LINN	Exits	3	2	2	1	0	5	1	0	3	0	1	0	18	2
LN LINN	OOH Last Day of the Month	27	25	24	23	23	20	18	21	20	24	26	26		23

LV LEAVENWORTH	Removals	6	5	5	8	8	6	1	1	8	8	4	5	65	5
LV LEAVENWORTH	Exits	6	7	6	7	6	3	7	3	9	4	4	7	69	6
LV LEAVENWORTH	OOH Last Day of the Month	187	187	183	185	185	188	184	183	185	184	182	178		184
LY LYON	Removals	4	4	5	6	6	3	1	14	9	5	6	2	65	5
LY LYON	Exits	9	13	5	3	10	10	4	2	12	1	10	13	92	8
LY LYON	OOH Last Day of the Month	128	125	125	128	126	120	116	128	125	130	126	118		125
MC MITCHELL	Removals	1	2	0	0	0	1	0	1	0	0	0	3	8	2
MC MITCHELL	Exits	0	6	1	0	0	2	0	2	0	1	0	0	12	2
MC MITCHELL	OOH Last Day of the Month	18	14	13	13	13	12	13	12	11	11	10	13		13
ME MEADE	Removals	0	0	1	0	0	0	0	0	2	0	0	2	5	2
ME MEADE	Exits	0	2	1	0	0	0	0	0	0	0	0	0	3	2
ME MEADE	OOH Last Day of the Month	7	5	5	5	5	5	5	5	7	7	7	9		6
MG MONTGOMERY	Removals	0	4	0	0	2	0	3	0	4	7	5	0	25	4
MG MONTGOMERY	Exits	8	8	4	0	5	7	0	2	3	6	11	1	55	6
MG MONTGOMERY	OOH Last Day of the Month	148	144	141	139	131	121	125	123	125	128	124	123		131
MI MIAMI	Removals	0	0	0	0	1	0	1	6	0	0	0	4	12	3
MI MIAMI	Exits	1	3	0	1	2	1	1	2	2	7	1	1	22	2
MI MIAMI	OOH Last Day of the Month	47	44	44	42	44	43	41	45	46	38	36	39		42
MN MARION	Removals	1	2	0	0	0	0	0	0	3	1	2	0	9	2
MN MARION	Exits	1	0	0	0	2	1	0	0	0	0	2	2	8	2
MN MARION	OOH Last Day of the Month	19	21	21	21	20	19	17	17	20	22	21	19		20
MP MCPHERSON	Removals	1	8	2	0	2	0	8	6	3	3	0	1	34	4
MP MCPHERSON	Exits	4	2	1	1	2	6	0	3	5	2	4	2	32	3
MP MCPHERSON	OOH Last Day of the Month	43	51	52	51	54	50	54	54	52	53	49	47		51
MR MORRIS	Removals	1	2	1	1	0	0	4	4	0	0	2	1	16	2
MR MORRIS	Exits	0	1	1	0	1	1	0	0	3	1	0	2	10	1
MR MORRIS	OOH Last Day of the Month	8	10	10	11	10	9	13	14	11	13	15	14		12
MS MARSHALL	Removals	3	2	1	0	2	0	0	1	0	2	1	0	12	2
MS MARSHALL	Exits	5	2	4	3	0	0	1	1	3	1	5	2	27	3
MS MARSHALL	OOH Last Day of the Month	37	37	34	31	33	33	33	33	27	26	23	21		31
MT MORTON	Removals	0	0	0	0	0	0	0	2	1	0	0	0	3	2
MT MORTON	Exits	0	1	0	0	0	0	0	0	1	0	0	1	3	1
MT MORTON	OOH Last Day of the Month	6	5	5	5	5	5	5	7	8	7	7	6		6
NM NEMAHA	Removals	1	0	1	0	0	0	2	1	1	4	3	1	14	2
NM NEMAHA	Exits	0	0	0	0	0	0	0	1	0	1	1	4	7	2
NM NEMAHA	OOH Last Day of the Month	17	17	18	18	19	19	21	20	25	27	28	24		21
NO NEOSHO	Removals	1	4	1	0	2	5	4	3	7	0	0	2	29	3
NO NEOSHO	Exits	4	6	3	6	6	1	2	0	0	13	3	2	46	5
NO NEOSHO	OOH Last Day of the Month	64	63	63	60	59	55	57	58	65	54	54	51		59
NS NESS	Removals	2	0	0	0	0	0	0	0	0	0	0	0	2	2
NS NESS	Exits	0	0	0	2	0	0	0	0	0	0	0	0	2	2
NS NESS	OOH Last Day of the Month	2	2	2	0	0	0	0	0	0	0	0	0		2
NT NORTON	Removals	1	1	2	0	0	1	0	0	4	0	0	0	9	2
NT NORTON	Exits	1	2	2	1	3	2	0	0	2	0	1	0	14	2
NT NORTON	OOH Last Day of the Month	20	18	18	17	15	15	15	14	17	18	17	17		17
OB OSBORNE	Removals	0	0	1	0	0	0	0	0	0	0	0	0	1	1
OB OSBORNE	Exits	0	2	0	0	1	0	1	0	0	0	0	0	4	1
OB OSBORNE	OOH Last Day of the Month	6	4	5	5	4	4	3	3	3	3	3	3		4

OS OSAGE	Removals	0	3	0	0	0	2	0	2	4	1	1	0	13	2
OS OSAGE	Exits	0	3	2	4	1	1	0	1	0	3	8	0	23	3
OS OSAGE	OOH Last Day of the Month	32	34	29	26	25	29	28	29	33	31	24	24		29
OT OTTAWA	Removals	0	2	0	0	1	0	0	4	0	1	3	1	12	2
OT OTTAWA	Exits	1	1	0	0	2	1	0	0	0	0	0	1	6	1
OT OTTAWA	OOH Last Day of the Month	2	3	3	3	3	2	2	6	6	7	10	10		5
PL PHILLIPS	Removals	1	0	5	1	3	0	1	0	0	2	1	0	14	2
PL PHILLIPS	Exits	0	0	1	2	1	0	0	0	0	0	1	5	10	2
PL PHILLIPS	OOH Last Day of the Month	10	10	14	14	16	15	16	16	16	18	19	14		15
PN PAWNEE	Removals	1	0	1	0	0	1	0	3	0	1	0	0	7	1
PN PAWNEE	Exits	0	1	1	0	1	0	2	0	0	0	0	0	5	1
PN PAWNEE	OOH Last Day of the Month	17	16	16	16	15	16	15	17	17	18	18	18		17
PR PRATT	Removals	2	4	0	7	3	1	1	1	2	3	3	2	29	3
PR PRATT	Exits	1	2	1	4	0	0	1	0	7	0	1	1	18	2
PR PRATT	OOH Last Day of the Month	37	39	38	41	43	45	46	47	41	44	46	47		43
PT POTTAWATOMIE	Removals	3	3	5	1	3	2	1	0	1	0	6	1	26	3
PT POTTAWATOMIE	Exits	0	2	1	0	4	0	2	0	5	2	2	1	19	2
PT POTTAWATOMIE	OOH Last Day of the Month	27	23	27	26	32	28	28	28	24	22	26	27		27
RA RAWLINS	Removals	0	0	0	0	0	0	0	0	0	1	0	0	1	1
RA RAWLINS	Exits	0	0	0	0	0	0	0	0	0	0	0	0	0	0
RA RAWLINS	OOH Last Day of the Month	2	2	2	2	2	2	2	2	2	3	3	3		2
RC RICE	Removals	0	1	0	0	1	4	1	2	5	0	0	1	15	2
RC RICE	Exits	0	2	1	0	4	8	2	0	0	3	2	2	24	3
RC RICE	OOH Last Day of the Month	42	42	41	41	40	34	33	35	40	38	36	35		38
RH RUSH	Removals	1	0	0	2	0	2	0	0	3	0	0	0	8	2
RH RUSH	Exits	1	2	0	1	3	2	0	0	0	0	0	0	9	2
RH RUSH	OOH Last Day of the Month	7	5	5	6	6	5	3	3	6	6	6	6		5
RL RILEY	Removals	0	7	8	1	4	1	2	10	4	3	7	5	52	5
RL RILEY	Exits	1	8	2	5	3	10	2	8	2	0	4	3	48	4
RL RILEY	OOH Last Day of the Month	79	75	81	79	80	75	72	75	74	78	82	84		78
RN RENO	Removals	11	16	11	10	3	6	9	7	14	6	4	8	105	9
RN RENO	Exits	15	16	16	11	15	7	13	23	7	10	3	6	142	12
RN RENO	OOH Last Day of the Month	257	256	247	249	236	238	235	220	228	224	230	224		237
RO ROOKS	Removals	0	1	0	0	0	0	0	0	2	1	0	2	6	2
RO ROOKS	Exits	2	0	0	0	0	0	1	1	1	0	2	0	7	1
RO ROOKS	OOH Last Day of the Month	14	14	14	14	13	13	12	8	10	10	8	10		12
RP REPUBLIC	Removals	2	0	1	0	0	0	0	0	0	0	0	0	3	2
RP REPUBLIC	Exits	2	0	0	0	0	2	1	0	0	2	0	0	7	2
RP REPUBLIC	OOH Last Day of the Month	6	6	6	7	7	5	5	4	4	2	2	2		5
RS RUSSELL	Removals	1	0	0	2	0	0	0	5	1	1	4	0	14	2
RS RUSSELL	Exits	1	1	0	1	5	0	0	4	1	0	1	0	14	2
RS RUSSELL	OOH Last Day of the Month	18	17	17	18	14	13	13	15	15	16	15	18		16
SA SALINE	Removals	5	13	7	2	7	2	5	7	3	3	2	0	56	5
SA SALINE	Exits	9	6	2	7	7	6	9	3	6	7	7	16	85	7
SA SALINE	OOH Last Day of the Month	126	132	136	132	134	125	122	131	124	120	114	98		125
SC SCOTT	Removals	0	3	3	1	0	1	3	0	4	0	1	0	16	2
SC SCOTT	Exits	1	0	0	1	2	1	2	0	0	0	0	2	9	2
SC SCOTT	OOH Last Day of the Month	23	26	29	29	28	27	28	28	32	32	33	31		29

SD SHERIDAN	Removals	0	0	0	0	0	1	0	0	0	2	0	0	3	2
SD SHERIDAN	Exits	0	0	0	0	0	0	0	0	0	0	0	0	0	0
SD SHERIDAN	OOH Last Day of the Month	5	2	2	2	2	3	3	3	3	3	5	5		3
SF STAFFORD	Removals	0	0	0	1	0	3	0	0	0	1	1	1	7	1
SF STAFFORD	Exits	2	3	0	0	0	6	2	0	0	0	3	0	16	3
SF STAFFORD	OOH Last Day of the Month	23	20	20	21	21	18	16	16	16	17	15	16		18
SG SEDGWICK	Removals	51	37	53	52	53	71	56	34	51	30	60	49	597	50
SG SEDGWICK	Exits	44	66	19	48	46	60	48	29	66	63	53	52	594	50
SG SEDGWICK	OOH Last Day of the Month	1193	1153	1192	1210	1205	1222	1225	1228	1214	1184	1190	1191		1,201
SH SHERMAN	Removals	1	1	3	1	0	0	0	1	1	0	0	1	9	1
SH SHERMAN	Exits	0	1	0	3	2	1	1	0	1	0	3	0	12	2
SH SHERMAN	OOH Last Day of the Month	17	17	20	17	15	14	12	13	13	13	10	11		14
SM SMITH	Removals	0	0	0	0	0	0	0	0	0	1	0	0	1	1
SM SMITH	Exits	0	2	0	0	0	0	0	0	0	0	0	0	2	2
SM SMITH	OOH Last Day of the Month	7	5	5	5	5	5	5	5	5	6	6	6		5
SN SHAWNEE	Removals	32	30	25	28	20	8	17	18	17	13	24	11	243	20
SN SHAWNEE	Exits	25	23	22	14	26	23	11	24	25	13	36	37	279	23
SN SHAWNEE	OOH Last Day of the Month	698	712	709	723	722	696	701	699	689	685	684	650		697
ST STANTON	Removals	0	0	0	0	0	0	0	0	0	0	0	0	0	0
ST STANTON	Exits	0	0	0	0	0	0	0	0	0	0	0	0	0	0
ST STANTON	OOH Last Day of the Month	6	6	6	6	6	6	6	6	6	6	6	6		6
SU SUMNER	Removals	1	2	0	2	1	2	2	0	2	1	7	3	23	2
SU SUMNER	Exits	1	6	2	0	2	4	3	1	2	0	2	0	23	3
SU SUMNER	OOH Last Day of the Month	66	63	65	64	65	62	62	58	57	59	64	67		63
SV STEVENS	Removals	0	0	0	0	0	0	0	0	0	0	0	0	0	0
SV STEVENS	Exits	0	0	0	0	0	0	0	0	0	0	0	0	0	0
SV STEVENS	OOH Last Day of the Month	2	2	2	2	2	2	2	2	2	2	2	2		2
SW SEWARD	Removals	1	4	1	1	1	2	1	0	1	0	3	1	16	2
SW SEWARD	Exits	0	8	4	2	0	2	6	3	0	2	2	0	29	4
SW SEWARD	OOH Last Day of the Month	38	37	33	29	29	29	24	21	23	22	23	23		28
TH THOMAS	Removals	2	1	0	6	0	0	1	0	2	2	1	0	15	2
TH THOMAS	Exits	0	1	0	0	1	4	0	1	2	0	1	0	10	2
TH THOMAS	OOH Last Day of the Month	24	23	24	30	29	25	28	25	25	27	29	29		27
TR TREGO	Removals	0	0	0	0	2	0	0	3	0	0	0	0	5	3
TR TREGO	Exits	0	0	0	0	0	0	0	0	0	0	0	0	0	0
TR TREGO	OOH Last Day of the Month	2	2	2	2	4	4	4	7	7	7	7	7		5
WA WALLACE	Removals	0	0	0	0	0	0	0	0	0	0	0	0	0	0
WA WALLACE	Exits	0	0	0	0	0	0	0	0	0	1	0	0	1	1
WA WALLACE	OOH Last Day of the Month	4	4	4	4	4	4	4	4	4	3	3	3		4
WB WABAUNSEE	Removals	0	0	2	1	1	0	0	0	0	0	3	0	7	2
WB WABAUNSEE	Exits	0	0	0	0	0	0	0	0	0	1	0	1	2	1
WB WABAUNSEE	OOH Last Day of the Month	7	7	8	9	11	11	11	11	10	9	12	12		10
WH WICHITA	Removals	0	0	0	0	0	0	0	0	0	0	0	0	0	0
WH WICHITA	Exits	0	0	0	0	0	0	0	0	0	0	0	0	0	0
WH WICHITA	OOH Last Day of the Month	2	2	2	2	2	2	2	2	2	2	2	2		2
WL WILSON	Removals	0	0	1	0	4	7	1	1	1	2	3	0	20	3
WL WILSON	Exits	0	2	2	1	0	1	1	0	1	1	5	8	22	2
WL WILSON	OOH Last Day of the Month	45	43	44	39	42	49	49	50	50	51	50	41		46

WO WOODSON	Removals	0	0	0	2	0	0	1	0	0	0	0	0	3	2
WO WOODSON	Exits	0	3	0	0	1	0	0	0	1	0	0	2	7	2
WO WOODSON	OOH Last Day of the Month	18	15	15	15	14	14	15	15	14	14	16	14		15
WS WASHINGTON	Removals	0	2	0	0	2	0	3	0	0	0	0	0	7	2
WS WASHINGTON	Exits	0	0	0	0	2	0	0	0	0	1	3	0	6	2
WS WASHINGTON	OOH Last Day of the Month	9	12	12	12	12	12	14	14	14	13	10	10		12
WY WYANDOTTE	Removals	12	12	7	22	6	12	14	5	6	9	20	9	134	11
WY WYANDOTTE	Exits	26	15	16	30	15	13	27	21	6	16	11	14	210	18
WY WYANDOTTE	OOH Last Day of the Month	438	440	436	423	410	416	409	389	383	376	388	378		407

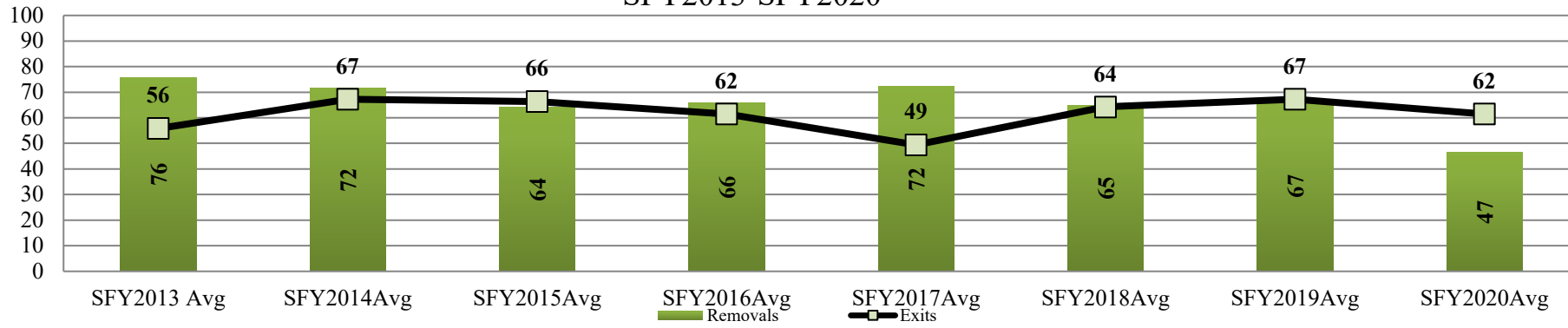
Data Sources:

Removals- from FACTS

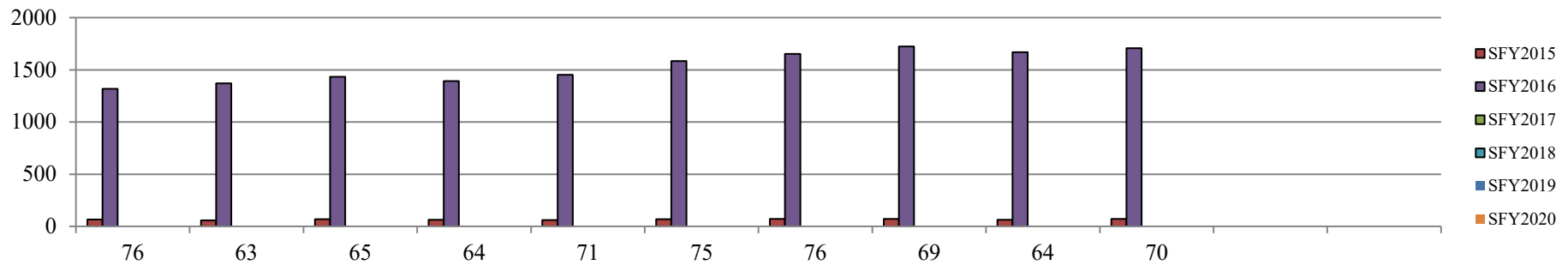
Exits- from FACTS

OOH Last Day of the Month- from FACTS

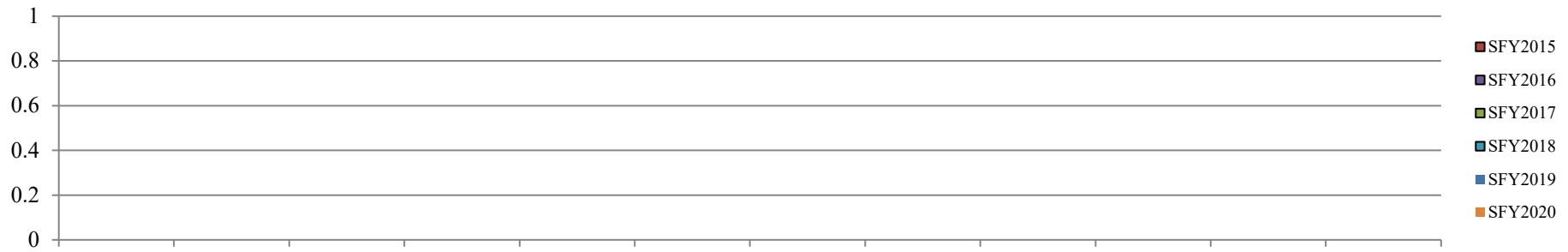
Kansas City Region Fiscal Year Average Removals and Exits
SFY2013-SFY2020



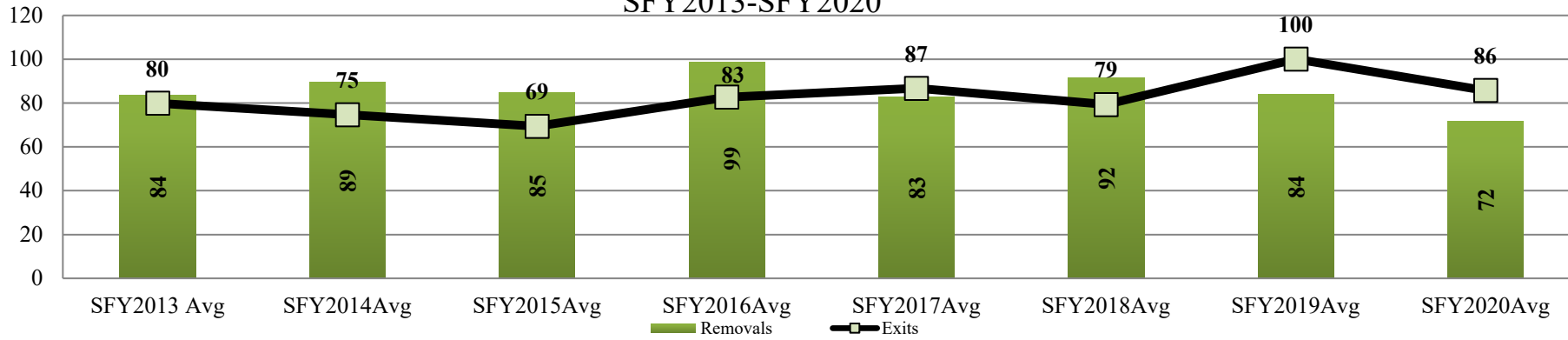
Kansas City Region Monthly Exits
SFY2015-SFY2020



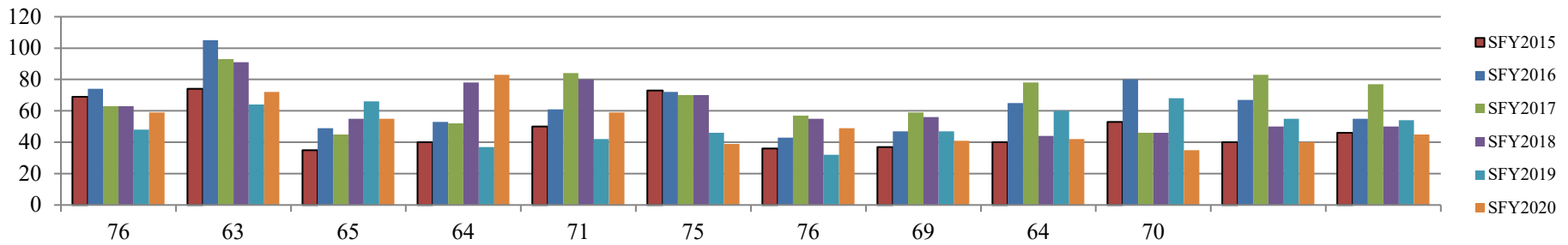
Kansas City Region Monthly Removals
SFY2015-SFY2020



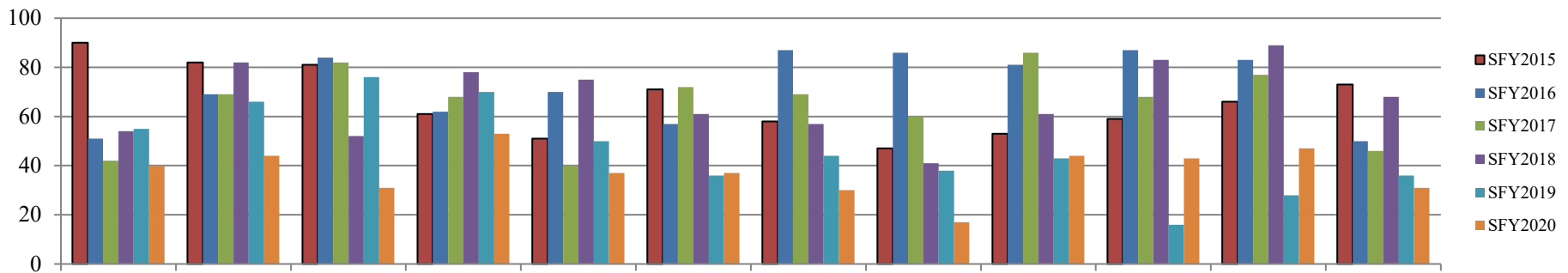
East Region Fiscal Year Average Removals and Exits
SFY2013-SFY2020



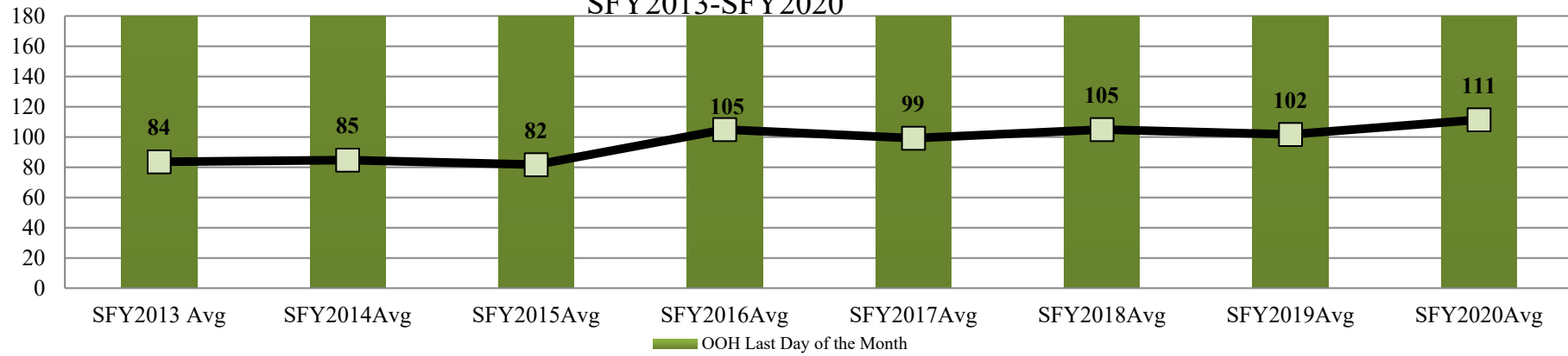
East Region Monthly Exits
SFY2015-SFY2020



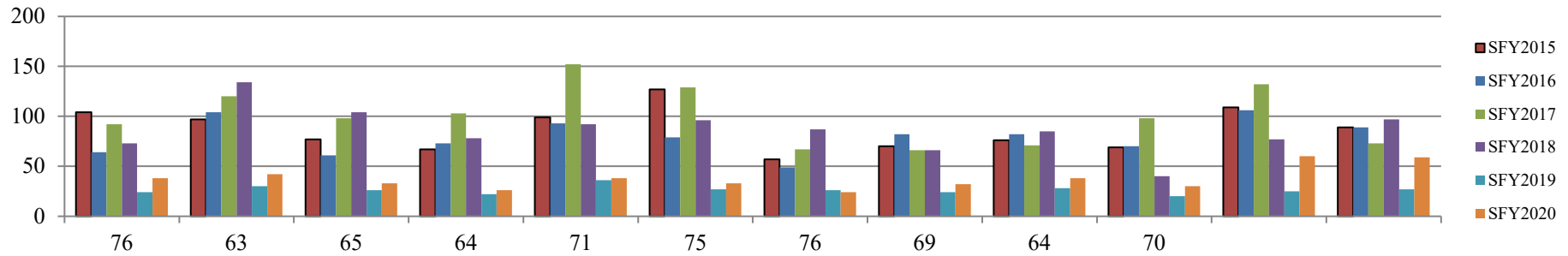
East Region Monthly Removals
SFY2015-SFY2020



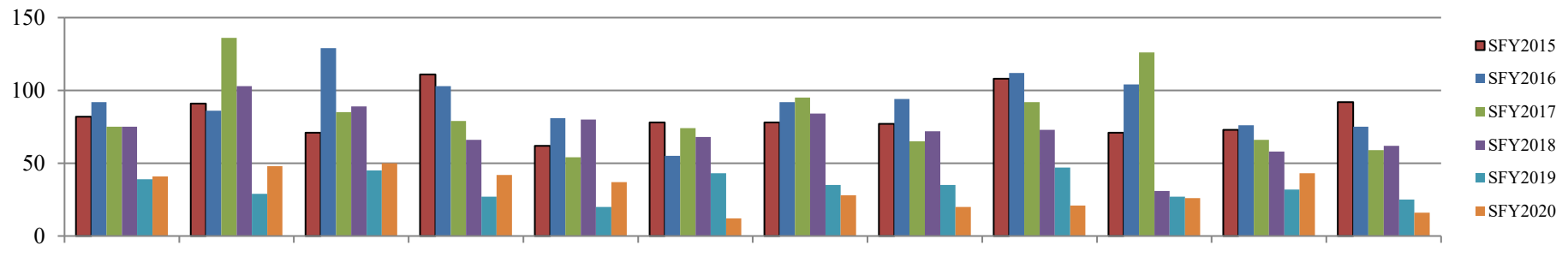
West Region Fiscal Year Average Removals and Exits SFY2013-SFY2020



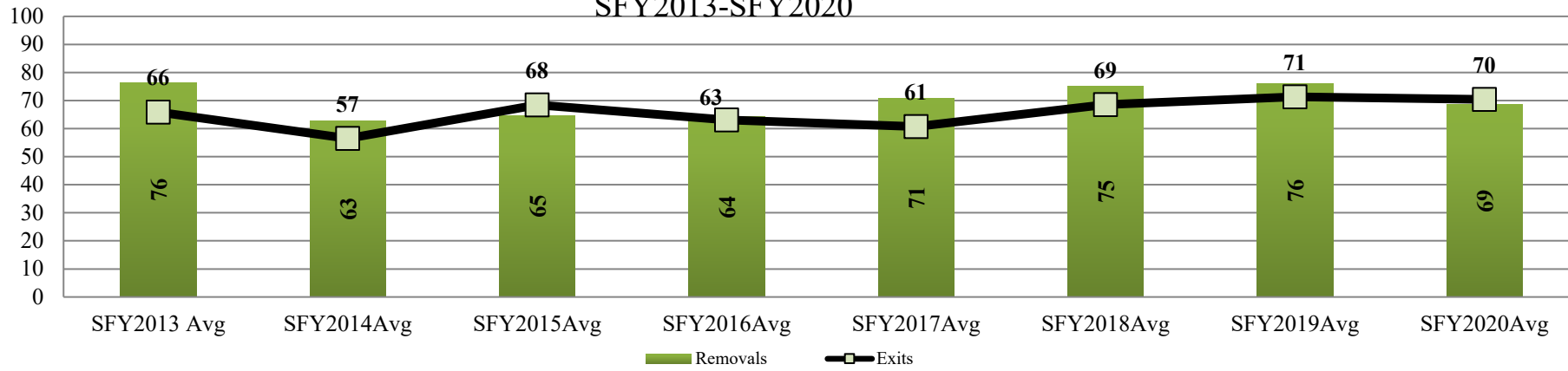
West Region Monthly Exits SFY2015-SFY2020



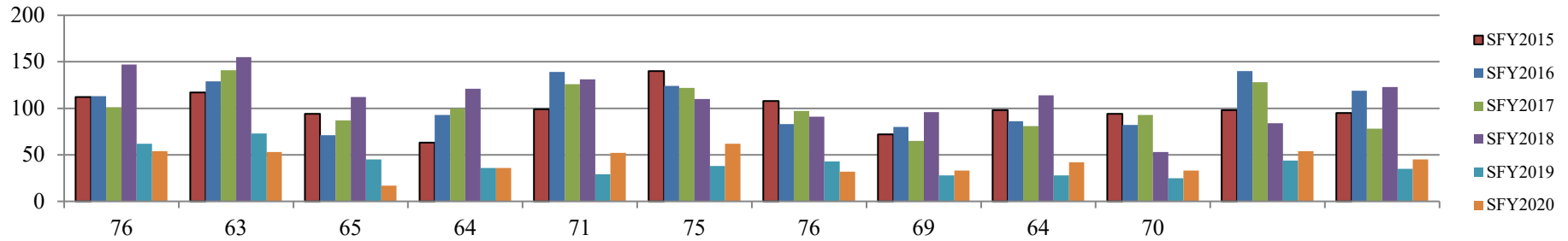
West Region Monthly Removals SFY2015-SFY2020



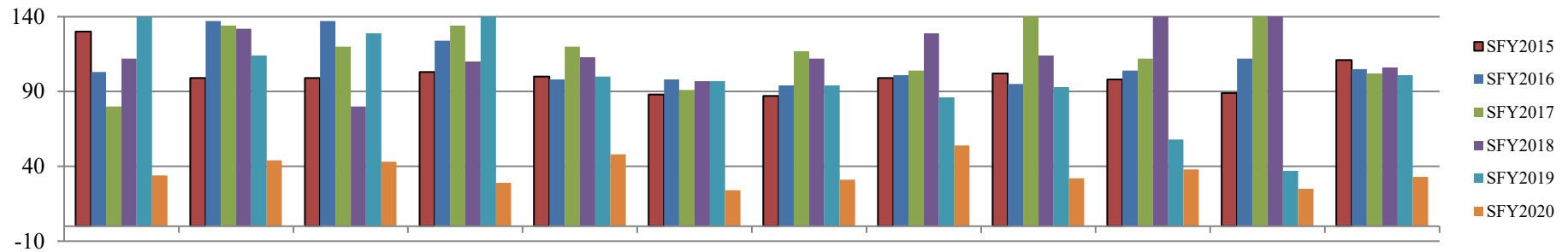
Wichita Region Fiscal Year Average Removals and Exits
SFY2013-SFY2020



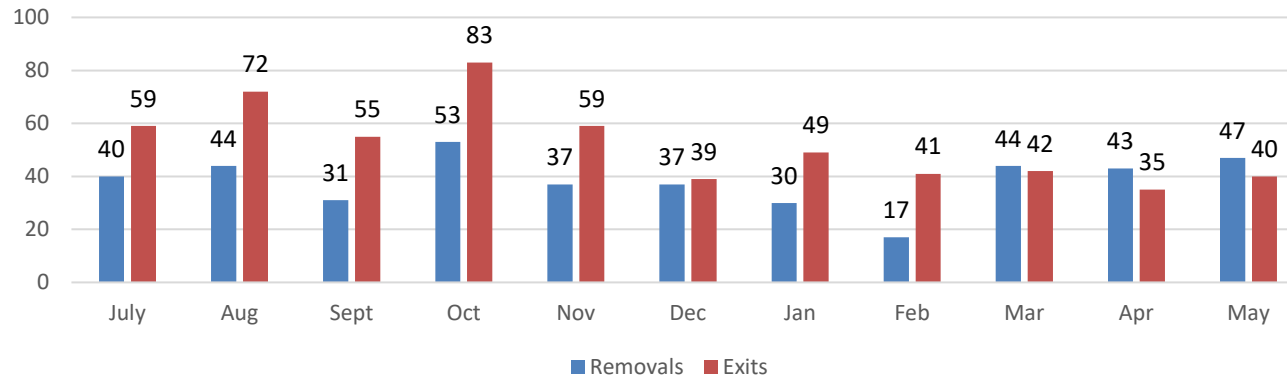
Wichita Region Monthly Exits
SFY2015-SFY2020



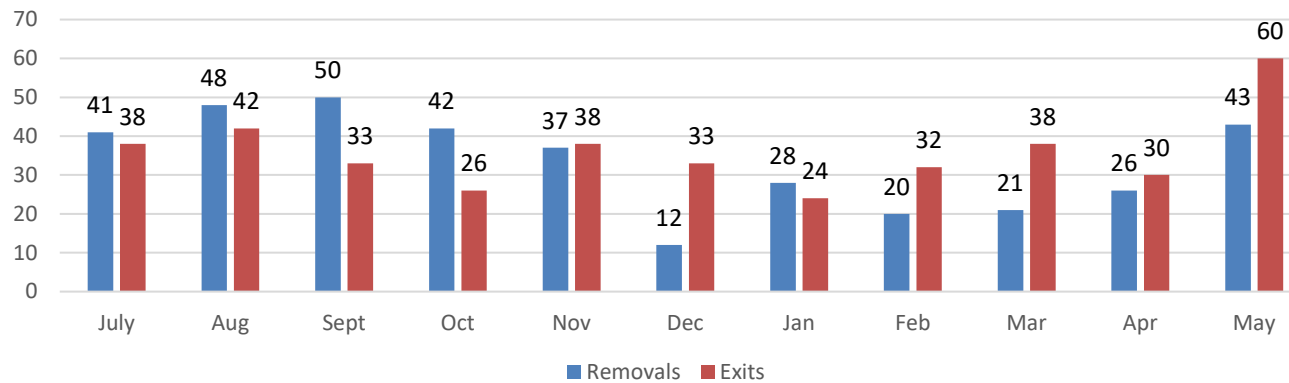
Wichita Region Monthly Removals
SFY2015-SFY2020



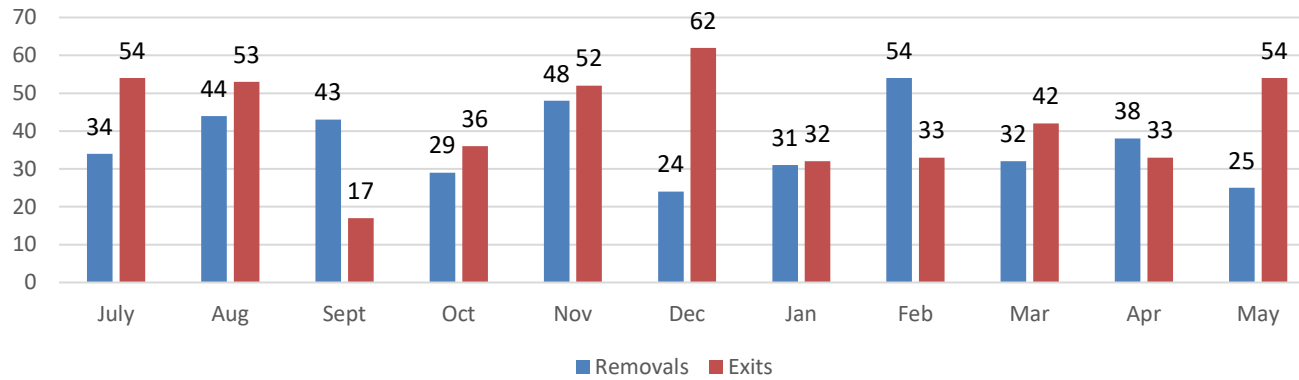
Kansas City Region Removals and Exits SFY2022



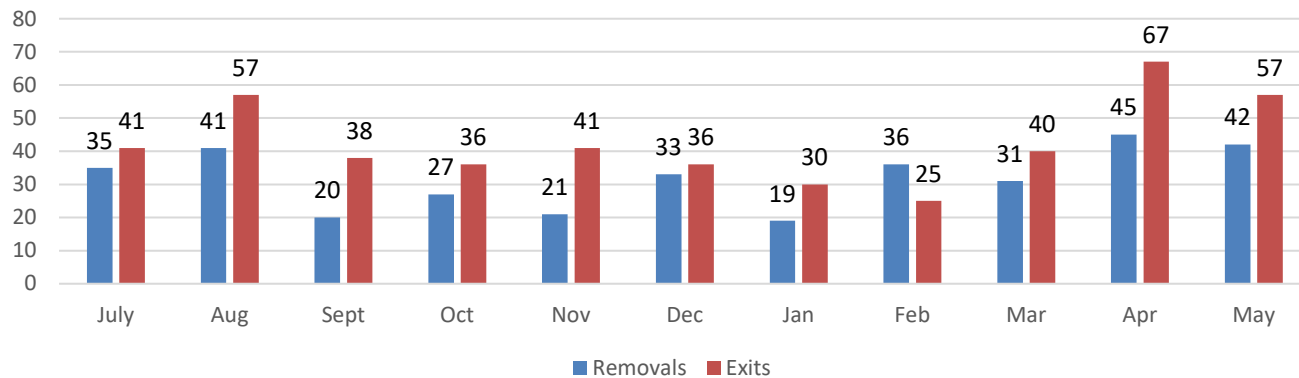
Northeast Region Removals and Exits SFY2022



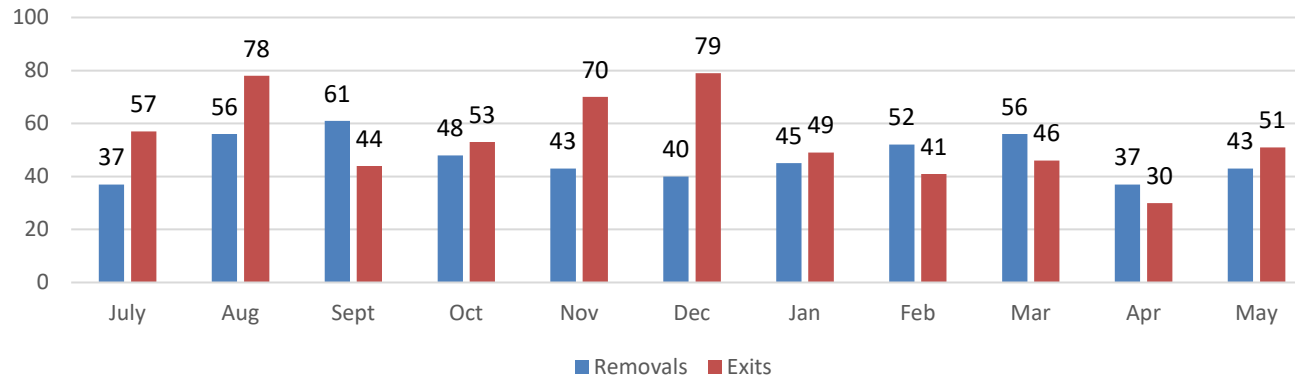
Northwest Region Removals and Exits SFY2022



Southeast Region Removals and Exits SFY2022



Southwest Region Removals and Exits SFY2022



Wichita Region Removals and Exits SFY2022

