



## FY 2018 Removals, Exits and Out of Home Summary (FACTS)

This report contains information on the number children removed into foster care in a given month, the number of children who exited foster care placement outside of their home in a given month, and the number of children who are in a foster care placement outside of their home (OOH) on the last day of each month. Information is provided by DCF Region and County.

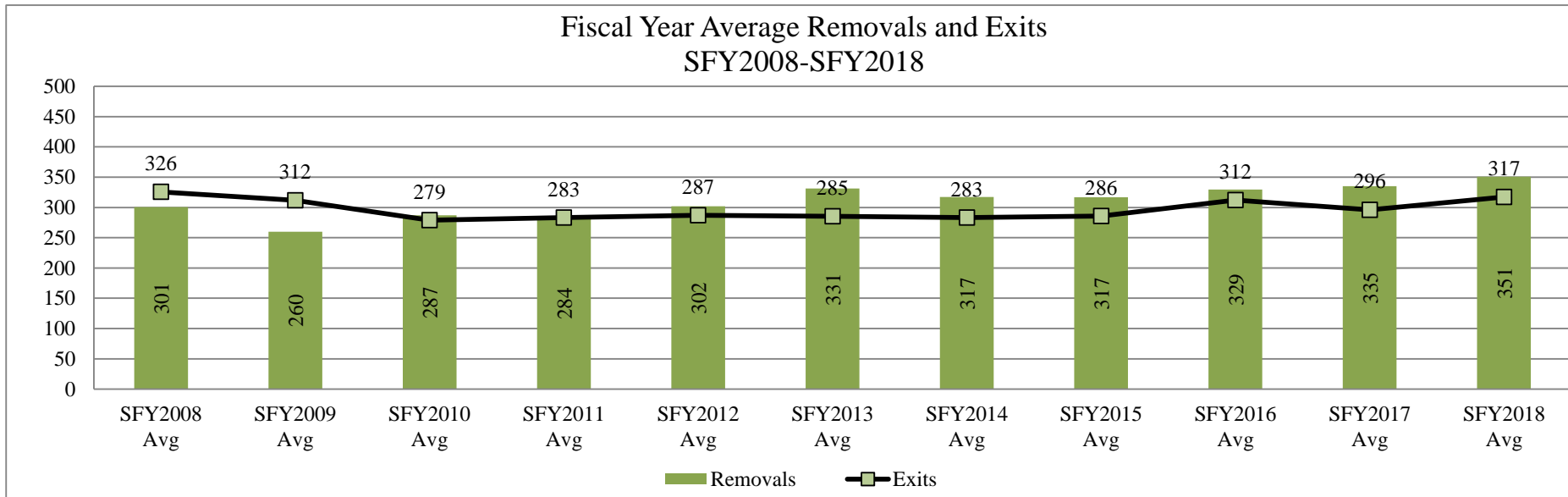
Strong Families Make a Strong Kansas

Updated: 06/30/2018

By DCF Region	Type of Information	Jul	Aug	Sep	Oct	Nov	Dec	Jan	Feb	Mar	Apr	May	Jun	Fiscal year Total	Fiscal year Average
Kansas City Region	Removals	42	69	82	68	40	72	69	60	86	68	77	46	779	65
Kansas City Region	Exits	74	105	49	53	61	72	43	47	65	80	67	55	771	64
Kansas City Region	OOH Last Day of the Month	1682	1664	1692	1688	1667	1659	1683	1684	1706	1738	1737	1721		1,693
East Region	Removals	92	86	129	103	81	55	92	94	112	104	76	75	1,099	92
East Region	Exits	64	104	61	73	93	79	49	82	82	70	106	89	952	79
East Region	OOH Last Day of the Month	2066	2042	2091	2143	2150	2105	2140	2154	2180	2223	2193	2164		2,138
West Region	Removals	80	134	120	134	120	91	117	104	165	112	152	102	1,431	119
West Region	Exits	113	129	71	93	139	124	83	80	86	82	140	119	1,259	105
West Region	OOH Last Day of the Month	1846	1841	1900	1944	1952	1890	1925	1941	2018	2071	2080	2053		1,955
Wichita Region	Removals	52	65	61	83	87	64	83	90	71	92	99	56	903	75
Wichita Region	Exits	72	108	46	59	75	68	51	58	58	63	106	59	823	69
Wichita Region	OOH Last Day of the Month	1536	1509	1516	1541	1578	1546	1576	1615	1636	1655	1660	1650		1,585
State	Removals	266	354	392	388	328	282	361	348	434	376	404	279	4,212	351
State	Exits	323	446	227	278	368	343	226	267	291	295	419	322	3,805	317
State	OOH Last Day of the Month	7130	7056	7199	7316	7347	7200	7324	7394	7540	7687	7670	7588		7,371

\*Beginning in SFY2015 Discharges were replaced by Exits from Out of Home Placements.

Fiscal Year Average Removals and Exits  
SFY2008-SFY2018



**Data Sources:**

Removals- from FACTS

Exits- from FACTS

OOH Last Day of the Month- from FACTS

**Information By County grouped in DCF Regions**

County	Type of Information	Jul	Aug	Sep	Oct	Nov	Dec	Jan	Feb	Mar	Apr	May	Jun	Fiscal year Total	Fiscal year Average
AL ALLEN	Removals	3	9	6	10	2	3	11	12	6	3	2	6	73	6
AL ALLEN	Exits	4	0	9	2	9	4	3	6	7	5	15	0	64	6
AL ALLEN	OOH Last Day of the Month	81	92	87	98	91	86	96	99	98	98	86	92		92
AN ANDERSON	Removals	0	1	0	0	2	0	0	1	0	1	0	1	6	1
AN ANDERSON	Exits	0	0	0	0	0	0	0	0	0	0	1	0	1	1
AN ANDERSON	OOH Last Day of the Month	4	5	6	7	9	9	9	10	10	11	11	12		9
BB BOURBON	Removals	4	3	8	2	2	2	9	1	7	8	5	2	53	4
BB BOURBON	Exits	2	3	9	6	5	3	1	2	7	3	6	1	48	4
BB BOURBON	OOH Last Day of the Month	84	81	79	80	77	75	82	82	82	84	87	87		82
BR BROWN	Removals	1	6	3	11	0	0	2	1	5	3	3	1	36	4
BR BROWN	Exits	3	1	2	0	4	5	0	4	3	4	5	6	37	4
BR BROWN	OOH Last Day of the Month	95	98	100	111	110	104	104	101	103	105	100	94		102
CQ CHAUTAUQUA	Removals	0	0	0	0	0	0	0	0	0	0	0	0	0	0
CQ CHAUTAUQUA	Exits	0	0	0	0	0	0	0	0	0	0	0	0	0	0
CQ CHAUTAUQUA	OOH Last Day of the Month	7	7	7	6	6	6	6	6	4	4	4	4		6
CK CHEROKEE	Removals	6	12	16	7	8	3	3	4	3	4	2	2	70	6
CK CHEROKEE	Exits	2	9	6	5	6	5	1	10	8	9	7	4	72	6
CK CHEROKEE	OOH Last Day of the Month	70	76	86	93	93	88	90	87	82	76	67	66		81
CF COFFEY	Removals	4	0	0	0	4	0	0	1	0	1	0	0	10	3
CF COFFEY	Exits	0	1	1	0	0	2	1	0	1	1	1	1	9	1
CF COFFEY	OOH Last Day of the Month	14	13	13	13	17	15	14	15	14	15	13	12		14
CR CRAWFORD	Removals	10	8	28	2	9	8	9	24	9	9	4	3	123	10
CR CRAWFORD	Exits	7	24	9	7	7	13	12	19	1	7	12	19	137	11
CR CRAWFORD	OOH Last Day of the Month	205	191	202	190	192	188	183	190	196	204	193	176		193
DP DONIPHAN	Removals	1	2	0	0	5	0	2	1	0	0	0	1	12	2
DP DONIPHAN	Exits	0	4	0	0	1	4	2	0	1	0	6	1	19	3
DP DONIPHAN	OOH Last Day of the Month	38	37	37	37	41	37	37	38	37	37	33	31		37
FR FRANKLIN	Removals	3	0	6	9	7	4	4	1	6	4	11	10	65	6
FR FRANKLIN	Exits	3	2	0	10	6	5	2	2	3	5	8	5	51	5
FR FRANKLIN	OOH Last Day of the Month	121	118	124	132	136	127	129	124	125	127	130	130		127
JA JACKSON	Removals	0	2	8	4	3	4	0	0	6	10	1	1	39	4
JA JACKSON	Exits	2	5	1	3	6	2	1	5	5	2	5	1	38	3
JA JACKSON	OOH Last Day of the Month	41	40	44	41	38	39	38	33	39	54	51	46		42
JF JEFFERSON	Removals	1	0	0	0	0	0	0	0	2	1	5	5	14	3
JF JEFFERSON	Exits	2	0	3	0	0	0	0	0	2	2	3	1	13	2
JF JEFFERSON	OOH Last Day of the Month	30	28	22	25	25	25	25	25	24	24	23	27		25
LB LABETTE	Removals	3	3	12	3	1	3	0	1	2	9	2	6	45	4
LB LABETTE	Exits	0	3	1	9	4	2	1	3	0	4	3	2	32	3
LB LABETTE	OOH Last Day of the Month	56	55	63	60	61	60	63	63	63	65	69	72		63
LN LINN	Removals	3	0	5	0	7	2	3	5	2	0	1	0	28	4
LN LINN	Exits	4	6	0	1	1	0	0	3	11	1	1	4	32	4
LN LINN	OOH Last Day of the Month	40	31	31	35	41	43	48	50	41	40	40	36		40
MS MARSHALL	Removals	6	5	3	2	1	3	1	1	8	1	1	0	32	3
MS MARSHALL	Exits	4	5	1	3	0	1	1	0	0	2	2	6	25	3
MS MARSHALL	OOH Last Day of the Month	33	35	37	35	36	36	36	37	45	46	41	34		38

MI MIAMI	Removals	1	2	4	4	3	1	1	2	5	1	7	7	38	3
MI MIAMI	Exits	2	3	3	1	5	3	3	4	2	0	1	2	29	3
MI MIAMI	OOH Last Day of the Month	90	88	87	90	90	85	81	81	83	83	91	96		87
MG MONTGOMERY	Removals	11	4	1	11	3	2	5	7	16	8	10	4	82	7
MG MONTGOMERY	Exits	5	11	4	6	1	5	4	3	6	2	1	7	55	5
MG MONTGOMERY	OOH Last Day of the Month	148	145	144	152	151	148	147	151	161	167	179	176		156
NM NEMAHA	Removals	0	1	0	1	3	0	1	3	1	0	0	2	12	2
NM NEMAHA	Exits	0	1	1	0	0	0	0	0	0	2	0	0	4	1
NM NEMAHA	OOH Last Day of the Month	4	5	3	4	7	7	8	11	12	11	10	13		8
NO NEOSHO	Removals	7	6	1	1	2	5	4	2	2	1	1	4	36	3
NO NEOSHO	Exits	1	9	0	2	6	2	1	5	8	3	8	7	52	5
NO NEOSHO	OOH Last Day of the Month	77	75	78	77	76	80	82	77	72	69	62	59		74
OS OSAGE	Removals	0	0	0	0	0	0	1	3	0	3	0	0	7	2
OS OSAGE	Exits	0	0	0	0	2	2	0	0	1	0	0	0	5	2
OS OSAGE	OOH Last Day of the Month	27	27	26	26	25	21	21	22	21	24	24	26		24
PT POTTAWATOMIE	Removals	5	0	1	1	1	1	6	7	0	3	0	9	34	4
PT POTTAWATOMIE	Exits	3	3	1	3	2	1	1	2	6	3	4	0	29	3
PT POTTAWATOMIE	OOH Last Day of the Month	37	33	32	32	30	30	39	44	32	35	28	38		34
SN SHAWNEE	Removals	18	19	21	28	18	8	24	11	25	31	16	9	228	19
SN SHAWNEE	Exits	12	12	9	11	25	20	13	6	9	12	16	17	162	14
SN SHAWNEE	OOH Last Day of the Month	706	706	722	734	739	731	731	742	763	772	775	762		740
WB WABAUNSEE	Removals	0	0	0	0	0	0	2	3	3	0	5	1	14	3
WB WABAUNSEE	Exits	1	0	0	0	0	0	0	3	1	0	1	5	11	2
WB WABAUNSEE	OOH Last Day of the Month	10	8	8	9	9	9	11	11	13	10	14	11		10
WL WILSON	Removals	2	3	6	7	0	5	3	0	4	3	0	1	34	4
WL WILSON	Exits	4	2	1	0	0	0	2	4	0	3	0	0	16	3
WL WILSON	OOH Last Day of the Month	28	29	34	41	41	46	49	45	49	51	49	50		43
WO WOODSON	Removals	3	0	0	0	0	1	1	3	0	0	0	0	8	2
WO WOODSON	Exits	3	0	0	4	3	0	0	1	0	0	0	0	11	3
WO WOODSON	OOH Last Day of the Month	20	19	19	15	9	10	11	10	11	11	13	14		14
AT ATCHISON	Removals	3	3	8	3	2	1	1	3	7	1	0	1	33	3
AT ATCHISON	Exits	1	8	0	1	3	0	2	0	2	3	4	5	29	3
AT ATCHISON	OOH Last Day of the Month	57	55	63	66	65	64	64	67	69	68	64	59		63
DG DOUGLAS	Removals	3	13	6	6	5	1	9	6	3	5	12	2	71	6
DG DOUGLAS	Exits	3	3	11	2	4	13	2	4	4	4	5	1	56	5
DG DOUGLAS	OOH Last Day of the Month	183	195	197	204	204	189	193	196	194	193	200	203		196
JO JOHNSON	Removals	10	26	23	28	10	22	30	26	19	17	29	17	257	21
JO JOHNSON	Exits	29	53	12	28	28	22	19	24	30	26	27	24	322	27
JO JOHNSON	OOH Last Day of the Month	603	577	577	576	561	564	576	570	556	565	569	567		572
LV LEAVENWORTH	Removals	2	9	4	6	5	12	9	3	13	14	7	3	87	7
LV LEAVENWORTH	Exits	12	13	11	6	5	8	5	6	5	12	1	2	86	7
LV LEAVENWORTH	OOH Last Day of the Month	203	212	202	183	183	184	184	180	192	197	203	200		194
WY WYANDOTTE	Removals	24	18	41	25	18	36	20	22	44	31	29	23	331	28
WY WYANDOTTE	Exits	29	28	15	16	21	29	15	13	24	35	30	23	278	23
WY WYANDOTTE	OOH Last Day of the Month	636	625	653	659	654	658	666	671	695	715	701	692		669
BT BARTON	Removals	6	4	7	5	14	6	10	7	11	12	10	6	98	8
BT BARTON	Exits	18	13	4	3	13	11	10	6	1	1	7	9	96	8
BT BARTON	OOH Last Day of the Month	125	120	122	125	132	124	125	125	135	150	151	146		132

CS CHASE	Removals	0	2	0	0	0	2	0	0	0	0	0	4	2
CS CHASE	Exits	0	0	0	0	0	6	1	0	1	0	1	9	2
CS CHASE	OOH Last Day of the Month	5	7	14	14	14	15	14	14	13	13	12	12	12
CN CHEYENNE	Removals	0	0	0	0	0	1	0	0	0	0	0	1	1
CN CHEYENNE	Exits	0	0	0	0	1	0	0	1	0	0	2	0	4
CN CHEYENNE	OOH Last Day of the Month	4	4	4	4	3	4	4	3	3	3	3	1	3
CA CLARK	Removals	0	0	0	0	0	0	0	1	0	0	0	0	1
CA CLARK	Exits	0	0	0	0	0	0	0	0	0	0	0	0	0
CA CLARK	OOH Last Day of the Month	3	3	3	3	3	3	3	4	4	4	4	4	3
CY CLAY	Removals	1	0	2	0	0	0	0	1	0	0	0	0	4
CY CLAY	Exits	0	1	0	0	0	0	0	2	2	0	0	2	7
CY CLAY	OOH Last Day of the Month	17	16	18	18	18	18	17	16	14	14	14	12	16
CD CLOUD	Removals	7	9	3	7	4	3	1	6	7	6	2	3	58
CD CLOUD	Exits	3	7	3	1	2	7	3	3	0	1	4	0	34
CD CLOUD	OOH Last Day of the Month	34	34	34	46	48	43	41	39	45	52	52	53	43
CM COMANCHE	Removals	0	0	0	0	0	0	0	0	0	0	0	0	0
CM COMANCHE	Exits	0	0	0	3	2	0	0	0	0	0	0	0	5
CM COMANCHE	OOH Last Day of the Month	7	7	7	7	4	2	2	2	2	2	2	2	4
DC DECATUR	Removals	0	0	0	0	0	0	0	0	0	0	0	0	0
DC DECATUR	Exits	1	0	0	0	0	0	0	0	0	0	0	0	1
DC DECATUR	OOH Last Day of the Month	0	0	0	0	0	0	0	0	0	0	0	0	0
DK DICKINSON	Removals	2	3	1	13	4	4	3	5	2	2	3	3	45
DK DICKINSON	Exits	3	4	1	3	7	6	1	0	3	2	5	6	41
DK DICKINSON	OOH Last Day of the Month	49	48	51	55	52	51	49	59	59	60	57	54	54
ED EDWARDS	Removals	0	5	0	0	0	0	3	0	1	0	0	0	9
ED EDWARDS	Exits	0	0	0	6	0	0	0	0	0	0	1	3	10
ED EDWARDS	OOH Last Day of the Month	11	16	16	12	12	12	15	15	16	16	15	12	14
EL ELLIS	Removals	7	5	8	3	6	4	5	8	5	2	12	5	70
EL ELLIS	Exits	1	3	1	2	6	10	2	3	6	5	16	2	57
EL ELLIS	OOH Last Day of the Month	71	73	74	78	80	70	73	79	77	77	70	73	75
EW ELLSWORTH	Removals	0	1	0	4	3	0	2	0	1	3	4	3	21
EW ELLSWORTH	Exits	1	4	2	0	0	3	0	0	1	0	3	0	14
EW ELLSWORTH	OOH Last Day of the Month	15	12	10	14	17	14	16	16	16	19	20	22	16
FI FINNEY	Removals	6	11	3	3	5	5	5	10	6	2	4	5	65
FI FINNEY	Exits	2	12	1	4	0	8	12	3	1	1	7	8	59
FI FINNEY	OOH Last Day of the Month	79	81	83	82	87	86	80	85	90	90	91	86	85
FO FORD	Removals	5	14	11	3	3	3	7	4	12	4	18	10	94
FO FORD	Exits	2	5	5	12	17	6	4	10	7	4	10	4	86
FO FORD	OOH Last Day of the Month	133	141	146	133	126	120	124	114	121	119	129	136	129
GE GEARY	Removals	1	1	10	11	10	8	7	7	3	6	8	3	75
GE GEARY	Exits	7	1	2	1	7	4	5	11	3	10	8	2	61
GE GEARY	OOH Last Day of the Month	68	66	69	79	82	85	91	91	87	86	81	86	81
GO GOVE	Removals	4	0	0	0	0	0	0	0	0	0	0	0	4
GO GOVE	Exits	0	5	0	0	0	0	0	0	0	0	0	0	5
GO GOVE	OOH Last Day of the Month	5	4	4	4	2	1	1	1	1	1	1	1	2
GH GRAHAM	Removals	0	0	0	0	0	0	0	0	0	1	3	0	4
GH GRAHAM	Exits	0	0	0	0	2	0	0	0	0	0	0	0	2
GH GRAHAM	OOH Last Day of the Month	3	3	6	3	2	1	1	1	1	2	5	5	3

GT GRANT	Removals	1	0	0	1	0	0	0	0	1	0	0	1	4	1
GT GRANT	Exits	0	0	0	0	0	2	0	0	0	0	0	1	3	2
GT GRANT	OOH Last Day of the Month	21	18	18	19	19	17	17	17	18	18	18	18		18
GY GRAY	Removals	0	0	1	0	4	0	0	0	3	1	0	0	9	2
GY GRAY	Exits	0	0	0	0	0	0	1	0	0	2	0	0	3	2
GY GRAY	OOH Last Day of the Month	6	6	6	7	11	11	11	11	13	12	12	12		10
GL GREELEY	Removals	0	0	1	0	0	0	4	0	0	0	0	0	5	3
GL GREELEY	Exits	0	3	0	0	0	0	0	0	0	0	1	0	4	2
GL GREELEY	OOH Last Day of the Month	4	3	4	4	4	4	8	8	8	8	7	7		6
HM HAMILTON	Removals	0	0	0	0	0	0	0	0	0	0	0	0	0	0
HM HAMILTON	Exits	0	0	0	0	0	0	0	0	0	0	0	0	0	0
HM HAMILTON	OOH Last Day of the Month	0	0	0	0	0	0	0	0	0	0	0	0		0
HV HARVEY	Removals	1	3	7	1	3	9	9	3	8	3	14	6	67	6
HV HARVEY	Exits	4	5	6	4	13	2	3	2	3	7	2	2	53	4
HV HARVEY	OOH Last Day of the Month	84	82	81	80	74	80	83	82	88	87	98	102		85
HS HASKELL	Removals	0	2	0	0	0	0	0	0	2	1	0	0	5	2
HS HASKELL	Exits	0	0	0	0	0	0	0	0	0	1	0	0	1	1
HS HASKELL	OOH Last Day of the Month	2	4	4	4	4	3	3	3	5	5	5	5		4
HG HODGEMAN	Removals	0	1	0	0	0	0	0	0	0	0	0	0	1	1
HG HODGEMAN	Exits	2	0	0	0	0	0	0	0	0	0	1	0	3	2
HG HODGEMAN	OOH Last Day of the Month	2	3	3	3	3	3	3	3	3	3	2	2		3
JW JEWELL	Removals	0	3	0	0	0	0	0	0	0	0	1	0	4	2
JW JEWELL	Exits	0	0	1	0	0	1	0	0	0	0	1	1	4	1
JW JEWELL	OOH Last Day of the Month	9	12	12	10	10	9	9	9	9	9	9	9		10
KE KEARNY	Removals	1	0	0	0	0	1	1	3	0	0	6	0	12	2
KE KEARNY	Exits	0	0	1	1	0	0	0	0	0	3	0	1	6	2
KE KEARNY	OOH Last Day of the Month	2	2	2	1	1	4	5	8	8	5	10	10		5
KW KIOWA	Removals	0	0	0	1	0	0	0	0	0	0	0	0	1	1
KW KIOWA	Exits	1	0	0	0	0	0	0	0	0	0	4	1	6	2
KW KIOWA	OOH Last Day of the Month	4	4	4	5	5	5	5	5	5	5	4	0		5
LE LANE	Removals	0	0	0	0	1	0	0	0	3	0	0	0	4	2
LE LANE	Exits	1	0	0	0	0	1	0	0	0	0	0	1	3	1
LE LANE	OOH Last Day of the Month	2	2	2	2	3	2	2	2	5	5	5	4		3
LC LINCOLN	Removals	0	0	0	1	0	4	0	0	0	0	0	0	5	3
LC LINCOLN	Exits	0	0	0	0	1	0	0	0	0	0	0	2	3	2
LC LINCOLN	OOH Last Day of the Month	1	1	1	2	2	1	5	5	5	5	5	3		3
LG LOGAN	Removals	0	2	0	0	0	0	0	0	0	4	0	0	6	3
LG LOGAN	Exits	1	1	0	0	0	0	1	0	0	0	1	0	4	1
LG LOGAN	OOH Last Day of the Month	1	2	2	2	2	2	1	1	1	4	3	4		2
LY LYON	Removals	4	3	14	3	1	3	17	5	11	4	8	9	82	7
LY LYON	Exits	11	3	5	2	7	10	3	9	9	5	7	2	73	6
LY LYON	OOH Last Day of the Month	149	141	154	156	149	139	152	148	150	153	152	158		150
MN MARION	Removals	0	3	0	5	8	2	0	6	3	2	0	2	31	4
MN MARION	Exits	1	4	4	2	1	2	1	1	5	1	5	2	29	2
MN MARION	OOH Last Day of the Month	34	34	30	33	42	38	39	40	41	43	38	37		37
MP MCPHERSON	Removals	2	2	2	7	7	5	1	1	1	0	0	1	29	3
MP MCPHERSON	Exits	3	2	4	4	3	3	5	0	1	0	2	5	32	3
MP MCPHERSON	OOH Last Day of the Month	38	35	33	38	42	44	41	42	42	41	39	31		39

ME MEADE	Removals	0	0	3	0	0	0	0	0	0	0	0	0	3	3
ME MEADE	Exits	0	0	0	0	0	0	0	2	0	0	0	0	2	2
ME MEADE	OOH Last Day of the Month	2	2	5	5	5	5	5	3	3	3	3	3		4
MC MITCHELL	Removals	0	2	1	0	0	0	1	1	2	0	0	3	10	2
MC MITCHELL	Exits	3	0	2	0	0	2	1	0	1	0	0	1	10	2
MC MITCHELL	OOH Last Day of the Month	8	10	8	9	9	7	7	8	9	9	9	11		9
MR MORRIS	Removals	0	6	6	1	0	0	0	1	0	1	0	0	15	3
MR MORRIS	Exits	6	0	2	0	1	3	1	4	1	1	0	2	21	2
MR MORRIS	OOH Last Day of the Month	12	18	22	22	22	19	18	16	15	13	15	12		17
MT MORTON	Removals	0	0	0	0	1	0	0	4	0	0	0	1	6	2
MT MORTON	Exits	0	0	0	0	0	0	1	5	1	0	0	0	7	2
MT MORTON	OOH Last Day of the Month	6	6	6	6	7	7	10	6	4	4	4	5		6
NS NESS	Removals	0	2	0	1	0	0	0	0	0	0	0	0	3	2
NS NESS	Exits	0	0	0	0	0	0	1	0	2	0	0	0	3	2
NS NESS	OOH Last Day of the Month	2	4	4	5	5	5	4	4	2	2	2	2		3
NT NORTON	Removals	0	3	0	1	0	2	5	2	0	0	0	0	13	3
NT NORTON	Exits	0	3	2	0	0	0	1	0	0	4	1	0	11	2
NT NORTON	OOH Last Day of the Month	17	19	15	16	16	18	22	21	21	20	19	19		19
OB OSBORNE	Removals	0	0	0	0	0	0	0	0	1	0	0	0	1	1
OB OSBORNE	Exits	2	0	0	0	0	1	0	0	0	0	0	0	3	2
OB OSBORNE	OOH Last Day of the Month	2	1	1	1	1	1	1	1	2	2	2	2		1
OT OTTAWA	Removals	0	0	0	0	1	0	0	0	2	0	6	0	9	3
OT OTTAWA	Exits	0	2	0	0	0	0	0	0	0	0	1	0	3	2
OT OTTAWA	OOH Last Day of the Month	7	4	4	4	5	5	5	5	7	7	12	12		6
PN PAWNEE	Removals	1	0	4	0	0	0	1	0	2	4	1	0	13	2
PN PAWNEE	Exits	2	3	1	0	1	2	1	1	0	1	3	0	15	2
PN PAWNEE	OOH Last Day of the Month	26	23	26	26	25	19	19	17	20	26	24	24		23
PL PHILLIPS	Removals	3	0	0	2	0	1	1	1	4	0	3	0	15	2
PL PHILLIPS	Exits	0	2	0	1	0	0	2	0	0	0	0	0	5	2
PL PHILLIPS	OOH Last Day of the Month	25	21	22	22	22	24	23	25	29	29	32	32		26
RA RAWLINS	Removals	0	0	0	0	0	0	0	0	0	0	0	0	0	0
RA RAWLINS	Exits	0	0	0	1	0	0	0	0	0	0	0	0	1	1
RA RAWLINS	OOH Last Day of the Month	2	2	2	2	1	1	1	1	1	1	1	1		1
RN RENO	Removals	8	22	16	24	14	6	8	11	37	18	15	14	193	16
RN RENO	Exits	12	13	7	6	25	12	7	8	14	14	19	12	149	12
RN RENO	OOH Last Day of the Month	252	262	274	287	279	270	270	273	291	295	291	291		278
RP REPUBLIC	Removals	5	0	0	5	0	1	0	0	0	1	0	0	12	3
RP REPUBLIC	Exits	2	1	0	5	2	0	0	0	0	1	0	5	16	3
RP REPUBLIC	OOH Last Day of the Month	15	14	14	14	12	12	13	13	13	13	13	8		13
RC RICE	Removals	2	1	0	2	6	0	0	2	2	1	1	2	19	2
RC RICE	Exits	0	2	3	5	1	1	1	0	2	2	0	0	17	2
RC RICE	OOH Last Day of the Month	31	30	29	25	28	27	26	28	28	27	28	30		28
RL RILEY	Removals	2	1	1	2	3	1	6	0	5	6	5	2	34	3
RL RILEY	Exits	2	1	0	4	5	4	2	2	0	0	6	4	30	3
RL RILEY	OOH Last Day of the Month	57	56	58	56	55	52	55	53	60	65	63	56		57
RO ROOKS	Removals	1	0	0	7	0	0	0	2	1	0	0	2	13	3
RO ROOKS	Exits	2	0	0	5	4	0	3	0	1	0	0	1	16	3
RO ROOKS	OOH Last Day of the Month	13	12	12	14	11	10	7	9	9	9	9	10		10

RH RUSH	Removals	1	0	0	0	0	0	1	1	1	0	0	0	4	1
RH RUSH	Exits	0	3	0	0	0	0	0	0	0	0	1	0	4	2
RH RUSH	OOH Last Day of the Month	12	10	9	9	9	9	10	11	12	12	11	11		10
RS RUSSELL	Removals	1	4	2	1	0	0	2	2	1	1	1	2	17	2
RS RUSSELL	Exits	1	0	1	0	0	1	0	1	2	2	5	3	16	2
RS RUSSELL	OOH Last Day of the Month	24	28	32	33	33	32	32	34	36	33	29	28		31
SA SALINE	Removals	3	10	9	15	14	13	7	2	8	21	14	8	124	10
SA SALINE	Exits	9	14	9	4	15	9	4	4	16	4	10	16	114	10
SA SALINE	OOH Last Day of the Month	181	181	183	197	201	204	202	202	194	212	218	219		200
SC SCOTT	Removals	1	0	0	1	1	1	2	4	3	0	3	0	16	2
SC SCOTT	Exits	2	2	0	2	2	0	0	0	1	1	0	3	13	2
SC SCOTT	OOH Last Day of the Month	20	16	16	15	16	14	16	20	21	21	24	21		18
SW SEWARD	Removals	1	4	0	4	1	0	5	2	5	0	1	5	28	3
SW SEWARD	Exits	0	9	1	4	0	2	0	1	1	3	1	7	29	3
SW SEWARD	OOH Last Day of the Month	50	45	44	44	45	43	48	49	53	50	50	47		47
SD SHERIDAN	Removals	0	0	0	0	0	0	0	0	0	0	1	0	1	1
SD SHERIDAN	Exits	2	0	0	0	0	0	0	0	0	0	0	0	2	2
SD SHERIDAN	OOH Last Day of the Month	6	2	1	1	1	1	1	1	1	1	2	2		2
SH SHERMAN	Removals	1	3	0	0	0	2	1	0	0	0	4	0	11	2
SH SHERMAN	Exits	1	1	0	4	0	0	4	0	0	1	4	2	17	2
SH SHERMAN	OOH Last Day of the Month	37	39	39	35	35	37	34	34	34	33	33	31		35
SM SMITH	Removals	1	0	0	0	1	0	0	0	3	1	0	1	7	1
SM SMITH	Exits	1	0	0	0	0	0	0	0	0	0	0	3	4	2
SM SMITH	OOH Last Day of the Month	6	6	6	6	7	7	7	7	10	10	11	9		8
SF STAFFORD	Removals	1	0	5	0	2	2	1	0	0	3	0	1	15	2
SF STAFFORD	Exits	2	0	1	0	0	0	0	0	0	1	0	2	6	2
SF STAFFORD	OOH Last Day of the Month	9	8	12	12	13	16	16	18	18	20	20	19		15
ST STANTON	Removals	0	0	0	0	0	0	0	0	0	0	4	0	4	4
ST STANTON	Exits	0	0	0	0	0	0	0	0	0	0	0	4	4	4
ST STANTON	OOH Last Day of the Month	4	4	4	4	4	4	4	4	4	4	8	4		4
SV STEVENS	Removals	0	0	0	0	1	0	0	0	0	0	0	0	1	1
SV STEVENS	Exits	0	0	0	0	0	0	0	0	0	3	1	0	4	2
SV STEVENS	OOH Last Day of the Month	5	5	5	5	6	6	6	6	6	6	2	2		5
TH THOMAS	Removals	0	2	1	0	2	0	1	1	1	0	0	4	12	2
TH THOMAS	Exits	1	0	1	0	0	3	2	1	0	1	0	0	9	2
TH THOMAS	OOH Last Day of the Month	15	16	16	16	17	14	13	13	13	14	13	17		15
TR TREGO	Removals	0	0	0	0	0	2	0	1	6	0	0	0	9	3
TR TREGO	Exits	1	0	1	3	0	0	0	0	1	0	0	0	6	2
TR TREGO	OOH Last Day of the Month	5	5	4	1	1	3	3	4	9	9	9	9		5
WA WALLACE	Removals	0	0	1	0	0	0	0	0	0	0	0	0	1	1
WA WALLACE	Exits	0	0	0	0	0	2	0	0	0	0	0	0	2	2
WA WALLACE	OOH Last Day of the Month	2	3	3	3	3	2	2	2	2	2	2	2		2
WS WASHINGTON	Removals	0	0	1	0	0	0	0	0	0	2	0	0	3	2
WS WASHINGTON	Exits	0	0	0	1	1	0	0	0	0	0	0	0	2	1
WS WASHINGTON	OOH Last Day of the Month	3	3	5	4	3	3	3	3	3	5	5	5		4
WH WICHITA	Removals	0	0	0	0	0	0	0	0	1	0	0	0	1	1
WH WICHITA	Exits	0	0	0	0	0	0	0	0	0	0	0	0	0	0
WH WICHITA	OOH Last Day of the Month	2	2	2	2	2	2	2	2	3	3	2	2		2

BA BARBER	Removals	0	0	1	0	1	1	0	0	0	0	2	1	6	1
BA BARBER	Exits	1	0	0	0	0	0	0	0	0	0	0	0	1	1
BA BARBER	OOH Last Day of the Month	13	13	14	14	15	16	20	16	15	16	18	19		16
BU BUTLER	Removals	6	11	9	10	10	13	7	9	7	7	9	10	108	9
BU BUTLER	Exits	13	13	9	12	3	13	8	7	7	10	11	2	108	9
BU BUTLER	OOH Last Day of the Month	156	160	154	154	157	156	150	156	157	155	154	161		156
CL COWLEY	Removals	1	2	4	6	5	0	13	2	9	4	14	6	66	6
CL COWLEY	Exits	11	3	1	5	7	10	3	7	3	7	13	6	76	6
CL COWLEY	OOH Last Day of the Month	131	131	133	134	132	118	128	124	129	126	130	126		129
EK ELK	Removals	0	1	0	0	0	0	0	3	0	0	0	0	4	2
EK ELK	Exits	0	0	1	0	0	1	0	0	0	0	1	0	3	1
EK ELK	OOH Last Day of the Month	9	10	9	9	9	8	8	11	11	11	11	10		10
GW GREENWOOD	Removals	1	3	0	6	3	1	1	4	2	0	4	3	28	3
GW GREENWOOD	Exits	1	0	0	2	2	0	2	0	4	1	5	4	21	3
GW GREENWOOD	OOH Last Day of the Month	36	37	32	37	38	37	37	38	43	39	37	36		37
HP HARPER	Removals	0	2	0	1	3	1	0	0	0	4	4	2	17	2
HP HARPER	Exits	0	4	0	2	2	0	1	0	0	0	0	0	9	2
HP HARPER	OOH Last Day of the Month	12	10	10	10	11	12	12	12	12	16	20	22		13
KM KINGMAN	Removals	4	0	4	1	10	0	0	0	4	1	6	1	31	4
KM KINGMAN	Exits	1	1	1	3	4	0	9	2	0	0	3	0	24	3
KM KINGMAN	OOH Last Day of the Month	23	21	26	23	26	27	18	16	18	21	25	25		22
PR PRATT	Removals	2	5	0	0	2	1	5	1	2	6	1	0	25	3
PR PRATT	Exits	3	1	0	4	0	0	0	5	1	0	2	0	16	3
PR PRATT	OOH Last Day of the Month	15	21	26	26	28	24	25	26	24	28	32	32		26
SG SEDGWICK	Removals	35	38	40	57	51	39	53	67	42	61	53	32	568	47
SG SEDGWICK	Exits	36	80	33	26	51	35	26	29	42	45	69	46	518	43
SG SEDGWICK	OOH Last Day of the Month	1044	1010	1016	1040	1067	1053	1084	1125	1137	1144	1129	1115		1,080
SU SUMNER	Removals	3	3	3	2	2	8	4	4	5	9	6	1	50	4
SU SUMNER	Exits	6	6	1	5	6	9	2	8	1	0	2	1	47	4
SU SUMNER	Exits	97	96	96	94	95	95	94	91	90	99	104	104		96

**Data Sources:**

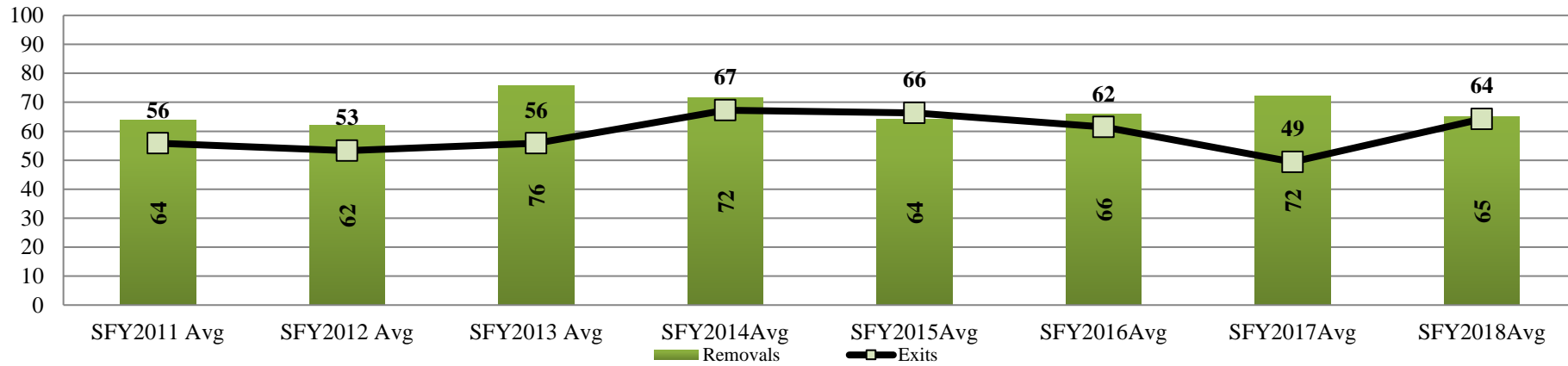
**Removals-** from FACTS

**Exits-** from FACTS

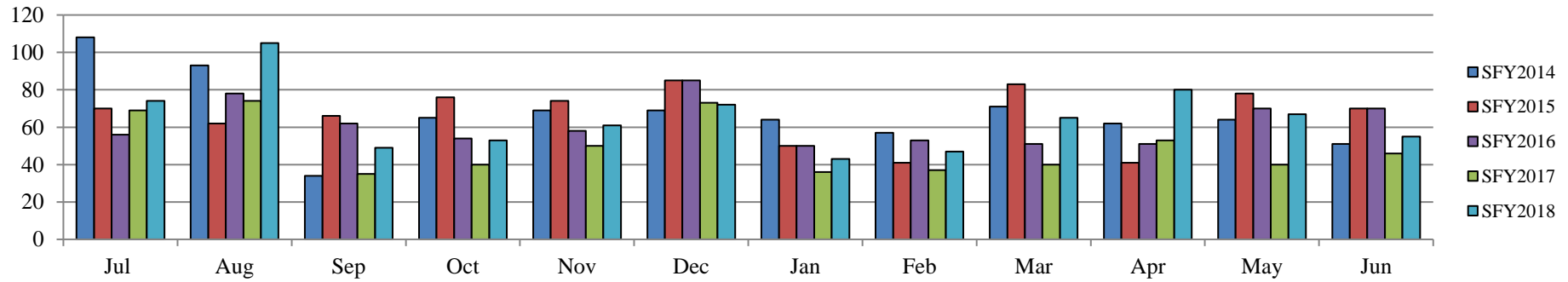
**OOH Last Day of the Month-** from FACTS



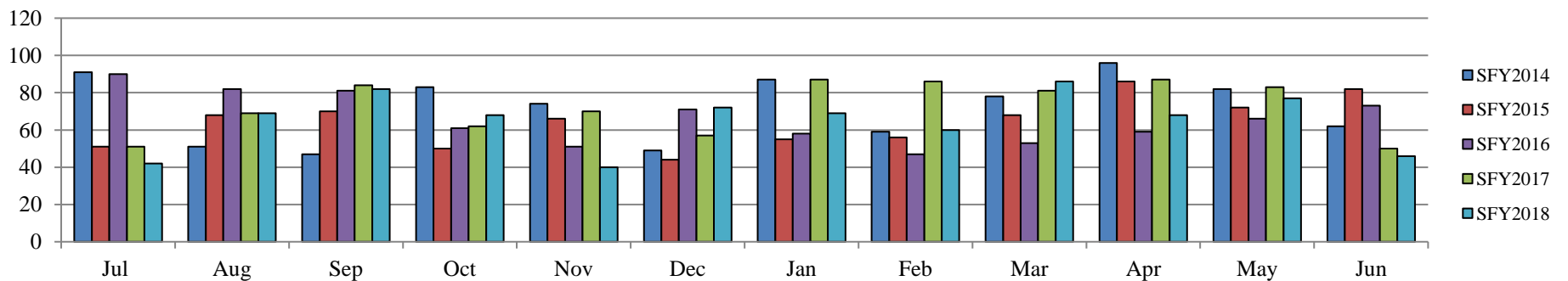
### Kansas City Region Fiscal Year Average Removals and Exits SFY2011-SFY2018



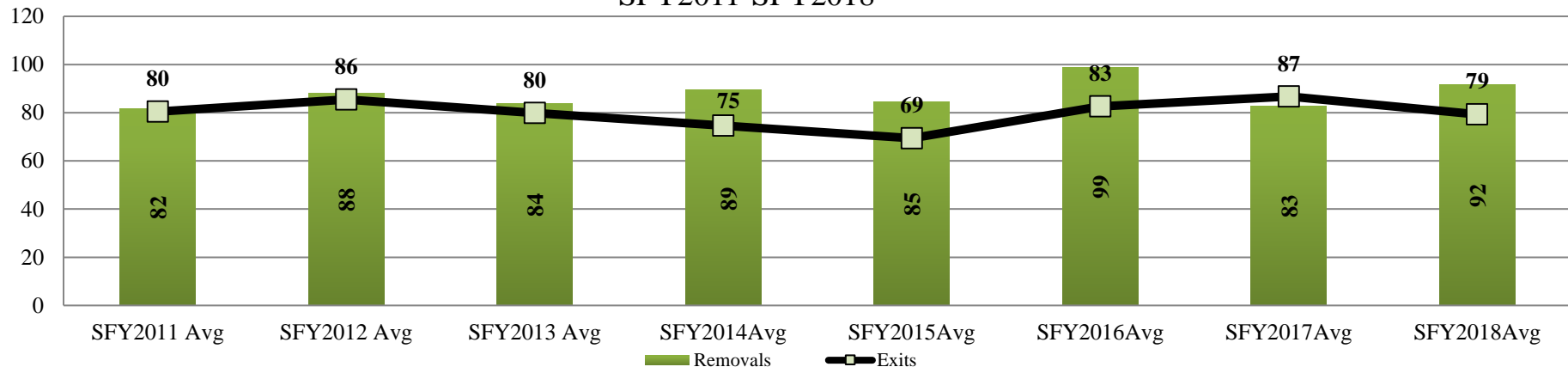
### Kansas City Region Monthly Exits SFY2014-SFY2018



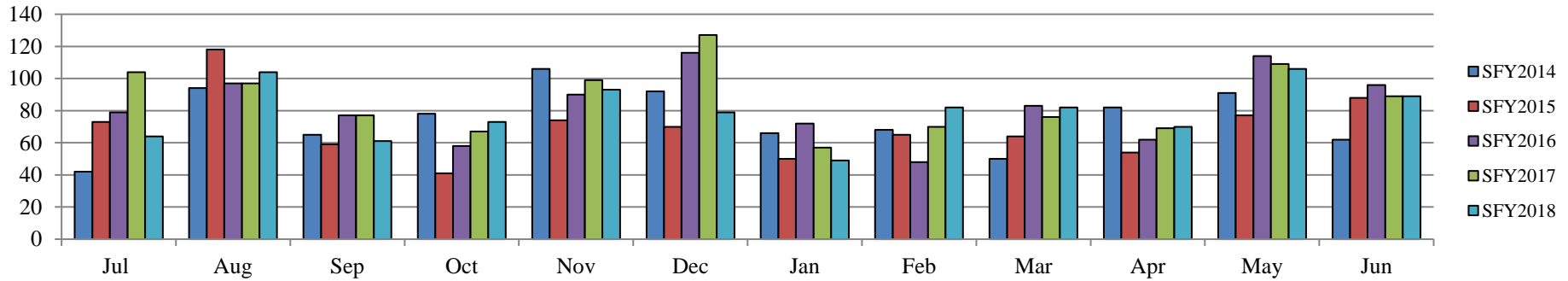
### Kansas City Region Monthly Removals SFY2014-SFY2018



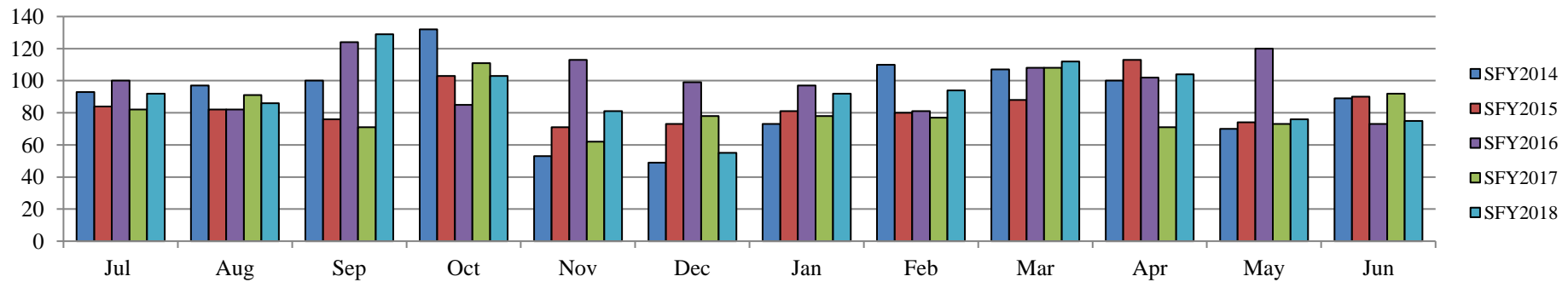
### East Region Fiscal Year Average Removals and Exits SFY2011-SFY2018



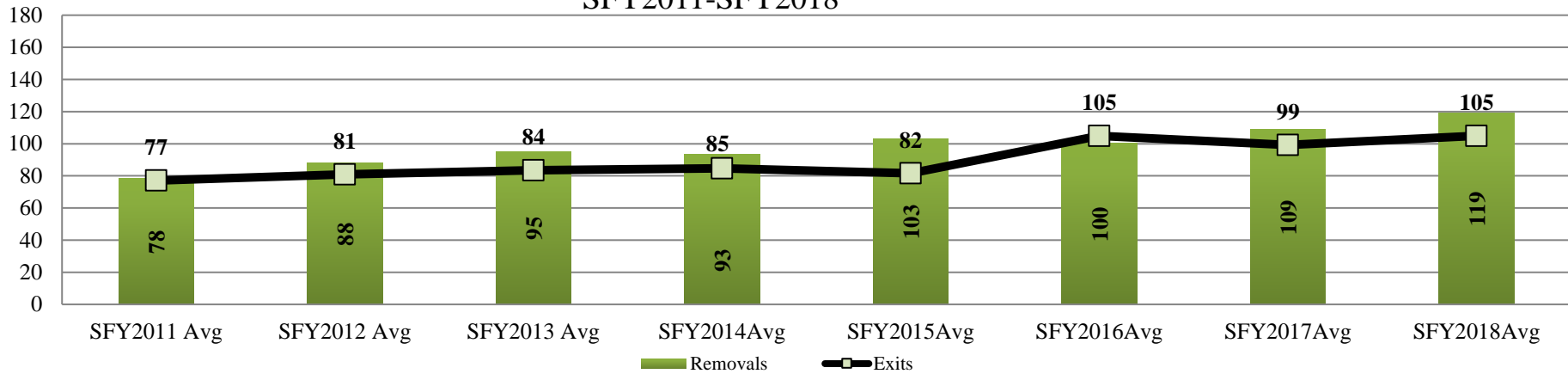
### East Region Monthly Exits SFY2014-SFY2018



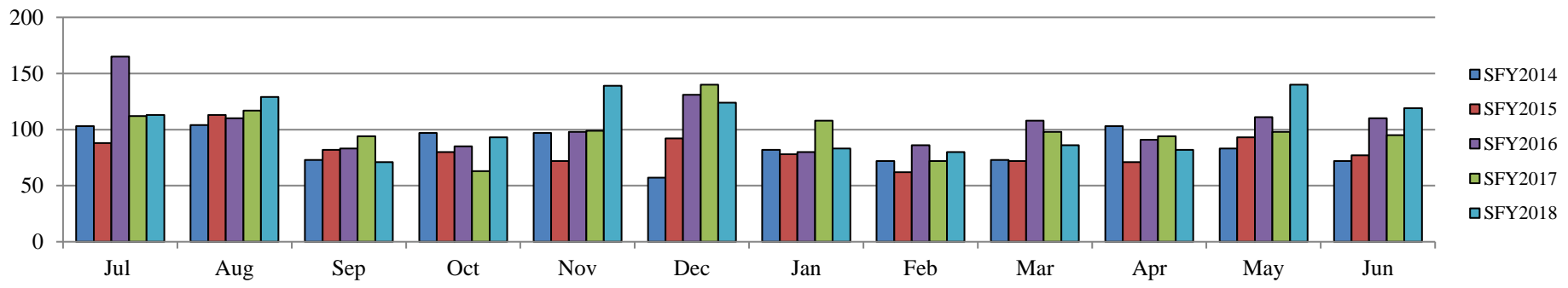
### East Region Monthly Removals SFY2014-SFY2018



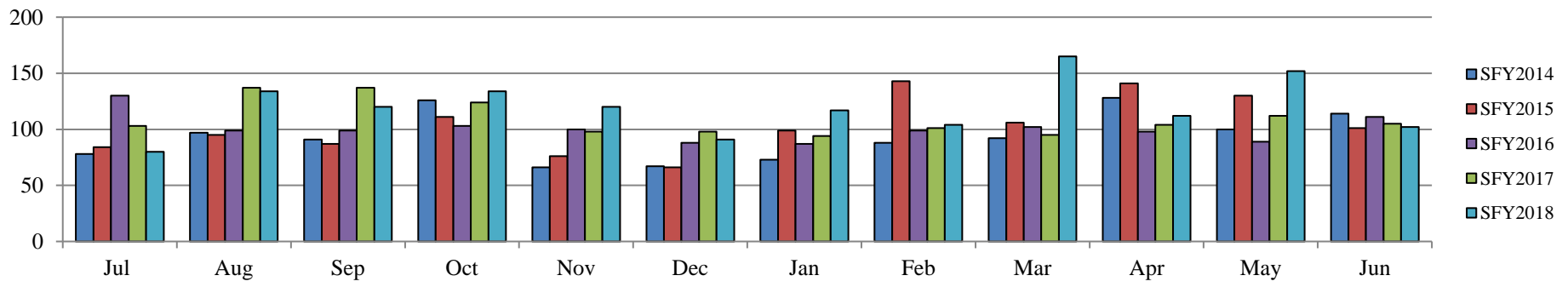
### West Region Fiscal Year Average Removals and Exits SFY2011-SFY2018



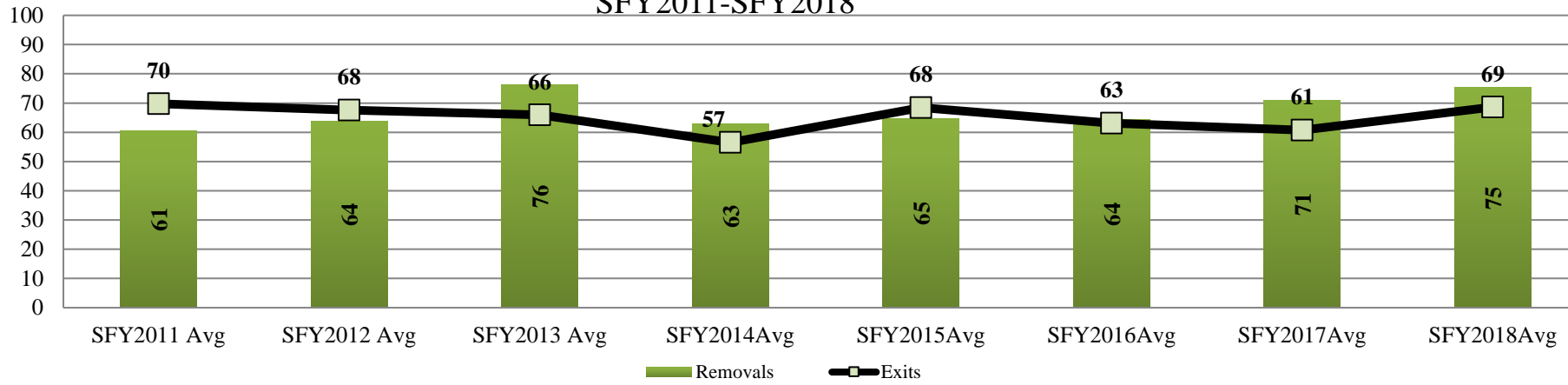
### West Region Monthly Exits SFY2014-SFY2018



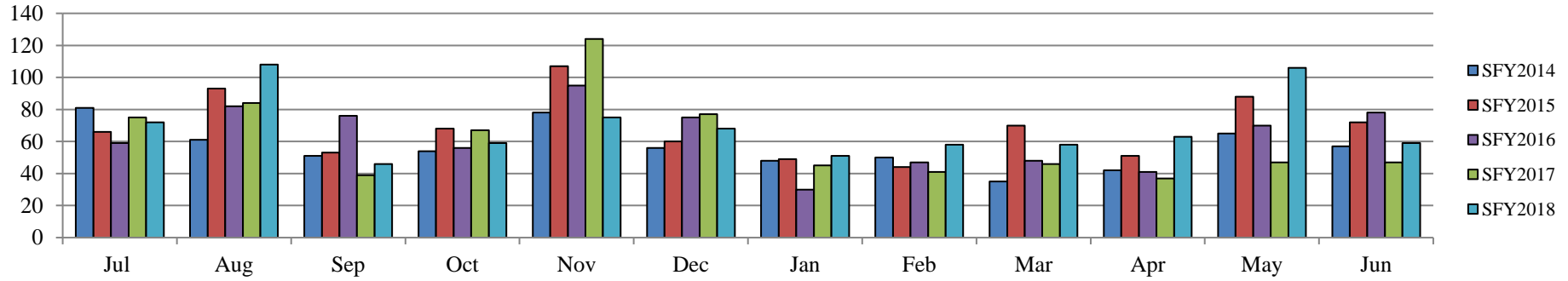
### West Region Monthly Removals SFY2014-SFY2018



Wichita Region Fiscal Year Average Removals and Exits  
SFY2011-SFY2018



Wichita Region Monthly Exits  
SFY2014-SFY2018



Wichita Region Monthly Removals  
SFY2014-SFY2018

