



## FY 2016 Removals, Exits and Out of Home Summary (FACTS)

This report contains information on the number children removed into foster care in a given month, the number of children who exited foster care placement outside of their home in a given month, and the number of children who are in a foster care placement outside of their home (OOH) on the last day of each month. Information is provided by DCF Region and County.

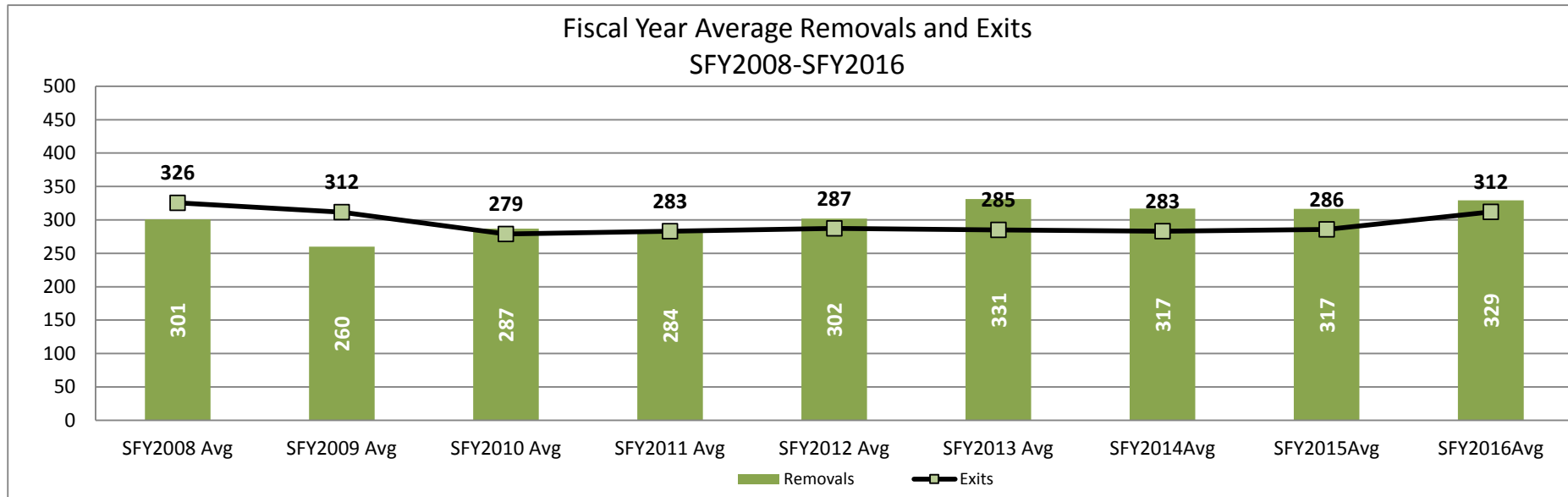
Strong Families Make a Strong Kansas

Updated: 7/22/2016

By DCF Region	Type of Information	Jul	Aug	Sep	Oct	Nov	Dec	Jan	Feb	Mar	Apr	May	Jun	Fiscal year Total	Fiscal year Average
Kansas City Region	Removals	90	82	81	61	51	71	58	47	53	59	66	73	792	66
Kansas City Region	Exits	56	78	62	54	58	85	50	53	51	51	70	70	738	62
Kansas City Region	OOH Last Day of the Month	1407	1418	1445	1449	1443	1429	1433	1437	1447	1454	1449	1448		1,438
East Region	Removals	100	82	124	85	113	99	97	81	108	102	120	73	1,184	99
East Region	Exits	79	97	77	58	90	116	72	48	83	62	114	96	992	83
East Region	OOH Last Day of the Month	1936	1911	1967	2000	2035	2020	2025	2064	2081	2105	2120	2099		2,030
West Region	Removals	130	99	99	103	100	88	87	99	102	98	89	111	1,205	100
West Region	Exits	165	110	83	85	98	131	80	86	108	91	111	110	1,258	105
West Region	OOH Last Day of the Month	1759	1739	1773	1793	1793	1750	1760	1771	1755	1765	1749	1752		1,763
Wichita Region	Removals	71	77	73	52	49	59	42	61	87	65	86	49	771	64
Wichita Region	Exits	59	82	76	56	95	75	30	47	48	41	70	78	757	63
Wichita Region	OOH Last Day of the Month	1420	1396	1406	1389	1348	1331	1340	1364	1402	1438	1456	1424		1,393
State	Removals	391	340	377	301	313	317	284	288	350	324	361	306	3,952	329
State	Exits	359	367	298	253	341	407	232	234	290	245	365	354	3,745	312
State	OOH Last Day of the Month	6522	6464	6591	6631	6619	6530	6558	6636	6685	6762	6774	6723		6,625

\*Beginning in SFY2015 Discharges were replaced by Exits from Out of Home Placements.

Fiscal Year Average Removals and Exits  
SFY2008-SFY2016



**Data Sources:**

Removals- from FACTS

Exits- from FACTS

OOH Last Day of the Month- from FACTS

**Information By County grouped in DCF Regions**

County	Type of Information	Jul	Aug	Sep	Oct	Nov	Dec	Jan	Feb	Mar	Apr	May	Jun	Fiscal year Total	Fiscal year Average
AL ALLEN	Removals	1	4	3	5	7	4	1	4	1	3	2	5	40	3
AL ALLEN	Exits	2	1	12	3	4	5	5	4	4	4	4	10	58	5
AL ALLEN	OOH Last Day of the Month	82	82	70	72	73	76	72	79	78	74	74	63		75
AN ANDERSON	Removals	0	0	0	0	0	0	0	0	0	2	1	3	6	2
AN ANDERSON	Exits	0	0	0	1	0	3	1	0	0	0	0	0	5	2
AN ANDERSON	OOH Last Day of the Month	14	12	12	11	11	8	7	7	7	9	10	13		10
BB BOURBON	Removals	6	1	11	4	9	9	2	0	9	3	1	6	61	6
BB BOURBON	Exits	1	1	5	5	7	9	8	4	8	5	7	4	64	5
BB BOURBON	OOH Last Day of the Month	93	96	102	102	106	99	96	91	88	87	79	79		93
BR BROWN	Removals	10	3	4	13	1	5	2	3	10	9	9	1	70	6
BR BROWN	Exits	4	4	1	0	2	3	3	1	1	3	9	1	32	3
BR BROWN	OOH Last Day of the Month	82	80	83	96	95	94	95	97	106	112	112	113		97
CQ CHAUTAUQUA	Removals	3	0	3	0	3	1	0	0	0	0	0	0	10	3
CQ CHAUTAUQUA	Exits	3	0	4	0	1	0	0	0	0	0	3	0	11	3
CQ CHAUTAUQUA	OOH Last Day of the Month	9	9	8	8	11	11	11	11	11	11	8	8		10
CK CHEROKEE	Removals	3	2	7	3	2	2	11	2	3	5	3	0	43	4
CK CHEROKEE	Exits	6	10	4	8	3	7	3	3	6	1	4	2	57	5
CK CHEROKEE	OOH Last Day of the Month	77	69	72	68	67	63	70	70	69	69	68	66		69
CF COFFEY	Removals	1	0	0	0	0	0	0	0	0	0	5	0	6	3
CF COFFEY	Exits	0	0	0	0	0	0	1	0	0	0	0	1	2	1
CF COFFEY	OOH Last Day of the Month	7	7	7	7	7	7	7	7	7	7	12	10		8
CR CRAWFORD	Removals	9	12	11	5	15	10	6	9	13	14	15	10	129	11
CR CRAWFORD	Exits	11	15	2	6	5	11	9	4	7	4	23	15	112	9
CR CRAWFORD	OOH Last Day of the Month	173	171	182	176	185	189	176	181	190	194	188	190		183
DP DONIPHAN	Removals	0	0	0	5	2	0	2	0	1	4	0	3	17	3
DP DONIPHAN	Exits	0	2	0	0	0	0	0	1	4	0	0	0	7	2
DP DONIPHAN	OOH Last Day of the Month	24	22	22	28	30	30	32	31	28	32	32	35		29
FR FRANKLIN	Removals	3	3	6	0	7	10	2	5	3	6	4	8	57	5
FR FRANKLIN	Exits	2	2	3	3	1	12	0	7	5	3	1	2	41	4
FR FRANKLIN	OOH Last Day of the Month	86	85	89	88	95	98	100	98	95	98	101	106		95
JA JACKSON	Removals	0	0	3	4	2	5	4	3	4	0	5	0	30	4
JA JACKSON	Exits	4	3	1	1	1	6	0	1	3	2	9	3	34	3
JA JACKSON	OOH Last Day of the Month	42	39	41	44	45	44	48	50	51	49	45	43		45
JF JEFFERSON	Removals	0	6	3	1	1	1	3	3	3	0	7	5	33	3
JF JEFFERSON	Exits	1	0	3	2	3	5	2	0	1	0	4	4	25	3
JF JEFFERSON	OOH Last Day of the Month	46	50	51	52	50	45	46	47	47	47	48	50		48
LB LABETTE	Removals	0	0	3	2	0	8	7	1	2	3	2	0	28	4
LB LABETTE	Exits	2	3	0	3	9	3	1	2	0	2	0	2	27	3
LB LABETTE	OOH Last Day of the Month	55	53	58	62	54	58	60	60	61	66	70	67		60
LN LINN	Removals	0	4	2	0	1	0	4	3	2	3	0	1	20	3
LN LINN	Exits	0	2	2	0	5	2	0	0	0	2	0	0	13	3
LN LINN	OOH Last Day of the Month	17	19	22	22	22	17	16	20	22	25	25	26		21
MS MARSHALL	Removals	3	7	2	1	3	1	0	0	1	0	1	3	22	2
MS MARSHALL	Exits	7	7	2	1	2	2	2	0	0	0	2	6	31	3
MS MARSHALL	OOH Last Day of the Month	23	24	24	26	27	25	23	23	25	25	24	21		24

MI MIAMI	Removals	0	8	0	7	3	2	10	12	1	7	7	1	58	6
MI MIAMI	Exits	1	1	4	0	3	6	0	1	0	5	1	2	24	3
MI MIAMI	OOH Last Day of the Month	64	70	66	73	75	69	79	90	87	89	95	94		79
MG MONTGOMERY	Removals	10	3	7	4	9	2	3	6	10	4	2	2	62	5
MG MONTGOMERY	Exits	1	3	2	2	2	14	0	0	5	3	11	4	47	5
MG MONTGOMERY	OOH Last Day of the Month	182	178	183	185	192	186	182	183	187	190	180	186		185
NM NEMAHA	Removals	0	0	1	0	1	1	1	0	4	0	0	0	8	2
NM NEMAHA	Exits	3	0	0	0	0	0	0	0	3	1	0	0	7	2
NM NEMAHA	OOH Last Day of the Month	8	8	9	9	10	11	11	11	13	12	12	12		11
NO NEOSHO	Removals	3	7	9	2	2	5	2	2	5	9	5	8	59	5
NO NEOSHO	Exits	4	8	2	1	6	8	9	3	4	5	5	5	60	5
NO NEOSHO	OOH Last Day of the Month	82	84	91	89	87	83	75	72	71	73	74	76		80
OS OSAGE	Removals	2	3	4	0	0	0	0	1	3	0	1	0	14	2
OS OSAGE	Exits	0	0	0	0	0	1	0	1	3	0	3	1	9	2
OS OSAGE	OOH Last Day of the Month	27	32	36	36	33	32	32	33	32	32	30	29		32
PT POTTAWATOMIE	Removals	0	1	1	1	1	6	2	0	3	2	1	5	23	2
PT POTTAWATOMIE	Exits	0	1	0	0	1	0	2	1	3	3	2	2	15	2
PT POTTAWATOMIE	OOH Last Day of the Month	29	30	30	29	29	35	36	36	35	36	36	37		33
SN SHAWNEE	Removals	35	16	37	22	44	25	31	24	30	22	42	11	339	28
SN SHAWNEE	Exits	25	31	27	21	30	16	21	12	21	16	25	29	274	23
SN SHAWNEE	OOH Last Day of the Month	659	639	653	654	671	683	690	706	715	712	734	714		686
WB WABAUNSEE	Removals	0	0	3	3	0	0	2	0	0	1	4	1	14	2
WB WABAUNSEE	Exits	1	1	0	0	3	3	3	0	0	0	0	2	13	2
WB WABAUNSEE	OOH Last Day of the Month	7	6	9	12	9	6	5	5	5	6	11	10		8
WL WILSON	Removals	8	1	3	2	0	0	0	3	0	5	3	0	25	4
WL WILSON	Exits	1	0	3	0	2	0	1	3	1	3	1	1	16	2
WL WILSON	OOH Last Day of the Month	27	26	26	30	29	28	32	32	31	30	32	31		30
WO WOODSON	Removals	3	1	1	1	0	2	2	0	0	0	0	0	10	2
WO WOODSON	Exits	0	2	0	1	0	0	1	0	4	0	0	0	8	2
WO WOODSON	OOH Last Day of the Month	21	20	21	21	22	23	24	24	20	20	20	20		21
AT ATCHISON	Removals	3	2	1	0	0	0	2	1	1	4	8	3	25	3
AT ATCHISON	Exits	2	1	3	2	0	5	0	0	2	0	0	0	15	3
AT ATCHISON	OOH Last Day of the Month	34	33	31	31	31	26	28	29	28	32	40	43		32
DG DOUGLAS	Removals	1	19	8	6	3	0	3	4	4	4	15	4	71	6
DG DOUGLAS	Exits	2	3	4	3	4	12	4	1	5	3	7	3	51	4
DG DOUGLAS	OOH Last Day of the Month	134	154	156	158	161	147	147	151	155	154	164	160		153
JO JOHNSON	Removals	45	38	31	23	21	26	18	19	29	21	11	30	312	26
JO JOHNSON	Exits	27	39	23	22	34	31	32	21	30	16	33	27	335	28
JO JOHNSON	OOH Last Day of the Month	619	612	620	620	613	607	594	604	600	602	581	582		605
LV LEAVENWORTH	Removals	9	3	9	12	3	8	8	4	5	5	10	16	92	8
LV LEAVENWORTH	Exits	7	7	6	4	4	8	3	2	3	6	4	9	63	5
LV LEAVENWORTH	OOH Last Day of the Month	103	102	104	111	107	106	114	115	119	118	124	128		113
WY WYANDOTTE	Removals	32	20	32	20	24	37	27	19	14	25	22	20	292	24
WY WYANDOTTE	Exits	18	28	26	23	16	29	11	29	11	26	26	31	274	23
WY WYANDOTTE	OOH Last Day of the Month	517	517	534	529	531	543	550	538	545	548	540	535		536
BT BARTON	Removals	15	2	3	11	6	5	4	9	2	11	0	7	75	7
BT BARTON	Exits	13	13	8	4	9	16	5	5	14	7	12	2	108	9
BT BARTON	OOH Last Day of the Month	171	159	154	156	155	140	141	146	135	141	132	134		147



GT GRANT	Removals	0	0	0	2	0	0	0	0	0	5	0	0	7	4
GT GRANT	Exits	3	1	0	0	0	0	0	2	0	0	0	0	6	2
GT GRANT	OOH Last Day of the Month	13	12	12	14	14	14	14	12	12	17	17	17		14
GY GRAY	Removals	0	0	0	2	0	0	0	0	0	0	0	0	2	2
GY GRAY	Exits	1	0	0	0	4	0	2	0	0	0	0	0	7	2
GY GRAY	OOH Last Day of the Month	7	7	7	9	5	5	3	3	3	3	3	4		5
GL GREELEY	Removals	1	0	0	0	0	0	0	0	0	0	0	1	2	1
GL GREELEY	Exits	0	0	0	0	0	0	0	0	0	0	0	0	0	0
GL GREELEY	OOH Last Day of the Month	2	2	2	2	2	2	3	3	3	3	3	4		3
HM HAMILTON	Removals	0	0	0	0	0	0	0	0	0	0	0	0	0	0
HM HAMILTON	Exits	0	0	0	0	0	0	0	0	0	0	0	0	0	0
HM HAMILTON	OOH Last Day of the Month	2	2	2	2	2	2	2	2	2	2	2	2		2
HV HARVEY	Removals	6	9	3	4	3	2	6	3	9	4	1	3	53	4
HV HARVEY	Exits	6	6	2	4	2	8	1	0	1	9	0	5	44	4
HV HARVEY	OOH Last Day of the Month	59	62	65	64	65	59	65	69	76	72	71	70		66
HS HASKELL	Removals	0	0	3	0	0	0	0	0	0	0	0	0	3	3
HS HASKELL	Exits	0	0	0	0	0	0	0	2	0	0	4	0	6	3
HS HASKELL	OOH Last Day of the Month	7	7	12	10	10	10	10	8	8	8	4	4		8
HG HODGEMAN	Removals	0	0	0	0	0	0	0	0	0	0	0	1	1	1
HG HODGEMAN	Exits	0	0	0	0	0	0	0	0	0	0	0	0	0	0
HG HODGEMAN	OOH Last Day of the Month	1	1	1	1	1	1	1	1	1	1	1	2		1
JW JEWELL	Removals	0	1	0	4	0	0	0	2	0	0	0	0	7	2
JW JEWELL	Exits	1	0	0	0	0	0	0	1	0	0	0	1	3	1
JW JEWELL	OOH Last Day of the Month	1	2	2	6	5	6	6	7	7	7	7	6		5
KE KEARNY	Removals	1	0	0	0	0	1	0	0	1	0	2	0	5	1
KE KEARNY	Exits	0	0	0	0	0	0	1	1	1	1	0	1	5	1
KE KEARNY	OOH Last Day of the Month	8	7	7	7	7	8	7	6	6	5	7	6		7
KW KIOWA	Removals	0	0	0	1	0	0	0	0	0	0	0	0	1	1
KW KIOWA	Exits	0	0	0	0	0	0	0	0	0	0	0	0	0	0
KW KIOWA	OOH Last Day of the Month	3	3	3	4	4	4	4	4	4	4	4	4		4
LE LANE	Removals	0	0	0	0	0	0	0	0	0	0	0	0	0	0
LE LANE	Exits	0	1	0	0	0	0	0	0	0	0	0	0	1	1
LE LANE	OOH Last Day of the Month	2	1	1	1	1	1	1	1	1	1	1	1		1
LC LINCOLN	Removals	3	0	0	0	0	0	0	1	0	0	0	0	4	2
LC LINCOLN	Exits	0	1	0	0	2	0	0	0	3	0	0	0	6	2
LC LINCOLN	OOH Last Day of the Month	8	7	7	7	5	5	4	6	3	3	4	4		5
LG LOGAN	Removals	1	0	1	0	2	0	1	0	0	0	0	0	5	1
LG LOGAN	Exits	0	0	0	0	0	1	0	0	0	2	1	1	5	1
LG LOGAN	OOH Last Day of the Month	3	3	4	4	6	5	6	6	6	4	3	2		4
LY LYON	Removals	11	4	1	6	0	6	7	3	5	12	9	10	74	7
LY LYON	Exits	11	8	2	4	5	6	5	3	7	3	3	8	65	5
LY LYON	OOH Last Day of the Month	98	93	99	101	96	94	96	94	91	99	106	108		98
MN MARION	Removals	0	4	1	0	0	1	0	0	4	1	1	0	12	2
MN MARION	Exits	0	1	1	1	1	0	2	1	1	0	0	0	8	1
MN MARION	OOH Last Day of the Month	23	24	23	22	21	22	20	19	23	23	23	24		22
MP MCPHERSON	Removals	3	0	1	0	4	3	2	2	0	1	1	2	19	2
MP MCPHERSON	Exits	0	1	1	0	5	1	0	1	5	1	1	2	18	2
MP MCPHERSON	OOH Last Day of the Month	25	26	27	27	30	33	32	32	30	30	29	29		29

ME MEADE	Removals	0	0	0	1	0	0	0	0	0	0	0	0	1	1
ME MEADE	Exits	0	0	0	0	0	0	0	0	0	1	0	1	1	1
ME MEADE	OOH Last Day of the Month	1	1	2	2	2	2	2	2	2	2	1	1		2
MC MITCHELL	Removals	0	0	0	4	0	1	0	1	4	3	1	1	15	2
MC MITCHELL	Exits	4	0	0	1	5	2	1	2	0	0	0	0	15	3
MC MITCHELL	OOH Last Day of the Month	15	15	15	18	12	12	11	10	14	17	18	19		15
MR MORRIS	Removals	0	1	3	0	2	0	0	0	1	0	1	0	8	2
MR MORRIS	Exits	0	0	0	2	0	0	1	1	2	0	0	1	7	1
MR MORRIS	OOH Last Day of the Month	5	6	8	7	9	9	8	7	6	6	7	6		7
MT MORTON	Removals	2	0	0	0	0	0	0	0	0	0	1	1	4	1
MT MORTON	Exits	0	1	1	0	0	0	1	1	0	0	0	1	5	1
MT MORTON	OOH Last Day of the Month	9	6	6	7	7	7	6	5	5	5	6	6		6
NS NESS	Removals	0	0	0	0	0	0	0	0	0	0	2	0	2	2
NS NESS	Exits	0	1	0	0	0	0	0	0	0	0	0	0	1	1
NS NESS	OOH Last Day of the Month	1	0	0	0	0	0	0	0	0	0	2	2		2
NT NORTON	Removals	1	0	1	1	0	0	0	0	0	2	1	4	10	2
NT NORTON	Exits	0	0	2	0	0	0	0	0	0	0	2	1	5	2
NT NORTON	OOH Last Day of the Month	9	8	7	8	8	8	8	8	8	10	9	12		9
OB OSBORNE	Removals	0	0	0	1	0	0	0	0	0	0	0	3	4	2
OB OSBORNE	Exits	0	0	0	1	0	0	0	0	0	1	0	0	2	1
OB OSBORNE	OOH Last Day of the Month	2	2	2	2	2	2	2	2	2	1	1	4		2
OT OTTAWA	Removals	0	0	3	0	0	0	4	1	0	0	0	4	12	3
OT OTTAWA	Exits	1	0	0	0	0	2	0	0	0	0	1	0	4	1
OT OTTAWA	OOH Last Day of the Month	4	4	7	7	7	6	5	6	6	6	6	10		6
PN PAWNEE	Removals	0	3	2	0	0	2	2	1	0	0	0	0	10	2
PN PAWNEE	Exits	6	1	0	3	0	2	0	0	1	2	2	1	18	2
PN PAWNEE	OOH Last Day of the Month	29	31	33	31	31	31	33	34	33	29	27	27		31
PL PHILLIPS	Removals	4	2	0	0	0	0	0	3	0	0	0	0	9	3
PL PHILLIPS	Exits	0	4	1	2	0	1	0	0	0	0	6	0	14	3
PL PHILLIPS	OOH Last Day of the Month	24	24	23	21	21	20	20	23	23	23	17	17		21
RA RAWLINS	Removals	0	0	0	0	0	0	1	0	0	0	0	0	1	1
RA RAWLINS	Exits	0	0	0	0	0	0	0	0	0	0	1	0	1	1
RA RAWLINS	OOH Last Day of the Month	2	2	2	2	2	2	3	2	2	2	1	1		2
RN RENO	Removals	22	15	14	13	14	10	13	4	15	11	5	12	148	12
RN RENO	Exits	29	17	12	12	8	10	14	12	2	6	13	29	164	14
RN RENO	OOH Last Day of the Month	270	262	264	268	267	267	264	253	268	279	269	251		265
RP REPUBLIC	Removals	1	0	1	0	2	0	0	0	1	1	0	0	6	1
RP REPUBLIC	Exits	1	6	0	2	0	4	0	0	0	0	0	3	16	3
RP REPUBLIC	OOH Last Day of the Month	25	19	19	18	20	16	16	16	17	18	18	15		18
RC RICE	Removals	1	1	2	1	0	0	1	5	2	1	0	3	17	2
RC RICE	Exits	5	2	5	1	1	1	0	0	1	0	1	1	18	2
RC RICE	OOH Last Day of the Month	25	25	22	23	24	27	25	30	27	29	28	31		26
RL RILEY	Removals	1	0	2	2	2	0	1	7	3	0	3	5	26	3
RL RILEY	Exits	6	6	8	3	1	3	0	4	4	0	3	2	40	4
RL RILEY	OOH Last Day of the Month	49	46	42	39	40	36	38	41	35	35	35	39		40
RO ROOKS	Removals	0	0	0	1	0	0	0	0	0	0	1	2	4	1
RO ROOKS	Exits	0	0	0	0	1	1	0	1	0	0	0	0	3	1
RO ROOKS	OOH Last Day of the Month	10	9	9	10	10	9	9	8	8	8	9	11		9



BA BARBER	Removals	0	0	0	0	2	3	0	4	0	0	1	0	10	3
BA BARBER	Exits	0	0	0	0	0	1	1	0	0	0	2	2	6	2
BA BARBER	OOH Last Day of the Month	4	4	4	3	6	9	7	11	11	11	10	8		7
BU BUTLER	Removals	4	11	19	14	5	7	13	16	9	19	9	16	142	12
BU BUTLER	Exits	14	14	9	15	15	9	4	12	6	4	11	7	120	10
BU BUTLER	OOH Last Day of the Month	165	157	168	161	155	151	160	169	173	185	183	194		168
CL COWLEY	Removals	7	13	2	3	5	1	2	1	1	8	7	3	53	4
CL COWLEY	Exits	9	6	12	6	5	4	0	1	5	4	2	7	61	6
CL COWLEY	OOH Last Day of the Month	108	110	106	95	96	94	95	95	90	94	100	96		98
EK ELK	Removals	0	0	0	4	0	0	0	0	1	0	0	0	5	3
EK ELK	Exits	3	1	0	0	0	0	0	0	0	0	0	0	4	2
EK ELK	OOH Last Day of the Month	2	1	1	5	5	5	5	5	5	6	6	6		4
GW GREENWOOD	Removals	1	0	4	3	0	0	0	3	6	4	5	2	28	4
GW GREENWOOD	Exits	1	1	4	0	2	6	0	1	0	3	1	2	21	2
GW GREENWOOD	OOH Last Day of the Month	26	24	28	27	25	21	18	21	26	28	32	31		26
HP HARPER	Removals	2	1	1	0	1	2	1	1	1	0	0	3	13	1
HP HARPER	Exits	0	4	0	0	0	0	1	2	0	0	2	0	9	2
HP HARPER	OOH Last Day of the Month	12	9	10	10	11	13	13	12	13	13	13	14		12
KM KINGMAN	Removals	3	2	2	0	0	1	0	0	0	0	3	0	11	2
KM KINGMAN	Exits	1	10	3	5	0	5	0	0	0	0	0	0	24	5
KM KINGMAN	OOH Last Day of the Month	33	25	24	19	19	15	15	15	15	16	18	18		19
PR PRATT	Removals	0	1	1	0	1	0	2	0	6	0	4	0	15	3
PR PRATT	Exits	1	1	0	2	0	1	0	1	0	3	0	2	11	2
PR PRATT	OOH Last Day of the Month	21	21	21	18	19	18	20	19	25	25	29	27		22
SG SEDGWICK	Removals	53	47	42	23	22	45	23	30	61	32	52	24	454	38
SG SEDGWICK	Exits	29	44	46	25	66	42	17	26	36	24	47	55	457	38
SG SEDGWICK	OOH Last Day of the Month	947	942	939	943	895	896	904	913	938	955	960	927		930
SU SUMNER	Removals	1	2	2	5	13	0	1	6	2	2	5	1	40	4
SU SUMNER	Exits	1	1	2	3	7	7	7	4	1	3	5	3	44	4
SU SUMNER	OOH Last Day of the Month	102	103	105	108	117	109	103	104	106	105	105	103		106

**Data Sources:**

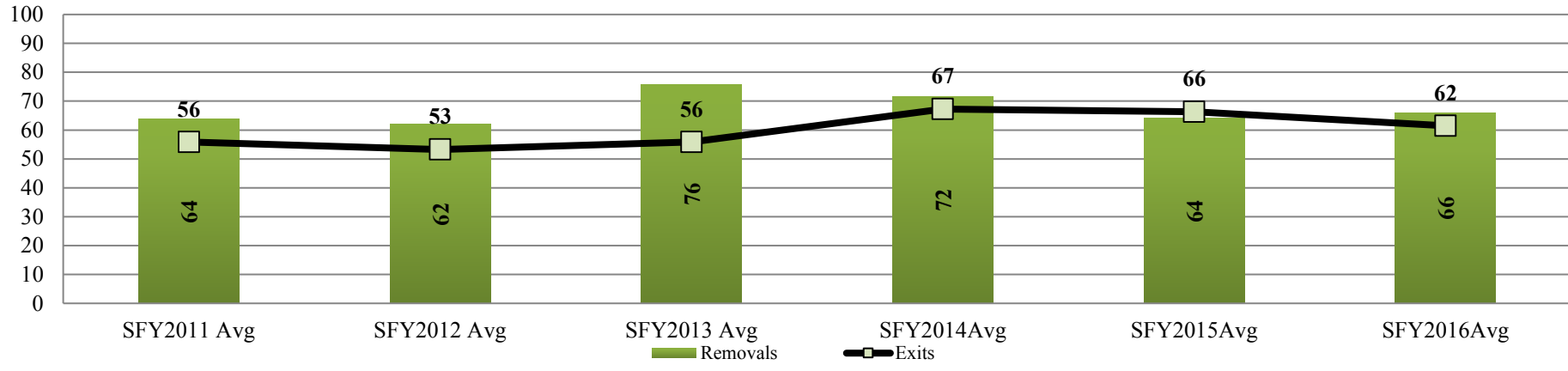
**Removals-** from FACTS

**Exits-** from FACTS

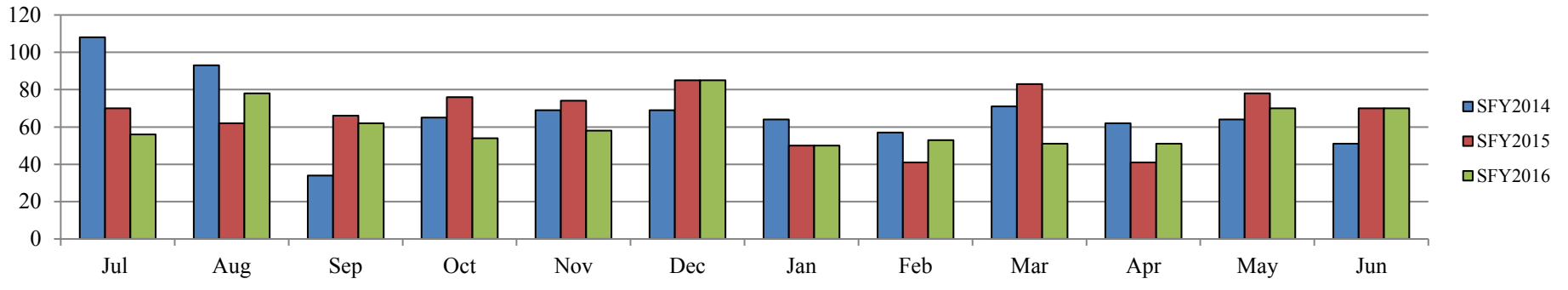
**OOH Last Day of the Month-** from FACTS



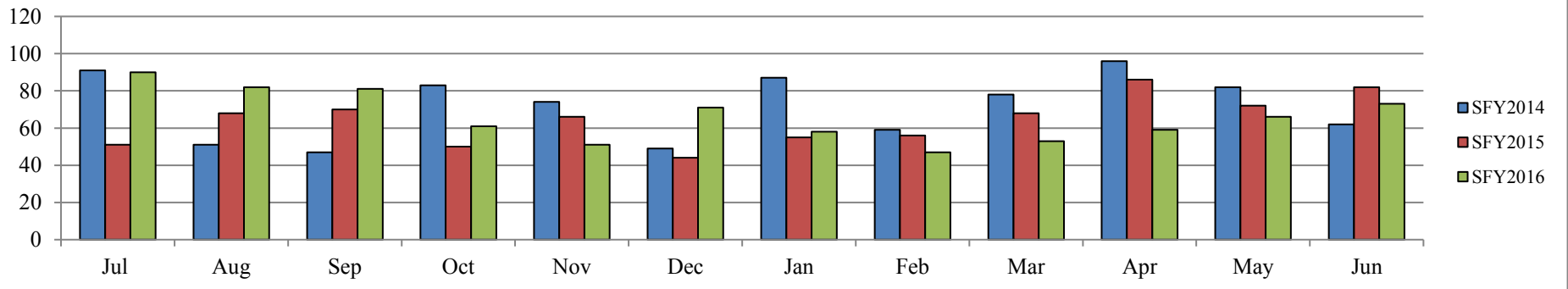
### Kansas City Region Fiscal Year Average Removals and Exits SFY2011-SFY2016

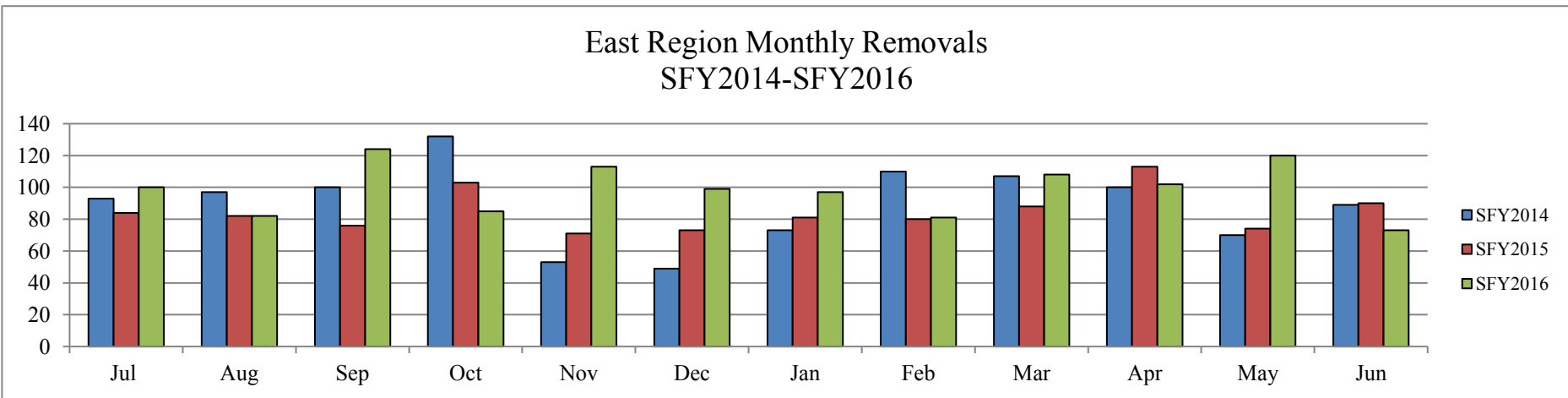
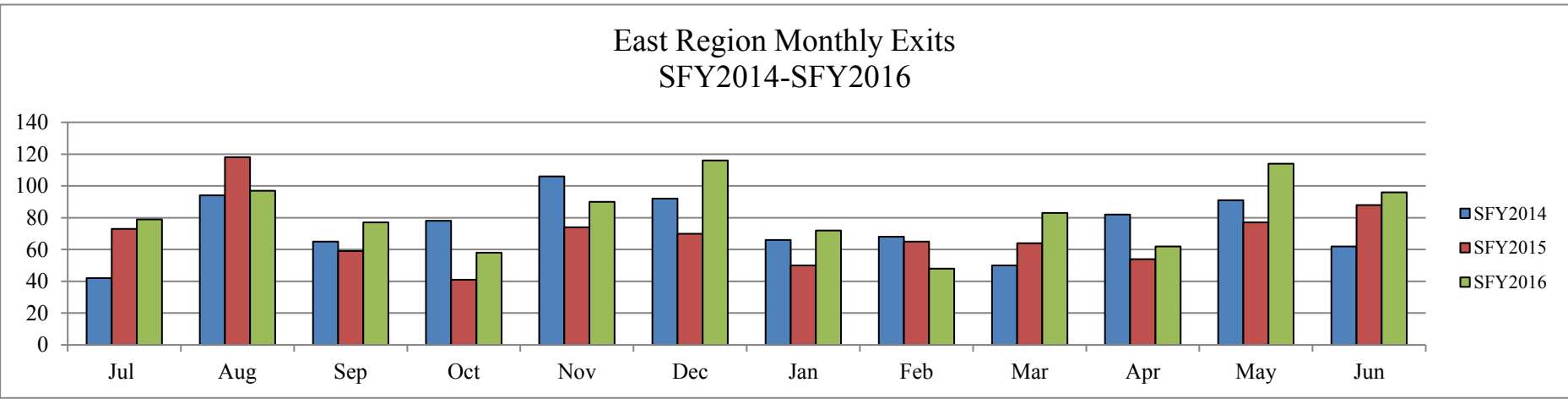
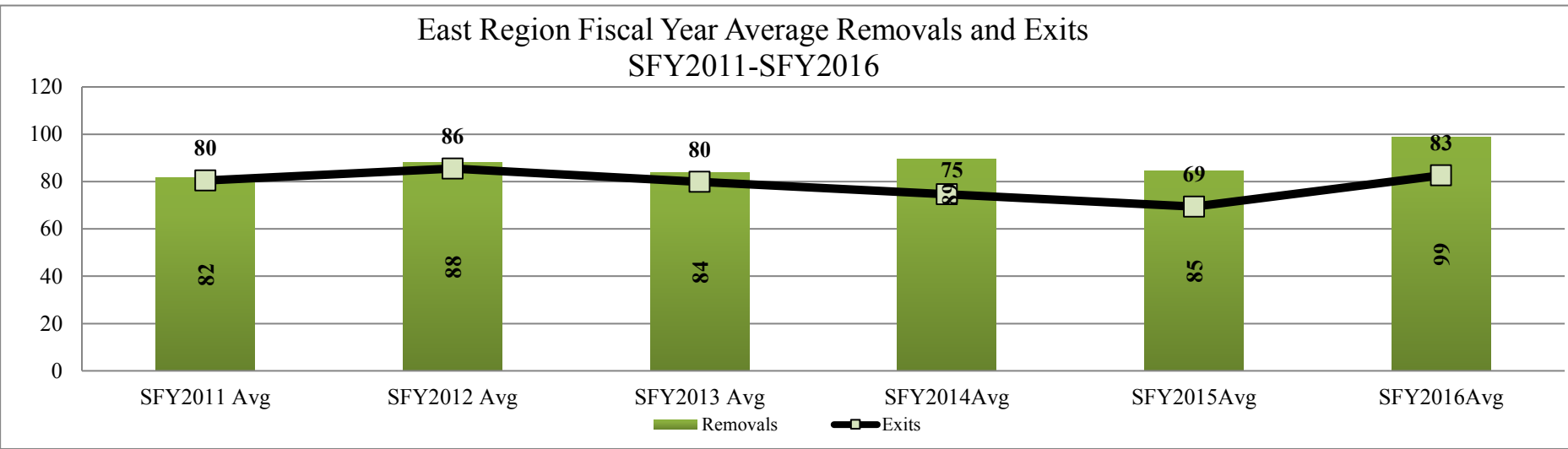


### Kansas City Region Monthly Exits SFY2014-SFY2016

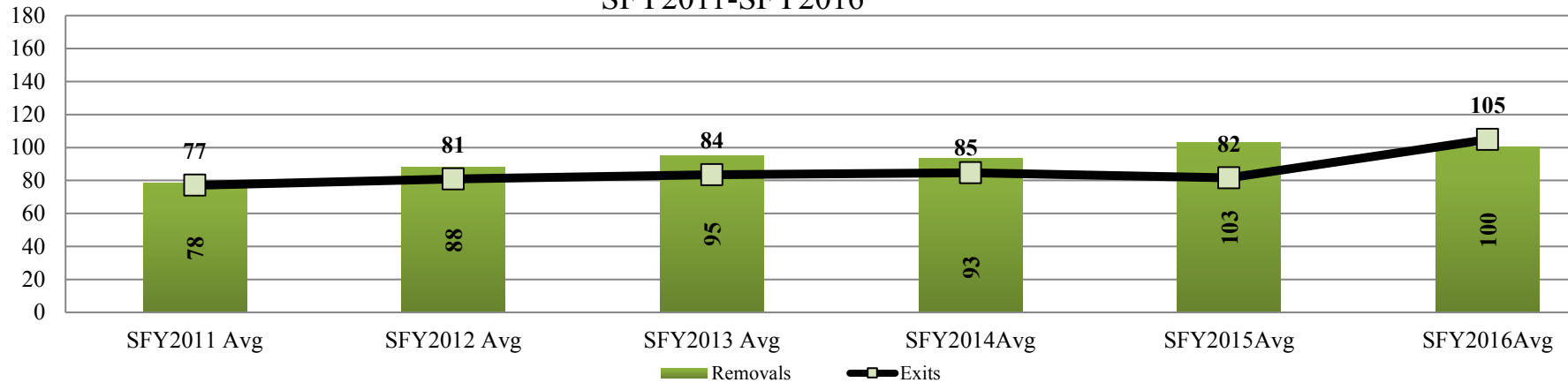


### Kansas City Region Monthly Removals SFY2014-SFY2016

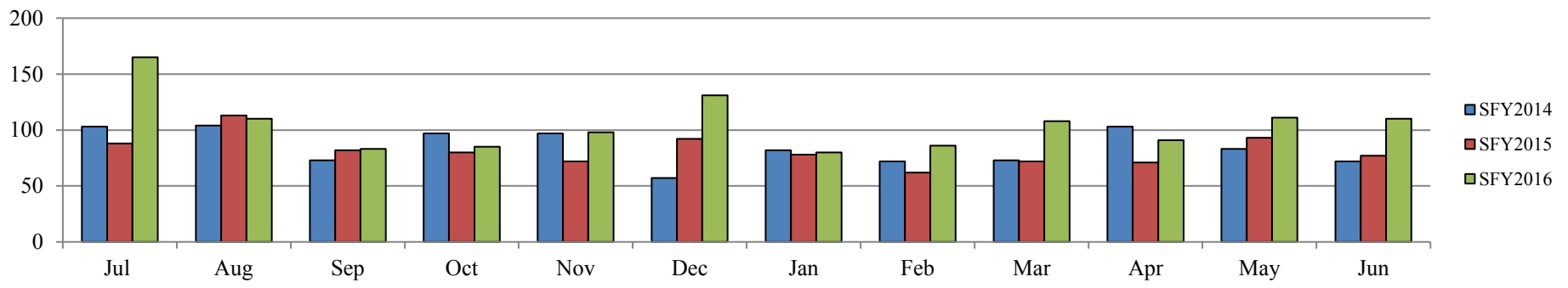




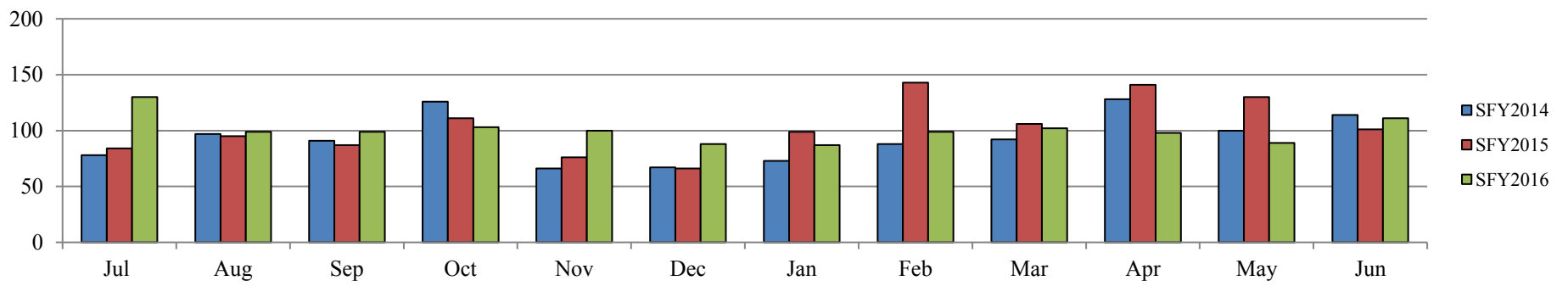
### West Region Fiscal Year Average Removals and Exits SFY2011-SFY2016



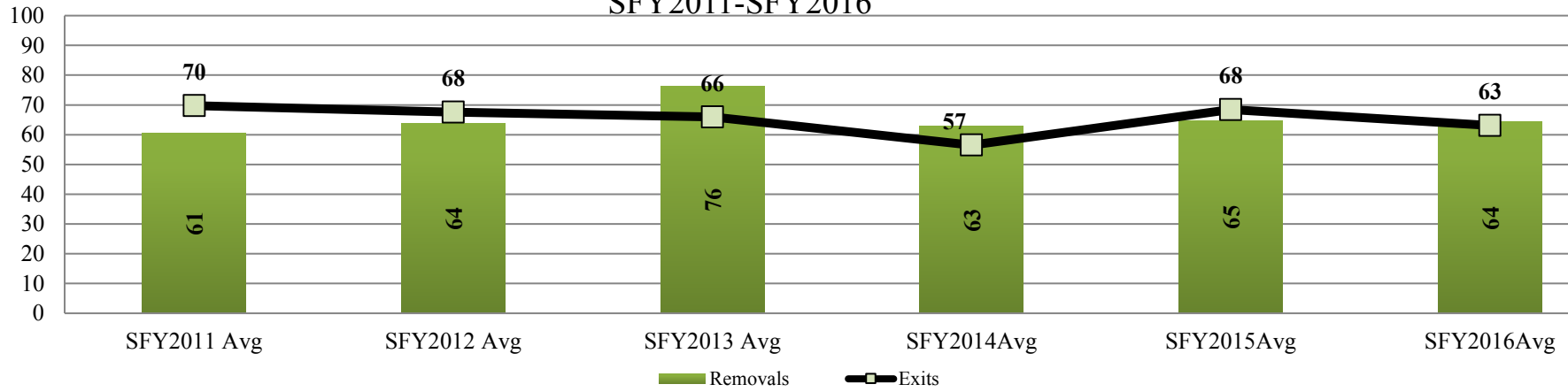
### West Region Monthly Exits SFY2014-SFY2016



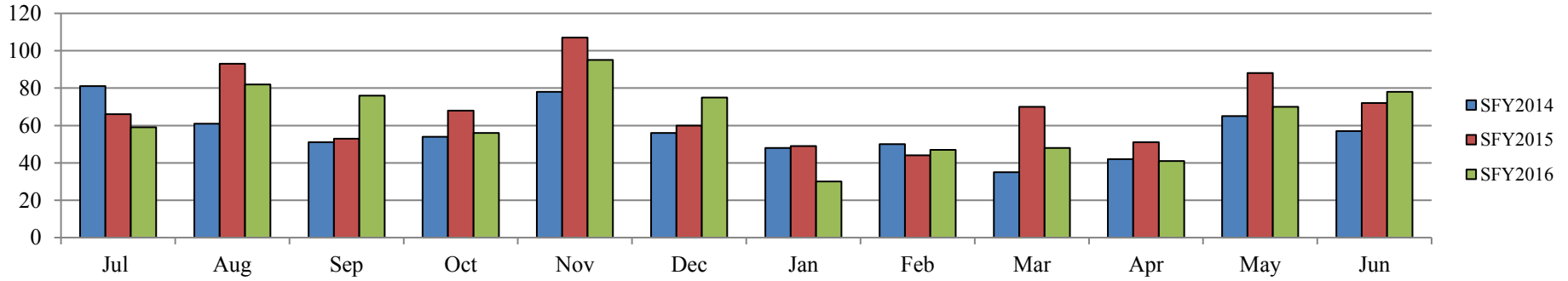
### West Region Monthly Removals SFY2014-SFY2016



### Wichita Region Fiscal Year Average Removals and Exits SFY2011-SFY2016



### Wichita Region Monthly Exits SFY2014-SFY2016



### Wichita Region Monthly Removals SFY2014-SFY2016

