

CHILD WELFARE OVERVIEW

SENATE COMMITTEE ON PUBLIC HEALTH AND WELFARE
SECRETARY LAURA HOWARD | 1.22.2026

DCF MISSION STATEMENT



TO PROTECT CHILDREN, STRENGTHEN FAMILIES, AND PROMOTE ADULT SELF-SUFFICIENCY.



OUR MISSION:

To protect children, strengthen families and promote adult self-sufficiency.

WHAT WE BELIEVE:



PEOPLE HAVE THE CAPACITY:

- To progress
- To succeed
- To grow
- To do well in life



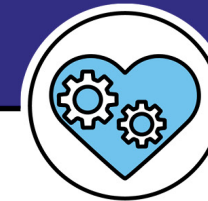
PEOPLE ARE THE EXPERTS ON THEIR LIVES AND HAVE:

- Voices
- Choices
- Needs
- Strengths
- Life Stories



WE VALUE COMMUNITIES AND THE PEOPLE THAT MAKE THEM UNIQUE:

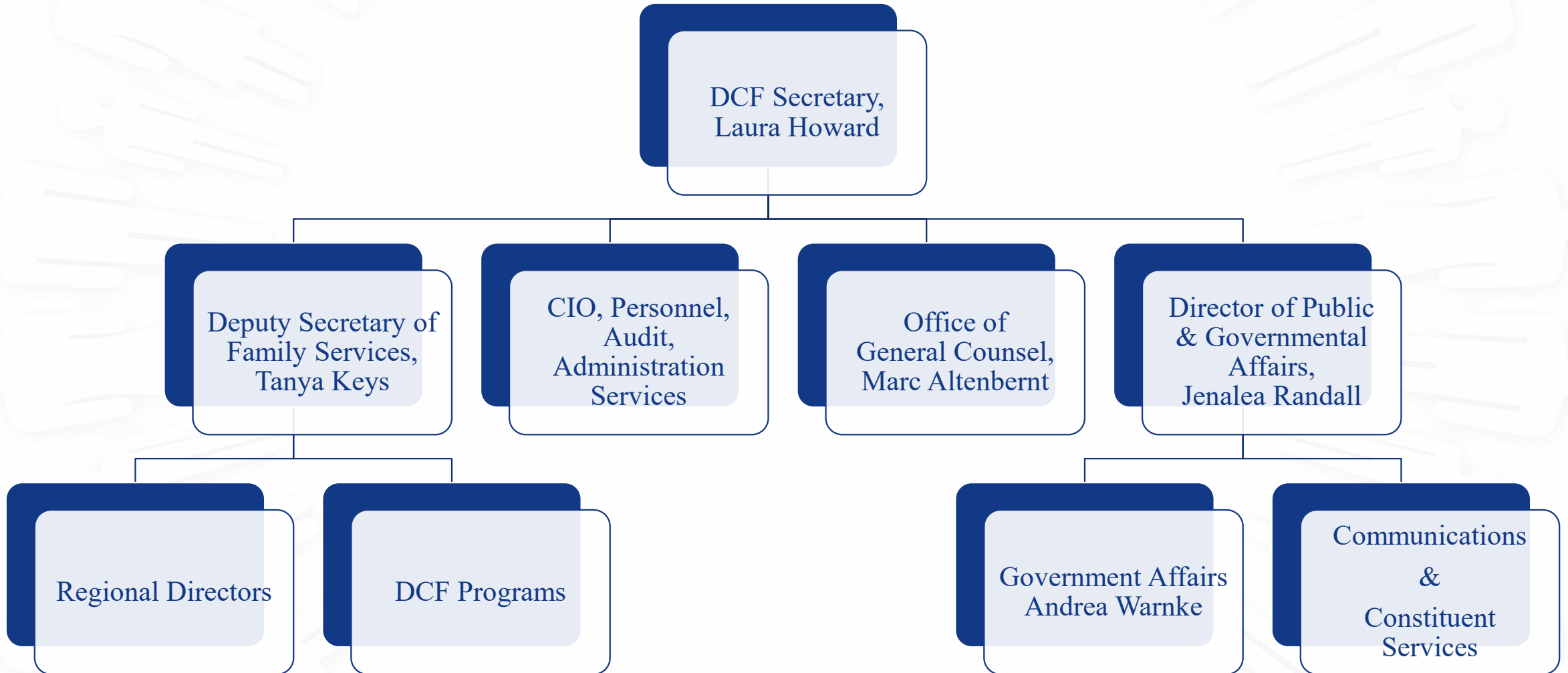
- We honor the whole person
- We rely on each other
- We are partners, not competitors
- We all benefit from a collective impact approach
- Communities bring strength through relationships and resources



WE LEAD WITH AUTHENTICITY, CURIOSITY, AND RESPECT:

- We are innovative
- We are inclusive
- We are experts
- We are leaders
- We are authentic
- We are diverse
- We care about each other, our work and the people we serve
- We share success stories

DCF ADMINISTRATION



ORGANIZATION

DCF Major Programs

- Programs collaborate for family and individual outcome achievement
- Programs are supported by core operations.
- Program and practice are carried out by teams in 36 service centers across 6 Regional Offices



PREVENTION & PROTECTION SERVICES



Director of Prevention – Jennifer Bretsnyder

Director of Permanency – Rebecca Gerhardt

Director of Safety & Thriving Families, Performance Improvement, Learning & Development, and Wellness – Ashley Johnson

Director of Children’s Mental Health & Medicaid – Brenda Soto

PPS helps families and vulnerable adults by providing:

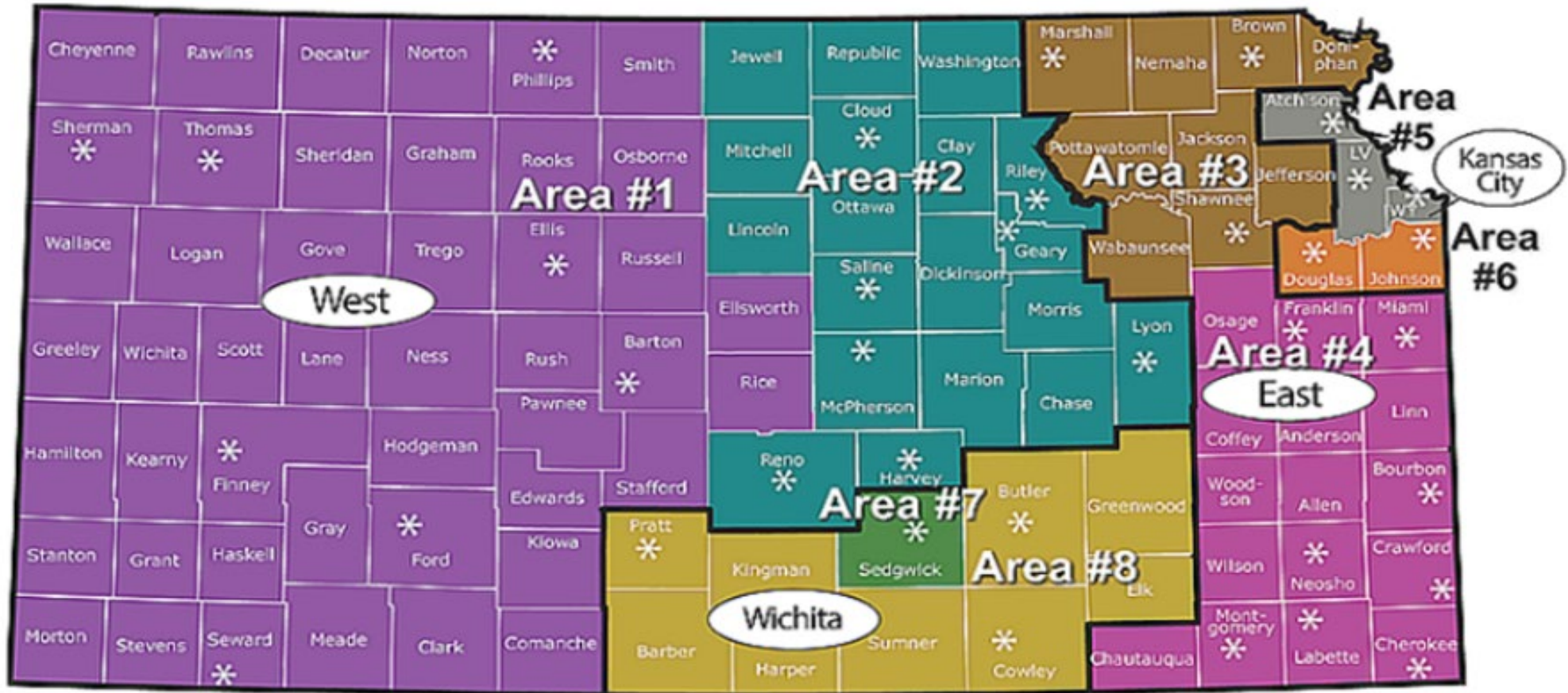
- Protection services (PRC and investigations)
- Family-based assessments
- Family support services
- Family preservation
- Families first prevention services
- Foster care
- Adoption services
- Independent living services for older youth
- Licensing foster homes



Kansas Protection Report Center
1-800-922-5330

FOSTER CARE CASE MANAGEMENT PROVIDERS

FOSTER CARE CONTRACT EFFECTIVE 7/1/24

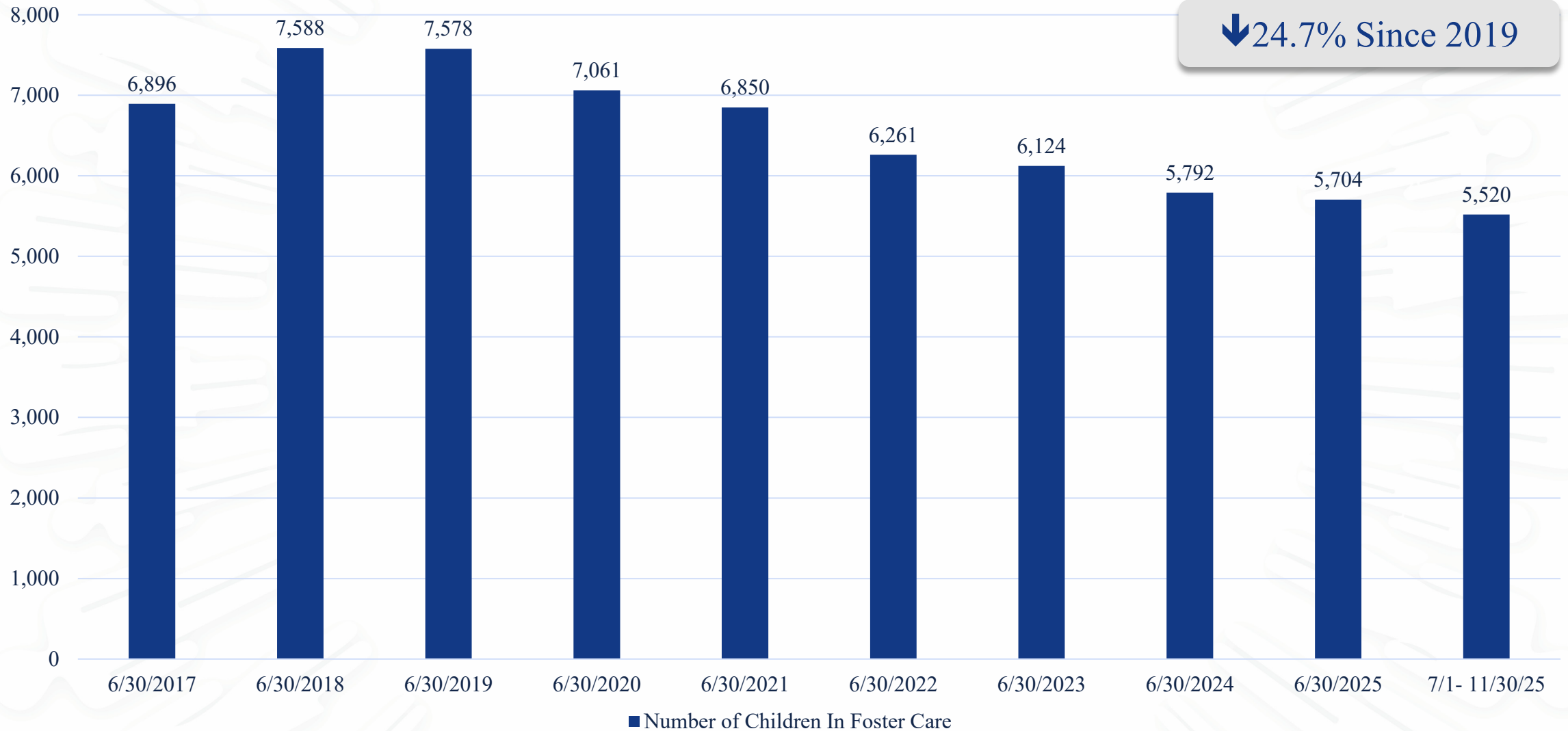


* DCF Service Center

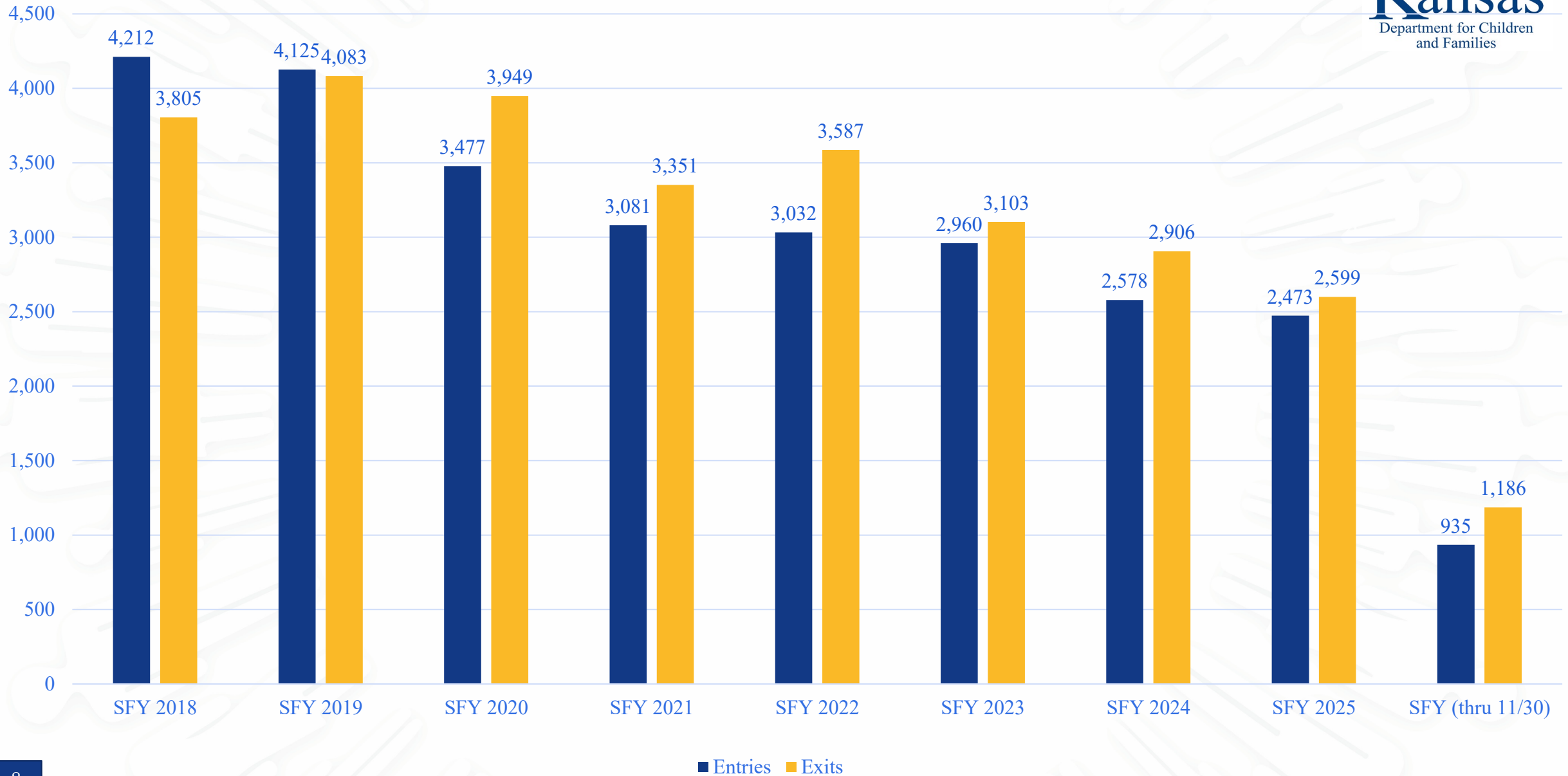
DCF Regions

1	St. Francis Ministries	2	St. Francis Ministries	3	KVC	4	TFI
5	Cornerstones of Care	6	KVC	7	EmberHope	8	TFI

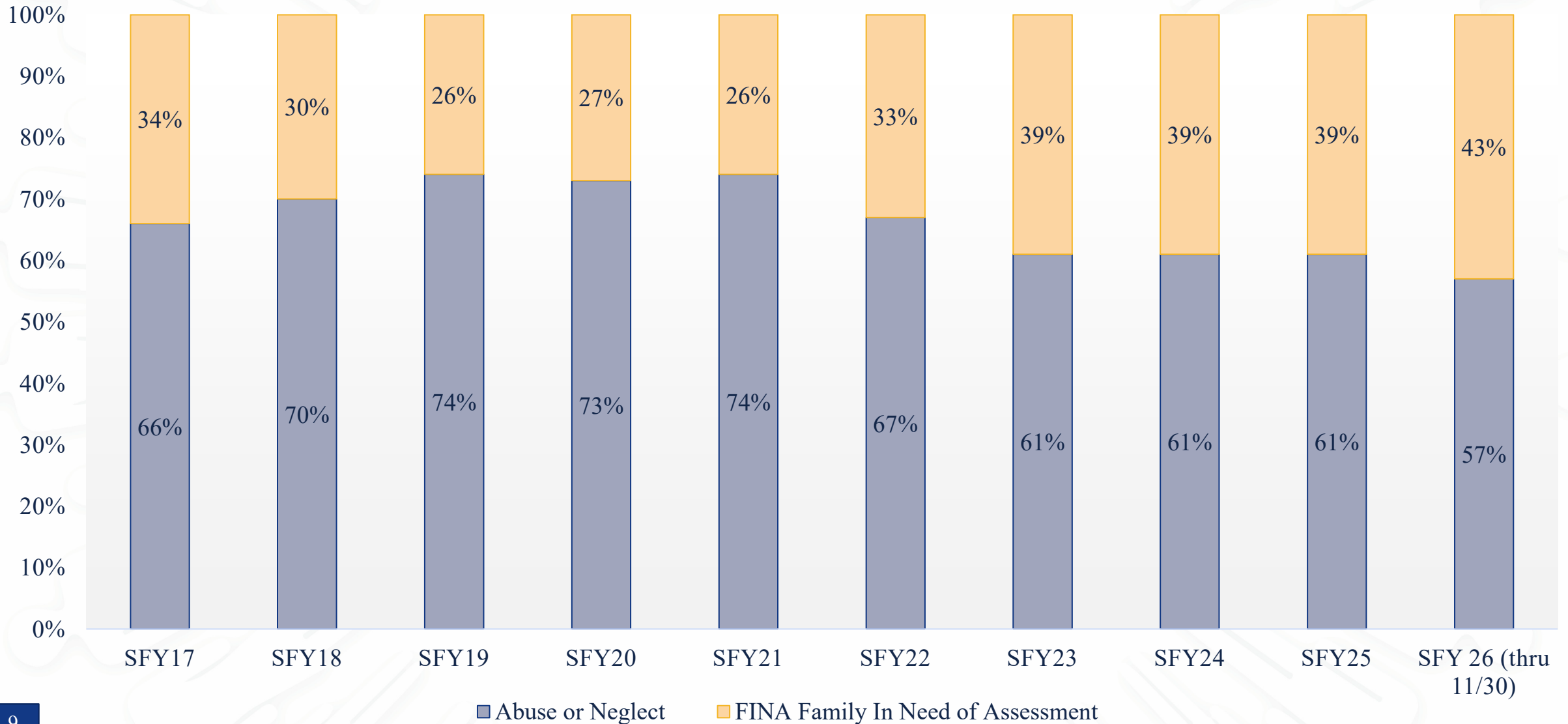
NUMBER OF CHILDREN IN FOSTER CARE



CHILDREN ENTERING & EXITING FOSTER CARE ACROSS YEARS



STATEWIDE CHILDREN ENTERING FOSTER CARE PRIMARY REMOVAL REASON



DCF Caseload Summary



Program	FY 2024 Actual	FY 2025 Actual
Prevention and Protection Services		
Child Protective Services Investigations	24,811	23,963
Family Services Assistance	\$2,141,475	\$2,176,696
Family Preservation Families Referred Assistance	1,515	1,411
Families First Assistance	\$9,820,408	\$9,852,456
Families First Assistance	\$17,099,353	\$20,864,219
Adult Protective Services Investigations Assistance	10,608	10,152
Adult Protective Services Investigations Assistance	\$749,088	\$309,742
Reintegration/Foster Care Average monthly children Assistance	5,923	5,633
Reintegration/Foster Care Average monthly children Assistance	\$299,126,603	\$341,915,643
Adoption Support Average monthly children Assistance	8,910	8,792
Adoption Support Average monthly children Assistance	\$51,993,661	\$52,484,235
SOUL Permanency Average monthly youth Assistance	--	9
SOUL Permanency Average monthly youth Assistance	--	491,500
Permanent Custodianship Average monthly youth Assistance	83	70
Permanent Custodianship Average monthly youth Assistance	\$303,084	\$261,401
Independent Living Persons Assistance	928	927
Independent Living Persons Assistance	\$4,312,748	\$3,808,520

WHAT IS CCWIS

“COMPREHENSIVE CHILD WELFARE INFORMATION SYSTEM”

The CCWIS project modernizes DCF’s child welfare information systems and develops interfaces between the various agencies serving DCF’s Prevention and Protection Services (PPS) and Adult Protective Services (APS) programs.

CCWIS is a:

- **Single, comprehensive case management information system** to be used by DCF and all grantee partners
- System compliant with **standards set by the Federal Government** for which Kansas receives **enhanced reimbursement**
- System designed to support Prevention & Protection Services (PPS) staff needs to organize and record quality case information
- Active Kansas Information Technology Office (KITO) project in ***good standing***.

CCWIS CONTRACT AWARDS

CONTRACTS ANNOUNCED ON JULY 22, 2025



DDI Contract – RedMane Technology LLC

Design, Development, and Implementation (DDI)

The DDI contract is the largest contract for the project, and the contractor will work alongside DCF staff to develop and roll out the new system.

RedMane Technology is a Chicago-based software solutions and systems integration company.

IV&V Contract – Maximus US Services Inc.

Independent Verification and Validation (IV&V)

Maximus brings 23 years of experience, providing IV&V and real-time objective assessment services to the CCWIS project, as well as independent oversight of the DDI contractor's project performance and adherence to schedules and scope of work.

Quality Assurance (QA) - CSG Government Solutions






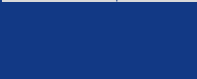

Quality Assurance (QA)

The CSG team offers 25 years of experience delivering quality assurance services for complex health and human services agencies across the country, including multiple active CCWIS projects.

CCWIS PROJECT TIMELINE



State Fiscal Year (SFY)

Project Phases	SFY 2026	SFY 2027	SFY 2028	SFY 2029
Discovery	 November 2025 – February 2026			
Design			February 2026 – December 2027	
Building			August 2026 – March 2028	
Systems Integration Testing				April 2028 – June 2028
User Acceptance Testing			June 2028 – September 2028	
Training			July 2028 – November 2028	
Go Live !!!				 November 2028

HOLIDAY AND WEEKEND RESPONSE

HOUSE BILL 2075 IMPLEMENTATION



On July 1, 2025, DCF began initiating contact with families every day of the week, including holidays, when there is a report from a law enforcement officer about a child who might be a victim of abuse or neglect.

DCF now responds within 24 hours by initiating contact of individuals named and responding back to the referring law enforcement agency.

As in current practice:

- If a law enforcement agency requests DCF hold off on contacting a family, DCF will not contact the family until law enforcement provides further guidance.
- If the alleged circumstance requires a joint investigation by DCF and law enforcement, the child protection specialist or investigator will coordinate with the law enforcement agency on the best way to proceed with contacting the family

HOLIDAY AND WEEKEND RESPONSE (cont.)



HOUSE BILL 2075 IMPLEMENTATION - RESULTS

- From 7/1/25-12/31/25, Kansas saw a **42.62% reduction** in Police Protective Custody's.
- 16% of all PPC's occurred on Saturday's & Sunday's.
- Wichita Region experienced half of all PPC's in the state, followed by the Southwest Region.

PPC Comparison 7/1/24-12/31/24 and 7/1/25-12/31/25

DCF Region	SFY 2025	SFY 2026	Percentage Change
Kansas City	181	125	30.94%
Northeast	125	51	59.2%
Northwest	119	106	10.92%
Southeast	253	102	59.68%
Southwest	214	159	25.70%
Wichita	938	507	45.95%
Total	1830	1050	42.62% decrease



Region	Monday	Tuesday	Wednesday	Thursday	Friday	Saturday	Sunday	Total	Region as %
Kansas City	34	15	18	20	21	13	4	125	11.9%
Northeast	10	10	10	9	9	1	2	51	4.9%
Northwest	17	22	17	30	13	5	2	106	10.1%
Southeast	15	19	16	18	19	6	9	102	9.7%
Southwest	47	29	33	15	23	2	10	159	15.1%
Wichita	88	68	74	92	70	58	57	507	48.3%
Grand Total	211	163	168	184	155	85	84	1,050	100.0%
Day as %	20%	16%	16%	18%	15%	8%	8%	100%	

E.O. 25-01 PRESERVATION OF FEDERAL BENEFITS



Executive Order 25-01 requires DCF to **discontinue the prior practice** of reimbursing the state for the cost of foster care from benefits received by youth due to their own disability or the death, disability, or retirement of a parent.

- No funds reimbursed to DCF from benefit monies received after Jan. 1, 2025
- In partnership with the Kansas Council on Developmental Disabilities (KCDD), the Kansas State Treasurer's Office and Kansas Council for Economic Education, we launched a statewide campaign designed to **expand access to ABLE accounts and financial literacy education to youth with disabilities in foster care.**
- For youth who do not qualify for an ABLE account, their federal benefits are preserved in a personal needs account.
- Since January 2025, DCF, in cooperation with the Kansas State Treasurer's Office, has set up more than **600 ABLE accounts** for youth in foster care.

2026 DCF LEGISLATIVE AGENDA



EXPANDING ELIGIBLE FACILITIES FOR JUVENILE CRISIS INTERVENTION SERVICE FUNDS

- Since the 2018 JCIC law, additional facility-based crisis intervention service program models have been innovated and implemented.
- To build capacity of facility models in communities across Kansas, more crisis intervention facilities would benefit from an ability to access the \$2M funds.
- Proposed amendment to KSA 65-536(h):

*(h) The secretary of corrections may enter into memorandums of agreement with other cabinet agencies to provide funding, not to exceed \$2,000,000 annually, from the evidence-based programs account of the state general fund or other available appropriations for juvenile crisis intervention services **provided by a licensed Juvenile Crisis Intervention Center or other residential facility licensed by the Kansas Department for Children and Families or the Kansas Department for Aging and Disability Services that has a program purpose of behavioral health crisis intervention for juveniles.***

2026 DCF LEGISLATIVE AGENDA



ADOPTION OF REVISED INTERSTATE COMPACT FOR PLACEMENT OF CHILDREN

- The Interstate Compact on the Placement of Children was created in 1960 and adopted in Kansas in 1976.
- New ICPC language was adopted in 2007
 - The rulemaking commission will be made up of the first 35 states to adopt.
 - Over the past 3 years 8 additional states have adopted the new language bringing the total to 20 states including Nebraska, Oklahoma, Missouri, and Colorado.
- Revisions to the ICPC will impact not just foster care children and placements but will guide and clarify language and processes for independent adoptions and parental placements both with individuals and in congregate care facilities across state borders.

QUESTIONS?
