

SENATE PUBLIC HEALTH AND WELFARE
SECRETARY LAURA HOWARD | 1.22.25

DCF MISSION STATEMENT

TO PROTECT CHILDREN, STRENGTHEN FAMILIES, AND PROMOTE
ADULT SELF-SUFFICIENCY.



 **OUR MISSION:**
To protect children, strengthen families
and promote adult self-sufficiency.

WHAT WE BELIEVE:

- 

PEOPLE HAVE THE CAPACITY:

 - To progress
 - To succeed
 - To grow
 - To do well in life
- 

PEOPLE ARE THE EXPERTS ON THEIR LIVES AND HAVE:

 - Voices
 - Choices
 - Needs
 - Strengths
 - Life Stories
- 

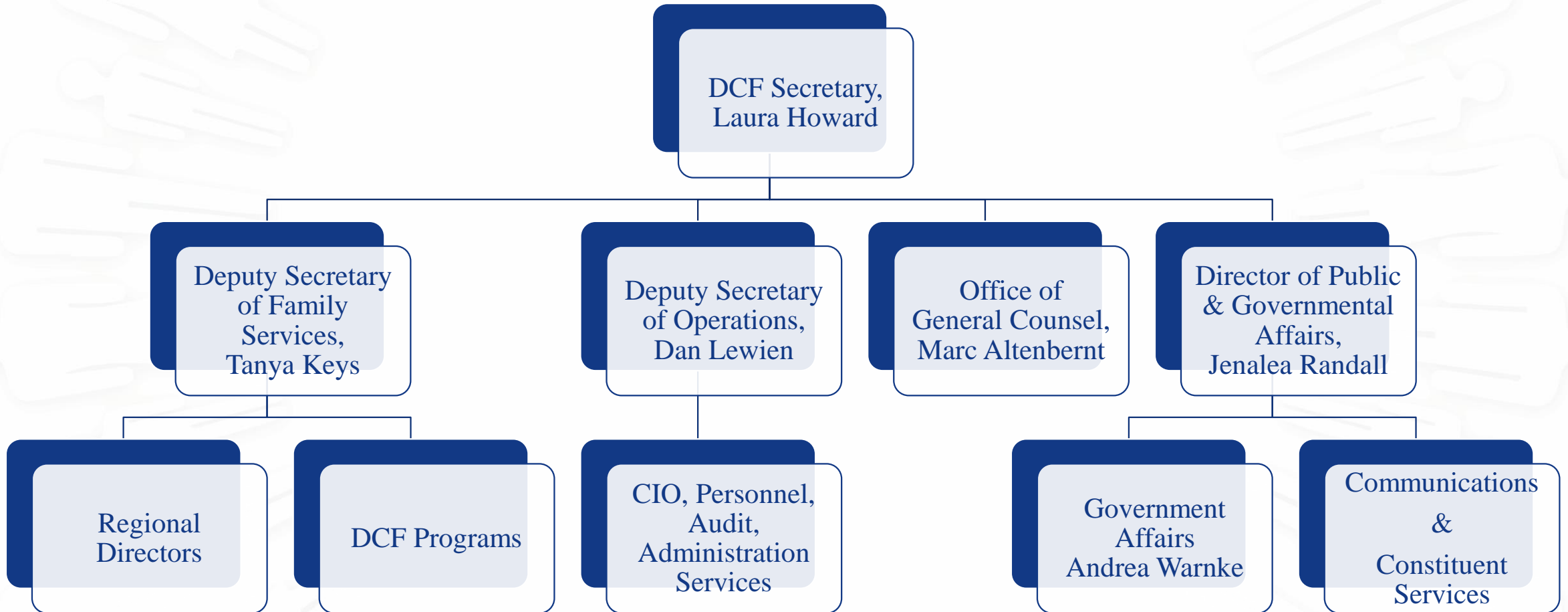
WE VALUE COMMUNITIES AND THE PEOPLE THAT MAKE THEM UNIQUE:

 - We honor the whole person
 - We rely on each other
 - We are partners, not competitors
 - We all benefit from a collective impact approach
 - Communities bring strength through relationships and resources
- 

WE LEAD WITH AUTHENTICITY, CURIOSITY, AND RESPECT:

 - We are innovative
 - We are inclusive
 - We are experts
 - We are leaders
 - We are authentic
 - We are diverse
 - We care about each other, our work and the people we serve
 - We share success stories

DCF ADMINISTRATION



PUBLIC & GOVERNMENTAL AFFAIRS



JENALEA RANDALL

Director of Public &
Governmental Affairs

(785) 296-8467

Jenalea.Randall@ks.gov



ANDREA WARNKE

Deputy Director of
Government Affairs

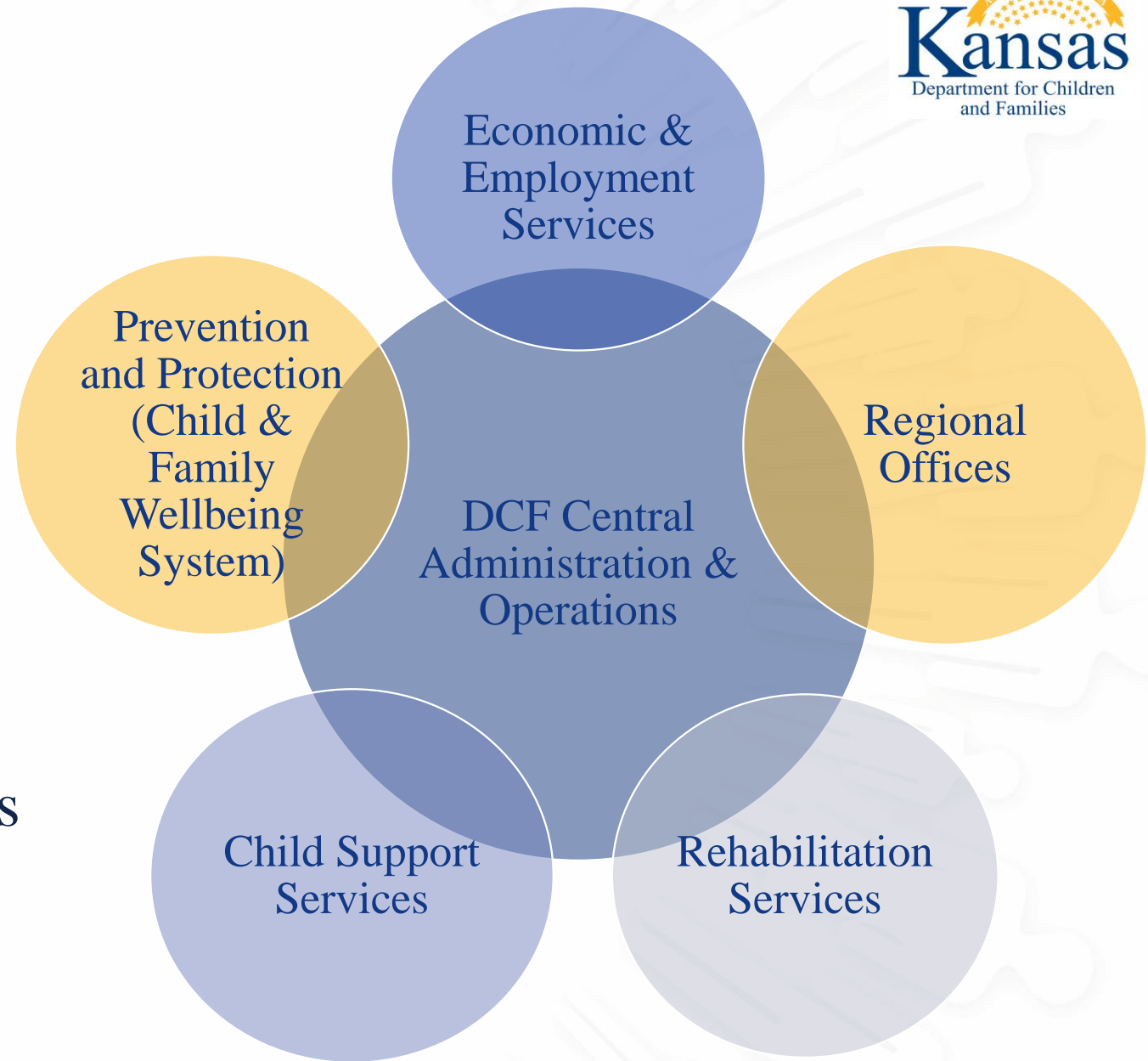
(785) 213-1140

Andrea.Warnke@ks.gov

ORGANIZATION

DCF Major Programs

- Programs collaborate for family and individual outcome achievement
- Programs are supported by core operations.
- Program and practice are carried out by teams in 36 service centers across 6 Regional Offices



PREVENTION & PROTECTION SERVICES



Director of Prevention – Jennifer Bretsnyder

Director of Permanency – Rebecca Gerhardt

Director of Practice Model & Performance Improvement – Deanne Dinkel

Director of Children's Mental Health & Medicaid – Brenda Soto

PPS helps families and vulnerable adults by providing:

- Protection services (PRC and investigations)
- Family-based assessments
- Family support services
- Family preservation
- Families first prevention services
- Foster care
- Adoption services
- Independent living services for older youth
- Licensing foster homes



Kansas Protection Report Center
1-800-922-5330

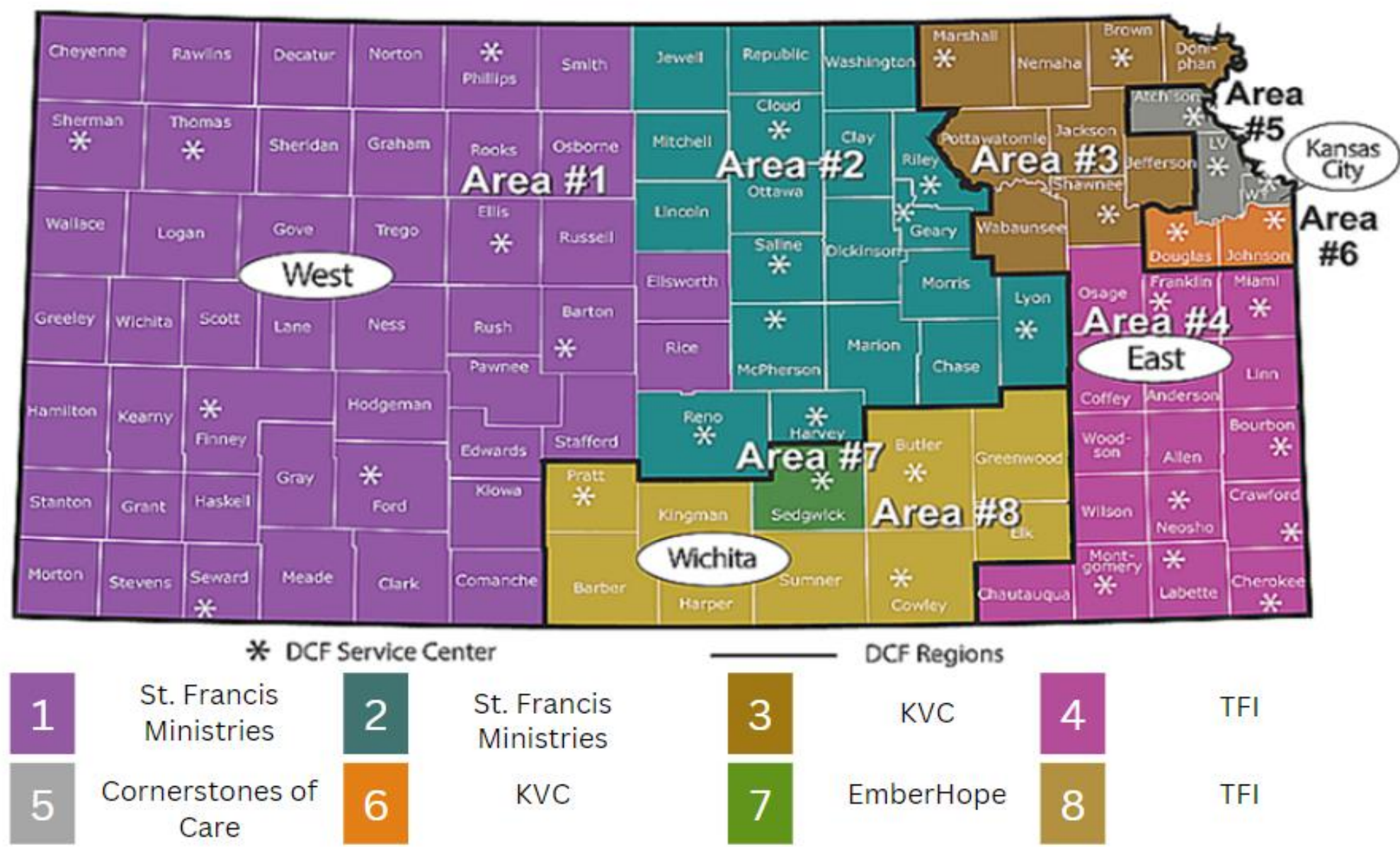
DCF Caseload Summary



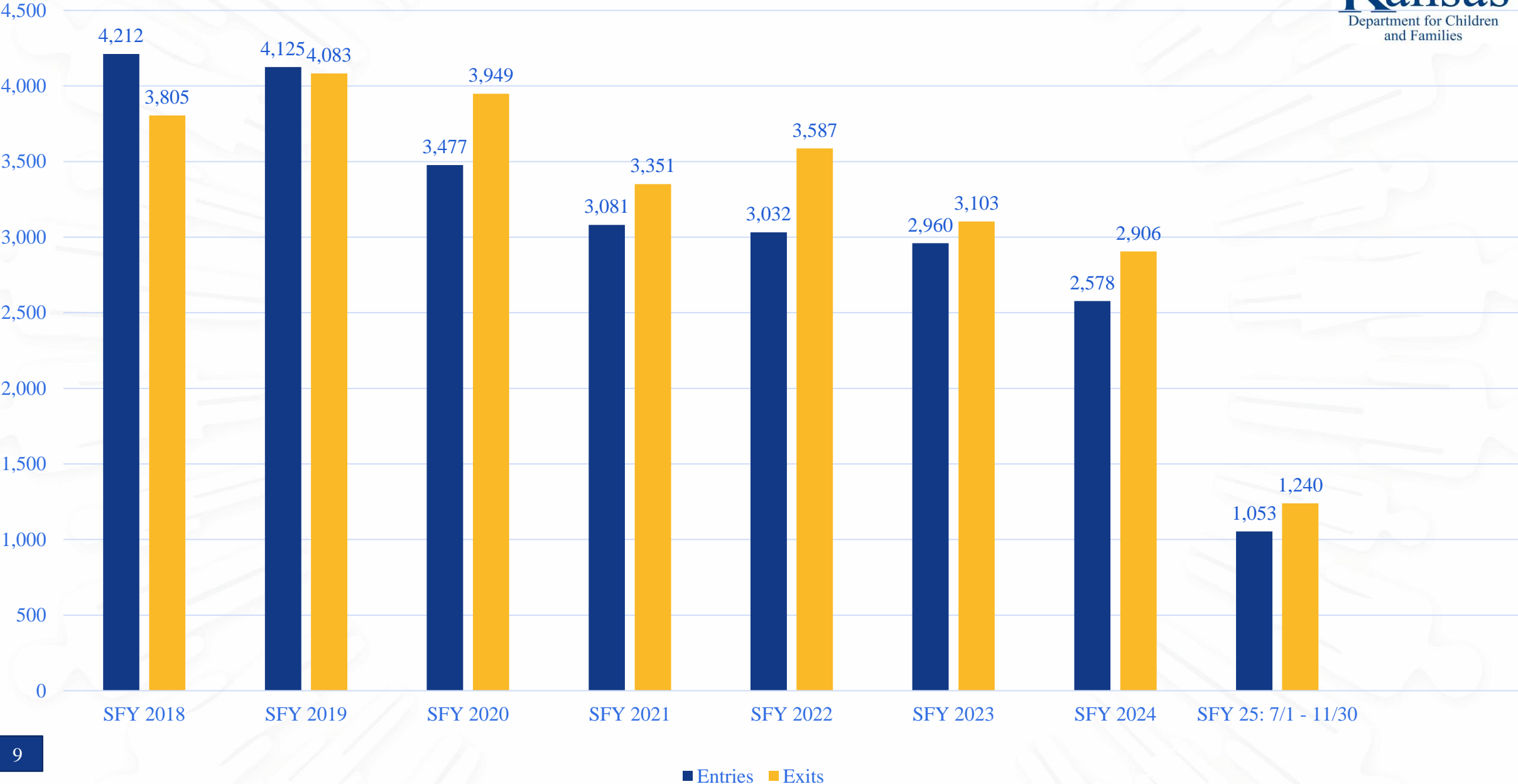
Program	FY 2023 Actual	FY 2024 Actual
Prevention and Protection Services		
Child Protective Services Investigations	26,427	24,811
Family Services Assistance	\$2,445,901	\$2,141,475
Family Preservation Families Referred Assistance	1,478	1,515
Families First Assistance	\$9,344,453	\$9,820,408
Families First Assistance	\$14,960,432	\$17,099,353
Adult Protective Services Investigations Assistance	11,834	10,608
Adult Protective Services Investigations Assistance	\$543,432	\$749,088
Reintegration/Foster Care Average monthly children Assistance	6,189	5,923
Reintegration/Foster Care Average monthly children Assistance	\$290,055,651	\$299,126,603
Adoption Support Average monthly children Assistance	8,805	8,910
Adoption Support Average monthly children Assistance	\$50,087,218	\$51,993,661
SOUL Permanency Average monthly youth Assistance	--	--
SOUL Permanency Average monthly youth Assistance	--	--
Permanent Custodianship Average monthly youth Assistance	108	83
Permanent Custodianship Average monthly youth Assistance	\$388,488	\$303,084
Independent Living Persons Assistance	929	928
Independent Living Persons Assistance	\$4,466,971	\$4,312,748

FOSTER CARE CASE MANAGEMENT PROVIDERS

FOSTER CARE CONTRACT EFFECTIVE 7/1/24



CHILDREN ENTERING & EXITING FOSTER CARE ACROSS YEARS



SUCCESS STORIES

FAMILY FIRST PREVENTION SERVICES ACT



- Significant impact on reducing the need to bring children into the custody of the Secretary.
- The program provides grants to agencies providing services in:
 - Mental Health
 - Parent Skill Building
 - Kinship Navigation
 - Substance Use Disorders
- A chief measure of the program's success is the percent of children remaining at home after 12 months of referral. Initial data shows that overall, 89% of children and youth who have reached 12 months from the time of referral have remained at home. The program goal is 90%. The rates for two categories, kinship navigation and mental health, were 100% and 90%, respectively.

SUCCESS STORIES



SUPPORT – OPPORTUNITY – UNITY – LEGAL RELATIONSHIPS

SOUL Family Legal Permanency allows teens in foster care, ages 16-18, to establish legal caregiving relationships with one or more adults (called SOUL Family Legal custodians) while still maintaining existing family connections and access to important benefits to support their transition into adulthood.

Since the effective date on July 1st, there have been multiple SOUL Family Legal Permanencies finalized in the state of Kansas.

These youth achieved permanency through SOUL with the help and advocacy of their case team and Guardian Ad Litem.

CHILD SUPPORT SERVICES



Director of Child Support Services – Marcie Martinez

Child Support Services helps children receive the financial support necessary for their growth and development. The program assists by:

- Establishing parentage and orders for child support
- Locating non-custodial parents
- Enforcing child support orders
- Modifying support orders, as needed



Child Support Service Center
1-888-757-2445
7 a.m. to 6 p.m., Monday - Friday

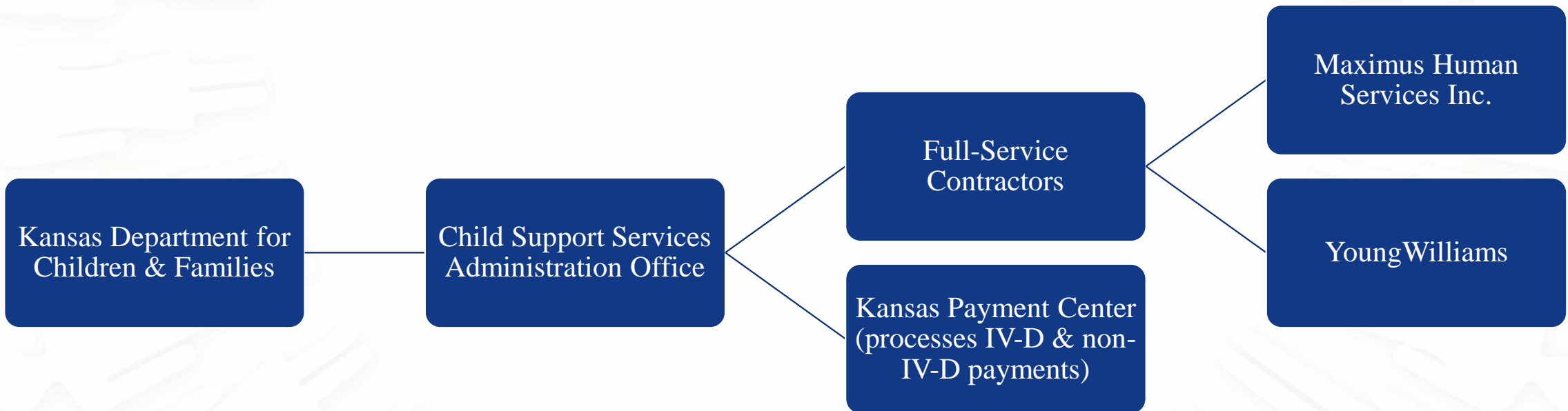
Program		FY 2023 Actual	FY 2024 Actual
Child Support Services			
Child Support Collections	Average monthly cases	129,648	122,620
	Annual Collections	\$200,869,141	\$195,548,063

SUCCESS STORIES

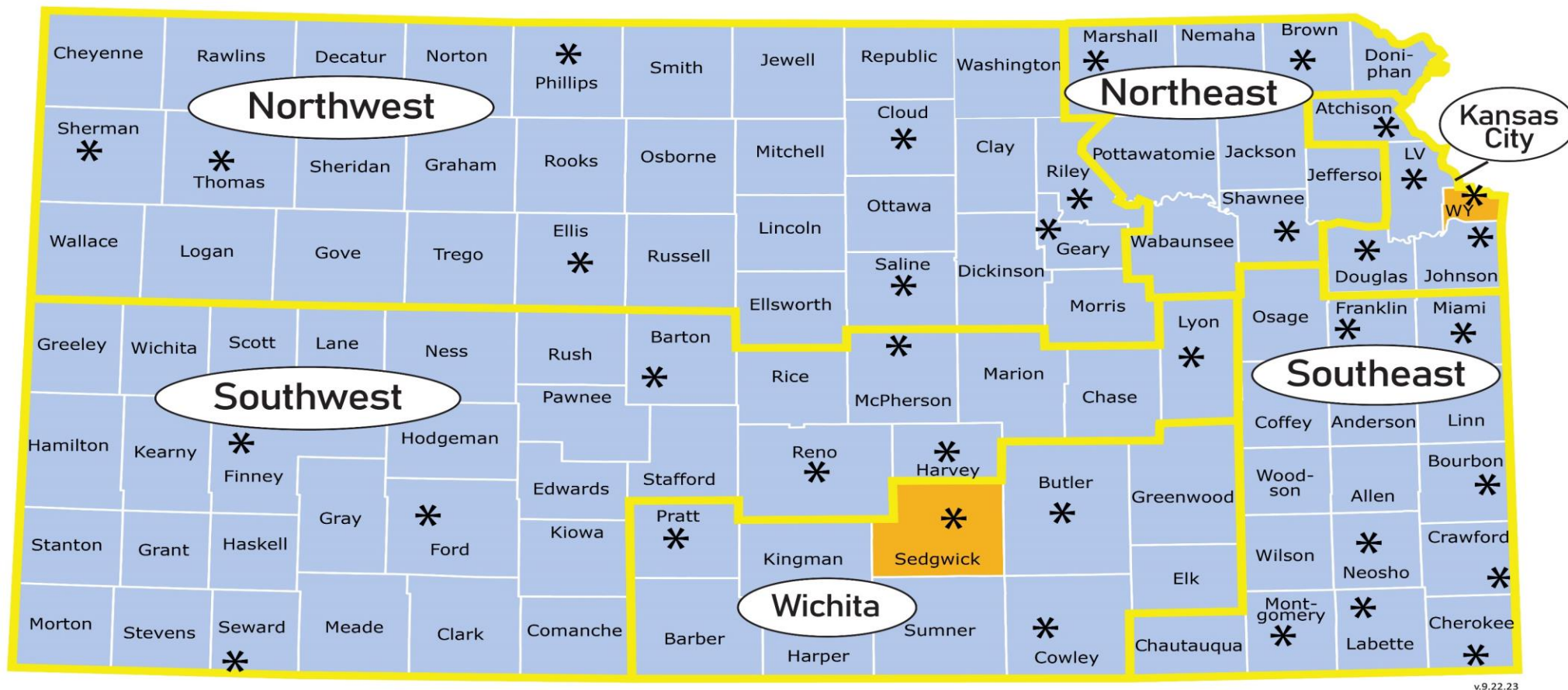
CHILD SUPPORT CONTRACTORS

In Fall 2021 Kansas moved to a two full-service contractors and eliminated a separate client contact center in an effort to simplify IV-D services for Kansans.

All payments and disbursements continue to go through the Kansas Payment Center (KPC).



Child Support Services Contracts



Maximus Human Services Inc.

* DCF Service Center



YoungWilliams



Toll free number for Case Inquiries: 888.757.2445

ECONOMIC & EMPLOYMENT SERVICES



Director of Economic & Employment services – Dr. Carla Whiteside-Hicks

Economic and Employment Services (EES) provides a variety of programs that can help families achieve self-sufficiency. These include:

- Cash assistance (Temporary Assistance for Needy Families)
- Food assistance (Supplemental Nutrition Assistance Program)
- Childcare assistance
- Employment assistance
- Energy assistance
- Emergency Water Assistance Program

DCF Customer Service

1-800-369-4777



Kansas Benefits Card Support

1-800-831-5235

DCF EES Caseload Summary



Program		FY 2023 Actual	FY 2024 Actual
Economic and Employment Services			
TANF Cash Assistance	Average monthly persons	6,822	7,229
	Assistance	\$9,361,462	\$9,735,584
TANF Employment Services	Average monthly adults	1,872	2,085
	Assistance	\$2,178,691	\$1,401,874
Low Income	Persons	52,422	85,727
Energy Assistance	Assistance	\$28,587,469	\$59,153,502
Summer EBT Assistance	Persons	--	--
	Assistance	--	--
SNAP (Food Assistance)	Average monthly persons	190,279	188,710
	Assistance	\$552,357,723	\$412,518,964
SNAP Employment and Training	Average monthly adults	1,137	1,580
	Assistance	\$545,214	\$288,809
Child Care Assistance	Average monthly children	12,481	13,293
	Assistance	\$74,096,431	\$84,751,747
Kansas Early Head Start	Children	979	955
	Assistance	\$11,620,535	\$12,075,828

SUCCESS STORIES

DCF WORK PROGRAMS



TANF Employment Services. TANF cash assistance adults who are required to engage in work programs must participate 20-30 hours per week in order to continue receiving assistance. There were 939 new employments from July 2023 to June 2024.

Generating Opportunities to Attain Lifelong Success (GOALS) . Goals is a voluntary program for adults in families who are receiving food assistance but not TANF cash assistance. The program piloted in 2016 - 2018 and was implemented statewide in 2019. There were 97 new employments from July 2023 to May 2024. The GOALS program ended 06/30/2024.

Food Assistance Employment & Training (FAE&T) or SNAP E&T. Able bodied adults without dependents are required to work with FAE&T to meet employment goals and continue to receive SNAP. There were 199 new employments from July 2023 to June 2024.

Vocational Rehabilitation (VR). Available to individuals with a physical or mental impairment that results in a substantial impediment to employment and who require and can benefit from VR services to achieve employment. The program assists clients in finding competitive integrated employment and achieving self-sufficiency. In SFY 2024 - 970 Achieved competitive employment.

Pre-Employment Transition Services (Pre-ETS). Empowers youth with disabilities to achieve their highest employment potential through job exploration, counseling on postsecondary education options, self advocacy training, and work-related learning experience.

REHABILITATION SERVICES

Director of Rehabilitation Services – Dan Decker

Rehabilitation Services offers a variety of programs to meet the diverse needs of Kansans with disabilities, including:

- Vocational services
- Independent living
- Services for older Kansans who are blind or visually impaired
- Disability determination services on behalf of the Social Security Administration

Vocational Rehab Caseloads

- 7,238 Kansas with disabilities
 - 6,335 Average monthly persons
 - 970 Achieved competitive employment.

Disability Determination Services Case loads

- 26,985 Disability Claims processed in FY 24
 - 98.9% Accuracy Rate
 - Assistance paid \$6,833,034



Rehabilitation Customer Service Center
1-866-213-9079

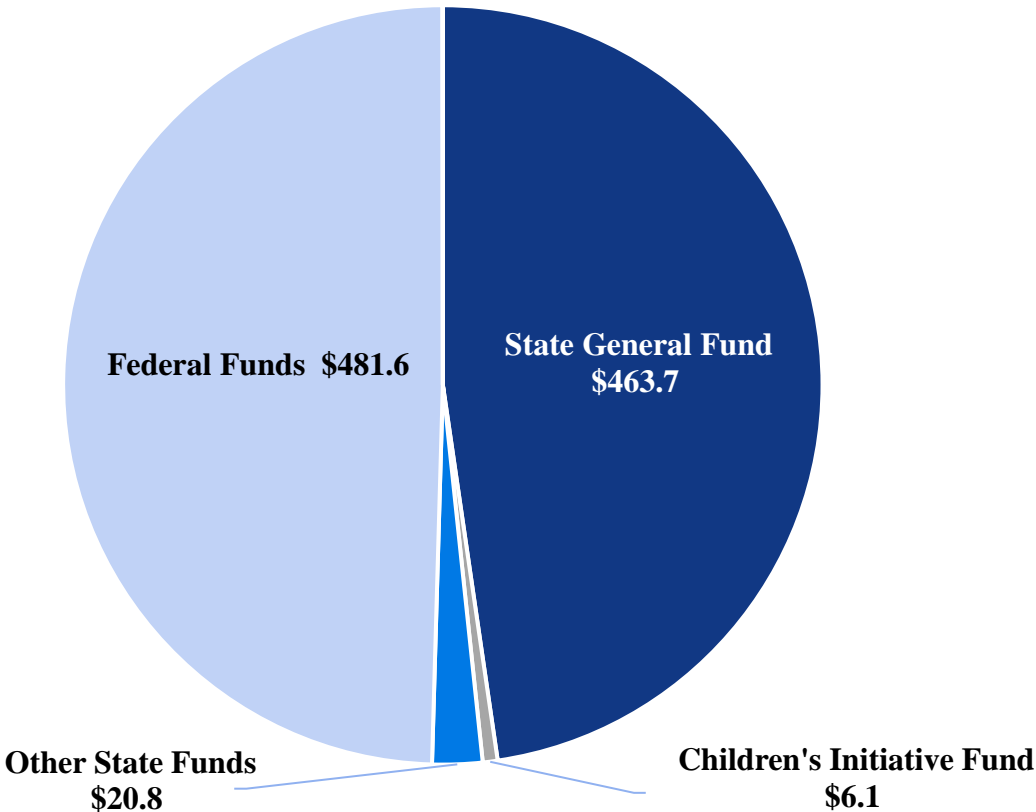
FY 2025 APPROVED BUDGET (MILLIONS)

Total Budget

FY 2025
\$972.3

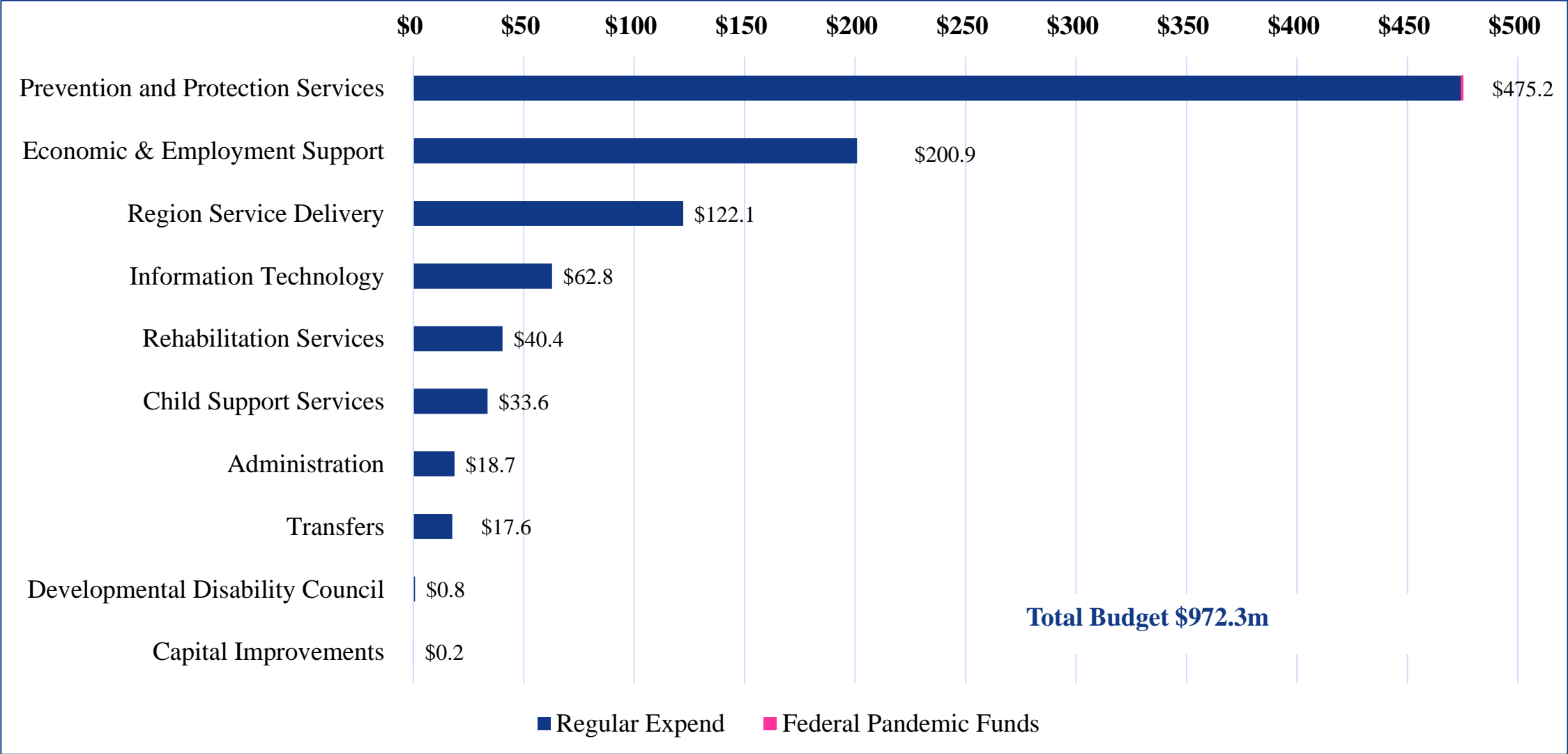
Funding Sources

State General Fund	\$463.7
Children's Initiative Fund	\$6.1
Other State Funds	\$20.8
Federal Funds	\$481.6
Enterprise Funds	\$0.1
Total Funding	\$972.3



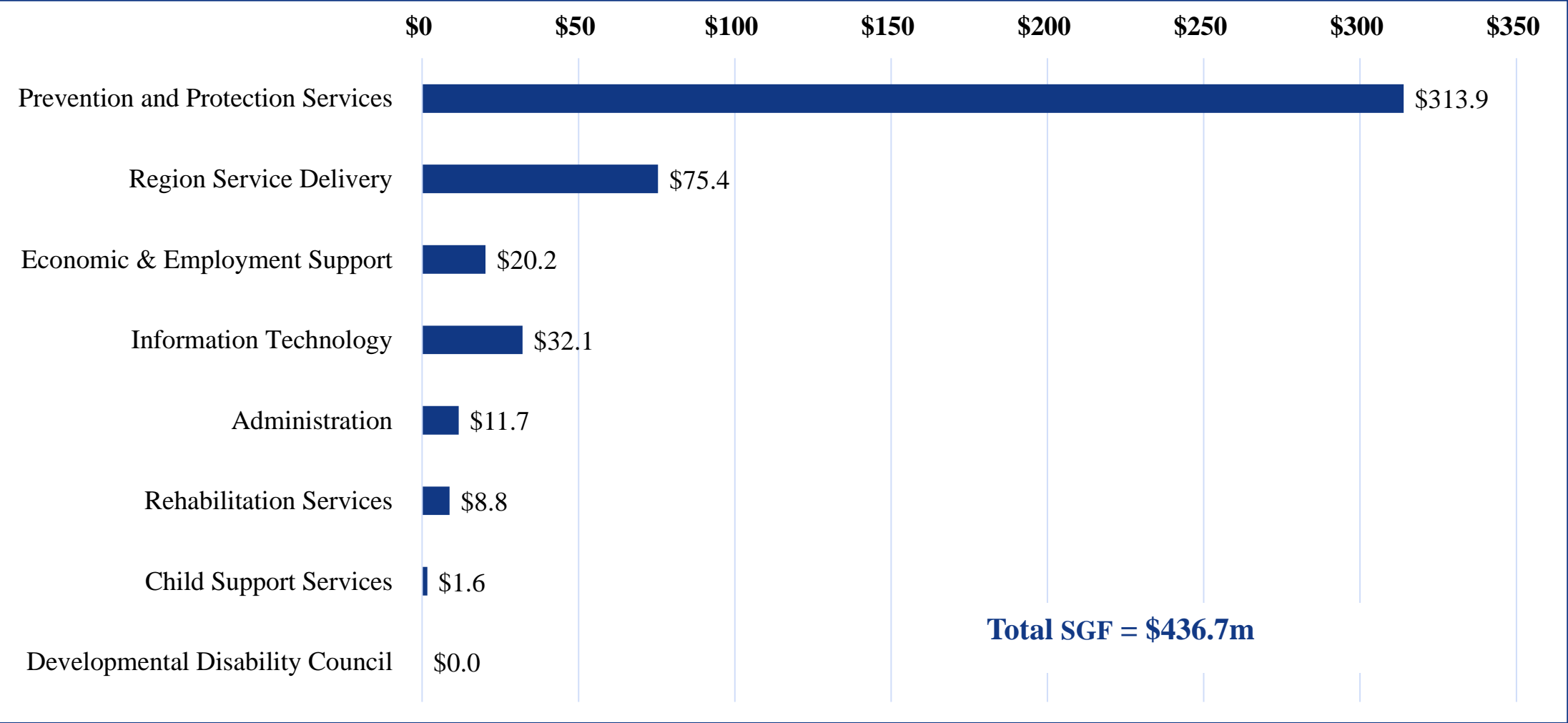
FY 2025 APPROVED BUDGET BY PROGRAM

(MILLIONS)



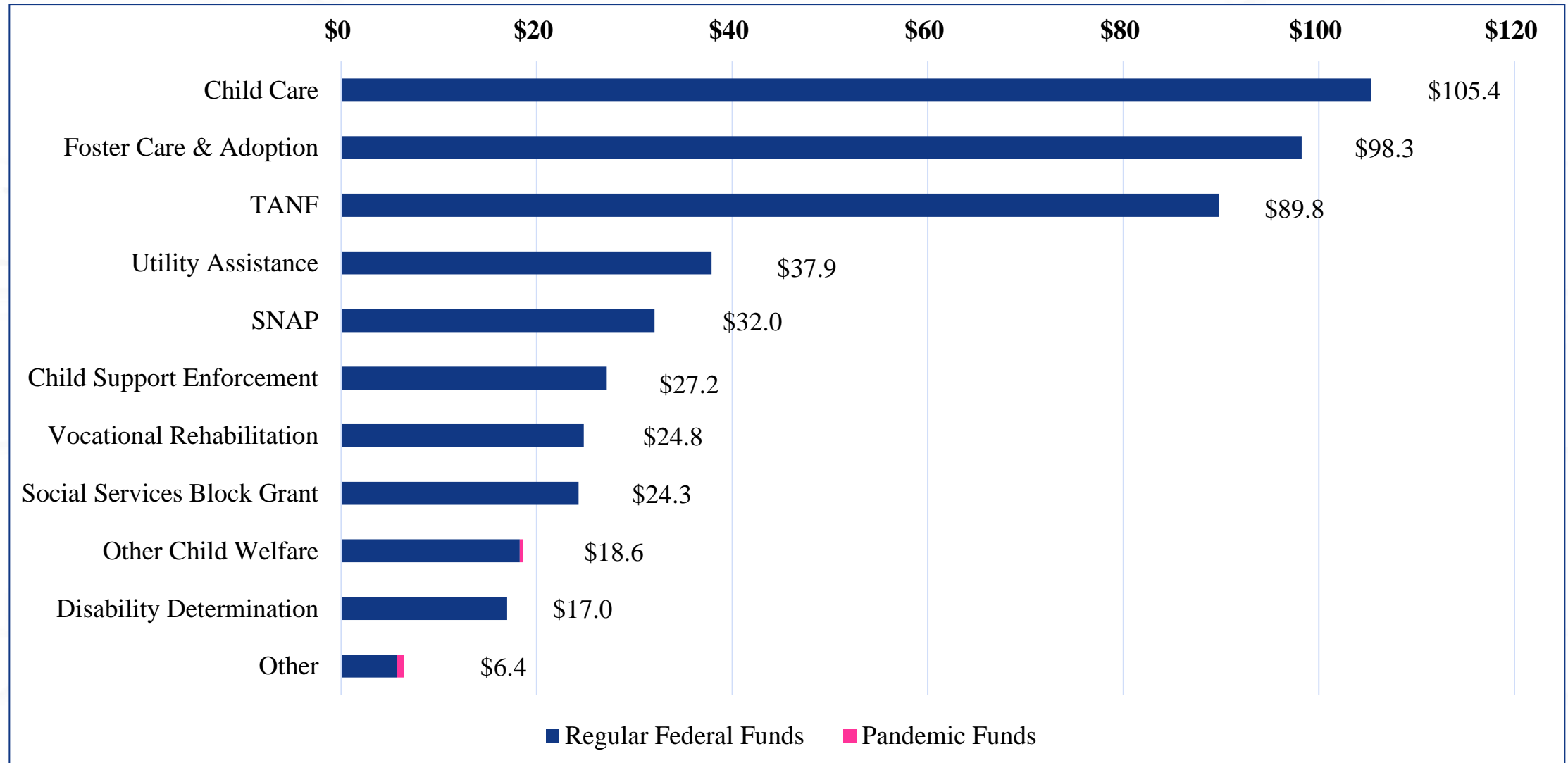
FY 2025 APPROVED SGF BY PROGRAM

(MILLIONS)



FY 2025 APPROVED FEDERAL FUNDS

(MILLIONS)



2025 LEGISLATIVE INITIATIVES



DCF has selected three priorities that we hope to work with you all on during the 2025 Legislative Session:

SECURE CARE PLACEMENTS:

Reducing the number of days a child in the custody of the secretary can be authorized for secure care placement by a court from 60 to 45 days.

PERMANENCY HEARINGS WITHIN NINE MONTHS:

Reducing the number of months within which courts must hold a CINC permanency hearing from 12 to 9 months.

NEGLECT DEFINITION:

Distinguish in statute that poverty is not neglect and prevent separation of a child from a parent solely due to poverty.

2025 LEGISLATIVE REPORTS



DCF turns in several statutorily required reports each legislative session including:

- The Juvenile Crisis Intervention Center report
 - K.S.A 65-536 sets forth the Secretary for DCF provide an annual report of specific information regarding outcomes of juveniles admitted into intervention centers to the Joint Committee on Corrections & Juvenile Justice, Senate Judiciary and the House Corrections & Juvenile Justice Committees.
 - This report has been submitted
- The Kansas Foster Care Annual Academic Report Card
 - Per statute, the Kansas Department of Education and the Department for Children and Families are required to collaborate and prepare the Kansas Foster Care Annual Academic Report Card to the Senate and House Education Committees.
 - This report is still being finalized.

QUESTIONS?
