

# DEPARTMENT FOR CHILDREN & FAMILIES OVERVIEW

---

HOUSE SOCIAL SERVICES BUDGET COMMITTEE  
SECRETARY LAURA HOWARD | 1.25.23

# DCF MISSION STATEMENT



TO PROTECT CHILDREN, STRENGTHEN FAMILIES, AND PROMOTE ADULT SELF-SUFFICIENCY.



## OUR MISSION:

To protect children, strengthen families and promote adult self-sufficiency.

## WHAT WE BELIEVE:



### PEOPLE HAVE THE CAPACITY:

- To progress
- To succeed
- To grow
- To do well in life



### PEOPLE ARE THE EXPERTS ON THEIR LIVES AND HAVE:

- Voices
- Choices
- Needs
- Strengths
- Life Stories



### WE VALUE COMMUNITIES AND THE PEOPLE THAT MAKE THEM UNIQUE:

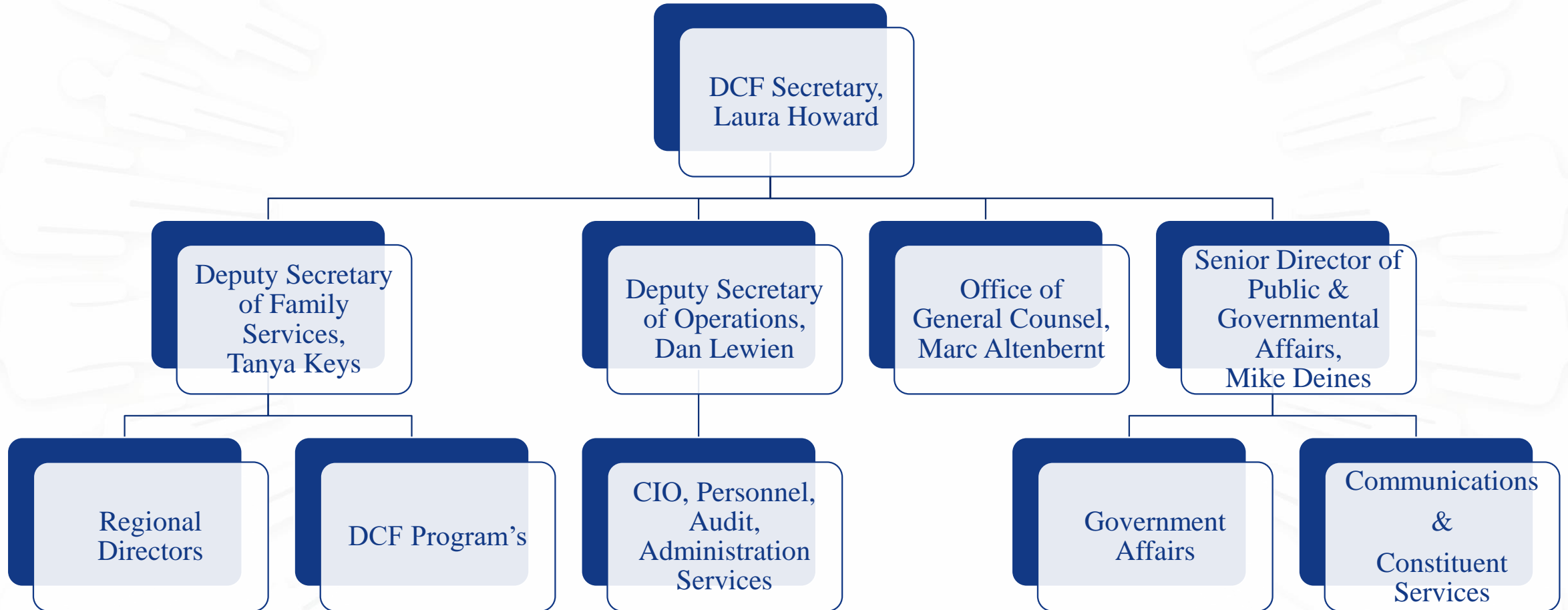
- We honor the whole person
- We rely on each other
- We are partners, not competitors
- We all benefit from a collective impact approach
- Communities bring strength through relationships and resources



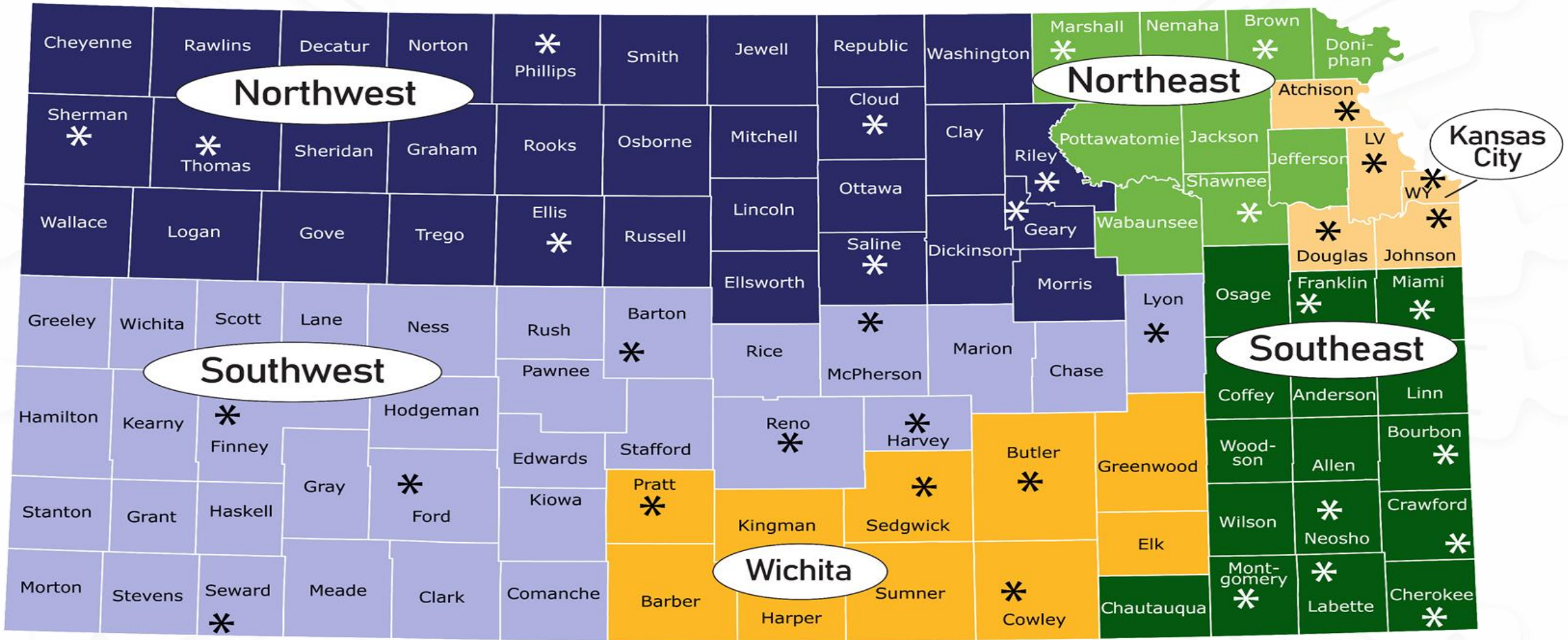
### WE LEAD WITH AUTHENTICITY, CURIOSITY, AND RESPECT:

- We are innovative
- We are inclusive
- We are experts
- We are leaders
- We are authentic
- We are diverse
- We care about each other, our work and the people we serve
- We share success stories

# DCF ADMINISTRATION



# DCF Regions

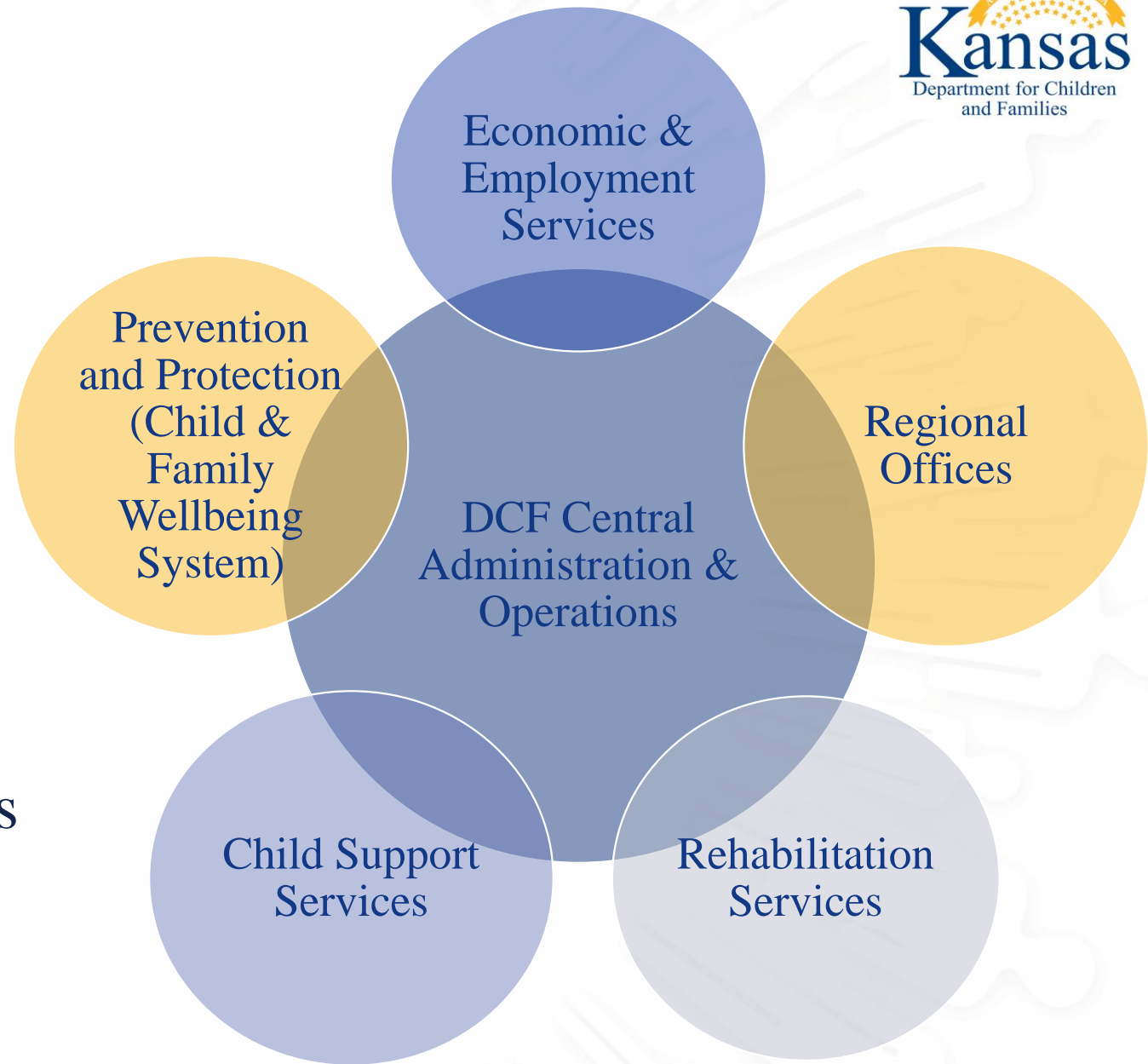


\* DCF Service Center

# ORGANIZATION

## DCF Major Programs

- Programs collaborate for family and individual outcome achievement
- Programs are supported by core operations.
- Program and practice are carried out by teams in 36 service centers across 6 Regional Offices



# PREVENTION & PROTECTION SERVICES



Director of Prevention / Safety & Protection – Pam Hahn

Director of Permanency – Scott Henricks

Director of Program Implementation & Quality Assurance – Deanne Dinkel

PPS helps families and vulnerable adults by providing:

- Protection services (PRC and investigations)
- Family-based assessments
- Family support services
- Family preservation
- Families first prevention services
- Foster care
- Adoption services
- Independent living services for older youth
- Licensing foster homes

Kansas Protection Report Center



1-800-922-5330

# SUCCESS STORIES

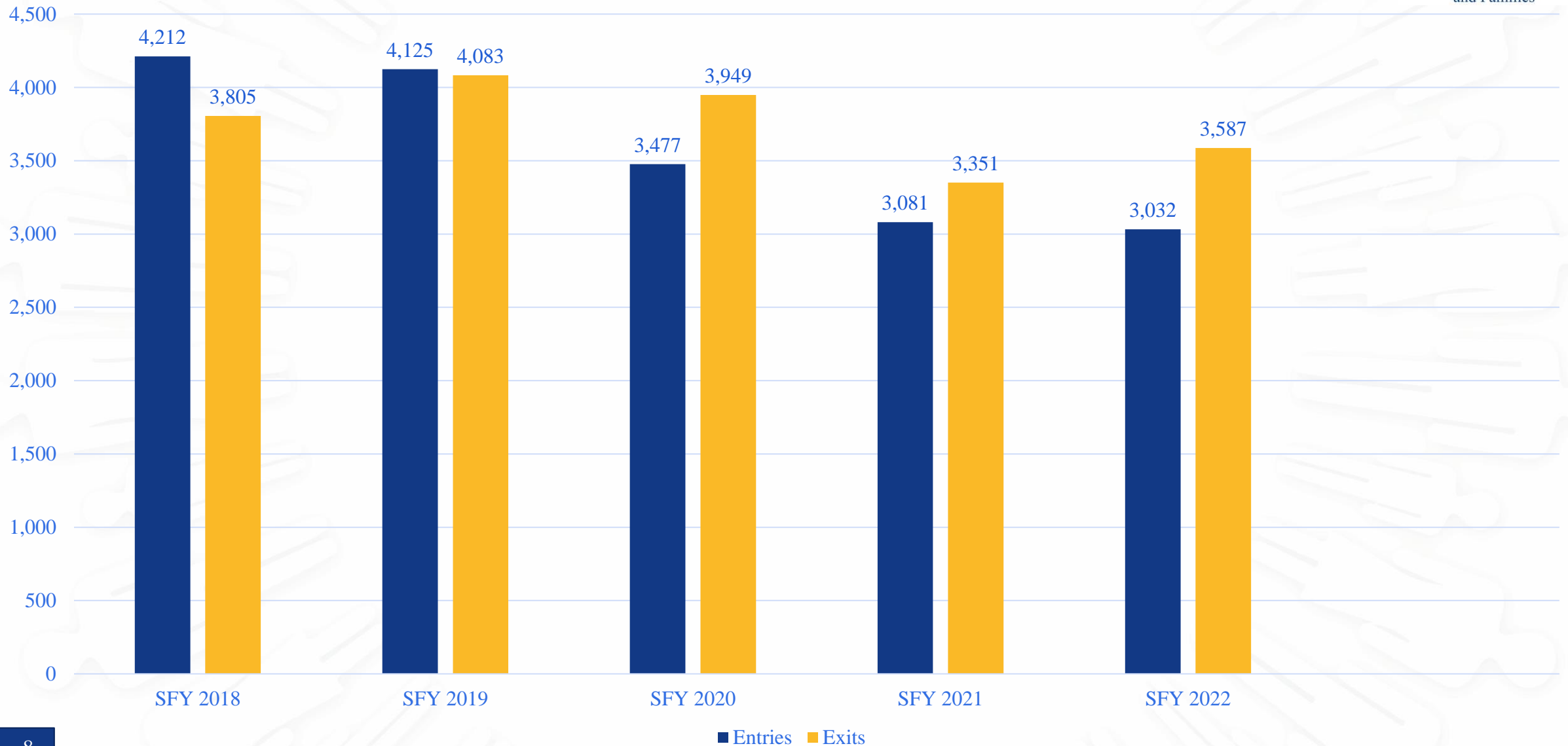
## KANSAS PRACTICE MODEL



Provides a consistent and customized framework to support engagement, safety planning, and decision making to guide our work alongside families, children, and youth.

- Foundation of the Kansas Practice Model:
  - Team Decision Making
  - Family Finding
  - Signs of Safety
  - Structured Decision Making
  - Solution Focused Questions
  - Resolutions Approach
- As a result of this work, we are seeing a dramatic drop in the need for foster care:
  - The state currently has 6,248 youth and children in care, down from 7,600 at the beginning of the Kelly administration.
  - In FY 2020, there were 15 percent fewer children entering foster care than in FY 2019.
  - In FY 2021, there were 11 percent fewer than in FY 2020.
  - In FY 2022, there were 2 percent fewer than in FY 2021.

## Children Entering & Exiting Foster Care Across Years





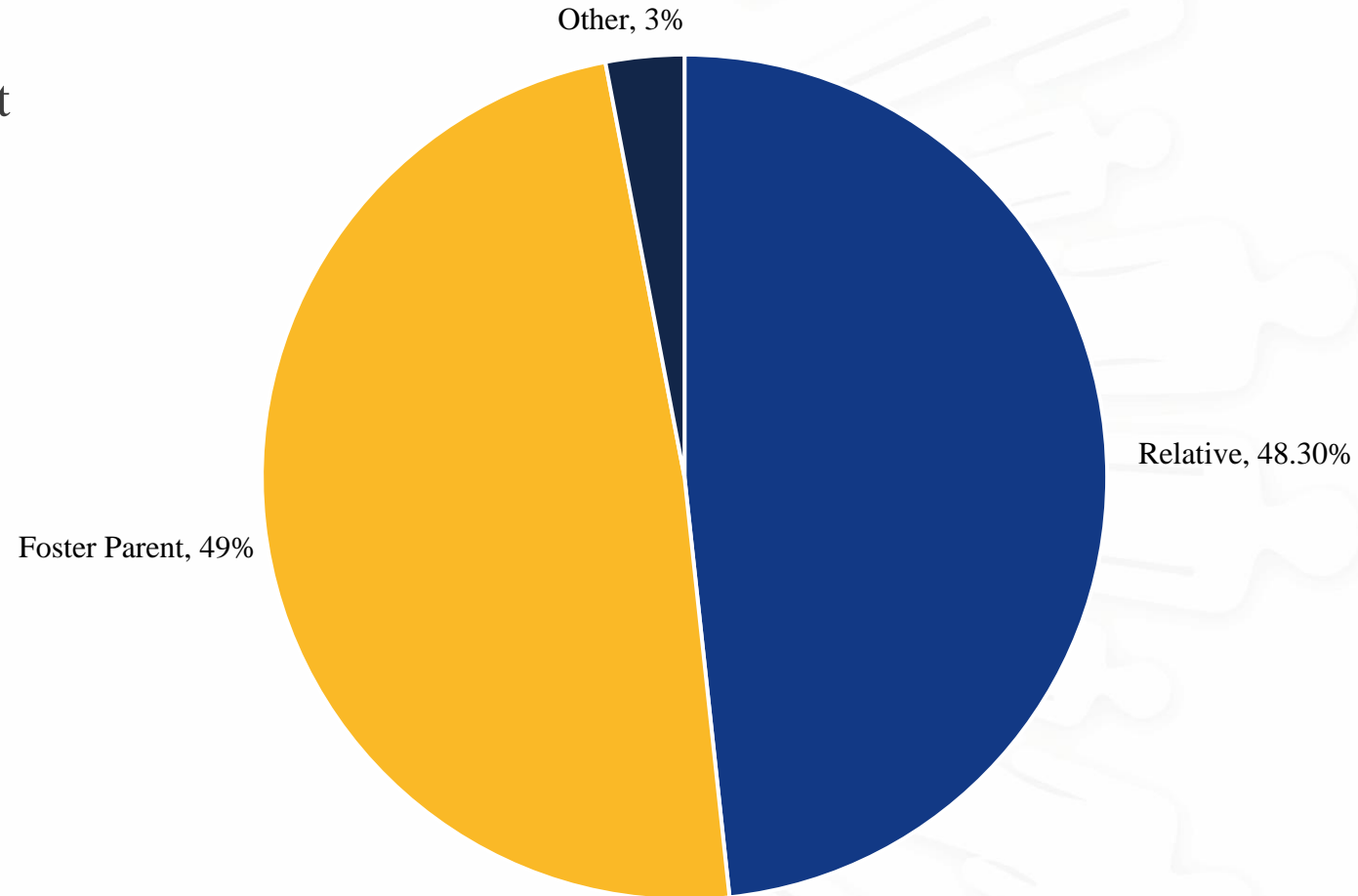
# SUCCESS STORIES

## FINALIZED ADOPTIONS

Adoptions increased in SFY2019 averaging just over 1,000 annually the past 4 years.

- The average age of a child at the time of the finalized adoption is 7 years with two-thirds of children adopted age 8 or younger (65%).
- The average length of time in care is 39 months and over half of children (59%) are adopted as part of a sibling group. \

In SFY 22, Nearly all 948 adoptions were finalized with a relative or foster parent and in SFY 22, 48.7 % were with a foster family and 48.3% were with a relative.



Adoptive Parent Relationship, SFY 2022

# SUCCESS STORIES

## FAMILY FIRST PREVENTION SERVICES ACT



- Significant impact on reducing the need to bring children into the custody of the Secretary.
  
- The program provides grants to agencies providing services in:
  - Mental Health
  - Parent Skill Building
  - Kinship Navigation
  - Substance Use Disorders
  
- A chief measure of the program's success is the percent of children remaining at home after 12 months of referral. Initial data shows that overall, 89% of children and youth who have reached 12 months from the time of referral have remained at home. The program goal is 90%. The rates for two categories, kinship navigation and mental health, were 100% and 90%, respectively.

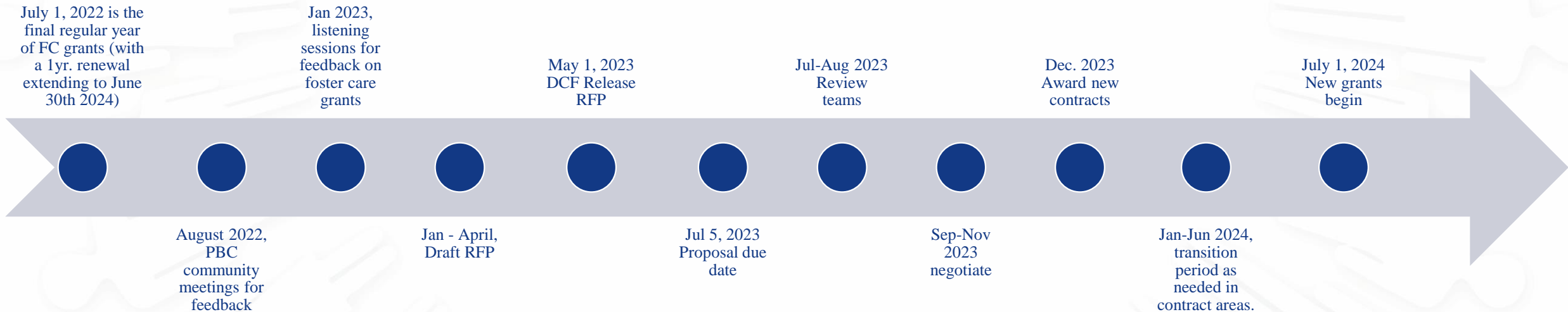
# STATUS UPDATE

## FOSTER CARE GRANTEE RE-BID PROCESS



DCF is currently engaging listening sessions for input into service components, quality assurance and other grant requirements

RFP releases May 2023 with award in Dec. 2023 for new grant start date of July 1, 2024.



# CHILD SUPPORT SERVICES

Director of Child Support Services – Marcie Martinez

Child Support Services helps children receive the financial support necessary for their growth and development. The program assists by:

- Establishing parentage and orders for child support
- Locating non-custodial parents
- Enforcing child support orders
- Modifying support orders, as needed



Child Support Service Center

1-888-757-2445

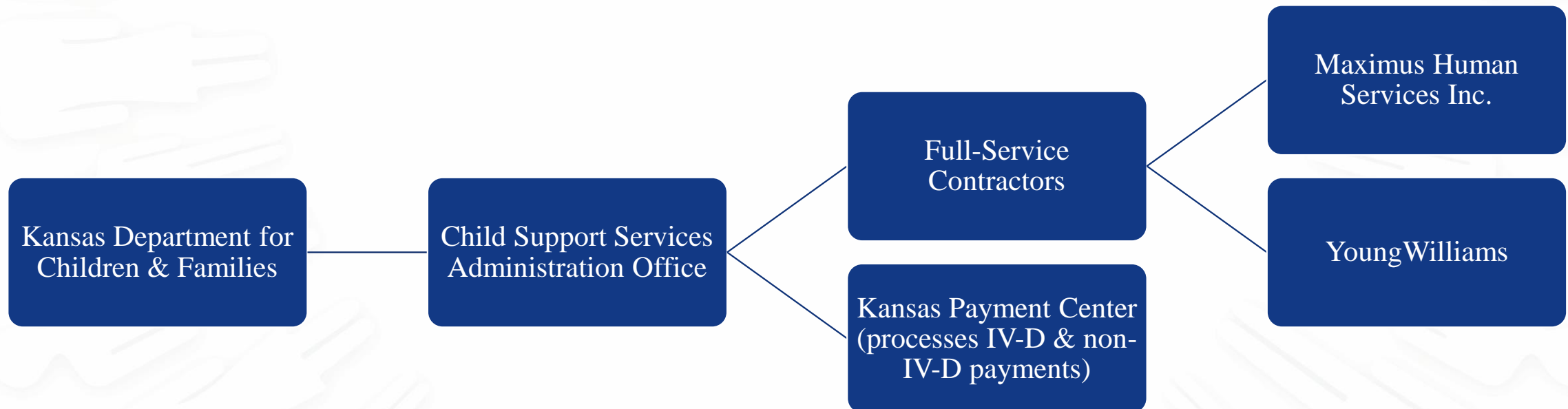
7 a.m. to 6 p.m., Monday - Friday

# SUCCESS STORIES

## CHILD SUPPORT CONTRACTORS

In Fall 2021 Kansas moved to a two full-service contractors and eliminated a separate client contact center in an effort to simplify IV-D services for Kansans.

All payments and disbursements continue to go through the Kansas Payment Center (KPC).



# ECONOMIC & EMPLOYMENT SERVICES



Director of Economic & Employment services – Sandra Kimmons

Economic and Employment Services (EES) provides a variety of programs that can help families achieve self-sufficiency. These include:

- Cash assistance (Temporary Assistance for Needy Families)
- Food assistance (Supplemental Nutrition Assistance Program)
- Childcare assistance
- Employment assistance
- Energy assistance
- Emergency Water Assistance Program

Kansas Benefits Card Support



1-800-831-5235

# SUCCESS STORIES

## DCF WORK PROGRAMS



**TANF Employment Services.** TANF cash assistance adults who are required to engage in work programs must participate 20-30 hours per week in order to continue receiving assistance. There were a total of 2848 new employments from July 2021 – June 2022

**Generating Opportunities to Attain Lifelong Success (GOALS) .** Goals is a voluntary program for adults in families who are receiving food assistance but not TANF cash assistance. The program piloted in 2016 - 2018 and was implemented statewide in 2019.

**Food Assistance Employment & Training (FAE&T) or SNAP E&T.** Able bodied adults without dependents are required to work with FAE&T to meet employment goals and continue to receive SNAP. There were a total of 353 new employments from 1/1/2022 to 8/31/2022.

**Vocational Rehabilitation (VR).** Available to individuals with a physical or mental impairment that results in a substantial impediment to employment and who require and can benefit from VR services to achieve employment. The program assists clients in finding competitive integrated employment and achieving self-sufficiency. In SFY 2022 1,113 Achieved competitive employment.

**Pre-Employment Transition Services (Pre-ETS).** Empowers youth with disabilities to achieve their highest employment potential through job exploration, counseling on postsecondary education options, self advocacy training, and work-related learning experience.

## NUMBERS SERVED in SFY 22

### SNAP

87,643  
children

110,647  
adults

### CHILD CARE

11,773  
children

1,777  
average HEROES  
children per month

### TANF

5,389  
children

1,974  
adults

## NEW EMPLOYMENTS

TANF  
2,848

GOALS  
548



# STATUS UPDATE

ABLE BODIED ADULT WITHOUT DEPENDENTS –  
2022 Sen. Sub. For H.B. 2448



Per 2022 Sen. Sub. For H.B. 2448, all Able-Bodied Adults without Dependents on the SNAP program must participate in SNAP Employment & Training as a condition of receiving food assistance if:

- The ABAWD client is aged 18 – 49; and
- The ABAWD client is not employed at least 30 hours a week.

The program went live on October 1<sup>st</sup>, 2022, after the USDA approved the State's plan. DCF has 15 career navigators for implementation and are collaborating with 5 community organizations for the program.

# REHABILITATION SERVICES

Director of Rehabilitation Services – Dan Decker

Rehabilitation Services offers a variety of programs to meet the diverse needs of Kansans with disabilities, including:

- Vocational services
- Independent living
- Services for older Kansans who are blind or visually impaired
- Disability determination services on behalf of the Social Security Administration

## Vocational Rehab

- 8,413 Kansas with disabilities
- 1,113 Achieved competitive employment.

## Disability Determination Services

- 18,254 Disability Claims
- 96.5% Accuracy Rate

Rehabilitation Customer Service Center



1-866-213-9079

# STATUS UPDATE

## COMPREHENSIVE CHILD WELFARE INFORMATION SYSTEM



- The new Comprehensive Child Welfare Information System (CCWIS) will modernize state child welfare systems and develop interfaces between the various agencies serving the Child Welfare and Adult Protectives Services programs.
- Currently, there are five legacy systems of varying ages and capabilities supporting child welfare programs. Major components of the existing systems use aging mainframe technology, unsupported operating systems, and obsolete programming languages. This makes the present systems difficult and costly to maintain, modify, or improve.
- Funding was added by the Legislature for FY 2021 to FY 2023 for the planning and design phase with the understanding that an estimated \$100 million would be needed for the development phase lasting 3 to 4 years.
- High Level Plan has been finalized by the Department of Administration for RFP issue.

# STATUS UPDATE

## COMPREHENSIVE CHILD WELFARE INFORMATION SYSTEM

### Design, Development and Integration RFP

- Seeks bidders who will lead the CCWIS effort alongside State resources to design, develop and implement the CCWIS system

### Quality Analysis RFP

- Seeks bidders who will provide quality analysis services of project deliverable from the DDI vendor, such as the validation of system functionality delivered compared to the system requirements provided by the State

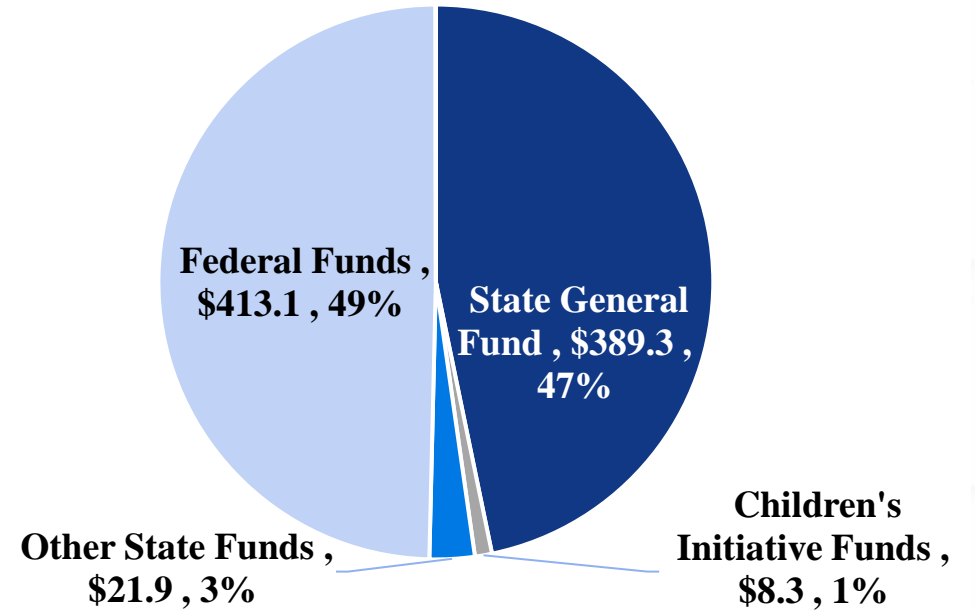
### Independent Verification and Validation RFP -

- Seeks bidders providing services for Independent Verification and Validation on the project. The IV&V vendor will review overall project performance such as adherence to project schedule and scope and provide analysis and feedback based on regularly scheduled interviews with Project team members, leaders and vendors

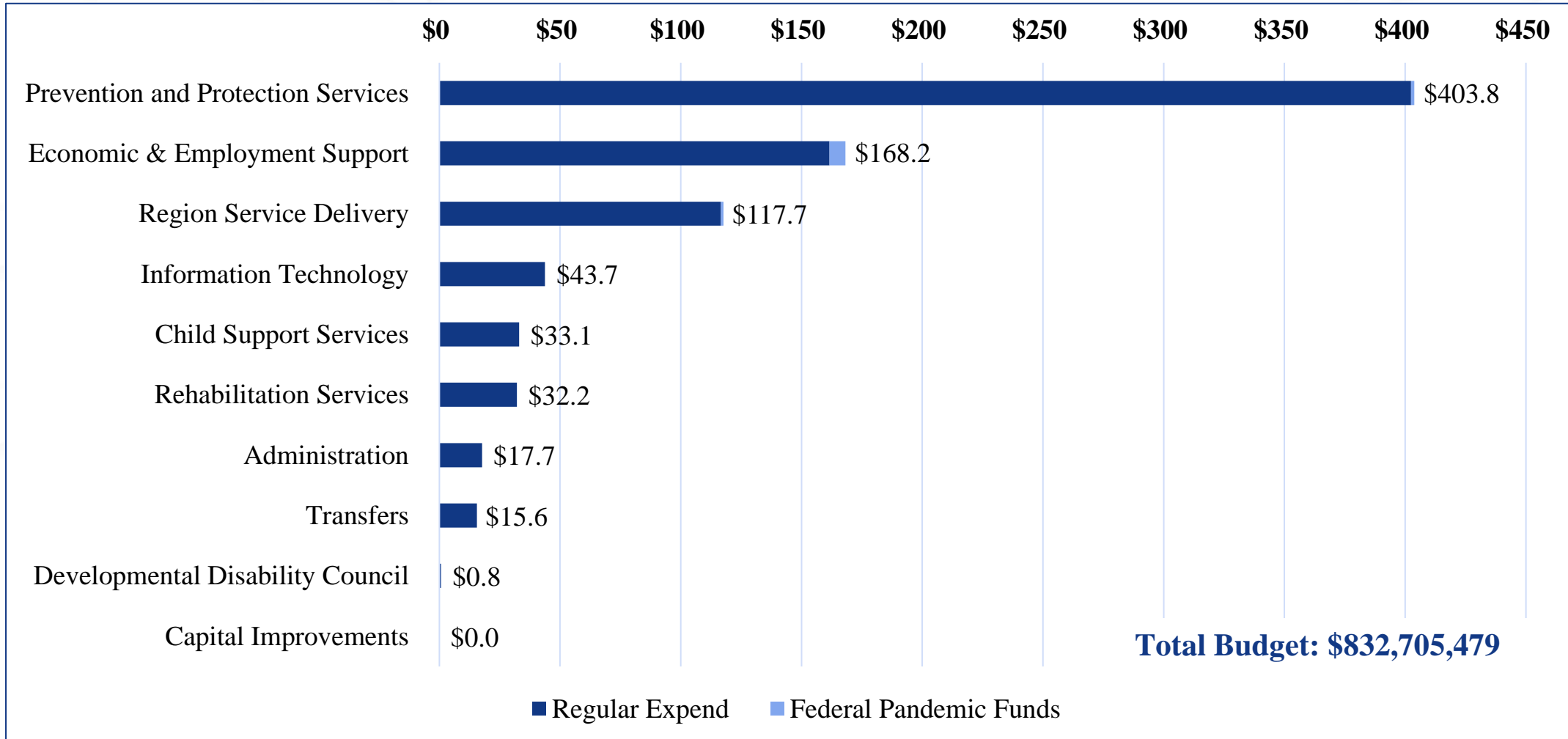
# FY 2024 AF BUDGET SUMMARY (MILLIONS)



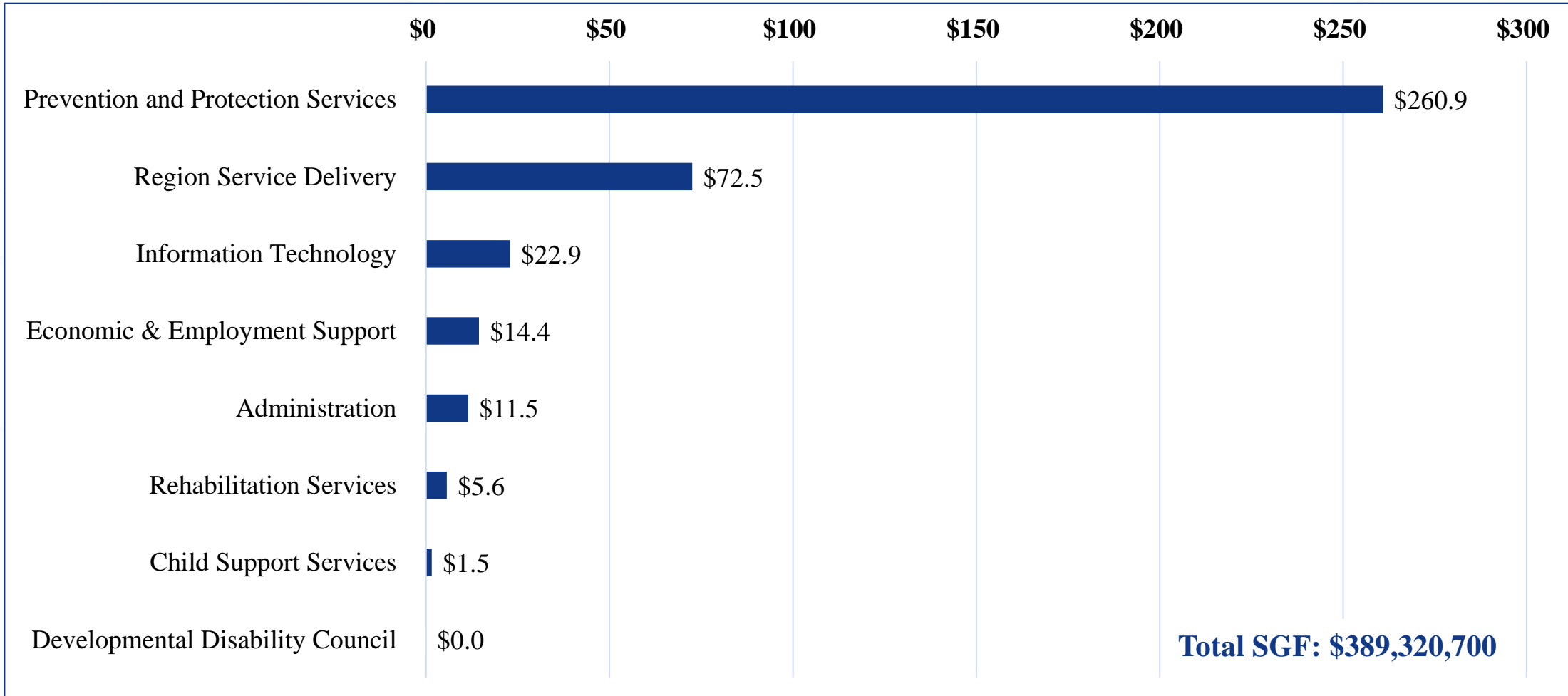
	<b>FY 2023</b>	<b>FY 2024</b>	<b>Change</b>
<b>Total Budget</b>	\$1,010.9	\$832.7	(\$178.2)
<b>Positions</b>	2,682.9	2,642.7	(40.3)
<b>Funding Sources</b>			
State General Fund	\$394.3	\$389.3	(\$4.9)
Children's Initiative Funds	\$8.3	\$8.3	\$0.0
Other State Funds	\$24.6	\$21.9	(\$2.7)
Federal Funds	\$583.7	\$413.1	(\$170.6)
Enterprise Funds	\$0.1	\$0.1	(\$0.0)
<b>Total Funding</b>	<b>\$1,010.9</b>	<b>\$832.7</b>	<b>(\$178.2)</b>
<b>Federal Pandemic Funds</b>	<b>\$169.0</b>	<b>\$9.1</b>	<b>(\$159.9)</b>



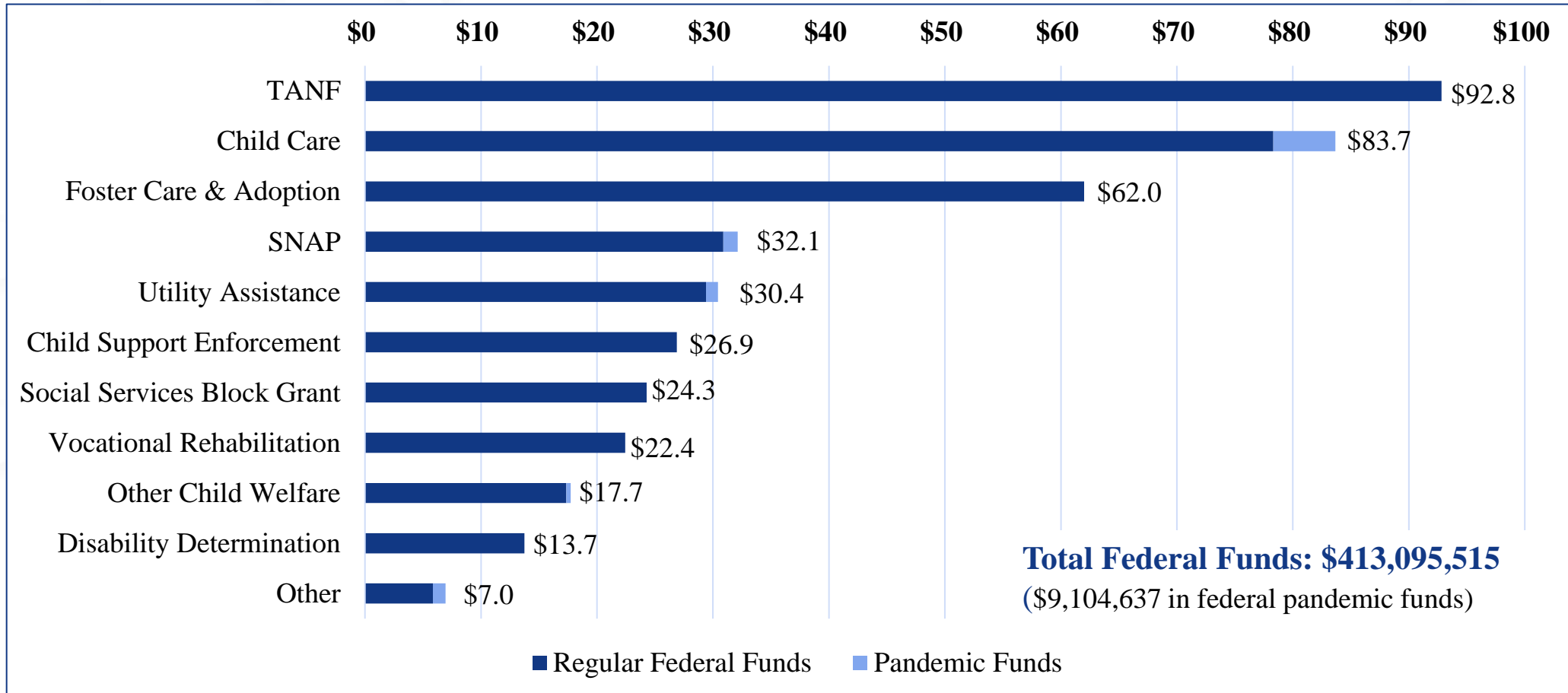
# FY 2024 AF EXPENDITURES BY PROGRAM (MILLIONS)



# FY 2024 SGF BY PROGRAM (MILLIONS)

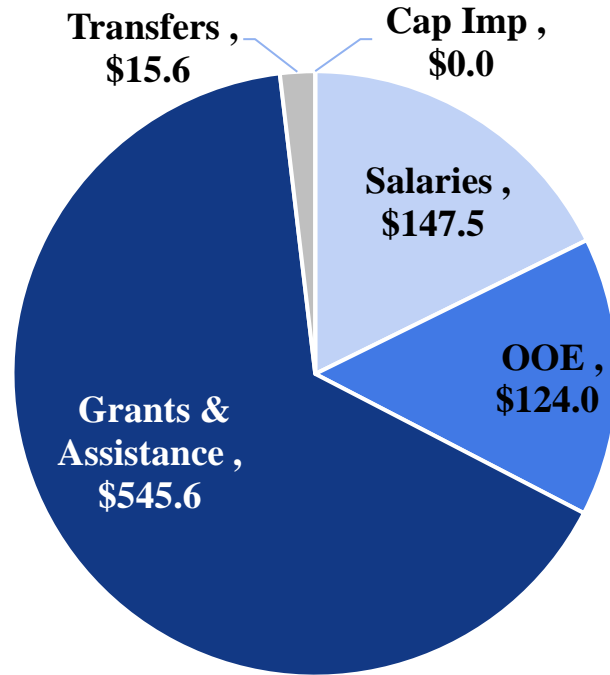


# FY 2024 FEDERAL FUNDS (MILLIONS)





# FY 2024 EXPENDITURE CATEGORIES (MILLIONS)



## Salaries

Region Service Delivery	\$99.9
Prevention and Protection	12.3
Administration	8.8
Economic & Employment	8.7
Information Technology	7.6
Rehabilitation Services	7.5
Child Support Services	2.3
Dev. Disability Council	0.4
<b>Total</b>	<b>\$147.5</b>

## OOE

Economic & Employment	\$13.6
Information Technology	36.1
Child Support Services	30.5
Region Service Delivery	17.8
Prevention and Protection	11.5
Administration	8.9
Rehabilitation Services	5.4
Dev. Disability Council	0.2
<b>Total</b>	<b>\$124.0</b>

## Grants & Assistance

Prevention and Protection	\$380.1
Economic & Employment	145.8
Rehabilitation Services	19.2
Other	0.4
<b>Total</b>	<b>\$545.6</b>

## Transfers

\$15.6

## Capital Improvements

\$0.0

# QUESTIONS?

---