

Prevention in Kansas

In this issue...

- Virtual Holiday with DCCCA *pg 1*
- TANF Grant spotlights domestic violence and sexual abuse *pg 2-4*
- The Kansas Crossover Youth State Policy Team *pg 5*
- Newsletter Retrospective *pg 6*

Send us a message to be added to our listserv, or send feedback

DCF.FamilyFirst@ks.gov

[View past issues in the archive](#)



A virtual holiday celebration with DCCCA

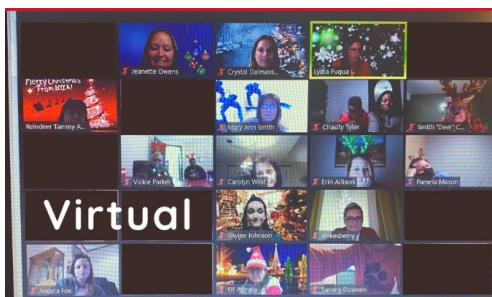
DCCCA hosted a virtual Christmas Party on December 4, to bring the Christmas spirit to children and parents safely in their homes. Santa has close ties to members on the Executive Team at DCCCA, so he was happy to attend the virtual celebration. His arrival was just in time for the children to share their lists for the holiday season. DCCCA Family Preservation, CPA, and Prevention hosted the event. Children and parents dressed up in the holiday swag to participate.

Zoom provided the opportunity for children and their parents to enjoy small breakout rooms. The festivities' agenda, selected by the children, included Princess Tina and Lady Lea, interactive games, caroling, crafts, a Christmas movie, trivia and charades, and a visit from Jolly Ol' Saint Nick himself. It was a hoot to watch the kids teach their parents a little thing or two about technology!

One of the interactive games was show and tell. Children were asked to find reindeer food in their house. We learned that Rudolph and his friends are going to be well-fed this year in Kansas with carrots, chocolate, and oats. Children and parents joined in singing Christmas carols with a musical duo to spread Christmas cheer by singing loud for all in Kansas to hear. To close out the night, Santa zoomed in for a special treat for the children.

Christi Smith, Family Preservation Director, reflected on the event. "The look of excitement on the children's faces and hearing the laughter and joy in their voice was priceless. This event gave children and families an opportunity to see they are not alone on their journey."

DCCCA provides Family Preservation in the Wichita and Kansas City Regions



Top right: Caroling with the musical duo. Top left: Santa Clause making an entrance. Bottom Left: DCCCA staff hanging out with families (covered by black square) during the celebration

TANF Grant Spotlights: domestic violence and sexual abuse

This is our third installment of TANF Grant spotlights. Visit the [September issue](#) for information about the TANF funded in-school and after-school programs in Kansas, and the [November issue](#) for Youth and Family Stability grants.

A key component of the Personal Responsibility and Work Opportunity Reconciliation Act of 1996 (PRWORA) is the creation of the Temporary Assistance for Needy Families (TANF) program. TANF is a federally funded block grant, administered by the Office of Family Assistance by the Administration for Children & Families through the U.S. Department of Health and Human Services. States use TANF funds to design and implement programs intended to assist needy families in achieving

self-sufficiency. Within the Kansas DCF, TANF funded programs are managed by the Economic and Employment Services (EES) division.

While states are allowed great latitude in TANF spending, TANF funded programs must meet at least one of the following four federally legislated purposes.

- provide assistance to needy families so that children can be cared for in their own homes or in the homes of relatives;
- end the dependence of needy parents by promoting job preparation, work, and marriage;
- prevent and reduce the incidence of out-of-wedlock pregnancies
- encourage the formation and maintenance of two parent families.

Since 1999, TANF families who disclose to DCF they are experiencing domestic violence and sexual abuse (DV/SA) are afforded the opportunity to work with local DV/SA agencies. The purpose of TANF funded DV/SA programs is to provide services including safety planning, financial literacy training, parenting skills training, outreach services, batterer intervention, and other appropriate DV/SA services. Services are available to recipients of TANF, Food Assistance, Child Care Assistance, and families ineligible for receipt of TANF assistance.

The following spotlighted grants represent the TANF funded DV/SA programs for federal fiscal year 2021.

Catholic Charities, Inc., Diocese of Wichita— The Catholic Charities SAFE Project serves survivors of DV/SA throughout the Diocese of Wichita located in the following 25 counties: Allen, Bourbon, Butler, Chase, Chautauqua, Cherokee, Cowley, Crawford, Elk, Greenwood, Harper, Harvey, Kingman, Labette, Marion, McPherson, Montgomery, Morris, Neosho, Reno, Rice, Sedgwick, Sumner, Wilson and Woodson.

The partnership created with DCF Service Centers has allowed Catholic Charities to assist and stabilize families in crisis. Career Navigators refer recipients to the program providing the opportunity to safety plan, provide healthy relationship, parenting, and budgeting education; meeting an important goal for both agencies and parents, which is to become employable.

Many survivors of DV/SA contact SAFE when they are in need, seeking assistance with deposit, rent or utilities. The grant funds allotted to SAFE have given families a monetary boost needed to take care of an immediate crisis; often for many it is keeping the family together and in a safe

environment. It has allowed case managers the opportunity to advocate for participants, empowering the survivor, helping them realize they are equipped with the tools to succeed, and are capable of improving their situation and informing them of many resources and community agencies available to assist families throughout their journey.

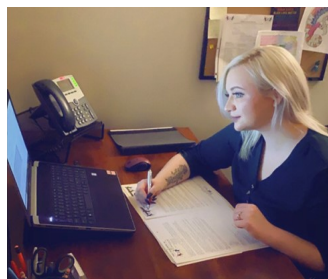
The funds have allowed Catholic Charities Inc, to not only collaborate with DCF but also build relationships with various vendors and agencies in Kansas. Without these funds, the awareness and services provided to hundreds of families would be limited.

COVID-19 affected families in many ways; many survivors have lost jobs and resources, at times, have been less accessible with the abusers still residing within the home. This grant has allowed SAFE Project to assist families throughout the pandemic by providing them the same level of services, but in a different way to allow themselves and their families to remain safe.

Family Crisis Center, Inc., Great Bend

Family crisis center ensures survivors of domestic and sexual assault in a ten county area receive high quality advocacy services. Covering Barton, Barber, Comanche, Edwards, Kiowa, Ness Pawnee, Pratt, Rush, and Stafford counties, the DCF funded advocate works with survivors in the domestic violence shelter as well as the Great Bend and Pratt offices.

Services address immediate safety, safety planning (including assessing needs for protection from abuse orders), or emergency shelter services. Staff also provide individual counseling and emotional support, as the survivor



determines their priorities and goals. Advocates educate survivors on the dynamics of power and control and

the cycle of violence, as it relates to domestic abuse and ensures child abuse information is also covered, especially in context with domestic violence. Included in advocacy services are financial empowerment counseling, parenting and life skills. Advocates assist in

employment seeking activities, such as assistance in filling out employment applications, transportation to job sites even drop off applications, provide rides to interviews or transportation to employment sites.

Family Crisis Center advocates keep safety for each individual a primary concern. Safety planning and determining what is needed for participants to be safe, may include temporary shelter or relocation. Services are available on an outreach basis through the Great Bend and Pratt offices, or the domestic violence shelter in Great Bend.

(spotlights continued next page)

TANF Grant Spotlights: domestic violence and sexual abuse

The Willow Domestic Violence Center, Lawrence– The Willow Domestic Violence Center provides services to all survivors of domestic violence, human trafficking, sexual assault and stalking. The TANF grant funds staff throughout the entire service area of Douglas, Franklin and Jefferson counties. DCF's Fiscal year 2021 will allow the staff to serve families receiving TANF, Food Assistance, Child Care, non-TANF eligible participants and Outreach services for survivors of DV/SA who could flourish with from support of advocates nonetheless.

The Willow's HOPEworks program, implemented in 2015, provides work program for cash assistance recipients who have experienced domestic violence. Through this partnership with DCF the program includes safety planning, career planning, financial literacy, healthy relationships, and self-sufficiency plans. Years later, the Willow is proud to continue these services and expand the audience eligible to receive them. "Our partnership with DCF allows us to innovate, which is key to always growing in our domestic violence prevention efforts, as well as our service and support to the survivors who need us so deeply," said Megan Stuke, Executive Director at the Willow.



Willow advocates sit on multiple community coordinated response teams, such as community agencies including hospitals, family centers, law enforcement, courts, and family preservation agencies. Every quarter, the response teams meet and discuss opportunities for wrap-around services for families. This has been an integral function for the groups, especially with the impact of COVID-19 and the unforeseen barriers in the service area.

The Willow Domestic Violence Center also exchanges services with multiple community agencies. Advocates visit with live-in facilities such as inpatient rehabilitation centers and county jails to offer support and prevention education to participants. Topics range from healthy relationships, the effects of mass incarceration and/or drugs and alcohol on experiences with trauma, and reintegration with families and the community. Batterers Intervention programs provide curriculum for community support groups and make referrals to ensure strong victim contacts. Housing and credit counseling advisors come to offer insight during financial health groups to address trauma and spending and budgeting for families, providing a safe space for reflection and family planning for many participants.

The HOPEworks work program will continue to strive for Hope, Opportunity, Progress, and Empowerment. Through those goals, communities will be educated and families will have an increased likelihood of stability while maintaining healthy relationships.

YWCA Center for Safety and Empowerment, Topeka– The YWCA of Northeast Kansas' Center for Safety and Empowerment (CSE) provides safety and supportive advocacy services to survivors of domestic violence, sexual assault, stalking, and human trafficking in Shawnee, Brown, Jackson, and Wabaunsee Counties. Through the DCF partnership survivors of DV/SA who receive TANF, Food Assistance, Child Care, non-TANF eligible individuals receive outreach services to achieve safe and self-sufficient lives through the provision of intensive case management, peer counseling, and safety planning services, as well as DV/SA education and short-term, non-recurrent financial assistance.

For survivors of DV/SA, the violence they experience takes many forms; however, 99% of survivors of intimate partner violence experience financial abuse within the context of their relationship (Allstate Foundation, 2019). This financial abuse creates significant barriers to survivors and their children in achieving safety and stability. Financial abuse prevents survivors from acquiring, using or maintaining financial resources, and survivors of financial abuse live a controlled life where they have been deliberately put into a position of dependence, making it hard for the survivor to break free. Furthermore, they often have difficulty obtaining and maintaining employment due to these direct actions or due to the impact of the trauma that is created by the abuse. Thus, families receiving TANF, Food Assistance, Child Care, non-TANF eligible participants and outreach services who also experience DV/SA face unique barriers in obtaining independence and leading self-sufficient lives.

As the following story demonstrates, these services, made available through the partnership with Kansas DCF and YWCA CSE are critical to the health and well-being of the survivors and their children in our community.

"Our DCF Advocate was connected with a survivor through a referral while they were staying at our shelter due to the level of danger they were experiencing in their home. The survivor and their children were considered homeless and had just come to Kansas in an effort to seek safety. While working with the advocates at the shelter and with our DCF Advocate, this survivor was able to apply for and begin receiving Food Assistance. Throughout the months, our DCF Advocate was able to provide case management and emotional support for the survivor and was also able to connect them to various agencies in Topeka that offered financial and material assistance to help them. From there, our DCF Advocate was able to connect the survivor with a Career Navigator within DCF's Goals Program. After collaboration with the Career Navigator, the survivor was connected with Impact Avenues, in order to start the process of getting the survivor and their children into long-term, safe housing. It was through the wraparound services offered in true community partnership and through the survivor's amazing dedication and hard work that they were able to find a job, apply for and receive Child Care and Food Assistance benefits, transition into stable housing that is free of violence, and provide a healthy and safe atmosphere for their children to grow and thrive."

(spotlights continued next page)

TANF Grant Spotlights: domestic violence and sexual abuse

Friends of Yates, Kansas City- Since 1980, Friends of Yates (FOY) has continuously provided the first, and currently the only, comprehensive domestic violence program in the Kansas City service area. FOY has a long history of successfully working with the Wyandotte County DCF to provide DV/SA through a previous sub-contract for services under the Orientation, Assessment, Referral and Safety (OARS) Program and current DV/SA contract, “Pathways to Advocacy, Violence-free living and Economic Empowerment” (PAVE) program.

Funding under this project has allowed FOY to provide trauma-informed and survivor centered DV/SA services in a manner that will assist families receiving TANF, Food and/or Childcare assistance and non-TANF eligible participants with safety planning, developing healthy relationships, engage in effective parenting methods, achieve self-sufficiency, and economic empowerment.

Services include, individual counseling, individual and group meetings, safety planning, legal advocacy, job readiness skills, financial empowerment, and more. To address the specific prevention issues of dating violence with teens in the community, the PAVE program works with local middle and high schools and youth programs to provide a series of virtual workshops on the dynamics of teen dating violence, red flags and characteristics of healthy relationships.

The Community Awareness component of the PAVE program works to display billboards and posters in English and Spanish, around Wyandotte County to educate the community about domestic violence/sexual/teen dating violence on how to “Recognize, Respond, and Refer” and virtual community trainings, presentations, and use of social media and mainstream media.

Safehome, Overland Park- As Johnson County’s only provider of shelter and supportive services for victims of domestic violence, Safehome helps victims break the cycle of violence in their lives. Safehome serves Johnson and Miami counties. The full range of wrap-around services include: 1) immediate safety for victims identified in high danger of injury or death, 2) shelter and support services, 3) professional counseling to help victims heal from abuse, 4) crisis counseling, information, referrals and emotional support, 5) court and legal advocacy, and 6) case management and outreach support for victims living in the community. All of Safehome services are provided at no cost to the client.

Victims of domestic violence face many challenges. They need ongoing financial tools and resources and emotional support to help them successfully achieve economic independence and find alternatives to returning to abusive situations. People in abusive relationships are often denied opportunities to earn or manage money, establish credit, or interact with banks. Many do not have access to resources for professional skill development.

Research affirms that individuals require support services that simultaneously provide both tangible (i.e. financial, shelter, legal assistance) and psychological help. Safehome provides resources so survivors and their children can permanently leave abusive situations

and successfully establish safety, healing, and financial independence. All of these resources are made available to participants in the DCF program.

Through DCF funding, Safehome’s DCF and Housing Case Manager serve shelter residents and outreach clients who are survivors of domestic violence and who are eligible recipients of TANF, Child Care (CC), and/or Food Assistance (FA). In addition to working with clients, the DCF and Housing Case Manager also provides community education on domestic violence and Safehome services.

Through this program, survivors increase their feelings of safety and learn the value of safety planning, feel empowered to break the cycle of domestic violence by understanding the importance of healthy relationships, become more knowledgeable about the cycle of domestic violence, feel supported as parents and enhance their parenting skills, and improve self-sufficiency skills and financial independence.



Domestic Violence and Sexual Abuse Resources

*agency has a TANF funded program

Catholic Charities Inc. SAFE Project* (Wichita): <https://www.catholiccharitieswichita.org/safe-project/>

Family Crisis Center, Inc.* (Great Bend): <http://www.familycrisisctr.org/>

Friends of Yates* (Kansas City): <https://friendsofyates.org/>

Safehome*(Overland Park): <https://safehome-ks.org/>

The Willow Domestic Violence Center* (Lawrence): <https://www.willowdvcenter.org/>

YWCA Center for Empowerment* (Topeka): <https://www.ywcaneks.org/>

Kansas Coalition Against Sexual & Domestic Violence Crisis Hotline: 1-888-363-2287

Visit the [August issue](#) to read about the Kansas Coalition Against Sexual & Domestic Violence: <https://www.kcsdv.org/>

Crossover Youth State Policy Team workgroups

This is the third update from the Crossover Youth Practice Model (CYPM) coordinators. Refer to [October newsletter](#) and the [November newsletter](#) for previous updates.

The Statewide Crossover Youth State Policy Team has 3 active workgroups:



The Educational Stability workgroup focuses on continuity and stability of education for youth who move from one placement to the next to ensure they do not lose credits when they have to change schools.

The Prevention workgroup will

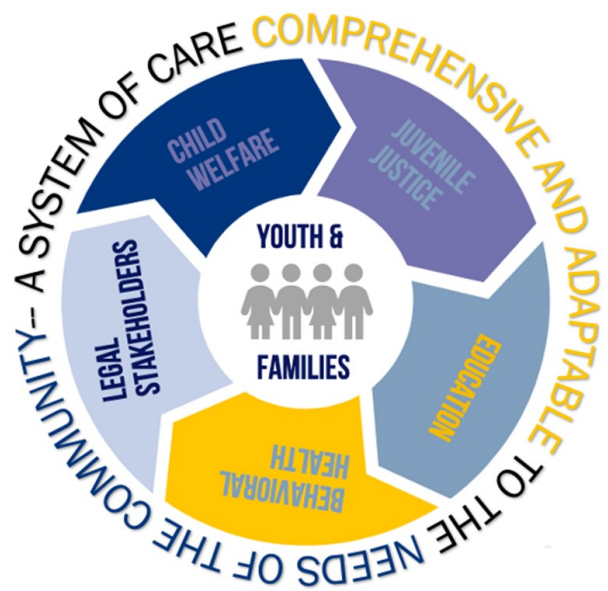
focus on an identified population of youth and strive to prevent them from crossing over from wither juvenile justice to child welfare or child welfare to juvenile justice. The first focus point is around communication and not a population group. Communication amongst all agencies involved in a youth's case is a key factor.

The Information Sharing workgroup has a focus on information sharing, what exists and what needs to be created or improved. This workgroup is currently creating various sharable documents to outline different pathways which would transform a youth into a crossover youth, both on the child welfare side and juvenile justice side. Another example of sharable documents in progress include a list of Kansas statutes denoting existing information sharing regulations.

Shawnee county opted to have two different teams; a Leadership team and an Implementation team. Members of the Leadership team are in the process of creating the implementation team members list. Georgetown University and the CYPM Coordinators are assisting the county with a systems assessment which will assist in developing an implementation plan for the county. The county is discussing participants for listening sessions. A listening session invites youth and families who have been involved with the child welfare and juvenile justice systems to share both positive and negative experiences with these systems. Compensation is provided to youth and families for their participation in these listening sessions as well as their participation on the implementation team.

In Montgomery County the Leadership and Implementation team were combined. As the systems assessment had been completed, the next step for the county is to develop an implementation plan based on the results of this assessment. At the next scheduled meeting, December 17, discussions will begin regarding listening sessions. The county is working on identifying participants. Youth and families will be included on the combined leadership/implementation team once a plan is developed. These youth and families will receive compensation for their participation in the listening sessions as well as their participation on the implementation team.

Sedgwick county is working on reinvigorating the CYPM model. The county started the work back in 2015 but had delayed progress. With the current new practices and staff in place, the county is regaining momentum. Currently, a systems assessment is being worked on, once completed, an implementation plan will be created.



To learn more about the Crossover Youth State Policy Team and more information regarding past and upcoming meetings please visit: <https://www.doc.ks.gov/juvenile-services/crossover-youth-practice-model>



