



Independent Living Program / Self-Sufficiency Services Annual Report

SFY 2024 (July 1, 2023 – February 29, 2024)

The Independent Living (IL) program assists youth transitioning from foster care into adulthood, which can include self-advocacy, accessing community resources and supports, daily living skills, and efficiently managing financial resources. Kansas Chafee Foster Care Independence Program (CFCIP) provides for an array of services and supports to youth who are likely to "age out" of the foster care system. Kansas CFCIP services includes Basic Chafee, Subsidy, Start-Up Costs, Vehicle Repair and Maintenance, Transportation Costs, Education and Training Voucher (ETV), and Kansas Foster Child Educational Assistance Act, and Aged Out Medical.

- ❖ Basic Chafee funds are used to help youth with education, employment, financial management, housing and emotional support. Youth must meet Chafee eligibility criteria of: 1) Youth who are in an eligible out of home placement in the custody of DCF, KDOC-JS, or Tribal Authority for any length of time on or after the 14th birthday and 2) Chafee eligibility ends at age 21.
- ❖ Independent Living Subsidy (IL Subsidy) funds are used to assist youth working towards completion of secondary education and/or obtaining/maintaining stable employment. Young adults must meet Subsidy eligibility criteria of: 1) Released from an eligible out of home placement in the custody of DCF, KDOC-JS, or Tribal Authority on or after their 18th birthday and 2) Subsidy eligibility ends at age 21.
- ❖ ETV are available to youth for post-secondary education or certified training program expenses. Youth must meet ETV eligibility criteria of: 1) Youth served by DCF, KDOC-JS, or Tribal Authority currently or previously in foster care for any length of time on or after the 14th birthday, 2) Youth earned a high school diploma or GED, 3) are enrolled in a post-secondary education that is a pre-accredited, accredited, or certified training program, and the youth meets one of many sub-criteria, and 4) Youth can receive ETV supports for a maximum of five years. ETV eligibility ends when a youth turns 26.

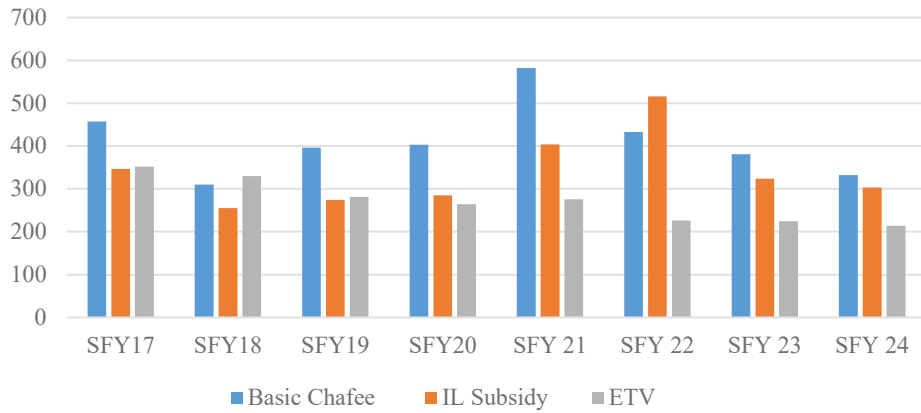
This report examines six years of data on youth who received Basic Chafee, IL Subsidy, ETV and/or Kansas Foster Child Education Assistance Act as part of Independent Living/Self-Sufficiency services through Department for Children and Families Prevention and Protection Services between SFY2017-2024 (Through February).

Executive Summary:

- Independent Living Program served a total of 869 (unduplicated) young adults in SFY2024 (Through February).
 - ◆ Of the 869 youth, a total of 332 received Basic Chafee funds, 303 received the IL Subsidy and 214 were provided post-secondary educational assistance through ETV. Youth may receive funding through multiple sources based on eligibility and Self-Sufficiency Plans.
- The majority of youth served by the IL Program within SFY2024 were female at 64.26% while 33.22% were male.
- There were (Data Not Available) Kansas Tuition Waiver new applications in SFY 2024.

Part I: Youth Served in Independent Living/Self-Sufficiency Program

Youth Served by State Fiscal Year 2024 (Through February)



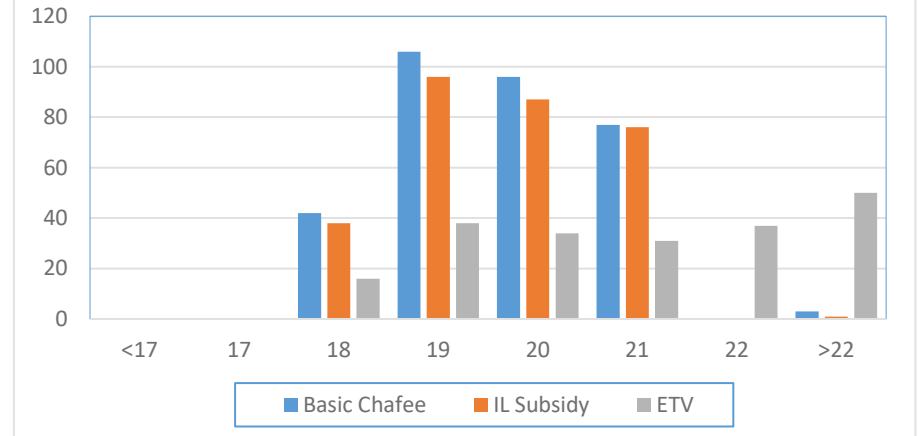
IL/Self-Sufficiency Program Trending over SFYs. (Through February)

- Basic Chafee youth receiving Chafee funds is **332** for FY2024.
- IL Subsidy youth participation is **303** for FY2024.
- ETV youth participation is **214** for FY2024.

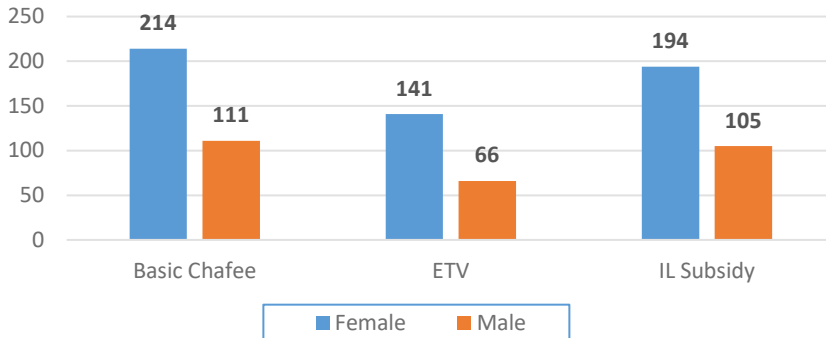
Nineteen year olds represented the largest age group for two of the three programs: 1) Basic Chafee - 31.9%; and 2) IL Subsidy - 31.7%.

The majority of youth receiving Basic Chafee funds (53.0%) and IL Subsidy (54.1%) and ETV funding (7.0%) were 20 years or older.

Age of Youth Served SFY 2024 (Through February)



Gender of Youth Served SFY 2024 (Through February)



Young adult gender breakdown by IL program include: (Through February)

- Basic Chafee, 64.46% were female while 33.43% were male.
- ETV, 65.89% were female while 30.8% were male.
- IL Subsidy, 64.03% were female while 34.65% were male.

Part II: Basic Chafee Funds

Basic Chafee activities and programs include, but are not limited to, help with education, employment, financial management, housing, emotional support and assured connections to caring adults for older youth in foster care.

Table 1: Basic Chafee Funds Youth Served SFY2017 - 2024 (Through February)

	SFY2017	SFY2018	SFY2019	SFY2020	SFY 2021	SFY 2022	SFY 2023	SFY 2024
Young Adults Served	457	504	396	403	582	433	381	332
Payment Totals	\$308,762	\$289,828	\$209,945	\$213,428	\$678,728	\$868,791	\$366,579	\$248,580
Annual Average per Young Adult	\$675.63	\$575.06	\$530.17	\$529.60	\$1,166.20	\$2,006.45	\$962.15	\$748.73

Table 2: Basic Chafee Funds Youth Served by Region SFY2017 - 2024 (Through February)

	SFY2017		SFY2018		SFY2019		SFY2020	
East	108	23.6%	129	25.6%	115	29.0%	86	21.3%
Kansas City	84	18.4%	94	18.7%	75	18.9%	71	17.6%
West	105	23.0%	110	21.8%	50	12.6%	66	16.4%
Wichita	160	35.0%	171	33.9%	156	39.4%	180	44.7%
Unable to Determine	0	0.0%	0	0.0%	0	0.0%	0	0.0%
Total	457	100%	504	100%	396	100%	403	100%
	SFY2021		SFY2022		SFY2023		SFY2024	
East	118	20.3%	102	23.6%	90	23.6%	84	25.3%
Kansas City	156	26.8%	95	21.9%	86	22.6%	68	20.5%
West	94	16.2%	61	14.1%	68	17.8%	72	21.7%
Wichita	214	36.8%	175	40.4%	137	36.00%	108	32.50%
Unable to Determine	0	0.0%	0	0.0%	0	0.00%	0	0.00%
Total	582	100%	433	100%	381	100%	332	100%

Part III: Independent Living Subsidy (IL Subsidy)

IL Subsidy is short-term assistance between the youth (ages 18 up to 21) and IL program. Youth shall be working towards completion of secondary education and/or obtaining/maintaining stable employment. The youth will be expected to work with his/her mentor (if assigned) and IL Coordinator to achieve the identified self-sufficiency goal. IL Subsidy is funded through the CFCIP. Youth's financial need and participation in the program are criteria for financial support which shall not exceed \$350.00 per month.

In SFY2018, IL program updated IL Subsidy policy to provided a tiered approach to target vulnerable youth transitioning from foster care towards independence.

Tier 1: Months 1-12 100% of subsidy based on need (PPS 7000A)

Tier 2: Months 13-18 90% of initial subsidy amount

Tier 3: Months 19-24 80% of initial subsidy amount

Tier 4: Months 25-36 70% of initial subsidy amount

Table 3: Independent Living Subsidy Youth Served SFY2017 - 2024 (Through February)

	SFY2017	SFY2018	SFY2019	SFY2020	SFY2021	SFY2022	SFY2023	SFY2024
Young Adults Served	347	328	274	285	404	516	324	303
Payment Totals	\$551,284	\$508,790	\$387,525	\$411,512	\$1,030,950	\$2,312,722	\$1,575,063	\$774,485
Annual Average per Young Adult	\$1,588.71	\$1,551.19	\$1,414.32	\$1,443.90	\$2,551.86	\$4,482.02	\$4,861.31	\$2,556.06

Table 4: Independent Living Subsidy Youth Served by Region SFY2017 - 2024 (Through February)

	SFY2017		SFY2018		SFY2019		SFY2020	
East	68	19.6%	46	14.0%	76	27.7%	86	30.2%
Kansas City	100	28.8%	73	22.3%	83	30.3%	93	32.6%
West	89	25.6%	55	16.8%	55	20.1%	61	21.4%
Wichita	90	25.9%	77	23.5%	60	21.9%	45	15.8%
Unable to Determine	0	0.0%	77	23.5%	0	0.0%	0	0.0%
Statewide	347	100%	328	100%	274	100%	285	100%
	SFY2021		SFY2022		SFY2023		SFY2024	
East	106	26.2%	126	24.4%	76	23.5%	74	24.4%
Kansas City	143	35.5%	169	32.8%	103	31.8%	97	32.0%
West	66	16.3%	52	10.1%	55	17.0%	53	17.5%
Wichita	89	22.0%	168	32.6%	87	26.9%	78	25.7%
Unable to Determine	0	0.0%	1	0.1%	3	0.8%	1	0.3%
Statewide	404	100%	516	100%	324	100%	303	100%

Part IV: ETV

The ETV program provides youth who meet eligibility criteria with post secondary support. Criteria includes completion of Self-Sufficiency Plan, ETV Program Plan documenting all post secondary educational costs, Free Application for Federal Student Aid (FAFSA), and successful submission of three scholarship applications. To receive financial support youth shall attend accredited public, private or non-profit post-secondary school or training programs in or out of state. ETV funds may be used to pay for education related costs including room and board, books, materials or tutoring. All ETV Plans shall begin July 1 and end June 30 of each year. Youth can receive ETV supports for a maximum of five years. ETV eligibility ends when a youth turns 26.

Table 5: ETV Youth Served SFY2017 – 2024 (Through February)

	SFY2017	SFY2018	SFY2019	SFY2020	SFY2021	SFY2022	SFY2023	SFY2024
Young Adults Served	352	351	281	264	276	226	225	214
Payment Totals	\$695,789	\$677,875	\$437,620	\$437,620	\$1,046,850	\$916,407	\$997,590	\$409,052
Annual Average per Young Adult	\$1,976.67	\$1,931.27	\$1,557.37	\$1,657.65	\$3,792.93	\$4,054.90	\$4,433.73	\$1,911.46

Table 6: ETV Youth Served by Region SFY2017 - 2024 (Through February)

	SFY2017		SFY2018		SFY2019		SFY2020	
East	73	20.7%	68	19.4%	66	23.5%	58	22.0%
Kansas City	97	27.6%	102	29.1%	85	30.2%	66	25.0%
West	97	27.6%	92	26.2%	54	19.2%	56	21.2%
Wichita	85	24.1%	89	25.4%	76	27.0%	83	31.4%
Out-of-State Education	0	0.0%	0	0.0%	0	0.0%	0	0.0%
Unable to Determine	0	0.0%	0	0.0%	0	0.0%	1	0.4%
Total	352	100%	351	100%	281	100%	264	100%
	SFY2021		SFY2022		SFY2023		SFY2024	
East	55	19.9%	66	29.2%	42	18.7%	48	22.4%
Kansas City	98	35.5%	78	34.5%	70	31.1%	65	30.4%
West	54	19.6%	45	19.9%	51	22.7%	45	21.0%
Wichita	67	24.3%	35	15.5%	60	26.7%	55	25.7%
Out-of-State Education	0	0.0%	0	0.0%	0	0.0%	0	0.0%
Unable to Determine	2	0.7%	2	0.9%	2	0.8%	1	0.5%
Total	276	100%	226	100%	225	100%	214	100%

Part V: Kansas Foster Care Educational Assistance Act Program (Tuition Waiver)

The Kansas Tuition Waiver Program waives tuition and required fees at state educational institutions in Kansas, including vocational-technical schools, community colleges, and state universities. Youth who are eligible to apply for the Kansas Foster Child Educational Assistance Act are enrolled in a Kansas educational institution and meet one of the following:

- i. In the custody of DCF and in a foster care placement on the date the youth attained 18 years of age; or
- ii. Released from custody of DCF prior to attaining 18 years of age, after having graduated from high school or fulfilled the requirements for a GED while in foster care placement and the custody of DCF; or
- iii. Adopted from a foster care placement on or after the youth's 16th birthday; or
- iv. Left a foster care placement subject to a permanent custodianship or guardianship under chapter 38 or 59 of the Kansas Statutes Annotated on or after the youth's 16th birthday.

In order to remain eligible for participation in the program, youth shall remain in good standing at the Kansas educational institution where the youth is enrolled and shall make satisfactory progress toward completion of the requirements of the educational program.

Eligibility for Kansas Foster Child Education Assistance service component ends at the conclusion of the semester during which the youth attains 23 years of age

Table 7: Tuition Waiver data from 2017 - 2024 (Through February)

Initial Semester of Participation	# of Applications Approved for Tuition Waiver							
	SFY2017	SFY2018	SFY2019	SFY2020	SFY2021	SFY2022	SFY2023	SFY2024
Spring	82	81	53	46	1	50	19	41
Summer	23	29	33	9	10	9	6	2
Fall	239	244	192	183	160	191	56	98
Total	344	354	278	238	171	250	81	141