



## FY 2020 Removals, Exits and Out of Home Summary (FACTS)

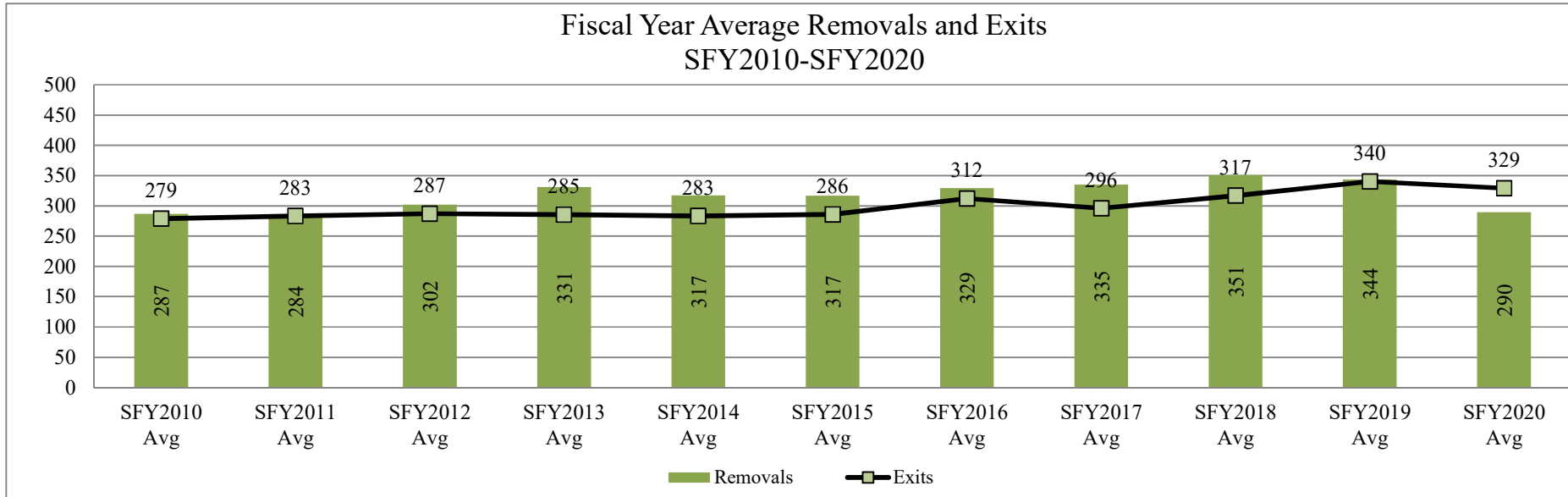
This report contains information on the number children removed into foster care in a given month, the number of children who exited foster care placement outside of their home in a given month, and the number of children who are in a foster care placement outside of their home (OOH) on the last day of each month. Information is provided by DCF Region and County.

Updated: 07/24/2020

By DCF Region	Type of Information	Jul	Aug	Sep	Oct	Nov	Dec	Jan	Feb	Mar	Apr	May	Jun	Fiscal year Total	Fiscal year Average
Kansas City Region	Removals	55	66	76	70	50	36	44	38	43	16	28	36	558	47
Kansas City Region	Exits	63	91	55	78	80	70	55	56	44	46	50	50	738	62
Kansas City Region	OOH Last Day of the Month	1647	1632	1669	1633	1612	1588	1587	1572	1544	1507	1491	1476		1,580
East Region	Removals	75	103	89	66	80	68	84	72	73	31	58	62	861	72
East Region	Exits	73	134	104	78	92	96	87	66	85	40	77	97	1,029	86
East Region	OOH Last Day of the Month	1992	1951	1954	1924	1896	1907	1927	1948	1886	1853	1834	1811		1,907
West Region	Removals	164	114	129	162	100	97	94	86	93	58	37	101	1,235	103
West Region	Exits	147	155	112	121	131	110	91	96	114	53	84	123	1,337	111
West Region	OOH Last Day of the Month	2223	2180	2201	2257	2233	2181	2168	2171	2159	2162	2115	2104		2,180
Wichita Region	Removals	69	93	117	73	72	56	103	51	58	30	44	57	823	69
Wichita Region	Exits	68	110	62	64	92	65	57	74	91	66	51	45	845	70
Wichita Region	OOH Last Day of the Month	1696	1684	1745	1743	1762	1767	1790	1774	1707	1669	1660	1670		1,722
State	Removals	363	376	411	371	302	257	325	247	267	135	167	256	3,477	290
State	Exits	351	490	333	341	395	341	290	292	334	205	262	315	3,949	329
State	OOH Last Day of the Month	7558	7447	7569	7557	7503	7443	7472	7465	7296	7191	7100	7061		7,389

\*Beginning in SFY2015 Discharges were replaced by Exits from Out of Home Placements.

Fiscal Year Average Removals and Exits  
SFY2010-SFY2020



**Data Sources:**

Removals- from FACTS

Exits- from FACTS

OOH Last Day of the Month- from FACTS

**Information By County grouped in DCF Regions**

County	Type of Information	Jul	Aug	Sep	Oct	Nov	Dec	Jan	Feb	Mar	Apr	May	Jun	Fiscal year Total	Fiscal year Average
AL ALLEN	Removals	5	4	7	5	3	3	0	4	0	2	4	3	40	4
AL ALLEN	Exits	2	7	1	6	3	10	9	5	7	1	2	3	56	5
AL ALLEN	OOH Last Day of the Month	94	95	97	102	102	102	95	85	81	78	79	82		91
AN ANDERSON	Removals	0	0	0	2	0	0	2	0	0	0	2	3	9	2
AN ANDERSON	Exits	0	0	0	0	0	0	0	1	0	0	0	1	2	1
AN ANDERSON	OOH Last Day of the Month	11	9	9	9	11	11	12	11	12	12	14	17		12
BB BOURBON	Removals	10	1	6	2	4	3	5	2	0	0	1	2	36	4
BB BOURBON	Exits	8	3	8	3	2	2	2	0	2	0	5	6	41	4
BB BOURBON	OOH Last Day of the Month	66	65	61	56	59	59	64	65	63	63	61	56		62
BR BROWN	Removals	0	6	2	1	3	5	3	3	0	3	5	2	33	3
BR BROWN	Exits	4	7	0	3	3	6	4	1	4	0	1	9	42	4
BR BROWN	OOH Last Day of the Month	79	74	76	75	74	74	74	79	71	71	75	67		74
CQ CHAUTAUQUA	Removals	7	0	0	0	0	0	0	0	0	0	0	0	7	7
CQ CHAUTAUQUA	Exits	0	5	0	0	0	0	0	0	0	0	0	0	5	5
CQ CHAUTAUQUA	OOH Last Day of the Month	10	5	5	5	5	5	5	5	5	5	5	5		5
CK CHEROKEE	Removals	6	16	3	6	6	1	11	7	0	2	0	0	58	6
CK CHEROKEE	Exits	1	11	12	7	5	1	8	6	4	4	5	2	66	6
CK CHEROKEE	OOH Last Day of the Month	66	71	62	59	60	61	71	72	66	61	57	56		64
CF COFFEY	Removals	0	0	0	0	1	3	0	4	0	0	0	0	8	3
CF COFFEY	Exits	2	2	0	0	2	1	1	0	2	1	0	1	12	2
CF COFFEY	OOH Last Day of the Month	17	14	14	12	13	13	15	19	16	17	17	15		15
CR CRAWFORD	Removals	9	3	12	4	3	6	6	15	9	4	2	2	75	6
CR CRAWFORD	Exits	5	13	11	7	1	6	8	12	10	1	7	6	87	7
CR CRAWFORD	OOH Last Day of the Month	149	138	140	134	135	138	145	159	141	138	132	129		140
DP DONIPHAN	Removals	0	0	2	0	0	1	0	3	0	2	0	5	13	3
DP DONIPHAN	Exits	0	1	0	1	2	0	4	0	0	3	0	3	14	2
DP DONIPHAN	OOH Last Day of the Month	35	35	37	36	34	35	31	34	32	33	32	34		34
FR FRANKLIN	Removals	1	2	2	2	9	3	9	0	3	0	2	2	35	4
FR FRANKLIN	Exits	4	5	6	6	7	6	4	0	3	1	3	3	48	4
FR FRANKLIN	OOH Last Day of the Month	87	83	80	75	72	76	75	88	84	81	80	81		80
JA JACKSON	Removals	1	1	5	0	0	0	0	0	0	1	1	2	11	2
JA JACKSON	Exits	2	3	1	0	3	4	1	4	0	1	2	1	22	2
JA JACKSON	OOH Last Day of the Month	42	39	44	44	41	37	37	33	33	33	32	33		37
JF JEFFERSON	Removals	0	2	0	2	1	1	0	1	2	0	3	1	13	2
JF JEFFERSON	Exits	1	3	1	2	2	0	1	0	0	0	0	1	11	2
JF JEFFERSON	OOH Last Day of the Month	33	31	26	26	25	26	25	25	27	27	28	28		27
LB LABETTE	Removals	2	9	1	3	6	2	7	0	7	0	1	3	41	4
LB LABETTE	Exits	0	3	2	8	5	4	1	5	9	1	2	2	42	4
LB LABETTE	OOH Last Day of the Month	47	53	55	53	55	53	58	51	47	46	44	45		51
LN LINN	Removals	1	0	2	1	1	2	1	1	7	0	6	0	22	2
LN LINN	Exits	0	3	1	2	2	0	0	0	2	0	3	6	19	3
LN LINN	OOH Last Day of the Month	33	30	31	34	34	35	36	37	39	38	42	35		35
MS MARSHALL	Removals	5	4	7	0	0	5	4	0	3	3	2	5	38	4
MS MARSHALL	Exits	4	9	4	3	1	1	1	1	1	0	6	9	40	4
MS MARSHALL	OOH Last Day of the Month	49	43	45	42	40	43	46	45	47	49	45	41		45

MI MIAMI	Removals	3	2	1	1	4	1	0	1	6	0	0	3	22	2
MI MIAMI	Exits	3	5	7	1	3	3	2	0	1	3	4	6	38	3
MI MIAMI	OOH Last Day of the Month	75	72	69	69	70	68	65	62	65	62	57	53		66
MG MONTGOMERY	Removals	7	6	0	7	13	8	4	4	12	0	10	9	80	8
MG MONTGOMERY	Exits	3	11	7	3	2	8	5	2	4	1	4	3	53	4
MG MONTGOMERY	OOH Last Day of the Month	168	159	155	153	162	174	178	181	181	179	185	191		172
NM NEMAHA	Removals	1	2	0	4	0	6	0	4	1	0	0	0	18	3
NM NEMAHA	Exits	0	3	0	0	3	0	1	1	0	0	0	8	16	3
NM NEMAHA	OOH Last Day of the Month	15	14	14	18	14	20	19	22	23	23	23	15		18
NO NEOSHO	Removals	0	6	8	0	2	1	4	5	0	0	0	1	27	4
NO NEOSHO	Exits	4	6	2	0	2	12	9	1	2	3	2	0	43	4
NO NEOSHO	OOH Last Day of the Month	87	86	93	94	94	88	84	88	81	76	72	73		85
OS OSAGE	Removals	3	2	1	0	0	0	0	0	0	0	1	0	7	2
OS OSAGE	Exits	3	0	1	1	2	3	1	1	1	0	1	3	17	2
OS OSAGE	OOH Last Day of the Month	39	41	45	45	38	37	37	35	30	29	28	28		36
PT POTTAWATOMIE	Removals	0	5	0	4	0	0	9	0	1	1	4	1	25	4
PT POTTAWATOMIE	Exits	0	4	1	2	0	4	9	0	0	1	4	0	25	4
PT POTTAWATOMIE	OOH Last Day of the Month	21	22	20	21	21	20	16	17	18	18	14	19		19
SN SHAWNEE	Removals	14	28	23	21	19	17	18	17	18	13	14	16	218	18
SN SHAWNEE	Exits	26	27	32	18	37	22	13	23	32	18	22	21	291	24
SN SHAWNEE	OOH Last Day of the Month	695	695	697	688	659	657	666	667	654	647	648	644		668
WB WABAUNSEE	Removals	0	1	0	0	1	0	1	0	1	0	0	1	5	1
WB WABAUNSEE	Exits	1	2	1	1	2	1	2	2	0	0	0	1	13	1
WB WABAUNSEE	OOH Last Day of the Month	12	12	10	7	7	5	6	4	5	3	3	3		6
WL WILSON	Removals	0	2	1	1	4	0	0	1	3	0	0	1	13	2
WL WILSON	Exits	0	0	6	1	3	0	0	1	0	0	2	2	15	3
WL WILSON	OOH Last Day of the Month	45	48	46	46	50	50	48	46	49	49	48	48		48
WO WOODSON	Removals	0	1	6	0	0	0	0	0	0	0	0	0	7	4
WO WOODSON	Exits	0	1	0	3	0	2	1	0	1	1	2	0	11	2
WO WOODSON	OOH Last Day of the Month	17	17	23	21	21	20	19	18	16	15	13	13		18
AT ATCHISON	Removals	2	3	1	1	4	3	1	3	0	0	2	0	20	2
AT ATCHISON	Exits	4	2	1	4	0	7	1	2	2	0	1	0	24	3
AT ATCHISON	OOH Last Day of the Month	61	64	64	61	63	65	63	61	64	68	69	66		64
DG DOUGLAS	Removals	11	1	5	6	4	4	7	4	12	0	1	4	59	5
DG DOUGLAS	Exits	8	10	8	4	14	8	8	7	1	9	7	4	88	7
DG DOUGLAS	OOH Last Day of the Month	189	186	192	182	171	169	166	165	179	171	165	166		175
JO JOHNSON	Removals	14	30	35	37	19	9	12	21	7	11	18	18	231	19
JO JOHNSON	Exits	27	28	17	21	40	27	12	24	19	15	18	26	274	23
JO JOHNSON	OOH Last Day of the Month	559	563	593	597	590	572	572	575	555	546	545	537		567
LV LEAVENWORTH	Removals	7	8	3	2	5	2	10	3	9	1	1	3	54	5
LV LEAVENWORTH	Exits	4	16	9	12	8	6	10	4	6	5	9	3	92	8
LV LEAVENWORTH	OOH Last Day of the Month	209	207	203	190	186	183	188	182	181	173	173	164		187
WY WYANDOTTE	Removals	21	24	32	24	18	18	14	7	15	4	6	11	194	16
WY WYANDOTTE	Exits	20	35	20	37	18	22	24	19	16	17	15	17	260	22
WY WYANDOTTE	OOH Last Day of the Month	629	612	617	603	602	599	598	589	565	549	539	543		587
BT BARTON	Removals	4	0	8	7	7	7	11	14	8	2	1	10	79	7
BT BARTON	Exits	5	18	7	6	9	3	2	3	1	4	11	14	83	7
BT BARTON	OOH Last Day of the Month	132	116	118	117	115	114	120	130	135	133	124	123		123

CS CHASE	Removals	1	0	0	1	1	2	0	2	1	0	0	0	8	1
CS CHASE	Exits	0	0	0	0	0	3	1	0	1	0	0	0	5	2
CS CHASE	OOH Last Day of the Month	15	15	15	16	17	16	15	16	16	16	16	16		16
CN CHEYENNE	Removals	1	0	4	0	2	0	1	0	0	1	0	0	9	2
CN CHEYENNE	Exits	0	0	0	0	1	0	0	1	1	1	0	0	4	1
CN CHEYENNE	OOH Last Day of the Month	3	3	7	7	4	4	4	4	6	7	7	7		5
CA CLARK	Removals	0	0	0	0	0	0	2	0	0	0	0	0	2	2
CA CLARK	Exits	1	0	4	0	0	0	4	0	0	0	1	0	10	3
CA CLARK	OOH Last Day of the Month	9	10	6	6	6	6	4	4	4	4	3	3		5
CY CLAY	Removals	4	0	0	2	0	6	2	0	2	0	0	0	16	3
CY CLAY	Exits	0	5	2	1	0	4	2	1	1	0	0	0	16	2
CY CLAY	OOH Last Day of the Month	24	19	16	17	17	20	21	19	20	20	20	20		19
CD CLOUD	Removals	2	1	9	4	2	0	3	0	0	3	0	7	31	4
CD CLOUD	Exits	4	1	7	9	4	5	11	2	5	0	4	6	58	5
CD CLOUD	OOH Last Day of the Month	75	73	76	74	71	64	54	47	43	49	49	46		60
CM COMANCHE	Removals	0	0	0	1	0	0	0	0	0	0	0	0	1	1
CM COMANCHE	Exits	0	0	0	0	0	0	0	0	0	0	0	0	0	0
CM COMANCHE	OOH Last Day of the Month	4	4	4	5	5	5	5	5	5	5	5	5		5
DC DECATUR	Removals	0	2	0	0	0	0	0	2	0	0	0	0	4	2
DC DECATUR	Exits	0	2	0	0	0	0	2	0	0	0	0	0	4	2
DC DECATUR	OOH Last Day of the Month	4	4	4	4	4	4	2	4	4	4	4	4		4
DK DICKINSON	Removals	2	1	1	8	3	2	7	0	3	0	2	0	29	3
DK DICKINSON	Exits	3	13	0	5	1	5	7	2	2	1	0	6	45	5
DK DICKINSON	OOH Last Day of the Month	63	52	53	51	61	47	47	47	47	46	46	40		50
ED EDWARDS	Removals	0	0	0	0	2	0	1	0	0	0	0	0	3	2
ED EDWARDS	Exits	0	0	0	1	1	0	0	1	0	1	0	0	4	1
ED EDWARDS	OOH Last Day of the Month	12	9	9	9	10	8	9	9	9	9	9	9		9
EL ELLIS	Removals	1	10	1	5	6	4	3	6	10	0	2	3	51	5
EL ELLIS	Exits	6	4	3	3	3	1	1	1	7	0	8	7	44	4
EL ELLIS	OOH Last Day of the Month	77	82	81	80	81	82	80	87	96	96	89	88		85
EW ELLSWORTH	Removals	1	2	4	0	3	4	1	0	0	4	0	1	20	3
EW ELLSWORTH	Exits	2	3	1	4	2	2	1	2	6	1	0	1	25	2
EW ELLSWORTH	OOH Last Day of the Month	15	16	20	16	18	20	21	19	13	15	15	14		17
FI FINNEY	Removals	6	8	13	12	5	10	11	3	8	2	4	5	87	7
FI FINNEY	Exits	10	2	5	6	2	12	7	13	8	2	1	5	73	6
FI FINNEY	OOH Last Day of the Month	126	134	140	148	148	146	151	142	145	144	147	150		143
FO FORD	Removals	13	0	8	4	5	6	0	1	9	1	5	1	53	5
FO FORD	Exits	13	8	5	3	13	6	3	1	2	2	7	5	68	6
FO FORD	OOH Last Day of the Month	137	126	128	133	125	125	117	118	125	124	122	117		125
GE GEARY	Removals	27	11	10	22	14	5	7	3	11	3	1	5	119	10
GE GEARY	Exits	9	7	6	9	11	9	6	11	15	4	4	4	95	8
GE GEARY	OOH Last Day of the Month	116	114	120	134	140	130	136	127	122	120	119	120		125
GO GOVE	Removals	0	0	0	0	0	0	0	0	0	0	0	0	0	0
GO GOVE	Exits	0	0	0	1	0	0	0	0	0	0	0	0	1	1
GO GOVE	OOH Last Day of the Month	1	1	1	1	0	0	0	0	0	0	0	0		1
GH GRAHAM	Removals	0	3	1	6	0	0	0	0	0	0	0	2	12	3
GH GRAHAM	Exits	0	0	0	0	0	0	3	1	0	1	0	2	7	2
GH GRAHAM	OOH Last Day of the Month	2	5	6	6	12	12	9	8	8	7	7	7		7

GT GRANT	Removals	4	2	0	0	1	0	2	4	1	0	0	0	14	2
GT GRANT	Exits	0	1	1	4	0	1	5	0	2	1	4	3	22	2
GT GRANT	OOH Last Day of the Month	29	30	29	29	26	25	22	22	24	24	20	17		25
GY GRAY	Removals	0	0	0	0	0	1	0	0	0	0	0	0	1	1
GY GRAY	Exits	2	0	0	0	0	0	0	0	1	0	0	1	4	1
GY GRAY	OOH Last Day of the Month	8	8	8	9	8	8	8	9	8	8	8	7		8
GL GREELEY	Removals	0	0	0	0	0	0	0	0	0	0	0	4	4	4
GL GREELEY	Exits	0	0	0	0	1	0	0	1	0	0	0	1	3	1
GL GREELEY	OOH Last Day of the Month	3	3	3	3	2	2	2	1	1	1	1	4		2
HM HAMILTON	Removals	0	0	0	0	0	1	1	0	0	0	0	0	2	1
HM HAMILTON	Exits	0	0	0	0	0	0	0	0	0	0	0	0	0	0
HM HAMILTON	OOH Last Day of the Month	6	6	6	6	6	9	10	10	10	10	10	10		8
HV HARVEY	Removals	7	8	4	2	0	0	3	1	2	2	4	6	39	4
HV HARVEY	Exits	11	5	3	3	2	3	2	0	1	0	0	2	32	4
HV HARVEY	OOH Last Day of the Month	66	68	68	66	66	62	64	68	65	66	69	73		67
HS HASKELL	Removals	0	0	0	3	0	0	0	0	1	0	0	0	4	2
HS HASKELL	Exits	0	0	0	0	0	0	0	0	0	0	0	0	0	0
HS HASKELL	OOH Last Day of the Month	4	4	4	7	7	7	7	7	8	8	8	8		7
HG HODGEMAN	Removals	0	0	0	0	0	0	0	0	0	0	0	0	0	0
HG HODGEMAN	Exits	0	0	1	0	0	0	0	0	0	0	0	0	1	1
HG HODGEMAN	OOH Last Day of the Month	2	2	1	1	1	1	1	1	1	1	1	1		1
JW JEWELL	Removals	0	0	0	1	0	0	0	6	0	0	0	0	7	4
JW JEWELL	Exits	0	0	1	0	0	0	0	1	0	0	0	0	2	1
JW JEWELL	OOH Last Day of the Month	2	2	1	2	2	2	2	6	7	7	7	7		4
KE KEARNY	Removals	1	0	2	3	0	0	1	0	0	0	0	0	7	2
KE KEARNY	Exits	0	0	0	0	0	0	2	0	0	0	0	2	4	2
KE KEARNY	OOH Last Day of the Month	11	12	16	19	19	19	19	18	18	18	18	13		17
KW KIOWA	Removals	0	0	0	0	2	0	0	0	0	0	0	0	2	2
KW KIOWA	Exits	0	0	0	0	0	0	1	0	0	0	0	0	1	1
KW KIOWA	OOH Last Day of the Month	2	2	2	2	4	4	2	2	2	2	1	1		2
LE LANE	Removals	0	2	0	0	0	0	0	0	0	0	0	0	2	2
LE LANE	Exits	0	2	0	0	0	0	0	0	0	2	0	0	4	2
LE LANE	OOH Last Day of the Month	8	8	8	8	8	8	8	8	8	6	6	6		8
LC LINCOLN	Removals	0	2	0	0	0	0	0	1	1	0	0	0	4	1
LC LINCOLN	Exits	0	0	1	0	0	0	0	0	0	0	0	0	1	1
LC LINCOLN	OOH Last Day of the Month	9	9	8	8	8	10	10	11	12	12	12	12		10
LG LOGAN	Removals	0	0	1	0	1	0	0	0	0	0	0	3	5	2
LG LOGAN	Exits	0	1	0	0	0	0	0	0	0	0	0	2	3	2
LG LOGAN	OOH Last Day of the Month	5	4	4	4	5	5	5	5	6	6	6	7		5
LY LYON	Removals	4	3	5	9	2	4	3	2	0	0	3	10	45	5
LY LYON	Exits	11	7	5	9	6	3	0	1	8	1	1	12	64	6
LY LYON	OOH Last Day of the Month	156	156	163	161	155	153	156	158	150	148	151	152		155
MN MARION	Removals	1	0	1	2	0	0	0	0	3	0	1	1	9	2
MN MARION	Exits	3	0	3	0	0	0	0	3	0	0	1	0	10	3
MN MARION	OOH Last Day of the Month	34	33	31	29	31	31	32	31	32	32	33	33		32
MP MCPHERSON	Removals	8	7	0	10	1	6	4	6	0	5	0	3	50	6
MP MCPHERSON	Exits	1	6	5	6	3	2	0	4	2	0	4	3	36	4
MP MCPHERSON	OOH Last Day of the Month	49	46	43	44	39	44	47	56	54	59	54	55		49

ME MEADE	Removals	0	1	0	5	2	0	0	0	0	0	0	1	9	2
ME MEADE	Exits	0	0	0	2	0	0	0	0	0	0	0	1	3	2
ME MEADE	OOH Last Day of the Month	1	3	3	6	8	8	8	8	9	9	9	9		7
MC MITCHELL	Removals	0	1	0	4	0	0	1	0	2	0	0	1	9	2
MC MITCHELL	Exits	2	0	0	0	0	1	1	2	2	0	1	2	11	2
MC MITCHELL	OOH Last Day of the Month	12	13	13	17	17	13	15	13	13	13	12	11		14
MR MORRIS	Removals	2	0	1	2	0	0	0	0	0	0	0	0	5	2
MR MORRIS	Exits	1	0	0	1	1	1	0	0	0	2	0	0	6	1
MR MORRIS	OOH Last Day of the Month	11	11	12	13	12	11	11	11	12	10	10	10		11
MT MORTON	Removals	0	0	1	0	1	1	1	2	0	0	0	1	7	1
MT MORTON	Exits	2	1	0	1	2	0	0	0	0	0	0	1	7	1
MT MORTON	OOH Last Day of the Month	7	5	6	6	6	7	8	9	9	10	10	10		8
NS NESS	Removals	0	0	0	0	0	0	0	0	0	0	0	0	0	0
NS NESS	Exits	0	0	0	0	0	0	1	0	0	0	0	0	1	1
NS NESS	OOH Last Day of the Month	3	3	3	3	3	3	2	2	2	1	1	2		2
NT NORTON	Removals	0	0	2	1	0	0	1	2	1	5	1	0	13	2
NT NORTON	Exits	3	1	0	0	0	1	0	0	0	0	4	0	9	2
NT NORTON	OOH Last Day of the Month	14	13	15	16	16	15	16	19	20	25	22	21		18
OB OSBORNE	Removals	0	0	7	1	1	1	0	0	0	0	0	0	10	3
OB OSBORNE	Exits	0	0	0	3	1	0	0	0	0	0	1	1	6	2
OB OSBORNE	OOH Last Day of the Month	6	6	13	14	11	11	11	10	11	11	9	9		10
OT OTTAWA	Removals	0	1	1	0	0	1	1	0	0	0	0	0	4	1
OT OTTAWA	Exits	1	2	0	0	0	0	1	0	0	0	1	0	5	1
OT OTTAWA	OOH Last Day of the Month	10	9	10	10	10	11	11	11	11	11	10	10		10
PN PAWNEE	Removals	0	3	0	4	3	0	1	0	6	2	0	0	19	3
PN PAWNEE	Exits	1	3	2	2	1	0	0	1	2	2	0	5	19	2
PN PAWNEE	OOH Last Day of the Month	19	22	20	22	25	25	24	24	27	26	26	21		23
PL PHILLIPS	Removals	0	2	0	1	2	0	0	0	0	5	0	0	10	3
PL PHILLIPS	Exits	2	0	1	0	0	1	0	5	0	2	0	1	12	2
PL PHILLIPS	OOH Last Day of the Month	21	21	20	21	23	23	23	20	19	21	18	15		20
RA RAWLINS	Removals	2	0	0	0	0	0	0	0	0	1	1	0	4	1
RA RAWLINS	Exits	1	0	0	0	2	0	0	3	0	0	0	0	6	2
RA RAWLINS	OOH Last Day of the Month	7	6	6	6	4	4	4	1	1	2	3	3		4
RN RENO	Removals	27	25	10	11	8	14	10	10	3	9	6	12	145	12
RN RENO	Exits	7	23	19	16	20	11	12	10	24	13	14	18	187	16
RN RENO	OOH Last Day of the Month	347	358	350	344	331	332	324	324	305	304	296	290		325
RP REPUBLIC	Removals	0	0	0	0	0	0	1	0	0	0	1	1	3	1
RP REPUBLIC	Exits	0	0	0	2	0	0	0	0	0	0	0	0	2	2
RP REPUBLIC	OOH Last Day of the Month	6	6	6	4	4	4	5	5	5	5	6	7		5
RC RICE	Removals	0	0	7	5	0	0	0	0	1	7	0	1	21	4
RC RICE	Exits	1	3	2	3	0	0	0	0	0	0	2	1	12	2
RC RICE	OOH Last Day of the Month	34	29	34	41	39	39	37	37	38	45	43	47		39
RL RILEY	Removals	8	3	3	1	2	2	4	4	4	0	1	10	42	4
RL RILEY	Exits	5	2	9	2	3	5	1	2	0	1	1	4	35	3
RL RILEY	OOH Last Day of the Month	71	74	65	67	69	63	65	67	70	68	70	76		69
RO ROOKS	Removals	0	0	0	0	0	2	0	0	1	0	0	0	3	2
RO ROOKS	Exits	3	1	2	0	0	0	1	1	0	1	1	0	10	1
RO ROOKS	OOH Last Day of the Month	13	12	10	10	10	12	11	10	11	10	9	9		11

RH RUSH	Removals	1	0	2	0	0	0	0	0	0	0	0	0	3	2
RH RUSH	Exits	0	2	0	2	1	0	1	4	0	0	0	0	10	2
RH RUSH	OOH Last Day of the Month	15	13	15	13	12	12	12	7	7	7	7	7		11
RS RUSSELL	Removals	4	1	2	0	1	1	1	2	0	1	0	0	13	2
RS RUSSELL	Exits	4	2	2	0	8	1	0	1	0	0	3	2	23	3
RS RUSSELL	OOH Last Day of the Month	31	29	29	29	26	23	24	25	25	25	22	20		26
SA SALINE	Removals	10	5	2	15	16	9	8	5	4	0	3	5	82	7
SA SALINE	Exits	10	13	12	4	15	12	5	8	12	6	6	5	108	9
SA SALINE	OOH Last Day of the Month	188	185	174	188	196	188	194	193	186	181	176	181		186
SC SCOTT	Removals	0	0	0	0	0	0	0	5	1	0	2	8	3	
SC SCOTT	Exits	2	5	1	0	0	7	0	1	0	0	0	1	17	3
SC SCOTT	OOH Last Day of the Month	30	25	23	23	23	20	17	16	20	18	18	20		21
SW SEWARD	Removals	5	2	2	3	3	2	0	2	5	0	0	0	24	3
SW SEWARD	Exits	10	4	0	8	5	2	0	0	5	3	1	2	40	4
SW SEWARD	OOH Last Day of the Month	51	49	51	48	43	43	43	45	45	42	41	39		45
SD SHERIDAN	Removals	2	0	1	0	1	0	0	0	0	0	0	0	4	1
SD SHERIDAN	Exits	0	2	0	0	0	0	0	1	1	0	0	0	4	1
SD SHERIDAN	OOH Last Day of the Month	3	1	2	2	3	3	3	2	1	1	1	1		2
SH SHERMAN	Removals	1	0	2	3	0	3	0	1	0	1	0	0	11	2
SH SHERMAN	Exits	2	3	0	2	1	1	0	5	0	0	0	1	15	2
SH SHERMAN	OOH Last Day of the Month	19	15	16	17	17	19	18	14	12	13	13	12		15
SM SMITH	Removals	2	2	0	4	0	0	0	0	0	0	0	0	8	3
SM SMITH	Exits	2	1	0	1	2	0	4	2	1	0	0	0	13	2
SM SMITH	OOH Last Day of the Month	11	12	12	18	16	16	12	10	9	9	9	9		12
SF STAFFORD	Removals	2	3	0	0	0	1	0	3	0	1	0	0	10	2
SF STAFFORD	Exits	1	0	1	1	7	0	2	0	0	0	0	0	12	2
SF STAFFORD	OOH Last Day of the Month	22	24	24	24	17	17	16	19	21	22	23	22		21
ST STANTON	Removals	0	0	0	0	0	0	0	0	0	0	0	0	0	0
ST STANTON	Exits	4	0	0	0	0	0	0	0	0	0	0	0	4	4
ST STANTON	OOH Last Day of the Month	7	7	6	6	6	6	6	6	6	6	6	6		6
SV STEVENS	Removals	0	0	1	0	0	0	0	0	0	0	0	0	1	1
SV STEVENS	Exits	0	0	0	0	0	0	0	0	1	0	0	0	1	1
SV STEVENS	OOH Last Day of the Month	3	3	4	4	4	4	4	4	3	3	3	3		4
TH THOMAS	Removals	6	1	9	0	2	0	2	2	0	2	1	4	29	3
TH THOMAS	Exits	0	2	0	1	0	6	0	0	2	0	0	2	13	3
TH THOMAS	OOH Last Day of the Month	31	29	37	36	37	32	34	37	35	37	38	40		35
TR TREGO	Removals	0	1	2	0	1	1	0	2	1	0	0	1	9	1
TR TREGO	Exits	1	0	0	0	1	0	2	1	1	0	3	0	9	2
TR TREGO	OOH Last Day of the Month	6	7	9	9	9	10	8	10	9	9	6	7		8
WA WALLACE	Removals	0	0	0	0	0	0	0	0	0	0	0	0	0	0
WA WALLACE	Exits	1	0	0	0	0	0	0	0	0	0	0	0	1	1
WA WALLACE	OOH Last Day of the Month	5	4	4	6	5	5	4	4	4	4	4	4		4
WS WASHINGTON	Removals	5	0	2	0	0	0	0	0	0	0	0	1	8	3
WS WASHINGTON	Exits	0	0	0	0	2	0	0	0	0	2	0	0	4	2
WS WASHINGTON	OOH Last Day of the Month	7	7	7	9	7	7	7	7	7	5	5	6		7
WH WICHITA	Removals	0	1	0	0	0	1	0	0	0	0	0	0	2	1
WH WICHITA	Exits	0	0	1	0	0	2	0	0	0	0	0	0	3	2
WH WICHITA	OOH Last Day of the Month	3	3	3	3	3	2	1	2	2	2	2	2		2

BA BARBER	Removals	4	0	1	2	2	0	1	1	0	1	1	0	13	2
BA BARBER	Exits	0	3	0	2	0	3	0	0	3	0	1	0	12	2
BA BARBER	OOH Last Day of the Month	24	22	22	22	25	24	24	25	20	21	22	21		23
BU BUTLER	Removals	3	9	7	13	16	16	12	8	14	5	3	6	112	9
BU BUTLER	Exits	5	17	13	5	5	10	5	7	7	7	7	5	93	8
BU BUTLER	OOH Last Day of the Month	170	162	160	153	167	180	194	196	192	188	186	189		178
CL COWLEY	Removals	9	7	11	1	5	1	7	1	0	0	1	4	47	5
CL COWLEY	Exits	3	3	13	3	5	3	4	5	9	6	1	2	57	5
CL COWLEY	OOH Last Day of the Month	125	126	129	125	127	128	134	125	112	106	103	104		120
EK ELK	Removals	1	0	0	0	0	0	3	0	0	0	1	0	5	2
EK ELK	Exits	0	3	0	0	0	0	0	2	0	0	0	0	5	3
EK ELK	OOH Last Day of the Month	11	8	8	8	8	8	8	7	9	9	10	10		9
GW GREENWOOD	Removals	1	0	0	3	4	0	3	6	2	0	3	4	26	3
GW GREENWOOD	Exits	0	3	0	0	0	2	1	4	1	0	0	1	12	2
GW GREENWOOD	OOH Last Day of the Month	25	23	23	23	28	30	32	35	34	33	36	36		30
HP HARPER	Removals	1	0	6	2	3	0	0	1	0	5	0	4	22	3
HP HARPER	Exits	1	0	0	0	0	4	0	0	0	1	0	2	8	2
HP HARPER	OOH Last Day of the Month	26	26	31	26	28	28	27	27	27	32	32	34		29
KM KINGMAN	Removals	3	0	1	0	0	1	0	0	0	1	1	0	7	1
KM KINGMAN	Exits	0	0	1	1	4	3	2	0	1	0	0	1	13	2
KM KINGMAN	OOH Last Day of the Month	39	39	40	39	38	38	38	35	33	31	32	31		36
PR PRATT	Removals	1	2	0	1	1	1	6	0	0	0	3	3	18	2
PR PRATT	Exits	0	2	0	1	2	1	2	1	3	0	3	0	15	2
PR PRATT	OOH Last Day of the Month	27	27	27	26	28	25	30	29	27	22	23	30		27
SG SEDGWICK	Removals	44	70	81	49	41	36	61	30	41	18	31	36	538	45
SG SEDGWICK	Exits	50	74	33	47	75	35	43	50	65	50	39	31	592	49
SG SEDGWICK	OOH Last Day of the Month	1171	1181	1228	1243	1237	1232	1231	1219	1178	1151	1138	1140		1,196
SU SUMNER	Removals	2	5	10	2	0	1	10	4	1	0	0	0	35	4
SU SUMNER	Exits	9	5	2	5	1	4	0	5	2	2	0	3	38	4
SU SUMNER	Exits	78	70	77	78	76	74	72	76	75	76	78	75		75

**Data Sources:**

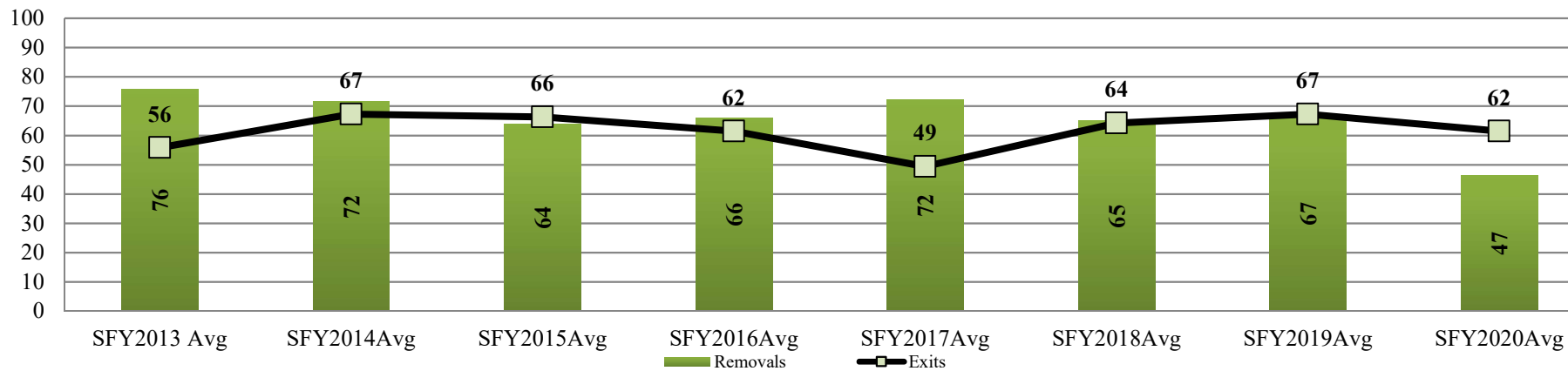
**Removals-** from FACTS

**Exits-** from FACTS

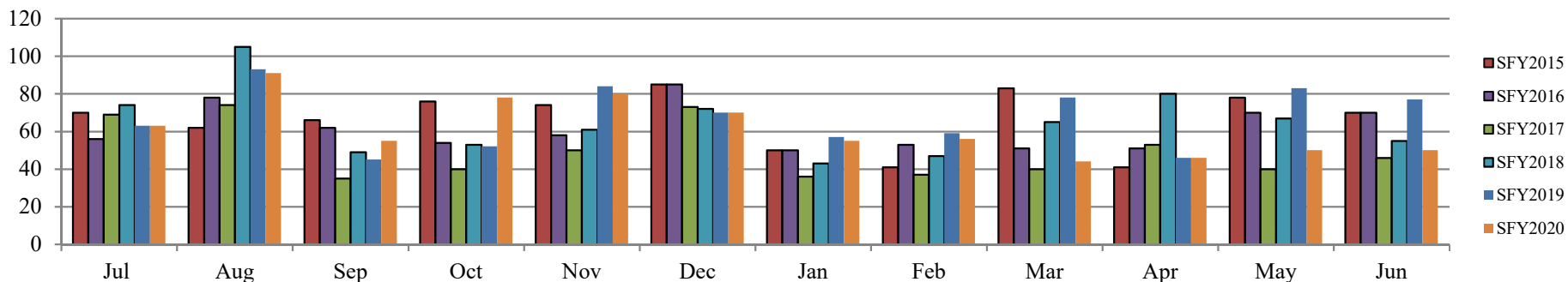
**OOH Last Day of the Month-** from FACTS



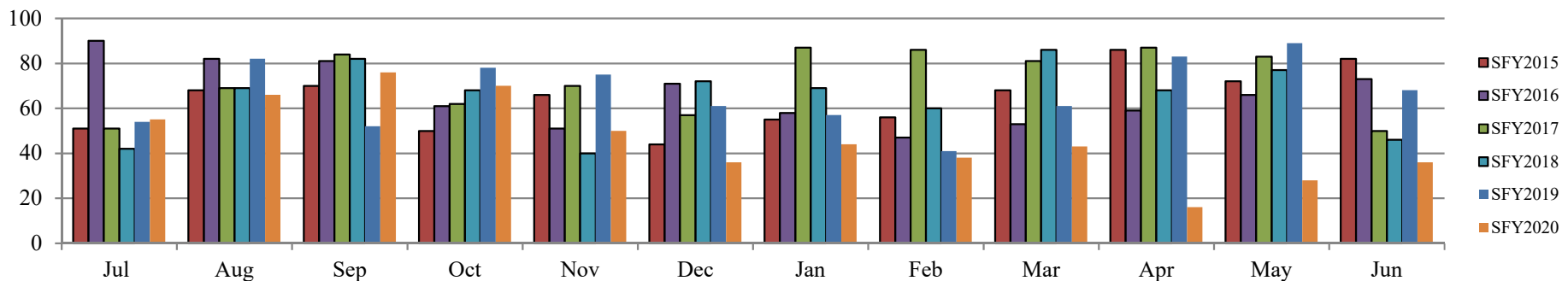
### Kansas City Region Fiscal Year Average Removals and Exits SFY2013-SFY2020



### Kansas City Region Monthly Exits SFY2015-SFY2020

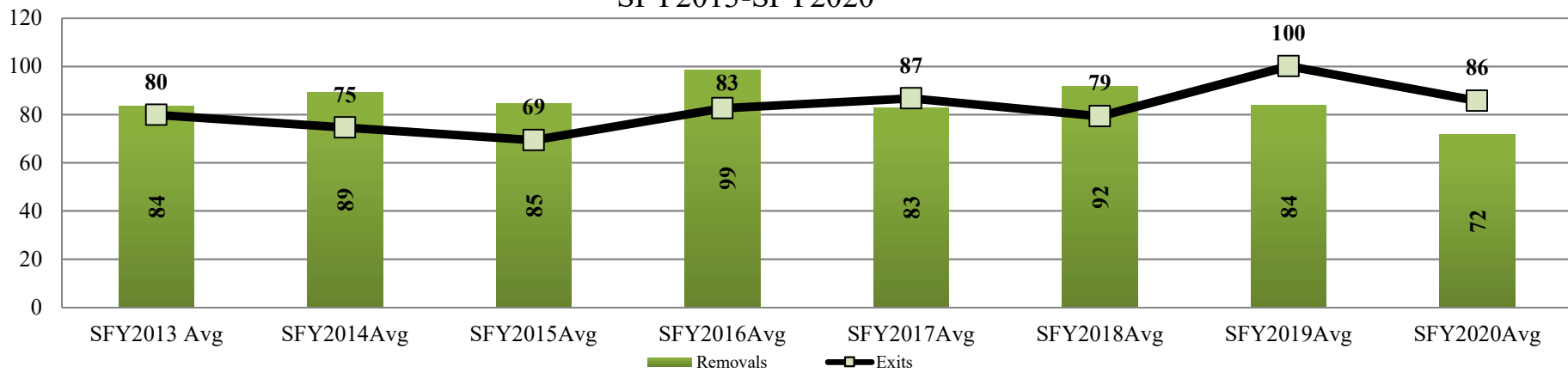


### Kansas City Region Monthly Removals SFY2015-SFY2020

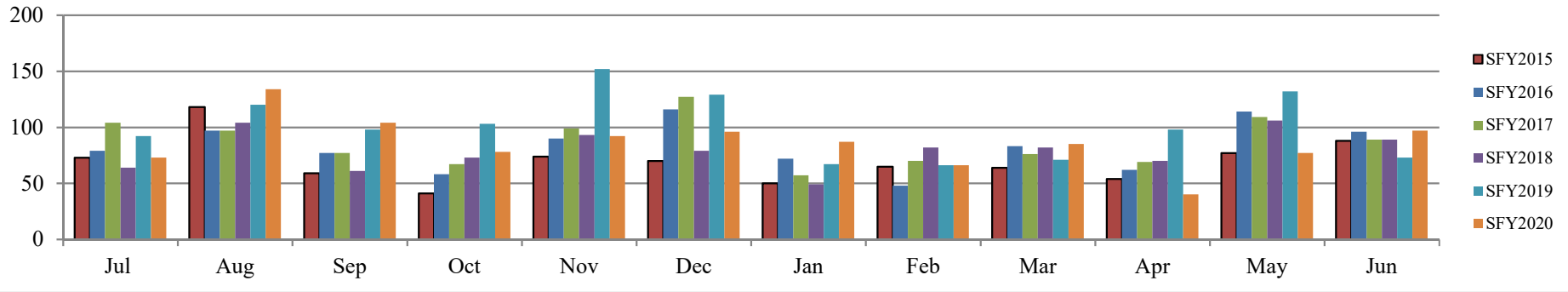


### East Region Fiscal Year Average Removals and Exits

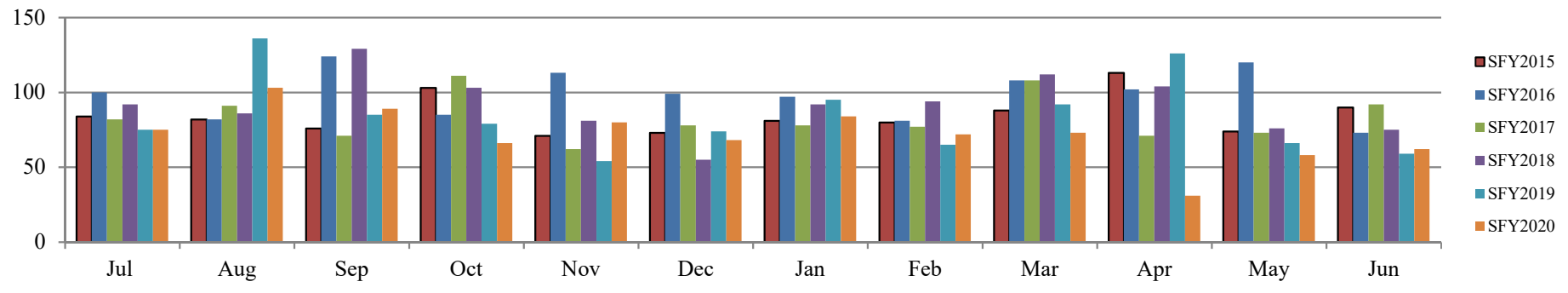
SFY2013-SFY2020



East Region Monthly Exits  
SFY2015-SFY2020



East Region Monthly Removals  
SFY2015-SFY2020



West Region Fiscal Year Average Removals and Exits  
SFY2013-SFY2020

180

