

# OVERVIEW OF CHILD CARE ASSISTANCE PROGRAM

---

DR. CARLA WHITESIDE-HICKS, DIRECTOR OF TEMPORARY ASSISTANCE FOR NEEDY FAMILIES (TANF) &  
EARLY CHILDHOOD PROGRAMS

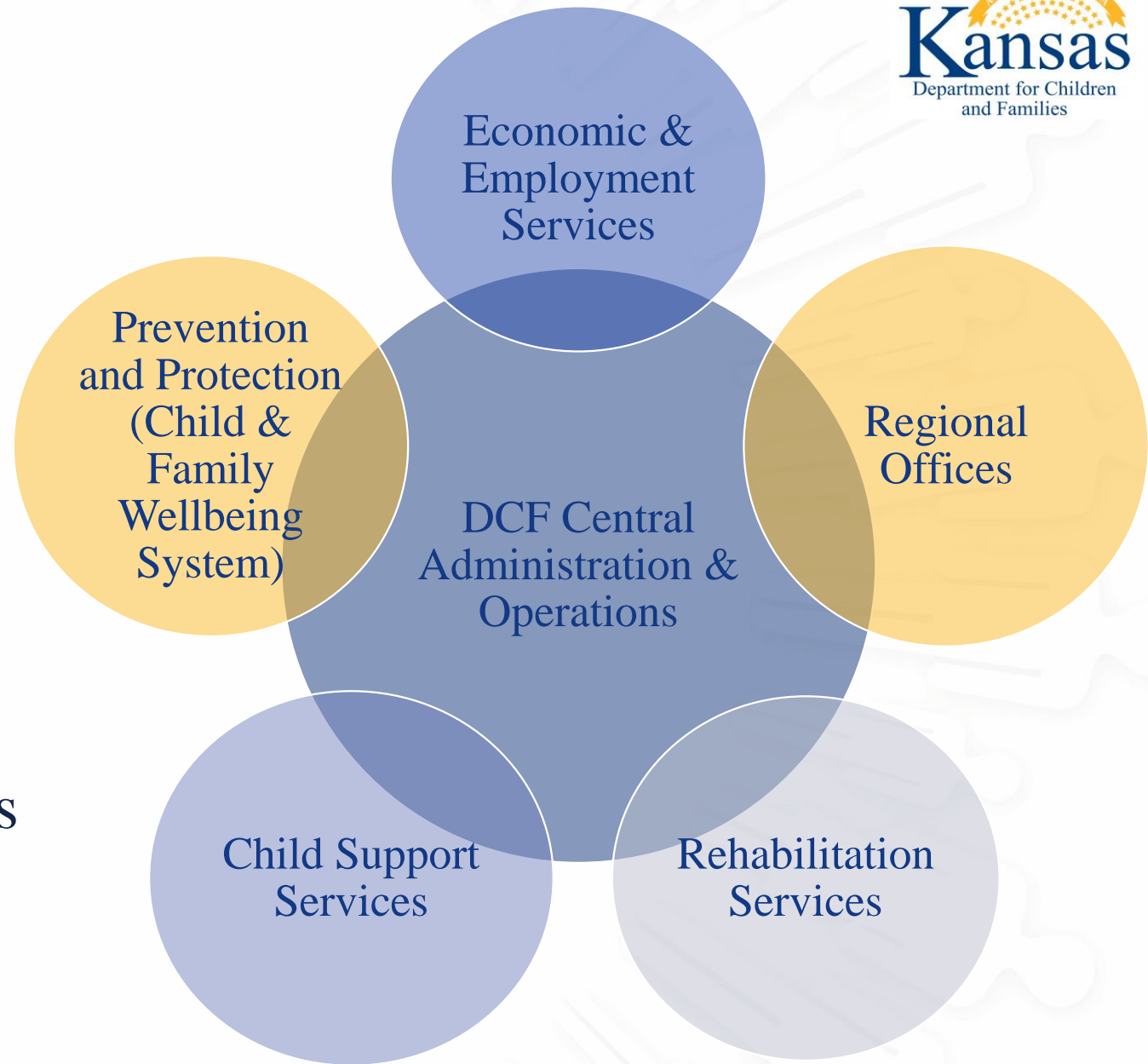
KANSAS DEPARTMENT FOR CHILDREN AND FAMILIES

HOUSE COMMITTEE ON WELFARE REFORM – JANUARY 24, 2023

# ORGANIZATION

## DCF Major Programs

- Programs collaborate for family and individual outcome achievement
- Programs are supported by core operations.
- Program and practice are carried out by teams in 36 service centers across 6 Regional Offices




# ECONOMIC & EMPLOYMENT SERVICES



Economic and Employment Services (EES) provides a variety of programs that can help families achieve self-sufficiency. These include:

- Cash assistance (Temporary Assistance for Needy Families)
- Food assistance (Supplemental Nutrition Assistance Program)
- Child Care assistance
- Employment assistance
- Energy assistance
- Emergency Water Assistance Program

Kansas Benefits Card Support

 1-800-831-5235

# CHILD CARE AND DEVELOPMENT BLOCK GRANT (CCDBG)



The Child Care and Development Block Grant Act (CCDBG) is a law that authorizes the Child Care and Development Fund (CCDF) program.

- CCDBG Act of 1990
  - Funding first authorized
- Personal Responsibility and Work Opportunity Reconciliation Act (PRWORA) of 1996
  - Required entitlement child care funds be transferred to a state or tribal Lead Agency
  - Child Care and Development Fund (CCDF) created
- CCDBG Act reauthorized in 2014

# ENHANCED STATUTORY PURPOSES

## (1/2)

1. To allow each State maximum flexibility in developing child care programs and policies that best suit the needs of children and parents within that State;
2. To promote parental choice to empower working parents to make their own decisions regarding the child care services that best suits their family's needs;
3. To encourage States to provide consumer education information to help parents make informed choices about child care **services and to promote involvement by parents and family members in the development of their children in child care settings;**
4. To assist States **in delivering high-quality, coordinated early childhood care and education services to maximize parents' options and support parents trying to achieve independence from public assistance;**

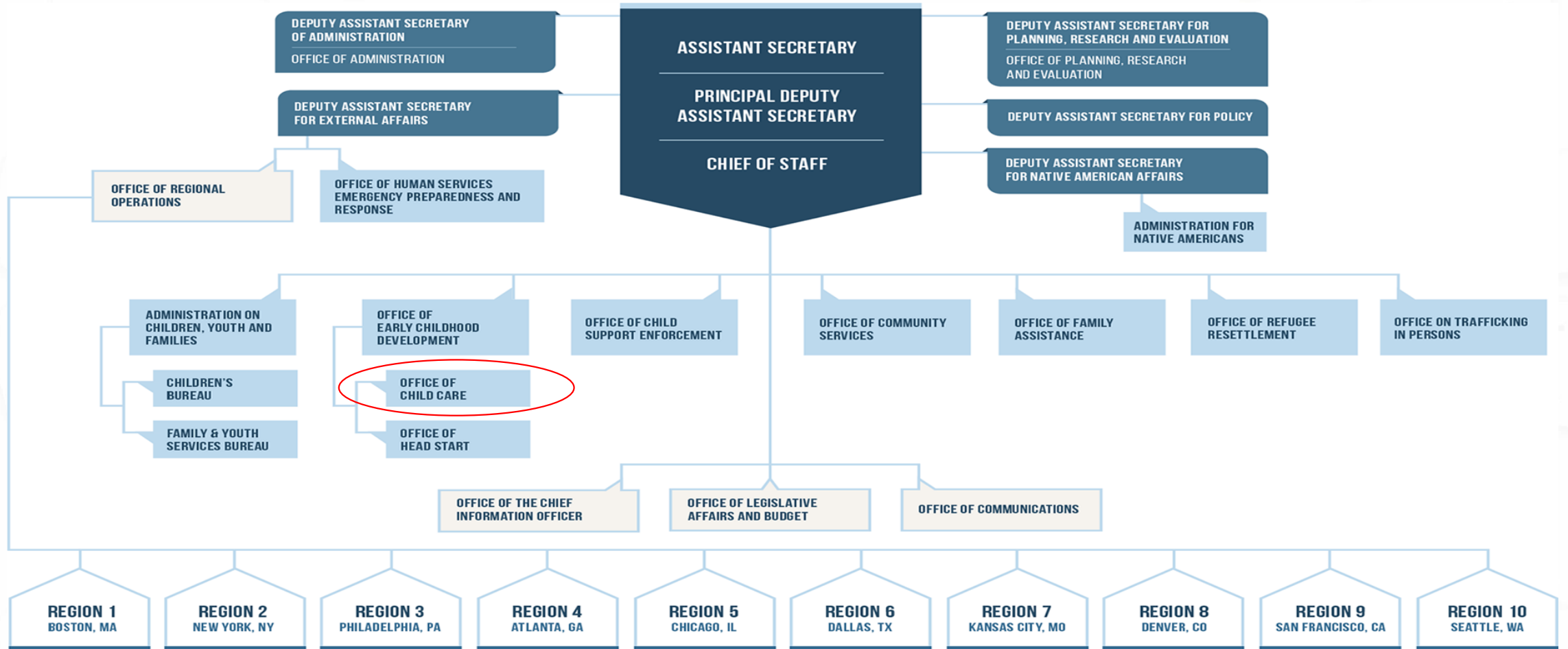
# ENHANCED STATUTORY PURPOSES

## (2/2)

5. To assist States **in improving the overall quality of child care services and programs by** implementing the health, safety, licensing, **training, and oversight** standards established in this subchapter and in State law (including State regulations);
6. **To improve child care and development of participating children; and**
7. **To increase the number and percentage of low-income children in high-quality child care settings.**

*(Reference: Section 658A(b) of the CCDBG Act of 1990)*

# ADMINISTRATION FOR CHILDREN AND FAMILIES (ACF) ORGANIZATIONAL STRUCTURE



# LEAD AGENCY RESPONSIBILITIES

The Lead Agency is responsible for administering the CCDF program and has the authority to do the following:

1. Administer and implement programs
2. Retain its overall responsibility for CCDF programs
3. Serve as the single point of contact for the administration of the CCDF program
4. Develop and administer the CCDF Plan
5. Monitor CCDF activities performed by other agencies



Source: Child Care and Development Fund, 45 C.F.R. § 98.10 (2016).



# CCDF ADMINISTRATOR RELATIONSHIPS & RESPONSIBILITIES



# CCDF ALLOCATION DEFINITIONS

1. Discretionary Funds
2. Mandatory Funds
3. Matching Funds
4. Maintenance of Effort Funds

# CCDF ALLOCATION DEFINITIONS

## 1) Discretionary Funds

- 100% federal funds allocated to states using a proportional formula based on three factors:
  - The young child factor: the state's share of children younger than age 5
  - The school lunch factor: the state's share of children receiving free or reduced-price lunch
  - The allotment proportion factor: the state's per capita income (averaged over three years)

# CCDF ALLOCATION DEFINITIONS

## 2) Mandatory Funds

- 100% federal funds allocated to each state based on the federal share of its funding for the now repealed Aid to Families with Dependent Children (AFDC)-linked child care programs (AFDC, JOBS Child Care, Transitional Child Care, and At-Risk Child Care)
- The share is based on federal funds received in FY 1994, FY 1995, or an average of funds received in FY 1992–1994, whichever is greater.

# CCDF ALLOCATION DEFINITIONS

## 3) Matching Funds

- The difference between the amount appropriated by Congress for a given year (under section 418(a)(3) of the Social Security Act), less amounts reserved for technical assistance, research, and tribal mandatory funds, and the amount of mandatory funds distributed to states.
- Matching funds are allocated to states on the basis of the number of children younger than age 13, compared with the national total of children younger than age 13. (The data are to be based on the best that are available for the second year preceding the allocation.)

# CCDF ALLOCATION DEFINITIONS

## 3) Matching Funds

- To receive these funds, a state must
  - provide matching funds at the current Medicaid match rate,
  - obligate the federal and state share of matching funds in the year in which the matching funds are awarded,
  - obligate all of its mandatory funds in the fiscal year in which the mandatory funds are awarded, and
  - obligate and expend its maintenance of effort (MOE) funds in the year in which the matching funds are awarded.

# CCDF ALLOCATION DEFINITIONS

## 4) Maintenance of Effort (MOE) Funds

- A state must continue to expend its own funds at the level at which it was matching the former AFDC-linked child care programs in FY 1994 or FY 1995, whichever was greater.

# FEDERAL REQUIREMENTS AND ALLOWABLE USES OF CCDF

1. Eligible families
2. Quality activities
3. Child care services
4. Administration



# FEDERAL REQUIREMENTS AND ALLOWABLE USES OF CCDF

## 1) Eligible families

- At least 70% of mandatory and federal/state share of matching funds must be spent on families who are:
  - Receiving TANF
  - Making efforts through work activities to transition off TANF
  - At risk of becoming dependent on TANF

# FEDERAL REQUIREMENTS AND ALLOWABLE USES OF CCDF

## 2) Quality activities

- Of the aggregate mandatory, matching, and discretionary funds expended by a state or territory:
  - At least 8% in Federal Fiscal Year (FFY) 2019, and 9% of funds in FFY 2020 and beyond shall be used for quality child care activities
  - An additional 3% shall be used for quality activities for infants and toddlers
  - These are minimum levels and Lead Agencies may reserve more dollars for quality activities

# FEDERAL REQUIREMENTS AND ALLOWABLE USES OF CCDF

## 3) Child care services

- From the remainder of the discretionary allotment (after setting aside administrative, quality, and infant/toddler expenditures), states/territories must spend at least 70% to fund direct child care services:
  - Of all remaining funds after meeting the spending requirements above, a substantial portion of funds must be used to support direct child care services for low-income families who are working or in training or education

# FEDERAL REQUIREMENTS AND ALLOWABLE USES OF CCDF

## 4) Administration

- Lead Agencies may spend up to 5% of the aggregate funds (Mandatory, Matching and Discretionary) from each fiscal year's allotment on administrative costs, including:
  - Program administration (e.g. salaries and benefits)
  - Travel costs incurred for official business
  - Administrative Services (e.g. accounting services)
  - Indirect costs (i.e. costs other than direct services, like rent and overhead)
    - Other costs such as rental equipment, utilities and office supplies

# ACCESS TO CHILD CARE SUBSIDY



## Application Submission and Eligibility Determination

- Online
- Face-to-Face
- Fax
- Email
- Drop-Off
- Postal Mail
- Helping Agencies
- Amazon Connect / Phone

# CHILD CARE ASSISTANCE



## Eligible Families

- Families receiving Temporary Assistance for Needy Families (TANF) or Food Assistance and enrolled in an eligible work program
- Low-income, working families
- Families participating in Kansas Early Head Start/Child Care Partnership program
- Foster care caregivers who are employed
- Families participating in qualifying education or training activities
- Teen parents completing high school or a GED program
- Families with a documented social service need (per KSA 39-709(b)(16)(B)(i))

# CHILD CARE ASSISTANCE

## General Eligibility

- Child from birth through the last month of the eligibility period in which the child's 13<sup>th</sup> birthday has been reached.
- Child age 13 through 18 if the child is physically or mentally incapable of caring for him or herself
- Cooperation with Child Support Services (per KSA 39-709) (b)(10)
- Proof of U.S. citizenship for each child receiving subsidy

# CHILD CARE ASSISTANCE

## General Eligibility

- Countable income at or below 250% of the Federal Poverty Level (state guideline)
- Countable income at or below 85% of the State Median Income (federal guideline)
- Maximum allowable non-exempt resources of all persons included in the childcare case cannot exceed \$10,000
- Parent/caregiver must select an eligible childcare provider
  - Licensed by KDHE and enrolled as a DCF childcare provider
  - Out of home relative



# VERIFYING CHILD CARE ASSISTANCE ELIGIBILITY



## Verifications

- Identity of each adult in the Mandatory Filing Unit
- Gross non-exempt income for each adult in the Mandatory Filing Unit
- Resources
- U.S. citizenship / non-citizenship status of each child for whom subsidy is being requested
- Date of birth of each child for whom subsidy is being requested

# ELIGIBILITY INTERFACES

## Interfaces

- Lexis Nexis
- The Work Number/TALX
- Social Security System
- Public Assistance Reporting Information System (PARIS)
- Systematic Alien Verification for Entitlements (SAVE)
- Kansas Lottery
- Kansas Department of Labor

# ELIGIBILITY INTERFACES

## Interfaces

- Kansas Department of Commerce
- Kansas Department of Corrections
- Kansas Child Support Services
- Kansas Eligibility and Enforcement System (KEES)
- Kansas Adult Supervised Population Electronic Repository (KASPER)
- National Directory of New Hires (NDNH)
- Electronic Disqualified Recipient System (eDRS)

# CHILD CARE SUBSIDY ISSUANCE

## Electronic Benefit Transfer (EBT) Kansas Benefits card

- Assistance is available to the family on the first day of every month
- Families pay the DCF enrolled provider

# TYPICAL CHILD CARE ASSISTANCE HOUSEHOLD

- Type of Household
  - 94% female-headed
  - 52% one child
  - 31% two children
  - 17% three or more children
- Age and Education
  - 33 years average age
  - 65% high school diploma or GED
  - 5% college degree
  - 10% other credential
- Children
  - 39% pre-school age
  - 33% school age
  - 18% toddlers
  - 10% infants
- Eligibility
  - 83% income eligible (low income employed)
  - 12% foster care
  - 5% TANF cases

# CHILD CARE ASSISTANCE COMPLIANCE

## Federal reporting

- Monthly status calls with Region VII Office of Child Care
- ACF-118: CCDF State Plan (submitted triennially)
  - Describes how the Lead Agency administers CCDF programs in conformance with legislative regulations
- ACF-218: Quality Progress Report (submitted annually)
  - Captures the Lead Agency's progress on how CCDF quality funds were expended
- ACF-696: Financial Report (submitted quarterly)
  - Reports estimates and expenditures for the Mandatory Fund, the Matching Fund, and the Discretionary Fund

# CHILD CARE ASSISTANCE COMPLIANCE



## Federal reporting

- ACF-800: Aggregate Data Report (submitted annually)
  - Provides unduplicated counts of children and families served through the CCDF
- ACF-801: Case-Level Data Report (submitted quarterly)
  - Provides case-level data on the families and children served through the CCDF
- ACF-901: American Rescue Plan (ARP) Stabilization Grants Provider-Level Data (submitted quarterly)
  - Allows Office of Child Care to collect and report critical information about the numbers of and characteristics for child care providers receiving stabilization grant awards, including whether funds have been distributed equitably and are reaching historically underserved communities.

# CHILD CARE ASSISTANCE COMPLIANCE

## Federal reporting

- Error rate reports to measure, calculate and report improper payments and identify strategies for reducing future improper payments
  - SDAP: Sampling Decisions, Assurances, and Fieldwork Preparation Plan
  - ACF-403: Record Review Worksheet
  - ACF-404: State Improper Payments Report
  - ACF-405: State Improper Payments Corrective Action Plan



# CHILD CARE ASSISTANCE COMPLIANCE



# CHILD CARE ASSISTANCE COMPLIANCE

- CCDF Federal Onsite Monitoring (conducted triennially)
  - Ensure compliance with CCDF Regulations and the approved CCDF Plan
  - Identify technical assistance needs to meet CCDF requirements
  - Identify promising practices to inform continuous quality improvement
- 2021 monitoring visit findings
  - Posting provider inspection reports
  - Health and safety standard for training
  - Monitoring/enforcement of CCDF health and safety requirements
  - Posting aggregate data on serious injuries, deaths and substantiated abuse
  - Twelve-month eligibility

# CHILD CARE ASSISTANCE COMPLIANCE

- CCDF State Plan (submitted triennially)
  - Define CCDF Leadership and Coordination with Relevant Systems and Funding Sources
  - Promote Family Engagement Through Outreach and Consumer Education
  - Provide Stable Child Care Financial Assistance to Families
  - Ensure Equal Access to Child Care for Low-Income Children
  - Establish Standards and Monitoring Processes to Ensure the Health and Safety of Child Care Settings
  - Recruit and Retain a Qualified and Effective Child Care Workforce
  - Support Continuous Quality Improvement
  - Ensure Grantee Program Integrity and Accountability

# CHILD CARE ASSISTANCE COMPLIANCE

- CCDF State Plan (FFY 2022-2024) Corrective Action Plan
  - Posting provider inspection reports
  - Monitoring/enforcement of CCDF health and safety requirements
  - Posting aggregate data on serious injuries, deaths and substantiated abuse
  - Twelve-month eligibility
  - Enrollment and outreach for families experiencing homelessness
  - Equal access (Narrow Cost Analysis)

# CHILD CARE ASSISTANCE EFFECTIVENESS



PERFORMANCE MEASURE	FY 2019	FY 2020	FY 2021	FY 2022
Employed families receiving Child Care Assistance whose earnings increase at the next review	63.7%	74.0%	66.2%	66.7%
Number of collaborative activities and resources made available to Head Start and Early Head Start grantees and communities to enhance services to children and families	24	25	49	50
Percent of Kansas Early Head Start child care partnerships that provide quality early learning environments based on a recorded score of 5 or higher on the Thelma Harris Rating Scale	96%	96%	95%	97%

# STATE MATCH CALCULATION AND CCDF AWARD ALLOCATIONS



ALLOCATION	FY2023 GBR	FY2024 GBR
CIF	\$ 5,033,679	\$ 5,033,679
SGF	\$ 10,429,859	\$ 11,900,789
TOTAL STATE FUNDS	\$ 15,463,538	\$ 16,934,468
STATE MOE*	\$ (6,673,024)	\$ (6,673,024)
<i>STATE FUNDS AVAILABLE TO MATCH FEDERAL FUNDS</i>	<i>\$ 8,790,514</i>	<i>\$ 10,261,444</i>

ALLOCATION	FY2023	FY2024
FEDERAL DISCRETIONARY	\$ 67,164,197	\$ 67,164,197
FEDERAL MANDATORY	\$ 9,811,721	\$ 9,811,721
FEDERAL MATCHING	\$ 20,726,279	\$ 20,726,279
STATE MOE	\$ 6,673,024	\$ 6,673,024
STATE MATCH	\$ 8,790,514	\$ 10,261,444
<b>TOTAL</b>	<b>\$ 113,165,735</b>	<b>\$ 114,636,665</b>

- \*STATE MOE
  - Amount remains constant year to year
  - Expenditures can also be used to meet TANF MOE
  - MOE amounts are met through state expenses for child care subsidy
- amounts of the federal dollars represent the actual/expected award total

# CCDF SPENDING IN KANSAS

- Administration
- Assistance
- Quality
- Stabilization
- Transfer

# CCDF EXPENDITURES

Expenditures	FY22 Actual All Funds	FY22 Actual State Funds (1)	FY23 GBR All Funds	FY23 GBR State Funds	FY24 GBR All Funds	FY24 GBR State Funds
Agency Administration	1,562,000	-	1,576,712	-	1,543,283	-
Contracted Services (2)	76,420	-	56,065	-	55,508	-
Direct Client Eligibility and Services	2,937,096	-	2,820,455	-	2,747,462	-
Direct Services	63,647,580	12,463,538	68,161,122	15,463,538	72,007,153	16,934,468
Early Head Start	7,355,980	-	7,506,797	-	7,506,797	-
ITS	1,250,522	-	1,518,222	-	1,377,868	-
Pandemic Quality	59,871,296	-	111,352,979	-	5,027,382	-
Pandemic Stabilization	210,180,556	-	2,802,266	-	-	-
Program Administration	1,222,630	-	1,272,902	-	1,229,325	-
Quality Services	4,195,634	-	4,954,241	-	5,050,995	-
Transfer	1,791,654	-	4,253,245	-	4,253,245	-
Transfer - Pandemic	10,998,967	-	20,000,000	-	-	-
<b>Total</b>	<b>365,090,335</b>	<b>12,463,538</b>	<b>226,275,006</b>	<b>15,463,538</b>	<b>100,799,018</b>	<b>16,934,468</b>

(1) - State Funds Include Children's Initiative Funds totaling \$5,033,679.

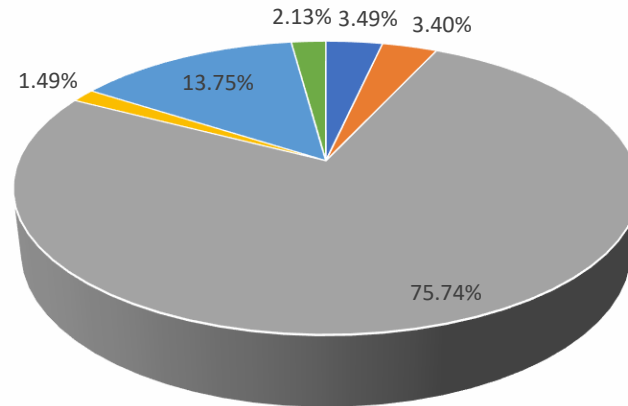
(2) - Contracted Services include the EBT Contractor and Employment Verification Contractor



# CCDF EXPENDITURES

DISTRIBUTION WITHOUT PANDEMIC SERVICES	FY22 EXPENSES	FY22 % OF TOTAL	FY23 EXPENSES	FY23 % OF TOTAL	FY24 EXPENSES	FY24 % OF TOTAL
Service Delivery	2,937,096	3.49%	2,820,455	3.06%	2,747,462	2.87%
Administration	2,861,050	3.40%	2,905,679	3.15%	2,828,116	2.95%
Assistance	63,647,580	75.74%	68,161,122	73.99%	72,007,153	75.19%
ITS	1,250,522	1.49%	1,518,222	1.65%	1,377,868	1.44%
Quality Service	11,551,614	13.75%	12,461,038	13.53%	12,557,792	13.11%
Transfer	1,791,654	2.13%	4,253,245	4.62%	4,253,245	4.44%

FY22 % of Total Expenses



■ Service Delivery ■ Administration ■ Assistance ■ ITS ■ Quality Service ■ Transfer ■

# FTE RELATED TO CHILD CARE SERVICES



Regional FTE	FY 22 Approved			FY 23 Request			FY 24 Request		
	FTE	Non-FTE	Total	FTE	Non-FTE	Total	FTE	Non-FTE	Total
Program Code 29200									
EES Eligibility Staff	635	60	695	633	56	689	633	48	681

Based on time and effort reporting 9.26% of the time (funding) relates to child care.  
 This percentage of the FTE is funded with CCDF Discretionary funds which require no state match.

Other Dedicated Child Care Program FTE in EES Admin		FY 22 Approved			FY 23 Request			FY 24 Request		
		FTE	Non-FTE	Total	FTE	Non-FTE	Total	FTE	Non-FTE	Total
Program Code 25161	CCDF Administration	6	-	6	7	-	7	7	-	7
Program Code 25165	CC Elig for FC Kids	8	-	8	6	-	6	6	-	6
<b>TOTAL</b>		<b>14</b>	<b>-</b>	<b>14</b>	<b>13</b>	<b>-</b>	<b>13</b>	<b>13</b>	<b>-</b>	<b>13</b>

These positions in EES Administration are dedicated to and fully funded by CCDF Discretionary funds:

# CHILD CARE FACILITIES

LICENSE TYPE	LICENSED FACILITIES	LICENSED AND DCF ENROLLED FACILITIES
DAY CARE HOME	1,890	621
GROUP DAY CARE HOME	1,302	636
PRESCHOOL	117	9
CHILD CARE CENTER	632	433
HEAD START	47	-
SCHOOL AGE PROGRAM	347	268
SCHOOL AGE DROP IN PROGRAM	57	-
OUTDOOR SUMMER CAMP PROGRAM	27	18
<b>TOTAL</b>	<b>4,419</b>	<b>1,985</b>

# CHILD CARE SUBSIDY CASELOAD AND EXPENDITURES



	TANF CHILDREN	EMPLOYED CHILDREN	HEROES CHILDREN	TOTAL CHILDREN	TANF CHILDREN COSTS	EMPLOYED CHILDREN COSTS	HEROES CHILDREN COSTS	TOTAL COSTS
Jul-21	661	9,540	1,368	11,569	\$ 291,100	\$ 4,302,819	\$ 799,707	\$ 5,393,626
Aug-21	630	9,526	1,539	11,695	\$ 269,328	\$ 4,231,516	\$ 900,044	\$ 5,400,888
Sep-21	584	9,403	1,503	11,490	\$ 218,882	\$ 3,771,413	\$ 813,464	\$ 4,803,759
Oct-21	596	9,241	1,567	11,404	\$ 228,610	\$ 3,655,865	\$ 884,484	\$ 4,768,959
Nov-21	602	9,114	1,676	11,392	\$ 239,097	\$ 3,812,328	\$ 992,396	\$ 5,043,821
Dec-21	583	9,174	1,661	11,418	\$ 228,830	\$ 3,813,405	\$ 927,340	\$ 4,969,575
Jan-22	668	9,030	1,786	11,484	\$ 260,517	\$ 3,733,478	\$ 1,011,410	\$ 5,005,405
Feb-22	647	9,172	1,866	11,685	\$ 246,857	\$ 3,647,671	\$ 1,037,539	\$ 4,932,067
Mar-22	634	9,144	2,011	11,789	\$ 268,288	\$ 3,965,832	\$ 1,185,849	\$ 5,419,969
Apr-22	655	9,342	2,038	12,035	\$ 260,852	\$ 3,964,420	\$ 1,168,486	\$ 5,393,758
May-22	664	9,543	2,136	12,343	\$ 299,619	\$ 4,320,723	\$ 1,322,688	\$ 5,943,030
Jun-22	617	9,703	2,172	12,492	\$ 329,301	\$ 4,785,091	\$ 1,458,330	\$ 6,572,722
Jul-22	645	9,594	2,182	12,421	\$ 325,306	\$ 4,593,510	\$ 1,447,710	\$ 6,366,526
Aug-22	647	9,732	2,159	12,538	\$ 324,060	\$ 4,780,721	\$ 1,446,192	\$ 6,550,973
Sep-22	668	9,760	2,089	12,517	\$ 301,038	\$ 4,229,398	\$ 1,261,837	\$ 5,792,273
Oct-22	694	10,055	1,988	12,737	\$ 291,345	\$ 4,290,364	\$ 1,216,733	\$ 5,798,442
Nov-22	642	10,017	1,803	12,462	\$ 311,799	\$ 4,410,925	\$ 1,135,753	\$ 5,858,477
Dec-22	594	10,073	1,623	12,290	\$ 292,888	\$ 4,650,779	\$ 989,125	\$ 5,932,792

# CHILD CARE RATES

- Market Rate Survey
  - Mandated by CCDF Final Rule
- Narrow Cost Analysis
- Child Care Assistance
  - Current provider rates
  - Family share
- Family out of pocket expense

# CHILD CARE ASSISTANCE EXAMPLES



- FAMILY COMPOSITION: 1 ADULT, 1 CHILD (AGE: 6 MONTHS)
- NEED FOR CARE: 215 HOURS/MONTH (10 HOURS/DAY, 5 DAYS/WEEK)
- PROVIDER TYPE: LICENSED HOME

	<b>CRAWFORD COUNTY</b>	<b>JOHNSON COUNTY</b>
FAMILY’S MONTHLY INCOME	\$1,700	\$2,650
PROVIDER’S HOURLY SUBSIDY RATE	\$2.79	\$4.33
RATE PERCENTILE (2020 MRS)	>95 <sup>TH</sup>	85 <sup>TH</sup>
FAMILY’S GROSS MONTHLY SUBSIDY	\$599.85	\$930.95
FAMILY SHARE	\$46	\$73
FAMILY’S NET MONTHLY ASSISTANCE	\$553.85	\$857.95
ACTUAL MONTHLY PROVIDER FEE	\$619.20	\$930.95
PROVIDER RATE PERCENTILE (2020 MRS)	>95 <sup>TH</sup>	85 <sup>TH</sup>
FAMILY’S MONTHLY OUT OF POCKET	\$65.35	\$73

# CCDF PANDEMIC RELIEF



LEGISLATION	DATE ENACTED	AWARD AMOUNT	OBLIGATION DATE	LIQUIDATION DATE	LIQUIDATION AMOUNT
Coronavirus Aid, Relief, and Economic Security (CARES) Act	03/27/2020	\$ 30,771,514	09/30/2022	09/30/2023	\$ 30,771,514
Coronavirus Response and Relief Supplemental Appropriations (CRRSA) Act	12/27/2020	\$ 89,170,627	09/30/2022	09/30/2023	\$ 64,847,709
American Rescue Plan (ARP) Stabilization	03/11/2021	\$ 213,897,405	09/30/2022	09/30/2023	\$ 165,967,106
American Rescue Plan (ARP) Discretionary	03/11/2021	\$ 133,736,063	09/30/2023	09/30/2024	\$ 10,126,002
<b>TOTAL</b>		<b>\$ 467,575,609</b>			<b>\$ 271,712,331</b>

# CARES ALLOWABLE FUND USE

- Assistance to essential workers without regard to income
- Continued payment and assistance to providers
- Salaries and wages for providers
- Assistance to eligible providers not receiving CCDBG assistance prior to COVID-19 public health emergency
- Reimbursement for COVID-related expenses that have already been incurred



# CRRSA ALLOWABLE FUND USE

- Assistance to essential workers without regard to income
- Continued payment and assistance to providers
- Salaries and wages for providers
- Assistance to eligible providers not receiving CCDBG assistance prior to COVID-19 public health emergency
- Reimbursement for COVID-related expenses that have already been incurred
- Technical assistance to providers for COVID-19-related needs
- Stability supports for child care sector

# ARP STABILIZATION ALLOWABLE FUND USE

- Assistance to essential workers without regard to income
- Continued payment and assistance to providers
- Salaries and wages for providers
- Assistance to eligible providers not receiving CCDBG assistance prior to COVID-19 public health emergency
- Reimbursement for COVID-related expenses that have already been incurred
- Technical assistance to providers for COVID-19-related needs
- Stability supports for child care sector

# ARP DISCRETIONARY ALLOWABLE FUND USE

- Assistance to essential workers without regard to income
- Personnel costs
- Rent/mortgage, utilities, facility maintenance or improvements, or insurance
- Personal protective equipment, cleaning and sanitization of supplies and services, or training and professional development related to health and safety practices
- Goods and services necessary to maintain or resume child care services
- Mental health supports for children and employees

# PANDEMIC RELIEF SPENDING

- Family Support
- Direct Provider Supports
- Start-Up Supports
- Quality Improvement Supports
- Workforce Supports
- General Systems Improvement and Support

# PANDEMIC RELIEF SPENDING

Family Support: increasing access to licensed, subsidized, and quality child care with a focus on support families in need

- Family Needs and Preferences Study (CRRSA)
- HERO Relief Program (CARES)
- HERO Relief Program Expansion (CRRSA)

# PANDEMIC RELIEF SPENDING

Direct Provider Supports: assisting child care providers in achieving or recovering financial and operational viability

- HERO Relief Provider Funding (CARES)
- Sustainability Grants Round 1 (CRRSA)
- Sustainability Grants Round 2 (ARP Stabilization)
- Sustainability Grants Round 3 (ARP Stabilization)

# PANDEMIC RELIEF SPENDING

Start-Up Supports: increasing the workforce and capacity in child care

- Child Care Health Consultant Network with Impact Grants (CARES)
- Child Care Health Consultant Expansion (ARP Discretionary)
- Background Checks and Licensing Fees (ARP Stabilization)
- Community Partnerships (CRRSA)

# PANDEMIC RELIEF SPENDING

Quality Improvement Supports: promoting and recognizing quality child care

- Program Administration Support (CRSSA)
- Child Care Quality Improvement and Support (ARP Discretionary)
- Early Childhood Education (ECE) Shared Resources (CRRSA)



# PANDEMIC RELIEF SPENDING

Workforce Supports: recruiting, professional development (education, training, and technical assistance), and retaining a stable workforce

- Professional Development and Scholarships (CRRSA)
- Workforce Registry (CRRSA)
- Mental Health Technical Assistance (CRRSA)
- Career Pathway (ARP Discretionary)
- Supporting Children with Disability Technical Assistance (CRRSA)
- Child Care Workforce Appreciation Bonuses (ARP Discretionary)

# PANDEMIC RELIEF SPENDING

General Systems Improvement and Support: improving flexibility of existing DCF and KS ECE system infrastructure to meet evolving child care needs

- Communications and Outreach (CRRSA)
- Backbone Support (CRRSA)

# QUESTIONS

---