



FY 2023 Removals, Exits and Out of Home Summary (FACTS)

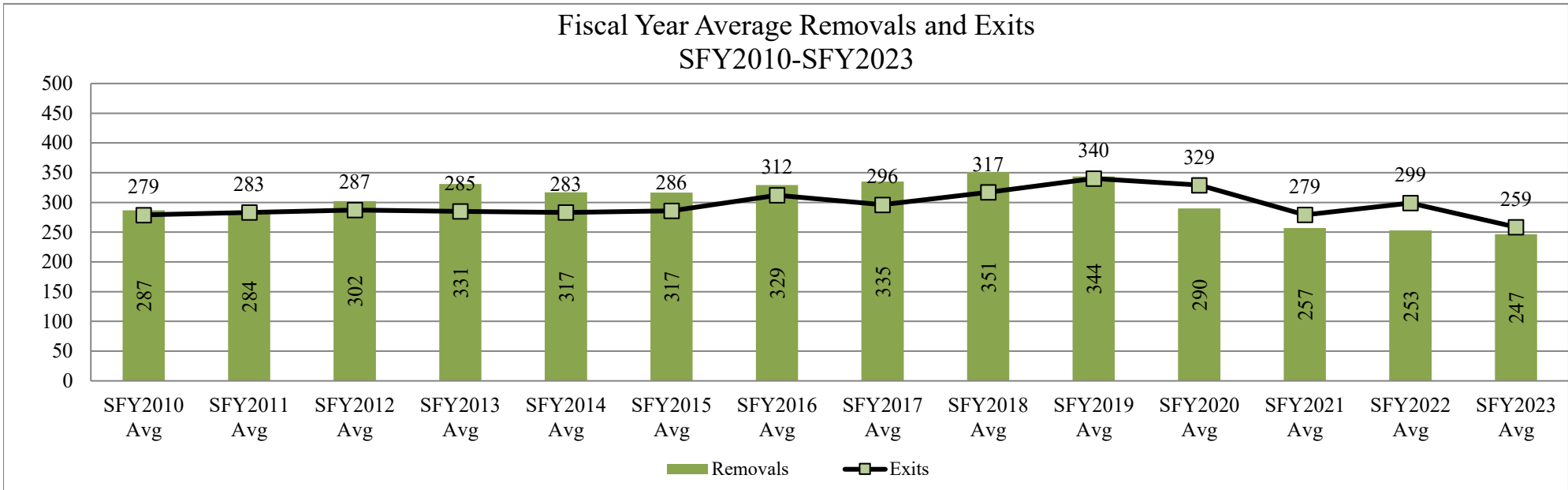
This report contains information on the number children removed into foster care in a given month, the number of children who exited foster care placement outside of their home in a given month, and the number of children who are in a foster care placement outside of their home (OOH) on the last day of each month. Information is provided by DCF Region and County.

7/28/2023

By DCF Region	Type of Information	Jul	Aug	Sep	Oct	Nov	Dec	Jan	Feb	Mar	Apr	May	Jun	Fiscal year Total	Fiscal year Average
Kansas City Region	Removals	37	47	45	22	24	24	40	22	26	29	37	39	392	33
Kansas City Region	Exits	40	66	47	48	56	47	31	41	38	41	35	41	531	44
Kansas City Region	OOH Last Day of the Month	1256	1237	1239	1210	1182	1161	1166	1137	1127	1117	1123	1115		1,173
Northeast Region	Removals	26	41	21	22	19	15	32	49	44	63	39	47	418	35
Northeast Region	Exits	22	24	44	31	41	28	24	22	27	20	37	31	351	29
Northeast Region	OOH Last Day of the Month	889	908	883	880	871	849	843	872	895	946	956	965		896
Northwest Region	Removals	31	28	55	26	31	33	36	23	28	27	32	30	380	32
Northwest Region	Exits	32	44	30	24	48	50	22	23	35	32	49	37	426	36
Northwest Region	OOH Last Day of the Month	640	620	645	651	626	610	622	613	617	615	601	593		621
Southeast Region	Removals	27	41	39	35	32	12	30	36	52	36	22	34	396	33
Southeast Region	Exits	44	37	26	22	48	42	35	23	38	23	51	27	416	35
Southeast Region	OOH Last Day of the Month	731	739	751	768	752	721	711	727	736	758	735	738		739
Southwest Region	Removals	54	58	60	61	46	18	29	33	25	22	33	44	483	40
Southwest Region	Exits	39	71	34	30	62	62	33	44	44	31	62	45	557	46
Southwest Region	OOH Last Day of the Month	1012	1001	1027	1056	1045	1007	991	986	967	953	928	924		991
Wichita Region	Removals	87	129	99	82	49	78	73	55	82	38	59	60	891	74
Wichita Region	Exits	61	100	55	42	90	68	54	72	79	81	66	54	822	69
Wichita Region	OOH Last Day of the Month	1712	1745	1783	1824	1798	1798	1814	1814	1817	1787	1783	1789		1,789
State	Removals	262	344	319	248	201	180	240	218	257	215	222	254	2,960	247
State	Exits	238	342	236	197	345	297	199	225	261	228	300	235	3,103	259
State	OOH Last Day of the Month	6240	6250	6328	6389	6274	6146	6147	6149	6159	6176	6126	6124		6,209

*Beginning in SFY2015 Discharges were replaced by Exits from Out of Home Placements.

Fiscal Year Average Removals and Exits SFY2010-SFY2023



Data Sources:

Removals- from FACTS

Exits- from FACTS

OOH Last Day of the Month- from FACTS

Information By County grouped in DCF Regions

County	Type of Information	Jul	Aug	Sep	Oct	Nov	Dec	Jan	Feb	Mar	Apr	May	Jun	Fiscal year Total	Fiscal year Average
AL ALLEN	Removals	2	3	2	3	6	3	3	3	2	2	2	1	32	3
AL ALLEN	Exits	3	3	1	0	4	1	1	0	5	5	5	1	29	3
AL ALLEN	OOH Last Day of the Month	43	43	43	46	44	46	51	53	51	48	49	48		47
AN ANDERSON	Removals	0	1	0	0	0	1	0	1	2	0	0	0	5	1
AN ANDERSON	Exits	1	1	0	0	1	0	1	2	2	0	0	0	8	1
AN ANDERSON	OOH Last Day of the Month	11	11	11	11	10	11	10	9	8	7	7	9		10
AT ATCHISON	Removals	0	1	5	0	4	0	0	0	3	6	1	0	20	3
AT ATCHISON	Exits	1	3	0	3	0	4	2	2	2	5	0	3	25	3
AT ATCHISON	OOH Last Day of the Month	56	55	60	58	61	56	52	49	52	54	54	51		55
BA BARBER	Removals	0	0	0	1	0	0	5	3	0	0	1	0	10	3
BA BARBER	Exits	0	3	0	0	0	1	0	3	0	0	1	2	10	2
BA BARBER	OOH Last Day of the Month	20	17	17	18	18	17	22	23	22	22	22	20		20
BB BOURBON	Removals	3	2	1	1	5	0	4	2	4	3	2	3	30	3
BB BOURBON	Exits	7	3	3	2	3	7	5	1	0	0	4	0	35	4
BB BOURBON	OOH Last Day of the Month	52	51	49	48	51	42	40	42	46	49	50	50		48
BR BROWN	Removals	2	5	0	3	3	0	7	9	1	7	7	3	47	5
BR BROWN	Exits	1	4	6	1	0	0	7	5	2	0	6	5	37	4
BR BROWN	OOH Last Day of the Month	65	66	59	61	62	62	64	70	69	76	77	75		67
BT BARTON	Removals	5	6	3	8	3	4	1	4	3	0	0	1	38	4
BT BARTON	Exits	6	0	3	2	5	6	2	5	2	2	6	4	43	4
BT BARTON	OOH Last Day of the Month	66	71	71	78	75	74	67	65	65	63	58	56		67

BU BUTLER	Removals	12	15	6	9	5	8	7	7	5	7	4	7	92	8
BU BUTLER	Exits	6	6	5	4	9	8	6	9	17	11	10	10	101	8
BU BUTLER	OOH Last Day of the Month	208	217	219	221	217	217	217	214	201	196	191	191		209
CA CLARK	Removals	0	0	0	0	0	0	0	0	0	0	0	0	0	0
CA CLARK	Exits	0	0	0	0	0	0	0	0	0	0	0	0	0	0
CA CLARK	OOH Last Day of the Month	2	2	2	2	2	2	2	2	2	2	2	2		2
CD CLOUD	Removals	1	0	5	1	2	3	8	1	1	0	0	0	22	3
CD CLOUD	Exits	5	5	0	0	0	3	3	4	3	2	2	3	30	3
CD CLOUD	OOH Last Day of the Month	32	28	33	34	35	35	40	37	35	36	36	28		34
CF COFFEY	Removals	4	3	1	0	0	1	1	2	0	0	0	0	12	2
CF COFFEY	Exits	0	2	0	0	0	0	0	0	0	1	0	2	5	2
CF COFFEY	OOH Last Day of the Month	8	11	11	11	12	13	14	15	15	15	15	13		13
CK CHEROKEE	Removals	6	2	4	2	1	1	1	7	1	11	1	6	43	4
CK CHEROKEE	Exits	1	2	1	7	1	7	4	3	2	1	1	4	34	3
CK CHEROKEE	OOH Last Day of the Month	39	39	42	38	38	34	33	37	36	46	46	48		40
CL COWLEY	Removals	3	3	7	3	3	1	3	2	5	7	4	0	41	4
CL COWLEY	Exits	4	4	3	0	5	4	1	4	2	5	4	0	36	4
CL COWLEY	OOH Last Day of the Month	90	89	94	97	93	88	87	90	93	95	97	94		92
CM COMANCHE	Removals	0	0	2	1	2	0	0	0	0	0	0	0	5	2
CM COMANCHE	Exits	0	0	0	0	0	0	0	0	0	0	0	0	0	0
CM COMANCHE	OOH Last Day of the Month	2	2	4	5	7	7	7	7	7	7	7	7		6
CN CHEYENNE	Removals	0	1	0	0	0	0	0	0	0	0	0	0	1	1
CN CHEYENNE	Exits	0	0	0	0	0	0	0	0	0	0	0	1	1	1
CN CHEYENNE	OOH Last Day of the Month	6	7	7	7	7	7	7	7	7	7	7	6		7
CQ CHAUTAUQUA	Removals	0	1	0	2	0	0	0	0	0	1	2	0	6	2
CQ CHAUTAUQUA	Exits	0	0	0	0	0	1	0	0	2	2	6	0	11	3
CQ CHAUTAUQUA	OOH Last Day of the Month	12	13	13	15	15	14	14	14	12	11	11	7		13
CR CRAWFORD	Removals	3	11	9	9	5	3	6	8	14	2	7	2	79	7
CR CRAWFORD	Exits	4	6	7	1	10	3	12	4	2	3	6	4	62	5
CR CRAWFORD	OOH Last Day of the Month	138	142	145	153	145	149	135	140	150	155	156	153		147
CS CHASE	Removals	0	0	0	0	0	0	0	0	0	0	0	0	0	0
CS CHASE	Exits	0	1	0	0	1	0	0	0	0	1	1	0	4	1
CS CHASE	OOH Last Day of the Month	2	2	2	2	2	2	2	2	2	3	2	2		2
CY CLAY	Removals	1	0	1	1	0	0	0	0	0	2	0	0	5	1
CY CLAY	Exits	1	0	0	0	9	0	0	0	0	1	1	0	12	3
CY CLAY	OOH Last Day of the Month	17	17	18	19	11	11	11	11	11	12	11	11		13
DC DECATUR	Removals	1	0	0	0	0	1	0	0	0	1	0	1	4	1
DC DECATUR	Exits	2	0	1	0	1	0	3	0	0	0	0	0	7	2
DC DECATUR	OOH Last Day of the Month	11	11	10	10	9	10	7	7	7	8	8	9		9
DG DOUGLAS	Removals	6	5	2	2	9	10	3	6	4	1	9	1	58	5
DG DOUGLAS	Exits	11	8	3	5	6	10	3	4	2	2	5	4	63	5
DG DOUGLAS	OOH Last Day of the Month	141	135	135	132	137	140	141	143	146	145	148	147		141
DK DICKINSON	Removals	6	2	8	1	6	3	6	0	2	0	1	1	36	4
DK DICKINSON	Exits	0	2	4	1	3	1	1	0	10	4	1	4	31	3
DK DICKINSON	OOH Last Day of the Month	33	33	37	37	41	43	47	45	37	33	33	30		37
DP DONIPHAN	Removals	0	2	0	0	1	1	0	0	1	4	0	0	9	2
DP DONIPHAN	Exits	0	0	2	3	1	3	0	0	0	1	0	5	15	3
DP DONIPHAN	OOH Last Day of the Month	35	37	35	34	33	30	30	30	31	34	34	29		33

HM HAMILTON	Removals	0	0	0	0	0	0	0	0	1	1	0	0	2	1
HM HAMILTON	Exits	0	1	0	0	0	0	0	0	0	0	0	0	1	1
HM HAMILTON	OOH Last Day of the Month	8	7	7	7	7	7	7	7	8	9	9	9		8
HP HARPER	Removals	0	2	2	1	0	0	0	5	0	1	2	0	13	2
HP HARPER	Exits	0	5	1	0	0	0	3	1	2	0	0	1	13	2
HP HARPER	OOH Last Day of the Month	21	17	18	19	19	19	17	21	20	21	23	22		20
HS HASKELL	Removals	0	4	1	1	0	0	0	0	0	0	0	0	6	2
HS HASKELL	Exits	0	1	0	1	0	0	0	6	0	0	0	4	12	3
HS HASKELL	OOH Last Day of the Month	6	9	10	10	10	10	10	6	5	6	6	1		7
HV HARVEY	Removals	2	0	14	7	1	2	2	0	0	1	0	0	29	4
HV HARVEY	Exits	2	4	0	2	6	5	1	3	0	0	5	0	28	4
HV HARVEY	OOH Last Day of the Month	51	47	61	67	63	65	58	55	55	59	53	51		57
JA JACKSON	Removals	0	0	0	0	0	0	0	4	1	6	1	2	14	3
JA JACKSON	Exits	0	3	0	0	0	2	0	2	3	0	1	0	11	2
JA JACKSON	OOH Last Day of the Month	33	30	30	30	30	28	27	30	28	34	34	35		31
JF JEFFERSON	Removals	1	2	2	0	0	0	0	4	0	0	0	5	14	3
JF JEFFERSON	Exits	1	0	2	0	0	5	0	0	1	1	1	1	12	2
JF JEFFERSON	OOH Last Day of the Month	27	29	29	29	29	24	23	27	26	25	24	28		27
JO JOHNSON	Removals	8	14	18	11	10	4	24	11	8	13	9	15	145	12
JO JOHNSON	Exits	18	37	31	21	35	14	17	13	15	18	14	18	251	21
JO JOHNSON	OOH Last Day of the Month	500	473	463	449	428	420	427	416	407	403	401	393		432
JW JEWELL	Removals	0	0	0	0	0	6	0	0	0	0	0	1	7	4
JW JEWELL	Exits	1	0	0	0	0	0	0	0	0	0	1	3	5	2
JW JEWELL	OOH Last Day of the Month	6	6	6	6	6	12	12	12	12	12	11	9		9
KE KEARNY	Removals	0	0	2	2	0	0	0	0	0	0	0	0	4	2
KE KEARNY	Exits	0	0	0	0	1	2	2	0	0	0	1	0	6	2
KE KEARNY	OOH Last Day of the Month	19	18	20	22	21	18	16	16	16	16	15	15		18
KM KINGMAN	Removals	1	2	0	2	0	0	0	0	2	0	0	2	9	2
KM KINGMAN	Exits	0	0	0	0	1	0	0	1	2	0	1	3	8	2
KM KINGMAN	OOH Last Day of the Month	20	21	22	24	24	23	23	22	24	24	23	24		23
KW KIOWA	Removals	3	0	0	0	0	0	0	0	0	0	0	2	5	3
KW KIOWA	Exits	0	0	2	0	0	0	0	0	0	0	1	0	3	2
KW KIOWA	OOH Last Day of the Month	5	5	3	3	3	4	4	4	4	4	3	5		4
LB LABETTE	Removals	2	4	6	2	1	0	3	2	11	7	0	3	41	4
LB LABETTE	Exits	9	1	1	2	5	2	1	0	5	2	2	2	32	3
LB LABETTE	OOH Last Day of the Month	51	55	60	60	56	52	56	58	63	69	67	69		60
LC LINCOLN	Removals	0	0	0	0	0	0	0	0	0	0	0	0	0	0
LC LINCOLN	Exits	1	0	0	0	0	0	0	0	2	0	0	0	3	2
LC LINCOLN	OOH Last Day of the Month	5	5	5	5	5	5	7	7	5	5	5	5		5
LE LANE	Removals	0	2	0	1	0	0	0	0	0	0	0	0	3	2
LE LANE	Exits	0	1	0	0	0	2	2	0	0	0	1	0	6	2
LE LANE	OOH Last Day of the Month	11	12	12	13	13	11	9	9	9	9	8	8		10
LG LOGAN	Removals	0	2	2	0	0	0	0	0	0	0	1	0	5	2
LG LOGAN	Exits	0	1	0	0	0	1	0	1	0	0	0	0	3	1
LG LOGAN	OOH Last Day of the Month	7	8	10	10	10	9	9	8	8	8	9	9		9
LN LINN	Removals	0	0	0	1	2	0	0	5	3	0	1	1	13	2
LN LINN	Exits	1	6	0	1	5	1	0	1	1	0	1	0	17	2
LN LINN	OOH Last Day of the Month	24	20	20	20	18	17	15	19	21	21	21	22		20

LV LEAVENWORTH	Removals	4	12	11	3	0	3	4	0	5	2	5	12	61	6
LV LEAVENWORTH	Exits	4	5	3	7	4	8	2	4	7	2	4	10	60	5
LV LEAVENWORTH	OOH Last Day of the Month	181	188	197	191	186	184	182	180	178	179	182	181		184
LY LYON	Removals	6	4	3	5	6	3	1	9	2	2	1	4	46	4
LY LYON	Exits	1	13	3	2	7	7	3	3	8	1	3	2	53	4
LY LYON	OOH Last Day of the Month	124	113	115	116	115	113	115	120	114	111	109	112		115
MC MITCHELL	Removals	0	0	0	0	0	0	2	2	1	3	2	0	10	2
MC MITCHELL	Exits	0	2	0	0	4	1	0	0	0	0	0	1	8	2
MC MITCHELL	OOH Last Day of the Month	13	10	10	10	6	5	7	9	10	10	12	14		10
ME MEADE	Removals	0	0	0	0	0	0	0	0	0	0	0	0	0	0
ME MEADE	Exits	0	0	2	0	0	2	0	1	0	0	0	0	5	2
ME MEADE	OOH Last Day of the Month	9	9	7	7	7	5	3	2	2	2	2	2		5
MG MONTGOMERY	Removals	0	4	2	2	4	2	4	0	5	4	1	6	34	3
MG MONTGOMERY	Exits	8	3	3	2	6	4	4	4	2	0	5	9	50	5
MG MONTGOMERY	OOH Last Day of the Month	115	116	115	115	118	116	116	112	115	119	111	108		115
MI MIAMI	Removals	1	4	0	0	0	0	1	0	0	2	1	0	9	2
MI MIAMI	Exits	0	2	4	0	1	2	1	2	2	0	4	1	19	2
MI MIAMI	OOH Last Day of the Month	37	41	36	36	34	32	32	30	28	30	27	26		32
MN MARION	Removals	1	2	0	0	0	0	0	0	0	0	0	2	5	2
MN MARION	Exits	1	2	1	0	1	1	0	0	2	1	2	2	13	1
MN MARION	OOH Last Day of the Month	18	19	18	18	18	14	17	17	15	14	13	13		16
MP MCPHERSON	Removals	7	3	3	3	1	0	3	5	3	0	0	1	29	3
MP MCPHERSON	Exits	2	1	1	2	3	4	4	2	0	0	2	4	25	3
MP MCPHERSON	OOH Last Day of the Month	50	52	54	55	53	49	48	51	54	54	51	49		52
MR MORRIS	Removals	1	0	0	1	0	0	0	0	0	0	0	0	2	1
MR MORRIS	Exits	0	0	3	1	1	0	0	0	1	4	3	0	13	2
MR MORRIS	OOH Last Day of the Month	14	14	11	11	10	10	10	10	9	6	3	2		9
MS MARSHALL	Removals	0	2	1	0	1	3	2	1	1	2	2	0	15	2
MS MARSHALL	Exits	1	2	1	1	2	4	0	2	0	0	0	2	15	2
MS MARSHALL	OOH Last Day of the Month	19	18	19	17	17	13	14	16	17	19	22	21		18
MT MORTON	Removals	0	0	1	0	0	0	0	0	0	0	0	0	1	1
MT MORTON	Exits	0	1	0	0	0	0	1	0	0	0	0	0	2	1
MT MORTON	OOH Last Day of the Month	6	5	6	6	6	6	5	4	4	4	4	4		5
NM NEMAHA	Removals	4	2	0	1	0	2	0	4	0	0	0	0	13	3
NM NEMAHA	Exits	1	1	3	0	3	0	1	1	0	1	1	2	14	2
NM NEMAHA	OOH Last Day of the Month	27	28	25	26	24	25	24	24	30	29	28	26		26
NO NEOSHO	Removals	2	0	2	9	7	0	1	2	5	1	2	3	34	3
NO NEOSHO	Exits	1	3	1	3	1	6	0	2	0	4	1	1	23	2
NO NEOSHO	OOH Last Day of the Month	52	49	51	57	62	54	54	54	57	56	57	59		55
NS NESS	Removals	0	0	0	0	0	0	0	0	0	0	0	0	0	0
NS NESS	Exits	0	0	0	0	0	0	0	0	0	0	0	0	0	0
NS NESS	OOH Last Day of the Month	0	0	0	0	0	0	0	0	0	0	0	0		0
NT NORTON	Removals	0	3	1	0	2	3	0	1	1	0	0	0	11	2
NT NORTON	Exits	0	0	0	1	1	1	2	3	3	2	0	0	13	2
NT NORTON	OOH Last Day of the Month	15	17	18	17	18	20	21	18	17	16	16	14		17
OB OSBORNE	Removals	0	0	0	0	1	0	0	0	0	0	1	0	2	1
OB OSBORNE	Exits	0	0	1	0	0	1	0	0	0	0	0	0	2	1
OB OSBORNE	OOH Last Day of the Month	3	3	2	2	3	2	2	2	2	2	3	3		2

OS OSAGE	Removals	1	3	0	2	0	0	2	2	2	0	0	0	12	2
OS OSAGE	Exits	2	2	0	1	5	1	0	0	6	0	3	1	21	3
OS OSAGE	OOH Last Day of the Month	25	26	26	28	26	25	27	29	25	25	22	22		26
OT OTTAWA	Removals	1	1	0	1	0	0	0	3	2	0	2	3	13	2
OT OTTAWA	Exits	0	0	0	0	0	0	1	3	0	1	0	1	6	2
OT OTTAWA	OOH Last Day of the Month	12	13	12	15	15	15	13	13	15	14	16	18		14
PL PHILLIPS	Removals	0	0	1	0	0	0	2	0	0	1	0	0	4	1
PL PHILLIPS	Exits	0	1	0	0	1	0	0	0	2	1	2	0	7	1
PL PHILLIPS	OOH Last Day of the Month	14	14	14	14	13	13	15	15	13	13	11	11		13
PN PAWNEE	Removals	0	2	0	12	1	0	0	0	1	0	1	1	18	3
PN PAWNEE	Exits	1	3	0	4	5	3	0	0	1	0	0	0	17	3
PN PAWNEE	OOH Last Day of the Month	17	16	16	24	20	21	20	20	20	20	21	22		20
PR PRATT	Removals	1	0	4	0	0	0	1	0	1	0	0	1	8	2
PR PRATT	Exits	2	5	0	0	2	6	0	0	0	2	2	6	25	4
PR PRATT	OOH Last Day of the Month	47	42	46	46	44	39	39	39	39	39	36	30		41
PT POTTAWATOMIE	Removals	3	0	2	0	3	0	5	2	4	2	1	1	23	3
PT POTTAWATOMIE	Exits	1	0	3	7	2	4	0	0	3	1	1	2	24	3
PT POTTAWATOMIE	OOH Last Day of the Month	35	37	34	27	29	27	26	28	29	31	30	29		30
RA RAWLINS	Removals	0	0	0	1	0	0	0	0	0	0	0	0	1	1
RA RAWLINS	Exits	0	0	0	0	0	0	0	0	1	0	0	0	1	1
RA RAWLINS	OOH Last Day of the Month	3	3	3	4	4	4	4	4	3	3	3	3		3
RC RICE	Removals	2	1	0	2	1	0	0	4	0	0	0	2	12	2
RC RICE	Exits	1	5	0	0	6	2	0	0	1	2	1	3	21	3
RC RICE	OOH Last Day of the Month	35	31	31	33	30	27	27	31	30	28	27	26		30
RH RUSH	Removals	5	5	0	0	0	0	1	0	0	0	0	0	11	4
RH RUSH	Exits	0	0	0	7	0	0	0	0	2	0	0	0	9	5
RH RUSH	OOH Last Day of the Month	11	16	16	7	7	7	9	10	9	9	9	9		10
RL RILEY	Removals	10	5	6	2	4	3	3	5	5	7	1	3	54	5
RL RILEY	Exits	6	3	5	7	1	8	1	1	1	2	11	5	51	4
RL RILEY	OOH Last Day of the Month	84	84	87	82	79	75	77	79	89	93	84	81		83
RN RENO	Removals	7	15	14	15	6	5	14	4	9	6	13	8	116	10
RN RENO	Exits	12	14	4	2	10	5	5	6	9	4	14	12	97	8
RN RENO	OOH Last Day of the Month	215	218	227	239	236	237	243	246	246	243	243	239		236
RO ROOKS	Removals	0	2	1	1	0	0	1	0	0	0	1	0	6	1
RO ROOKS	Exits	0	2	1	2	0	1	3	0	0	1	0	0	10	2
RO ROOKS	OOH Last Day of the Month	10	10	10	11	11	10	9	8	8	7	8	8		9
RP REPUBLIC	Removals	0	0	4	0	0	0	0	0	0	0	0	0	4	4
RP REPUBLIC	Exits	0	0	0	0	1	1	0	0	0	0	0	0	2	1
RP REPUBLIC	OOH Last Day of the Month	2	2	6	6	6	4	4	4	4	4	4	4		4
RS RUSSELL	Removals	0	0	5	0	5	0	2	0	0	0	3	1	16	3
RS RUSSELL	Exits	1	0	0	1	5	2	0	0	1	0	1	0	11	2
RS RUSSELL	OOH Last Day of the Month	11	11	16	16	11	9	11	14	14	14	16	17		13
SA SALINE	Removals	3	2	8	5	4	3	6	3	8	6	2	4	54	5
SA SALINE	Exits	6	1	8	4	11	6	2	3	2	4	9	0	56	5
SA SALINE	OOH Last Day of the Month	99	99	99	101	95	92	94	94	100	101	95	100		97
SC SCOTT	Removals	0	4	1	0	1	1	2	0	0	1	0	1	11	2
SC SCOTT	Exits	2	4	0	2	1	1	4	0	0	0	1	0	15	2
SC SCOTT	OOH Last Day of the Month	29	31	31	29	29	29	27	27	27	28	26	27		28

SD SHERIDAN	Removals	0	0	0	0	0	0	0	0	0	0	0	0	0	0
SD SHERIDAN	Exits	0	0	2	0	1	0	0	1	0	0	0	0	4	1
SD SHERIDAN	OOH Last Day of the Month	5	5	3	3	2	2	2	1	1	1	1	1		2
SF STAFFORD	Removals	2	0	0	0	1	0	0	0	0	2	0	1	6	2
SF STAFFORD	Exits	0	1	1	0	0	0	3	0	2	0	1	2	10	2
SF STAFFORD	OOH Last Day of the Month	17	16	16	16	17	17	13	13	11	13	12	11		14
SG SEDGWICK	Removals	62	97	75	59	36	65	51	34	60	22	39	45	645	54
SG SEDGWICK	Exits	45	74	39	35	70	48	40	45	52	55	43	32	578	48
SG SEDGWICK	OOH Last Day of the Month	1204	1232	1261	1287	1271	1282	1289	1288	1298	1275	1272	1286		1,270
SH SHERMAN	Removals	4	1	0	1	0	1	0	0	0	0	0	3	10	2
SH SHERMAN	Exits	1	3	0	0	0	1	0	1	0	0	0	0	6	2
SH SHERMAN	OOH Last Day of the Month	13	12	12	13	17	17	15	10	12	12	12	15		13
SM SMITH	Removals	0	2	1	0	1	0	0	0	0	1	0	0	5	1
SM SMITH	Exits	0	0	0	0	0	1	4	0	3	1	0	0	9	2
SM SMITH	OOH Last Day of the Month	7	9	10	10	11	10	6	5	2	3	3	3		7
SN SHAWNEE	Removals	16	28	16	18	11	9	18	25	33	42	28	36	280	23
SN SHAWNEE	Exits	17	14	26	19	32	10	16	12	18	16	27	12	219	18
SN SHAWNEE	OOH Last Day of the Month	637	652	642	646	637	630	625	637	652	686	695	712		654
ST STANTON	Removals	0	0	1	0	0	0	0	0	0	0	0	0	1	1
ST STANTON	Exits	0	0	0	0	0	0	0	0	0	0	2	2	4	2
ST STANTON	OOH Last Day of the Month	6	6	6	6	6	6	6	6	6	6	5	3		6
SU SUMNER	Removals	8	9	3	3	3	3	5	1	4	0	7	1	47	4
SU SUMNER	Exits	4	3	6	3	3	1	4	6	2	6	5	0	43	4
SU SUMNER	OOH Last Day of the Month	70	77	72	74	75	76	79	74	75	71	73	73		74
SV STEVENS	Removals	0	0	0	0	0	0	0	0	0	0	1	0	1	1
SV STEVENS	Exits	0	0	0	0	0	0	0	0	2	0	0	0	2	2
SV STEVENS	OOH Last Day of the Month	2	2	2	2	2	2	2	2	0	0	1	1		2
SW SEWARD	Removals	7	3	0	2	5	0	1	0	0	1	0	6	25	4
SW SEWARD	Exits	0	0	9	1	0	1	0	2	1	1	0	1	16	2
SW SEWARD	OOH Last Day of the Month	30	33	24	25	30	29	30	28	27	27	27	31		28
TH THOMAS	Removals	0	2	0	1	2	1	0	0	2	1	0	8	17	2
TH THOMAS	Exits	0	3	0	1	1	2	2	0	1	0	2	0	12	2
TH THOMAS	OOH Last Day of the Month	32	30	30	31	30	28	26	29	30	31	30	37		30
TR TREGO	Removals	0	0	0	1	0	0	0	0	0	0	0	0	1	1
TR TREGO	Exits	2	2	0	2	0	0	0	0	0	0	0	0	6	2
TR TREGO	OOH Last Day of the Month	5	3	3	2	2	2	1	1	1	1	1	1		2
WA WALLACE	Removals	0	0	0	0	0	0	0	0	0	0	0	1	1	1
WA WALLACE	Exits	0	0	0	0	0	0	0	0	0	0	0	0	0	0
WA WALLACE	OOH Last Day of the Month	3	3	3	3	3	3	3	0	0	0	0	1		3
WB WABAUNSEE	Removals	0	0	0	0	0	0	0	0	3	0	0	0	3	3
WB WABAUNSEE	Exits	0	0	1	0	1	0	0	0	0	0	0	2	4	1
WB WABAUNSEE	OOH Last Day of the Month	11	11	10	10	10	10	10	10	13	12	12	10		11
WH WICHITA	Removals	0	0	0	0	2	0	0	0	0	0	0	0	2	2
WH WICHITA	Exits	0	0	0	0	0	0	0	0	0	1	0	1	2	1
WH WICHITA	OOH Last Day of the Month	2	2	2	2	2	2	4	4	4	3	3	2		3
WL WILSON	Removals	1	2	0	0	0	0	0	0	1	3	0	1	8	2
WL WILSON	Exits	2	0	0	1	0	0	2	0	0	3	5	1	14	2
WL WILSON	OOH Last Day of the Month	40	42	42	42	41	40	38	39	40	40	35	35		40

WO WOODSON	Removals	0	1	0	2	0	0	0	0	0	0	0	0	3	2
WO WOODSON	Exits	0	0	2	1	1	2	0	0	0	1	1	0	8	1
WO WOODSON	OOH Last Day of the Month	14	15	13	14	13	11	12	12	12	11	10	10		12
WS WASHINGTON	Removals	0	0	3	1	0	0	0	0	0	0	0	1	5	2
WS WASHINGTON	Exits	0	0	0	1	0	0	0	0	0	0	1	0	2	1
WS WASHINGTON	OOH Last Day of the Month	10	8	11	11	11	11	12	12	13	13	10	11		11
WY WYANDOTTE	Removals	19	15	9	6	1	7	9	5	6	7	13	11	108	9
WY WYANDOTTE	Exits	6	13	10	12	11	11	7	18	12	14	12	6	132	11
WY WYANDOTTE	OOH Last Day of the Month	378	386	384	380	370	361	364	349	344	336	338	343		361

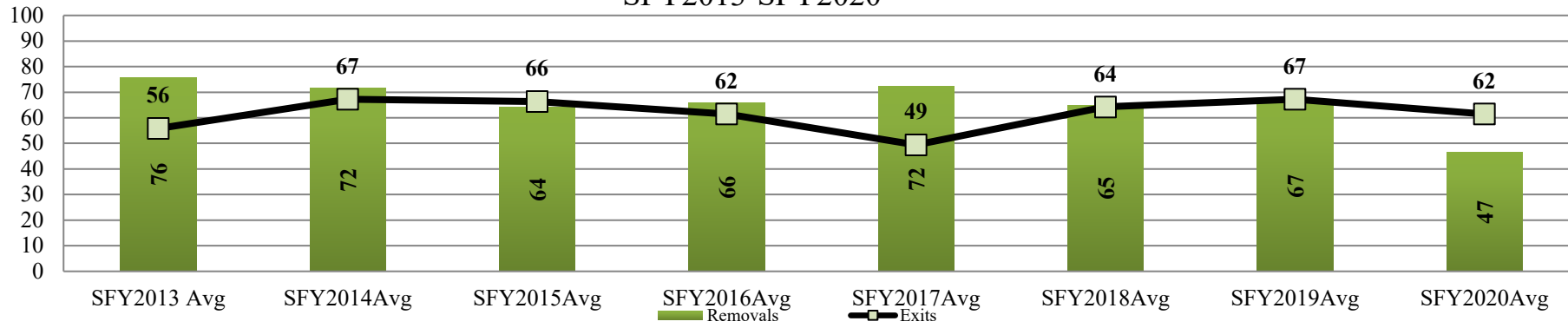
Data Sources:

Removals- from FACTS

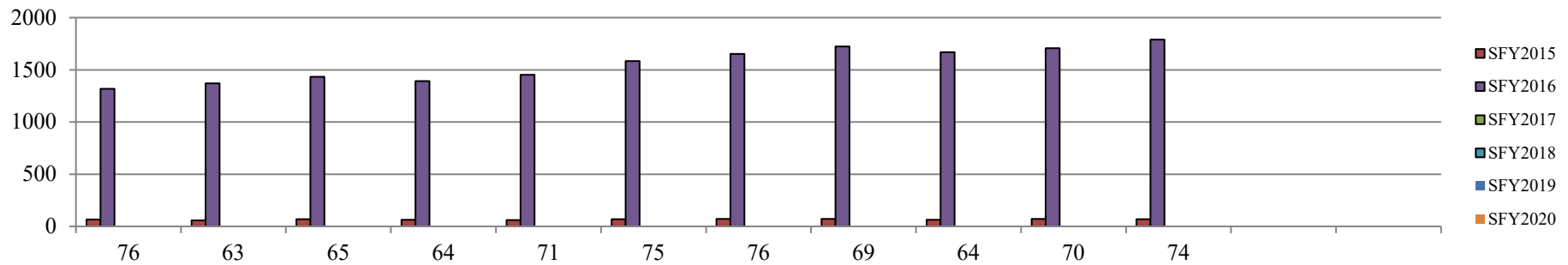
Exits- from FACTS

OOH Last Day of the Month- from FACTS

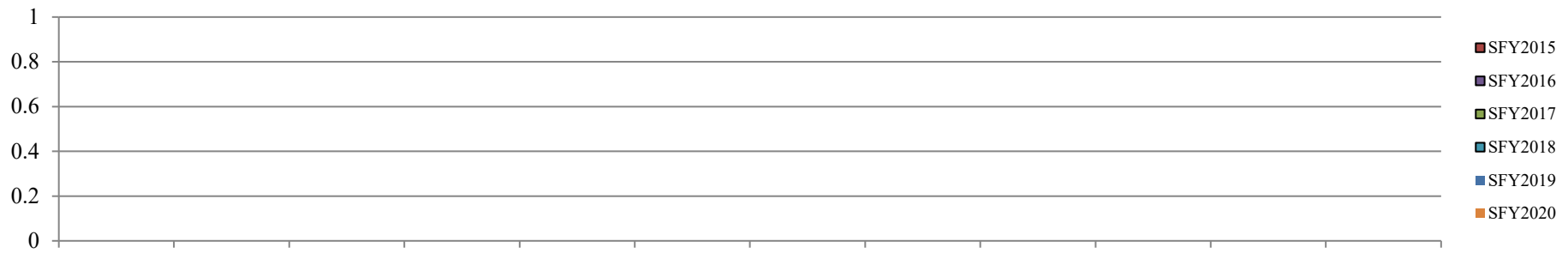
Kansas City Region Fiscal Year Average Removals and Exits
SFY2013-SFY2020



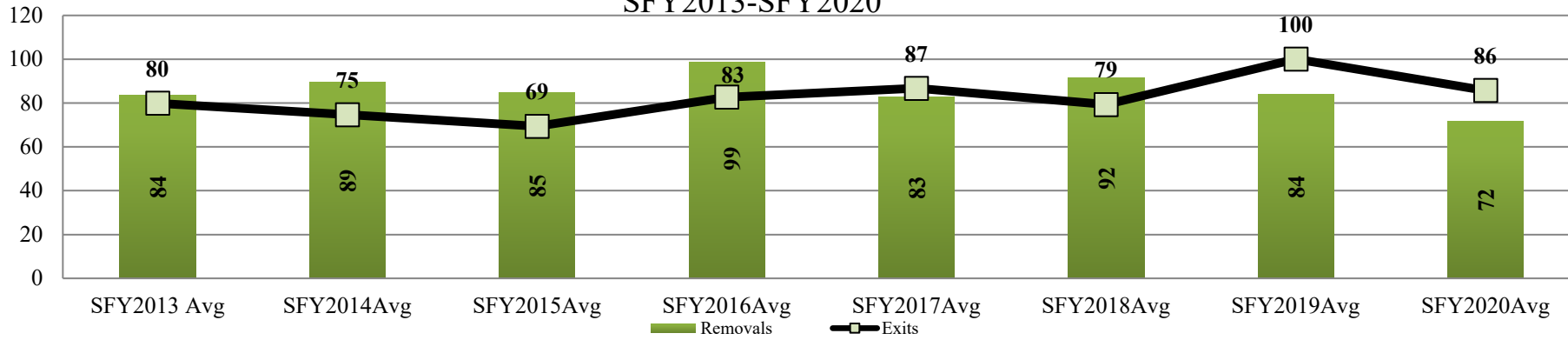
Kansas City Region Monthly Exits
SFY2015-SFY2020



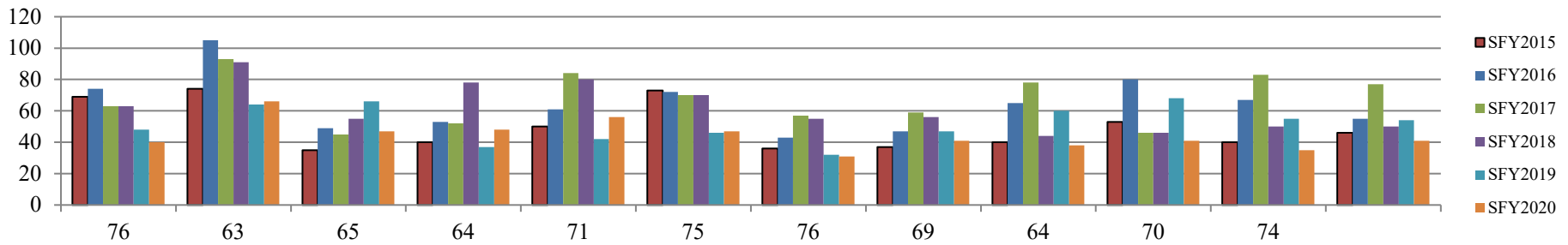
Kansas City Region Monthly Removals
SFY2015-SFY2020



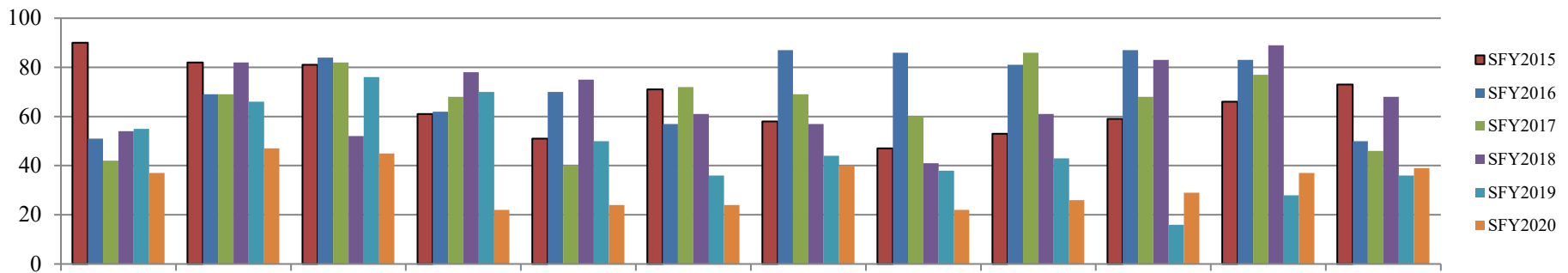
East Region Fiscal Year Average Removals and Exits
SFY2013-SFY2020



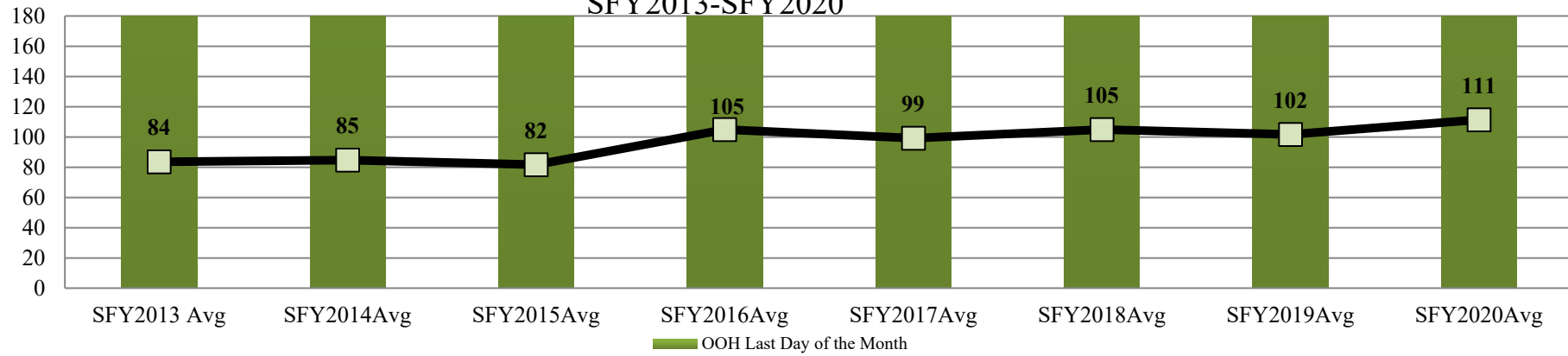
East Region Monthly Exits
SFY2015-SFY2020



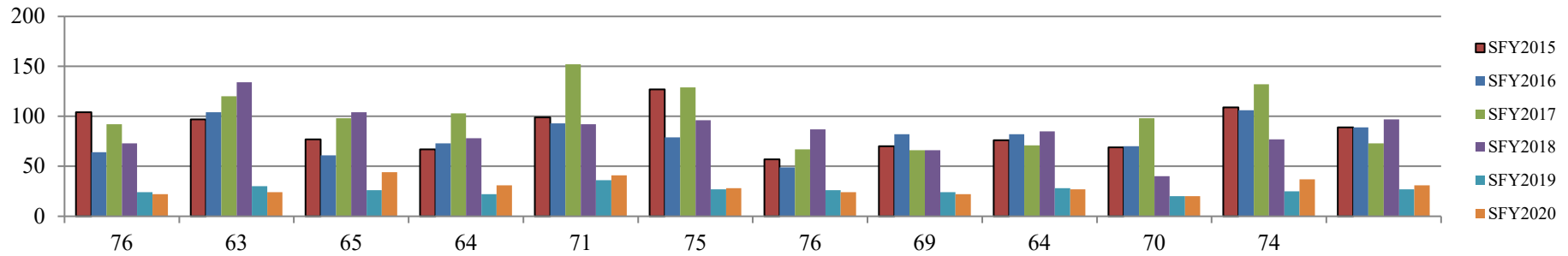
East Region Monthly Removals
SFY2015-SFY2020



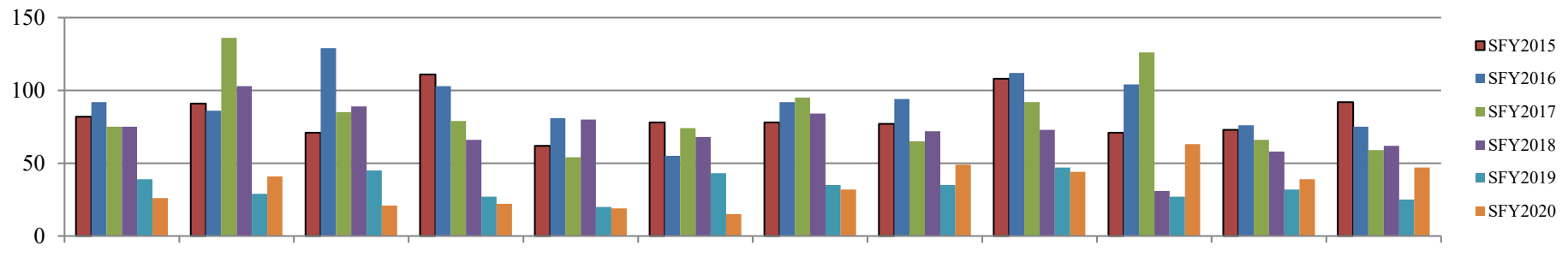
West Region Fiscal Year Average Removals and Exits
SFY2013-SFY2020



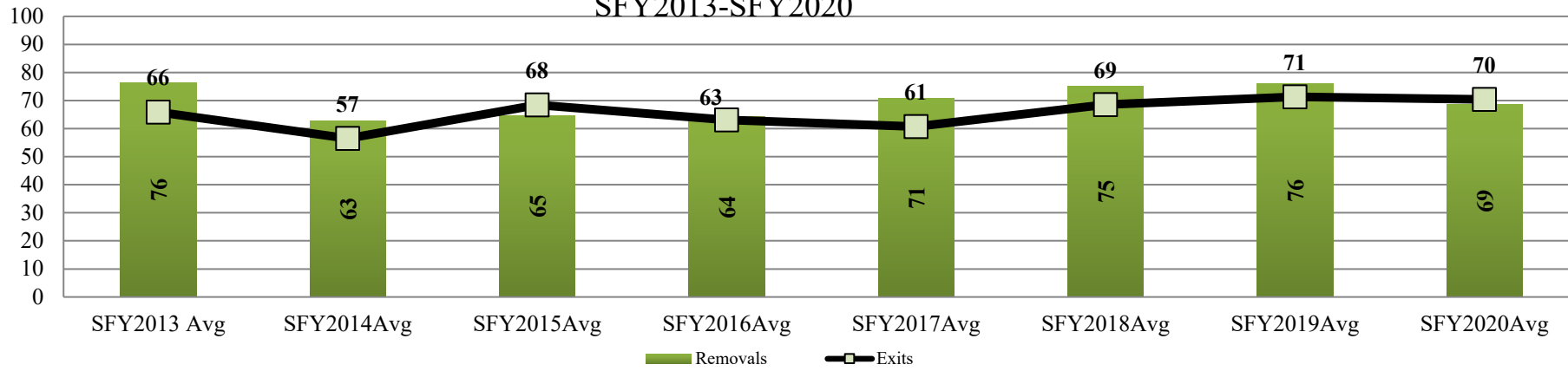
West Region Monthly Exits
SFY2015-SFY2020



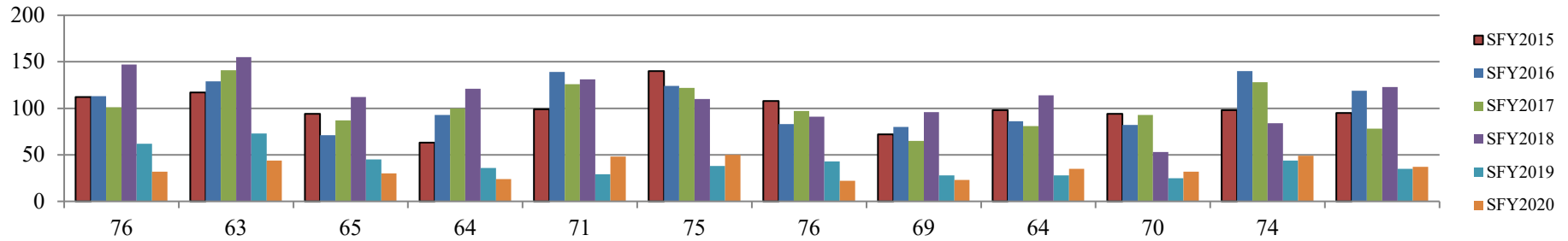
West Region Monthly Removals
SFY2015-SFY2020



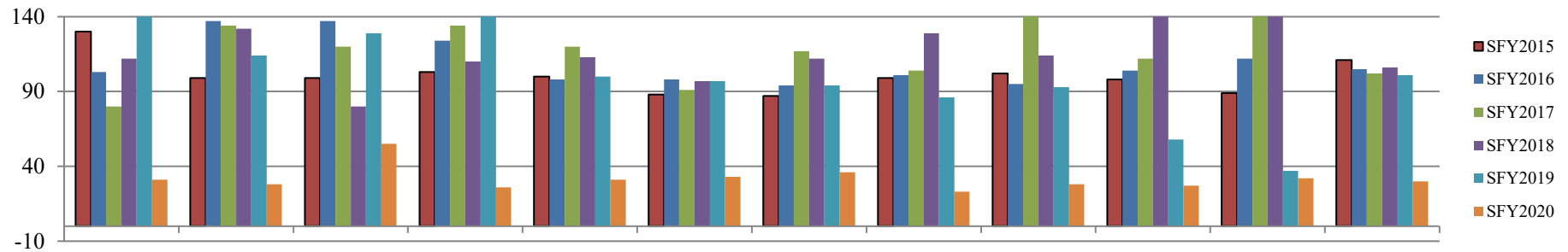
Wichita Region Fiscal Year Average Removals and Exits
SFY2013-SFY2020



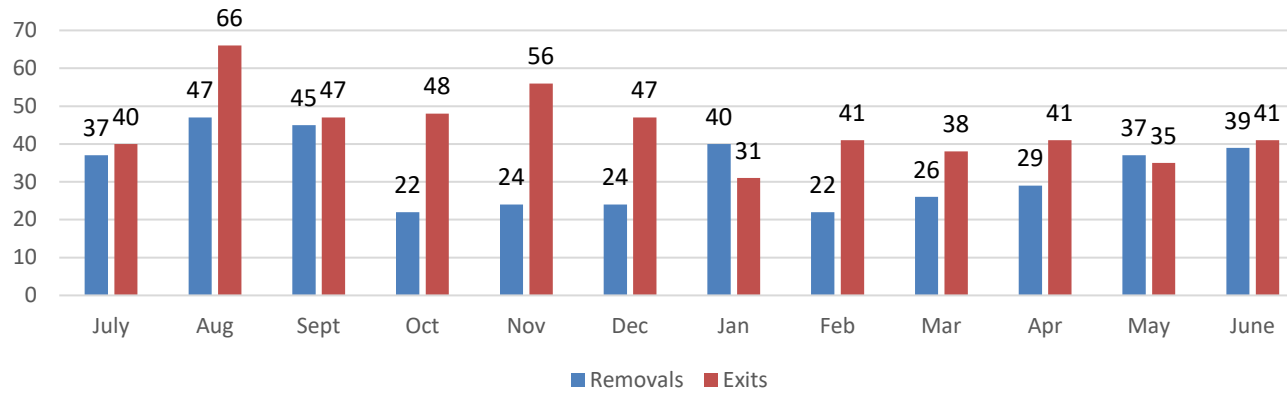
Wichita Region Monthly Exits
SFY2015-SFY2020



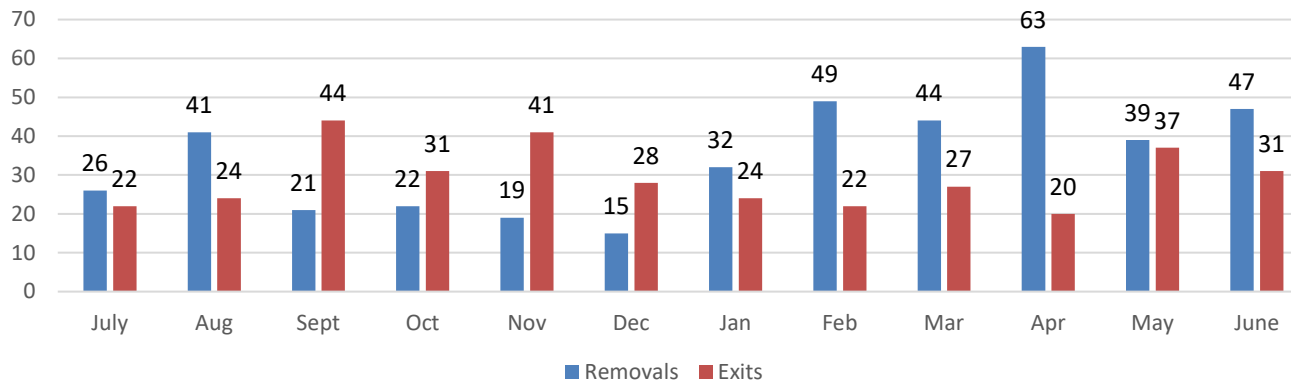
Wichita Region Monthly Removals
SFY2015-SFY2020



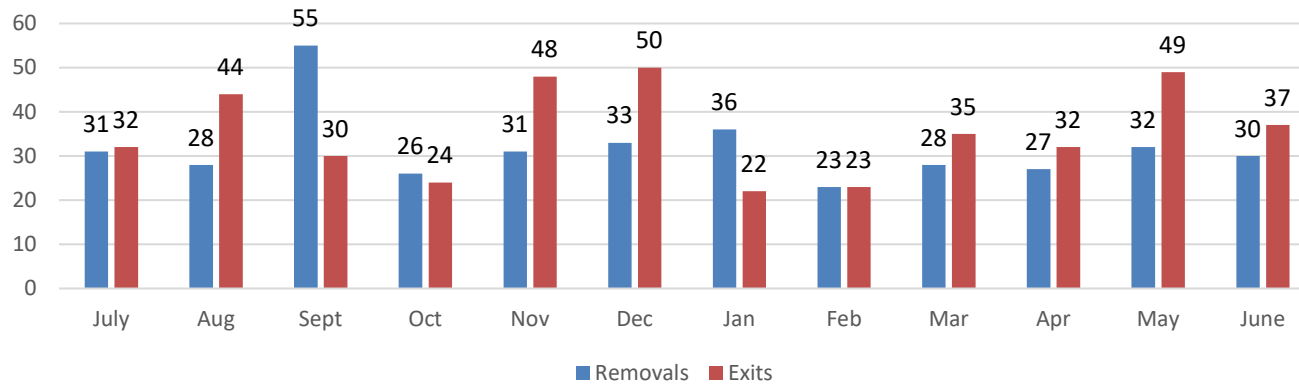
Kansas City Region Removals and Exits SFY2023



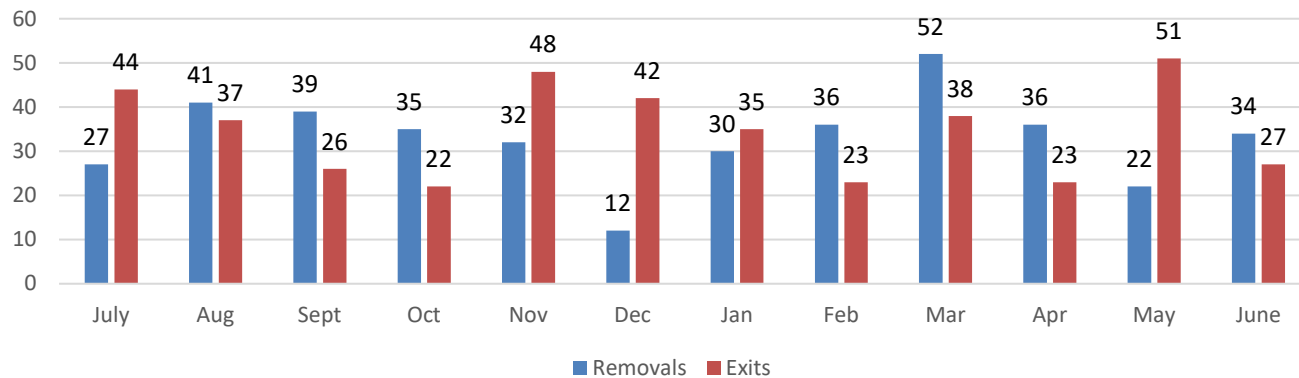
Northeast Region Removals and Exits SFY2023



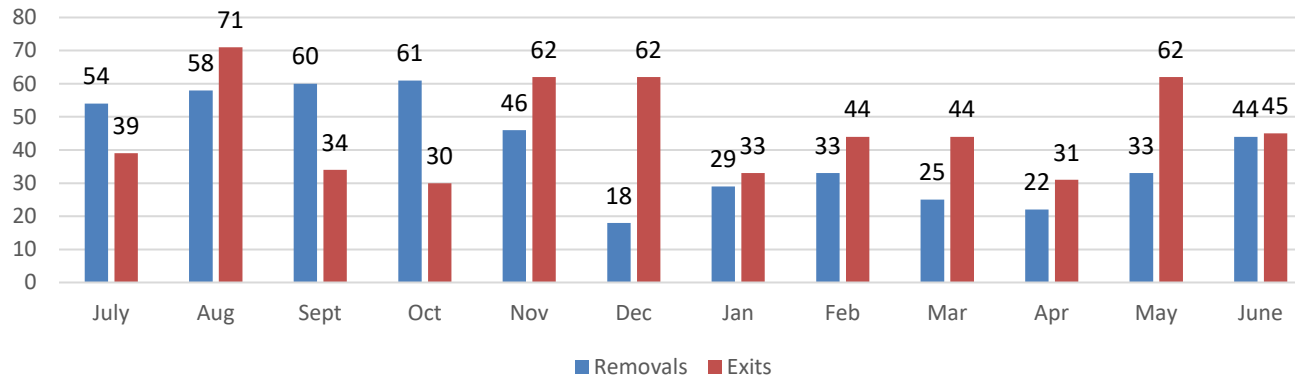
Northwest Region Removals and Exits SFY2023



Southeast Region Removals and Exits SFY2023



Southwest Region Removals and Exits SFY2023



Wichita Region Removals and Exits SFY2023

