



## FY 2021 Removals, Exits and Out of Home Summary (FACTS)

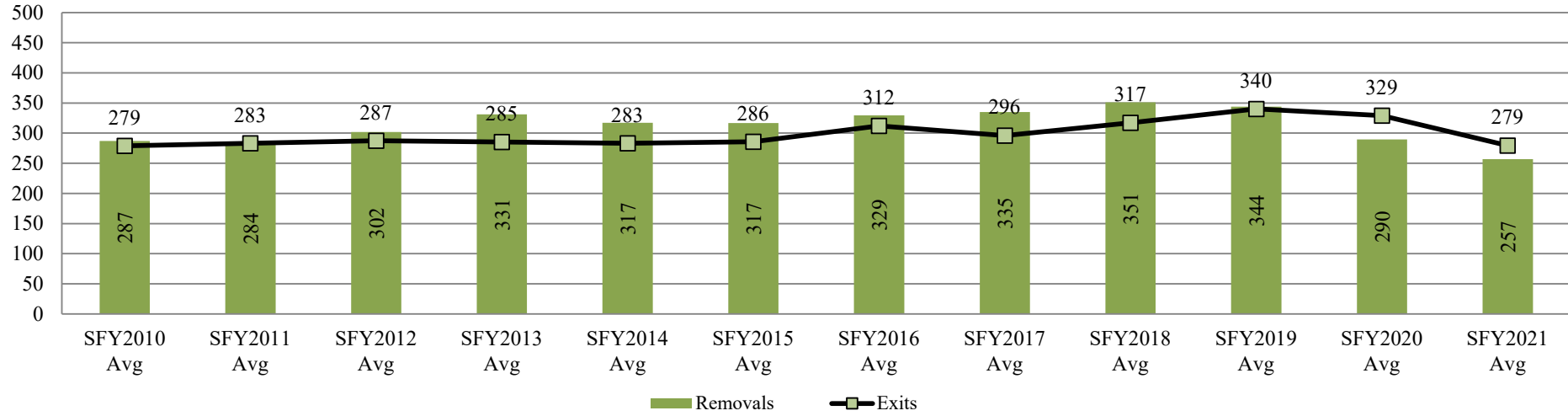
This report contains information on the number children removed into foster care in a given month, the number of children who exited foster care placement outside of their home in a given month, and the number of children who are in a foster care placement outside of their home (OOH) on the last day of each month. Information is provided by DCF Region and County.

7/29/2021

By DCF Region	Type of Information	Jul	Aug	Sep	Oct	Nov	Dec	Jan	Feb	Mar	Apr	May	Jun	Fiscal year Total	Fiscal year Average
Kansas City Region	Removals	49	50	22	72	34	57	40	38	46	33	47	68	556	46
Kansas City Region	Exits	48	64	66	37	42	46	32	47	60	68	55	54	619	52
Kansas City Region	OOH Last Day of the Month	1480	1476	1434	1475	1470	1485	1501	1482	1482	1441	1428	1446		1,467
Northeast Region	Removals	39	29	45	27	20	43	35	35	47	27	32	25	404	34
Northeast Region	Exits	24	30	26	22	36	27	26	24	28	20	25	27	315	26
Northeast Region	OOH Last Day of the Month	889	881	909	912	914	914	926	937	961	970	981	972		931
Northwest Region	Removals	40	28	34	30	30	33	53	34	23	39	27	21	392	33
Northwest Region	Exits	62	73	45	36	29	38	43	28	28	25	44	35	486	41
Northwest Region	OOH Last Day of the Month	807	756	735	732	738	737	759	756	746	757	740	730		749
Southeast Region	Removals	28	36	31	51	40	31	29	20	28	50	38	32	414	35
Southeast Region	Exits	66	43	37	40	31	41	28	24	32	38	36	61	477	40
Southeast Region	OOH Last Day of the Month	886	881	875	886	905	891	890	897	891	911	913	879		892
Southwest Region	Removals	28	44	36	58	26	35	59	54	56	65	44	43	548	46
Southwest Region	Exits	58	73	55	62	67	61	46	38	69	75	50	54	708	59
Southwest Region	OOH Last Day of the Month	1255	1227	1194	1193	1151	1113	1127	1140	1142	1137	1127	1114		1,160
Wichita Region	Removals	67	58	55	65	58	56	60	60	64	69	81	74	767	64
Wichita Region	Exits	66	80	61	74	65	58	39	49	59	63	58	74	746	62
Wichita Region	OOH Last Day of the Month	1668	1659	1659	1653	1645	1640	1662	1667	1674	1679	1702	1704		1,668
State	Removals	251	245	223	303	208	255	276	241	264	283	269	263	3,081	257
State	Exits	324	363	290	271	270	271	214	210	276	289	268	305	3,351	279
State	OOH Last Day of the Month	6985	6880	6806	6851	6823	6780	6865	6879	6896	6895	6891	6845		6,866

\*Beginning in SFY2015 Discharges were replaced by Exits from Out of Home Placements.

### Fiscal Year Average Removals and Exits SFY2010-SFY2021



**Data Sources:**

**Removals-** from FACTS

**Exits-** from FACTS

**OOH Last Day of the Month-** from FACTS

**Information By County grouped in DCF Regions**

County	Type of Information	Jul	Aug	Sep	Oct	Nov	Dec	Jan	Feb	Mar	Apr	May	Jun	Fiscal year Total	Fiscal year Average
AL ALLEN	Removals	1	1	3	0	0	0	0	2	1	1	2	0	11	2
AL ALLEN	Exits	6	3	1	1	0	5	2	2	5	1	1	5	32	3
AL ALLEN	OOH Last Day of the Month	74	72	74	73	73	69	67	67	64	65	66	61		69
AN ANDERSON	Removals	0	1	0	4	2	0	4	2	1	2	4	0	20	3
AN ANDERSON	Exits	1	0	0	0	6	1	0	3	0	3	1	3	18	3
AN ANDERSON	OOH Last Day of the Month	16	17	17	21	17	16	18	19	20	21	22	19		19
AT ATCHISON	Removals	0	1	1	0	0	2	0	1	1	1	2	1	10	1
AT ATCHISON	Exits	0	4	3	1	0	0	5	2	0	2	3	5	25	3
AT ATCHISON	OOH Last Day of the Month	66	63	61	60	60	62	58	56	56	55	55	52		59
BA BARBER	Removals	1	0	0	5	1	0	0	0	0	1	2	1	11	2
BA BARBER	Exits	1	2	0	2	1	1	0	1	0	0	0	2	10	1
BA BARBER	OOH Last Day of the Month	22	20	20	22	22	21	21	21	21	24	26	25		22
BB BOURBON	Removals	6	3	4	3	1	1	2	1	5	5	4	3	38	3
BB BOURBON	Exits	4	0	6	9	1	1	1	2	3	0	4	8	39	4
BB BOURBON	OOH Last Day of the Month	56	60	58	53	53	53	54	50	52	57	57	52		55
BR BROWN	Removals	4	8	8	5	2	4	4	5	5	9	0	5	59	5
BR BROWN	Exits	4	1	2	5	2	4	6	2	7	2	3	4	42	4
BR BROWN	OOH Last Day of the Month	69	75	80	79	80	79	77	80	81	86	84	82		79
BT BARTON	Removals	2	6	2	0	3	2	4	3	3	6	3	5	39	4
BT BARTON	Exits	5	9	7	2	6	1	9	4	10	13	5	9	80	7
BT BARTON	OOH Last Day of the Month	120	121	114	113	109	98	89	97	94	87	85	82		101

BU BUTLER	Removals	9	5	9	11	7	11	14	8	12	13	6	12	117	10
BU BUTLER	Exits	8	5	8	8	0	9	2	3	11	7	9	11	81	7
BU BUTLER	OOH Last Day of the Month	189	189	188	192	193	194	206	212	216	218	212	214		202
CA CLARK	Removals	0	0	4	0	0	0	0	0	0	0	0	0	4	4
CA CLARK	Exits	0	1	0	0	0	1	1	0	0	0	0	0	3	1
CA CLARK	OOH Last Day of the Month	3	2	6	6	6	5	5	5	5	5	5	5		5
CD CLOUD	Removals	1	0	6	1	2	5	0	0	0	4	1	1	21	3
CD CLOUD	Exits	3	4	3	1	1	4	0	4	0	0	2	3	25	3
CD CLOUD	OOH Last Day of the Month	47	43	46	43	48	43	41	50	48	52	51	47		47
CF COFFEY	Removals	0	0	9	0	1	0	1	0	0	2	0	0	13	3
CF COFFEY	Exits	1	0	0	0	1	1	0	0	0	3	3	1	10	2
CF COFFEY	OOH Last Day of the Month	14	11	20	20	21	22	21	22	22	21	18	17		19
CK CHEROKEE	Removals	1	2	0	4	6	1	1	1	3	0	1	3	23	2
CK CHEROKEE	Exits	8	4	1	9	3	0	4	1	3	1	4	4	42	4
CK CHEROKEE	OOH Last Day of the Month	51	51	48	46	49	48	47	47	46	46	42	41		47
CL COWLEY	Removals	3	4	3	2	3	1	8	7	1	2	4	1	39	3
CL COWLEY	Exits	4	4	10	20	2	1	3	5	2	2	5	7	65	5
CL COWLEY	OOH Last Day of the Month	105	106	103	85	83	81	86	88	88	86	85	81		90
CM COMANCHE	Removals	0	0	0	0	0	0	0	0	0	0	0	0	0	0
CM COMANCHE	Exits	0	0	0	0	1	0	0	0	0	0	0	0	1	1
CM COMANCHE	OOH Last Day of the Month	5	5	5	5	4	4	4	4	4	4	4	4		4
CN CHEYENNE	Removals	0	0	0	0	0	0	0	0	0	0	0	0	0	0
CN CHEYENNE	Exits	0	0	2	1	1	0	0	0	0	0	0	0	4	1
CN CHEYENNE	OOH Last Day of the Month	7	7	5	5	4	4	4	4	4	4	4	4		5
CQ CHAUTAUQUA	Removals	0	2	0	0	0	0	4	0	0	0	1	0	7	2
CQ CHAUTAUQUA	Exits	0	0	0	0	0	0	0	0	0	0	0	0	0	0
CQ CHAUTAUQUA	OOH Last Day of the Month	5	7	7	7	7	7	11	11	11	11	12	12		9
CR CRAWFORD	Removals	1	5	2	5	7	4	4	3	8	8	3	6	56	5
CR CRAWFORD	Exits	5	16	4	6	5	4	8	2	2	6	4	7	69	6
CR CRAWFORD	OOH Last Day of the Month	123	113	112	112	115	118	115	116	124	127	126	127		119
CS CHASE	Removals	0	0	0	0	0	0	0	0	0	0	0	0	0	0
CS CHASE	Exits	0	0	0	0	0	1	0	0	1	0	1	2	5	1
CS CHASE	OOH Last Day of the Month	16	16	16	14	14	12	12	12	13	13	13	11		14
CY CLAY	Removals	1	0	0	4	0	0	0	2	0	2	0	0	9	2
CY CLAY	Exits	0	0	1	1	0	0	6	0	0	0	3	0	11	3
CY CLAY	OOH Last Day of the Month	21	21	20	25	25	25	19	19	19	21	18	18		21
DC DECATUR	Removals	0	0	0	0	0	1	2	1	0	0	0	1	5	1
DC DECATUR	Exits	0	0	0	0	0	2	0	1	0	0	0	0	3	2
DC DECATUR	OOH Last Day of the Month	4	4	4	4	4	3	5	5	5	5	5	6		5
DG DOUGLAS	Removals	3	6	7	2	3	2	6	10	9	11	6	6	71	6
DG DOUGLAS	Exits	6	7	3	6	5	6	2	2	7	5	3	8	60	5
DG DOUGLAS	OOH Last Day of the Month	159	160	163	162	158	159	163	164	172	180	181	179		167
DK DICKINSON	Removals	0	0	1	1	5	3	2	7	0	7	2	2	30	3
DK DICKINSON	Exits	3	4	4	3	3	1	1	6	0	1	1	3	30	3
DK DICKINSON	OOH Last Day of the Month	37	35	32	30	28	26	28	29	29	35	36	35		32
DP DONIPHAN	Removals	1	0	3	1	0	0	0	4	0	0	2	0	11	2
DP DONIPHAN	Exits	0	1	0	0	1	0	4	1	0	1	3	2	13	2

DP DONIPHAN	OOH Last Day of the Month	35	34	37	38	37	37	37	37	38	37	36	33		36
ED EDWARDS	Removals	0	0	0	0	1	0	0	3	0	0	0	0	4	2
ED EDWARDS	Exits	0	0	0	0	0	0	0	0	1	3	0	0	4	2
ED EDWARDS	OOH Last Day of the Month	9	9	10	8	9	9	9	11	10	7	7	7		9
EK ELK	Removals	0	0	3	0	3	0	0	1	0	0	3	0	10	3
EK ELK	Exits	2	0	0	0	0	0	2	0	0	0	4	1	9	2
EK ELK	OOH Last Day of the Month	8	8	11	11	13	13	11	12	11	12	12	11		11
EL ELLIS	Removals	1	2	5	4	2	4	5	2	2	2	2	5	36	3
EL ELLIS	Exits	6	11	0	5	5	3	4	1	4	4	1	4	48	4
EL ELLIS	OOH Last Day of the Month	87	76	81	81	77	82	86	87	83	80	82	81		82
EW ELLSWORTH	Removals	0	0	0	0	0	1	4	0	0	0	0	0	5	3
EW ELLSWORTH	Exits	0	0	3	0	0	0	4	0	0	0	0	0	7	4
EW ELLSWORTH	OOH Last Day of the Month	14	14	11	11	11	15	15	13	13	13	13	14		13
FI FINNEY	Removals	4	1	5	2	6	11	10	3	5	20	1	1	69	6
FI FINNEY	Exits	4	3	3	8	2	9	7	1	7	11	11	8	74	6
FI FINNEY	OOH Last Day of the Month	151	144	141	134	138	138	141	146	151	156	146	141		144
FO FORD	Removals	3	6	8	12	2	3	4	2	10	6	1	3	60	5
FO FORD	Exits	7	9	4	9	13	9	2	4	13	6	5	0	81	7
FO FORD	OOH Last Day of the Month	114	111	112	118	110	104	103	100	101	102	96	98		106
FR FRANKLIN	Removals	4	0	2	9	4	1	5	0	1	9	2	5	42	4
FR FRANKLIN	Exits	7	1	5	2	1	2	1	5	4	2	3	1	34	3
FR FRANKLIN	OOH Last Day of the Month	77	76	75	77	82	83	86	84	81	89	89	92		83
GE GEARY	Removals	10	10	2	3	7	2	5	9	7	6	2	0	63	6
GE GEARY	Exits	8	11	15	5	6	7	3	4	7	3	7	6	82	7
GE GEARY	OOH Last Day of the Month	126	125	106	101	106	103	108	104	107	109	105	104		109
GH GRAHAM	Removals	0	0	0	0	1	1	0	0	3	0	0	0	5	2
GH GRAHAM	Exits	2	0	0	0	0	0	0	0	0	0	0	0	2	2
GH GRAHAM	OOH Last Day of the Month	5	5	5	5	8	7	7	7	10	10	10	10		7
GL GREELEY	Removals	0	0	0	0	0	0	0	0	0	0	0	0	0	0
GL GREELEY	Exits	0	0	0	0	0	1	0	0	0	0	0	0	1	1
GL GREELEY	OOH Last Day of the Month	4	4	3	3	3	0	0	0	0	0	0	0		3
GO GOVE	Removals	0	0	0	0	0	0	0	0	0	0	0	0	0	0
GO GOVE	Exits	0	0	0	0	0	0	0	0	0	0	1	0	1	1
GO GOVE	OOH Last Day of the Month	0	0	0	0	0	0	0	0	0	0	0	0		0
GT GRANT	Removals	0	5	0	0	0	0	0	0	0	3	0	0	8	4
GT GRANT	Exits	0	0	1	5	0	2	2	0	0	0	1	0	11	2
GT GRANT	OOH Last Day of the Month	17	22	19	16	16	14	12	12	12	15	14	14		15
GW GREENWOOD	Removals	2	3	0	0	0	0	2	4	3	1	0	1	16	2
GW GREENWOOD	Exits	2	3	4	0	7	0	0	0	3	8	1	1	29	4
GW GREENWOOD	OOH Last Day of the Month	38	36	34	33	26	25	26	30	34	27	23	23		30
GY GRAY	Removals	0	0	0	0	0	0	0	0	0	0	0	0	0	0
GY GRAY	Exits	0	0	0	0	0	0	0	0	0	0	0	0	0	0
GY GRAY	OOH Last Day of the Month	7	7	7	7	7	7	7	7	7	7	7	7		7
HG HODGEMAN	Removals	0	0	0	0	0	0	2	0	0	0	0	0	2	2
HG HODGEMAN	Exits	0	0	0	0	0	0	0	2	0	0	0	0	2	2
HG HODGEMAN	OOH Last Day of the Month	1	1	1	1	1	1	3	1	1	1	1	1		1

HM HAMILTON	Removals	0	0	0	0	0	1	0	0	0	0	0	0	1	1
HM HAMILTON	Exits	0	0	0	0	0	0	0	0	0	1	1	0	2	1
HM HAMILTON	OOH Last Day of the Month	10	10	10	10	10	11	11	11	11	10	10	9		10
HP HARPER	Removals	6	0	1	1	0	3	0	0	0	2	1	0	14	2
HP HARPER	Exits	1	0	0	4	0	2	1	0	2	1	1	7	19	2
HP HARPER	OOH Last Day of the Month	39	39	40	37	37	37	36	37	37	36	36	29		37
HS HASKELL	Removals	3	1	0	0	0	0	0	0	0	0	0	0	4	2
HS HASKELL	Exits	0	1	0	0	0	0	0	3	1	0	0	0	5	2
HS HASKELL	OOH Last Day of the Month	11	11	12	12	11	11	11	8	9	9	8	8		10
HV HARVEY	Removals	2	0	0	0	0	0	0	4	3	0	0	2	11	3
HV HARVEY	Exits	8	4	2	1	1	1	7	0	2	3	1	3	33	3
HV HARVEY	OOH Last Day of the Month	70	64	61	59	58	60	54	56	52	55	53	50		58
JA JACKSON	Removals	0	2	1	0	1	1	3	8	5	1	2	1	25	3
JA JACKSON	Exits	1	1	1	1	2	3	1	1	0	0	1	0	12	1
JA JACKSON	OOH Last Day of the Month	31	33	33	32	31	32	35	42	45	46	48	46		38
JF JEFFERSON	Removals	3	3	0	1	0	0	4	1	0	0	4	0	16	3
JF JEFFERSON	Exits	3	1	0	0	1	2	0	0	0	0	1	1	9	2
JF JEFFERSON	OOH Last Day of the Month	31	28	26	27	28	25	29	30	30	30	33	32		29
JO JOHNSON	Removals	32	14	7	31	16	35	18	19	17	8	21	14	232	19
JO JOHNSON	Exits	13	18	28	12	14	23	11	12	20	22	13	22	208	17
JO JOHNSON	OOH Last Day of the Month	557	559	542	561	566	581	592	591	597	579	587	581		574
JW JEWELL	Removals	0	0	0	2	0	0	0	0	0	1	2	0	5	2
JW JEWELL	Exits	0	0	0	0	0	0	3	0	0	0	0	0	3	3
JW JEWELL	OOH Last Day of the Month	7	7	7	9	9	9	7	6	6	7	9	9		8
KE KEARNY	Removals	0	1	2	7	2	1	0	0	1	1	3	0	18	2
KE KEARNY	Exits	0	0	0	2	0	2	0	0	0	0	0	1	5	2
KE KEARNY	OOH Last Day of the Month	13	14	16	21	23	22	22	19	21	22	25	24		20
KM KINGMAN	Removals	2	0	0	0	0	0	0	1	0	0	0	3	6	2
KM KINGMAN	Exits	0	2	1	0	0	0	0	0	0	0	0	0	3	2
KM KINGMAN	OOH Last Day of the Month	34	25	24	29	29	29	28	29	29	29	27	30		29
KW KIOWA	Removals	0	0	0	0	2	0	0	0	0	0	0	0	2	2
KW KIOWA	Exits	0	0	0	0	0	0	0	0	0	0	0	0	0	0
KW KIOWA	OOH Last Day of the Month	1	1	1	1	3	3	3	3	3	3	3	3		2
LB LABETTE	Removals	2	0	2	2	8	6	0	1	1	5	6	0	33	4
LB LABETTE	Exits	1	4	2	0	1	0	1	0	1	1	1	5	17	2
LB LABETTE	OOH Last Day of the Month	46	44	45	46	53	52	51	53	53	57	62	57		52
LC LINCOLN	Removals	0	0	0	0	0	0	0	0	0	0	0	1	1	1
LC LINCOLN	Exits	0	0	0	2	0	0	0	0	0	0	0	0	2	2
LC LINCOLN	OOH Last Day of the Month	12	12	12	10	10	10	10	10	10	10	10	11		11
LE LANE	Removals	0	0	0	3	0	0	0	0	1	1	0	0	5	2
LE LANE	Exits	0	0	0	0	0	0	0	0	0	0	0	0	0	0
LE LANE	OOH Last Day of the Month	6	6	6	6	6	9	9	9	10	11	11	11		8
LG LOGAN	Removals	1	1	0	0	0	0	1	1	0	0	0	0	4	1
LG LOGAN	Exits	0	0	0	0	0	0	1	0	0	0	1	0	2	1
LG LOGAN	OOH Last Day of the Month	8	8	8	8	8	9	9	10	10	10	9	9		9
LN LINN	Removals	2	2	0	7	2	2	2	5	1	1	0	2	26	3
LN LINN	Exits	6	2	3	0	0	11	0	0	4	2	1	2	31	4

LN LINN	OOH Last Day of the Month	32	33	30	36	38	29	31	36	33	32	31	31		33
LV LEAVENWORTH	Removals	2	6	1	10	6	5	5	3	13	4	6	11	72	6
LV LEAVENWORTH	Exits	4	9	1	2	3	3	6	6	7	2	6	2	51	4
LV LEAVENWORTH	OOH Last Day of the Month	162	161	161	170	173	174	174	177	182	180	179	188		173
LY LYON	Removals	3	5	3	5	3	0	8	9	3	7	11	2	59	5
LY LYON	Exits	4	12	3	1	12	11	1	7	8	3	3	8	73	6
LY LYON	OOH Last Day of the Month	153	148	144	154	148	140	147	139	132	136	140	134		143
MC MITCHELL	Removals	7	1	1	0	1	2	1	0	2	0	2	0	17	2
MC MITCHELL	Exits	1	1	1	1	0	1	2	1	0	0	1	0	9	1
MC MITCHELL	OOH Last Day of the Month	17	17	17	15	16	14	15	12	14	14	15	17		15
ME MEADE	Removals	0	1	0	0	0	0	1	0	0	0	0	0	2	1
ME MEADE	Exits	0	0	0	1	0	0	3	0	0	0	0	0	4	2
ME MEADE	OOH Last Day of the Month	8	10	10	9	9	9	7	7	7	7	7	7		8
MG MONTGOMERY	Removals	1	9	0	5	4	2	3	0	2	5	11	2	44	4
MG MONTGOMERY	Exits	13	7	8	5	8	8	3	1	6	12	4	7	82	7
MG MONTGOMERY	OOH Last Day of the Month	180	180	175	176	173	168	167	169	165	158	166	159		170
MI MIAMI	Removals	3	0	3	4	2	0	2	0	0	2	4	0	20	3
MI MIAMI	Exits	2	1	2	4	2	2	3	1	0	2	0	2	21	2
MI MIAMI	OOH Last Day of the Month	54	55	55	54	55	51	50	50	49	50	53	49		52
MN MARION	Removals	1	1	0	0	1	0	0	0	0	0	0	0	3	1
MN MARION	Exits	0	0	4	0	3	2	2	2	3	0	1	1	18	2
MN MARION	OOH Last Day of the Month	34	35	33	33	29	28	27	24	21	21	20	19		27
MP MCPHERSON	Removals	0	1	1	4	3	8	2	1	4	3	1	6	34	3
MP MCPHERSON	Exits	7	4	1	9	1	1	3	4	0	3	6	3	42	4
MP MCPHERSON	OOH Last Day of the Month	46	43	42	38	40	51	51	52	51	49	45	47		46
MR MORRIS	Removals	1	0	0	3	0	0	0	0	0	1	0	0	5	2
MR MORRIS	Exits	4	2	0	1	0	0	0	0	0	0	0	0	7	2
MR MORRIS	OOH Last Day of the Month	7	5	5	7	7	7	7	7	7	8	8	8		7
MS MARSHALL	Removals	2	4	5	0	0	3	5	2	5	2	1	3	32	3
MS MARSHALL	Exits	0	6	5	2	2	5	0	5	4	4	6	0	39	4
MS MARSHALL	OOH Last Day of the Month	43	41	42	42	40	38	43	41	42	44	36	39		41
MT MORTON	Removals	1	0	0	0	0	0	0	0	1	0	0	0	2	1
MT MORTON	Exits	0	0	0	2	0	2	0	0	0	1	0	1	6	2
MT MORTON	OOH Last Day of the Month	12	12	12	10	10	8	9	8	8	7	7	6		9
NM NEMAHA	Removals	0	1	0	1	0	5	0	0	0	0	0	0	7	2
NM NEMAHA	Exits	0	1	0	0	1	0	0	0	0	0	0	3	5	2
NM NEMAHA	OOH Last Day of the Month	15	14	15	16	15	15	20	19	19	19	19	16		17
NO NEOSHO	Removals	1	3	1	2	3	6	1	2	4	5	0	6	34	3
NO NEOSHO	Exits	5	2	5	4	2	4	3	3	1	1	3	7	40	3
NO NEOSHO	OOH Last Day of the Month	70	70	66	62	64	64	62	63	64	68	65	65		65
NS NESS	Removals	0	0	0	0	0	0	0	0	0	0	0	0	0	0
NS NESS	Exits	0	0	2	0	0	0	0	0	0	0	0	0	2	2
NS NESS	OOH Last Day of the Month	2	2	0	0	0	0	0	0	0	0	0	0		2
NT NORTON	Removals	0	0	2	0	0	0	0	1	3	0	1	0	7	2
NT NORTON	Exits	4	1	0	0	2	0	0	0	0	0	0	1	8	2
NT NORTON	OOH Last Day of the Month	18	16	18	18	16	16	16	17	20	20	21	20		18
OB OSBORNE	Removals	0	0	1	0	0	0	0	0	0	1	0	1	3	1

OB OSBORNE	Exits	0	0	0	0	0	0	0	0	0	1	3	0	4	2
OB OSBORNE	OOH Last Day of the Month	9	9	10	10	10	10	8	9	8	8	5	6		9
OS OSAGE	Removals	1	4	5	1	0	1	0	1	0	1	0	3	17	2
OS OSAGE	Exits	1	1	0	0	1	0	0	4	0	0	2	1	10	2
OS OSAGE	OOH Last Day of the Month	28	30	31	38	37	37	37	35	34	35	35	35		34
OT OTTAWA	Removals	0	0	1	0	1	0	0	0	0	1	0	0	3	1
OT OTTAWA	Exits	0	0	0	0	0	4	0	0	2	1	3	0	10	3
OT OTTAWA	OOH Last Day of the Month	9	10	11	11	12	8	8	8	6	6	3	3		8
PL PHILLIPS	Removals	0	0	0	0	0	0	0	0	1	1	2	0	4	1
PL PHILLIPS	Exits	1	1	1	0	1	0	0	0	0	0	1	0	5	1
PL PHILLIPS	OOH Last Day of the Month	15	13	12	12	11	11	11	9	10	8	9	9		11
PN PAWNEE	Removals	0	2	0	0	0	0	5	0	0	1	0	0	8	3
PN PAWNEE	Exits	0	2	1	0	0	0	2	0	0	1	4	0	10	2
PN PAWNEE	OOH Last Day of the Month	18	19	18	17	17	17	21	21	20	20	16	16		18
PR PRATT	Removals	1	2	0	2	0	0	1	4	4	0	1	1	16	2
PR PRATT	Exits	0	4	3	2	0	0	0	1	0	3	1	0	14	2
PR PRATT	OOH Last Day of the Month	31	32	31	29	28	28	29	32	36	33	36	36		32
PT POTTAWATOMIE	Removals	6	0	2	1	0	1	0	0	3	0	1	1	15	2
PT POTTAWATOMIE	Exits	1	1	2	0	1	0	0	1	1	0	1	0	8	1
PT POTTAWATOMIE	OOH Last Day of the Month	19	17	18	18	17	17	17	21	22	19	24	24		19
RA RAWLINS	Removals	1	0	0	0	3	1	1	0	0	2	0	0	8	2
RA RAWLINS	Exits	0	0	0	0	1	1	1	0	1	1	4	0	9	2
RA RAWLINS	OOH Last Day of the Month	4	4	4	4	6	5	6	6	5	6	2	2		5
RC RICE	Removals	0	1	1	2	0	3	4	3	5	0	0	2	21	3
RC RICE	Exits	2	2	3	0	2	4	1	2	1	3	3	1	24	2
RC RICE	OOH Last Day of the Month	45	45	42	45	41	40	37	39	48	45	42	43		43
RH RUSH	Removals	0	1	0	0	0	0	0	1	0	0	0	0	2	1
RH RUSH	Exits	0	0	1	0	0	0	0	0	0	0	0	0	1	1
RH RUSH	OOH Last Day of the Month	7	8	7	7	7	7	7	7	7	8	8	7		7
RL RILEY	Removals	10	4	4	2	2	6	17	0	1	4	0	4	54	5
RL RILEY	Exits	9	5	3	3	4	7	6	1	0	3	2	2	45	4
RL RILEY	OOH Last Day of the Month	78	71	73	75	73	69	88	81	81	82	78	80		77
RN RENO	Removals	5	10	10	16	2	4	10	23	13	8	16	19	136	11
RN RENO	Exits	18	18	19	11	26	11	3	7	18	23	7	14	175	15
RN RENO	OOH Last Day of the Month	281	270	262	263	238	227	241	258	259	247	256	262		255
RO ROOKS	Removals	0	2	0	0	0	0	1	0	0	0	0	0	3	2
RO ROOKS	Exits	1	0	0	0	0	0	0	0	1	0	0	0	2	1
RO ROOKS	OOH Last Day of the Month	8	9	10	10	10	9	10	12	12	15	16	16		11
RP REPUBLIC	Removals	1	0	0	0	0	0	1	0	2	0	0	0	4	1
RP REPUBLIC	Exits	0	4	0	0	1	0	0	0	0	0	0	1	6	2
RP REPUBLIC	OOH Last Day of the Month	7	7	3	5	4	6	6	5	7	7	7	6		6
RS RUSSELL	Removals	0	1	1	0	2	0	4	0	1	2	1	0	12	2
RS RUSSELL	Exits	0	3	0	0	0	0	0	0	2	2	2	0	7	2
RS RUSSELL	OOH Last Day of the Month	15	13	14	15	17	17	20	20	20	21	19	19		18
SA SALINE	Removals	3	7	3	6	2	6	9	9	1	4	5	3	58	5
SA SALINE	Exits	15	19	8	8	4	2	12	5	10	7	11	10	111	9
SA SALINE	OOH Last Day of the Month	168	156	151	151	148	164	160	163	152	147	141	133		153





WH WICHITA	OOH Last Day of the Month	2	2	2	2	2	2	2	2	2	2	2	2		2
WL WILSON	Removals	3	3	0	2	0	3	0	2	1	2	0	1	17	2
WL WILSON	Exits	5	1	0	0	0	2	2	0	3	3	0	7	23	3
WL WILSON	OOH Last Day of the Month	46	48	48	50	50	52	51	53	51	51	51	44		50
WO WOODSON	Removals	2	1	0	3	0	4	0	0	0	2	0	1	13	2
WO WOODSON	Exits	1	1	0	0	0	0	0	0	0	1	5	1	9	2
WO WOODSON	OOH Last Day of the Month	14	14	14	15	18	22	22	22	22	23	18	18		19
WS WASHINGTON	Removals	2	0	0	0	0	0	0	2	0	0	0	0	4	2
WS WASHINGTON	Exits	0	0	0	0	0	0	0	0	0	0	0	0	0	0
WS WASHINGTON	OOH Last Day of the Month	8	8	8	7	7	7	7	9	9	9	9	9		8
WY WYANDOTTE	Removals	12	23	6	29	9	13	11	5	6	9	12	36	171	14
WY WYANDOTTE	Exits	25	26	31	16	20	14	8	25	26	37	30	17	275	23
WY WYANDOTTE	OOH Last Day of the Month	536	533	507	522	513	509	514	494	475	447	426	446		494

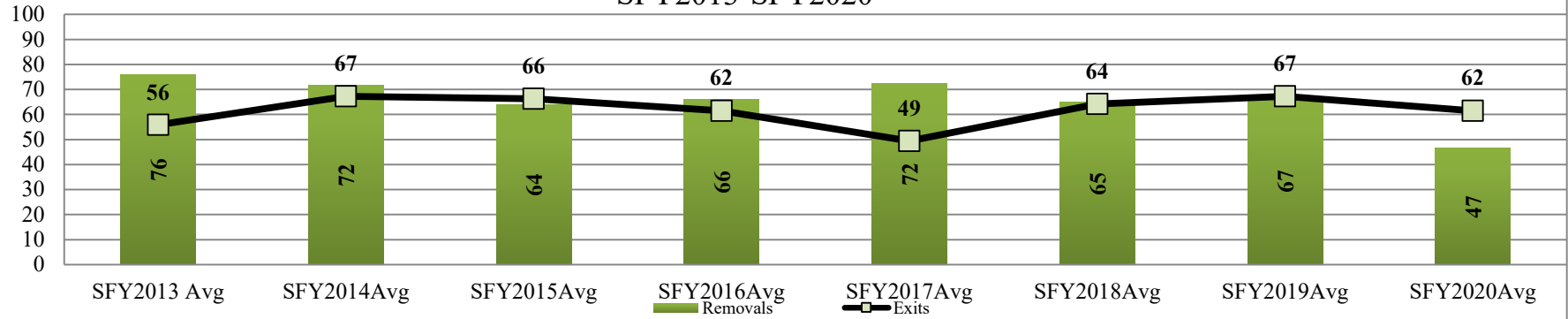
**Data Sources:**

**Removals-** from FACTS

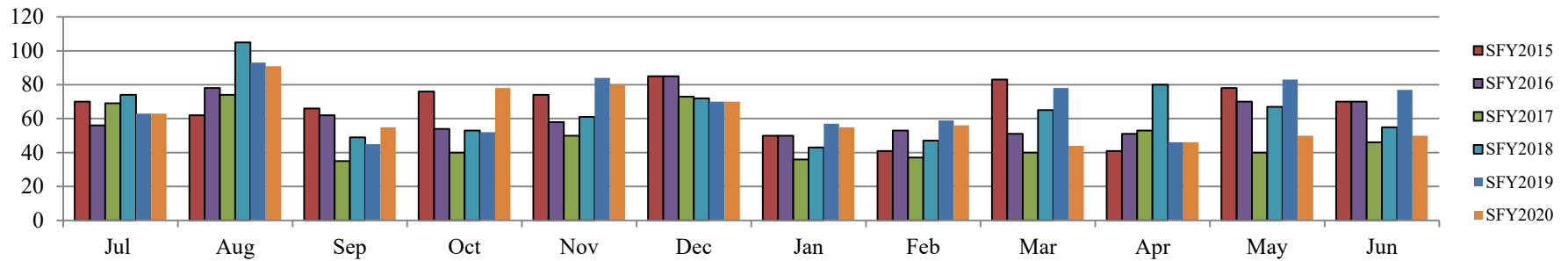
**Exits-** from FACTS

**OOH Last Day of the Month-** from FACTS

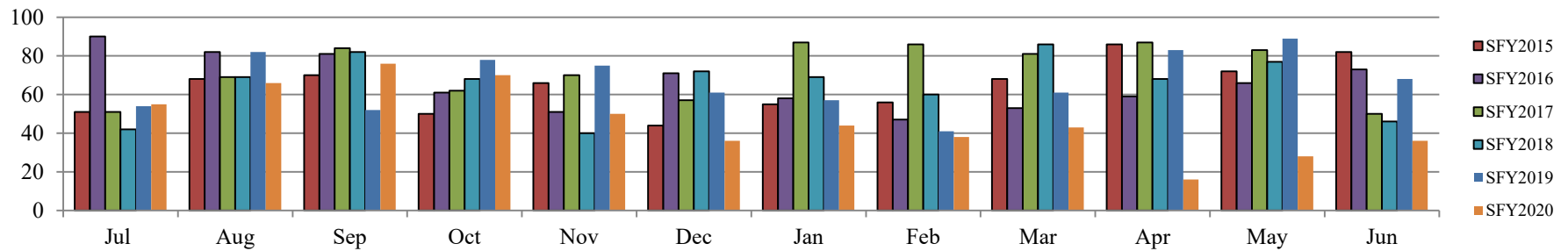
### Kansas City Region Fiscal Year Average Removals and Exits SFY2013-SFY2020



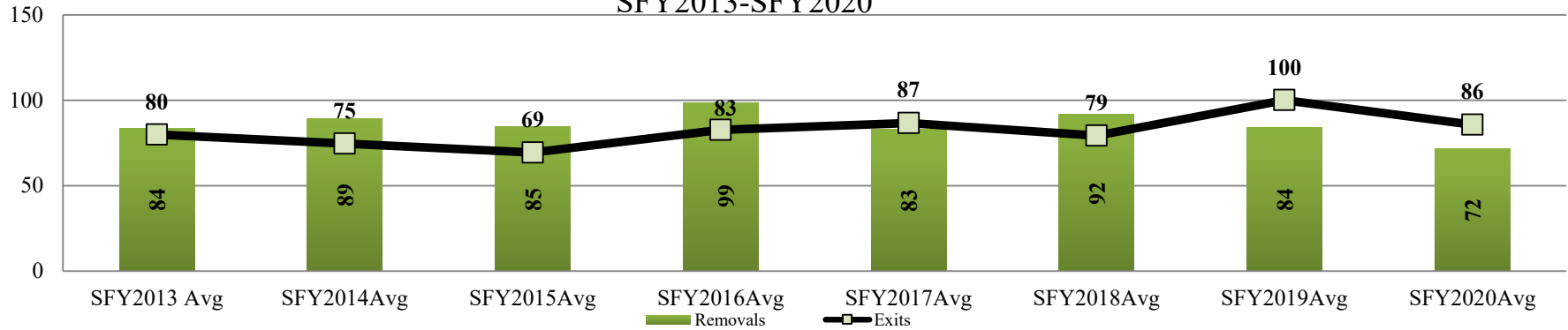
### Kansas City Region Monthly Exits SFY2015-SFY2020



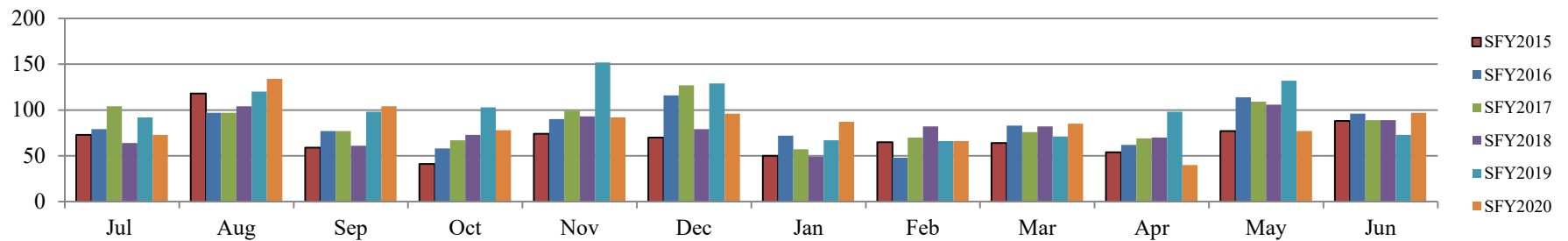
### Kansas City Region Monthly Removals SFY2015-SFY2020



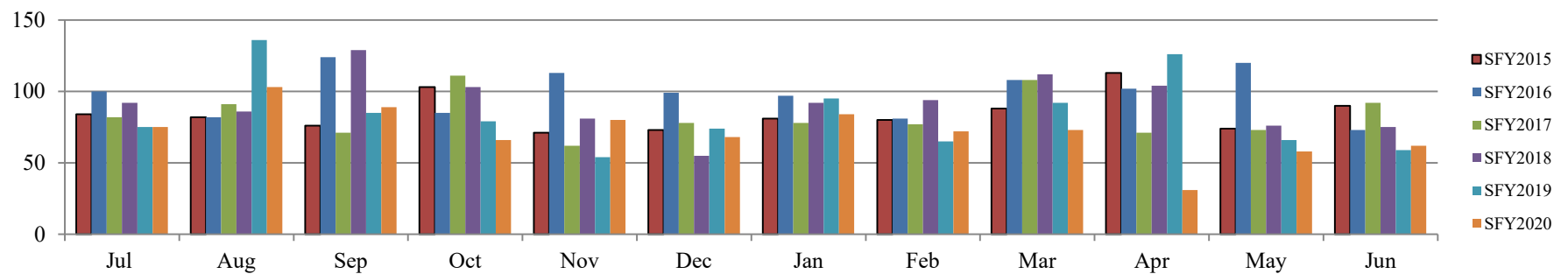
### East Region Fiscal Year Average Removals and Exits SFY2013-SFY2020



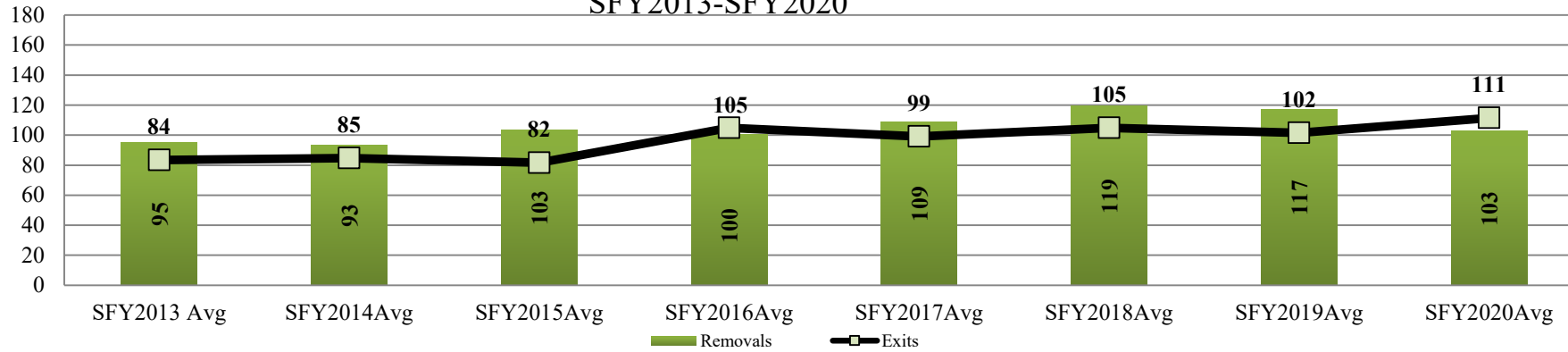
### East Region Monthly Exits SFY2015-SFY2020



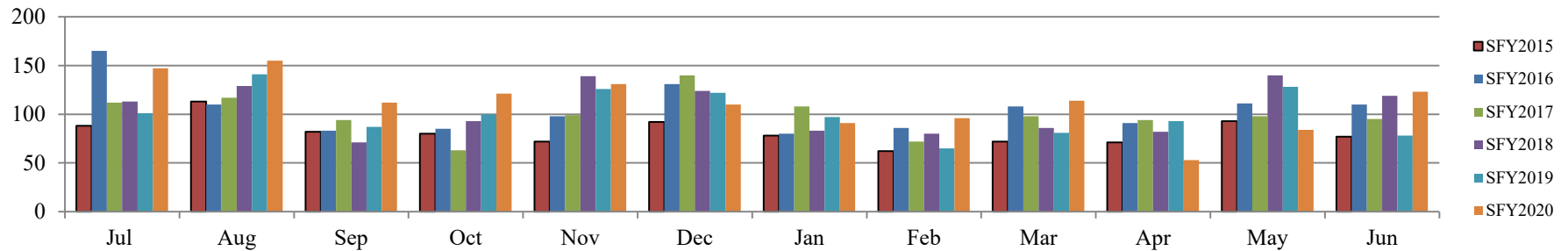
### East Region Monthly Removals SFY2015-SFY2020



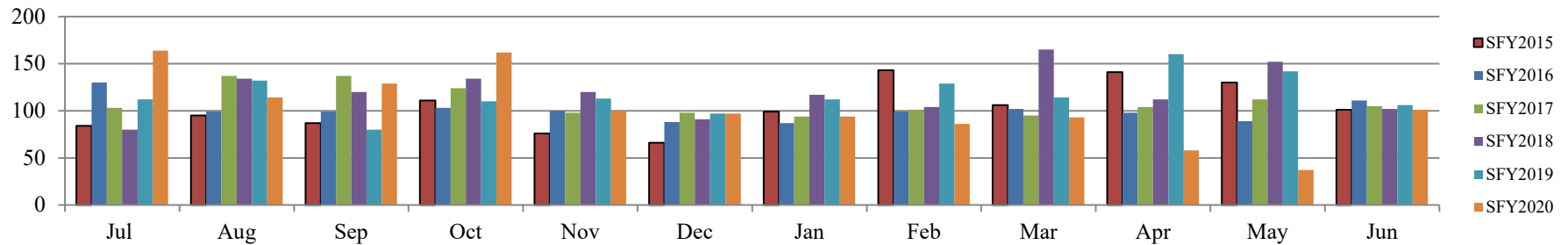
### West Region Fiscal Year Average Removals and Exits SFY2013-SFY2020



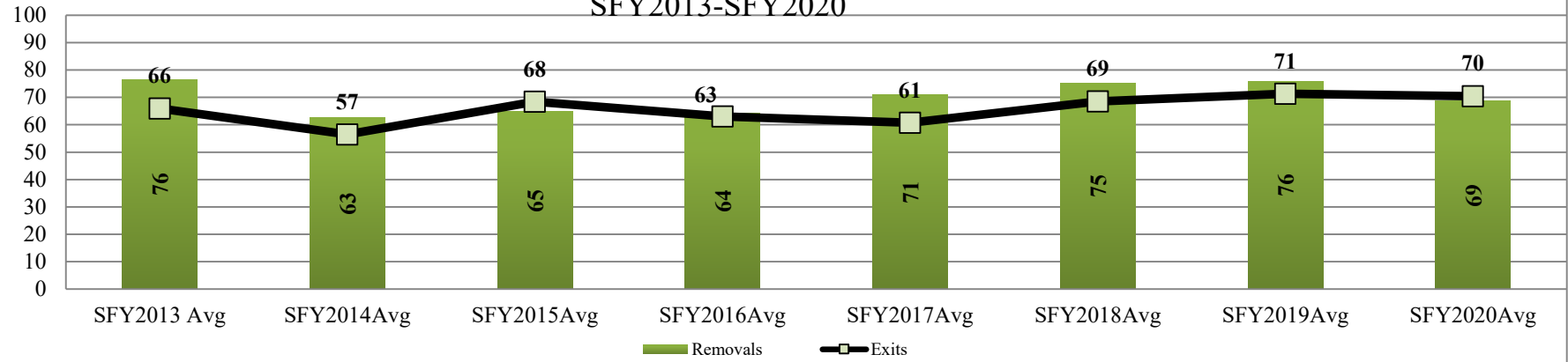
### West Region Monthly Exits SFY2015-SFY2020



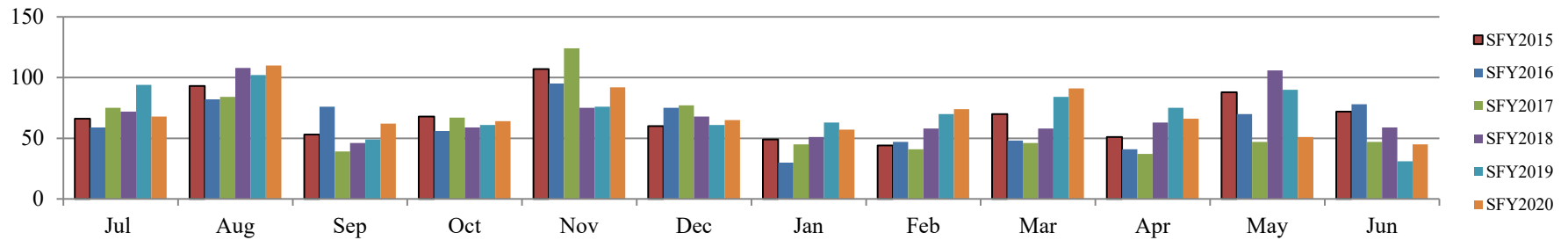
### West Region Monthly Removals SFY2015-SFY2020



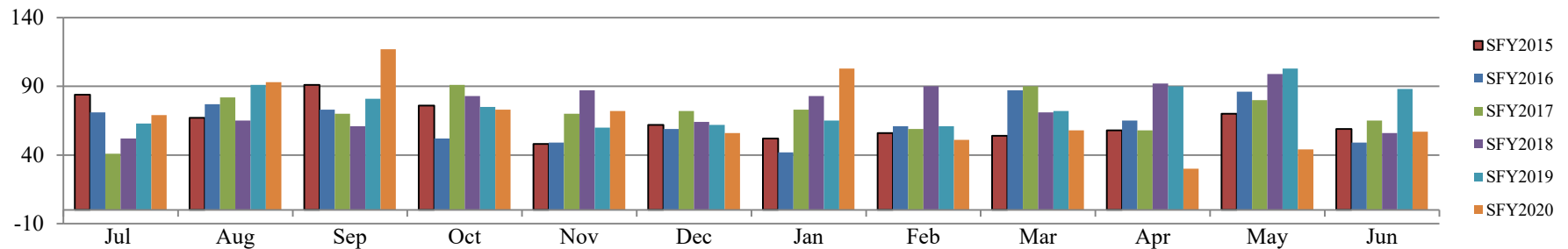
Wichita Region Fiscal Year Average Removals and Exits  
SFY2013-SFY2020



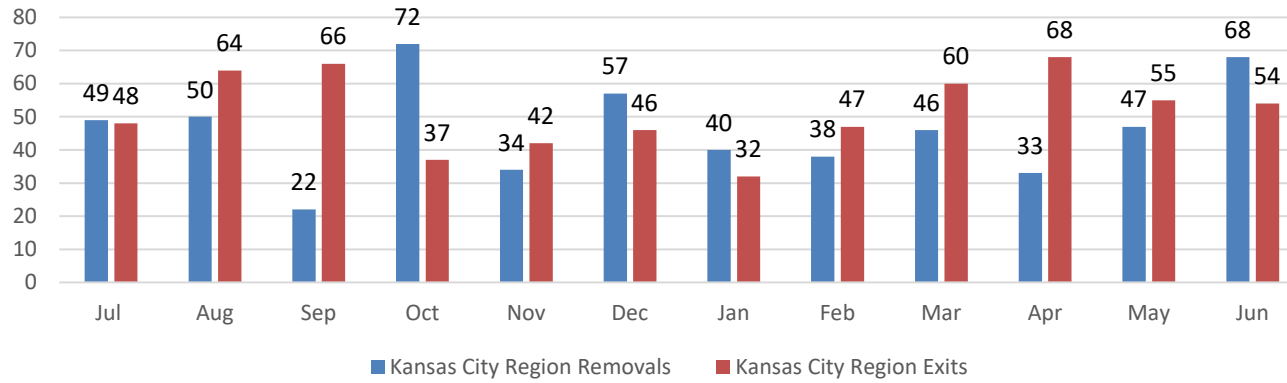
Wichita Region Monthly Exits  
SFY2015-SFY2020



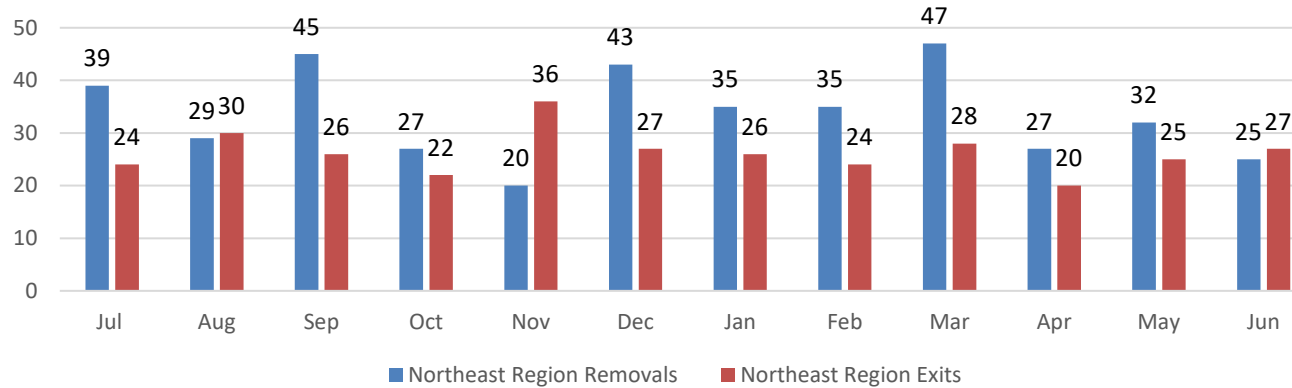
Wichita Region Monthly Removals  
SFY2015-SFY2020



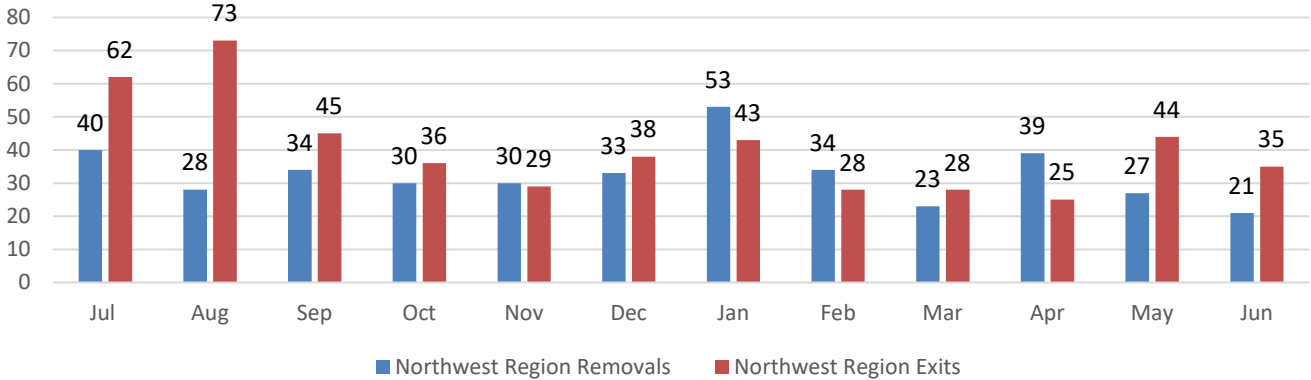
## Kansas City Region Removals and Exits SFY2021



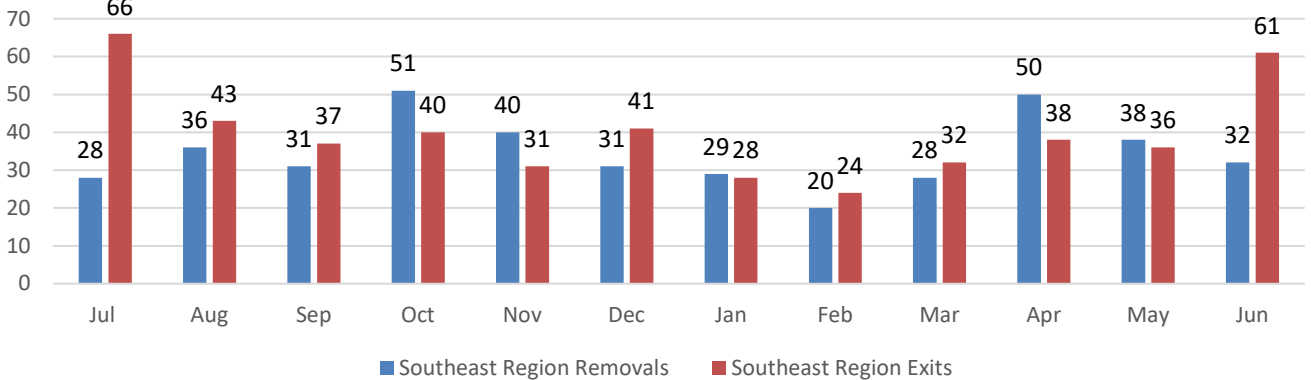
## Northeast Region Removals and Exits SFY2021



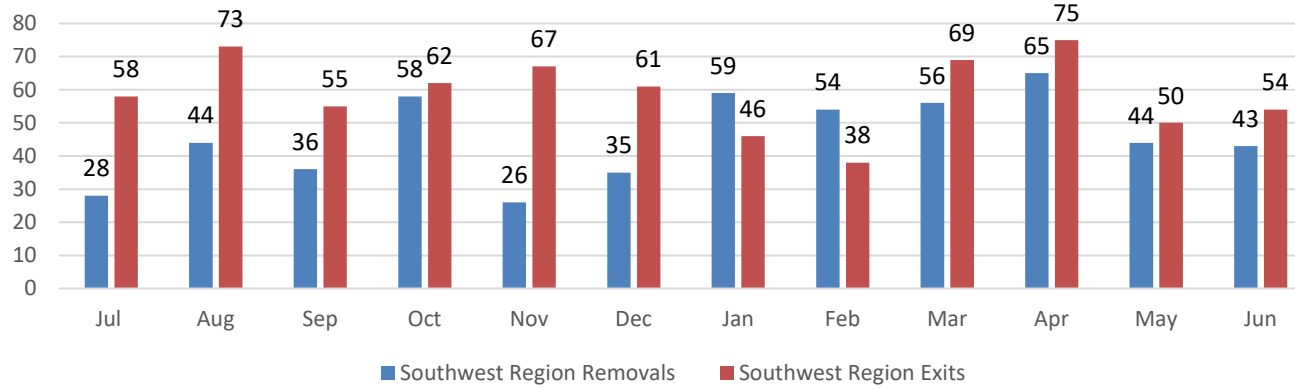
### Northwest Region Removals and Exits SFY2021



### Southeast Region Removals and Exits SFY2021



## Southwest Region Removals and Exits SFY2021



## Wichita Region Removals and Exits SFY2021

