



FY 2019 Removals, Exits and Out of Home Summary (FACTS)

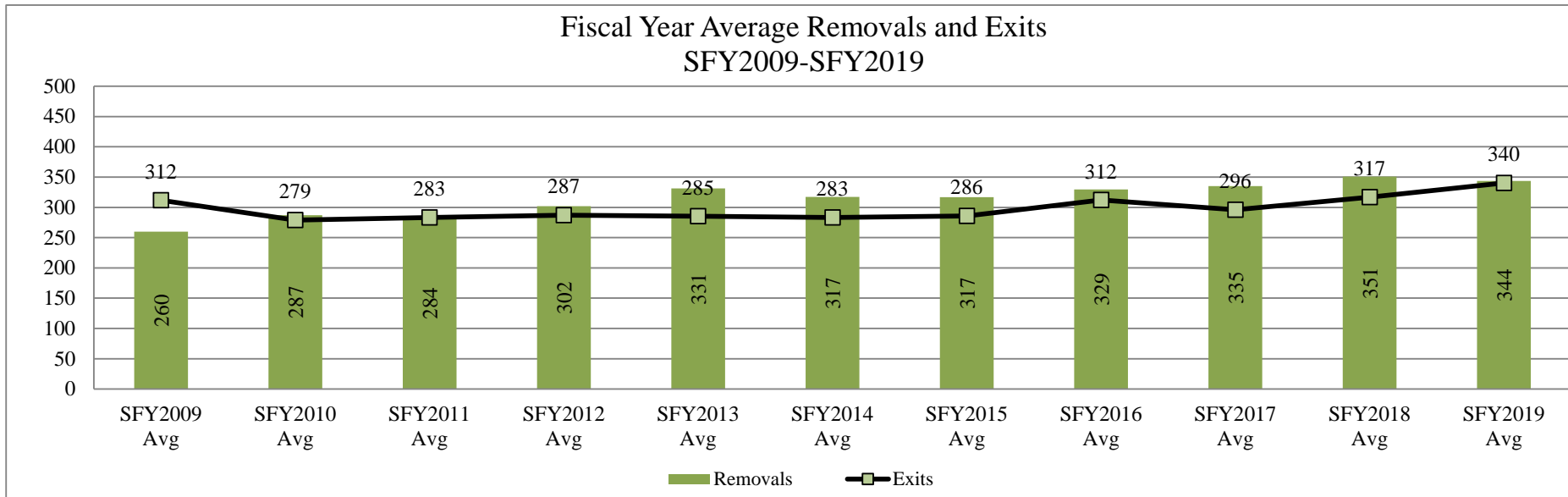
This report contains information on the number children removed into foster care in a given month, the number of children who exited foster care placement outside of their home in a given month, and the number of children who are in a foster care placement outside of their home (OOH) on the last day of each month. Information is provided by DCF Region and County.

Updated: 07/11/2019

By DCF Region	Type of Information	Jul	Aug	Sep	Oct	Nov	Dec	Jan	Feb	Mar	Apr	May	Jun	Fiscal year Total	Fiscal year Average
Kansas City Region	Removals	54	82	52	78	75	61	57	41	61	83	89	68	801	67
Kansas City Region	Exits	63	93	45	52	84	70	57	59	78	46	83	77	807	67
Kansas City Region	OOH Last Day of the Month	1694	1693	1705	1707	1702	1688	1680	1670	1657	1688	1700	1663		1,687
East Region	Removals	75	136	85	79	54	74	95	65	92	126	66	59	1,006	84
East Region	Exits	92	120	98	103	152	129	67	66	71	98	132	73	1,201	100
East Region	OOH Last Day of the Month	2139	2157	2172	2155	2061	1998	2010	2005	2041	2086	2013	1983		2,068
West Region	Removals	112	132	80	110	113	97	112	129	114	160	142	106	1,407	117
West Region	Exits	101	141	87	100	126	122	97	65	81	93	128	78	1,219	102
West Region	OOH Last Day of the Month	2046	2034	2020	2037	2023	1996	2010	2079	2087	2172	2204	2218		2,077
Wichita Region	Removals	63	91	81	75	60	62	65	61	72	90	103	88	911	76
Wichita Region	Exits	94	102	49	61	76	61	63	70	84	75	90	31	856	71
Wichita Region	OOH Last Day of the Month	1624	1610	1633	1640	1624	1646	1651	1656	1660	1664	1697	1714		1,652
State	Removals	304	441	298	342	302	294	329	296	339	459	400	321	4,125	344
State	Exits	350	456	279	316	438	382	284	260	314	312	433	259	4,083	340
State	OOH Last Day of the Month	7503	7494	7530	7539	7410	7328	7351	7410	7445	7610	7614	7578		7,484

*Beginning in SFY2015 Discharges were replaced by Exits from Out of Home Placements.

Fiscal Year Average Removals and Exits
SFY2009-SFY2019



Data Sources:

Removals- from FACTS

Exits- from FACTS

OOH Last Day of the Month- from FACTS

Information By County grouped in DCF Regions

County	Type of Information	Jul	Aug	Sep	Oct	Nov	Dec	Jan	Feb	Mar	Apr	May	Jun	Fiscal year Total	Fiscal year Average
AL ALLEN	Removals	1	4	3	4	4	14	5	2	4	7	1	3	52	4
AL ALLEN	Exits	6	1	1	4	12	2	2	0	3	7	9	4	51	5
AL ALLEN	OOH Last Day of the Month	92	95	95	95	87	97	100	102	104	107	96	95		97
AN ANDERSON	Removals	0	3	3	2	0	0	0	0	1	0	0	0	9	2
AN ANDERSON	Exits	0	0	1	5	0	1	0	0	0	0	2	0	9	2
AN ANDERSON	OOH Last Day of the Month	11	14	16	13	13	13	12	12	13	13	11	11		13
BB BOURBON	Removals	4	1	6	6	0	2	8	2	7	1	4	4	45	4
BB BOURBON	Exits	4	14	3	7	8	18	5	2	3	1	3	2	70	6
BB BOURBON	OOH Last Day of the Month	90	78	81	78	70	57	57	57	61	63	63	65		68
BR BROWN	Removals	5	6	7	3	1	5	0	2	1	7	6	3	46	4
BR BROWN	Exits	2	2	8	2	4	5	1	2	1	2	10	7	46	4
BR BROWN	OOH Last Day of the Month	94	96	99	92	89	89	90	84	84	89	87	81		90
CQ CHAUTAUQUA	Removals	0	0	0	0	0	0	0	0	0	0	0	0	0	0
CQ CHAUTAUQUA	Exits	1	0	0	0	0	0	0	0	0	0	0	0	1	1
CQ CHAUTAUQUA	OOH Last Day of the Month	3	3	3	3	3	3	3	3	3	3	3	3		3
CK CHEROKEE	Removals	2	8	2	3	5	4	4	0	2	10	10	2	52	5
CK CHEROKEE	Exits	4	8	9	1	9	6	2	2	6	2	5	2	56	5
CK CHEROKEE	OOH Last Day of the Month	59	60	59	59	55	53	55	55	50	58	60	62		57
CF COFFEY	Removals	1	0	0	0	4	0	0	8	0	0	3	0	16	4
CF COFFEY	Exits	0	1	1	1	0	0	0	0	0	4	4	0	11	2
CF COFFEY	OOH Last Day of the Month	13	12	11	10	14	14	14	22	22	19	18	19		16
CR CRAWFORD	Removals	5	12	17	2	1	3	0	3	8	12	6	7	76	7
CR CRAWFORD	Exits	19	7	8	8	14	24	4	6	6	11	4	4	115	10
CR CRAWFORD	OOH Last Day of the Month	155	161	170	164	159	142	134	130	136	143	144	145		149
DP DONIPHAN	Removals	1	2	1	0	0	5	0	0	0	2	0	1	12	2
DP DONIPHAN	Exits	1	3	0	0	0	0	0	0	0	2	1	1	8	2
DP DONIPHAN	OOH Last Day of the Month	31	29	30	30	30	35	35	35	38	37	36	35		33
FR FRANKLIN	Removals	9	12	0	2	5	4	2	2	4	3	3	2	48	4
FR FRANKLIN	Exits	9	16	3	11	8	6	10	2	8	5	9	2	89	7
FR FRANKLIN	OOH Last Day of the Month	133	128	127	124	112	106	94	96	95	96	93	92		108
JA JACKSON	Removals	1	13	0	1	1	1	5	0	5	3	2	0	32	4
JA JACKSON	Exits	1	4	5	2	0	6	2	11	4	3	2	5	45	4
JA JACKSON	OOH Last Day of the Month	53	64	59	59	61	56	59	48	49	49	48	43		54
JF JEFFERSON	Removals	0	6	0	0	1	0	2	0	0	5	2	0	16	3
JF JEFFERSON	Exits	3	1	1	0	0	0	0	1	2	5	2	2	17	2
JF JEFFERSON	OOH Last Day of the Month	24	30	32	32	32	32	34	33	32	36	34	32		32
LB LABETTE	Removals	5	5	2	1	0	1	0	5	9	4	1	4	37	4
LB LABETTE	Exits	1	3	3	12	10	8	2	7	1	10	1	2	60	5
LB LABETTE	OOH Last Day of the Month	76	77	78	68	56	49	47	40	50	46	44	46		56
LN LINN	Removals	2	1	5	0	6	0	1	0	1	4	3	0	23	3
LN LINN	Exits	1	5	2	2	2	2	2	1	0	3	0	5	25	3
LN LINN	OOH Last Day of the Month	33	29	33	34	36	36	33	32	33	37	37	32		34
MS MARSHALL	Removals	4	7	2	3	0	0	3	4	2	4	2	0	31	3
MS MARSHALL	Exits	1	1	2	0	0	3	7	4	1	2	0	0	21	3
MS MARSHALL	OOH Last Day of the Month	38	45	45	49	49	46	42	43	42	44	46	46		45

MI MIAMI	Removals	5	3	2	4	2	2	2	1	1	3	0	0	25	3
MI MIAMI	Exits	2	6	0	6	2	5	1	4	5	5	5	3	44	4
MI MIAMI	OOH Last Day of the Month	97	96	98	97	97	93	92	89	86	83	81	73		90
MG MONTGOMERY	Removals	7	5	9	1	4	7	9	5	11	8	3	3	72	6
MG MONTGOMERY	Exits	10	7	5	6	12	19	1	4	4	8	9	1	86	7
MG MONTGOMERY	OOH Last Day of the Month	172	169	175	169	161	149	157	160	164	163	159	163		163
NM NEMAHA	Removals	0	1	1	0	0	1	2	1	0	7	1	0	14	2
NM NEMAHA	Exits	0	0	0	0	0	0	1	0	0	1	5	5	12	3
NM NEMAHA	OOH Last Day of the Month	12	13	14	13	12	13	13	15	16	23	18	14		15
NO NEOSHO	Removals	2	12	7	6	7	4	7	4	6	13	5	2	75	6
NO NEOSHO	Exits	4	4	1	1	7	4	6	1	3	3	8	5	47	4
NO NEOSHO	OOH Last Day of the Month	59	63	69	74	76	74	81	83	87	94	95	90		79
OS OSAGE	Removals	0	0	4	4	1	0	5	1	2	10	1	3	31	3
OS OSAGE	Exits	2	1	2	6	0	2	1	3	3	0	0	0	20	3
OS OSAGE	OOH Last Day of the Month	26	23	26	26	25	20	26	24	24	35	35	37		27
PT POTTAWATOMIE	Removals	0	0	1	4	0	0	1	3	2	1	1	2	15	2
PT POTTAWATOMIE	Exits	1	0	2	0	3	6	2	2	0	6	5	2	29	3
PT POTTAWATOMIE	OOH Last Day of the Month	35	34	35	36	34	29	28	31	32	27	21	21		30
SN SHAWNEE	Removals	16	29	10	32	11	18	27	21	22	14	10	21	231	19
SN SHAWNEE	Exits	19	28	39	24	54	9	14	11	18	16	42	18	292	24
SN SHAWNEE	OOH Last Day of the Month	753	759	738	755	716	718	724	734	742	739	709	703		733
WB WABAUNSEE	Removals	0	0	2	0	0	1	0	0	1	1	1	0	6	1
WB WABAUNSEE	Exits	0	0	0	2	2	0	0	1	0	0	1	0	6	2
WB WABAUNSEE	OOH Last Day of the Month	12	12	14	11	9	10	11	10	11	12	12	12		11
WL WILSON	Removals	3	0	1	1	1	0	10	1	3	7	1	0	28	3
WL WILSON	Exits	1	3	2	3	5	0	3	1	3	2	4	3	30	3
WL WILSON	OOH Last Day of the Month	52	50	48	48	49	49	53	52	53	55	49	46		50
WO WOODSON	Removals	2	6	0	0	0	2	2	0	0	0	0	2	14	3
WO WOODSON	Exits	0	5	0	0	0	3	1	1	0	0	1	0	11	2
WO WOODSON	OOH Last Day of the Month	16	17	17	16	16	15	16	15	14	15	14	17		16
AT ATCHISON	Removals	0	0	1	5	3	0	2	3	1	1	4	4	24	3
AT ATCHISON	Exits	2	1	5	1	3	0	1	4	0	0	1	0	18	2
AT ATCHISON	OOH Last Day of the Month	57	55	56	54	54	54	54	53	54	55	59	62		56
DG DOUGLAS	Removals	7	8	4	12	3	8	9	1	4	5	15	9	85	7
DG DOUGLAS	Exits	7	9	4	6	7	17	5	5	5	4	13	11	93	8
DG DOUGLAS	OOH Last Day of the Month	200	202	202	201	195	195	187	181	179	186	187	183		192
JO JOHNSON	Removals	28	31	19	25	30	25	15	16	23	36	24	24	296	25
JO JOHNSON	Exits	22	28	7	8	36	15	14	21	45	16	32	33	277	23
JO JOHNSON	OOH Last Day of the Month	565	564	579	596	592	599	602	602	582	600	595	568		587
LV LEAVENWORTH	Removals	5	9	3	5	9	8	6	9	9	13	26	11	113	9
LV LEAVENWORTH	Exits	11	6	6	7	11	12	2	9	6	7	10	11	98	8
LV LEAVENWORTH	OOH Last Day of the Month	183	189	188	183	184	182	188	188	196	198	222	214		193
WY WYANDOTTE	Removals	14	34	25	31	30	20	25	12	24	28	20	20	283	24
WY WYANDOTTE	Exits	21	49	23	30	27	26	35	20	22	19	27	22	321	27
WY WYANDOTTE	OOH Last Day of the Month	689	683	680	673	677	658	649	646	646	649	637	636		660
BT BARTON	Removals	7	12	4	6	7	6	16	4	4	5	7	3	81	7
BT BARTON	Exits	5	19	3	4	2	12	4	7	2	4	13	9	84	7
BT BARTON	OOH Last Day of the Month	145	133	134	137	139	133	148	142	147	146	140	133		140

CS CHASE	Removals	0	0	0	0	1	0	1	1	0	2	1	0	6	1
CS CHASE	Exits	0	2	0	0	0	0	0	0	0	0	1	0	3	2
CS CHASE	OOH Last Day of the Month	12	6	6	6	7	7	8	13	13	15	16	15		10
CN CHEYENNE	Removals	0	0	0	0	0	0	0	0	0	0	2	0	2	2
CN CHEYENNE	Exits	0	0	0	0	0	0	0	0	1	0	1	0	2	1
CN CHEYENNE	OOH Last Day of the Month	1	1	1	1	1	1	1	1	1	1	2	2		1
CA CLARK	Removals	4	0	0	0	0	0	4	0	0	0	0	0	8	4
CA CLARK	Exits	0	0	0	0	0	0	0	0	0	1	1	0	2	1
CA CLARK	OOH Last Day of the Month	8	8	8	8	8	8	12	12	12	11	10	10		10
CY CLAY	Removals	0	0	0	1	0	1	3	1	4	3	1	0	14	2
CY CLAY	Exits	1	0	1	0	0	1	0	0	1	0	3	0	7	1
CY CLAY	OOH Last Day of the Month	11	9	9	9	10	13	15	16	18	21	19	20		14
CD CLOUD	Removals	6	4	2	5	6	0	3	4	2	8	7	20	67	6
CD CLOUD	Exits	6	6	1	2	0	5	1	0	0	6	16	0	43	5
CD CLOUD	OOH Last Day of the Month	54	52	50	51	54	50	52	57	60	66	57	77		57
CM COMANCHE	Removals	0	0	0	0	0	0	0	0	1	0	0	1	2	1
CM COMANCHE	Exits	0	0	0	0	0	0	0	0	0	0	0	0	0	0
CM COMANCHE	OOH Last Day of the Month	2	2	2	2	2	2	2	2	3	3	3	4		2
DC DECATUR	Removals	2	0	0	0	2	0	0	0	0	0	0	0	4	2
DC DECATUR	Exits	0	0	0	0	0	0	0	0	0	0	0	0	0	0
DC DECATUR	OOH Last Day of the Month	2	2	2	2	4	4	4	4	4	4	4	4		3
DK DICKINSON	Removals	1	3	6	1	8	0	3	6	13	2	3	3	49	4
DK DICKINSON	Exits	5	5	6	2	3	0	6	1	1	7	4	0	40	4
DK DICKINSON	OOH Last Day of the Month	50	48	47	51	56	57	56	59	70	66	62	63		57
ED EDWARDS	Removals	1	0	0	2	1	0	0	2	0	0	0	0	6	2
ED EDWARDS	Exits	0	3	0	1	0	1	0	0	3	1	0	0	9	2
ED EDWARDS	OOH Last Day of the Month	16	14	14	14	15	14	14	16	13	13	12	12		14
EL ELLIS	Removals	6	8	2	2	2	5	4	8	4	4	3	5	53	4
EL ELLIS	Exits	2	4	2	4	9	7	5	3	3	3	4	2	48	4
EL ELLIS	OOH Last Day of the Month	76	79	80	79	71	70	68	69	68	71	76	77		74
EW ELLSWORTH	Removals	1	0	1	3	0	0	0	0	8	1	2	0	16	3
EW ELLSWORTH	Exits	5	1	3	1	0	0	1	0	0	6	3	0	20	3
EW ELLSWORTH	OOH Last Day of the Month	18	16	15	16	16	16	13	13	21	15	17	15		16
FI FINNEY	Removals	7	6	6	18	12	11	12	6	3	16	5	0	102	9
FI FINNEY	Exits	4	4	2	2	8	6	3	2	11	4	5	9	60	5
FI FINNEY	OOH Last Day of the Month	84	87	90	105	110	115	128	132	124	131	141	130		115
FO FORD	Removals	5	10	8	5	4	0	5	9	9	10	6	5	76	7
FO FORD	Exits	10	6	8	1	7	10	5	6	2	5	3	5	68	6
FO FORD	OOH Last Day of the Month	123	126	123	131	128	115	116	119	123	133	133	133		125
GE GEARY	Removals	3	8	5	4	10	8	7	14	2	5	9	9	84	7
GE GEARY	Exits	5	3	5	3	8	8	3	8	2	6	10	3	64	5
GE GEARY	OOH Last Day of the Month	83	89	87	91	92	93	99	107	98	103	101	105		96
GO GOVE	Removals	1	0	0	0	0	0	0	0	0	1	0	0	2	1
GO GOVE	Exits	0	0	0	1	1	0	0	0	0	0	0	0	2	1
GO GOVE	OOH Last Day of the Month	2	2	2	1	0	0	0	0	0	0	1	1		2
GH GRAHAM	Removals	0	0	0	0	0	0	0	1	0	0	0	0	1	1
GH GRAHAM	Exits	1	1	0	0	2	0	0	0	0	0	0	0	4	1
GH GRAHAM	OOH Last Day of the Month	4	3	3	3	1	1	1	2	2	2	2	2		2

GT GRANT	Removals	0	0	1	1	0	0	0	2	0	0	6	3	13	3
GT GRANT	Exits	0	0	1	1	0	0	1	0	2	0	1	0	6	1
GT GRANT	OOH Last Day of the Month	18	18	18	18	18	18	17	19	19	17	17	24		18
GY GRAY	Removals	0	4	0	0	0	0	0	0	0	0	0	0	4	4
GY GRAY	Exits	0	1	1	3	0	0	0	0	0	0	0	0	5	2
GY GRAY	OOH Last Day of the Month	11	14	13	10	10	10	10	10	10	10	10	10		11
GL GREELEY	Removals	0	0	0	1	0	0	0	0	0	0	0	0	1	1
GL GREELEY	Exits	0	0	0	0	1	0	0	0	0	1	0	0	2	1
GL GREELEY	OOH Last Day of the Month	7	7	7	8	7	7	7	7	7	3	3	3		6
HM HAMILTON	Removals	0	0	0	0	1	0	0	0	2	3	0	0	6	2
HM HAMILTON	Exits	1	0	0	0	0	0	0	0	0	0	0	0	1	1
HM HAMILTON	OOH Last Day of the Month	0	0	0	0	1	1	1	1	3	6	6	6		3
HV HARVEY	Removals	5	2	1	1	2	0	0	4	3	0	0	0	18	3
HV HARVEY	Exits	1	6	7	12	4	8	2	1	0	5	2	3	51	5
HV HARVEY	OOH Last Day of the Month	105	102	97	86	84	72	70	72	76	74	72	71		82
HS HASKELL	Removals	0	0	0	0	0	1	0	0	0	0	0	0	1	1
HS HASKELL	Exits	0	0	0	2	0	0	0	0	0	0	0	0	2	2
HS HASKELL	OOH Last Day of the Month	5	5	5	3	3	4	4	4	4	4	4	4		4
HG HODGEMAN	Removals	0	0	0	0	0	0	0	1	0	0	0	0	1	1
HG HODGEMAN	Exits	0	0	0	0	0	0	0	0	0	0	0	1	1	1
HG HODGEMAN	OOH Last Day of the Month	2	2	2	2	2	2	2	3	3	3	3	2		2
JW JEWELL	Removals	3	3	0	0	0	0	0	0	1	0	0	0	7	2
JW JEWELL	Exits	0	2	0	0	2	4	6	0	0	0	0	0	14	4
JW JEWELL	OOH Last Day of the Month	12	15	14	14	12	8	4	3	2	2	2	2		8
KE KEARNY	Removals	0	1	0	1	3	2	0	0	0	1	0	2	10	2
KE KEARNY	Exits	1	1	0	5	0	1	2	0	1	0	1	0	12	2
KE KEARNY	OOH Last Day of the Month	10	11	12	6	9	11	9	9	8	8	9	10		9
KW KIOWA	Removals	0	0	0	0	0	0	0	0	1	0	0	0	1	1
KW KIOWA	Exits	0	0	0	0	0	0	0	0	1	0	2	0	3	2
KW KIOWA	OOH Last Day of the Month	0	0	0	0	0	0	0	0	0	0	0	0		0
LE LANE	Removals	0	0	0	0	0	0	0	1	4	0	5	0	10	3
LE LANE	Exits	1	0	0	0	0	0	0	0	1	1	3	0	6	2
LE LANE	OOH Last Day of the Month	3	3	3	3	3	3	3	4	7	6	9	8		5
LC LINCOLN	Removals	0	0	0	0	0	0	0	5	2	0	1	1	9	2
LC LINCOLN	Exits	0	0	0	0	0	2	0	0	0	1	0	0	3	2
LC LINCOLN	OOH Last Day of the Month	3	3	3	3	3	1	1	6	8	7	8	9		5
LG LOGAN	Removals	0	0	0	0	0	0	0	0	0	0	1	2	3	2
LG LOGAN	Exits	1	0	0	0	0	0	0	1	0	0	1	0	3	1
LG LOGAN	OOH Last Day of the Month	4	4	3	3	3	4	4	3	3	3	3	5		4
LY LYON	Removals	11	8	6	4	7	6	2	2	6	7	8	6	73	6
LY LYON	Exits	6	13	1	5	7	6	0	5	0	3	12	7	65	7
LY LYON	OOH Last Day of the Month	158	163	163	162	161	164	161	159	163	171	169	164		163
MN MARION	Removals	7	0	0	4	3	0	4	2	4	6	0	1	31	4
MN MARION	Exits	4	1	6	1	0	5	4	1	3	2	2	1	30	3
MN MARION	OOH Last Day of the Month	39	38	32	35	37	32	32	33	34	39	36	35		35
MP MCPHERSON	Removals	2	2	1	0	1	4	2	2	2	6	1	3	26	2
MP MCPHERSON	Exits	3	3	2	1	0	1	0	1	0	0	2	5	18	2
MP MCPHERSON	OOH Last Day of the Month	31	27	26	25	26	29	31	32	34	40	40	37		32

ME MEADE	Removals	0	0	0	0	0	0	0	0	0	2	0	0	2	2
ME MEADE	Exits	0	0	0	0	0	0	2	0	0	0	0	2	4	2
ME MEADE	OOH Last Day of the Month	3	3	3	3	3	3	1	1	1	3	3	1		2
MC MITCHELL	Removals	0	1	0	1	0	0	0	0	0	2	2	1	7	1
MC MITCHELL	Exits	2	0	0	0	0	1	1	0	0	0	0	0	4	1
MC MITCHELL	OOH Last Day of the Month	9	9	9	10	10	9	8	8	8	11	11	13		10
MR MORRIS	Removals	1	5	1	0	0	0	1	0	1	0	0	1	10	2
MR MORRIS	Exits	0	2	1	0	0	0	3	0	1	5	0	0	12	2
MR MORRIS	OOH Last Day of the Month	14	17	19	18	18	18	17	16	16	10	9	10		15
MT MORTON	Removals	1	1	0	1	1	0	0	0	0	0	1	1	6	1
MT MORTON	Exits	0	0	0	1	0	0	0	0	1	0	0	0	2	1
MT MORTON	OOH Last Day of the Month	5	6	6	6	6	7	7	7	6	6	6	8		6
NS NESS	Removals	0	0	0	0	0	1	0	0	0	0	0	0	1	1
NS NESS	Exits	0	0	0	0	0	0	0	0	0	0	0	0	0	0
NS NESS	OOH Last Day of the Month	2	2	2	2	2	3	3	3	3	3	3	3		3
NT NORTON	Removals	0	0	1	1	1	0	0	0	0	5	0	0	8	2
NT NORTON	Exits	0	1	0	0	0	0	3	1	1	0	2	3	11	2
NT NORTON	OOH Last Day of the Month	19	19	20	21	22	21	19	17	17	22	19	17		19
OB OSBORNE	Removals	0	0	0	0	3	0	0	1	0	1	1	0	6	2
OB OSBORNE	Exits	0	0	0	0	0	0	0	0	0	0	0	2	2	2
OB OSBORNE	OOH Last Day of the Month	2	2	2	2	5	5	5	6	6	7	8	6		5
OT OTTAWA	Removals	0	4	1	0	0	0	0	0	0	0	0	0	5	3
OT OTTAWA	Exits	1	3	3	0	0	1	0	0	0	0	0	0	8	2
OT OTTAWA	OOH Last Day of the Month	10	12	12	12	12	10	11	11	11	10	11	11		11
PN PAWNEE	Removals	4	0	0	2	0	0	0	0	1	0	4	0	11	3
PN PAWNEE	Exits	1	3	3	1	0	1	2	0	1	2	0	2	16	2
PN PAWNEE	OOH Last Day of the Month	27	24	21	22	22	21	19	19	21	19	23	21		22
PL PHILLIPS	Removals	0	0	0	0	0	2	1	0	0	1	1	0	5	1
PL PHILLIPS	Exits	0	1	0	2	3	3	3	0	0	0	0	0	12	2
PL PHILLIPS	OOH Last Day of the Month	33	31	31	29	26	25	22	23	23	20	21	21		25
RA RAWLINS	Removals	0	0	0	0	0	0	0	4	0	0	0	0	4	4
RA RAWLINS	Exits	0	0	0	0	0	0	0	0	0	0	0	0	0	0
RA RAWLINS	OOH Last Day of the Month	1	1	1	1	1	1	1	5	5	5	5	5		3
RN RENO	Removals	8	8	10	23	15	12	17	14	14	22	26	7	176	15
RN RENO	Exits	10	12	8	8	26	14	4	10	14	7	9	4	126	11
RN RENO	OOH Last Day of the Month	291	284	283	296	288	289	298	305	296	309	331	335		300
RP REPUBLIC	Removals	0	0	0	0	0	0	0	2	0	0	2	0	4	2
RP REPUBLIC	Exits	0	1	0	0	3	0	2	0	0	0	0	0	6	2
RP REPUBLIC	OOH Last Day of the Month	8	7	7	7	4	4	2	4	4	4	6	6		5
RC RICE	Removals	0	0	0	3	0	2	1	2	3	9	1	1	22	3
RC RICE	Exits	1	2	2	2	3	2	2	1	2	0	0	0	17	2
RC RICE	OOH Last Day of the Month	29	27	25	25	23	23	23	23	25	34	35	36		27
RL RILEY	Removals	3	6	3	1	6	3	0	5	6	5	10	7	55	5
RL RILEY	Exits	4	6	0	5	2	2	7	4	1	4	4	3	42	4
RL RILEY	OOH Last Day of the Month	56	54	57	53	62	59	50	55	56	61	68	71		59
RO ROOKS	Removals	0	5	7	0	2	0	0	1	1	0	0	2	18	3
RO ROOKS	Exits	0	0	0	4	1	0	1	0	2	0	2	1	11	2
RO ROOKS	OOH Last Day of the Month	10	13	20	16	17	18	17	18	17	17	15	16		16

RH RUSH	Removals	2	0	1	0	1	3	0	1	0	0	0	1	9	2
RH RUSH	Exits	0	3	0	1	0	0	0	1	0	0	0	1	6	2
RH RUSH	OOH Last Day of the Month	13	10	11	11	11	13	14	14	14	14	14	14		13
RS RUSSELL	Removals	1	0	1	2	2	2	1	2	0	1	2	0	14	2
RS RUSSELL	Exits	0	0	1	2	2	0	3	1	0	1	3	1	14	2
RS RUSSELL	OOH Last Day of the Month	28	30	30	30	30	32	30	32	31	31	30	29		30
SA SALINE	Removals	12	6	3	10	4	13	10	13	8	15	11	9	114	10
SA SALINE	Exits	18	11	8	17	18	8	11	6	15	13	9	10	144	12
SA SALINE	OOH Last Day of the Month	213	210	203	201	188	189	189	196	192	196	200	197		198
SC SCOTT	Removals	1	1	1	0	0	3	5	2	0	3	0	3	19	2
SC SCOTT	Exits	1	1	0	0	1	0	0	2	0	1	2	0	8	1
SC SCOTT	OOH Last Day of the Month	21	21	22	22	21	24	29	30	27	30	28	30		25
SW SEWARD	Removals	3	14	0	3	0	2	5	5	0	2	8	4	46	5
SW SEWARD	Exits	0	5	8	4	9	4	0	0	3	1	1	1	36	4
SW SEWARD	OOH Last Day of the Month	50	59	51	51	41	42	41	46	42	44	53	56		48
SD SHERIDAN	Removals	0	0	0	0	0	0	0	0	0	0	0	0	0	0
SD SHERIDAN	Exits	0	0	0	0	0	0	0	0	0	0	0	0	0	0
SD SHERIDAN	OOH Last Day of the Month	1	1	1	1	1	1	1	1	1	1	1	1		1
SH SHERMAN	Removals	0	1	0	2	0	0	0	0	0	1	3	0	7	2
SH SHERMAN	Exits	0	2	1	1	3	4	0	2	0	1	2	0	16	2
SH SHERMAN	OOH Last Day of the Month	31	30	30	29	26	22	22	20	20	23	23	23		25
SM SMITH	Removals	0	0	0	0	1	0	1	0	1	2	0	1	6	1
SM SMITH	Exits	0	0	0	1	0	0	0	0	0	0	1	0	2	1
SM SMITH	OOH Last Day of the Month	9	9	9	8	9	8	9	10	11	14	13	14		10
SF STAFFORD	Removals	0	1	5	0	1	1	0	0	2	1	1	1	13	2
SF STAFFORD	Exits	1	1	1	0	0	0	7	0	0	1	1	1	13	2
SF STAFFORD	OOH Last Day of the Month	18	20	28	28	28	27	21	21	23	25	24	23		24
ST STANTON	Removals	2	4	0	0	4	0	0	0	0	0	0	0	10	3
ST STANTON	Exits	0	0	0	0	0	0	2	0	0	0	0	0	2	2
ST STANTON	OOH Last Day of the Month	5	9	9	9	13	13	12	11	11	11	11	11		10
SV STEVENS	Removals	0	1	3	0	0	0	2	0	0	0	0	0	6	2
SV STEVENS	Exits	0	0	0	0	1	0	0	0	1	0	0	2	4	1
SV STEVENS	OOH Last Day of the Month	1	2	5	5	5	4	6	6	5	5	5	3		4
TH THOMAS	Removals	1	3	0	1	1	5	0	2	2	1	0	2	18	2
TH THOMAS	Exits	0	0	0	0	0	3	0	1	0	0	1	0	5	2
TH THOMAS	OOH Last Day of the Month	19	20	21	22	23	25	24	26	26	27	26	28		24
TR TREGO	Removals	1	0	0	0	0	3	2	0	0	4	0	1	11	2
TR TREGO	Exits	0	5	1	0	0	2	1	0	3	0	0	0	12	2
TR TREGO	OOH Last Day of the Month	10	5	4	4	4	5	6	6	3	6	6	7		6
WA WALLACE	Removals	0	0	0	0	1	0	0	0	0	2	0	0	3	2
WA WALLACE	Exits	0	0	0	0	0	0	0	0	0	0	0	0	0	0
WA WALLACE	OOH Last Day of the Month	2	2	2	2	3	3	3	3	3	5	5	5		3
WS WASHINGTON	Removals	0	0	0	0	0	0	0	0	0	0	1	0	1	1
WS WASHINGTON	Exits	0	1	1	0	0	0	0	0	2	0	0	0	4	1
WS WASHINGTON	OOH Last Day of the Month	5	4	3	3	3	3	3	3	1	1	2	2		3
WH WICHITA	Removals	0	0	0	1	0	1	0	0	0	1	0	0	3	1
WH WICHITA	Exits	0	0	0	0	0	0	0	0	0	1	1	0	2	1
WH WICHITA	OOH Last Day of the Month	2	2	2	3	3	4	4	4	4	4	2	2		3

BA BARBER	Removals	2	2	0	1	0	0	0	0	0	0	0	0	5	2
BA BARBER	Exits	0	0	0	1	0	1	0	0	0	1	0	3	1	
BA BARBER	OOH Last Day of the Month	20	22	22	23	22	21	21	21	21	21	21	20		21
BU BUTLER	Removals	4	6	7	13	18	23	7	6	16	6	13	3	122	10
BU BUTLER	Exits	7	11	5	5	5	8	12	11	14	16	11	1	106	9
BU BUTLER	OOH Last Day of the Month	159	152	151	156	171	186	182	182	182	175	174	173		170
CL COWLEY	Removals	3	1	6	2	8	11	7	3	7	7	5	8	68	6
CL COWLEY	Exits	14	7	9	4	9	7	4	3	7	2	3	3	72	6
CL COWLEY	OOH Last Day of the Month	117	109	104	103	101	107	110	107	108	113	112	118		109
EK ELK	Removals	3	1	0	0	0	0	0	0	0	0	0	3	7	2
EK ELK	Exits	0	0	0	0	0	3	0	3	0	0	0	0	6	3
EK ELK	OOH Last Day of the Month	13	14	14	14	14	11	11	11	11	11	11	11		12
GW GREENWOOD	Removals	1	0	0	5	0	1	5	0	1	3	2	1	19	2
GW GREENWOOD	Exits	4	3	2	1	4	3	2	1	2	0	0	2	24	2
GW GREENWOOD	OOH Last Day of the Month	31	28	28	31	26	27	30	33	26	28	29	29		29
HP HARPER	Removals	0	0	1	0	0	1	6	0	0	2	2	1	13	2
HP HARPER	Exits	1	0	0	1	0	1	0	0	0	1	0	0	4	1
HP HARPER	OOH Last Day of the Month	21	18	19	19	18	19	20	20	25	27	28	29		22
KM KINGMAN	Removals	1	3	1	3	10	0	0	0	3	1	3	4	29	3
KM KINGMAN	Exits	0	8	0	1	0	0	2	2	3	0	4	1	21	3
KM KINGMAN	OOH Last Day of the Month	26	23	24	26	29	34	33	36	38	36	38	36		32
PR PRATT	Removals	0	1	1	1	0	0	0	0	0	4	1	3	11	2
PR PRATT	Exits	3	5	0	0	0	0	1	3	2	6	1	0	21	3
PR PRATT	OOH Last Day of the Month	31	27	27	28	28	28	27	26	26	25	22	25		27
SG SEDGWICK	Removals	45	61	57	40	23	25	38	49	44	62	70	65	579	48
SG SEDGWICK	Exits	58	55	28	41	43	29	38	44	49	49	61	21	516	43
SG SEDGWICK	OOH Last Day of the Month	1102	1110	1138	1132	1115	1122	1130	1135	1134	1142	1174	1192		1,136
SU SUMNER	Removals	4	16	8	10	1	1	2	3	1	5	7	0	58	5
SU SUMNER	Exits	7	13	5	7	15	9	4	3	7	1	9	3	83	7
SU SUMNER	Exits	104	107	106	108	100	91	87	85	89	86	88	81		94

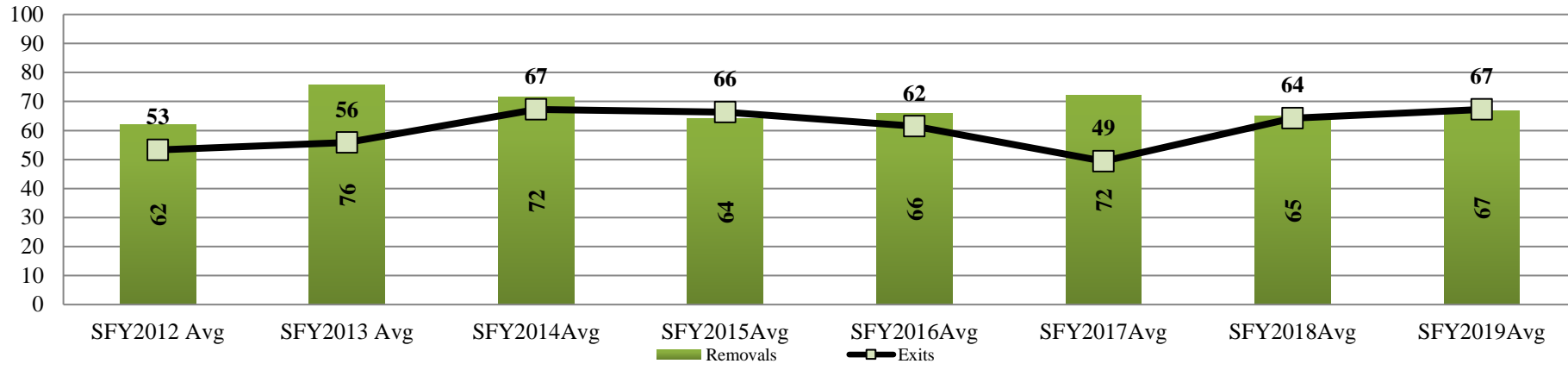
Data Sources:

Removals- from FACTS

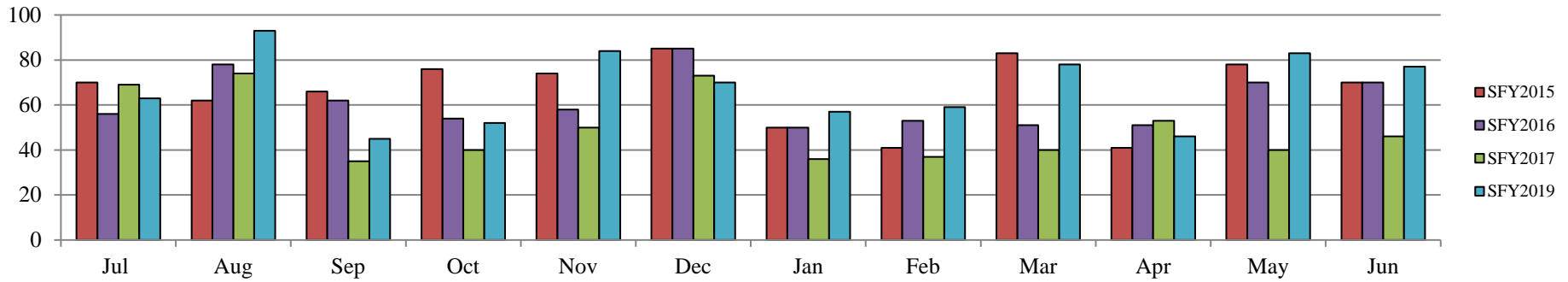
Exits- from FACTS

OOH Last Day of the Month- from FACTS

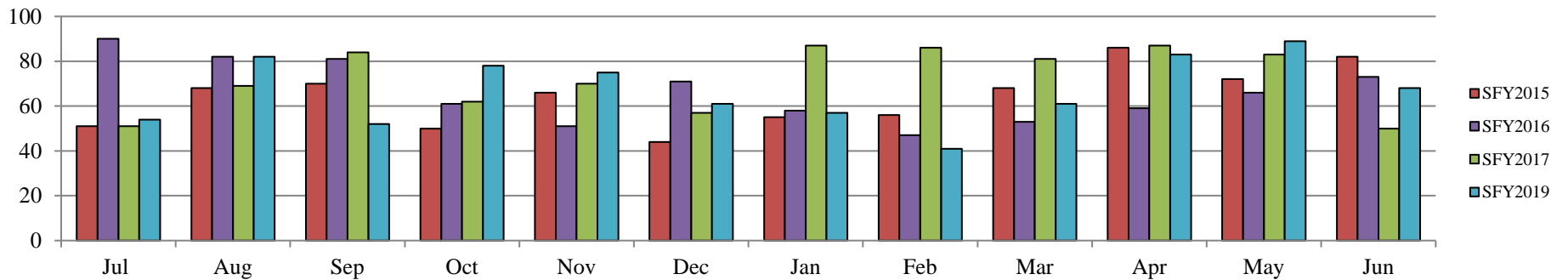
Kansas City Region Fiscal Year Average Removals and Exits SFY2012-SFY2019



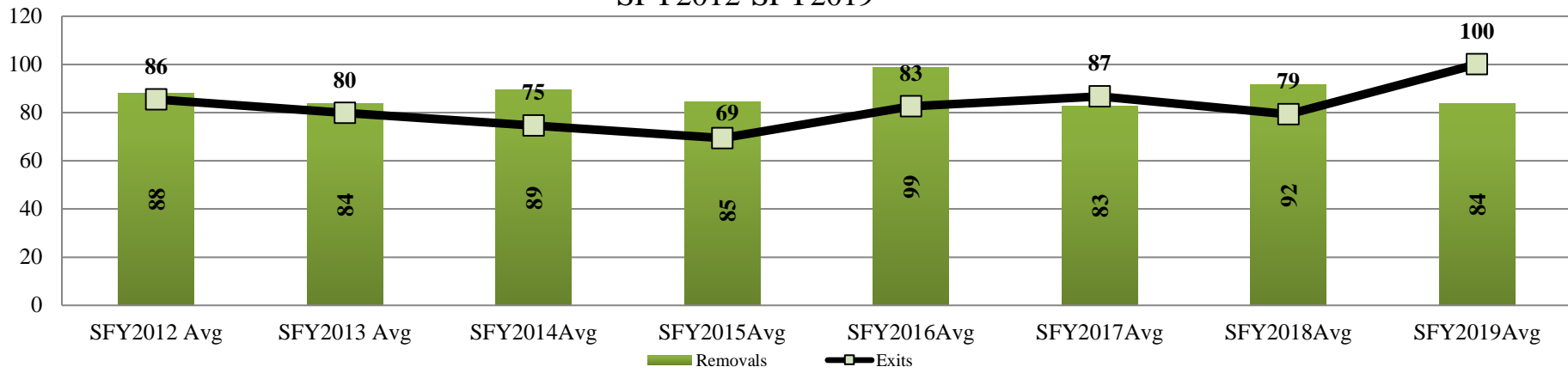
Kansas City Region Monthly Exits SFY2015-SFY2019



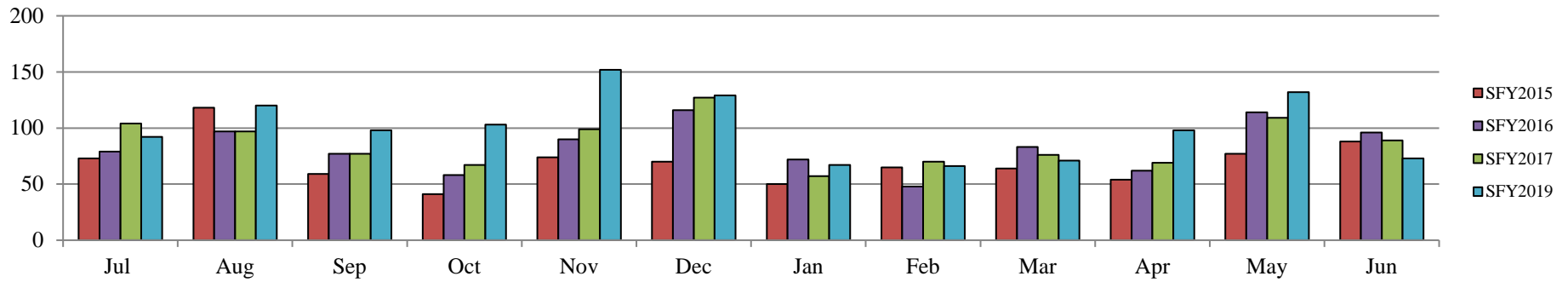
Kansas City Region Monthly Removals SFY2015-SFY2019



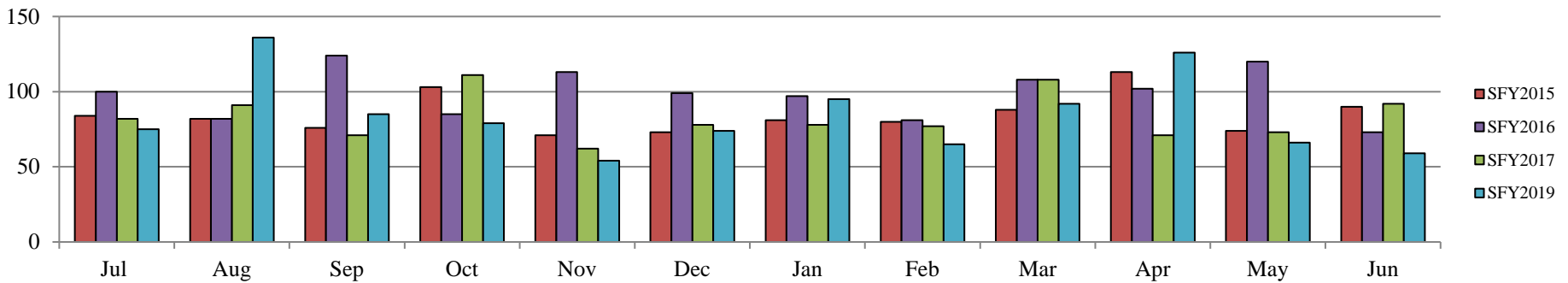
East Region Fiscal Year Average Removals and Exits SFY2012-SFY2019



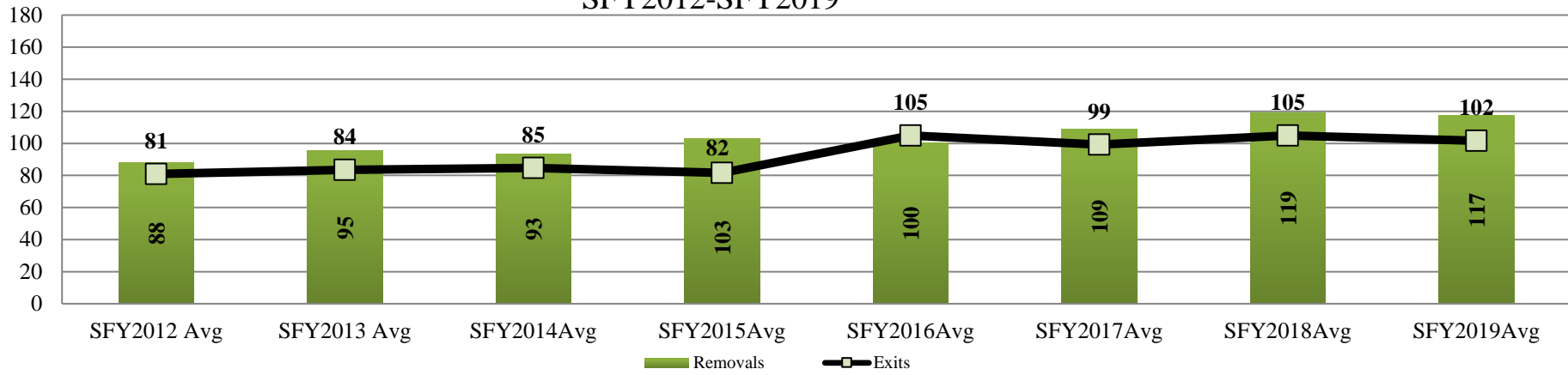
East Region Monthly Exits SFY2015-SFY2019



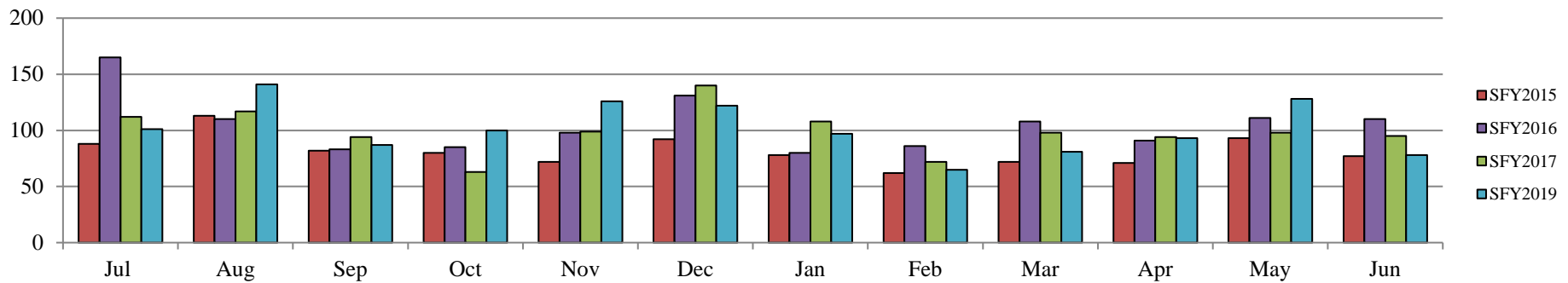
East Region Monthly Removals SFY2015-SFY2019



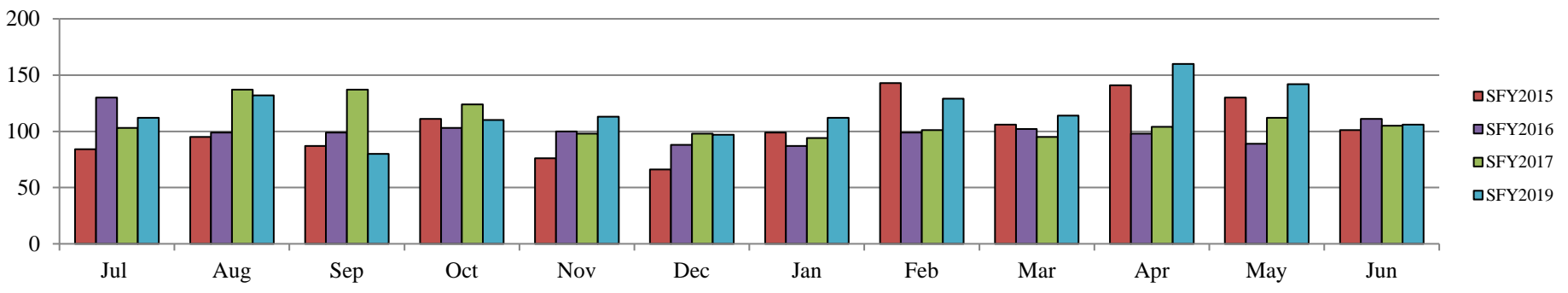
West Region Fiscal Year Average Removals and Exits
SFY2012-SFY2019



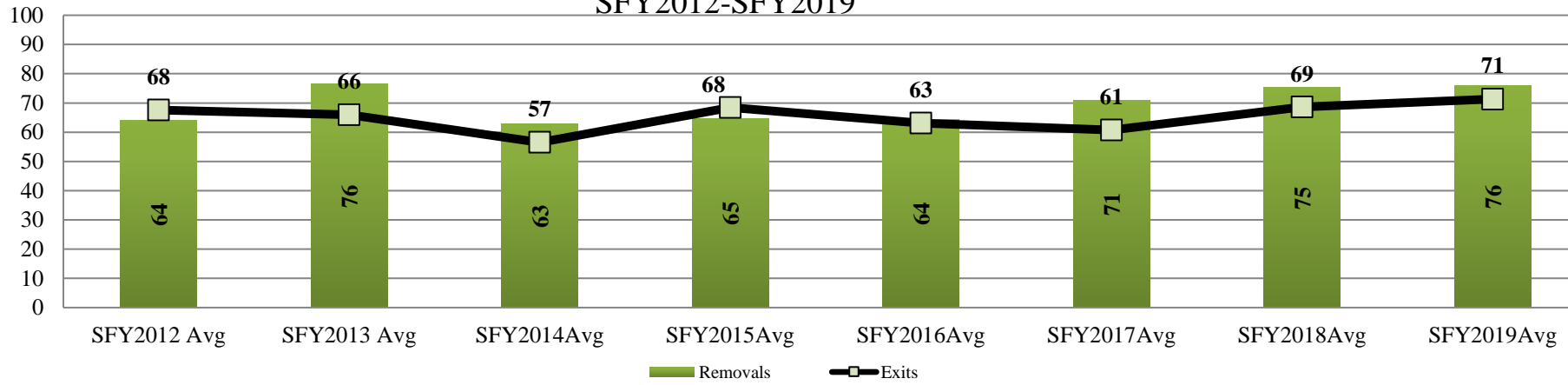
West Region Monthly Exits
SFY2015-SFY2019



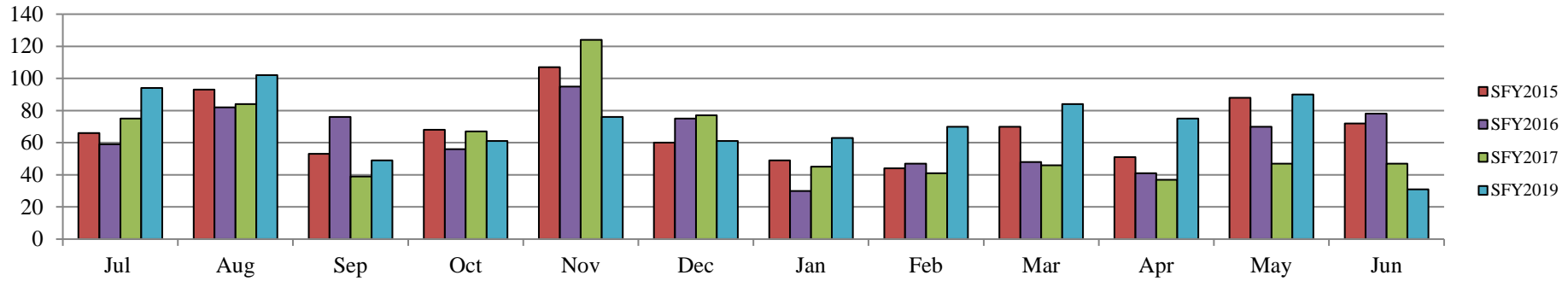
West Region Monthly Removals
SFY2015-SFY2019



Wichita Region Fiscal Year Average Removals and Exits SFY2012-SFY2019



Wichita Region Monthly Exits SFY2015-SFY2019



Wichita Region Monthly Removals SFY2015-SFY2019

