



## FY 2017 Removals, Exits and Out of Home Summary (FACTS)

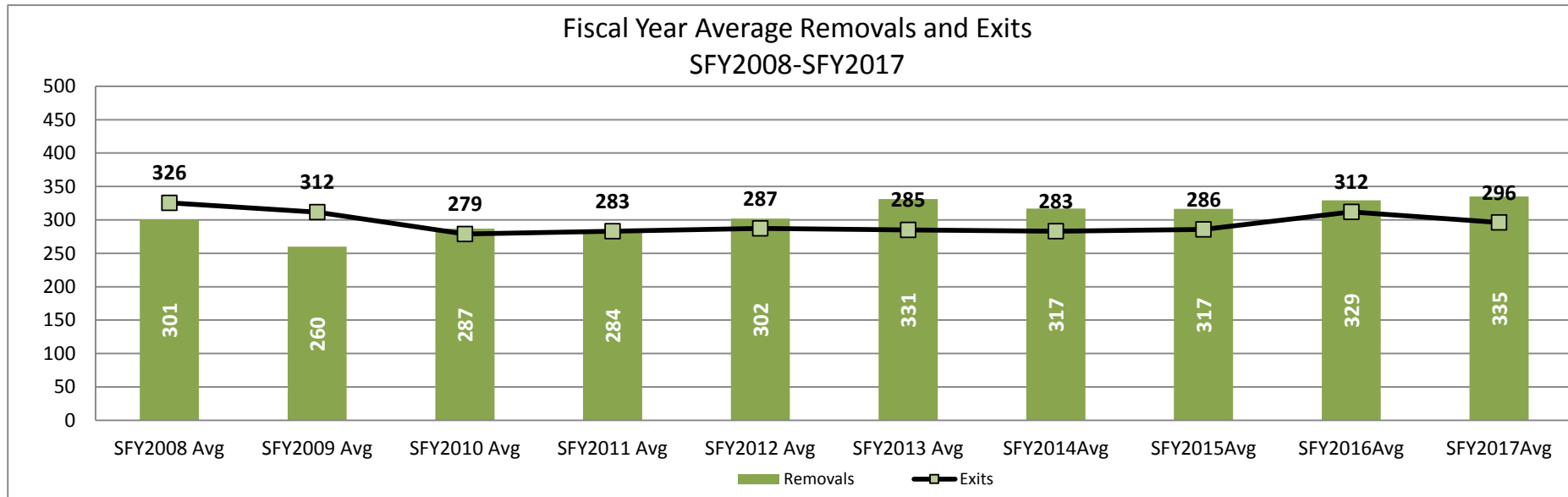
This report contains information on the number children removed into foster care in a given month, the number of children who exited foster care placement outside of their home in a given month, and the number of children who are in a foster care placement outside of their home (OOH) on the last day of each month. Information is provided by DCF Region and County.

Strong Families Make a Strong Kansas

Updated: 07/21/2017

By DCF Region	Type of Information	Jul	Aug	Sep	Oct	Nov	Dec	Jan	Feb	Mar	Apr	May	Jun	Fiscal year Total	Fiscal year Average
Kansas City Region	Removals	51	69	84	62	70	57	87	86	81	87	83	50	867	72
Kansas City Region	Exits	69	74	35	40	50	73	36	37	40	53	40	46	593	49
Kansas City Region	OOH Last Day of the Month	1422	1425	1474	1498	1524	1501	1547	1598	1628	1663	1714	1706		1,558
East Region	Removals	82	91	71	111	62	78	78	77	108	71	73	92	994	83
East Region	Exits	104	97	77	67	99	127	57	70	76	69	109	89	1,041	87
East Region	OOH Last Day of the Month	2063	2043	2027	2083	2044	2002	2032	2040	2078	2079	2047	2041		2,048
West Region	Removals	103	137	137	124	98	98	94	101	95	104	112	105	1,308	109
West Region	Exits	112	117	94	63	99	140	108	72	98	94	98	95	1,190	99
West Region	OOH Last Day of the Month	1730	1762	1812	1875	1888	1834	1823	1858	1848	1857	1868	1879		1,836
Wichita Region	Removals	41	82	70	91	70	72	73	59	90	58	80	65	851	71
Wichita Region	Exits	75	84	39	67	124	77	45	41	46	37	47	47	729	61
Wichita Region	OOH Last Day of the Month	1390	1398	1422	1455	1390	1384	1427	1440	1494	1517	1559	1566		1,454
State	Removals	277	379	362	388	300	305	332	323	374	320	348	312	4,020	335
State	Exits	360	372	245	237	372	417	246	220	260	253	294	277	3,553	296
State	OOH Last Day of the Month	6605	6628	6735	6911	6846	6721	6829	6936	7048	7116	7188	7192		6,896

\*Beginning in SFY2015 Discharges were replaced by Exits from Out of Home Placements.



**Data Sources:**

Removals- from FACTS

Exits- from FACTS

OOH Last Day of the Month- from FACTS

**Information By County grouped in DCF Regions**

County	Type of Information	Jul	Aug	Sep	Oct	Nov	Dec	Jan	Feb	Mar	Apr	May	Jun	Fiscal year Total	Fiscal year Average
AL ALLEN	Removals	4	8	9	4	0	3	10	8	6	7	4	4	67	6
AL ALLEN	Exits	1	1	6	10	2	6	2	7	4	4	1	8	52	4
AL ALLEN	OOH Last Day of the Month	66	70	71	67	64	64	73	76	84	87	87	85		75
AN ANDERSON	Removals	0	0	0	0	0	0	1	0	0	0	0	0	1	1
AN ANDERSON	Exits	0	0	0	1	3	0	1	1	0	0	5	0	11	2
AN ANDERSON	OOH Last Day of the Month	13	10	10	10	9	11	11	10	10	9	4	4		9
BB BOURBON	Removals	7	6	9	13	6	1	0	2	2	1	6	1	54	5
BB BOURBON	Exits	5	2	1	1	7	11	6	5	3	2	5	4	52	4
BB BOURBON	OOH Last Day of the Month	80	85	90	104	102	96	91	87	85	84	86	82		89
BR BROWN	Removals	0	3	1	3	2	1	2	0	3	3	5	7	30	3
BR BROWN	Exits	6	5	5	3	7	5	5	5	1	1	5	3	51	4
BR BROWN	OOH Last Day of the Month	108	106	104	103	98	96	92	87	89	92	92	96		97
CQ CHAUTAUQUA	Removals	0	0	0	0	0	0	0	0	0	0	0	0	0	0
CQ CHAUTAUQUA	Exits	0	0	0	0	1	0	0	0	0	0	0	0	1	1
CQ CHAUTAUQUA	OOH Last Day of the Month	8	8	8	8	7	7	7	7	7	7	7	7		7
CK CHEROKEE	Removals	0	0	2	4	2	10	9	3	11	3	2	2	48	5
CK CHEROKEE	Exits	3	4	8	4	1	2	1	0	5	1	5	10	44	4
CK CHEROKEE	OOH Last Day of the Month	62	58	50	53	53	59	66	69	76	78	75	66		64
CF COFFEY	Removals	1	0	0	1	0	0	0	0	1	3	0	1	7	1
CF COFFEY	Exits	5	1	1	0	0	1	0	0	0	0	0	1	9	2
CF COFFEY	OOH Last Day of the Month	6	5	4	6	7	6	6	6	12	15	15	11		8
CR CRAWFORD	Removals	10	6	5	10	12	19	9	4	13	10	8	17	123	10
CR CRAWFORD	Exits	9	12	5	6	11	6	3	9	10	10	25	6	112	9
CR CRAWFORD	OOH Last Day of the Month	184	179	182	181	192	204	207	203	200	200	190	202		194
DP DONIPHAN	Removals	5	6	1	2	0	1	0	0	1	0	0	0	16	3
DP DONIPHAN	Exits	0	1	0	0	2	0	2	0	2	4	2	0	13	2
DP DONIPHAN	OOH Last Day of the Month	40	45	46	48	46	47	46	45	44	40	38	38		44
FR FRANKLIN	Removals	7	7	2	5	5	7	6	11	10	3	5	8	76	6
FR FRANKLIN	Exits	6	3	4	2	1	12	2	2	8	2	13	2	57	5
FR FRANKLIN	OOH Last Day of the Month	108	110	109	112	114	108	112	121	122	124	118	120		115
JA JACKSON	Removals	2	4	12	5	1	0	0	6	0	1	2	9	42	5
JA JACKSON	Exits	4	8	0	3	4	8	0	4	3	0	3	5	42	5
JA JACKSON	OOH Last Day of the Month	39	35	50	52	49	41	41	43	40	40	39	43		43
JF JEFFERSON	Removals	4	0	1	1	0	0	0	0	2	0	0	0	8	2
JF JEFFERSON	Exits	4	4	0	6	1	7	1	0	1	2	0	1	27	3
JF JEFFERSON	OOH Last Day of the Month	50	47	50	46	43	36	36	35	35	33	33	32		40
LB LABETTE	Removals	2	2	2	4	1	0	0	4	3	2	1	5	26	3
LB LABETTE	Exits	1	6	2	3	5	2	0	6	1	3	2	5	36	3
LB LABETTE	OOH Last Day of the Month	67	63	66	64	60	60	63	60	58	59	57	56		61
LN LINN	Removals	2	11	3	0	4	4	5	7	4	4	1	0	45	5
LN LINN	Exits	2	0	0	0	0	12	2	0	0	1	4	4	25	4
LN LINN	OOH Last Day of the Month	26	30	36	37	41	33	36	46	49	52	49	43		40
MS MARSHALL	Removals	5	4	0	4	3	3	10	7	3	2	2	0	43	4
MS MARSHALL	Exits	2	1	0	0	4	2	0	2	3	12	2	4	32	4
MS MARSHALL	OOH Last Day of the Month	24	27	27	31	29	30	40	45	47	37	35	31		34

MI MIAMI	Removals	1	3	6	4	1	0	0	4	9	2	2	1	33	3
MI MIAMI	Exits	9	2	5	2	0	2	2	1	3	4	3	2	35	3
MI MIAMI	OOH Last Day of the Month	86	89	86	87	88	86	84	87	94	91	90	89		88
MG MONTGOMERY	Removals	1	6	2	0	0	5	0	2	1	1	6	7	31	3
MG MONTGOMERY	Exits	14	4	6	3	6	10	1	0	1	2	9	5	61	6
MG MONTGOMERY	OOH Last Day of the Month	170	166	154	150	143	142	142	145	145	144	141	143		149
NM NEMAHA	Removals	1	0	0	1	3	0	5	0	0	1	0	0	11	2
NM NEMAHA	Exits	2	2	1	0	0	0	1	4	4	0	1	0	15	2
NM NEMAHA	OOH Last Day of the Month	11	9	7	8	11	11	15	12	8	8	4	4		9
NO NEOSHO	Removals	6	9	3	0	3	1	1	0	2	4	2	3	34	3
NO NEOSHO	Exits	6	2	6	9	1	4	2	4	2	2	2	3	43	4
NO NEOSHO	OOH Last Day of the Month	76	85	79	73	75	71	71	64	66	69	69	71		72
OS OSAGE	Removals	0	1	0	4	0	0	1	0	1	1	0	0	8	2
OS OSAGE	Exits	0	2	1	0	2	1	0	0	2	1	0	0	9	2
OS OSAGE	OOH Last Day of the Month	29	28	26	30	29	28	29	31	29	27	27	28		28
PT POTTAWATOMIE	Removals	6	2	1	5	2	1	1	3	7	6	2	6	42	4
PT POTTAWATOMIE	Exits	6	3	5	0	2	3	5	0	2	7	4	3	40	4
PT POTTAWATOMIE	OOH Last Day of the Month	36	35	32	35	34	30	26	26	36	35	34	35		33
SN SHAWNEE	Removals	13	12	11	29	17	17	18	14	27	15	23	19	215	18
SN SHAWNEE	Exits	15	32	18	13	37	26	21	15	18	10	18	21	244	20
SN SHAWNEE	OOH Last Day of the Month	712	693	682	706	682	669	676	676	687	693	700	694		689
WB WABAUNSEE	Removals	1	0	0	4	0	3	0	0	1	0	0	0	9	2
WB WABAUNSEE	Exits	0	2	0	0	0	0	0	3	3	1	0	1	10	2
WB WABAUNSEE	OOH Last Day of the Month	11	9	9	13	13	19	16	13	11	10	10	9		12
WL WILSON	Removals	3	0	1	5	0	0	0	2	1	2	2	2	18	2
WL WILSON	Exits	2	0	2	1	2	5	0	2	0	0	0	0	14	2
WL WILSON	OOH Last Day of the Month	33	32	30	37	33	27	26	26	27	28	30	32		30
WO WOODSON	Removals	1	1	0	3	0	2	0	0	0	0	0	0	7	2
WO WOODSON	Exits	2	0	1	0	0	2	0	0	0	0	0	1	6	2
WO WOODSON	OOH Last Day of the Month	18	19	19	22	22	21	20	20	17	17	17	20		19
AT ATCHISON	Removals	3	4	0	2	0	2	6	1	2	1	6	1	28	3
AT ATCHISON	Exits	1	0	2	0	0	3	1	5	1	1	0	0	14	2
AT ATCHISON	OOH Last Day of the Month	45	48	46	48	49	48	52	47	49	48	54	55		49
DG DOUGLAS	Removals	6	6	12	6	1	11	5	7	6	7	9	5	81	7
DG DOUGLAS	Exits	3	10	3	2	3	5	1	6	5	5	1	6	50	4
DG DOUGLAS	OOH Last Day of the Month	155	152	166	170	170	169	173	175	174	177	183	181		170
JO JOHNSON	Removals	17	22	26	24	29	18	34	34	33	34	16	12	299	25
JO JOHNSON	Exits	35	32	14	15	18	24	14	10	16	26	22	19	245	20
JO JOHNSON	OOH Last Day of the Month	568	559	570	580	592	582	602	624	638	645	645	630		603
LV LEAVENWORTH	Removals	12	13	16	6	5	4	17	14	9	15	9	9	129	11
LV LEAVENWORTH	Exits	3	2	0	2	2	6	0	4	4	1	4	2	30	3
LV LEAVENWORTH	OOH Last Day of the Month	134	143	157	164	165	162	173	186	190	203	207	209		174
WY WYANDOTTE	Removals	13	24	30	24	35	22	25	30	31	30	43	23	330	28
WY WYANDOTTE	Exits	27	30	16	21	27	35	20	12	14	20	13	19	254	21
WY WYANDOTTE	OOH Last Day of the Month	520	523	535	536	548	540	547	566	577	590	625	631		562
BT BARTON	Removals	7	10	11	3	0	6	11	4	7	4	9	7	79	7
BT BARTON	Exits	12	11	6	3	4	10	3	4	8	3	5	6	75	6
BT BARTON	OOH Last Day of the Month	126	122	128	129	130	123	131	129	129	133	137	135		129

CS CHASE	Removals	0	0	0	0	0	0	0	0	1	0	0	0	1	1
CS CHASE	Exits	0	1	0	0	0	0	0	0	0	0	0	0	1	1
CS CHASE	OOH Last Day of the Month	5	4	4	4	4	4	4	4	5	5	5	5		4
CN CHEYENNE	Removals	2	0	0	1	0	0	0	0	0	0	0	0	3	2
CN CHEYENNE	Exits	1	0	0	0	0	1	0	0	3	0	2	0	7	2
CN CHEYENNE	OOH Last Day of the Month	8	8	9	10	10	9	9	9	6	6	5	4		8
CA CLARK	Removals	0	0	0	0	0	0	3	0	0	0	0	0	3	3
CA CLARK	Exits	0	0	0	0	0	0	0	0	0	0	0	0	0	0
CA CLARK	OOH Last Day of the Month	0	0	0	0	0	0	3	3	3	3	3	3		3
CY CLAY	Removals	5	1	0	3	0	1	0	3	0	7	0	0	20	3
CY CLAY	Exits	0	0	5	0	0	0	0	2	0	0	7	1	15	4
CY CLAY	OOH Last Day of the Month	19	19	14	14	14	16	19	20	20	28	21	19		19
CD CLOUD	Removals	1	5	7	0	6	0	2	0	2	0	8	2	33	4
CD CLOUD	Exits	4	1	3	0	8	2	2	3	2	3	1	2	31	3
CD CLOUD	OOH Last Day of the Month	25	29	37	37	37	33	34	31	27	24	31	31		31
CM COMANCHE	Removals	0	0	0	0	0	0	0	0	0	5	0	0	5	5
CM COMANCHE	Exits	0	0	0	0	0	0	0	0	0	0	0	0	0	0
CM COMANCHE	OOH Last Day of the Month	2	2	2	2	2	2	2	2	2	7	7	7		3
DC DECATUR	Removals	1	0	0	0	0	0	0	0	0	1	0	0	2	1
DC DECATUR	Exits	0	0	0	0	0	0	1	0	0	0	0	0	1	1
DC DECATUR	OOH Last Day of the Month	1	1	1	1	1	1	0	0	0	1	1	1		1
DK DICKINSON	Removals	4	7	6	1	4	4	0	5	2	5	2	1	41	4
DK DICKINSON	Exits	3	4	0	0	6	5	0	5	6	4	2	6	41	5
DK DICKINSON	OOH Last Day of the Month	51	56	61	63	60	58	57	61	57	56	56	50		57
ED EDWARDS	Removals	0	0	1	0	3	0	0	1	0	0	0	0	5	2
ED EDWARDS	Exits	0	2	0	1	0	0	0	0	0	1	0	0	4	1
ED EDWARDS	OOH Last Day of the Month	11	9	10	9	12	12	12	13	13	12	12	12		11
EL ELLIS	Removals	9	4	1	11	4	7	5	0	3	3	1	3	51	5
EL ELLIS	Exits	10	5	2	2	9	4	8	3	7	10	7	9	76	6
EL ELLIS	OOH Last Day of the Month	88	87	84	96	94	97	94	92	89	81	74	66		87
EW ELLSWORTH	Removals	0	0	1	3	1	0	0	0	0	0	0	1	6	2
EW ELLSWORTH	Exits	2	1	1	0	0	4	0	0	0	0	2	1	11	2
EW ELLSWORTH	OOH Last Day of the Month	21	19	19	23	23	19	19	19	18	18	16	16		19
FI FINNEY	Removals	4	18	6	7	5	2	0	3	1	3	11	1	61	6
FI FINNEY	Exits	8	4	6	8	5	5	12	0	4	4	11	8	75	7
FI FINNEY	OOH Last Day of the Month	88	102	101	102	100	95	85	89	82	80	82	75		90
FO FORD	Removals	5	4	12	13	2	5	5	11	9	8	6	14	94	8
FO FORD	Exits	13	12	2	1	14	15	2	3	0	3	6	4	75	7
FO FORD	OOH Last Day of the Month	104	96	106	120	110	96	102	106	117	124	121	130		111
GE GEARY	Removals	5	11	5	8	6	5	12	1	2	14	1	4	74	6
GE GEARY	Exits	5	5	2	8	5	2	7	6	6	13	3	2	64	5
GE GEARY	OOH Last Day of the Month	70	76	69	69	71	76	81	77	73	74	72	77		74
GO GOVE	Removals	0	0	0	0	0	0	0	0	0	0	0	3	3	3
GO GOVE	Exits	0	0	0	0	0	3	0	0	0	0	0	0	3	3
GO GOVE	OOH Last Day of the Month	5	5	5	5	5	2	2	2	2	2	2	5		4
GH GRAHAM	Removals	0	0	0	1	0	1	0	0	1	1	0	1	5	1
GH GRAHAM	Exits	0	0	0	0	2	2	1	0	0	2	0	0	7	2
GH GRAHAM	OOH Last Day of the Month	3	3	5	6	4	3	2	2	3	2	2	3		3

GT GRANT	Removals	0	0	0	3	1	3	4	0	0	0	2	1	14	2
GT GRANT	Exits	0	0	0	0	0	5	1	2	1	0	1	1	11	2
GT GRANT	OOH Last Day of the Month	17	16	17	20	21	19	22	20	19	19	20	20		19
GY GRAY	Removals	0	0	0	0	0	0	0	0	0	0	3	0	3	3
GY GRAY	Exits	0	0	0	0	0	0	0	0	0	0	0	0	0	0
GY GRAY	OOH Last Day of the Month	3	3	3	3	3	3	3	2	3	3	6	6		3
GL GREELEY	Removals	0	0	0	0	0	0	0	0	0	0	0	0	0	0
GL GREELEY	Exits	0	0	0	0	0	0	0	0	0	0	0	0	0	0
GL GREELEY	OOH Last Day of the Month	4	4	4	4	4	4	4	4	4	4	4	4		4
HM HAMILTON	Removals	0	3	0	0	0	0	0	0	0	0	0	0	3	3
HM HAMILTON	Exits	0	0	0	0	0	0	0	3	0	0	0	0	3	3
HM HAMILTON	OOH Last Day of the Month	2	5	5	5	5	5	5	2	2	2	2	2		4
HV HARVEY	Removals	1	8	1	5	3	2	1	5	14	5	1	2	48	4
HV HARVEY	Exits	2	3	5	0	4	1	2	2	3	2	5	1	30	3
HV HARVEY	OOH Last Day of the Month	69	74	70	75	73	74	73	80	91	92	88	89		79
HS HASKELL	Removals	0	0	0	0	0	1	0	0	0	0	0	0	1	1
HS HASKELL	Exits	0	2	0	0	0	0	0	0	0	0	1	0	3	2
HS HASKELL	OOH Last Day of the Month	4	2	2	2	2	3	3	3	3	3	2	2		3
HG HODGEMAN	Removals	0	0	0	0	0	0	0	0	2	0	0	0	2	2
HG HODGEMAN	Exits	0	0	0	0	0	0	0	0	0	0	0	0	0	0
HG HODGEMAN	OOH Last Day of the Month	2	2	2	2	2	2	2	2	3	3	3	4		2
JW JEWELL	Removals	0	0	0	0	0	0	2	0	2	0	0	0	4	2
JW JEWELL	Exits	0	4	0	0	0	1	0	0	0	0	0	0	5	3
JW JEWELL	OOH Last Day of the Month	6	5	5	6	6	5	7	7	9	9	9	9		7
KE KEARNY	Removals	0	0	0	0	0	0	0	1	0	0	0	0	1	1
KE KEARNY	Exits	1	0	0	0	0	1	2	1	0	0	0	1	6	1
KE KEARNY	OOH Last Day of the Month	5	5	5	5	5	2	2	2	2	2	2	1		3
KW KIOWA	Removals	0	0	0	1	0	0	0	0	0	0	0	0	1	1
KW KIOWA	Exits	0	0	0	0	0	0	0	0	0	0	0	0	0	0
KW KIOWA	OOH Last Day of the Month	4	4	4	5	5	5	5	5	5	5	5	5		5
LE LANE	Removals	0	0	0	0	0	0	1	0	0	0	1	0	2	1
LE LANE	Exits	0	0	0	0	0	0	0	0	0	0	0	0	0	0
LE LANE	OOH Last Day of the Month	1	1	1	1	1	3	2	2	2	2	3	3		2
LC LINCOLN	Removals	0	0	0	0	0	0	0	0	0	0	0	0	0	0
LC LINCOLN	Exits	0	0	0	0	0	0	1	0	0	1	0	0	2	1
LC LINCOLN	OOH Last Day of the Month	3	5	5	5	5	5	3	3	3	2	2	1		4
LG LOGAN	Removals	0	0	1	0	0	0	0	1	0	0	0	0	2	1
LG LOGAN	Exits	0	0	1	0	0	0	0	0	0	0	0	1	2	1
LG LOGAN	OOH Last Day of the Month	2	2	2	2	2	2	2	3	3	3	3	2		2
LY LYON	Removals	4	10	18	5	2	15	13	12	1	10	7	3	100	8
LY LYON	Exits	4	3	8	1	2	5	9	2	10	2	1	5	52	4
LY LYON	OOH Last Day of the Month	109	116	126	130	130	139	140	149	137	144	149	152		135
MN MARION	Removals	2	5	0	0	5	3	1	1	4	3	3	2	29	3
MN MARION	Exits	5	4	4	3	0	1	1	1	0	1	2	1	23	2
MN MARION	OOH Last Day of the Month	22	26	24	21	26	28	28	28	32	34	35	36		28
MP MCPHERSON	Removals	1	3	2	1	1	0	0	6	0	0	4	0	18	3
MP MCPHERSON	Exits	2	4	3	0	1	2	1	1	0	7	0	0	21	3
MP MCPHERSON	OOH Last Day of the Month	29	28	27	29	31	29	28	33	32	31	33	33		30

ME MEADE	Removals	0	1	7	0	0	0	0	0	0	0	0	0	8	4
ME MEADE	Exits	0	0	0	2	2	2	0	0	1	0	0	0	7	2
ME MEADE	OOH Last Day of the Month	1	2	9	7	5	3	3	3	2	2	2	2		3
MC MITCHELL	Removals	0	0	0	0	1	1	1	0	1	1	0	2	7	1
MC MITCHELL	Exits	2	4	1	0	3	0	0	0	0	0	0	1	11	2
MC MITCHELL	OOH Last Day of the Month	17	10	9	8	8	7	7	8	9	10	10	11		10
MR MORRIS	Removals	0	0	4	0	0	7	1	3	2	0	1	1	19	3
MR MORRIS	Exits	1	0	0	0	0	0	1	0	1	0	0	4	7	2
MR MORRIS	OOH Last Day of the Month	5	5	9	9	9	16	17	19	21	21	22	18		14
MT MORTON	Removals	0	2	1	0	0	0	0	0	0	1	1	0	5	1
MT MORTON	Exits	0	0	1	0	0	0	1	0	0	0	0	0	2	1
MT MORTON	OOH Last Day of the Month	5	7	7	7	7	7	6	6	6	8	6	6		7
NS NESS	Removals	0	0	0	0	0	0	0	0	0	0	0	0	0	0
NS NESS	Exits	0	0	0	0	0	0	0	0	0	0	0	0	0	0
NS NESS	OOH Last Day of the Month	2	2	2	2	2	2	2	2	2	2	2	2		2
NT NORTON	Removals	1	2	2	0	0	2	0	0	0	0	0	0	7	2
NT NORTON	Exits	0	0	0	0	1	0	0	0	0	1	0	0	2	1
NT NORTON	OOH Last Day of the Month	13	15	17	17	16	18	18	18	18	17	17	17		17
OB OSBORNE	Removals	1	0	1	0	0	0	0	0	0	0	0	1	3	1
OB OSBORNE	Exits	0	0	0	0	0	3	0	0	1	0	3	0	7	2
OB OSBORNE	OOH Last Day of the Month	5	8	9	9	9	6	6	6	5	5	2	3		6
OT OTTAWA	Removals	0	0	0	0	0	0	0	0	0	0	0	3	3	3
OT OTTAWA	Exits	2	0	0	0	0	0	2	0	1	4	0	0	9	2
OT OTTAWA	OOH Last Day of the Month	10	11	11	11	11	11	9	9	8	4	4	7		9
PN PAWNEE	Removals	0	0	2	1	3	2	1	1	2	2	1	1	16	2
PN PAWNEE	Exits	2	0	1	0	2	6	2	0	1	0	3	1	18	2
PN PAWNEE	OOH Last Day of the Month	25	25	28	27	30	26	25	26	28	29	27	27		27
PL PHILLIPS	Removals	0	3	0	0	0	0	0	3	1	1	1	5	14	2
PL PHILLIPS	Exits	1	2	0	0	0	0	0	0	1	0	0	4	8	2
PL PHILLIPS	OOH Last Day of the Month	16	17	17	17	17	17	17	20	20	21	22	22		19
RA RAWLINS	Removals	0	2	0	0	0	0	0	0	0	0	0	1	3	2
RA RAWLINS	Exits	0	0	0	0	0	0	0	0	2	0	0	0	2	2
RA RAWLINS	OOH Last Day of the Month	2	4	3	3	3	3	3	3	1	1	1	2		2
RN RENO	Removals	12	9	8	14	22	8	4	20	9	11	15	12	144	12
RN RENO	Exits	16	20	9	9	10	16	12	7	23	6	10	11	149	12
RN RENO	OOH Last Day of the Month	249	240	244	247	262	251	243	256	240	245	248	253		248
RP REPUBLIC	Removals	0	2	5	0	0	0	0	0	0	0	0	2	9	3
RP REPUBLIC	Exits	0	4	0	0	2	1	0	1	0	2	2	0	12	2
RP REPUBLIC	OOH Last Day of the Month	15	13	14	14	12	11	11	10	14	12	10	12		12
RC RICE	Removals	1	0	0	6	0	2	0	0	3	1	2	2	17	2
RC RICE	Exits	0	3	0	0	2	1	1	1	0	3	1	2	14	2
RC RICE	OOH Last Day of the Month	29	24	24	30	28	29	28	28	30	29	29	29		28
RL RILEY	Removals	7	2	3	5	6	3	3	2	2	1	3	1	38	3
RL RILEY	Exits	1	0	10	4	0	2	5	1	0	3	3	1	30	3
RL RILEY	OOH Last Day of the Month	46	48	50	50	56	57	55	56	58	57	58	57		54
RO ROOKS	Removals	1	1	3	0	0	1	0	0	1	0	0	2	9	2
RO ROOKS	Exits	0	0	1	0	0	0	3	0	1	0	0	1	6	2
RO ROOKS	OOH Last Day of the Month	12	13	15	15	15	16	13	13	13	13	13	15		14



BA BARBER	Removals	0	1	0	4	0	1	2	1	0	0	1	1	11	2
BA BARBER	Exits	0	0	0	1	0	2	0	1	1	0	0	0	5	1
BA BARBER	OOH Last Day of the Month	8	9	9	12	12	11	13	13	12	12	13	14		12
BU BUTLER	Removals	5	20	8	13	10	8	9	4	5	2	6	8	98	8
BU BUTLER	Exits	9	24	9	11	21	8	7	10	2	8	6	5	120	10
BU BUTLER	OOH Last Day of the Month	189	186	180	183	169	169	174	166	171	165	166	166		174
CL COWLEY	Removals	2	8	6	4	2	5	9	5	15	12	9	5	82	7
CL COWLEY	Exits	1	6	0	4	2	5	5	0	1	3	2	4	33	3
CL COWLEY	OOH Last Day of the Month	97	99	103	103	105	104	107	111	124	133	143	142		114
EK ELK	Removals	0	2	0	0	0	0	1	0	1	0	1	0	5	1
EK ELK	Exits	0	0	0	0	0	0	1	0	1	0	0	0	2	1
EK ELK	OOH Last Day of the Month	6	8	8	8	8	8	9	8	8	8	9	9		8
GW GREENWOOD	Removals	1	5	4	0	0	1	3	0	7	1	8	3	33	4
GW GREENWOOD	Exits	1	1	0	3	3	2	0	2	0	7	3	5	27	3
GW GREENWOOD	OOH Last Day of the Month	31	36	39	35	31	29	32	30	39	33	38	36		34
HP HARPER	Removals	1	1	0	1	0	1	0	0	0	1	0	7	12	2
HP HARPER	Exits	1	0	0	0	2	0	2	1	0	0	1	0	7	1
HP HARPER	OOH Last Day of the Month	13	14	12	15	13	14	13	12	11	12	11	18		13
KM KINGMAN	Removals	2	0	0	1	1	0	0	0	0	4	0	0	8	2
KM KINGMAN	Exits	0	1	0	0	3	2	0	0	1	0	1	0	8	2
KM KINGMAN	OOH Last Day of the Month	20	19	19	20	17	17	16	16	16	16	19	18		18
PR PRATT	Removals	0	0	3	0	0	0	1	0	1	0	2	0	7	2
PR PRATT	Exits	2	1	0	1	1	3	0	0	5	0	3	0	16	2
PR PRATT	OOH Last Day of the Month	25	23	26	29	26	23	24	24	20	20	21	19		23
SG SEDGWICK	Removals	30	36	49	60	56	47	45	47	57	36	53	41	557	46
SG SEDGWICK	Exits	59	45	30	41	89	46	29	21	33	18	26	32	469	39
SG SEDGWICK	OOH Last Day of the Month	900	897	920	942	902	902	932	956	987	1010	1036	1043		952
SU SUMNER	Removals	0	9	0	8	1	9	3	2	4	2	0	0	38	5
SU SUMNER	Exits	2	6	0	6	3	9	1	6	2	1	5	1	42	4
SU SUMNER	Exits	101	107	106	108	107	107	107	104	106	108	103	101		105

**Data Sources:**

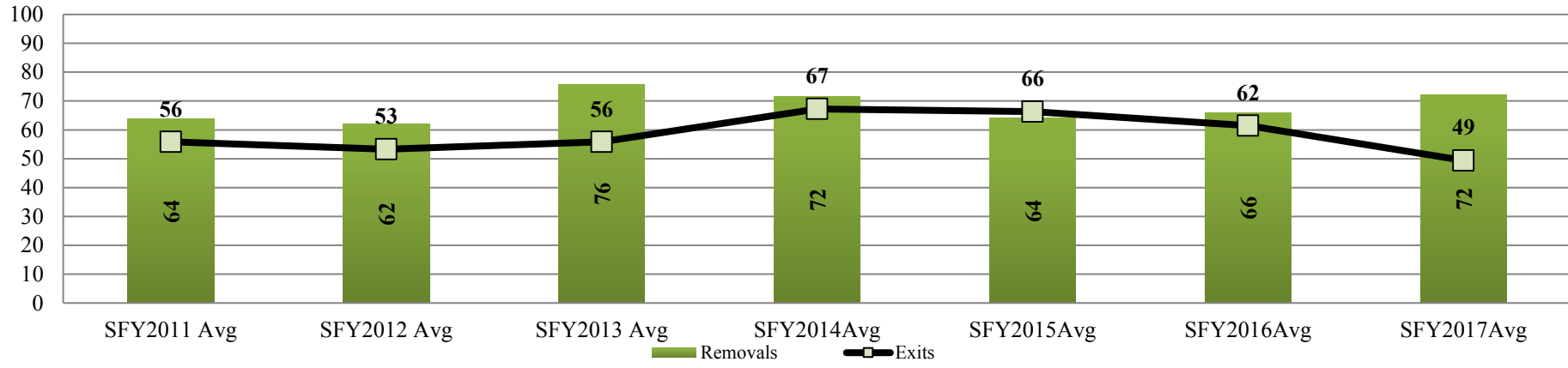
**Removals-** from FACTS

**Exits-** from FACTS

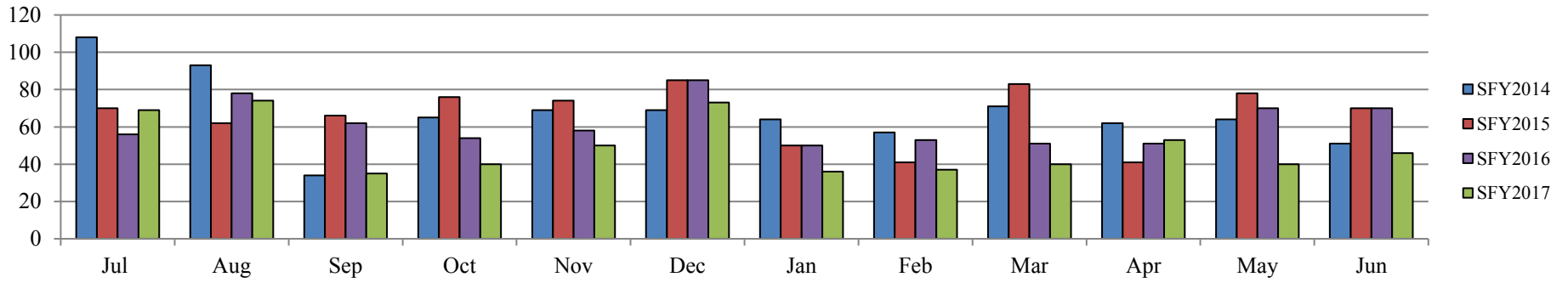
**OOH Last Day of the Month-** from FACTS



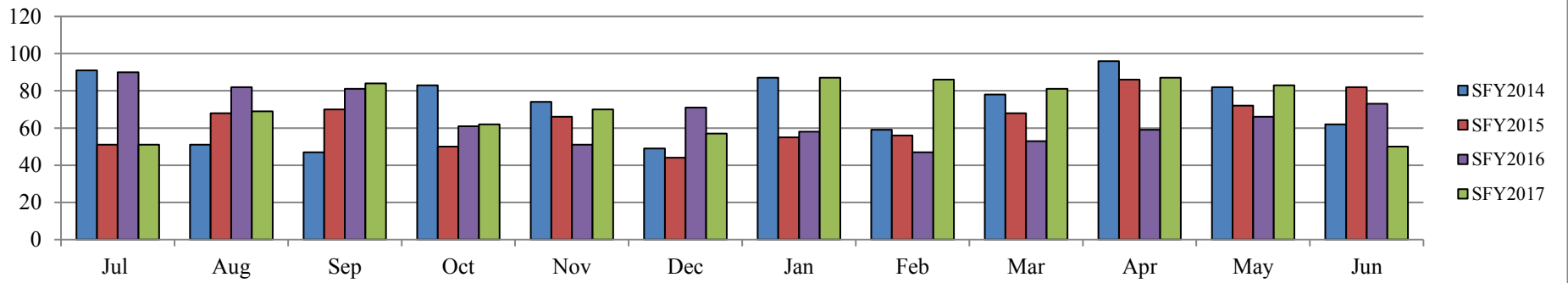
### Kansas City Region Fiscal Year Average Removals and Exits SFY2011-SFY2017



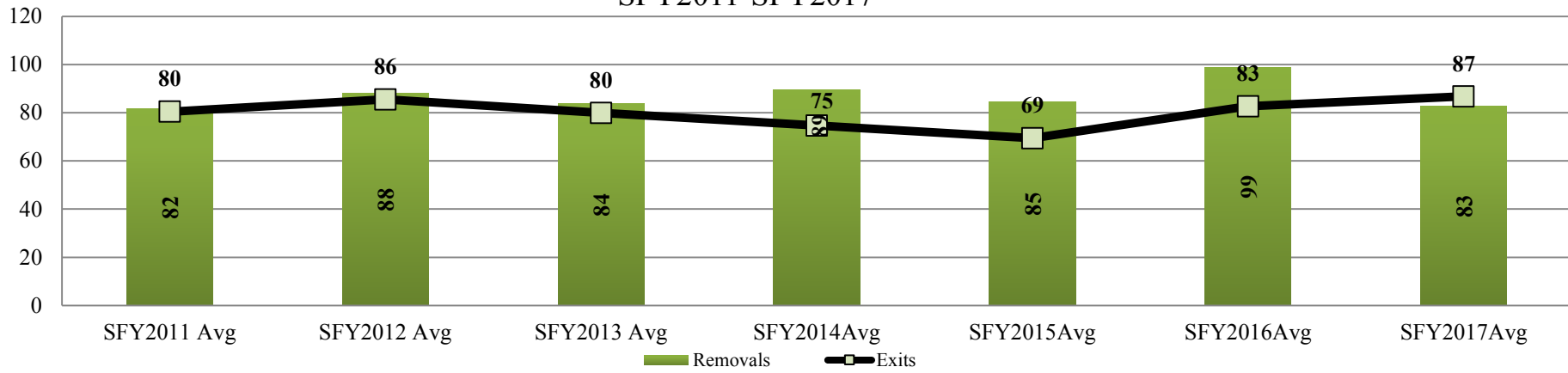
### Kansas City Region Monthly Exits SFY2014-SFY2017



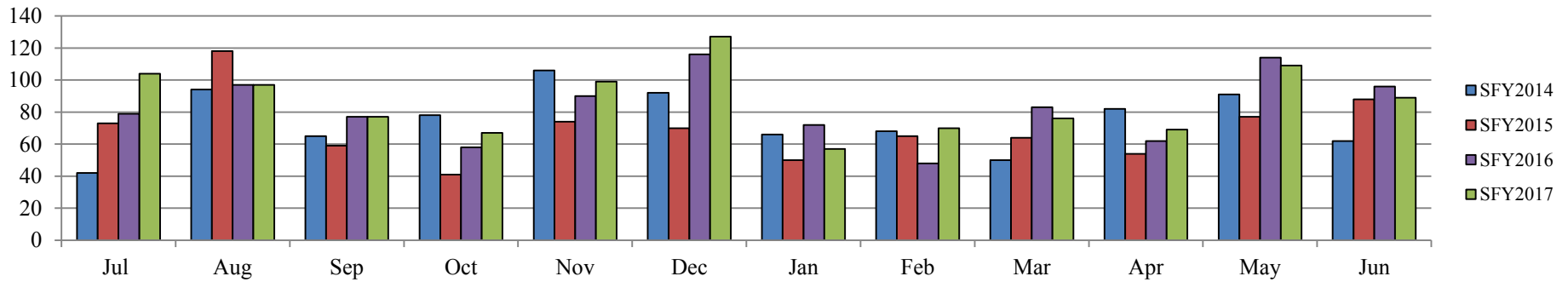
### Kansas City Region Monthly Removals SFY2014-SFY2017



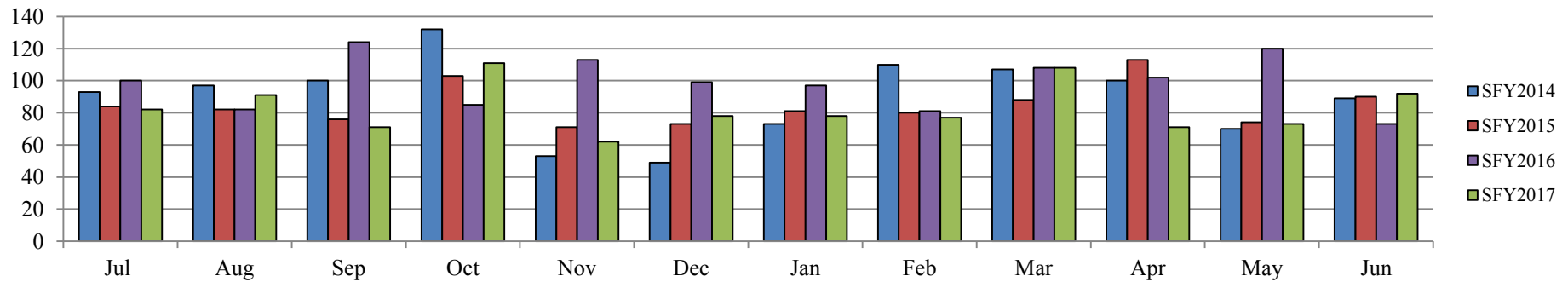
### East Region Fiscal Year Average Removals and Exits SFY2011-SFY2017



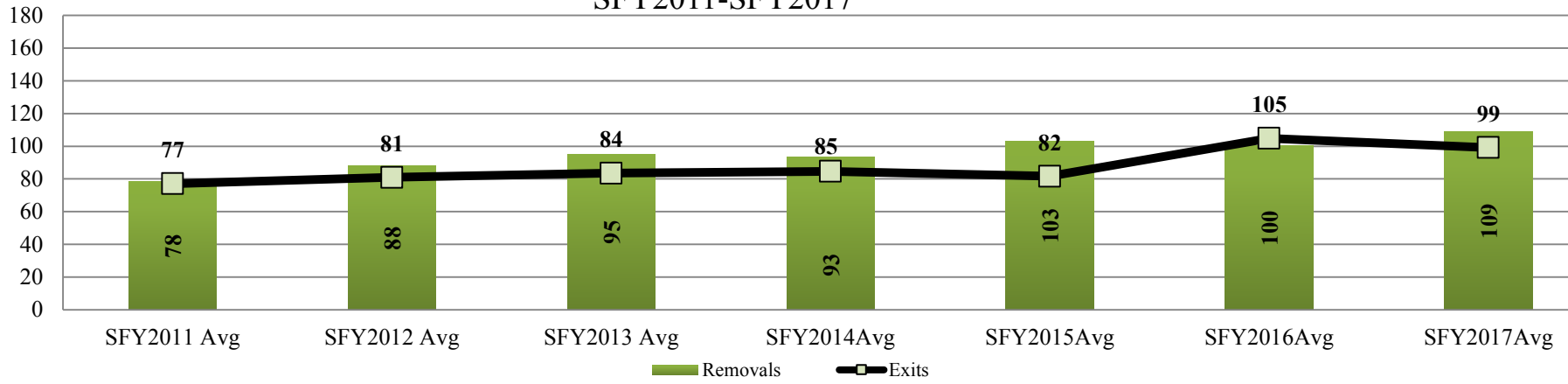
### East Region Monthly Exits SFY2014-SFY2017



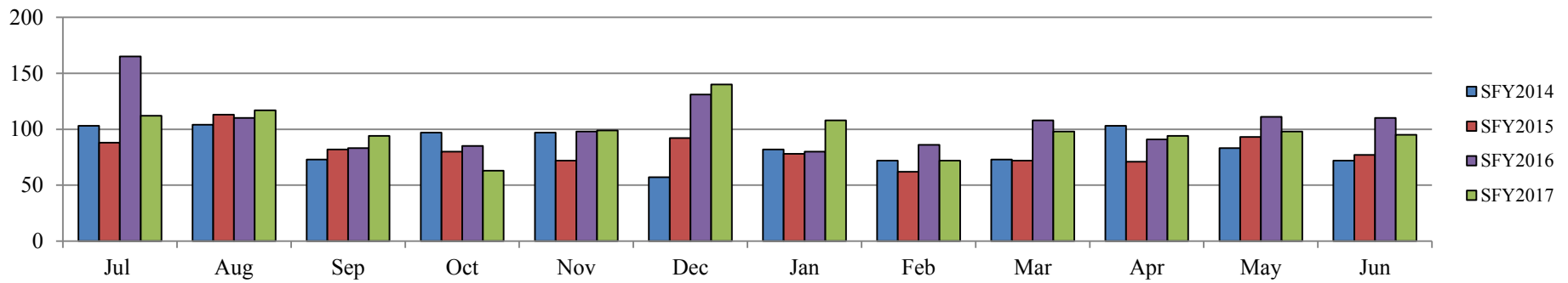
### East Region Monthly Removals SFY2014-SFY2017



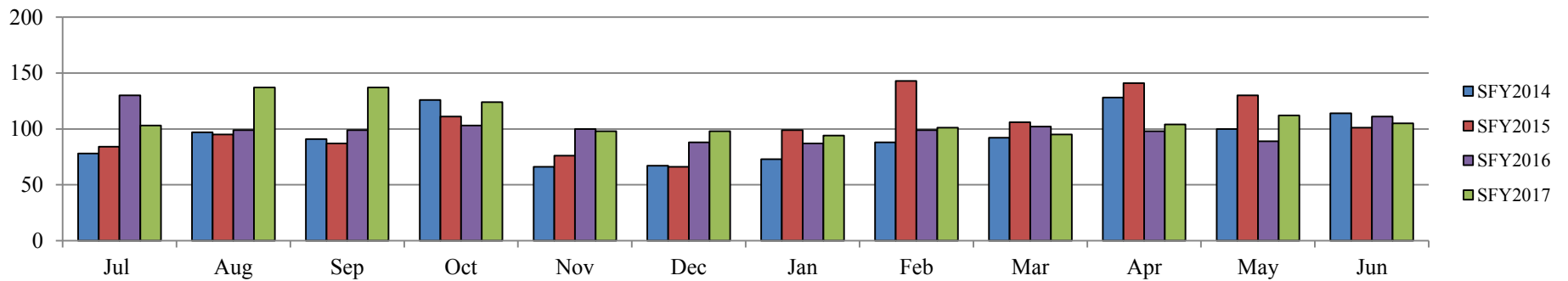
### West Region Fiscal Year Average Removals and Exits SFY2011-SFY2017



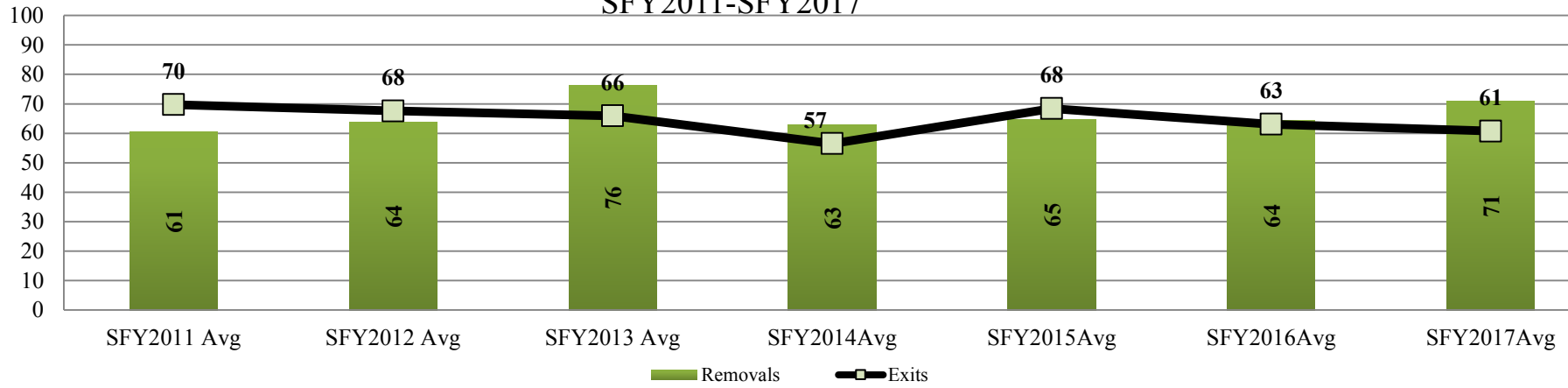
### West Region Monthly Exits SFY2014-SFY2017



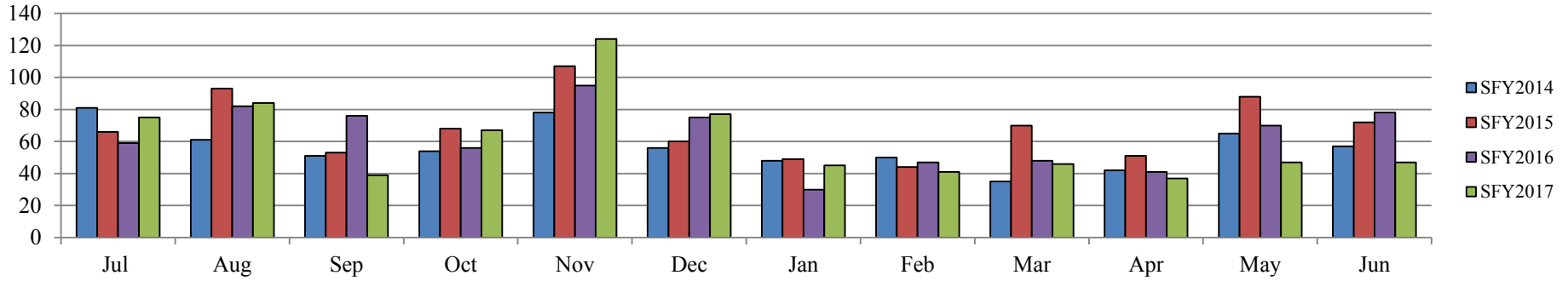
### West Region Monthly Removals SFY2014-SFY2017



Wichita Region Fiscal Year Average Removals and Exits  
SFY2011-SFY2017



Wichita Region Monthly Exits  
SFY2014-SFY2017



Wichita Region Monthly Removals  
SFY2014-SFY2017

