



FY 2015 Removals, Exits and Out of Home Summary (FACTS)

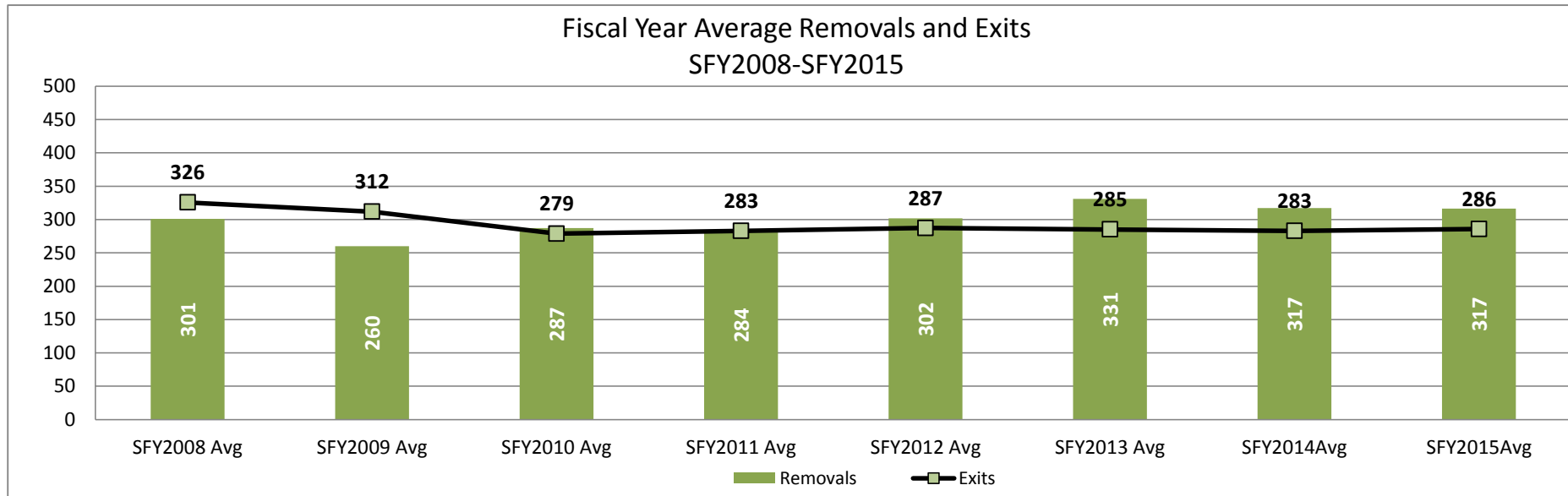
This report contains information on the number children removed into foster care in a given month, the number of children who exited foster care placement outside of their home in a given month, and the number of children who are in a foster care placement outside of their home (OOH) on the last day of each month. Information is provided by DCF Region and County.

Strong Families Make a Strong Kansas

Updated: 7/16/2015

By DCF Region	Type of Information	Jul	Aug	Sep	Oct	Nov	Dec	Jan	Feb	Mar	Apr	May	Jun	Fiscal year Total	Fiscal year Average
Kansas City Region	Removals	51	68	70	50	66	44	55	56	68	86	72	82	768	64
Kansas City Region	Exits	70	62	66	76	74	85	50	41	83	41	78	70	796	66
Kansas City Region	OOH Last Day of the Month	1376	1375	1387	1371	1365	1328	1335	1344	1333	1380	1361	1382		1,361
East Region	Removals	84	82	76	103	71	73	81	80	88	113	74	90	1,015	85
East Region	Exits	73	118	59	41	74	70	50	65	64	54	77	88	833	69
East Region	OOH Last Day of the Month	1740	1693	1720	1788	1797	1784	1816	1835	1862	1917	1914	1930		1,816
West Region	Removals	84	95	87	111	76	66	99	143	106	141	130	101	1,239	103
West Region	Exits	88	113	82	80	72	92	78	62	72	71	93	77	980	82
West Region	OOH Last Day of the Month	1570	1545	1543	1588	1586	1563	1593	1660	1712	1778	1810	1800		1,646
Wichita Region	Removals	84	67	91	76	48	62	52	56	54	58	70	59	777	65
Wichita Region	Exits	66	93	53	68	107	60	49	44	70	51	88	72	821	68
Wichita Region	OOH Last Day of the Month	1471	1438	1462	1468	1416	1417	1418	1436	1430	1432	1407	1405		1,433
State	Removals	303	312	324	340	261	245	287	335	316	398	346	332	3,799	317
State	Exits	297	386	260	265	327	307	227	212	289	217	336	307	3,430	286
State	OOH Last Day of the Month	6157	6051	6112	6215	6164	6092	6162	6275	6337	6507	6492	6517		6,257

*Beginning in SFY2015 Discharges were replaced by Exits from Out of Home Placements.



Data Sources:

Removals- from FACTS

Exits- from FACTS

OOH Last Day of the Month- from FACTS

Information By County grouped in DCF Regions

County	Type of Information	Jul	Aug	Sep	Oct	Nov	Dec	Jan	Feb	Mar	Apr	May	Jun	Fiscal year Total	Fiscal year Average
AL ALLEN	Removals	1	2	9	1	2	3	4	11	1	3	7	0	44	4
AL ALLEN	Exits	5	6	3	0	4	8	2	9	0	3	1	0	41	5
AL ALLEN	OOH Last Day of the Month	77	73	79	78	76	71	72	76	77	77	83	83		77
AN ANDERSON	Removals	1	0	2	4	0	2	0	0	0	0	0	4	13	3
AN ANDERSON	Exits	0	1	0	0	0	3	2	1	1	0	0	1	9	2
AN ANDERSON	OOH Last Day of the Month	13	11	13	16	16	15	13	13	12	11	11	14		13
BB BOURBON	Removals	5	3	10	12	3	2	2	4	4	1	1	6	53	4
BB BOURBON	Exits	2	4	9	2	7	11	1	4	7	0	16	4	67	6
BB BOURBON	OOH Last Day of the Month	99	101	102	116	115	102	102	103	102	102	86	88		102
BR BROWN	Removals	1	8	5	0	2	1	3	1	4	7	5	1	38	3
BR BROWN	Exits	2	7	1	2	2	1	0	2	7	1	4	3	32	3
BR BROWN	OOH Last Day of the Month	70	72	76	74	74	74	77	79	76	82	83	81		77
CQ CHAUTAUQUA	Removals	0	0	0	0	0	0	0	3	1	0	0	0	4	2
CQ CHAUTAUQUA	Exits	0	0	0	0	0	0	0	0	0	1	0	0	1	1
CQ CHAUTAUQUA	OOH Last Day of the Month	6	6	6	6	6	6	6	9	10	9	9	9		7
CK CHEROKEE	Removals	7	3	4	3	0	3	5	1	4	13	3	0	46	5
CK CHEROKEE	Exits	10	4	4	2	3	5	5	3	0	0	3	1	40	4
CK CHEROKEE	OOH Last Day of the Month	78	71	71	71	69	67	67	68	70	85	84	83		74
CF COFFEY	Removals	0	1	0	0	0	0	0	0	0	0	1	2	4	1
CF COFFEY	Exits	0	0	0	0	1	0	0	1	1	0	0	1	4	1
CF COFFEY	OOH Last Day of the Month	8	8	8	8	7	7	7	7	6	6	7	8		7
CR CRAWFORD	Removals	8	3	5	14	10	10	16	1	6	9	6	7	95	8
CR CRAWFORD	Exits	9	17	12	6	7	7	5	3	2	9	13	11	101	8
CR CRAWFORD	OOH Last Day of the Month	174	161	152	162	168	169	183	176	180	180	177	173		171
DP DONIPHAN	Removals	0	0	0	0	2	3	0	0	5	3	1	0	14	3
DP DONIPHAN	Exits	1	2	0	0	1	0	0	0	1	1	0	3	9	2
DP DONIPHAN	OOH Last Day of the Month	18	16	16	16	17	20	20	20	24	26	27	24		20
FR FRANKLIN	Removals	1	5	2	10	5	3	1	1	13	10	5	4	60	5
FR FRANKLIN	Exits	2	2	4	2	4	1	4	3	9	7	1	1	40	3
FR FRANKLIN	OOH Last Day of the Month	63	62	61	69	70	73	70	70	74	77	81	84		71
JA JACKSON	Removals	3	2	3	7	1	2	5	0	9	5	1	3	41	4
JA JACKSON	Exits	1	0	0	0	1	1	6	0	5	0	3	12	29	4
JA JACKSON	OOH Last Day of the Month	34	36	39	49	48	46	46	46	53	57	53	45		46
JF JEFFERSON	Removals	8	0	1	3	0	5	2	1	0	2	0	4	26	3
JF JEFFERSON	Exits	3	6	1	2	1	1	3	6	0	2	3	1	29	3
JF JEFFERSON	OOH Last Day of the Month	53	44	44	47	46	49	49	47	46	48	46	49		47
LB LABETTE	Removals	2	8	5	3	6	3	3	7	6	1	6	3	53	4
LB LABETTE	Exits	9	3	4	6	4	1	0	3	7	3	3	8	51	5
LB LABETTE	OOH Last Day of the Month	44	52	55	54	53	55	58	63	62	59	62	57		56
LN LINN	Removals	3	0	0	0	3	0	3	1	1	4	0	2	17	2
LN LINN	Exits	0	0	0	0	0	4	0	5	0	1	2	1	13	3
LN LINN	OOH Last Day of the Month	15	15	15	15	18	15	18	14	15	17	16	18		16
MS MARSHALL	Removals	0	1	0	4	2	1	2	1	0	0	4	2	17	2
MS MARSHALL	Exits	0	4	2	0	0	1	0	1	1	4	0	4	17	2
MS MARSHALL	OOH Last Day of the Month	26	23	27	31	33	33	36	30	29	25	29	27		29

MI MIAMI	Removals	4	1	2	0	2	2	3	11	4	0	2	4	35	4
MI MIAMI	Exits	1	6	0	1	0	5	2	1	0	5	0	2	23	3
MI MIAMI	OOH Last Day of the Month	58	49	49	48	50	48	48	62	65	60	60	64		55
MG MONTGOMERY	Removals	1	8	0	7	0	6	0	3	12	9	2	6	54	6
MG MONTGOMERY	Exits	2	6	0	3	3	2	0	2	1	0	1	4	24	3
MG MONTGOMERY	OOH Last Day of the Month	139	146	146	149	149	149	149	150	160	169	170	173		154
NM NEMAHA	Removals	2	0	0	0	0	0	0	3	1	0	0	1	7	2
NM NEMAHA	Exits	0	1	2	0	1	1	0	6	2	0	2	0	15	2
NM NEMAHA	OOH Last Day of the Month	23	22	20	22	20	19	19	14	13	13	11	12		17
NO NEOSHO	Removals	5	7	1	6	4	1	5	5	1	9	2	5	51	4
NO NEOSHO	Exits	4	8	1	1	0	3	2	4	0	2	1	7	33	3
NO NEOSHO	OOH Last Day of the Month	62	60	61	67	71	70	73	74	74	82	81	81		71
OS OSAGE	Removals	1	2	1	2	1	0	1	3	0	2	0	1	14	2
OS OSAGE	Exits	0	0	0	0	1	0	1	0	0	1	1	1	5	1
OS OSAGE	OOH Last Day of the Month	14	18	18	18	18	21	20	27	27	30	26	26		22
PT POTTAWATOMIE	Removals	3	2	4	3	5	4	2	1	1	0	3	0	28	3
PT POTTAWATOMIE	Exits	2	6	2	0	5	1	1	3	2	0	4	4	30	3
PT POTTAWATOMIE	OOH Last Day of the Month	31	25	27	30	30	33	34	31	32	33	35	30		31
SN SHAWNEE	Removals	25	26	22	17	21	21	24	22	15	34	24	32	283	24
SN SHAWNEE	Exits	17	32	12	13	29	13	15	8	18	14	19	17	207	17
SN SHAWNEE	OOH Last Day of the Month	584	577	593	595	595	597	605	610	609	622	629	652		606
WB WABAUNSEE	Removals	0	0	0	0	0	1	0	0	0	0	0	1	2	1
WB WABAUNSEE	Exits	0	0	0	0	0	0	0	0	0	0	0	0	0	0
WB WABAUNSEE	OOH Last Day of the Month	8	8	8	8	8	6	6	7	7	7	7	8		7
WL WILSON	Removals	3	0	0	3	1	0	0	0	0	1	1	1	10	2
WL WILSON	Exits	0	2	2	0	0	1	0	0	0	0	0	1	6	2
WL WILSON	OOH Last Day of the Month	26	21	18	21	21	20	20	20	20	21	22	22		21
WO WOODSON	Removals	0	0	0	4	1	0	0	0	0	0	0	1	6	2
WO WOODSON	Exits	3	1	0	1	0	0	1	0	0	0	0	1	7	1
WO WOODSON	OOH Last Day of the Month	17	16	16	18	19	19	18	19	19	19	19	19		18
AT ATCHISON	Removals	3	8	1	1	5	0	4	0	0	2	1	7	32	4
AT ATCHISON	Exits	1	0	0	1	2	7	2	10	1	1	5	3	33	3
AT ATCHISON	OOH Last Day of the Month	31	38	39	39	42	35	37	27	26	27	23	25		32
DG DOUGLAS	Removals	3	9	3	6	4	2	12	5	9	6	4	9	72	6
DG DOUGLAS	Exits	5	2	6	8	7	12	5	1	4	1	7	3	61	5
DG DOUGLAS	OOH Last Day of the Month	116	123	122	120	117	110	119	120	125	131	128	136		122
JO JOHNSON	Removals	20	25	38	28	28	23	26	23	39	35	36	35	356	30
JO JOHNSON	Exits	33	28	30	39	43	34	20	17	47	17	22	26	356	30
JO JOHNSON	OOH Last Day of the Month	609	604	615	614	594	581	583	588	581	601	613	614		600
LV LEAVENWORTH	Removals	11	11	12	5	8	6	2	4	4	7	6	4	80	7
LV LEAVENWORTH	Exits	8	9	7	8	5	12	9	6	6	6	9	9	94	8
LV LEAVENWORTH	OOH Last Day of the Month	117	118	124	122	125	119	112	110	108	108	100	100		114
WY WYANDOTTE	Removals	14	15	16	10	21	13	11	24	16	36	25	27	228	19
WY WYANDOTTE	Exits	23	23	23	20	17	20	14	7	25	16	35	29	252	21
WY WYANDOTTE	OOH Last Day of the Month	503	492	487	476	487	483	484	499	493	513	497	507		493
BT BARTON	Removals	3	6	14	9	7	5	7	14	5	14	5	11	100	8
BT BARTON	Exits	8	11	7	10	8	4	6	8	6	8	13	13	102	9
BT BARTON	OOH Last Day of the Month	170	166	169	172	171	170	171	174	175	179	172	169		172

GT GRANT	Removals	0	0	0	0	0	0	0	6	4	1	1	0	12	3
GT GRANT	Exits	3	0	1	0	0	2	0	0	0	0	0	0	6	2
GT GRANT	OOH Last Day of the Month	8	8	8	7	7	5	5	11	15	15	16	17		10
GY GRAY	Removals	0	0	0	0	0	0	0	0	0	0	0	3	3	3
GY GRAY	Exits	0	4	0	2	0	3	0	2	2	0	0	0	13	3
GY GRAY	OOH Last Day of the Month	18	15	16	12	12	9	9	7	5	5	5	8		10
GL GREELEY	Removals	0	0	0	0	0	0	0	0	0	0	0	0	0	0
GL GREELEY	Exits	0	0	0	0	0	0	2	0	0	0	0	0	2	2
GL GREELEY	OOH Last Day of the Month	4	3	3	3	3	3	1	1	1	1	1	1		2
HM HAMILTON	Removals	0	0	0	0	0	0	0	3	0	0	0	0	3	3
HM HAMILTON	Exits	1	0	1	0	0	0	0	0	0	0	1	0	3	1
HM HAMILTON	OOH Last Day of the Month	1	1	0	0	0	0	0	3	3	3	3	2		2
HV HARVEY	Removals	2	1	2	3	0	2	1	5	8	0	10	0	34	4
HV HARVEY	Exits	2	1	1	4	4	4	3	0	7	2	1	4	33	3
HV HARVEY	OOH Last Day of the Month	56	59	60	59	55	53	51	56	57	55	65	60		57
HS HASKELL	Removals	1	0	0	0	0	1	2	0	0	0	0	0	4	1
HS HASKELL	Exits	0	0	0	0	0	0	0	0	1	0	1	0	2	1
HS HASKELL	OOH Last Day of the Month	6	6	6	6	6	7	9	9	8	8	7	7		7
HG HODGEMAN	Removals	0	0	0	0	0	0	0	0	0	0	0	0	0	0
HG HODGEMAN	Exits	0	0	0	0	0	0	2	0	0	0	0	0	2	2
HG HODGEMAN	OOH Last Day of the Month	0	0	0	0	0	0	0	0	1	1	1	1		1
JW JEWELL	Removals	0	0	0	0	0	0	0	0	0	0	0	0	0	0
JW JEWELL	Exits	0	1	1	0	0	0	1	0	0	0	0	0	3	1
JW JEWELL	OOH Last Day of the Month	4	4	3	3	3	2	2	2	2	2	2	2		3
KE KEARNY	Removals	0	1	1	2	0	0	0	1	2	2	2	0	11	2
KE KEARNY	Exits	2	1	0	0	0	0	0	3	0	2	0	0	8	2
KE KEARNY	OOH Last Day of the Month	2	3	4	6	6	6	6	5	6	6	8	8		6
KW KIOWA	Removals	0	0	0	0	0	0	0	3	0	0	0	0	3	3
KW KIOWA	Exits	0	0	0	0	0	0	0	0	0	0	0	0	0	0
KW KIOWA	OOH Last Day of the Month	0	0	0	0	0	0	0	2	3	3	3	3		3
LE LANE	Removals	0	0	0	3	0	0	0	0	0	1	0	0	4	2
LE LANE	Exits	1	1	0	1	0	0	1	0	0	0	3	0	7	1
LE LANE	OOH Last Day of the Month	4	3	3	5	5	5	4	4	4	5	2	2		4
LC LINCOLN	Removals	0	0	1	0	1	0	1	0	1	0	0	2	6	1
LC LINCOLN	Exits	2	2	0	0	0	2	1	0	0	1	1	1	10	1
LC LINCOLN	OOH Last Day of the Month	7	4	5	5	5	4	4	5	6	6	4	3		5
LG LOGAN	Removals	0	0	0	0	1	0	0	0	0	0	0	0	1	1
LG LOGAN	Exits	1	0	1	0	0	0	0	0	0	0	0	1	3	1
LG LOGAN	OOH Last Day of the Month	4	4	3	3	4	4	4	4	4	3	3	2		4
LY LYON	Removals	1	3	2	4	0	2	2	3	1	6	3	2	29	3
LY LYON	Exits	2	9	1	3	2	6	3	1	1	4	4	9	45	4
LY LYON	OOH Last Day of the Month	117	110	112	113	109	105	104	106	106	107	106	98		108
MN MARION	Removals	0	2	0	2	1	9	1	0	5	1	0	2	23	3
MN MARION	Exits	4	0	3	0	2	1	0	1	3	0	3	0	17	2
MN MARION	OOH Last Day of the Month	14	15	12	15	14	22	23	22	24	25	22	24		19
MP MCPHERSON	Removals	0	2	4	4	2	0	1	4	4	2	1	0	24	3
MP MCPHERSON	Exits	2	2	3	3	3	2	1	0	0	1	1	0	18	2
MP MCPHERSON	OOH Last Day of the Month	20	20	21	18	17	14	14	19	21	22	23	23		19

ME MEADE	Removals	0	0	0	0	1	0	0	0	0	0	0	0	1	1
ME MEADE	Exits	1	0	0	0	0	2	0	0	0	0	0	0	3	2
ME MEADE	OOH Last Day of the Month	2	2	2	2	3	3	1	1	1	1	1	1		2
MC MITCHELL	Removals	0	0	0	0	2	1	4	0	3	4	0	1	15	3
MC MITCHELL	Exits	4	1	4	0	0	0	0	2	0	0	3	1	15	3
MC MITCHELL	OOH Last Day of the Month	17	16	12	11	12	12	17	15	18	22	19	19		16
MR MORRIS	Removals	1	0	0	0	0	1	0	2	0	1	0	0	5	1
MR MORRIS	Exits	0	0	0	1	0	0	1	2	1	0	0	0	5	1
MR MORRIS	OOH Last Day of the Month	6	6	6	5	5	6	5	5	4	5	5	5		5
MT MORTON	Removals	1	1	1	0	2	0	0	0	2	0	0	0	7	1
MT MORTON	Exits	0	2	0	0	0	0	0	1	0	0	0	0	3	2
MT MORTON	OOH Last Day of the Month	3	4	4	4	6	6	6	5	7	7	7	7		6
NS NESS	Removals	0	0	0	0	1	1	0	0	0	0	0	1	3	1
NS NESS	Exits	0	0	0	0	0	1	0	1	0	0	0	0	2	1
NS NESS	OOH Last Day of the Month	1	1	1	1	2	2	2	1	1	1	1	1		1
NT NORTON	Removals	0	0	0	1	0	0	0	0	1	0	0	0	2	1
NT NORTON	Exits	0	0	0	1	0	2	0	0	0	0	0	1	4	1
NT NORTON	OOH Last Day of the Month	12	12	11	12	12	10	8	8	8	9	7	6		10
OB OSBORNE	Removals	0	0	0	1	0	0	1	0	0	0	0	0	2	1
OB OSBORNE	Exits	2	0	0	0	0	1	0	0	0	0	0	0	3	2
OB OSBORNE	OOH Last Day of the Month	1	1	1	2	2	1	2	2	2	2	2	2		2
OT OTTAWA	Removals	2	1	0	0	0	0	0	3	0	0	0	0	6	2
OT OTTAWA	Exits	0	1	0	0	0	0	0	1	1	0	0	0	3	1
OT OTTAWA	OOH Last Day of the Month	4	4	4	4	4	4	4	6	5	5	5	5		5
PN PAWNEE	Removals	0	6	2	0	2	1	3	1	2	4	3	0	24	3
PN PAWNEE	Exits	1	4	6	3	3	1	1	0	0	4	1	1	25	3
PN PAWNEE	OOH Last Day of the Month	38	33	35	32	31	31	32	31	34	35	37	34		34
PL PHILLIPS	Removals	1	1	0	0	0	0	0	6	0	1	0	0	9	2
PL PHILLIPS	Exits	0	0	0	0	0	0	0	4	0	0	0	0	4	4
PL PHILLIPS	OOH Last Day of the Month	15	16	15	15	13	14	14	16	18	20	19	20		16
RA RAWLINS	Removals	0	2	0	1	0	0	0	0	0	0	0	0	3	2
RA RAWLINS	Exits	0	0	1	1	0	0	1	0	0	0	0	0	3	1
RA RAWLINS	OOH Last Day of the Month	2	4	3	3	3	3	2	2	2	2	2	2		3
RN RENO	Removals	19	13	9	16	18	12	17	19	15	13	28	12	191	16
RN RENO	Exits	11	12	13	15	15	9	14	8	0	14	8	7	126	11
RN RENO	OOH Last Day of the Month	219	223	219	220	220	222	229	235	251	253	273	271		236
RP REPUBLIC	Removals	5	0	0	0	0	5	0	2	2	2	0	2	18	3
RP REPUBLIC	Exits	1	0	0	0	0	0	0	0	0	0	1	0	2	1
RP REPUBLIC	OOH Last Day of the Month	13	13	13	13	13	18	18	20	23	24	23	23		18
RC RICE	Removals	1	2	2	0	4	0	4	2	1	4	2	3	25	3
RC RICE	Exits	3	2	2	1	1	5	3	0	2	2	7	2	30	3
RC RICE	OOH Last Day of the Month	30	31	31	30	33	28	29	31	30	34	33	28		31
RL RILEY	Removals	5	6	0	5	2	5	2	2	8	8	0	4	47	5
RL RILEY	Exits	3	9	1	7	2	3	6	5	13	4	4	3	60	5
RL RILEY	OOH Last Day of the Month	72	70	69	68	67	70	65	64	59	62	56	56		65
RO ROOKS	Removals	0	0	0	4	0	3	1	0	0	1	0	0	9	2
RO ROOKS	Exits	0	0	0	0	0	0	0	0	0	0	0	0	0	0
RO ROOKS	OOH Last Day of the Month	5	5	4	8	8	11	12	12	12	13	13	13		10

RH RUSH	Removals	0	3	0	4	1	0	4	1	0	0	0	0	13	3
RH RUSH	Exits	0	0	2	0	0	0	0	0	0	0	0	0	2	2
RH RUSH	OOH Last Day of the Month	3	6	4	8	8	8	13	14	14	14	14	14		10
RS RUSSELL	Removals	1	0	3	1	0	1	0	3	3	2	0	3	17	2
RS RUSSELL	Exits	0	5	2	2	1	0	1	1	0	1	1	5	19	2
RS RUSSELL	OOH Last Day of the Month	26	21	22	21	20	21	20	22	25	26	25	23		23
SA SALINE	Removals	10	4	11	11	5	4	15	17	10	9	11	14	121	10
SA SALINE	Exits	10	11	11	4	8	12	9	10	7	9	6	3	100	8
SA SALINE	OOH Last Day of the Month	155	149	150	160	155	148	157	161	169	171	177	181		161
SC SCOTT	Removals	0	0	0	4	3	0	0	0	0	0	4	1	12	3
SC SCOTT	Exits	0	0	0	0	0	3	0	1	0	0	0	0	4	2
SC SCOTT	OOH Last Day of the Month	7	7	7	11	14	11	11	10	9	9	9	13		10
SW SEWARD	Removals	0	1	0	8	3	1	2	6	1	4	5	4	35	4
SW SEWARD	Exits	1	1	1	4	2	2	0	0	1	2	2	2	18	2
SW SEWARD	OOH Last Day of the Month	32	33	32	36	38	38	38	43	43	43	48	49		39
SD SHERIDAN	Removals	0	0	2	0	0	0	0	0	0	0	0	0	2	2
SD SHERIDAN	Exits	0	0	0	0	0	0	0	0	0	0	0	0	0	0
SD SHERIDAN	OOH Last Day of the Month	0	0	2	2	2	2	2	2	2	2	2	2		2
SH SHERMAN	Removals	0	1	2	3	3	1	0	0	0	0	4	0	14	2
SH SHERMAN	Exits	0	0	2	1	0	1	2	0	0	0	0	2	8	2
SH SHERMAN	OOH Last Day of the Month	13	12	13	15	18	19	15	15	16	16	16	14		15
SM SMITH	Removals	0	0	0	0	0	0	0	1	0	0	0	1	2	1
SM SMITH	Exits	1	0	0	0	0	0	0	0	0	0	0	0	1	1
SM SMITH	OOH Last Day of the Month	1	3	3	3	3	4	4	5	5	5	5	6		4
SF STAFFORD	Removals	0	0	1	0	0	0	0	2	0	0	0	0	3	2
SF STAFFORD	Exits	2	0	0	0	0	0	0	0	0	0	0	0	2	2
SF STAFFORD	OOH Last Day of the Month	7	7	8	8	8	8	8	10	10	10	10	10		9
ST STANTON	Removals	0	1	0	0	0	0	0	1	2	0	0	0	4	1
ST STANTON	Exits	0	1	0	0	0	0	0	1	1	0	0	0	3	1
ST STANTON	OOH Last Day of the Month	5	5	5	5	5	5	5	5	6	6	6	6		5
SV STEVENS	Removals	0	0	0	0	0	0	0	3	0	0	2	0	5	3
SV STEVENS	Exits	0	0	1	1	0	0	0	0	0	0	0	2	4	1
SV STEVENS	OOH Last Day of the Month	4	4	3	2	2	2	2	4	5	5	7	5		4
TH THOMAS	Removals	7	0	0	2	4	2	1	3	2	1	0	0	22	3
TH THOMAS	Exits	0	1	0	0	0	0	1	0	0	1	2	2	7	1
TH THOMAS	OOH Last Day of the Month	20	18	13	19	23	24	24	28	30	32	31	27		24
TR TREGO	Removals	0	0	0	0	0	0	0	0	1	0	0	0	1	1
TR TREGO	Exits	0	2	0	0	0	0	1	0	0	0	0	0	3	2
TR TREGO	OOH Last Day of the Month	4	2	2	2	2	2	1	1	2	4	2	2		2
WA WALLACE	Removals	0	0	0	0	0	0	0	0	0	0	0	0	0	0
WA WALLACE	Exits	0	0	0	0	0	0	0	0	0	0	0	0	0	0
WA WALLACE	OOH Last Day of the Month	3	3	3	3	3	3	3	3	3	3	3	3		3
WS WASHINGTON	Removals	0	0	0	0	0	0	0	0	0	4	0	0	4	4
WS WASHINGTON	Exits	0	0	0	0	0	1	0	0	1	0	0	0	2	1
WS WASHINGTON	OOH Last Day of the Month	14	14	14	14	14	13	13	13	9	12	12	12		13
WH WICHITA	Removals	0	0	0	0	0	0	0	2	0	0	0	0	2	2
WH WICHITA	Exits	0	0	0	0	0	0	0	0	0	0	0	0	0	0
WH WICHITA	OOH Last Day of the Month	2	2	2	2	2	2	2	4	4	4	4	4		3

BA BARBER	Removals	0	1	2	0	0	0	0	0	0	0	0	2	5	2
BA BARBER	Exits	0	0	1	1	0	0	0	0	1	2	0	0	5	1
BA BARBER	OOH Last Day of the Month	6	6	7	6	6	5	5	5	4	2	2	4		5
BU BUTLER	Removals	9	8	13	14	11	7	6	11	10	8	8	7	112	9
BU BUTLER	Exits	7	8	9	10	6	12	7	6	9	9	12	3	98	8
BU BUTLER	OOH Last Day of the Month	177	165	173	170	175	172	168	175	178	174	170	176		173
CL COWLEY	Removals	9	1	10	7	8	2	1	8	0	5	5	14	70	6
CL COWLEY	Exits	4	7	2	0	1	3	4	1	7	1	0	6	36	4
CL COWLEY	OOH Last Day of the Month	91	85	94	94	102	100	100	103	97	102	108	116		99
EK ELK	Removals	0	0	0	0	1	0	0	0	0	0	0	0	1	1
EK ELK	Exits	1	0	0	0	0	0	1	1	0	0	1	0	4	1
EK ELK	OOH Last Day of the Month	7	7	7	7	8	8	8	6	6	6	6	5		7
GW GREENWOOD	Removals	0	2	2	4	1	0	3	0	1	1	3	0	17	2
GW GREENWOOD	Exits	0	4	1	4	1	0	2	3	0	0	4	2	21	3
GW GREENWOOD	OOH Last Day of the Month	27	27	26	25	29	29	30	30	31	32	26	25		28
HP HARPER	Removals	0	0	0	1	1	0	0	0	0	1	2	1	6	1
HP HARPER	Exits	0	0	2	0	0	1	0	0	0	0	2	0	5	2
HP HARPER	OOH Last Day of the Month	9	9	7	8	9	8	8	8	8	9	7	10		8
KM KINGMAN	Removals	10	0	4	0	1	0	3	0	4	1	1	0	24	3
KM KINGMAN	Exits	1	6	0	1	1	1	1	0	1	3	0	1	16	2
KM KINGMAN	OOH Last Day of the Month	34	27	27	30	29	25	27	28	31	30	29	31		29
PR PRATT	Removals	0	3	4	0	1	0	1	3	0	0	1	0	13	2
PR PRATT	Exits	3	0	0	0	0	3	0	0	1	0	5	0	12	3
PR PRATT	OOH Last Day of the Month	19	22	26	21	24	21	22	26	25	25	21	21		23
SG SEDGWICK	Removals	52	43	48	40	22	53	37	28	32	39	47	32	473	39
SG SEDGWICK	Exits	45	67	37	52	94	34	31	27	49	26	62	59	583	49
SG SEDGWICK	OOH Last Day of the Month	1022	1003	1007	999	928	947	953	958	946	958	943	919		965
SU SUMNER	Removals	4	9	8	10	2	0	1	6	7	3	3	3	56	5
SU SUMNER	Exits	5	1	1	0	4	6	3	6	2	10	2	1	41	4
SU SUMNER	OOH Last Day of the Month	79	87	88	108	106	102	97	97	104	94	95	98		96

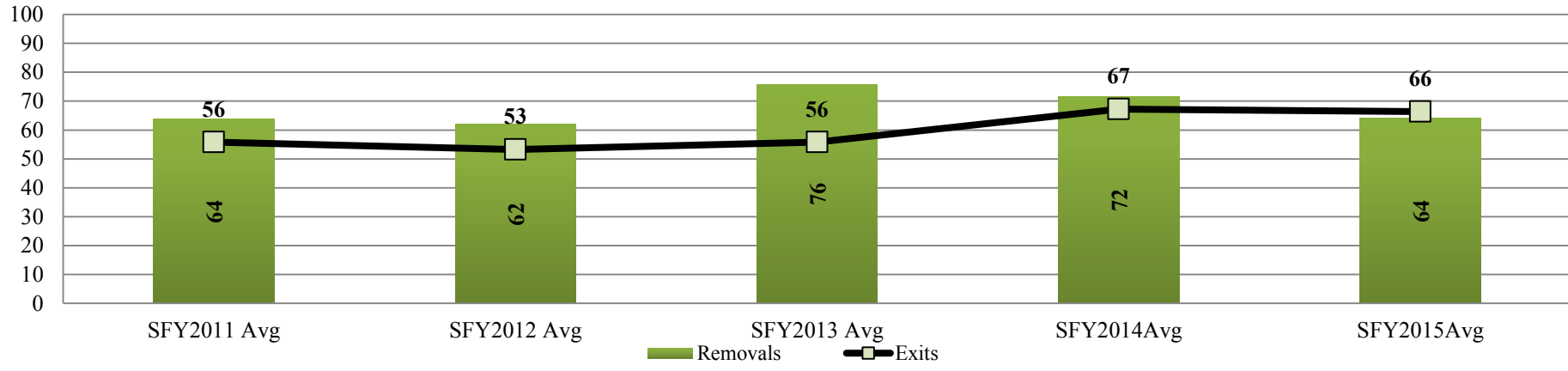
Data Sources:

Removals- from FACTS

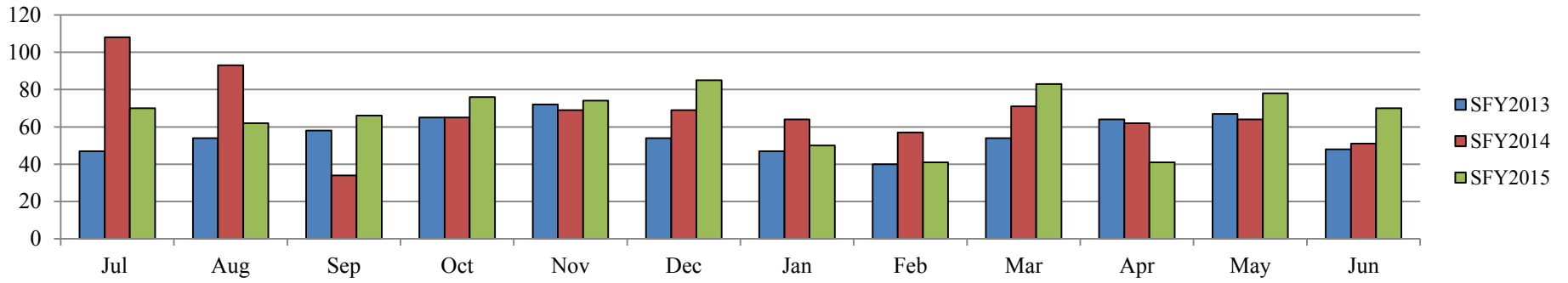
Exits- from FACTS

OOH Last Day of the Month- from FACTS

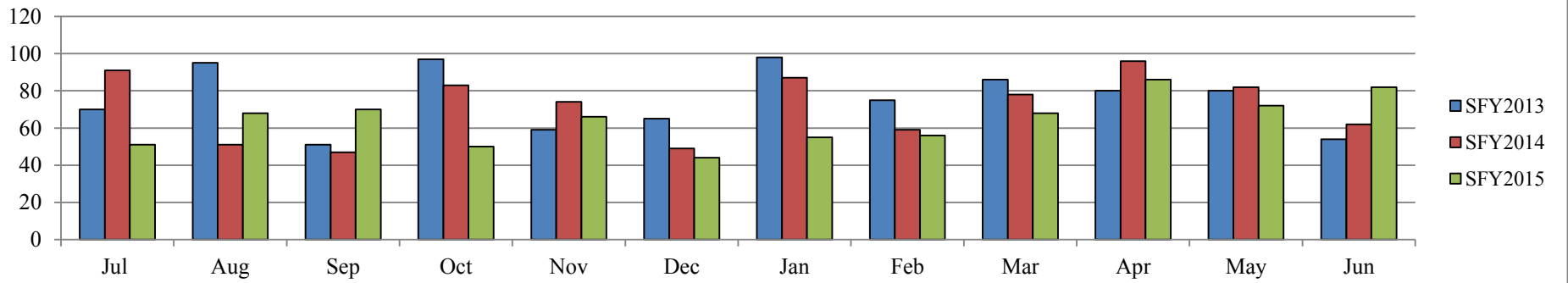
Kansas City Region Fiscal Year Average Removals and Exits SFY2011-SFY2015

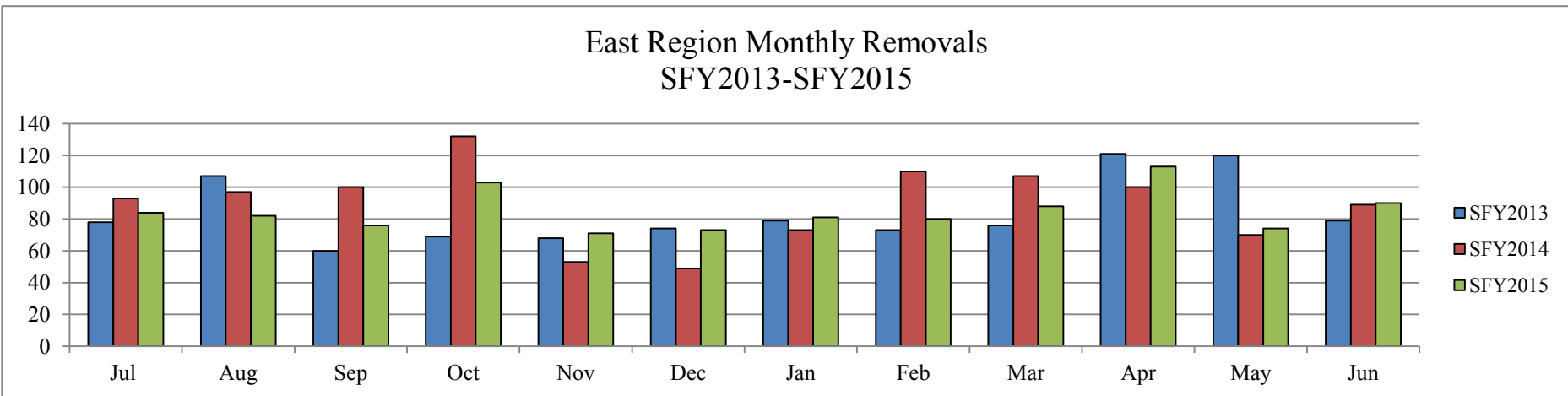
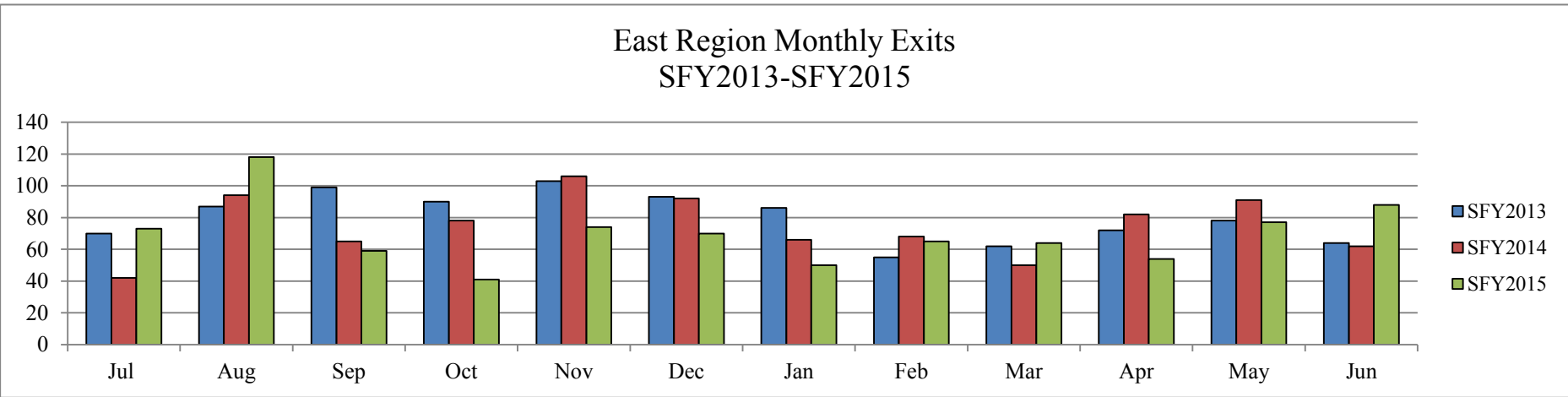
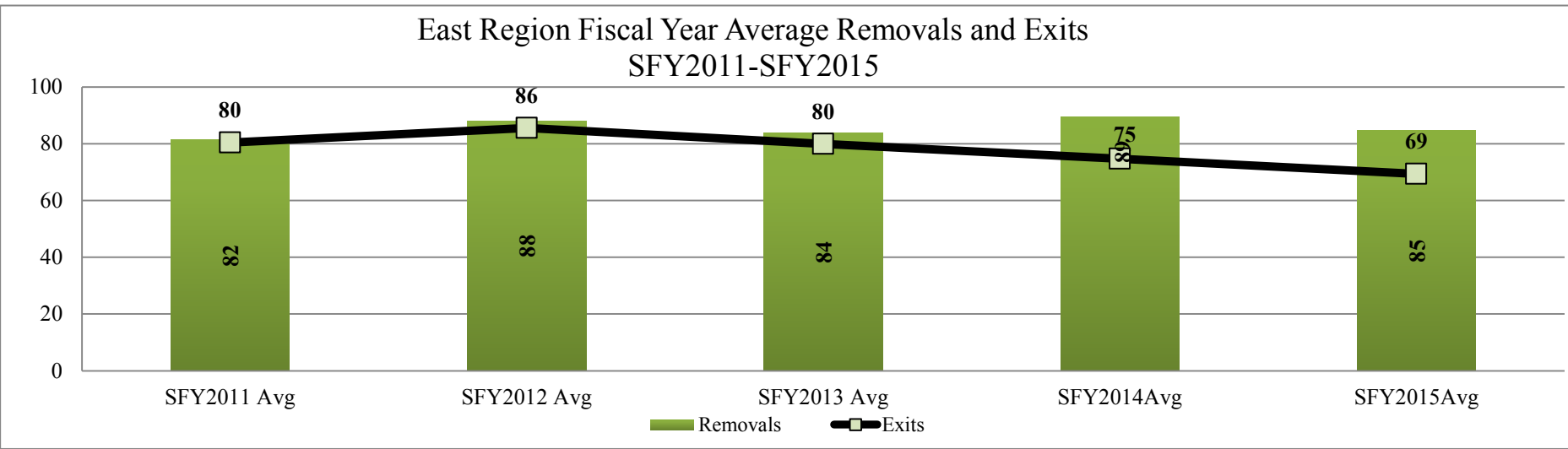


Kansas City Region Monthly Exits SFY2013-SFY2015

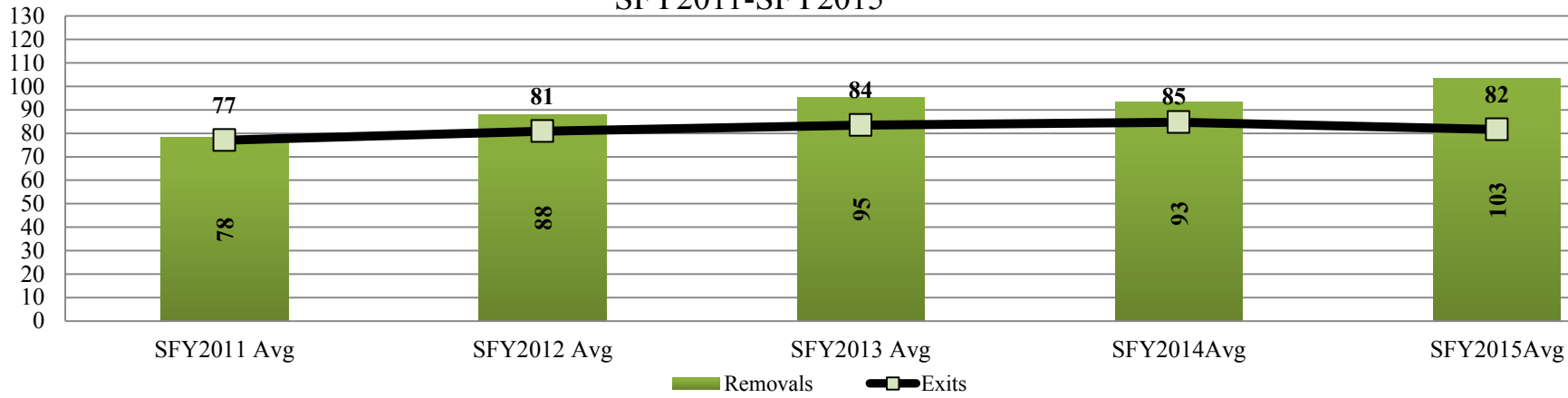


Kansas City Region Monthly Removals SFY2013-SFY2015

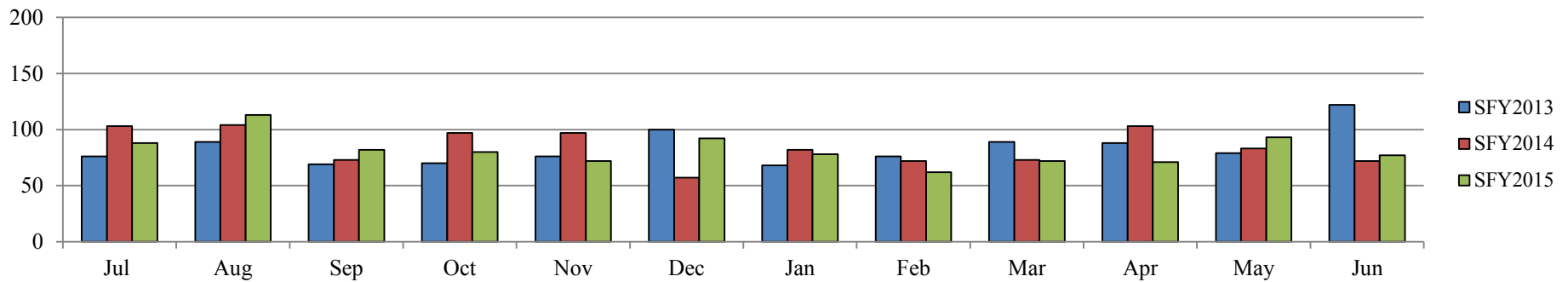




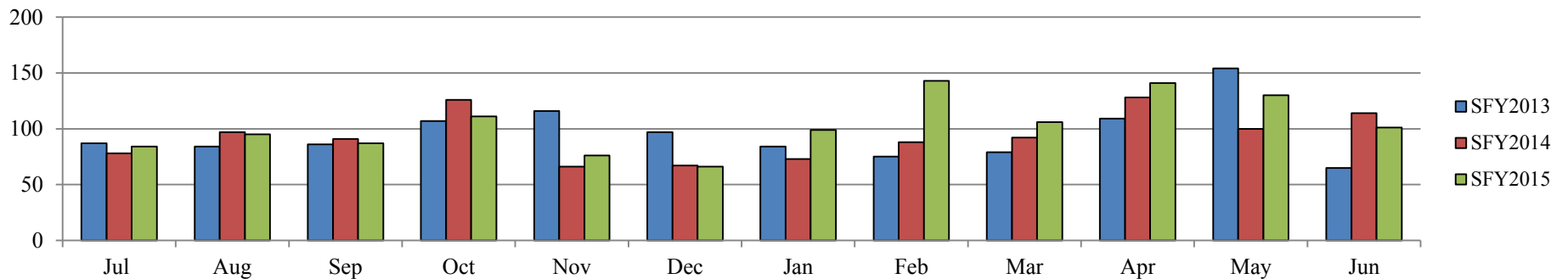
West Region Fiscal Year Average Removals and Exits SFY2011-SFY2015



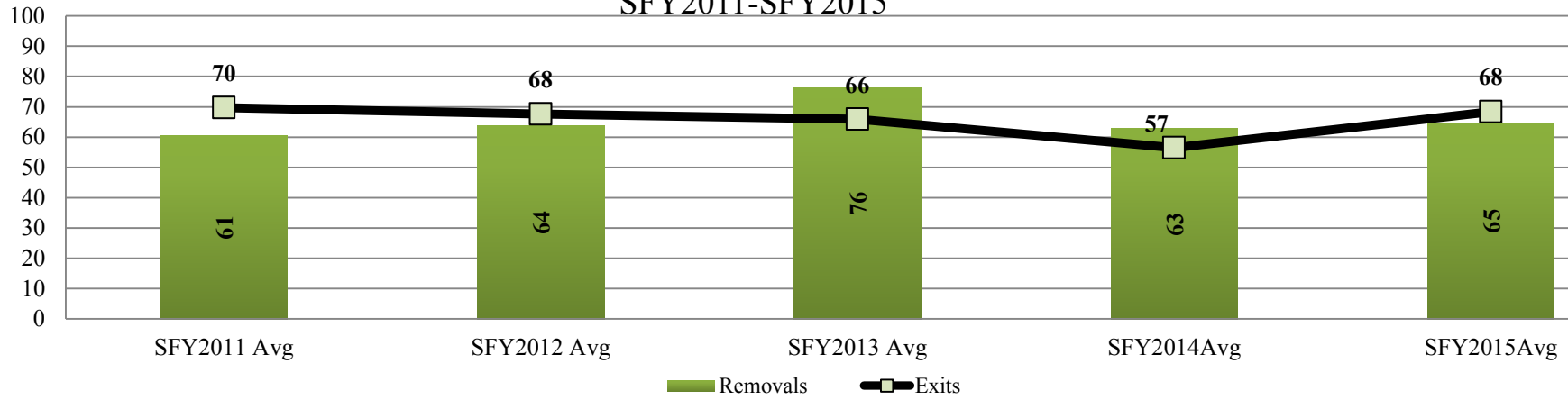
West Region Monthly Exits SFY2013-SFY2015



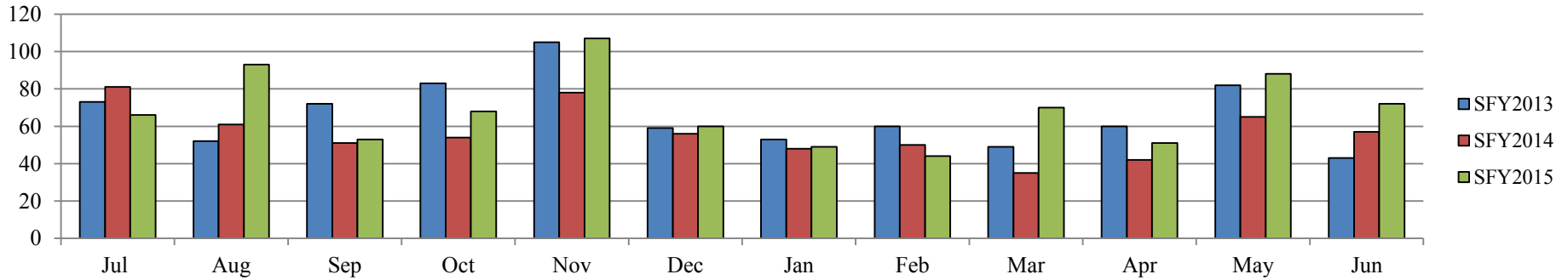
West Region Monthly Removals SFY2013-SFY2015



Wichita Region Fiscal Year Average Removals and Exits
SFY2011-SFY2015



Wichita Region Monthly Exits
SFY2013-SFY2015



Wichita Region Monthly Removals
SFY2013-SFY2015

