



FY 2014 Removals, Discharges and Out of Home Summary (FACTS)

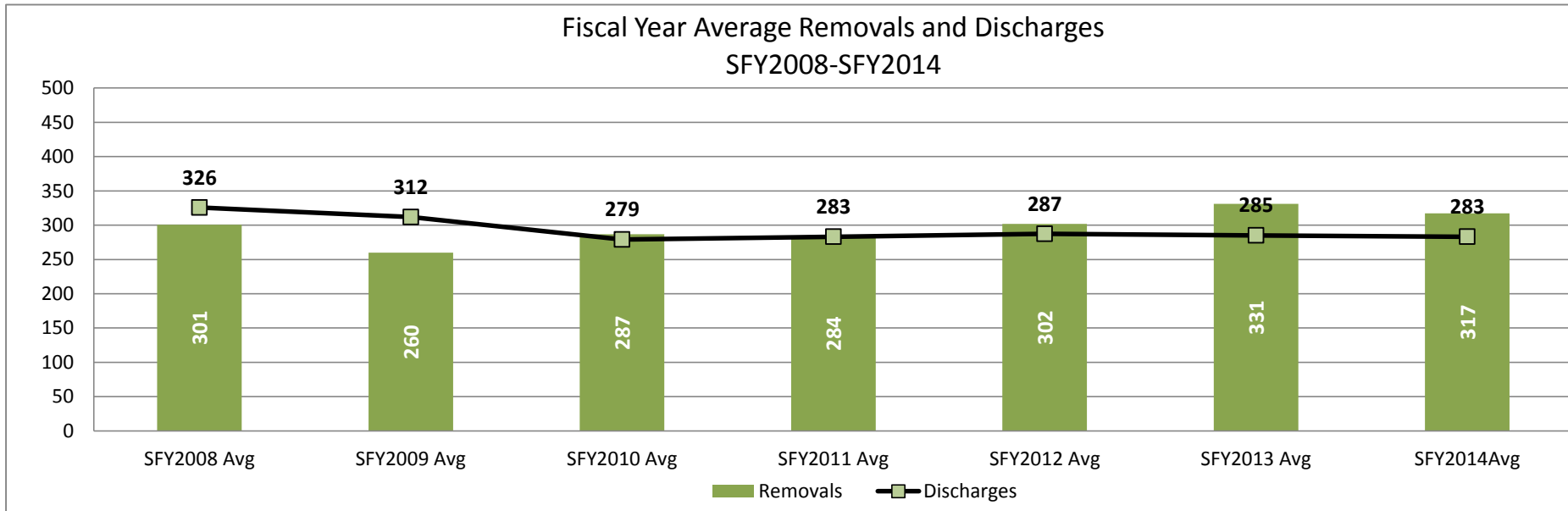
This report contains information on the number children removed into foster care in a given month, the number of children who discharged from foster care in a given month, and the number of children who are in a foster care placement outside of their home (OOH) on the last day of each month. Information is provided by DCF Region and County.

Strong Families Make a Strong Kansas

Updated: 7/14/2014

By DCF Region	Type of Information	Jul	Aug	Sep	Oct	Nov	Dec	Jan	Feb	Mar	Apr	May	Jun	Fiscal year Total	Fiscal year Average
Kansas City Region	Removals	91	51	47	83	74	49	87	59	78	96	82	62	859	72
Kansas City Region	Discharges	108	93	34	65	69	69	64	57	71	62	64	51	807	67
Kansas City Region	OOH Last Day of the Month	1386	1320	1331	1354	1380	1348	1362	1387	1394	1424	1413	1405		1,375
East Region	Removals	93	97	100	132	53	49	73	110	107	100	70	89	1,073	89
East Region	Discharges	42	94	65	78	106	92	66	68	50	82	91	62	896	75
East Region	OOH Last Day of the Month	1594	1600	1645	1704	1658	1623	1639	1673	1720	1752	1750	1736		1,675
West Region	Removals	78	97	91	126	66	67	73	88	92	128	100	114	1,120	93
West Region	Discharges	103	104	73	97	97	57	82	72	73	103	83	72	1,016	85
West Region	OOH Last Day of the Month	1458	1428	1455	1516	1488	1475	1465	1496	1508	1554	1572	1583		1,500
Wichita Region	Removals	53	81	51	56	56	81	59	58	62	67	54	75	753	63
Wichita Region	Discharges	81	61	51	54	78	56	48	50	35	42	65	57	678	57
Wichita Region	OOH Last Day of the Month	1332	1328	1349	1338	1317	1343	1356	1390	1397	1426	1433	1443		1,371
State	Removals	315	326	289	397	249	246	292	315	339	391	306	340	3,805	317
State	Discharges	334	352	223	294	350	274	260	247	229	289	303	242	3,397	283
State	OOH Last Day of the Month	5770	5676	5780	5912	5843	5789	5822	5946	6019	6156	6168	6167		5,921

Fiscal Year Average Removals and Discharges
SFY2008-SFY2014



Data Sources:

Removals- from FACTS

Discharges- Discharges from FACTS

OOH Last Day of the Month- from FACTS

Information By County grouped in DCF Regions

County	Type of Information	Jul	Aug	Sep	Oct	Nov	Dec	Jan	Feb	Mar	Apr	May	Jun	Fiscal year Total	Fiscal year Average
AL ALLEN	Removals	1	6	1	2	1	2	3	10	4	7	6	9	52	4
AL ALLEN	Discharges	1	3	0	1	1	2	4	2	2	0	6	2	24	2
AL ALLEN	OOH Last Day of the Month	45	47	47	52	57	51	54	64	65	69	70	80		58
AN ANDERSON	Removals	2	0	1	0	2	0	1	0	0	4	1	0	11	2
AN ANDERSON	Discharges	0	0	1	0	0	0	0	0	1	2	0	1	5	1
AN ANDERSON	OOH Last Day of the Month	10	10	10	10	12	12	11	10	10	14	13	12		11
BB BOURBON	Removals	3	4	3	10	1	1	14	6	8	9	4	5	68	6
BB BOURBON	Discharges	0	1	1	3	7	2	1	1	4	8	4	4	36	3
BB BOURBON	OOH Last Day of the Month	75	79	80	91	79	79	91	95	97	103	103	98		89
BR BROWN	Removals	0	2	3	5	2	7	0	2	13	4	2	0	40	4
BR BROWN	Discharges	0	3	0	9	6	3	1	2	1	5	5	2	37	4
BR BROWN	OOH Last Day of the Month	76	70	72	70	65	69	64	60	66	68	70	70		68
CQ CHAUTAUQUA	Removals	4	0	0	0	0	0	0	0	0	0	0	1	5	3
CQ CHAUTAUQUA	Discharges	0	4	0	0	0	0	0	1	0	0	0	0	5	3
CQ CHAUTAUQUA	OOH Last Day of the Month	6	5	5	5	5	5	5	5	5	5	5	6		5
CK CHEROKEE	Removals	7	6	0	11	4	9	2	7	15	4	0	3	68	7
CK CHEROKEE	Discharges	1	13	6	5	3	0	5	1	7	2	7	1	51	5
CK CHEROKEE	OOH Last Day of the Month	67	64	61	66	67	72	74	81	92	95	86	81		76
CF COFFEY	Removals	0	0	1	0	0	0	0	2	0	1	0	2	6	2
CF COFFEY	Discharges	1	3	0	0	3	0	0	0	0	0	2	0	9	2
CF COFFEY	OOH Last Day of the Month	12	6	7	8	8	8	8	8	8	9	7	8		8
CR CRAWFORD	Removals	5	5	8	14	6	8	9	22	9	8	8	6	108	9
CR CRAWFORD	Discharges	2	14	7	7	8	9	9	10	3	2	3	5	79	7
CR CRAWFORD	OOH Last Day of the Month	143	136	138	149	147	154	157	169	173	179	184	173		159
DP DONIPHAN	Removals	0	0	0	0	0	0	3	1	0	1	4	0	9	2
DP DONIPHAN	Discharges	1	0	0	0	2	0	1	0	0	0	1	0	5	1
DP DONIPHAN	OOH Last Day of the Month	22	21	21	20	18	18	17	18	15	16	19	18		19
FR FRANKLIN	Removals	7	4	9	4	8	0	10	1	4	2	4	2	55	5
FR FRANKLIN	Discharges	0	8	3	5	2	2	3	6	1	2	1	7	40	4
FR FRANKLIN	OOH Last Day of the Month	51	54	62	59	65	63	71	65	64	63	61	64		62
JA JACKSON	Removals	4	1	4	6	0	0	4	1	3	2	5	0	30	3
JA JACKSON	Discharges	1	1	0	3	1	7	1	0	0	0	1	2	17	2
JA JACKSON	OOH Last Day of the Month	22	17	21	28	28	25	28	29	33	35	34	30		28
JF JEFFERSON	Removals	6	4	2	4	1	0	1	3	1	6	3	3	34	3
JF JEFFERSON	Discharges	3	2	1	1	3	6	5	6	0	4	0	1	32	3
JF JEFFERSON	OOH Last Day of the Month	48	45	41	45	45	43	39	41	42	46	49	50		45
LB LABETTE	Removals	4	4	5	12	0	2	0	2	2	2	3	4	40	4
LB LABETTE	Discharges	1	1	4	0	3	12	5	1	6	5	4	7	49	4
LB LABETTE	OOH Last Day of the Month	61	63	65	74	70	59	51	51	51	47	49	50		58
LN LINN	Removals	0	3	1	0	0	0	1	3	1	0	0	3	12	2
LN LINN	Discharges	0	0	0	0	3	3	0	0	1	1	0	0	8	2
LN LINN	OOH Last Day of the Month	11	13	14	14	13	10	11	14	14	13	13	12		13
MS MARSHALL	Removals	1	3	0	1	2	0	0	2	6	9	1	4	29	3
MS MARSHALL	Discharges	1	4	3	2	2	0	0	1	1	1	0	3	18	2
MS MARSHALL	OOH Last Day of the Month	19	18	17	16	18	17	16	18	20	26	29	27		20

MI MIAMI	Removals	8	9	0	2	3	1	3	7	3	3	1	7	47	4
MI MIAMI	Discharges	0	4	3	4	6	7	2	4	1	4	15	1	51	5
MI MIAMI	OOH Last Day of the Month	64	72	71	64	50	52	54	56	57	58	53	55		59
MG MONTGOMERY	Removals	3	12	13	8	3	2	1	9	9	9	5	11	85	7
MG MONTGOMERY	Discharges	0	5	4	1	0	6	3	3	1	6	4	0	33	4
MG MONTGOMERY	OOH Last Day of the Month	93	104	118	118	120	115	113	121	130	133	131	141		120
NM NEMAHA	Removals	0	0	0	1	0	0	0	0	4	0	1	1	7	2
NM NEMAHA	Discharges	0	2	0	0	0	1	0	1	1	1	0	0	6	1
NM NEMAHA	OOH Last Day of the Month	22	22	20	20	20	19	19	18	22	21	22	21		21
NO NEOSHO	Removals	5	6	2	1	0	0	1	1	8	2	0	9	35	4
NO NEOSHO	Discharges	1	0	4	1	3	1	2	0	1	1	2	1	17	2
NO NEOSHO	OOH Last Day of the Month	45	50	47	48	44	43	44	45	51	50	53	61		48
OS OSAGE	Removals	2	0	1	0	2	2	0	2	1	1	2	0	13	2
OS OSAGE	Discharges	1	0	0	2	1	0	0	0	2	1	0	0	7	1
OS OSAGE	OOH Last Day of the Month	9	8	9	7	8	8	8	10	11	11	13	13		10
PT POTTAWATOMIE	Removals	1	2	12	8	3	1	0	0	0	2	2	1	32	4
PT POTTAWATOMIE	Discharges	1	0	0	2	0	0	1	3	2	9	1	0	19	3
PT POTTAWATOMIE	OOH Last Day of the Month	25	28	39	46	48	48	48	38	36	35	35	34		38
SN SHAWNEE	Removals	29	21	31	37	13	12	16	24	12	21	13	13	242	20
SN SHAWNEE	Discharges	26	26	28	28	45	27	22	26	11	25	24	25	313	26
SN SHAWNEE	OOH Last Day of the Month	632	628	637	651	632	612	612	611	613	610	605	587		619
WB WABAUNSEE	Removals	0	0	2	0	1	0	0	0	0	0	0	1	4	1
WB WABAUNSEE	Discharges	1	0	0	1	1	0	0	0	0	0	3	0	6	2
WB WABAUNSEE	OOH Last Day of the Month	4	3	5	5	4	4	4	4	4	7	4	5		4
WL WILSON	Removals	1	5	1	4	1	1	2	1	3	2	5	0	26	2
WL WILSON	Discharges	0	0	0	3	4	3	0	0	1	3	8	0	22	4
WL WILSON	OOH Last Day of the Month	16	21	22	24	22	23	25	23	24	22	25	20		22
WO WOODSON	Removals	0	0	0	2	0	1	2	4	1	1	0	4	15	2
WO WOODSON	Discharges	0	0	0	0	2	1	1	0	3	0	0	0	7	2
WO WOODSON	OOH Last Day of the Month	16	16	16	14	13	14	15	19	17	17	17	20		16
AT ATCHISON	Removals	7	7	1	4	0	0	0	3	2	2	0	0	26	4
AT ATCHISON	Discharges	5	4	3	0	1	2	3	1	1	1	6	1	28	3
AT ATCHISON	OOH Last Day of the Month	34	39	35	39	39	36	34	35	36	34	30	28		35
DG DOUGLAS	Removals	8	5	4	2	3	3	8	4	9	5	15	5	71	6
DG DOUGLAS	Discharges	10	3	6	6	5	4	1	2	6	2	2	3	50	4
DG DOUGLAS	OOH Last Day of the Month	103	102	103	101	100	99	105	109	107	108	121	120		107
JO JOHNSON	Removals	32	23	23	38	39	19	43	25	39	56	30	32	399	33
JO JOHNSON	Discharges	32	45	17	32	26	36	29	34	32	29	27	27	366	31
JO JOHNSON	OOH Last Day of the Month	596	575	580	586	609	587	593	601	615	637	614	603		600
LV LEAVENWORTH	Removals	12	5	7	7	16	4	8	7	2	4	14	9	95	8
LV LEAVENWORTH	Discharges	5	8	2	9	3	12	8	7	8	15	6	12	95	8
LV LEAVENWORTH	OOH Last Day of the Month	141	132	134	134	148	137	132	131	118	115	120	117		130
WY WYANDOTTE	Removals	32	11	12	32	16	23	28	20	26	29	23	16	268	22
WY WYANDOTTE	Discharges	56	33	6	18	34	15	23	13	24	15	23	8	268	22
WY WYANDOTTE	OOH Last Day of the Month	512	472	479	494	484	489	498	511	518	530	528	537		504
BT BARTON	Removals	4	8	8	13	11	5	2	18	4	12	5	10	100	8
BT BARTON	Discharges	10	4	6	9	7	15	15	3	7	16	3	4	99	8
BT BARTON	OOH Last Day of the Month	155	152	155	163	167	161	163	177	169	171	166	169		164

GT GRANT	Removals	3	0	0	8	0	0	0	0	0	0	2	5	18	5
GT GRANT	Discharges	0	0	1	0	0	0	2	3	7	0	0	0	13	3
GT GRANT	OOH Last Day of the Month	12	8	8	16	18	16	10	10	7	6	7	12		11
GY GRAY	Removals	0	0	0	0	5	1	3	2	0	6	0	0	17	3
GY GRAY	Discharges	1	0	0	0	0	0	0	0	0	0	0	0	1	1
GY GRAY	OOH Last Day of the Month	1	1	1	1	6	7	10	10	10	16	16	18		8
GL GREELEY	Removals	0	0	0	0	0	0	0	0	0	0	0	2	2	2
GL GREELEY	Discharges	0	0	1	0	0	0	1	1	0	0	1	0	4	1
GL GREELEY	OOH Last Day of the Month	5	5	4	4	3	3	3	3	3	3	2	4		4
HM HAMILTON	Removals	0	0	0	1	0	1	0	0	1	0	0	0	3	1
HM HAMILTON	Discharges	0	2	0	0	0	0	0	0	0	0	0	0	2	2
HM HAMILTON	OOH Last Day of the Month	0	0	0	1	1	2	2	1	2	2	2	2		2
HV HARVEY	Removals	2	1	1	2	1	2	0	1	7	6	3	3	29	3
HV HARVEY	Discharges	1	5	3	5	3	0	2	0	0	1	0	0	20	3
HV HARVEY	OOH Last Day of the Month	48	45	43	39	36	37	37	38	45	50	52	55		44
HS HASKELL	Removals	0	0	0	1	0	0	1	0	0	0	0	0	2	1
HS HASKELL	Discharges	0	0	0	1	0	0	0	1	0	0	0	0	2	1
HS HASKELL	OOH Last Day of the Month	6	5	5	5	5	5	6	5	5	5	5	5		5
HG HODGEMAN	Removals	0	0	0	0	0	0	0	0	0	0	0	0	0	0
HG HODGEMAN	Discharges	0	0	0	0	0	0	0	0	0	0	1	0	1	1
HG HODGEMAN	OOH Last Day of the Month	1	2	2	2	2	2	2	2	2	2	1	1		2
JW JEWELL	Removals	0	0	0	0	0	0	0	0	0	0	0	1	1	1
JW JEWELL	Discharges	0	0	0	0	0	0	0	0	0	0	0	1	1	1
JW JEWELL	OOH Last Day of the Month	4	4	4	4	4	4	4	4	4	4	4	4		4
KE KEARNY	Removals	0	0	0	0	2	0	0	2	0	0	1	0	5	2
KE KEARNY	Discharges	0	0	1	0	0	0	0	2	0	0	2	0	5	2
KE KEARNY	OOH Last Day of the Month	5	5	4	4	6	5	2	4	4	4	5	5		4
KW KIOWA	Removals	0	1	0	0	0	0	0	0	0	0	0	0	1	1
KW KIOWA	Discharges	0	0	0	0	0	0	0	0	1	0	0	0	1	1
KW KIOWA	OOH Last Day of the Month	0	1	1	1	0	0	0	0	0	0	0	0		1
LE LANE	Removals	0	0	0	0	0	0	1	0	1	2	0	0	4	1
LE LANE	Discharges	4	0	0	0	0	0	0	0	1	0	0	0	5	3
LE LANE	OOH Last Day of the Month	1	1	1	1	1	2	3	3	3	5	5	5		3
LC LINCOLN	Removals	0	1	0	0	0	0	3	0	0	0	0	2	6	2
LC LINCOLN	Discharges	4	1	0	0	0	0	0	0	0	0	0	0	5	3
LC LINCOLN	OOH Last Day of the Month	6	7	7	7	6	7	8	8	8	8	7	9		7
LG LOGAN	Removals	0	0	2	0	0	0	0	0	0	0	1	1	4	1
LG LOGAN	Discharges	1	0	2	2	0	0	2	1	0	0	0	0	8	2
LG LOGAN	OOH Last Day of the Month	5	4	5	3	3	3	3	3	3	3	4	5		4
LY LYON	Removals	1	15	10	7	3	2	3	5	7	1	5	6	65	5
LY LYON	Discharges	9	2	3	0	4	3	3	2	3	9	1	1	40	4
LY LYON	OOH Last Day of the Month	100	112	120	123	121	119	117	119	118	117	114	117		116
MN MARION	Removals	0	0	2	2	1	1	2	1	4	0	1	4	18	2
MN MARION	Discharges	0	0	0	1	4	4	3	4	1	3	1	0	21	3
MN MARION	OOH Last Day of the Month	19	19	18	19	20	14	13	14	17	14	14	18		17
MP MCPHERSON	Removals	5	4	0	0	0	2	0	4	0	1	0	2	18	3
MP MCPHERSON	Discharges	2	1	3	0	0	0	0	0	2	0	1	2	11	2
MP MCPHERSON	OOH Last Day of the Month	18	21	19	18	19	21	20	24	22	24	22	22		21

ME MEADE	Removals	0	0	0	0	0	0	0	0	0	2	1	0	3	2
ME MEADE	Discharges	0	0	0	2	1	0	0	1	0	0	0	0	4	1
ME MEADE	OOH Last Day of the Month	5	4	4	2	1	1	0	1	1	3	4	3		3
MC MITCHELL	Removals	1	1	1	4	2	0	0	2	0	3	6	0	20	3
MC MITCHELL	Discharges	4	1	0	8	4	1	0	0	0	2	0	3	23	3
MC MITCHELL	OOH Last Day of the Month	17	14	15	16	17	15	15	17	18	19	24	22		17
MR MORRIS	Removals	1	3	0	0	0	4	0	0	0	1	0	0	9	2
MR MORRIS	Discharges	0	0	0	1	0	0	2	1	1	0	0	2	7	1
MR MORRIS	OOH Last Day of the Month	7	10	10	10	10	12	10	9	8	9	5	5		9
MT MORTON	Removals	0	0	2	0	0	0	1	0	0	0	0	0	3	2
MT MORTON	Discharges	0	0	0	1	0	0	0	0	0	0	1	0	2	1
MT MORTON	OOH Last Day of the Month	6	3	5	8	8	8	6	6	3	3	3	3		5
NS NESS	Removals	1	0	0	0	0	0	0	0	0	0	0	0	1	1
NS NESS	Discharges	0	1	0	0	0	0	0	0	0	0	0	0	1	1
NS NESS	OOH Last Day of the Month	3	2	2	1	1	2	1	1	3	3	3	1		2
NT NORTON	Removals	4	1	2	0	1	0	3	0	1	1	0	0	13	2
NT NORTON	Discharges	0	0	2	0	0	1	0	2	0	0	2	0	7	2
NT NORTON	OOH Last Day of the Month	9	10	9	9	10	9	12	12	13	14	12	12		11
OB OSBORNE	Removals	0	0	0	0	0	0	3	0	0	0	0	0	3	3
OB OSBORNE	Discharges	0	0	0	0	0	0	0	0	0	0	0	0	0	0
OB OSBORNE	OOH Last Day of the Month	2	2	2	2	2	2	3	3	3	3	3	3		3
OT OTTAWA	Removals	0	0	0	0	0	0	0	0	0	0	0	1	1	1
OT OTTAWA	Discharges	0	0	0	0	1	0	0	0	0	0	1	0	2	1
OT OTTAWA	OOH Last Day of the Month	4	4	4	4	3	3	3	2	2	2	2	2		3
PN PAWNEE	Removals	1	5	0	3	3	0	0	4	0	2	2	0	20	3
PN PAWNEE	Discharges	3	3	0	3	0	2	0	0	1	1	3	0	16	2
PN PAWNEE	OOH Last Day of the Month	38	42	42	39	41	39	33	37	36	37	42	41		39
PL PHILLIPS	Removals	0	1	0	0	0	0	2	0	1	0	1	7	12	2
PL PHILLIPS	Discharges	0	0	0	0	0	0	0	0	0	1	0	1	2	1
PL PHILLIPS	OOH Last Day of the Month	2	3	3	2	3	3	7	7	8	7	8	14		6
RA RAWLINS	Removals	0	0	2	0	1	0	0	0	0	0	1	0	4	1
RA RAWLINS	Discharges	1	0	0	0	0	0	0	0	0	0	0	0	1	1
RA RAWLINS	OOH Last Day of the Month	0	0	2	2	3	3	3	3	3	2	3	2		3
RN RENO	Removals	8	9	26	21	3	7	5	12	18	10	11	23	153	13
RN RENO	Discharges	10	15	3	5	10	10	5	11	3	16	11	13	112	9
RN RENO	OOH Last Day of the Month	164	155	175	193	186	187	187	190	205	203	205	212		189
RP REPUBLIC	Removals	0	0	0	0	0	1	0	1	0	0	2	0	4	1
RP REPUBLIC	Discharges	0	1	1	4	1	0	0	0	0	0	1	0	8	2
RP REPUBLIC	OOH Last Day of the Month	11	10	10	7	6	7	7	8	8	8	9	9		8
RC RICE	Removals	0	2	0	9	0	0	5	3	1	7	1	0	28	4
RC RICE	Discharges	1	0	4	3	3	2	2	1	0	4	3	3	26	3
RC RICE	OOH Last Day of the Month	28	30	26	33	27	28	29	31	32	34	32	32		30
RL RILEY	Removals	8	6	4	6	10	4	6	1	5	7	8	3	68	6
RL RILEY	Discharges	1	0	5	3	5	2	2	4	5	0	7	6	40	4
RL RILEY	OOH Last Day of the Month	52	54	49	56	64	64	65	64	67	70	73	72		63
RO ROOKS	Removals	0	0	0	0	0	0	0	0	0	4	0	0	4	4
RO ROOKS	Discharges	0	1	1	0	0	0	0	0	0	0	0	0	2	1
RO ROOKS	OOH Last Day of the Month	3	2	2	1	1	1	1	1	1	5	5	5		2

RH RUSH	Removals	0	0	0	0	0	0	2	0	0	0	0	2	2	
RH RUSH	Discharges	0	0	0	0	0	0	0	0	0	0	0	0	0	
RH RUSH	OOH Last Day of the Month	1	1	1	1	1	1	3	3	3	3	3		2	
RS RUSSELL	Removals	1	3	0	4	0	0	0	2	1	0	1	1	13	2
RS RUSSELL	Discharges	1	0	0	2	0	0	2	0	1	0	0	0	6	2
RS RUSSELL	OOH Last Day of the Month	18	20	21	24	23	23	20	22	23	23	24	25		22
SA SALINE	Removals	7	10	12	5	9	5	11	7	13	5	8	8	100	8
SA SALINE	Discharges	10	12	6	5	13	7	11	3	11	12	11	12	113	9
SA SALINE	OOH Last Day of the Month	161	166	171	173	165	160	167	168	171	171	168	156		166
SC SCOTT	Removals	0	0	1	0	0	1	0	0	0	0	0	0	2	1
SC SCOTT	Discharges	0	2	1	0	0	0	0	5	1	0	0	2	11	2
SC SCOTT	OOH Last Day of the Month	15	10	9	9	9	7	6	6	7	7	7	7		8
SW SEWARD	Removals	0	5	0	1	0	5	0	2	1	3	1	4	22	3
SW SEWARD	Discharges	4	2	1	1	0	0	1	2	1	4	0	0	16	2
SW SEWARD	OOH Last Day of the Month	29	29	28	28	29	34	33	35	36	36	33	33		32
SD SHERIDAN	Removals	0	0	0	0	0	0	0	0	0	0	0	0	0	0
SD SHERIDAN	Discharges	0	0	0	0	0	0	1	0	0	0	0	0	1	1
SD SHERIDAN	OOH Last Day of the Month	1	1	1	1	1	1	0	0	0	0	0	0		1
SH SHERMAN	Removals	0	0	0	1	0	0	0	0	0	0	5	0	6	3
SH SHERMAN	Discharges	0	0	0	0	0	0	0	0	0	1	0	0	1	1
SH SHERMAN	OOH Last Day of the Month	8	8	8	9	9	9	9	9	9	8	13	13		9
SM SMITH	Removals	0	0	0	0	0	0	0	0	0	0	1	0	1	1
SM SMITH	Discharges	0	0	0	0	0	0	0	0	0	0	0	0	0	0
SM SMITH	OOH Last Day of the Month	1	1	1	1	1	1	1	1	1	1	2	2		1
SF STAFFORD	Removals	0	0	0	0	0	0	0	0	0	1	0	0	1	1
SF STAFFORD	Discharges	0	2	0	0	1	0	3	0	0	0	0	0	6	2
SF STAFFORD	OOH Last Day of the Month	15	15	15	15	15	14	11	11	11	12	11	9		13
ST STANTON	Removals	0	0	3	0	0	0	0	0	0	0	0	0	3	3
ST STANTON	Discharges	0	0	0	0	0	0	0	0	0	0	0	2	2	2
ST STANTON	OOH Last Day of the Month	4	4	7	7	7	7	7	7	7	7	7	5		6
SV STEVENS	Removals	0	0	1	1	1	0	0	0	0	0	0	1	4	1
SV STEVENS	Discharges	0	0	0	1	6	0	0	0	0	0	0	0	7	4
SV STEVENS	OOH Last Day of the Month	7	1	2	2	3	3	3	3	3	3	3	4		3
TH THOMAS	Removals	0	0	1	1	0	1	3	0	0	0	1	0	7	1
TH THOMAS	Discharges	1	3	0	0	0	0	2	0	0	0	0	3	9	2
TH THOMAS	OOH Last Day of the Month	20	15	16	16	16	17	18	18	18	15	16	13		17
TR TREGO	Removals	0	1	0	1	0	0	0	1	0	0	0	0	3	1
TR TREGO	Discharges	0	0	0	1	3	0	0	0	1	0	0	0	5	2
TR TREGO	OOH Last Day of the Month	5	3	3	4	4	3	3	4	4	4	4	4		4
WA WALLACE	Removals	0	0	0	0	0	0	0	0	0	3	0	0	3	3
WA WALLACE	Discharges	0	0	0	0	0	0	0	0	0	0	0	0	0	0
WA WALLACE	OOH Last Day of the Month	0	0	0	0	0	0	0	0	0	3	3	3		3
WS WASHINGTON	Removals	0	0	0	0	0	3	0	0	3	6	0	0	12	4
WS WASHINGTON	Discharges	1	0	0	0	0	0	1	0	0	0	1	0	3	1
WS WASHINGTON	OOH Last Day of the Month	5	5	5	5	5	8	8	8	11	15	14	14		9
WH WICHITA	Removals	0	0	0	0	0	0	0	0	0	0	0	1	1	1
WH WICHITA	Discharges	0	2	0	0	0	0	0	0	0	0	0	0	2	2
WH WICHITA	OOH Last Day of the Month	3	3	3	3	3	2	2	2	1	1	1	2		2

BA BARBER	Removals	1	0	0	0	0	1	0	3	1	0	0	0	6	2
BA BARBER	Discharges	1	0	1	0	0	1	0	2	1	0	1	0	7	1
BA BARBER	OOH Last Day of the Month	5	2	2	2	2	3	3	5	6	6	8	5		4
BU BUTLER	Removals	3	21	8	11	7	10	5	10	9	18	5	13	120	10
BU BUTLER	Discharges	9	7	6	9	10	5	10	2	7	4	8	8	85	7
BU BUTLER	OOH Last Day of the Month	118	129	135	133	134	135	136	147	148	161	162	168		142
CL COWLEY	Removals	6	4	3	4	1	1	3	8	5	6	0	3	44	4
CL COWLEY	Discharges	6	4	3	6	2	3	0	0	0	0	1	2	27	3
CL COWLEY	OOH Last Day of the Month	59	58	62	63	63	62	65	72	77	81	82	85		69
EK ELK	Removals	0	0	0	0	0	1	1	0	3	0	0	1	6	2
EK ELK	Discharges	1	0	1	0	1	0	0	4	0	0	0	0	7	2
EK ELK	OOH Last Day of the Month	13	9	7	7	7	8	9	9	11	9	8	9		9
GW GREENWOOD	Removals	2	4	4	0	0	0	0	1	0	3	2	0	16	3
GW GREENWOOD	Discharges	1	2	0	0	4	0	0	0	0	2	1	0	10	2
GW GREENWOOD	OOH Last Day of the Month	35	37	41	41	38	37	34	34	33	31	29	27		35
HP HARPER	Removals	0	3	3	2	0	2	0	0	0	0	0	0	10	3
HP HARPER	Discharges	0	0	6	0	0	0	0	1	0	0	0	0	7	4
HP HARPER	OOH Last Day of the Month	6	7	9	11	11	13	13	11	11	11	11	9		10
KM KINGMAN	Removals	0	4	2	0	0	0	1	0	0	1	5	1	14	2
KM KINGMAN	Discharges	0	0	0	0	3	2	0	1	1	3	0	0	10	2
KM KINGMAN	OOH Last Day of the Month	18	24	25	24	24	23	24	22	19	19	24	25		23
PR PRATT	Removals	0	3	0	4	1	0	1	0	6	2	0	3	20	3
PR PRATT	Discharges	0	3	0	0	1	1	3	0	1	4	0	0	13	2
PR PRATT	OOH Last Day of the Month	16	15	15	19	18	18	16	16	21	22	18	21		18
SG SEDGWICK	Removals	35	34	30	34	45	63	48	36	31	34	34	51	475	40
SG SEDGWICK	Discharges	56	40	28	32	54	39	33	36	23	28	54	40	463	39
SG SEDGWICK	OOH Last Day of the Month	973	959	972	962	945	969	985	1003	999	1011	1008	1015		983
SU SUMNER	Removals	6	8	1	1	2	3	0	0	7	3	8	3	42	4
SU SUMNER	Discharges	7	5	6	7	3	5	2	4	2	1	0	7	49	4
SU SUMNER	OOH Last Day of the Month	89	88	81	76	75	75	71	71	72	75	83	79		78

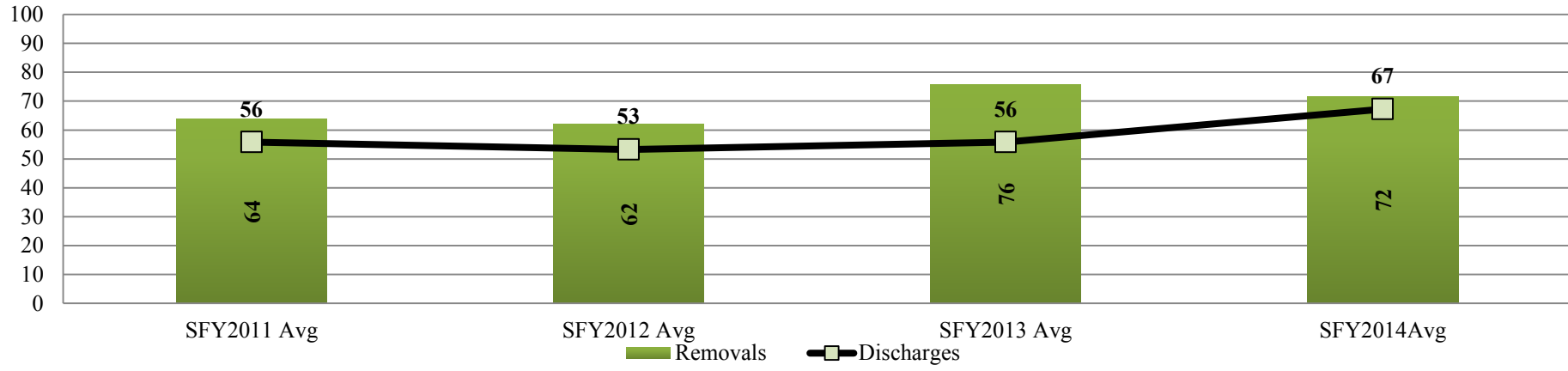
Data Sources:

Removals- from FACTS

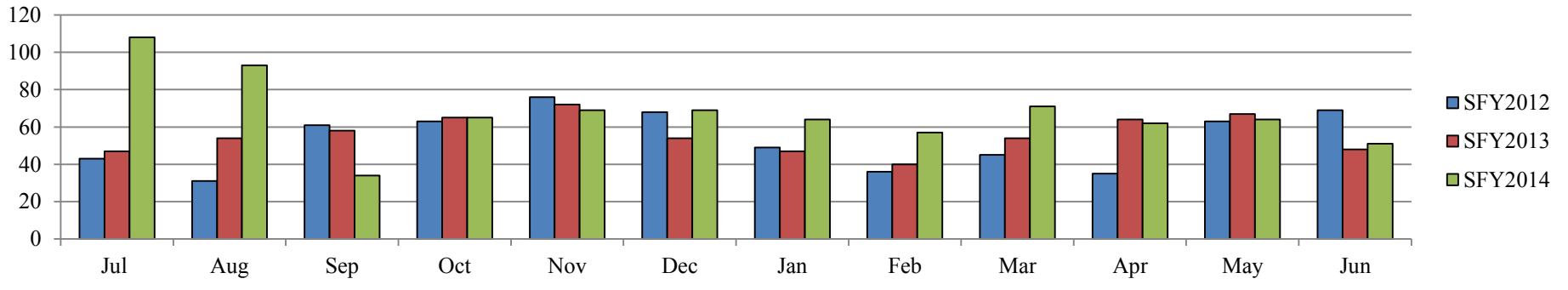
Discharges- from FACTS

OOH Last Day of the Month- from FACTS

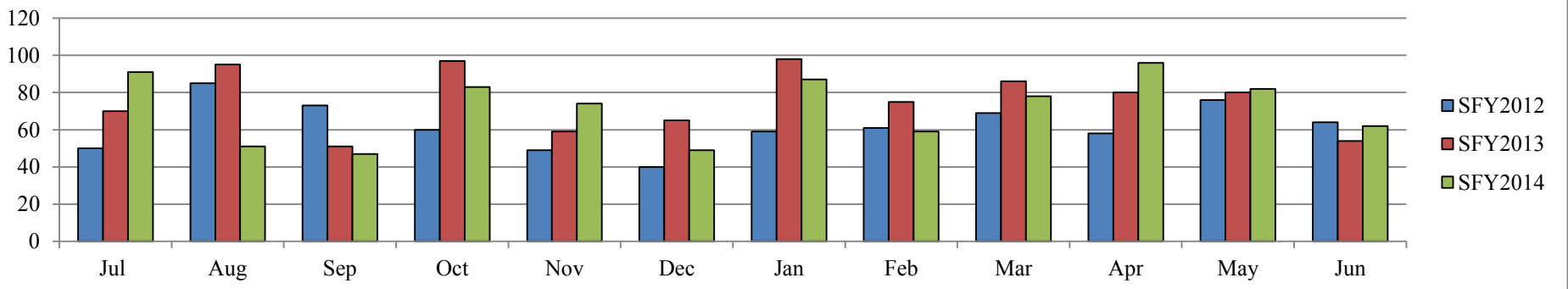
Kansas City Region Fiscal Year Average Removals and Discharges SFY2011-SFY2014



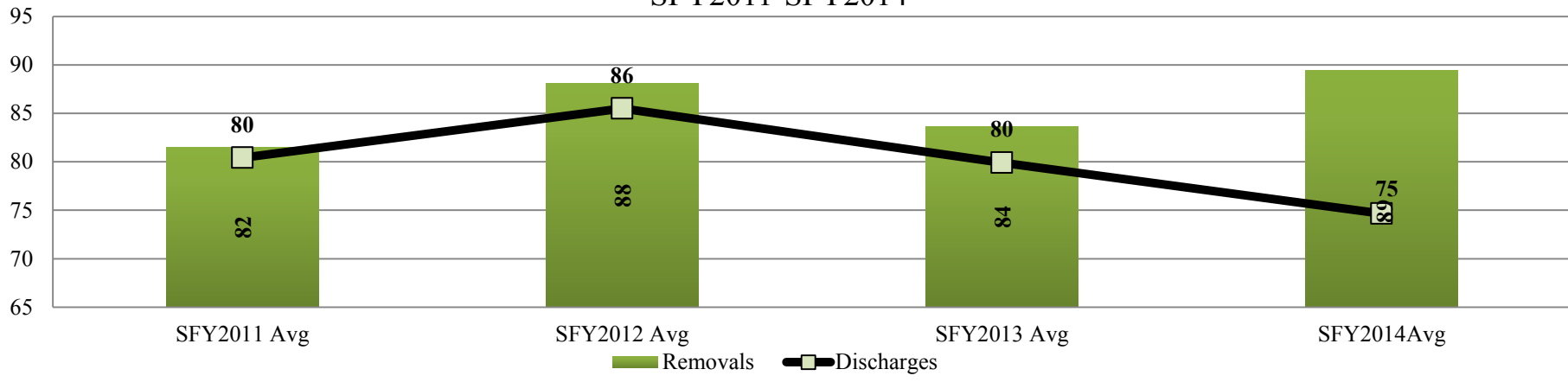
Kansas City Region Monthly Discharges SFY2012-SFY2014



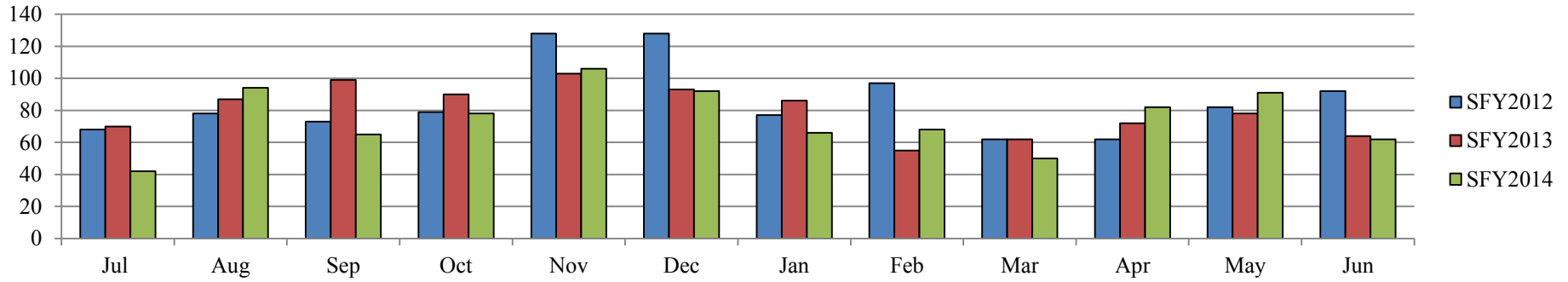
Kansas City Region Monthly Removals SFY2012-SFY2014



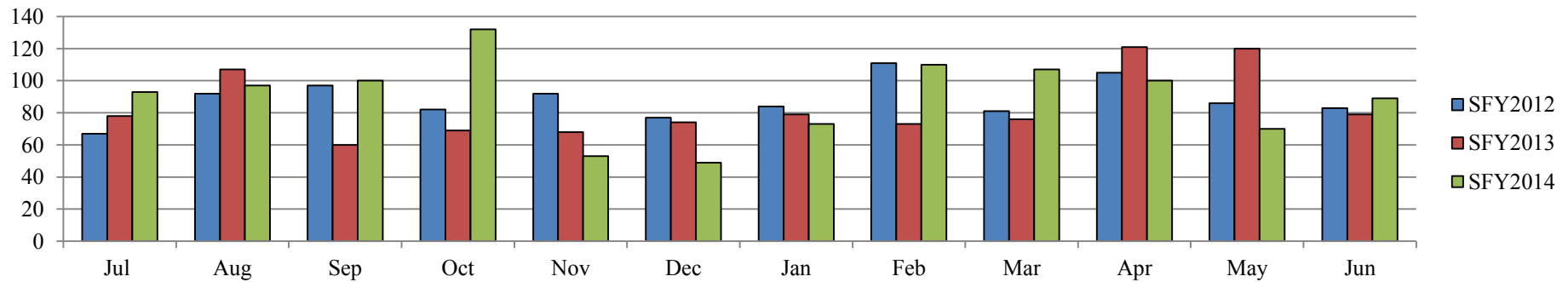
East Region Fiscal Year Average Removals and Discharges
SFY2011-SFY2014



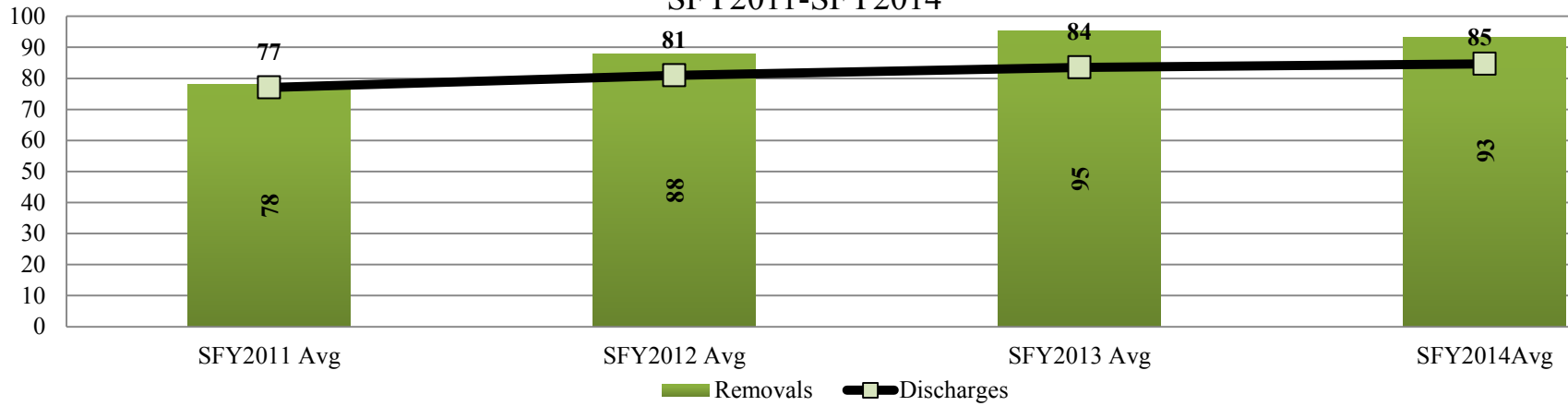
East Region Monthly Discharges
SFY2012-SFY2014



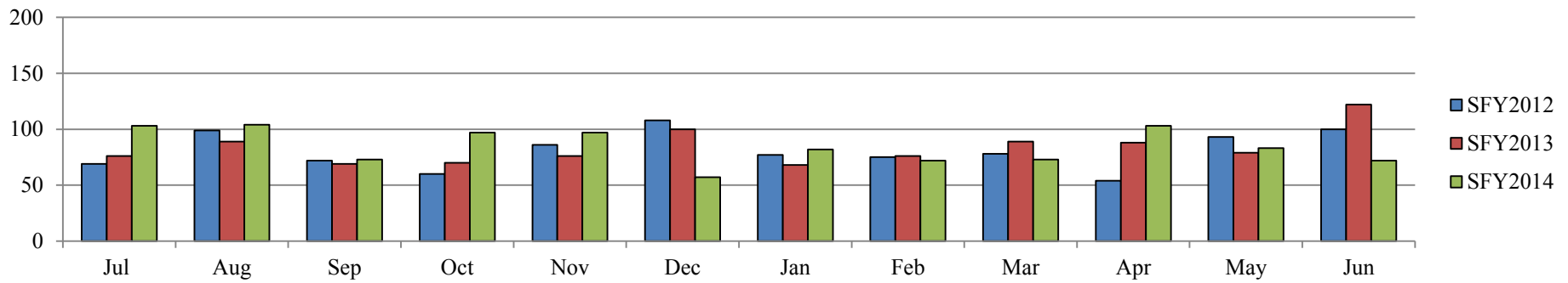
East Region Monthly Removals
SFY2012-SFY2014



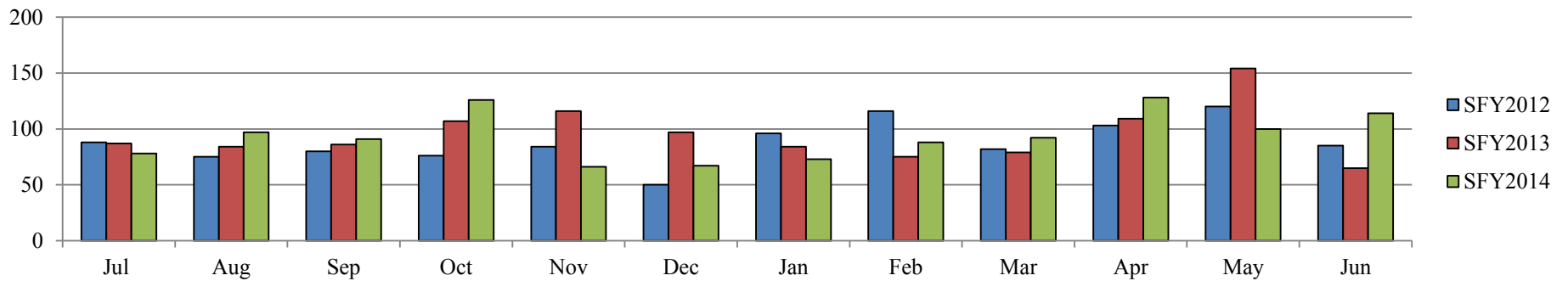
West Region Fiscal Year Average Removals and Discharges SFY2011-SFY2014



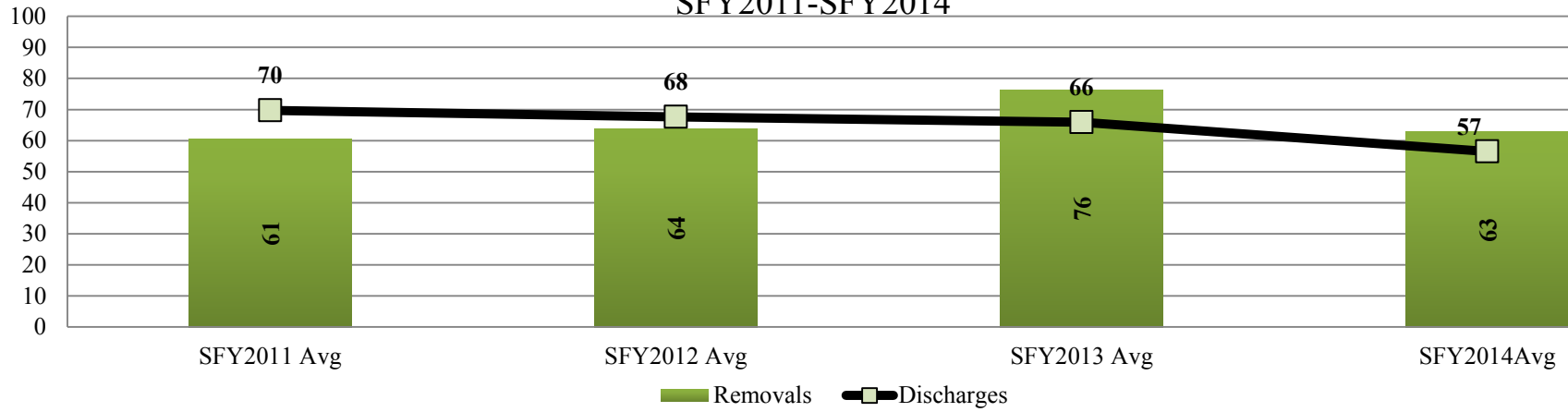
West Region Monthly Discharges SFY2012-SFY2014



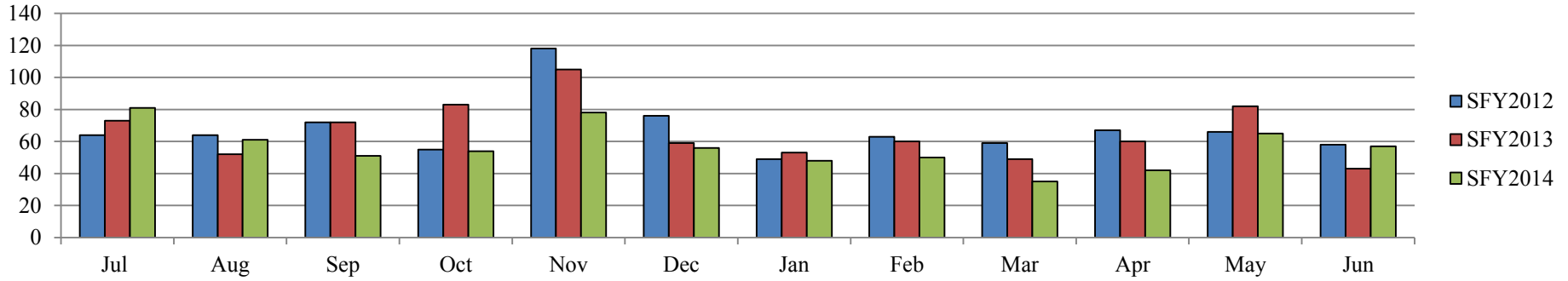
West Region Monthly Removals SFY2012-SFY2014



Wichita Region Fiscal Year Average Removals and Discharges SFY2011-SFY2014



Wichita Region Monthly Discharges SFY2012-SFY2014



Wichita Region Monthly Removals SFY2012-SFY2014

