

# FY 2011 Removals, Discharges and Out of Home Summary (FACTS)

7/11/2011

This report contains information on the number children removed into foster care in a given month, the number of children who discharged from foster care in a given month, and the number of children who are in a foster care placement outside of their home (OOH) on the last day of each month. Information is provided by SRS Region, Contract Region, and county.

By SRS Region	Type of Information	Jul	Aug	Sep	Oct	Nov	Dec	Jan	Feb	Mar	Apr	May	Jun	Fiscal year Total	Fiscal year Average
Kansas City Metro	Removals	86	76	77	58	61	78	53	46	70	74	77	55	811	68
Kansas City Metro	Discharges	49	66	53	72	76	65	52	42	66	45	65	63	714	60
Kansas City Metro	OOH Last Day of the Month	1043	1041	1057	1074	1084	1085	1094	1096	1096	1138	1156	1133		1,091
Northeast Region	Removals	76	82	67	51	58	63	64	55	62	81	83	63	805	67
Northeast Region	Discharges	46	50	74	46	95	79	50	76	77	54	74	59	780	65
Northeast Region	OOH Last Day of the Month	1258	1238	1252	1258	1227	1212	1226	1232	1228	1253	1250	1228		1,239
South Central-East	Removals	12	30	16	22	18	14	15	24	11	14	28	13	217	18
South Central-East	Discharges	12	18	18	19	34	22	23	12	20	28	22	14	242	20
South Central-East	OOH Last Day of the Month	343	355	353	357	355	343	331	342	333	332	329	314		341
South Central-West	Removals	12	37	33	24	26	24	33	7	15	23	30	17	281	23
South Central-West	Discharges	16	19	16	32	28	35	22	24	24	31	25	21	293	24
South Central-West	OOH Last Day of the Month	515	512	534	545	545	538	556	538	537	532	537	527		535
Southeast Region	Removals	30	37	28	26	28	15	27	28	44	43	45	26	377	31
Southeast Region	Discharges	47	29	30	37	39	38	31	30	24	30	26	41	402	34
Southeast Region	OOH Last Day of the Month	491	485	485	477	482	463	465	475	476	498	515	482		483
West Region	Removals	30	37	35	40	30	33	31	24	43	51	47	37	438	37
West Region	Discharges	23	41	21	31	46	43	26	40	28	29	39	54	421	35
West Region	OOH Last Day of the Month	579	555	567	573	582	563	553	556	573	610	607	594		576
Wichita Region	Removals	40	61	29	38	36	47	42	34	33	43	37	39	479	40
Wichita Region	Discharges	39	28	64	53	82	38	42	39	44	35	42	39	545	45
Wichita Region	OOH Last Day of the Month	996	1010	979	964	936	944	942	946	927	936	909	912		950
State	Removals	286	360	285	259	257	274	265	218	278	329	347	250	3408	284
State	Discharges	232	251	276	290	400	320	246	263	283	252	293	291	3397	283
State	OOH Last Day of the Month	5225	5196	5227	5248	5211	5148	5167	5185	5170	5299	5303	5190		5,214

## Data Sources:

**Removals-** from FACTS

**Discharges-** Discharges from FACTS

**OOH Last Day of the Month-** from FACTS

**By Contract Region**

Region Number	Type of Information	Jul	Aug	Sep	Oct	Nov	Dec	Jan	Feb	Mar	Apr	May	Jun	Fiscal year Total	Fiscal year Average
Region 1	Removals	42	67	44	48	46	29	42	52	55	57	73	39	594	50
Region 1	Discharges	59	47	48	56	73	60	54	42	44	58	48	55	644	54
Region 1	OOH Last Day of the Month	834	840	838	834	837	806	796	817	809	830	844	796		823
Region 2	Removals	86	76	77	58	61	78	53	46	70	74	77	55	811	68
Region 2	Discharges	49	66	53	72	76	65	52	42	66	45	65	63	714	60
Region 2	OOH Last Day of the Month	1043	1041	1057	1074	1084	1085	1094	1096	1096	1138	1156	1133		1,091
Region 3	Removals	76	82	67	51	58	63	64	55	62	81	83	63	805	67
Region 3	Discharges	46	50	74	46	95	79	50	76	77	54	74	59	780	65
Region 3	OOH Last Day of the Month	1258	1238	1252	1258	1227	1212	1226	1232	1228	1253	1250	1228		1,239
Region 4	Removals	42	74	68	64	56	57	64	31	58	74	77	54	719	60
Region 4	Discharges	39	60	37	63	74	78	48	64	52	60	64	75	714	60
Region 4	OOH Last Day of the Month	1094	1067	1101	1118	1127	1101	1109	1094	1110	1142	1144	1121		1,111
Region 5	Removals	40	61	29	38	36	47	42	34	33	43	37	39	479	40
Region 5	Discharges	39	28	64	53	82	38	42	39	44	35	42	39	545	45
Region 5	OOH Last Day of the Month	996	1010	979	964	936	944	942	946	927	936	909	912		950

**Data Sources:**

**Removals-** from FACTS

**Discharges-** Discharges from FACTS

**OOH Last Day of the Month-** from FACTS

Information By County grouped in Contract Regions

County	Type of Information	Jul	Aug	Sep	Oct	Nov	Dec	Jan	Feb	Mar	Apr	May	Jun	Fiscal year Total	Fiscal year Average
AL ALLEN	Removals	4	7	2	0	0	1	2	4	4	0	0	4	28	4
AL ALLEN	Discharges	9	2	8	1	1	4	1	4	2	2	3	3	40	3
AL ALLEN	OOH Last Day of the Month	69	67	70	66	65	64	60	61	60	61	54	54		63
AN ANDERSON	Removals	0	0	0	0	0	0	0	0	0	0	0	1	1	1
AN ANDERSON	Discharges	0	2	3	1	0	1	3	0	0	1	1	2	14	2
AN ANDERSON	OOH Last Day of the Month	12	15	11	11	11	10	10	8	8	8	8	5		10
BB BOURBON	Removals	0	3	4	3	4	0	4	1	13	3	3	2	40	4
BB BOURBON	Discharges	7	2	9	5	4	3	4	0	3	12	6	5	60	5
BB BOURBON	OOH Last Day of the Month	60	58	58	58	58	55	53	50	59	54	52	46		55
BU BUTLER	Removals	4	15	4	6	6	7	8	8	6	7	17	2	90	8
BU BUTLER	Discharges	4	4	15	13	11	10	9	3	9	8	5	4	95	8
BU BUTLER	OOH Last Day of the Month	131	136	133	125	123	112	110	120	120	125	130	126		124
CS CHASE	Removals	0	0	0	0	0	0	0	0	0	0	0	0	0	0
CS CHASE	Discharges	0	1	0	0	0	0	0	0	0	0	1	0	2	1
CS CHASE	OOH Last Day of the Month	1	1	1	1	1	1	1	1	1	1	1	0		1
CQ CHAUTAUQUA	Removals	0	0	0	0	0	0	0	0	0	0	0	2	2	2
CQ CHAUTAUQUA	Discharges	0	0	0	0	1	0	2	0	0	0	0	0	3	2
CQ CHAUTAUQUA	OOH Last Day of the Month	11	11	10	10	10	9	8	8	7	7	7	7		9
CK CHEROKEE	Removals	4	10	1	7	2	4	2	3	5	12	3	2	55	5
CK CHEROKEE	Discharges	5	1	2	11	5	6	8	2	2	2	1	4	49	4
CK CHEROKEE	OOH Last Day of the Month	36	45	43	45	43	40	41	43	48	53	54	50		45
CF COFFEY	Removals	0	1	1	0	1	0	0	5	0	0	3	0	11	2
CF COFFEY	Discharges	0	0	0	0	0	0	2	1	0	2	0	1	6	2
CF COFFEY	OOH Last Day of the Month	9	10	11	11	10	11	11	14	13	10	11	10		11
CL COWLEY	Removals	2	5	9	0	0	4	3	4	2	2	0	5	36	4
CL COWLEY	Discharges	3	10	1	1	5	3	7	1	5	9	7	5	57	5
CL COWLEY	OOH Last Day of the Month	65	69	71	71	67	68	65	64	60	58	53	55		64
CR CRAWFORD	Removals	10	6	5	4	7	3	4	2	3	8	16	7	75	6
CR CRAWFORD	Discharges	9	10	6	3	12	11	6	13	8	3	4	8	93	8
CR CRAWFORD	OOH Last Day of the Month	115	104	103	99	104	100	97	94	82	92	105	105		100
EK ELK	Removals	0	1	0	0	1	0	0	0	0	1	0	1	4	1
EK ELK	Discharges	0	0	0	0	0	0	0	1	0	0	0	0	1	1
EK ELK	OOH Last Day of the Month	2	3	3	3	4	4	4	4	3	4	4	5		4
GW GREENWOOD	Removals	2	2	1	0	0	1	0	1	1	0	1	2	11	1
GW GREENWOOD	Discharges	0	0	1	3	0	0	2	0	2	2	0	1	11	2
GW GREENWOOD	OOH Last Day of the Month	18	19	20	20	18	19	17	13	14	12	13	15		17
LB LABETTE	Removals	8	3	9	4	7	6	10	6	5	7	9	3	77	6
LB LABETTE	Discharges	8	6	2	7	8	1	3	3	4	5	6	14	67	6
LB LABETTE	OOH Last Day of the Month	74	72	75	71	72	70	78	83	79	82	86	74		76
LN LINN	Removals	0	1	3	1	1	0	0	0	4	4	1	4	19	2
LN LINN	Discharges	6	0	0	7	4	1	0	3	0	1	2	2	26	3
LN LINN	OOH Last Day of the Month	14	15	17	11	9	8	8	7	12	15	15	15		12
LY LYON	Removals	4	5	1	11	8	1	2	4	1	4	6	0	47	4
LY LYON	Discharges	3	3	0	0	13	6	0	6	2	4	8	1	46	5
LY LYON	OOH Last Day of the Month	87	86	84	92	97	96	91	91	87	88	87	76		89

MN MARION	Removals	0	0	0	3	1	0	2	2	0	0	0	1	9	2
MN MARION	Discharges	1	0	0	1	3	2	1	0	2	0	1	2	13	2
MN MARION	OOH Last Day of the Month	9	9	9	11	12	9	11	12	13	12	10	9		11
MG MONTGOMERY	Removals	4	6	2	0	2	1	5	1	4	6	3	0	34	3
MG MONTGOMERY	Discharges	3	1	0	0	3	4	6	5	1	1	2	0	26	3
MG MONTGOMERY	OOH Last Day of the Month	76	78	75	76	78	76	83	78	74	77	77	71		77
MR MORRIS	Removals	0	1	0	2	1	1	0	0	1	0	1	0	7	1
MR MORRIS	Discharges	1	0	1	1	1	1	0	0	0	3	0	0	8	1
MR MORRIS	OOH Last Day of the Month	10	11	11	13	13	14	13	15	15	15	13	11		13
NO NEOSHO	Removals	0	0	2	3	2	0	0	7	5	1	5	3	28	4
NO NEOSHO	Discharges	0	5	0	2	2	4	0	0	2	1	1	3	20	3
NO NEOSHO	OOH Last Day of the Month	29	25	27	30	30	28	26	38	42	43	47	46		34
WL WILSON	Removals	0	0	0	4	0	0	0	3	0	1	0	0	8	3
WL WILSON	Discharges	0	0	0	0	0	3	0	0	2	0	0	0	5	3
WL WILSON	OOH Last Day of the Month	4	4	4	8	6	6	3	6	4	5	5	4		5
WO WOODSON	Removals	0	1	0	0	3	0	0	1	1	1	5	0	12	2
WO WOODSON	Discharges	0	0	0	0	0	0	0	0	0	2	0	0	2	2
WO WOODSON	OOH Last Day of the Month	2	2	2	2	6	6	6	7	8	8	12	12		6
DG DOUGLAS	Removals	7	2	7	5	5	1	5	1	0	4	2	1	40	4
DG DOUGLAS	Discharges	1	4	1	2	2	2	5	2	3	1	6	3	32	3
DG DOUGLAS	OOH Last Day of the Month	67	64	70	72	78	76	74	74	70	74	68	66		71
FR FRANKLIN	Removals	8	0	2	1	1	0	5	6	6	8	0	0	37	5
FR FRANKLIN	Discharges	5	2	7	1	0	0	4	3	1	2	0	6	31	3
FR FRANKLIN	OOH Last Day of the Month	49	48	44	45	46	45	42	45	50	54	54	48		48
JO JOHNSON	Removals	35	38	35	26	24	47	30	24	45	29	33	20	386	32
JO JOHNSON	Discharges	20	27	18	19	29	33	22	15	23	26	20	14	266	22
JO JOHNSON	OOH Last Day of the Month	377	386	407	420	429	443	462	466	479	501	516	512		450
LV LEAVENWORTH	Removals	14	3	2	7	0	5	3	5	6	12	12	7	76	7
LV LEAVENWORTH	Discharges	6	10	7	6	10	6	0	6	2	5	6	14	78	7
LV LEAVENWORTH	OOH Last Day of the Month	63	62	51	57	54	52	56	61	63	69	74	64		61
MI MIAMI	Removals	1	1	3	11	3	0	3	0	2	1	1	3	29	3
MI MIAMI	Discharges	2	5	1	1	8	0	3	3	0	2	6	2	33	3
MI MIAMI	OOH Last Day of the Month	31	28	28	37	35	34	35	30	35	30	27	29		32
WY WYANDOTTE	Removals	21	32	28	8	28	25	7	10	11	20	29	24	243	20
WY WYANDOTTE	Discharges	15	18	19	43	27	24	18	13	37	9	27	24	274	23
WY WYANDOTTE	OOH Last Day of the Month	456	453	457	443	442	435	425	420	399	410	417	414		431
AT ATCHISON	Removals	1	2	1	2	1	2	1	0	3	1	5	2	21	2
AT ATCHISON	Discharges	0	1	3	2	3	1	1	2	2	5	0	0	20	2
AT ATCHISON	OOH Last Day of the Month	34	31	30	33	31	33	32	30	33	29	33	35		32
BR BROWN	Removals	1	6	1	4	3	5	0	1	3	5	4	3	36	3
BR BROWN	Discharges	0	1	1	0	0	5	0	3	1	2	4	0	17	2
BR BROWN	OOH Last Day of the Month	24	27	28	32	33	38	36	37	39	44	44	45		36
CY CLAY	Removals	0	0	0	0	0	0	0	0	0	2	2	0	4	2
CY CLAY	Discharges	0	0	2	1	1	0	0	0	1	0	1	1	7	1
CY CLAY	OOH Last Day of the Month	9	9	7	7	7	7	7	7	7	10	12	9		8
CD CLOUD	Removals	3	0	1	0	1	2	3	5	2	0	0	1	18	2
CD CLOUD	Discharges	3	0	0	2	0	1	0	0	4	2	0	0	12	2
CD CLOUD	OOH Last Day of the Month	12	12	14	12	13	15	17	22	20	17	16	17		16

DK DICKINSON	Removals	2	0	0	4	1	4	0	3	6	0	1	0	21	3
DK DICKINSON	Discharges	1	2	6	0	2	3	0	1	3	1	0	3	22	2
DK DICKINSON	OOH Last Day of the Month	31	28	25	29	28	26	26	24	30	28	29	24		27
DP DONIPHAN	Removals	0	1	0	0	2	0	2	0	1	2	0	0	8	2
DP DONIPHAN	Discharges	0	0	0	0	0	0	1	0	1	2	0	1	5	1
DP DONIPHAN	OOH Last Day of the Month	8	9	9	9	10	10	10	10	10	12	12	11		10
EW ELLSWORTH	Removals	2	0	0	0	0	0	0	0	0	0	0	0	2	2
EW ELLSWORTH	Discharges	1	2	0	0	0	1	0	0	1	0	0	0	5	1
EW ELLSWORTH	OOH Last Day of the Month	8	8	6	6	6	6	6	5	5	5	5	5		6
GE GEARY	Removals	5	5	4	9	3	4	7	1	4	5	6	0	53	5
GE GEARY	Discharges	8	5	6	5	5	2	2	7	3	3	2	0	48	4
GE GEARY	OOH Last Day of the Month	33	29	27	29	28	29	34	30	33	33	40	39		32
JA JACKSON	Removals	1	2	0	4	11	1	0	2	1	3	1	1	27	3
JA JACKSON	Discharges	1	0	0	1	0	1	1	3	0	2	0	3	12	2
JA JACKSON	OOH Last Day of the Month	15	11	14	18	29	29	27	27	25	24	25	19		22
JF JEFFERSON	Removals	0	0	0	1	0	1	3	0	3	1	0	3	12	2
JF JEFFERSON	Discharges	0	1	0	0	1	3	0	0	0	0	0	1	6	2
JF JEFFERSON	OOH Last Day of the Month	29	26	26	27	27	28	30	29	31	30	28	28		28
JW JEWELL	Removals	0	1	0	0	0	0	0	0	0	0	0	0	1	1
JW JEWELL	Discharges	0	0	0	0	0	0	0	0	1	0	0	0	1	1
JW JEWELL	OOH Last Day of the Month	3	3	3	3	2	2	2	2	2	2	2	2		2
LC LINCOLN	Removals	0	0	1	0	0	1	2	0	0	0	2	0	6	2
LC LINCOLN	Discharges	0	0	0	0	4	0	0	0	0	0	1	1	6	2
LC LINCOLN	OOH Last Day of the Month	8	8	9	5	5	6	8	8	8	6	8	8		7
MS MARSHALL	Removals	1	2	0	4	0	2	1	0	0	0	1	3	14	2
MS MARSHALL	Discharges	2	0	1	0	0	1	1	0	1	0	4	0	10	2
MS MARSHALL	OOH Last Day of the Month	11	12	11	16	16	17	15	15	15	14	14	16		14
MC MITCHELL	Removals	0	3	10	0	0	0	7	0	0	0	0	0	20	7
MC MITCHELL	Discharges	1	0	4	4	1	3	1	0	3	3	4	1	25	3
MC MITCHELL	OOH Last Day of the Month	19	18	27	27	26	25	30	30	24	24	20	18		24
NM NEMAHA	Removals	1	0	1	0	0	3	0	4	3	0	0	1	13	2
NM NEMAHA	Discharges	0	2	0	0	0	2	0	2	1	0	3	1	11	2
NM NEMAHA	OOH Last Day of the Month	11	10	11	11	8	10	9	9	12	12	13	13		11
OS OSAGE	Removals	0	1	0	2	4	1	0	0	1	0	2	1	12	2
OS OSAGE	Discharges	0	1	1	1	0	0	1	5	0	0	1	1	11	2
OS OSAGE	OOH Last Day of the Month	10	11	10	11	15	14	8	8	9	9	9	10		10
OT OTTAWA	Removals	5	4	1	0	0	0	0	0	0	0	3	0	13	3
OT OTTAWA	Discharges	1	1	0	2	0	0	0	0	1	0	0	1	6	1
OT OTTAWA	OOH Last Day of the Month	8	10	10	10	11	11	11	11	9	9	11	12		10
PT POTTAWATOMIE	Removals	1	0	2	2	2	0	0	0	0	0	2	0	9	2
PT POTTAWATOMIE	Discharges	0	0	0	0	0	0	0	0	1	0	2	1	4	1
PT POTTAWATOMIE	OOH Last Day of the Month	11	10	10	9	11	11	11	11	11	11	12	6		10
RP REPUBLIC	Removals	0	0	0	0	0	0	2	1	0	0	0	1	4	1
RP REPUBLIC	Discharges	0	1	0	0	1	0	0	2	2	0	0	0	6	2
RP REPUBLIC	OOH Last Day of the Month	9	9	7	7	7	7	9	9	8	7	8	8		8
RL RILEY	Removals	4	3	3	4	6	5	3	6	0	5	4	3	46	4
RL RILEY	Discharges	10	5	5	4	4	2	3	1	6	4	4	2	50	4
RL RILEY	OOH Last Day of the Month	51	52	53	53	56	58	59	63	59	59	62	56		57

SA SALINE	Removals	6	10	9	2	3	9	2	7	3	12	8	3	74	6
SA SALINE	Discharges	5	5	12	7	7	3	9	4	12	2	7	1	74	6
SA SALINE	OOH Last Day of the Month	101	105	112	103	97	103	96	100	95	104	104	101		102
SN SHAWNEE	Removals	43	42	33	13	21	22	31	25	32	45	42	41	390	33
SN SHAWNEE	Discharges	12	19	33	17	66	48	27	46	32	28	40	41	409	34
SN SHAWNEE	OOH Last Day of the Month	800	787	790	788	748	715	732	736	735	756	737	740		755
WB WABAUNSEE	Removals	0	0	0	0	0	1	0	0	0	0	0	0	1	1
WB WABAUNSEE	Discharges	1	0	0	0	0	2	2	0	0	0	0	0	5	2
WB WABAUNSEE	OOH Last Day of the Month	5	5	5	5	5	4	4	2	2	2	2	2		4
WS WASHINGTON	Removals	0	0	0	0	0	0	0	0	0	0	0	0	0	0
WS WASHINGTON	Discharges	0	4	0	0	0	1	1	0	1	0	1	0	8	2
WS WASHINGTON	OOH Last Day of the Month	8	8	8	8	8	8	7	7	6	6	4	4		7
BA BARBER	Removals	0	0	0	3	0	1	0	2	0	0	0	1	7	2
BA BARBER	Discharges	0	0	0	0	0	1	2	0	0	0	2	0	5	2
BA BARBER	OOH Last Day of the Month	12	12	12	12	15	15	15	17	17	17	15	16		15
BT BARTON	Removals	5	5	2	7	11	3	8	3	5	14	12	10	85	7
BT BARTON	Discharges	2	12	4	3	9	3	1	8	2	10	11	7	72	6
BT BARTON	OOH Last Day of the Month	139	124	126	133	140	135	139	138	136	141	141	143		136
CN CHEYENNE	Removals	0	0	0	0	0	0	0	0	0	0	1	0	1	1
CN CHEYENNE	Discharges	0	0	0	0	0	0	1	0	0	0	0	0	1	1
CN CHEYENNE	OOH Last Day of the Month	4	4	4	4	4	4	3	3	3	3	4	4		4
CA CLARK	Removals	0	1	0	0	0	0	0	0	0	0	0	0	1	1
CA CLARK	Discharges	0	0	0	0	0	0	0	2	0	0	0	0	2	2
CA CLARK	OOH Last Day of the Month	2	3	3	3	3	3	3	1	1	1	1	1		2
CM COMANCHE	Removals	0	0	0	0	0	0	0	0	0	0	0	0	0	0
CM COMANCHE	Discharges	0	0	0	1	2	0	0	1	0	0	0	0	4	1
CM COMANCHE	OOH Last Day of the Month	6	3	2	2	2	2	2	2	2	2	2	2		2
DC DECATUR	Removals	1	0	1	0	0	0	0	0	0	0	0	3	5	2
DC DECATUR	Discharges	0	0	0	0	0	0	0	0	0	0	1	0	1	1
DC DECATUR	OOH Last Day of the Month	5	5	5	5	4	4	4	4	4	4	4	6		5
ED EDWARDS	Removals	1	0	0	0	0	0	0	0	1	0	0	1	3	1
ED EDWARDS	Discharges	0	0	0	0	1	1	0	0	0	1	0	0	3	1
ED EDWARDS	OOH Last Day of the Month	2	2	2	2	1	1	1	1	2	1	1	2		2
EL ELLIS	Removals	0	3	7	9	5	4	0	3	2	12	8	1	54	5
EL ELLIS	Discharges	1	1	3	8	6	9	2	1	2	2	4	6	45	4
EL ELLIS	OOH Last Day of the Month	35	36	43	46	46	43	40	40	36	48	52	50		43
FI FINNEY	Removals	5	10	9	7	5	6	2	5	6	2	3	7	67	6
FI FINNEY	Discharges	2	10	4	2	4	5	4	12	9	5	2	19	78	7
FI FINNEY	OOH Last Day of the Month	93	92	97	102	101	104	98	101	102	103	95	87		98
FO FORD	Removals	0	6	3	1	0	6	2	4	13	4	1	3	43	4
FO FORD	Discharges	4	1	0	6	4	4	3	8	6	3	3	6	48	4
FO FORD	OOH Last Day of the Month	50	53	53	47	45	49	46	42	53	56	52	50		50
GO GOVE	Removals	0	0	0	3	0	0	0	0	0	0	0	1	4	2
GO GOVE	Discharges	0	0	0	0	0	0	0	0	1	0	3	3	7	2
GO GOVE	OOH Last Day of the Month	4	4	4	7	7	7	4	4	3	3	3	1		4
GH GRAHAM	Removals	0	0	0	0	0	0	0	0	0	0	0	0	0	0
GH GRAHAM	Discharges	0	0	0	1	0	0	0	0	0	0	0	0	1	1
GH GRAHAM	OOH Last Day of the Month	1	1	1	1	1	1	1	1	1	1	3	3		1

GT GRANT	Removals	0	4	0	0	1	0	0	0	0	0	3	0	8	3
GT GRANT	Discharges	0	0	0	0	1	0	1	0	1	0	0	0	3	1
GT GRANT	OOH Last Day of the Month	2	5	5	5	6	6	6	6	5	5	6	6		5
GY GRAY	Removals	0	0	0	0	0	0	0	0	0	0	0	0	0	0
GY GRAY	Discharges	0	0	0	0	0	0	0	0	3	0	0	0	3	3
GY GRAY	OOH Last Day of the Month	4	4	4	4	4	1	1	1	1	1	1	1		2
GL GREELEY	Removals	1	0	0	0	0	0	0	0	0	0	0	0	1	1
GL GREELEY	Discharges	0	2	0	1	0	0	0	0	0	0	0	1	4	1
GL GREELEY	OOH Last Day of the Month	3	3	3	3	3	2	2	2	2	2	2	2		2
HM HAMILTON	Removals	0	0	0	1	0	0	0	0	0	0	0	0	1	1
HM HAMILTON	Discharges	0	0	0	0	0	0	0	0	0	0	0	0	0	0
HM HAMILTON	OOH Last Day of the Month	3	3	3	4	4	4	1	1	1	1	1	1		2
HP HARPER	Removals	1	3	0	0	0	0	0	0	0	0	0	1	5	2
HP HARPER	Discharges	2	0	0	0	2	0	3	1	1	2	2	1	14	2
HP HARPER	OOH Last Day of the Month	17	19	20	20	20	15	15	13	10	9	9	8		15
HV HARVEY	Removals	2	1	1	9	1	1	0	2	5	1	4	0	27	3
HV HARVEY	Discharges	6	8	0	8	3	7	2	2	2	5	3	5	51	5
HV HARVEY	OOH Last Day of the Month	85	77	76	80	80	76	74	73	78	74	75	69		76
HS HASKELL	Removals	0	0	0	0	0	0	0	0	0	0	0	0	0	0
HS HASKELL	Discharges	0	0	0	0	1	1	0	0	0	0	0	0	2	1
HS HASKELL	OOH Last Day of the Month	5	5	5	5	4	3	3	3	3	3	3	3		4
HG HODGEMAN	Removals	0	0	0	0	0	0	0	0	0	0	0	0	0	0
HG HODGEMAN	Discharges	0	0	0	0	0	0	0	0	0	0	0	0	0	0
HG HODGEMAN	OOH Last Day of the Month	1	1	1	1	1	1	1	1	1	1	1	1		1
KE KEARNEY	Removals	0	0	3	0	0	0	4	0	1	5	1	0	14	3
KE KEARNEY	Discharges	0	0	0	0	4	0	0	0	0	1	0	1	6	2
KE KEARNEY	OOH Last Day of the Month	0	0	3	3	3	3	7	7	8	12	13	12		7
KM KINGMAN	Removals	0	3	1	0	0	2	1	0	0	0	0	1	8	2
KM KINGMAN	Discharges	0	0	2	0	1	1	7	0	1	0	0	0	12	2
KM KINGMAN	OOH Last Day of the Month	18	16	17	17	16	19	20	19	19	19	14	15		17
KW KIOWA	Removals	0	0	0	0	0	0	0	1	0	0	1	0	2	1
KW KIOWA	Discharges	0	0	0	0	0	0	0	0	0	0	0	1	1	1
KW KIOWA	OOH Last Day of the Month	0	0	0	0	0	0	0	1	1	1	2	0		1
LE LANE	Removals	0	0	0	0	0	0	0	0	5	0	0	0	5	5
LE LANE	Discharges	0	1	0	0	0	0	0	0	0	0	0	0	1	1
LE LANE	OOH Last Day of the Month	4	4	4	4	4	4	4	4	9	9	9	9		6
LG LOGAN	Removals	0	0	0	0	1	0	0	0	0	0	0	0	1	1
LG LOGAN	Discharges	0	0	2	1	0	0	0	0	0	0	2	0	5	2
LG LOGAN	OOH Last Day of the Month	6	6	4	4	5	4	4	4	4	4	2	2		4
MP MCPHERSON	Removals	1	3	0	0	1	0	0	2	0	1	0	1	9	2
MP MCPHERSON	Discharges	1	4	1	2	5	0	0	0	2	3	0	0	18	3
MP MCPHERSON	OOH Last Day of the Month	24	23	23	23	20	20	19	22	19	19	19	19		21
ME MEADE	Removals	0	1	0	0	0	0	0	0	0	2	0	0	3	2
ME MEADE	Discharges	0	0	0	0	1	0	0	0	1	0	0	0	2	1
ME MEADE	OOH Last Day of the Month	4	5	5	5	4	4	4	4	3	5	5	5		4
MT MORTON	Removals	0	0	0	0	0	3	2	0	0	0	0	0	5	3
MT MORTON	Discharges	0	3	1	0	0	0	0	0	0	1	0	3	8	2
MT MORTON	OOH Last Day of the Month	8	5	5	4	4	4	5	6	6	8	8	5		6

NS NESS	Removals	0	0	0	0	0	0	0	0	0	0	0	0	0	0
NS NESS	Discharges	0	0	0	0	0	3	0	0	0	0	0	0	3	3
NS NESS	OOH Last Day of the Month	3	2	2	2	2	0	0	0	0	0	0	0		2
NT NORTON	Removals	0	0	0	0	0	0	0	0	3	0	0	0	3	3
NT NORTON	Discharges	0	0	0	0	0	0	0	3	0	0	3	0	6	3
NT NORTON	OOH Last Day of the Month	6	3	3	3	3	3	3	3	6	6	3	3		4
OB OSBORNE	Removals	0	0	1	0	0	1	0	0	0	0	0	0	2	1
OB OSBORNE	Discharges	0	1	0	0	0	0	0	0	0	0	0	0	1	1
OB OSBORNE	OOH Last Day of the Month	3	3	4	3	3	4	4	4	4	4	3	3		4
PN PAWNEE	Removals	5	0	2	5	2	1	3	2	1	0	1	0	22	2
PN PAWNEE	Discharges	0	2	0	2	5	1	1	1	1	2	3	0	18	2
PN PAWNEE	OOH Last Day of the Month	34	30	32	35	36	37	35	37	38	36	36	36		35
PL PHILLIPS	Removals	0	0	3	0	1	0	2	1	0	0	0	0	7	2
PL PHILLIPS	Discharges	0	0	0	0	0	1	0	0	0	1	0	1	3	1
PL PHILLIPS	OOH Last Day of the Month	2	2	5	5	6	5	6	7	7	7	7	6		5
PR PRATT	Removals	0	5	1	3	0	0	1	1	0	3	3	4	21	3
PR PRATT	Discharges	3	0	1	0	0	0	5	0	0	0	1	0	10	3
PR PRATT	OOH Last Day of the Month	18	23	19	21	20	20	21	21	22	24	25	28		22
RA RAWLINS	Removals	0	0	0	0	0	0	1	0	0	0	0	0	1	1
RA RAWLINS	Discharges	0	0	0	0	1	0	0	0	0	0	0	0	1	1
RA RAWLINS	OOH Last Day of the Month	1	1	1	1	1	1	1	2	2	2	2	2		1
RN RENO	Removals	6	21	26	12	7	10	10	3	9	15	16	4	139	12
RN RENO	Discharges	6	3	5	17	10	7	9	7	10	9	9	3	95	8
RN RENO	OOH Last Day of the Month	200	214	235	242	238	239	239	231	234	238	257	255		235
RC RICE	Removals	1	4	2	0	0	7	10	0	0	0	3	1	28	4
RC RICE	Discharges	0	3	2	3	0	1	0	4	0	0	3	0	16	3
RC RICE	OOH Last Day of the Month	23	21	20	18	18	23	32	32	34	32	32	32		26
RO ROOKS	Removals	3	0	0	0	0	0	0	0	0	0	0	0	3	3
RO ROOKS	Discharges	3	0	0	0	1	0	0	0	0	0	0	1	5	2
RO ROOKS	OOH Last Day of the Month	2	2	2	2	2	1	1	1	1	1	1	0		1
RH RUSH	Removals	0	0	0	0	0	0	0	0	1	0	0	0	1	1
RH RUSH	Discharges	0	1	0	0	1	1	0	0	0	0	0	0	3	1
RH RUSH	OOH Last Day of the Month	5	4	3	4	3	2	2	2	3	3	3	3		3
RS RUSSELL	Removals	0	1	0	0	1	1	0	0	1	1	0	3	8	1
RS RUSSELL	Discharges	2	2	0	0	0	2	1	0	0	0	0	2	9	2
RS RUSSELL	OOH Last Day of the Month	4	5	5	5	6	4	3	3	3	4	4	7		4
SC SCOTT	Removals	2	0	0	0	0	0	0	0	2	0	3	1	8	2
SC SCOTT	Discharges	0	0	2	1	0	2	2	0	0	0	0	0	7	2
SC SCOTT	OOH Last Day of the Month	11	11	9	6	6	6	6	6	8	8	11	12		8
SW SEWARD	Removals	1	1	3	1	0	7	4	2	1	4	4	1	29	3
SW SEWARD	Discharges	4	2	3	3	4	6	1	3	1	3	4	2	36	3
SW SEWARD	OOH Last Day of the Month	53	51	50	43	43	39	41	41	41	45	43	41		44
SD SHERIDAN	Removals	0	0	0	0	0	0	0	0	0	0	0	0	0	0
SD SHERIDAN	Discharges	0	0	0	0	0	0	1	0	0	0	0	0	1	1
SD SHERIDAN	OOH Last Day of the Month	3	3	3	3	3	3	2	2	2	2	2	2		3
SH SHERMAN	Removals	0	0	0	0	0	0	0	0	0	0	0	0	0	0
SH SHERMAN	Discharges	1	0	0	0	0	0	0	1	1	0	0	1	4	1
SH SHERMAN	OOH Last Day of the Month	7	7	7	7	7	7	6	5	5	5	4	3		6



SM SMITH	Removals	0	0	0	0	1	0	0	0	0	0	0	0	1	1
SM SMITH	Discharges	0	0	1	0	0	0	0	0	0	0	0	0	1	1
SM SMITH	OOH Last Day of the Month	5	4	4	4	5	5	5	5	5	5	5	5		5
SF STAFFORD	Removals	0	0	0	0	2	0	0	0	0	1	0	0	3	2
SF STAFFORD	Discharges	1	0	0	0	0	0	0	0	0	0	0	0	1	1
SF STAFFORD	OOH Last Day of the Month	4	4	4	4	6	6	6	6	5	6	6	6		5
ST STANTON	Removals	0	0	0	0	0	0	0	0	0	0	0	0	1	1
ST STANTON	Discharges	0	0	0	1	0	0	0	0	0	0	0	0	1	1
ST STANTON	OOH Last Day of the Month	3	2	2	2	2	2	2	2	2	2	2	3		2
SV STEVENS	Removals	0	0	0	0	0	0	0	0	0	0	0	0	0	0
SV STEVENS	Discharges	0	0	0	0	1	0	0	0	0	0	0	0	1	1
SV STEVENS	OOH Last Day of the Month	1	1	1	1	1	0	0	0	0	0	0	0		1
SU SUMNER	Removals	1	2	3	3	17	4	12	0	1	6	7	9	65	6
SU SUMNER	Discharges	1	1	6	2	7	19	1	10	8	12	8	12	87	7
SU SUMNER	OOH Last Day of the Month	148	142	143	145	153	146	157	148	143	141	131	129		144
TH THOMAS	Removals	3	0	0	0	0	0	2	0	0	3	5	0	13	3
TH THOMAS	Discharges	0	2	0	0	0	2	0	0	0	0	0	0	4	2
TH THOMAS	OOH Last Day of the Month	8	6	6	6	6	4	5	5	5	8	13	14		7
TR TREGO	Removals	0	0	0	0	0	0	0	0	0	0	1	0	1	1
TR TREGO	Discharges	0	1	0	0	0	0	0	0	0	0	0	0	1	1
TR TREGO	OOH Last Day of the Month	2	1	1	1	1	1	1	1	1	1	2	2		1
WA WALLACE	Removals	0	0	0	0	0	0	0	0	0	0	0	0	0	0
WA WALLACE	Discharges	0	0	0	0	0	1	0	0	0	0	0	0	1	1
WA WALLACE	OOH Last Day of the Month	1	0	0	0	0	0	0	0	0	0	0	0		1
WH WICHITA	Removals	3	0	0	0	0	0	0	0	1	0	0	0	4	2
WH WICHITA	Discharges	0	0	0	1	0	0	1	0	0	0	0	0	2	1
WH WICHITA	OOH Last Day of the Month	10	10	10	9	9	9	9	9	9	9	9	6		9
SG SEDGWICK	Removals	40	61	29	38	36	47	42	34	33	43	37	39	479	40
SG SEDGWICK	Discharges	39	28	64	53	82	38	42	39	44	35	42	39	545	45
SG SEDGWICK	OOH Last Day of the Month	996	1010	979	964	936	944	942	946	927	936	909	912		950

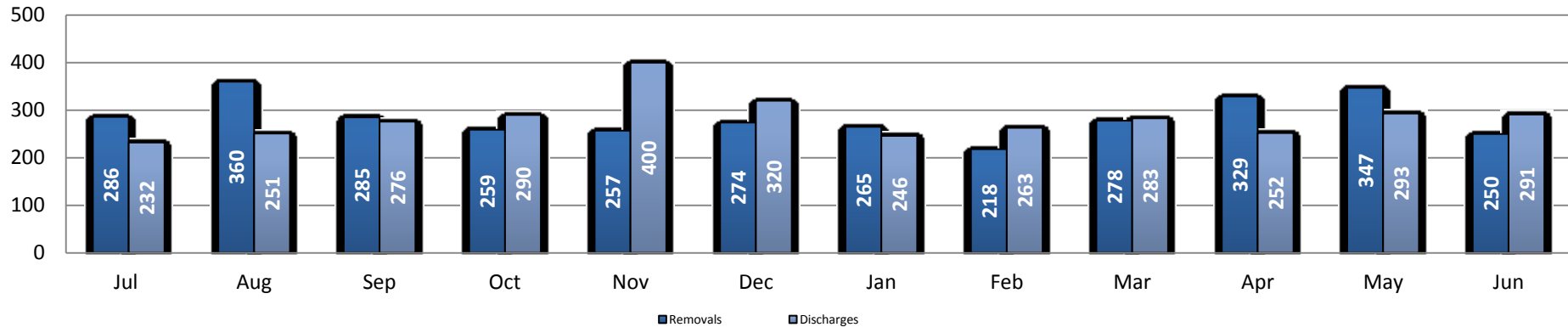
**Data Sources:**

**Removals-** from FACTS

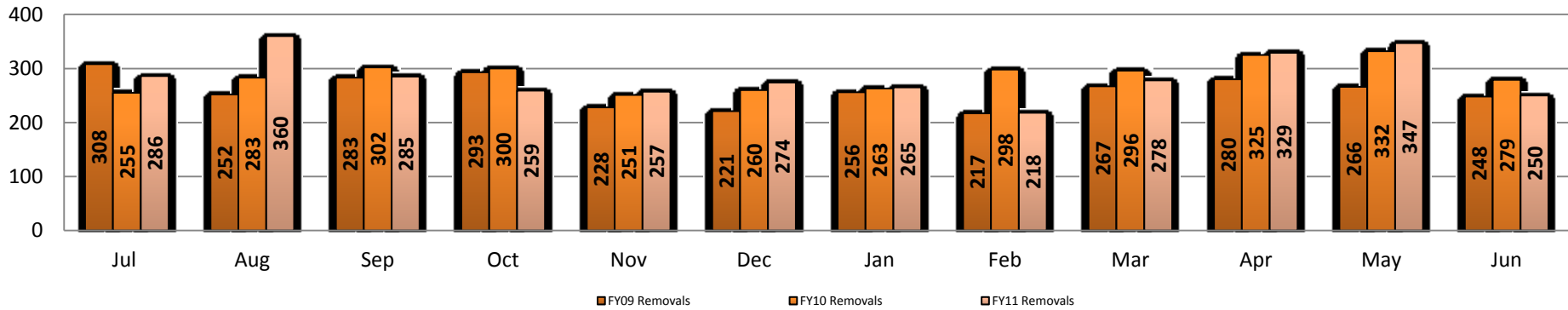
**Discharges-** Discharges from FACTS

**OOH Last Day of the Month-** from FACTS

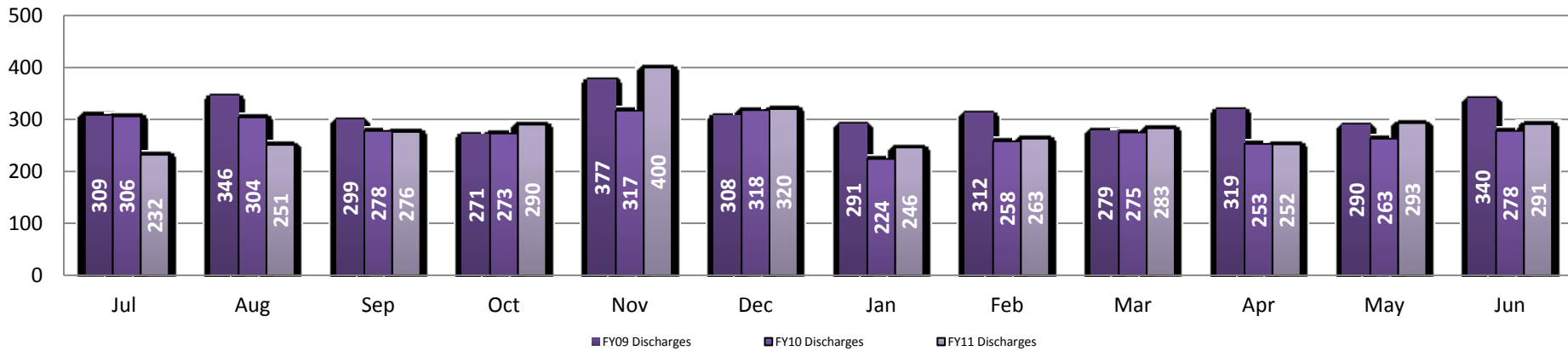
## Statewide FY11 Removals and Discharges



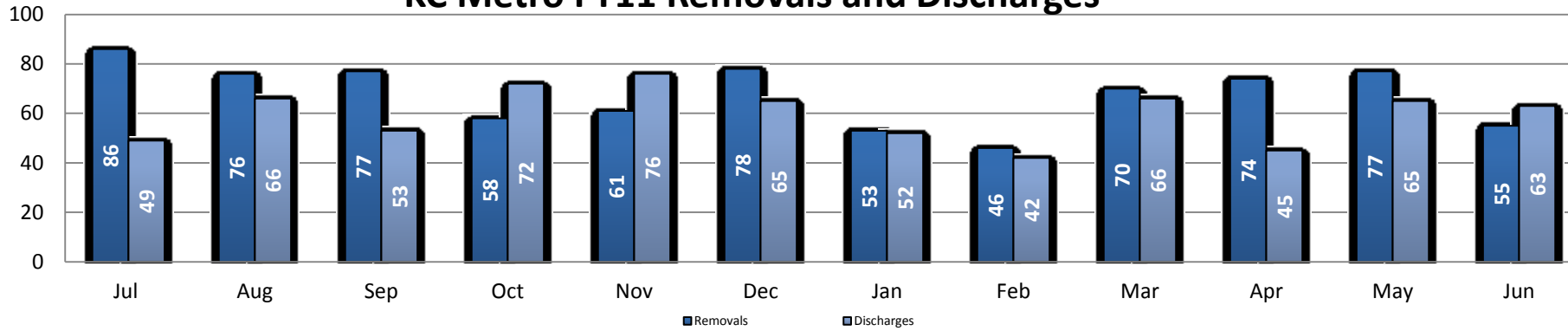
## Statewide Removals FY09 -FY11 Comparison



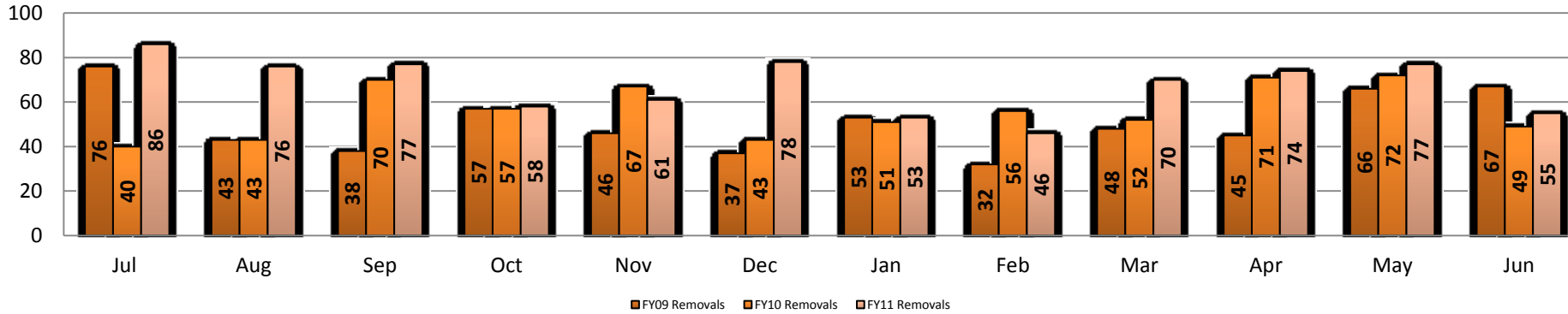
## Statewide Discharges FY09- FY11 Comparison



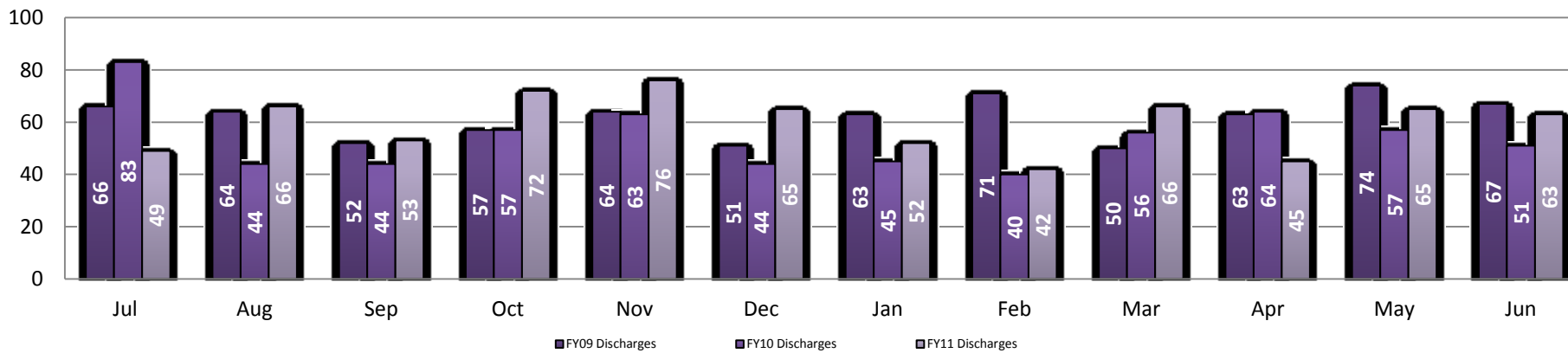
### KC Metro FY11 Removals and Discharges



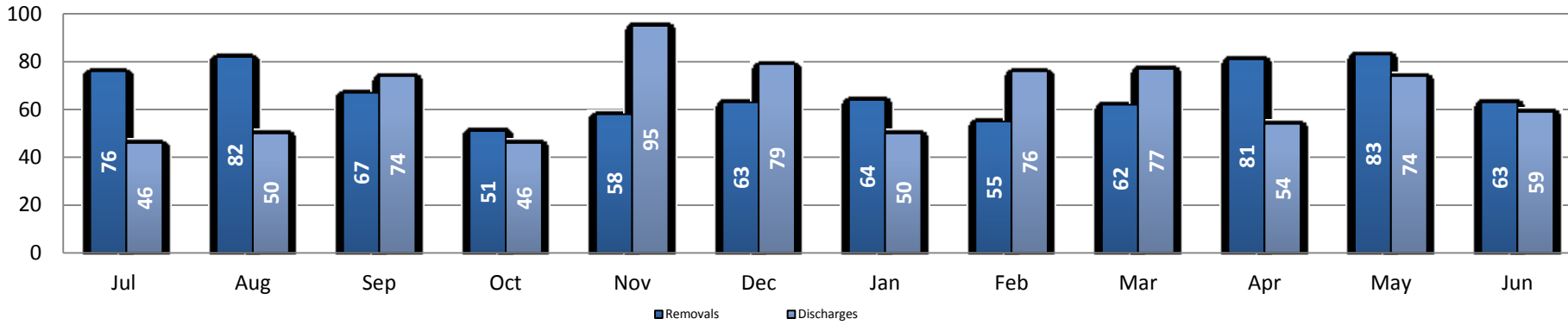
### KC Metro Removals FY09- FY11 Comparison



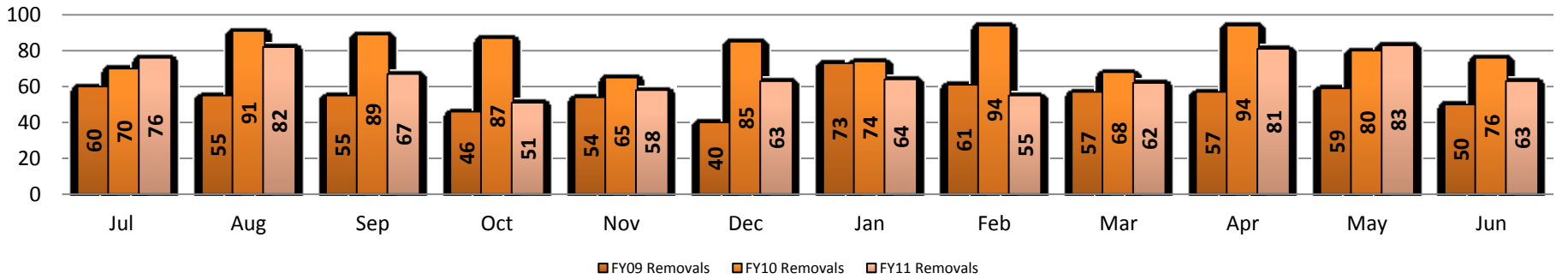
### KC Metro Discharges FY09- FY11 Comparison



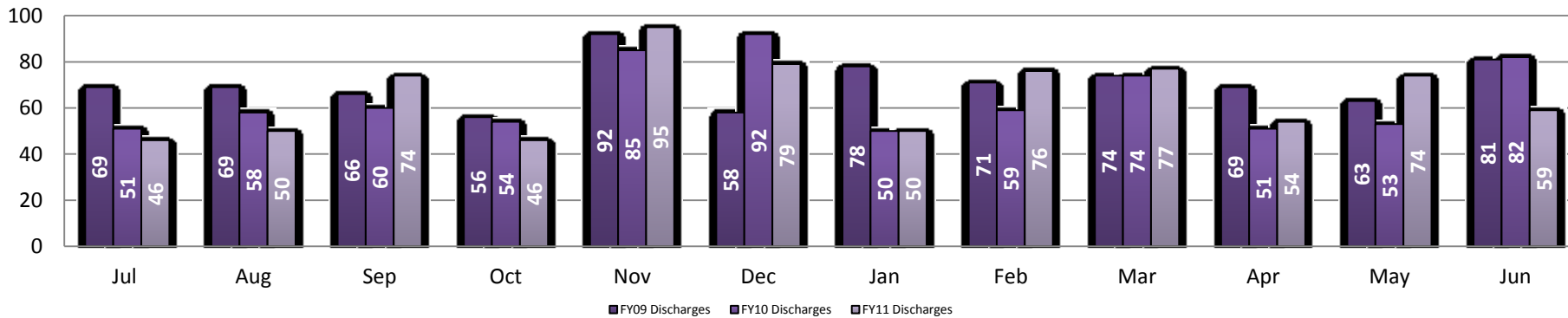
### Northeast FY11 Removals and Discharges



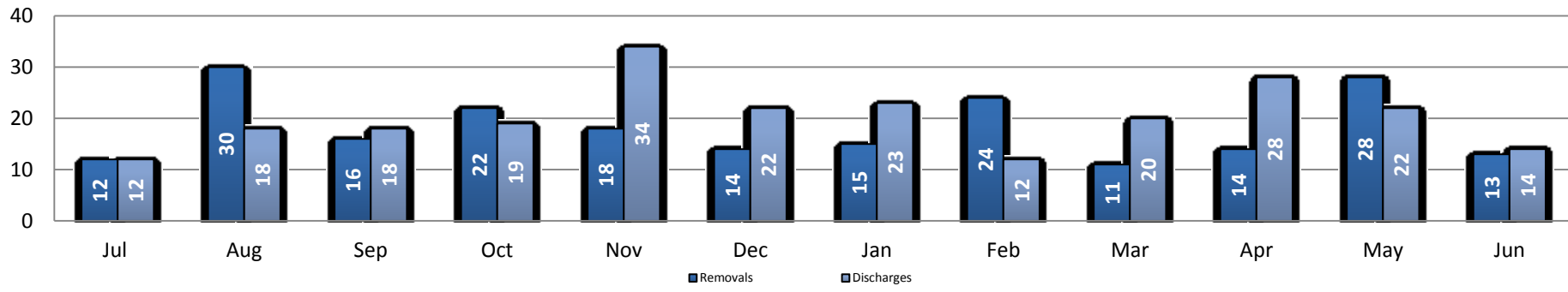
### Northeast New Removals FY09- FY11 Comparison



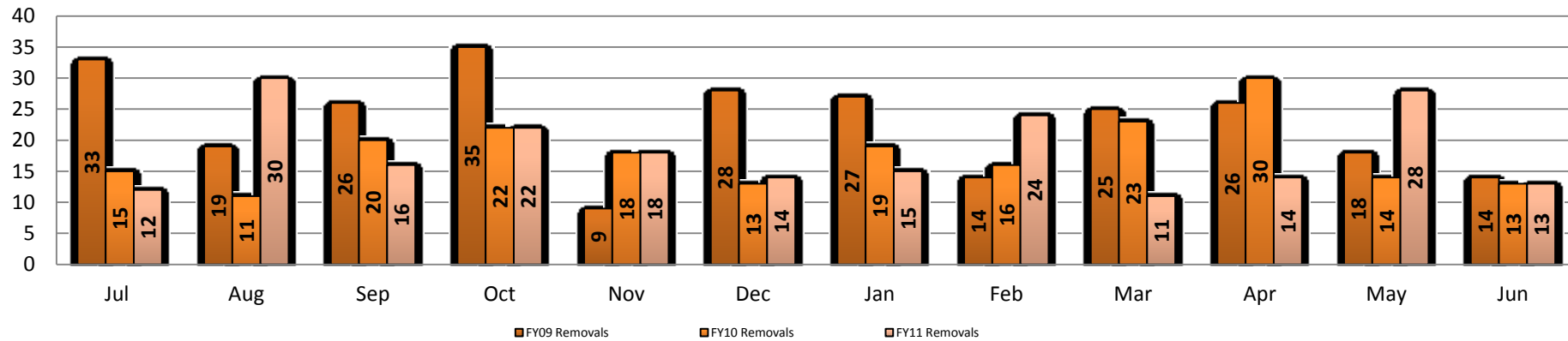
### Northeast Discharges FY09- FY11 Comparison



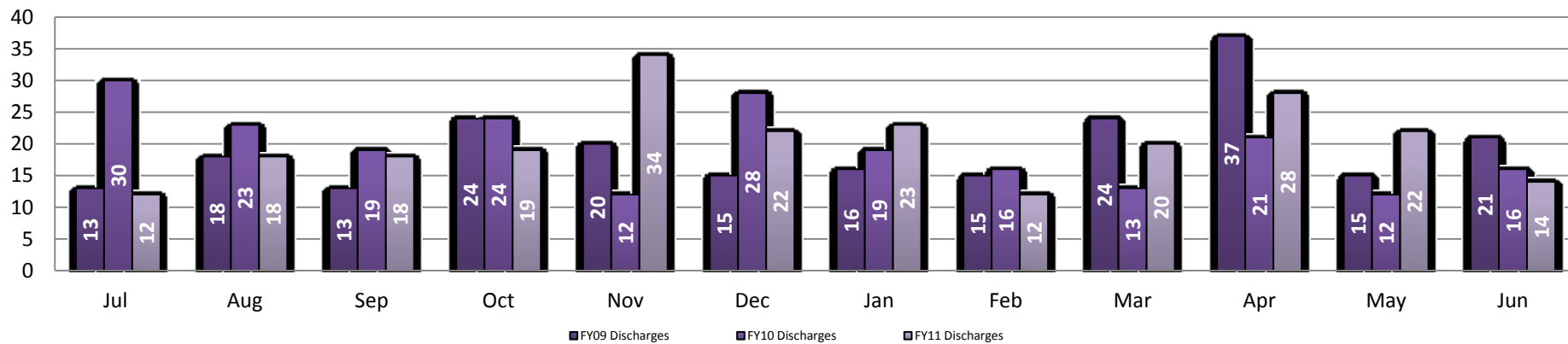
### South Central- East FY11 Removals and Discharges



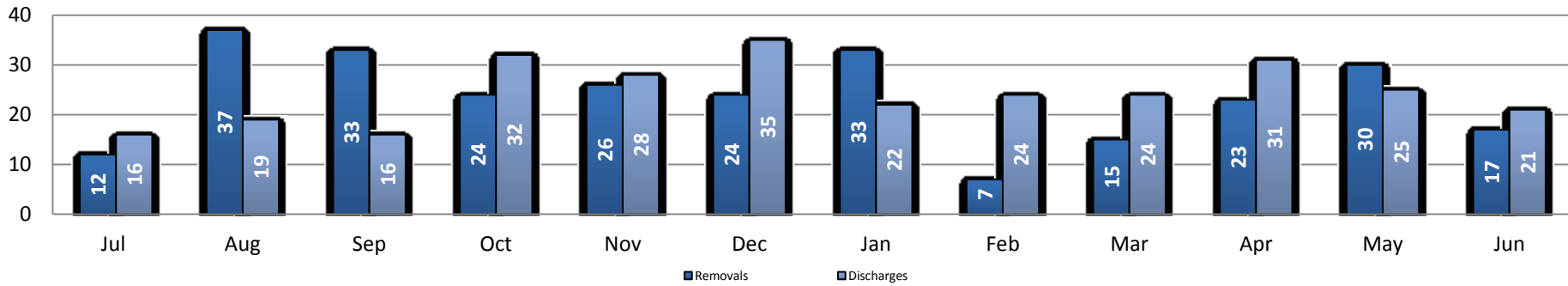
### South Central- East Removals FY09- FY11 Comparison



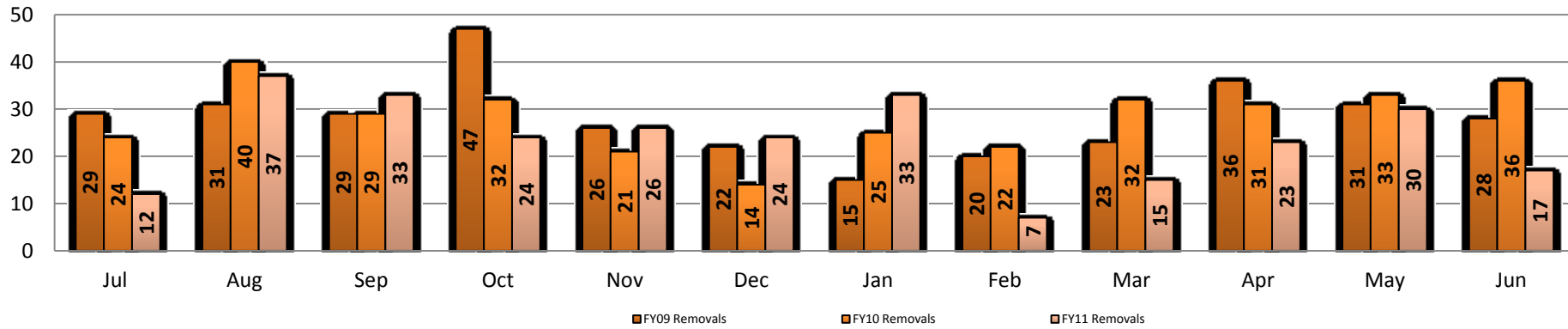
### South Central- East Discharges FY09- FY11 Comparison



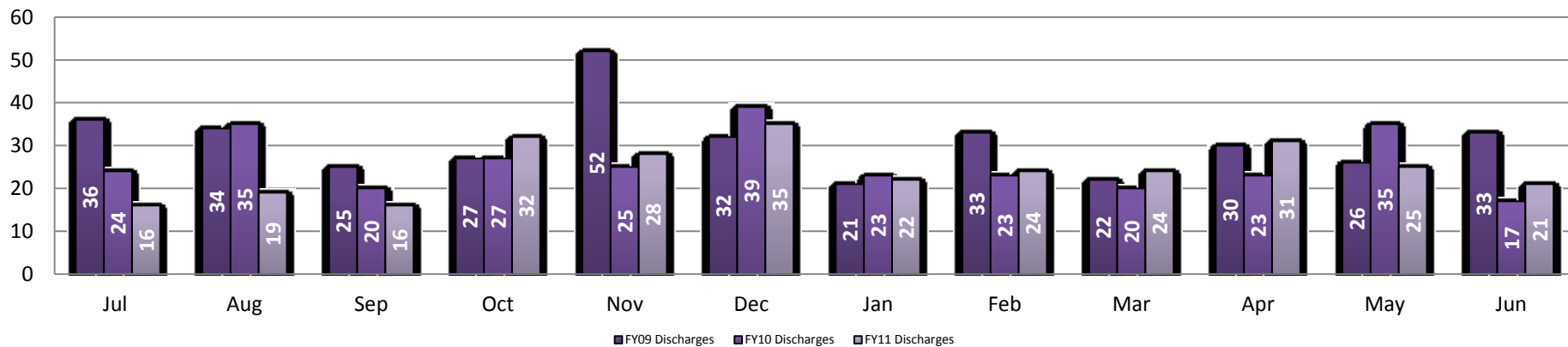
### South Central-West FY11 Removals and Discharges



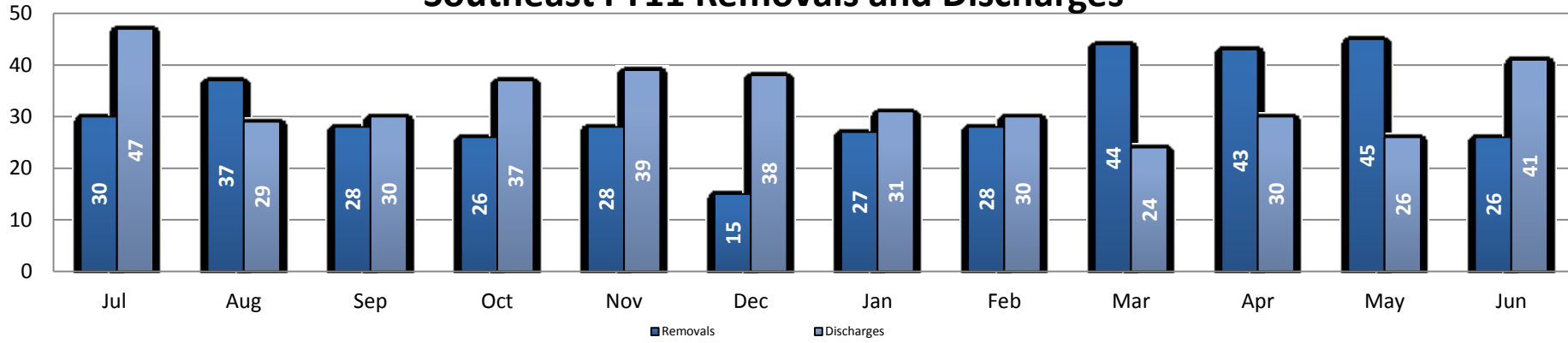
### South Central- West Removals FY09- FY11 Comparison



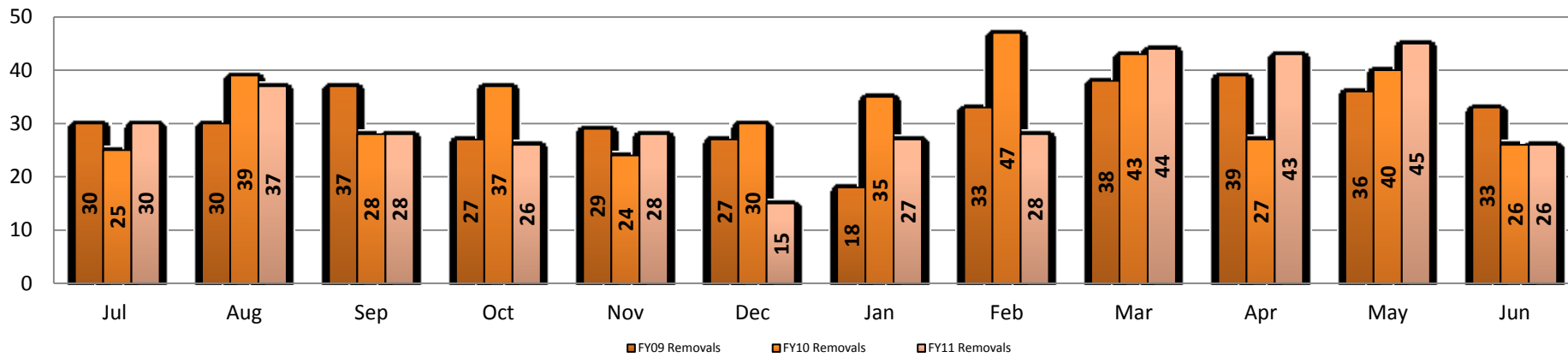
### South Central- West Discharges FY09- FY11 Comparison



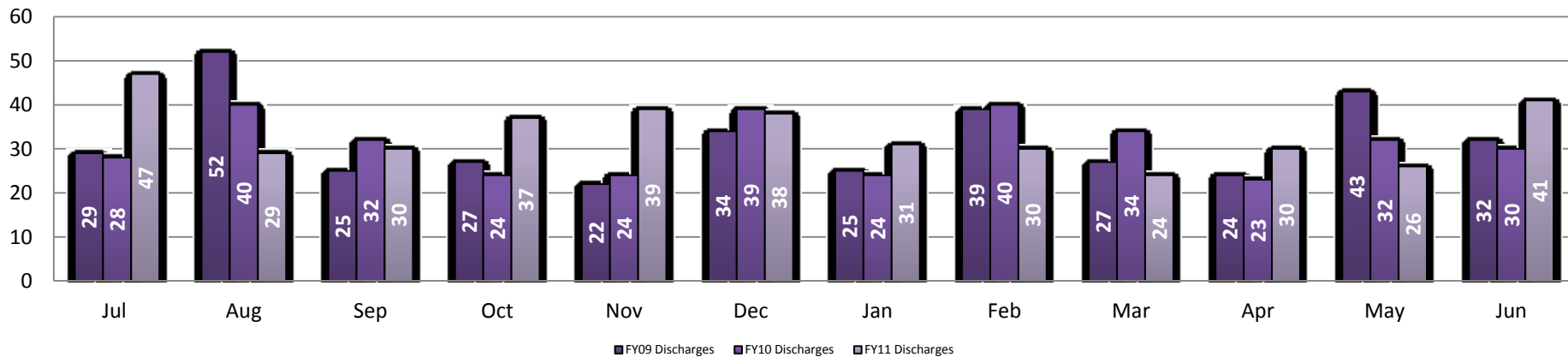
### Southeast FY11 Removals and Discharges



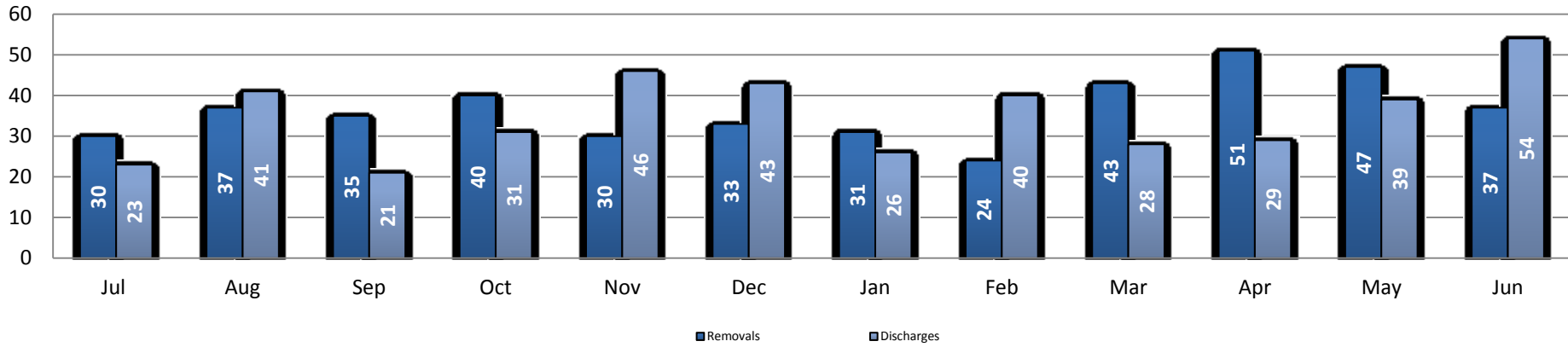
### Southeast Removals FY09- FY11 Comparison



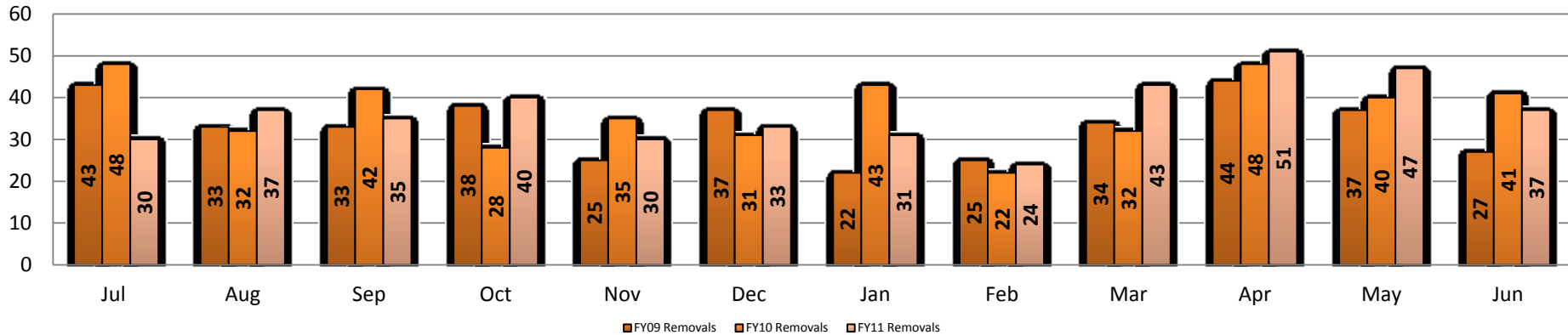
### Southeast Discharges FY09- FY11 Comparison



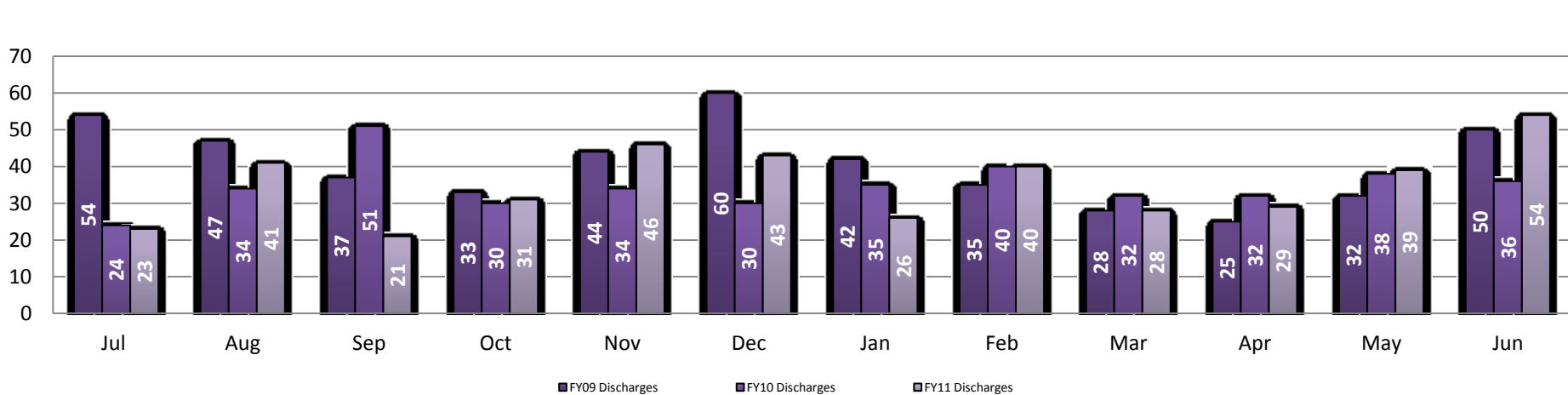
## West FY11 Removals and Discharges



## West Removals FY09- FY11 Comparison

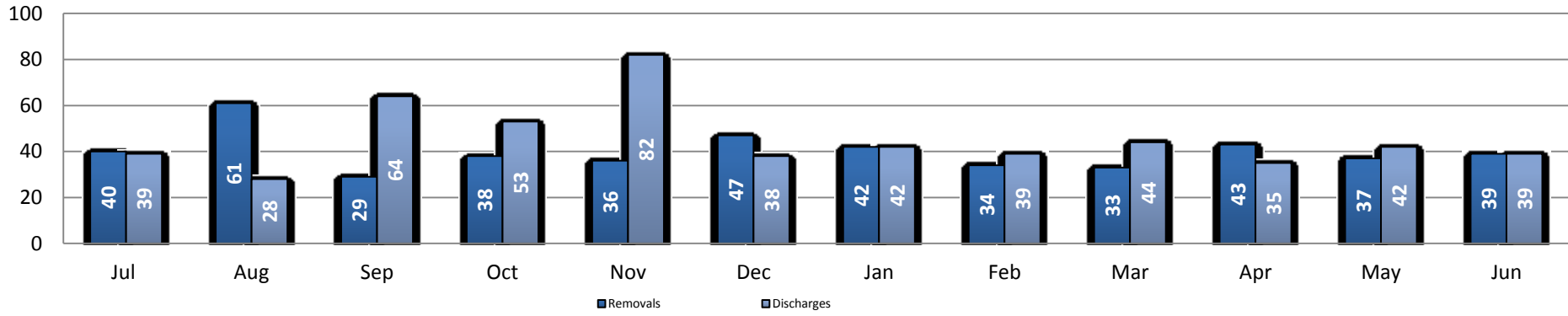


## West Discharges FY09- FY11 Comparison

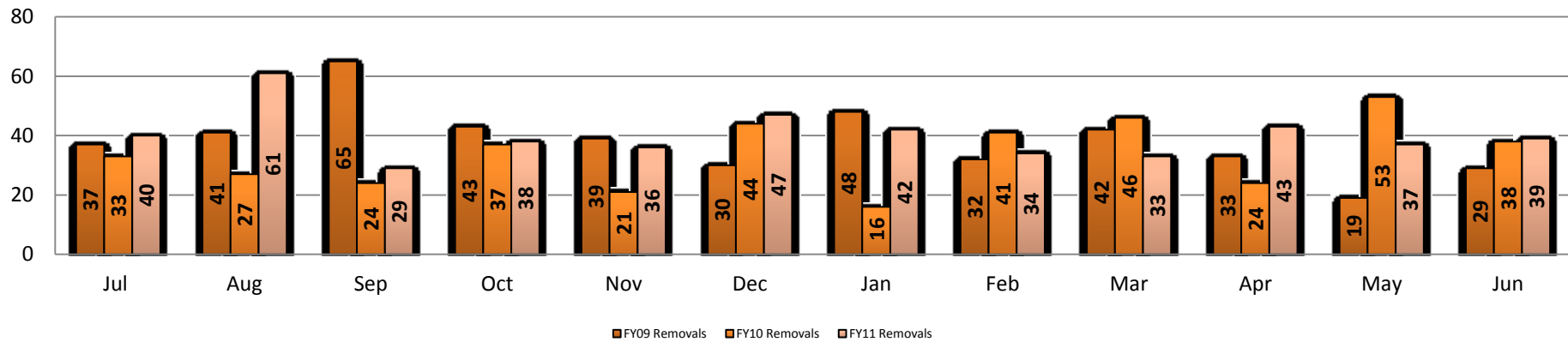




## Wichita FY11 Removals and Discharges



## Wichita Removals FY09- FY11 Comparison



## Wichita Discharges FY09- FY11 Comparison

