

# DEPARTMENT FOR CHILDREN & FAMILIES OVERVIEW

---

HOUSE HEALTH & HUMAN SERVICES COMMITTEE

SECRETARY LAURA HOWARD | 1.17.23

# DCF MISSION STATEMENT



TO PROTECT CHILDREN, STRENGTHEN FAMILIES, AND PROMOTE ADULT SELF-SUFFICIENCY.



## OUR MISSION:

To protect children, strengthen families and promote adult self-sufficiency.

## WHAT WE BELIEVE:



### PEOPLE HAVE THE CAPACITY:

- To progress
- To succeed
- To grow
- To do well in life



### PEOPLE ARE THE EXPERTS ON THEIR LIVES AND HAVE:

- Voices
- Choices
- Needs
- Strengths
- Life Stories



### WE VALUE COMMUNITIES AND THE PEOPLE THAT MAKE THEM UNIQUE:

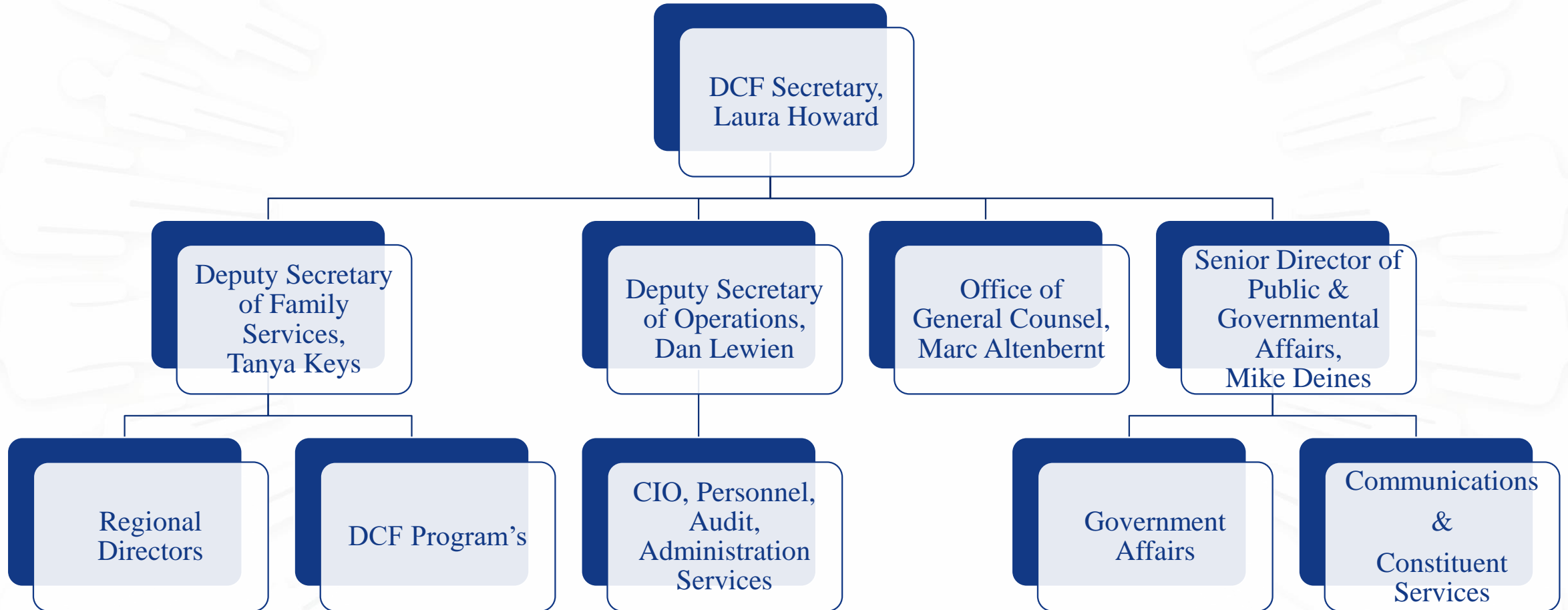
- We honor the whole person
- We rely on each other
- We are partners, not competitors
- We all benefit from a collective impact approach
- Communities bring strength through relationships and resources



### WE LEAD WITH AUTHENTICITY, CURIOSITY, AND RESPECT:

- We are innovative
- We are inclusive
- We are experts
- We are leaders
- We are authentic
- We are diverse
- We care about each other, our work and the people we serve
- We share success stories

# DCF ADMINISTRATION



# PUBLIC & GOVERNMENTAL AFFAIRS



**MIKE DEINES**

Senior Director of Public &  
Governmental Affairs

(785) 220-8167

[Michael.Deines@ks.gov](mailto:Michael.Deines@ks.gov)



**ANDREA WARNKE**

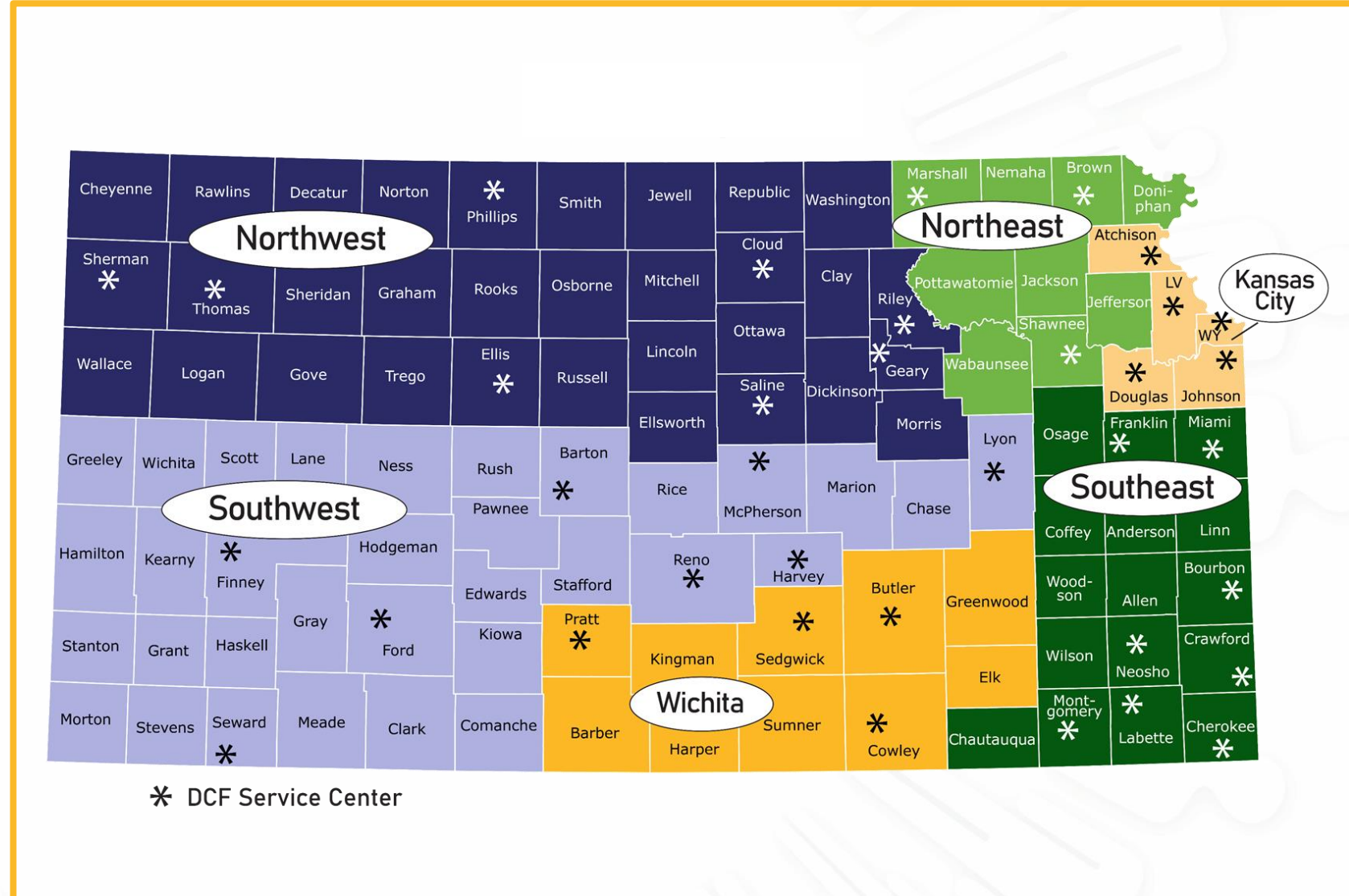
Government Relations  
Manager

(785) 213-1140

[Andrea.Warnke@ks.gov](mailto:Andrea.Warnke@ks.gov)

# DCF REGIONAL DIRECTORS

- Kansas City - Shanelle Dupree  
[Shanelle.Dupree@ks.gov](mailto:Shanelle.Dupree@ks.gov)
- Northeast - Caroline Hastings  
[Caroline.Hastings@ks.gov](mailto:Caroline.Hastings@ks.gov)
- Southeast - Anita Cooper  
[Anita.Cooper@ks.gov](mailto:Anita.Cooper@ks.gov)
- Northwest - Pamela Beach  
[Pamela.Beach@ks.gov](mailto:Pamela.Beach@ks.gov)
- Southwest – Stacey Tweedy  
[Stacey.Tweedy@ks.gov](mailto:Stacey.Tweedy@ks.gov)
- Wichita - Dee Nighswonger  
[Dee.Nighswonger@ks.gov](mailto:Dee.Nighswonger@ks.gov)



# ORGANIZATION

## DCF Major Programs

- Programs collaborate for family and individual outcome achievement
- Programs are supported by core operations.
- Program and practice are carried out by teams in 36 service centers across 6 Regional Offices



# PREVENTION & PROTECTION SERVICES



Director of Prevention / Safety & Protection – Pam Hahn

Director of Permanency – Scott Henricks

Director of Program Implementation & Quality Assurance – Deanne Dinkel

PPS helps families and vulnerable adults by providing:

- Protection services (PRC and investigations)
- Family-based assessments
- Family support services
- Family preservation
- Families first prevention services
- Foster care
- Adoption services
- Independent living services for older youth
- Licensing foster homes

Kansas Protection Report Center



1-800-922-5330

# SUCCESS STORIES

## KANSAS PRACTICE MODEL

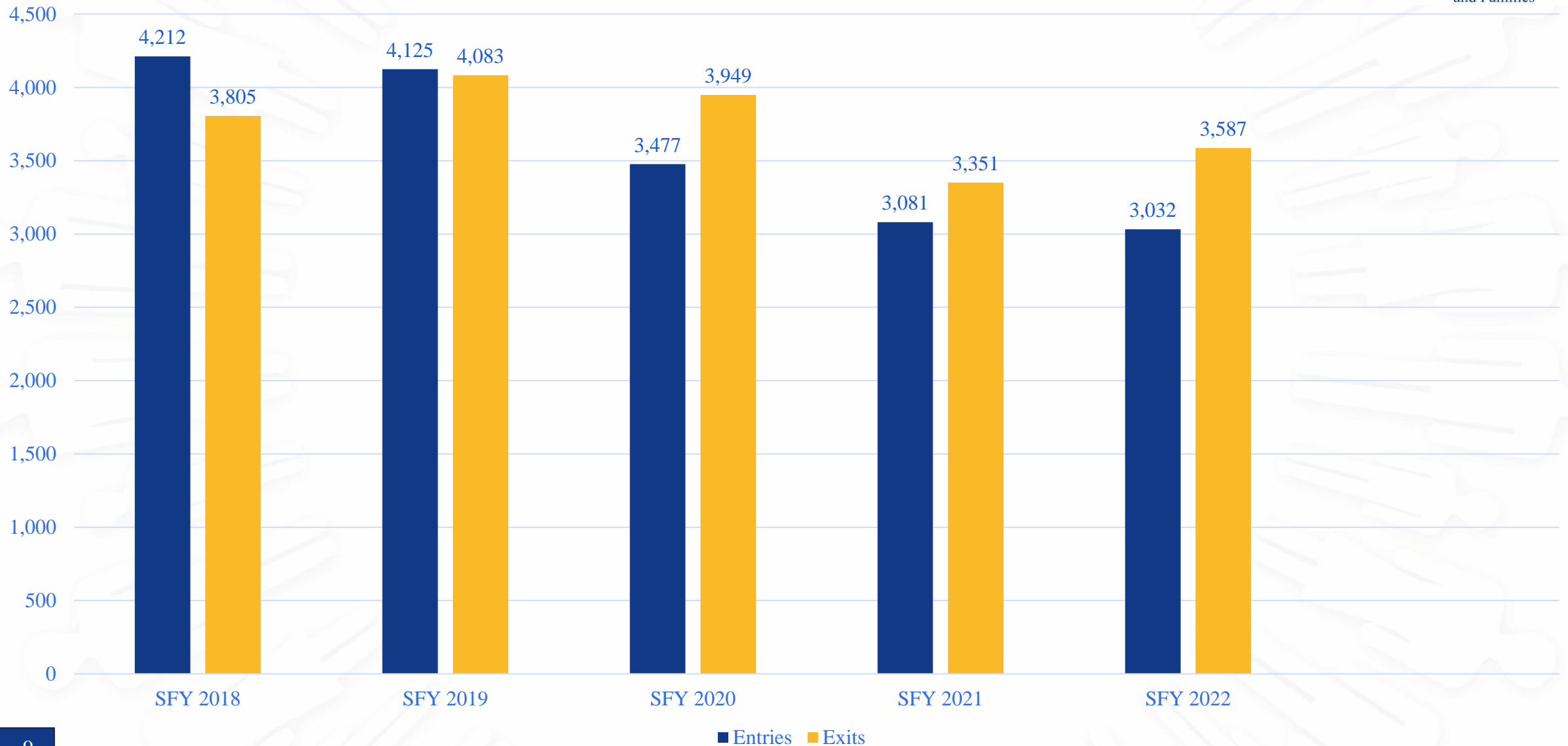


Provides a consistent and customized framework to support engagement, safety planning, and decision making to guide our work alongside families, children, and youth.

- Foundation of the Kansas Practice Model:
  - Team Decision Making
  - Family Finding
  - Signs of Safety
  - Structured Decision Making
  - Solution Focused Questions
  - Resolutions Approach
- As a result of this work, we are seeing a dramatic drop in the need for foster care:
  - The state currently has 6,248 youth and children in care, down from 7,600 at the beginning of the Kelly administration.
  - In FY 2020, there were 15 percent fewer children entering foster care than in FY 2019.
  - In FY 2021, there were 11 percent fewer than in FY 2020.
  - In FY 2022, there were 2 percent fewer than in FY 2021.



## Children Entering & Exiting Foster Care Across Years



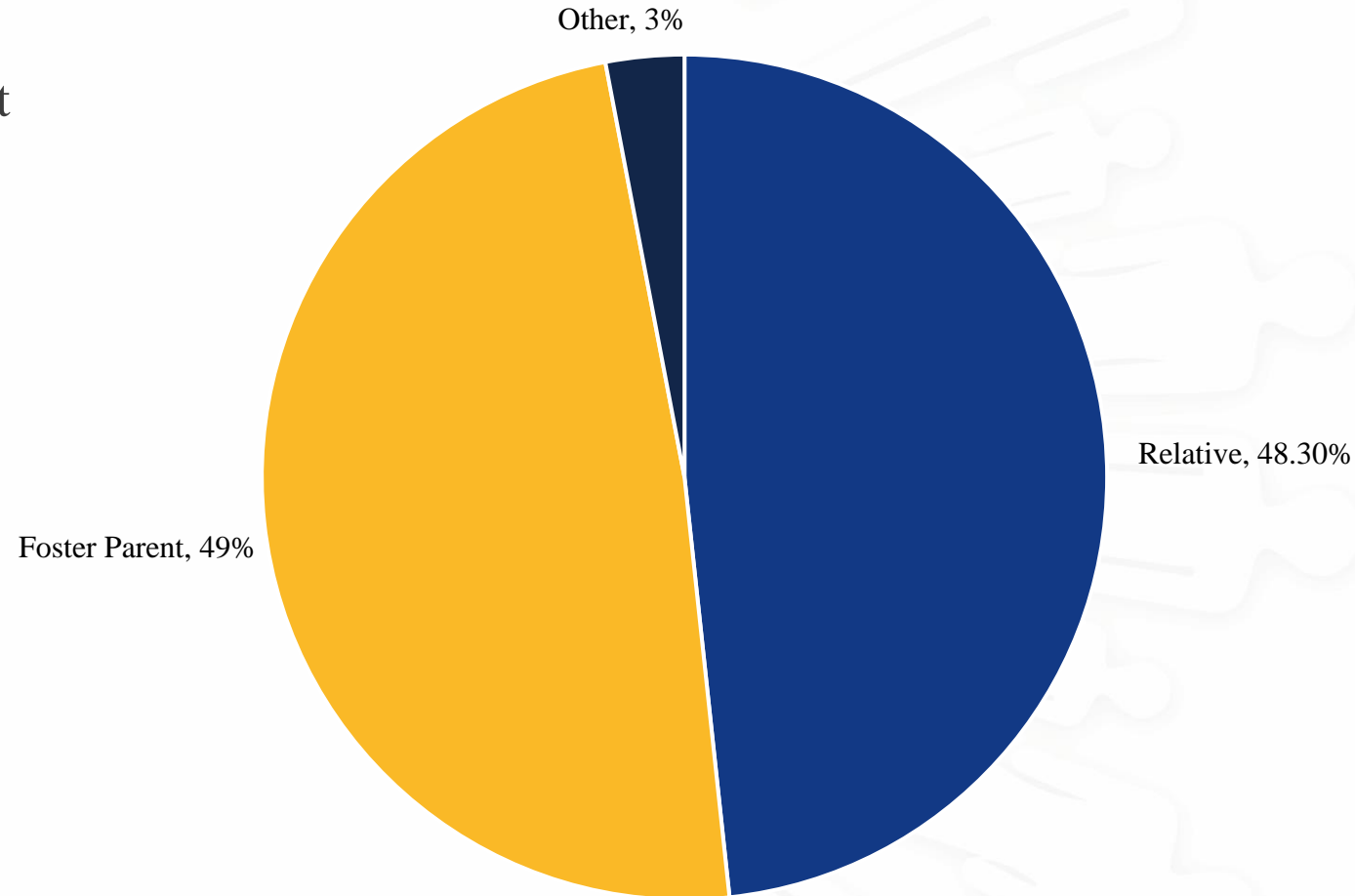
# SUCCESS STORIES

## FINALIZED ADOPTIONS

Adoptions increased in SFY2019 averaging just over 1,000 annually the past 4 years.

- The average age of a child at the time of the finalized adoption is 7 years with two-thirds of children adopted age 8 or younger (65%).
- The average length of time in care is 39 months and over half of children (59%) are adopted as part of a sibling group. \

In SFY 22, Nearly all 948 adoptions were finalized with a relative or foster parent and in SFY 22, 48.7 % were with a foster family and 48.3% were with a relative.



Adoptive Parent Relationship, SFY 2022

# SUCCESS STORIES

## FAMILY FIRST PREVENTION SERVICES ACT



- Significant impact on reducing the need to bring children into the custody of the Secretary.
  
- The program provides grants to agencies providing services in:
  - Mental Health
  - Parent Skill Building
  - Kinship Navigation
  - Substance Use Disorders
  
- A chief measure of the program's success is the percent of children remaining at home after 12 months of referral. Initial data shows that overall, 89% of children and youth who have reached 12 months from the time of referral have remained at home. The program goal is 90%. The rates for two categories, kinship navigation and mental health, were 100% and 90%, respectively.

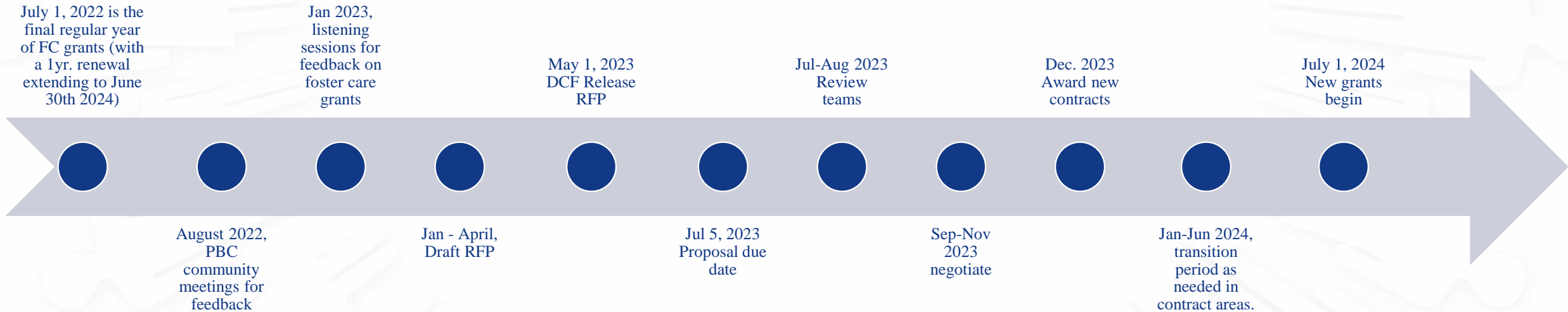
# STATUS UPDATE

## FOSTER CARE GRANTEE RE-BID PROCESS



DCF is currently engaging listening sessions for input into service components, quality assurance and other grant requirements

RFP releases May 2023 with award in Dec. 2023 for new grant start date of July 1, 2024.



# CHILD SUPPORT SERVICES

Director of Child Support Services – Marcie Martinez

Child Support Services helps children receive the financial support necessary for their growth and development. The program assists by:

- Establishing parentage and orders for child support
- Locating non-custodial parents
- Enforcing child support orders
- Modifying support orders, as needed



Child Support Service Center

1-888-757-2445

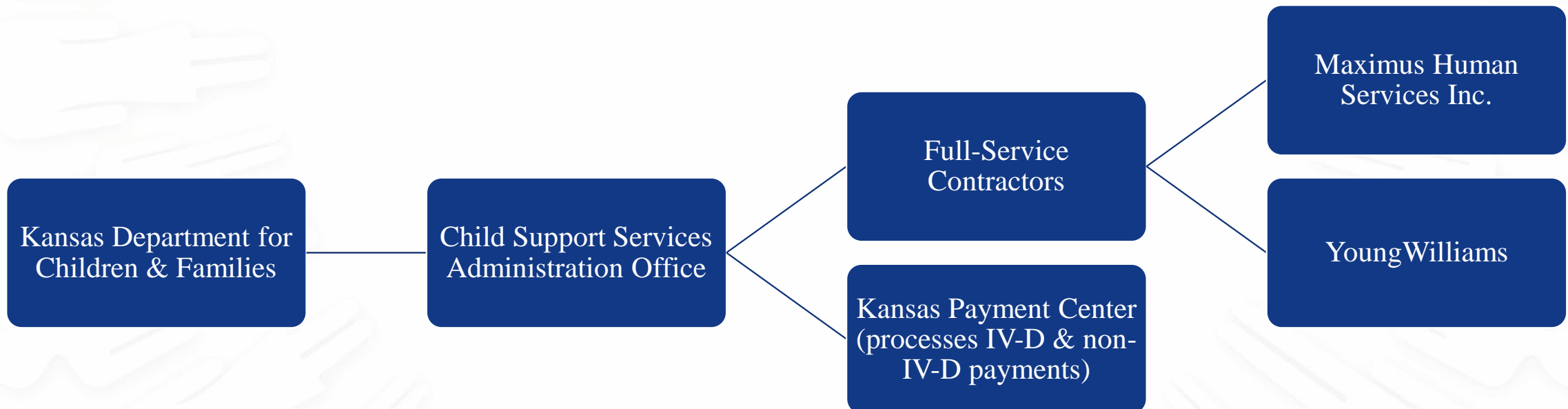
7 a.m. to 6 p.m., Monday - Friday

# SUCCESS STORIES

## CHILD SUPPORT CONTRACTORS

In Fall 2021 Kansas moved to a two full-service contractors and eliminated a separate client contact center in an effort to simplify IV-D services for Kansans.

All payments and disbursements continue to go through the Kansas Payment Center (KPC).



# ECONOMIC & EMPLOYMENT SERVICES



Director of Economic & Employment services – Sandra Kimmons

Economic and Employment Services (EES) provides a variety of programs that can help families achieve self-sufficiency. These include:

- Cash assistance (Temporary Assistance for Needy Families)
- Food assistance (Supplemental Nutrition Assistance Program)
- Childcare assistance
- Employment assistance
- Energy assistance
- Emergency Water Assistance Program

Kansas Benefits Card Support



1-800-831-5235

# SUCCESS STORIES

## DCF WORK PROGRAMS



**TANF Employment Services.** TANF cash assistance adults who are required to engage in work programs must participate 20-30 hours per week in order to continue receiving assistance. There were a total of 2848 new employments from July 2021 – June 2022

**Generating Opportunities to Attain Lifelong Success (GOALS) .** Goals is a voluntary program for adults in families who are receiving food assistance but not TANF cash assistance. The program piloted in 2016 - 2018 and was implemented statewide in 2019.

**Food Assistance Employment & Training (FAE&T) or SNAP E&T.** Able bodied adults without dependents are required to work with FAE&T to meet employment goals and continue to receive SNAP. There were a total of 353 new employments from 1/1/2022 to 8/31/2022.

**Vocational Rehabilitation (VR).** Available to individuals with a physical or mental impairment that results in a substantial impediment to employment and who require and can benefit from VR services to achieve employment. The program assists clients in finding competitive integrated employment and achieving self-sufficiency. In SFY 2022 1,113 Achieved competitive employment.

**Pre-Employment Transition Services (Pre-ETS).** Empowers youth with disabilities to achieve their highest employment potential through job exploration, counseling on postsecondary education options, self advocacy training, and work-related learning experience.



**NUMBERS SERVED  
in SFY 22**

**SNAP**

**87,643**  
children

**110,647**  
adults

**CHILD CARE**

**11,773**  
children

**1,777**  
average HEROES  
children per month

**TANF**

**5,389**  
children

**1,974**  
adults

**NEW EMPLOYMENTS**

**TANF**  
**2,848**

**GOALS**  
**548**

# STATUS UPDATE

ABLE BODIED ADULT WITHOUT DEPENDENTS –  
2022 Sen. Sub. For H.B. 2448



Per 2022 Sen. Sub. For H.B. 2448, all Able-Bodied Adults without Dependents on the SNAP program must participate in SNAP Employment & Training as a condition of receiving food assistance if:

- The ABAWD client is aged 18 – 49; and
- The ABAWD client is not employed at least 30 hours a week.

The program went live on October 1<sup>st</sup>, 2022, after the USDA approved the State's plan. DCF has 15 career navigators for implementation and are collaborating with 5 community organizations for the program.

# REHABILITATION SERVICES

Director of Rehabilitation Services – Dan Decker

Rehabilitation Services offers a variety of programs to meet the diverse needs of Kansans with disabilities, including:

- Vocational services
- Independent living
- Services for older Kansans who are blind or visually impaired
- Disability determination services on behalf of the Social Security Administration

## Vocational Rehab

- 8,413 Kansas with disabilities
- 1,113 Achieved competitive employment.

## Disability Determination Services

- 18,254 Disability Claims
- 96.5% Accuracy Rate

Rehabilitation Customer Service Center



1-866-213-9079

# STATUS UPDATE

## COMPREHENSIVE CHILD WELFARE INFORMATION SYSTEM

- The new Comprehensive Child Welfare Information System (CCWIS) will modernize state child welfare systems and develop interfaces between the various agencies serving the Child Welfare and Adult Protectives Services programs.
- Currently, there are five legacy systems of varying ages and capabilities supporting child welfare programs. Major components of the existing systems use aging mainframe technology, unsupported operating systems, and obsolete programming languages. This makes the present systems difficult and costly to maintain, modify, or improve.
- Funding was added by the Legislature for FY 2021 to FY 2023 for the planning and design phase with the understanding that an estimated \$100 million would be needed for the development phase lasting 3 to 4 years.
- High Level Plan has been finalized by the Department of Administration for RFP issue.

# STATUS UPDATE

## COMPREHENSIVE CHILD WELFARE INFORMATION SYSTEM



### Design, Development and Integration RFP

- Seeks bidders who will lead the CCWIS effort alongside State resources to design, develop and implement the CCWIS system

### Quality Analysis RFP

- Seeks bidders who will provide quality analysis services of project deliverable from the DDI vendor, such as the validation of system functionality delivered compared to the system requirements provided by the State

### Independent Verification and Validation RFP -

- Seeks bidders providing services for Independent Verification and Validation on the project. The IV&V vendor will review overall project performance such as adherence to project schedule and scope and provide analysis and feedback based on regularly scheduled interviews with Project team members, leaders and vendors

# DEPARTMENT FOR AGING & DISABILITY SERVICES

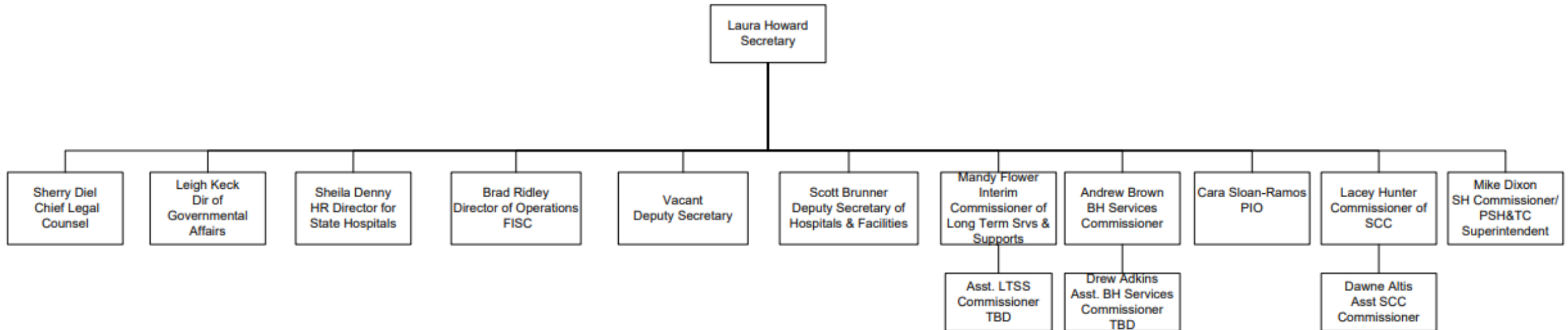
---

HOUSE HEALTH & HUMAN SERVICES COMMITTEE  
SECRETARY LAURA HOWARD | 1.17.23

# ORGANIZATIONAL CHARTS

## Kansas Department for Aging & Disability Services Senior Leadership Staff

December 30, 2022



# GOVERNMENTAL AFFAIRS



**Leigh Keck**  
Director of Governmental Affairs

(785) 230-6214

[Leigh.Keck@ks.gov](mailto:Leigh.Keck@ks.gov)



# STATE HOSPITALS



Kathy Stiffler, Ph.D., Superintendent,  
Kansas Neurological Institute

Lesia Dipman, LMSW,  
Superintendent, Larned State Hospital

Ashley Byram, LMSW,  
Superintendent, Osawatomie State  
Hospital

Mike Dixon, Ph.D., LP,  
Superintendent, Parsons State  
Hospital & Training Center

# MAJOR PROGRAM AREAS

- Long-Term Services and Support Commission
- Behavioral Health Services Commission
- Survey, Certification & Credentialing Commission
- State Hospital Commission

# LONG TERM SERVICES & SUPPORTS

The Long Term Services and Supports (LTSS) Commission was formed in the fall of 2021 by combining the Home and Community Based Services (HCBS) and Aging Services programs with the Nursing Facility and Adult Care Home program.

- Home and Community Based Services (HCBS)
  - HCBS 1915(c) Medicaid Waiver Programs
  - Aging & Disability Resource Centers (ADRCs)
  - Administrative Case Management
- Aging Services
  - Older Americans Act/Senior Care Act
  - Senior Nutrition Program
  - PACE
- Nursing Facility Program & Reimbursement
  - Rate Setting
  - Programmatic Regulations
  - ICF/IID Gatekeeping

# PRIORITIES & ACCOMPLISHMENTS

## LONG TERM SERVICES & SUPPORTS



- 10% FMAP Enhancement Projects focusing on Workforce, Employment, and Access to Care totaling over \$93.2M
- HCBS Settings Final Rule Compliance
- Autism & SED Waiver Renewals
- Waiver Amendments (paid family caregivers, telehealth options, performance measures)
- Expansion of Program of All-Inclusive Care for the Elderly
- Money Follows the Person (MFP) Grant

# 2022 SPECIAL COMMITTEE ON I/DD WAIVER MODERNIZATION



- The 2022 Special Committee on I/DD Waiver Modernization met throughout the interim to consider development of a Community Supports Waiver (CSW) as a potential additional 8th Home & Community Based Services Waiver in Kansas.
- KDADS is close to completion of cost estimates for the 11 services identified by the Special Committee to potentially be included as part of a CSW
- KDADS is working to re-start the workgroup on the Medicaid Functional Eligibility Instrument (MFEI) which is a strength-based assessment
- Special Committee recommendations also included:
  - The CSW should include an annual individual cost cap of \$20,000 and individual budget authority across all services
  - Support for transition of the Medicaid managed care system from the 1115 waiver to the 1915(b) waiver

# BEHAVIORAL HEALTH SERVICES COMMISSION

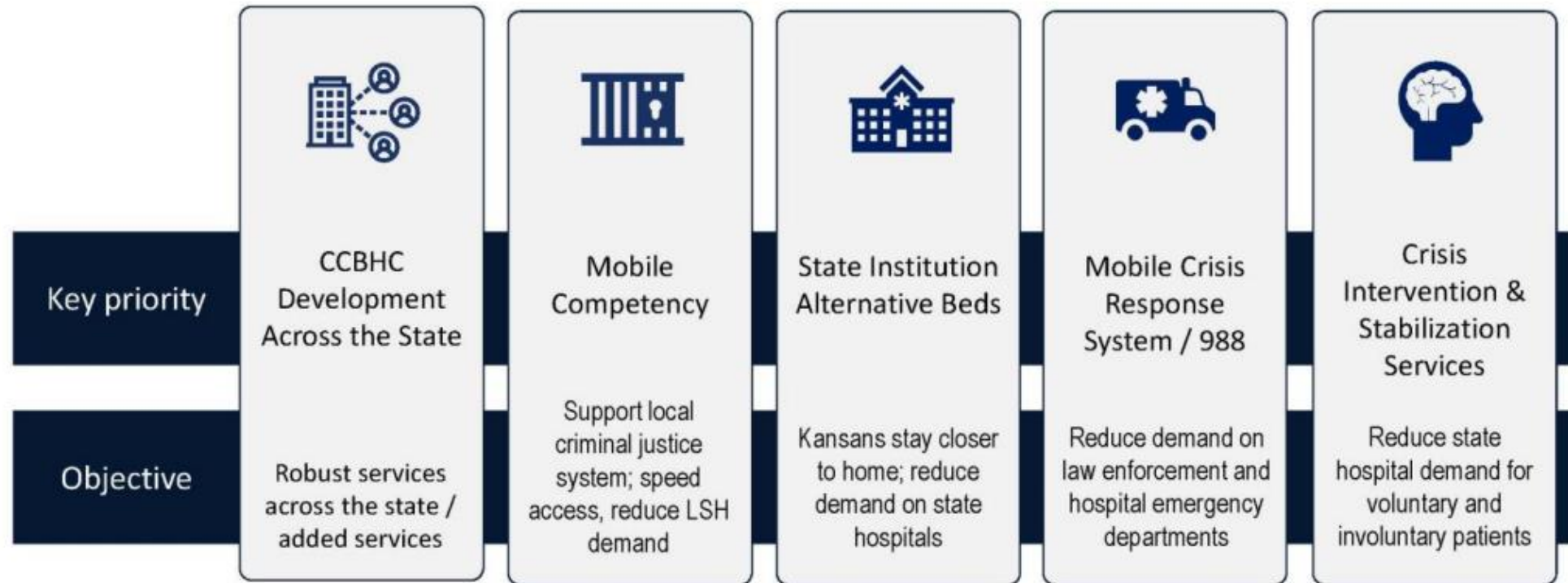


The Behavioral Health Services Commission includes the Mental Health and Substance Use Disorders programs.

- Mental Health Services contracts with community agencies to provide services to individuals and families who experience mental illness. The program provides services in the least restrictive environment.
- Substance Use Disorder Services contracts with community agencies to provide services to individuals and families for the prevention and treatment of addictions. Substance Use Disorder Services ensures that a continuum of care is available and accessible in every region of the state.
- KDADS distributed federal state opioid response funding grants, including \$2.6M for statewide naloxone distribution

# BEHAVIORAL HEALTH MODERNIZATION

## Behavioral Health Modernization



# PRIORITIES & ACCOMPLISHMENTS

## BEHAVIORAL HEALTH



- Developed a comprehensive 988 plan to expand NSPL contact centers capacity to improve in-state answer rate, bolster community-based crisis services and implemented \$3M in grant funding to NSPL contact centers.
- Completed the State Suicide Prevention Plan and launched the Kansas Suicide Prevention Coalition.
- Developed a plan for community integration, as well as funded and staffed the Community Integration Section within BHS Commission.
- Launched a 3-year effort to enroll and certify CCBHCs in KanCare.
- Launched the State Institutional Alternative in KanCare program to reduce SGF costs for care of state patients diverted to private facilities and reduce demand for admission at state hospitals.
- Awarded a contract to KVC Hospitals for the opening and operation of an acute private psychiatric hospital in Hays, that will serve children and youth as a State Institutional Alternative.



# SURVEY CERTIFICATION & CREDENTIALING



The Survey Certification and Credentialing Commission protects public health in Kansas through the inspection and licensing of adult care homes and providers of disability and behavioral health services.

- Develops and enforces regulations related to adult care homes and providers of disability and behavioral health services.
- Field staff document compliance with state regulations and federal certification standards through onsite surveys and investigate cases of alleged abuse, neglect, or exploitation
- In rare cases, the commission may assume temporary management of a nursing home facility pursuant to a court order.

# PRIORITIES & ACCOMPLISHMENTS

## SURVEY & CERTIFICATION



- Finalizing Crisis Intervention Center Regulations
- Continue to pursue buyers for remaining NF in receivership.
- Focus on the backlog of certification work created during the Public Health Emergency such as abbreviated and recertification surveys.
- Continue to develop Residential Care Facility Regs and draft Private Psychiatric Hospital regulations.
- Continues to seek ways to fill the agencies surveyor positions including expanding the pool to other healthcare professionals, creating bonuses and increasing licensed or registered staff salaries to be more competitive with the market.
- Continue to work with providers to address workforce issues.

# STATE HOSPITAL COMMISSION



The State Hospital Commission provides leadership, guidance, direction, oversight, training and support to the State Hospitals.

- The Commission provides day to day management and collaboration with Superintendents and executive staff at the State Hospitals, ensuring compliance with conditions of participation for certification with Centers for Medicaid and Medicare Services (CMS) and accreditation with the Joint Commission.
- The Commission is vital in strengthening stakeholder relations to increase the services provided in the community for individuals with intellectual disabilities and or behavioral health needs.

# PRIORITIES & ACCOMPLISHMENTS

## STATE HOSPITALS



Lifted the moratorium on voluntary admissions in January 2022. That was possible due to availability of State Institution Alternative hospitals and progress on remodeling projects at OSH.

### State Hospital Pay Increases in FY22-23

- Direct Care Salary Increases through Executive Orders
- 24/7 Pay Plan for nursing and other employees at all Hospitals
- 5% Salary Increase in FY23 Budget

Promoting community-based competency evaluation and restoration.

- Expanding the use of mobile vendor and Larned State Hospital Staff to complete evaluations and competency restoration in jails.
- \$2.8 million in new funding to support projects working with mental health centers, jails, and courts to expand the provider pool for competency work.
- 2022 H.B. 2508 expanded options for community-based evaluation and restoration.

Implementing an Electronic Health Records system for all four State Hospitals.

# 2022 SPECIAL COMMITTEE ON MENTAL HEALTH BEDS



2022 budget proviso created the Special Committee on Mental Health Beds. The committee recommended release of \$15M SGF to construct up to 50 inpatient beds in the Sedgwick County area.

- State Finance Council (SFC) released the \$15M to KDADS on December 2.
- Have hired a project manager to work on the project
- 25 beds for forensic competency evaluations / 25 beds for acute inpatient psychiatric
- Working with Sedgwick County to build or renovate a facility in the area that will be operated by KDADS
- The Special Committee also recommended:
  - Capacity to for future expansion beyond 50 beds
  - \$5M fund for a two-year pilot, administered by KDADS, to reimburse hospitals and jails that are observing patients waiting on transfer to state hospitals

# QUESTIONS?

---