

The background of the slide is a blue-tinted photograph of an elderly man with a white beard and a young child. The man is on the left, looking down at the child on the right. The child is smiling and looking towards the camera. The overall mood is warm and intergenerational.

# DCF & KDADS: CHILDREN AND SENIORS PROGRAMS

PRESENTED TO:

HOUSE CHILDREN AND SENIORS  
COMMITTEE

JANUARY 14, 2021

PRESENTED BY:

LAURA HOWARD, SECRETARY  
DEPARTMENT FOR CHILDREN AND FAMILIES  
DEPARTMENT FOR AGING AND DISABILITY SERVICES

# KDADS Major Program Areas



Nutrition Services  
and In-Home  
Services



Home and  
Community Based  
Services



Behavioral Health  
Services



Long-Term Care



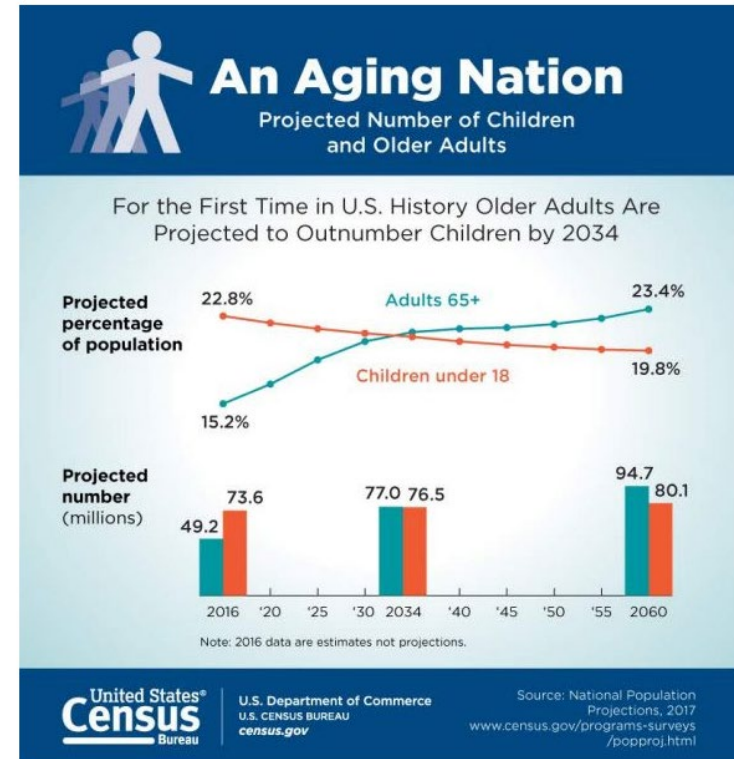
State Hospitals

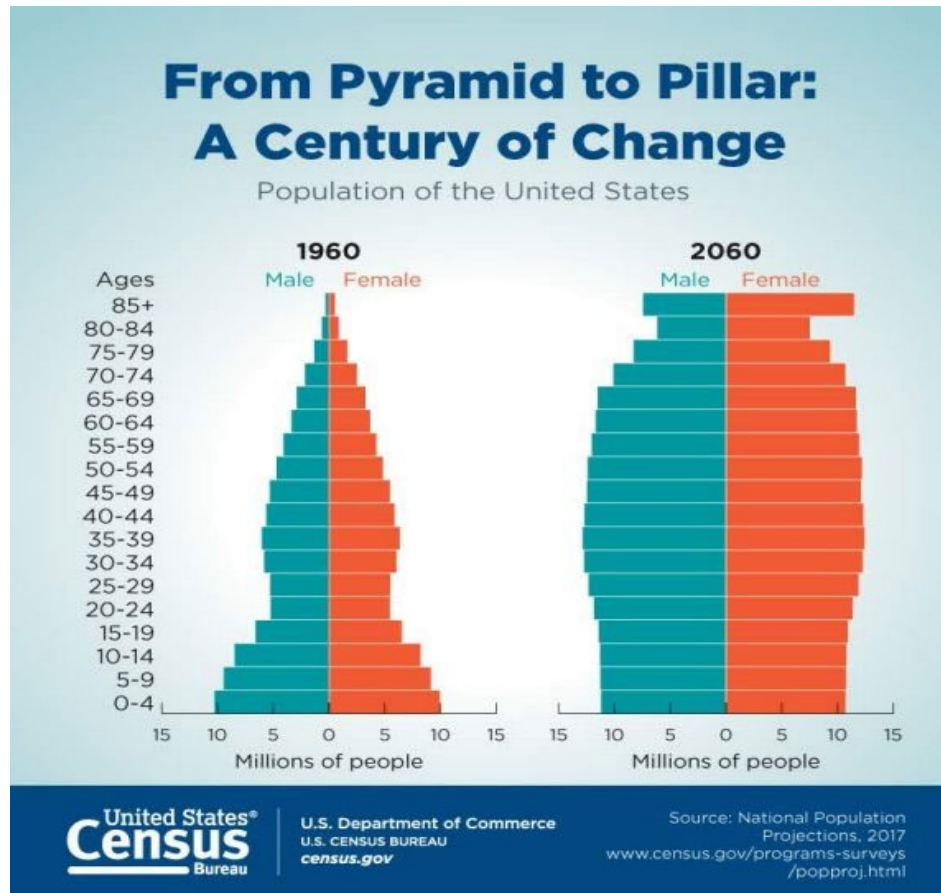
# KDADS Services to Seniors



# Graying of America

- **In less than two decades (thirteen years), the graying of America will be inescapable as older adults are projected to outnumber kids for the first time in US History.**
- Middle-aged currently outnumber children, but the country will reach a new milestone in 2034. That year, the U.S. Census Bureau projects older adults will edge out children in population size: People age 65 and over are expected to number 77.0 million, while children under age 18 will number 76.5 million.
- The driving force for this increase is the baby boomers. (Born from 1946 to 1964.)





# Older Americans Act Programs

Signed into law in 1965, the OAA established the Aging Network which provides community social and nutrition services for older persons and their caregivers. The OAA funds services that keep older adults healthy and independent in their homes.

## *Title III—Grants for State & Community Programs*

- **Supportive Services** (Title III-B): Homemaker, Attendant Care, Transportation, Case Management, Legal Assistance etc.
- **Nutrition** (Title III-C): Congregate & Home-Delivered Meals, Nutrition Education
- **Disease Prevention and Health Promotion** (Title III-D): Evidence-Based Health Promotion and Disease Prevention Programs
- **Family Caregiver Support** (Title III-E): Respite, Counseling, Information, Support Groups, Homemaker etc.

## *Title VII—Elder Rights Protection*

- **Long-Term Care Ombudsman Program**
- **Prevention of Elder Abuse, Neglect and Exploitation**
- **State Legal Assistance Development Program**

# Medicare Programs

---

KDADS oversees and implements grants that assist individuals who are aging or have a disability through the Senior Health Insurance Counseling for Kansas (SHICK), Senior Medicare Patrol (SMP) and Medicare Improvements for Patients and Providers Act (MIPPA) Grant programs.

The SHICK program assists individuals with questions related to Medicare. Roughly 30,679 contacts were made by KDADS and the AAAs from April 2019 through March 2020.



The SMP program educates the community about reporting Medicare/Medicaid and health-care fraud and abuse, and how to identify and report scams.

MIPPA educates and provides application assistance to pay for the Medicare Part D plan and the Medicare Savings Program, which helps pay for the Medicare Part B premium and information on preventative services.

# Senior Care Act

---

Governor Mike Hayden introduced, and the Kansas Legislature established, the Senior Care Act (SCA) program to assist older Kansans who have functional limitations in self-care and independent living, but who are able to reside in a community based residence if some services are provided.

The SCA is for Kansas residents, age 60 or older. The SCA covers a wide array of services and supports, including attendant care, respite care, homemaker, chore services, and one-time services.

SCA services are offered on a sliding fee scale based on income and assets for customers who functionally qualify.

During State Fiscal Year 2020, the Senior Care Act Program served nearly 4,000 individuals each month.



# Aging & Disability Resource Centers

(ADRC)

The Aging & Disability Resource Centers (ADRC) are trusted sources of information where people of all ages, abilities, and income levels—and their caregivers—can go to obtain assistance in planning for their future long-term service and support needs. The ADRC is designed to empower adults and persons with disabilities to make informed choices about their services and supports. Services provided by the ADRCs include:

- **Options Counseling:** An options counselor can assist an individual by providing unbiased information that is relevant to the individual's needs, preferences, and goals.
- **Information, Referral, and Assistance:** The ADRCs operate a statewide call center staffed by individuals trained in community resource information. Information can be provided on in-home services, transportation, home delivered meals, etc...
- **Assessments:** For individuals interested in a Home and Community Based Services (HCBS) program, the ADRC can conduct the functional assessment needed to determine eligibility for the appropriate HCBS program. The ADRC can complete a CARE assessment prior to nursing facility admission.

# Administrative Case Management

Administrative Case Management provides eligibility and enrollment assistance to individuals who have been found functionally eligible for the Brain Injury, Physical Disability, and Frail Elderly waivers, as well as PACE.

- Administrative Case Management services launched statewide on May 1, 2020.

<b>Administrative Case Management</b>				
Month	# Unduplicated Served	# Units	# Hours	
May	108	595	148.75	
June	288	1,636	409.00	
July	316	1,879	469.75	
August	305	1,682	420.50	
September	410	1,976	494.00	
October	481	2,298	574.50	
Total	1,908	10,066	2,516.50	

# Home and Community Based Services and PACE



# Home and Community Based Service

## Frail Elderly (FE) Waiver

The Frail Elderly (FE) Waiver provides Kansas seniors an alternative to nursing home care. The program promotes independence within the community and helps to offer residency in the most integrated environment. Services available include personal care, assistance with household tasks and health/medical services.

To be eligible for the FE Waiver, an individual must meet the following criteria:

- Must be 65 years of age or older;
- Be financially eligible for Medicaid;
- Meet the Medicaid long-term care threshold.

The Aging and Disability Resource Centers (ADRCs) are the point of entry to the FE Waiver. The ADRC conducts the FE FAI assessment to determine functional eligibility for the FE Waiver.

The FE Waiver does not have a waitlist for services.

# Home and Community Based Service

## Brain Injury (BI) Waiver

The Brain Injury (BI) waiver program currently serves individuals who have sustained either an acquired or a traumatic brain injury and who would otherwise require institutionalization in a BI rehabilitation facility.

- This waiver program provides the services needed after injury to ensure that individuals can stay in their homes and be as independent as possible in a safe, healthy environment.
- The BI Program is not considered a long-term care program and is designed to be a rehabilitative program that provides therapies and services that allow the individual to improve and become able to rely less on supports as independence increases.

# Program of All-Inclusive Care for the Elderly

## PACE

The Program of All-Inclusive Care for the Elderly (PACE) program promotes quality, comprehensive health services for older adults. The primary care physicians and interdisciplinary team of professionals provide and coordinate all services for the individual, providing a “one-stop shop” for the individual's needs. Most services are provided in home and at the PACE Center.

Services provided through this comprehensive program include:

- On-Site Physician / Medical Supervision
- Nursing Care
- Physical Therapy
- Occupational Therapy
- Activities and Exercise
- Dentist

To be eligible for PACE, an individual must meet the following criteria:

- Be 55 years of age or older;
- Meet the Medicaid long-term care threshold;
- Can live safely in the community with the help of PACE services when you join;
- Live in the service area of a PACE organization.

The Aging and Disability Resource Centers (ADRCs) conduct the functional assessment to determine functional eligibility for the PACE program.

# Program of All-Inclusive Care for the Elderly

## PACE

### Via Christi Hope

- Sedgwick

### Midland Care

- Douglas
- Jackson
- Jefferson
- Leavenworth
- Lyon
- Marshall
- Nemaha
- Osage
- Shawnee
- Pottawatomie
- Wabaunsee
- Wyandotte

### Bluestem Communities

- McPherson
- Ottawa\*
- Saline
- Rice\*
- Marion
- Reno\*
- Harvey

\*PACE is available in limited zip codes within these counties.

# Nursing Facilities – Program and Survey





# Nursing Facility Program and Survey and Certification

KDADS is responsible for the inspection and licensing of adult care homes, as defined by K.S.A. 39-923. Through the Survey and Certification Commission is responsible for inspection and licensing of adult care homes including:

- 296 nursing facilities,
- 150 assisted living facilities,
- 182 home plus',
- 5 adult day cares, and
- 52 residential care facilities,
- 8 private psychiatric hospitals,
- 12 psychiatric residential treatment facilities,
- 28 community mental health centers, and
- substance use disorder treatment facilities as defined by KSA 39-2002.

# Priorities and Issues

## COVID-19 and Adult Care Homes

### Status of Required Adult Care Home Infection Control Surveys

- As of September 23, 2020 all Adult Care Homes have been surveyed for infection control policies, procedures and practices.

### Plan to return to regular survey activity

#### • Nursing Facilities

At this time survey activity for certified nursing facilities includes:

- Federal Infection Control Surveys as outlined in [QSO Memo 20-31 All](#)
- Complaint investigations that are triaged as Immediate Jeopardy, Non-Immediate Jeopardy-High or Non-Immediate Jeopardy-Medium

- Special Focus Facility and Special Focus Facility Candidate recertification surveys; and
- Recertification surveys in facilities where it has been over 15 months since the last standard survey
- Onsite revisits for surveys with end dates on, or after June 1, 2020
- State Licensed Only Adult Care Homes
  - Annual Licensure Surveys
  - Complaint Investigations that are triaged as Immediate Jeopardy, Non-Immediate Jeopardy-High or Non-Immediate Jeopardy-Medium
  - On-site Revisits
  - Initial Licensure Surveys

# Nursing Facility Program and Survey and Certification

---

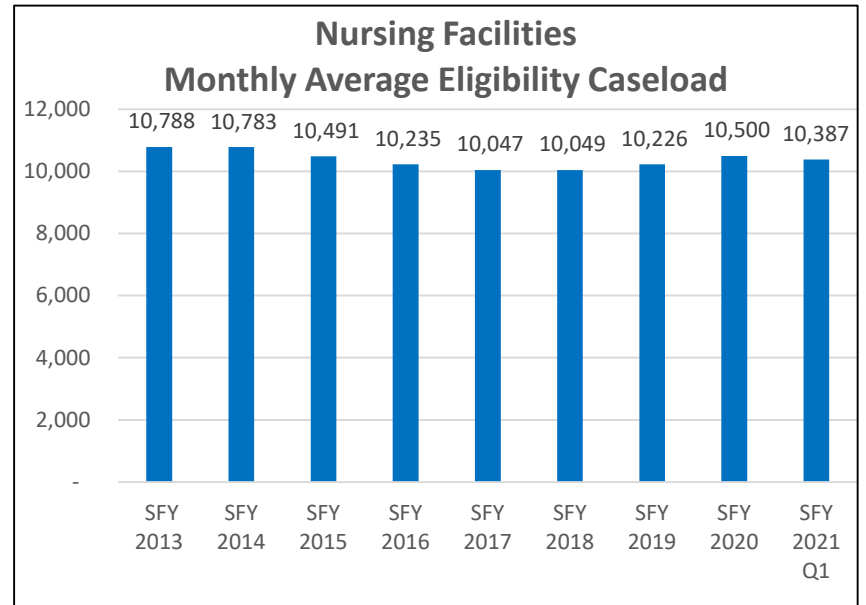
The Nursing Facility Program provides oversight of the following:

- Medicaid Enrollment
- Change of Ownerships
- Reimbursement/Rate Setting
- Auditing of Cost Reports
- Quality Care Assessment
- CMS Enforcement
- Ventilator Program
- PEAK 2.0

# Nursing Facilities Data

**Nursing Facilities  
Medicaid Participation**

Region	NF	NFMH	LTCU	Total
NE	75	6	4	85
NW	67		11	78
SE	74	3	3	80
SW	66	1	6	73
<b>Total</b>	<b>282</b>	<b>10</b>	<b>24</b>	<b>316</b>



# KDADS Services to Children



# Home and Community Based Service

## Autism Waiver

The Autism Waiver provides support and training to parents of children with an Autism Spectrum Disorder (ASD) diagnosis to help ensure children with ASD can remain in their family home. Children with an appropriate diagnosis, made by a licensed MD or PhD Psychologist, can be found eligible for the Autism Waiver for three years. An exception for a fourth year of services can be requested from the Autism Program Manager at KDADS.

To be eligible for the Autism Waiver, an individual must meet the following criteria:

- Must be 0-5 years of age;
- Diagnosed with an Autism Spectrum Disorder, Asperger's Syndrome, or a Pervasive Developmental Disorder—Not Otherwise Specified;
- Meet the level of care eligibility score;
- Be financially eligible for Medicaid.

The Autism Waiver offers three services designed to support families. These services include:

- Respite Care
- Family Adjustment Counseling
- Parent Support and Training (peer to peer) Provider

Additional Autism Services are available to all qualifying Medicaid recipients through the Medicaid State Plan. These services include:

- Interpersonal Communication Therapy
- Consultative Clinical and Therapeutic Services (Autism Specialist)
- Intensive Individual Supports

# Home and Community Based Service

## Serious Emotional Disturbance (SED) Waiver

The Serious Emotional Disturbance (SED) waiver provides children with some mental health conditions special intensive support so that they may remain in their homes and communities. The term “serious emotional disturbance” (SED) refers to a diagnosed mental health condition that substantially disrupts a child’s ability to function socially, academically, and/or emotionally.

To be eligible for the SED waiver, an individual must meet the following criteria:

- Be ages 4-18 years of age;
- Have a diagnosed mental health condition which substantially disrupts the ability to function socially, academically, and/or emotionally;
- Be at risk of inpatient psychiatric treatment;
- Be financially eligible for Medicaid;
- Meet CAFAS assessment threshold for eligibility.

The Community Mental Health Centers (CMHCs) are the point of entry for the SED waiver. The CMHCs conduct the CAFAS assessment to determine functional eligibility. Community Mental Health Centers (CMHCs) provide services covered by the program such as individual and group therapy, parent support and training, independent living skills to help waiver participants to continue their education and to eventually become employed and obtain transportation and housing.

- These services also include short-term respite care for the child’s family caregivers and direct support in the form of attendant care.
- Children in this waiver program are provided with a wraparound facilitator who works with their families and providers to set treatment goals and decide on specific services for the children and their families.

The SED Waiver does not have a waitlist for services.

# Home and Community Based Service

## SED Waiver continued

### SED Waiver Services

- Parent Support and Training
- Independent Living/Skills Building
- Short Term Respite Care
- Wraparound Facilitation
- Professional Resource Family Care
- Attendant Care

### Children served by the CMHCs can receive:

- Individual Therapy
- Family Therapy
- Early Childhood Intervention Programs
- Case Management
- Psychosocial Group
- Medication Management
- Crisis Services
- Many centers offer specialty programs for Autism, Anxiety, Transition Age Youth, Dual diagnosis, School based programs and many others dependent on local need.



# Home and Community Based Service

## Technology Assisted (TA) Waiver

The Technology Assisted (TA) waiver program serves individuals from birth through 21 years of age who are chronically ill or medically fragile and dependent upon a ventilator or other medical device to compensate for the loss of vital bodily function. Eligible individuals require substantial and on-going daily care by a nurse comparable to the level of care provided in a hospital setting to avert death or further disability.

- In addition to the medical technology dependency criteria, the child must meet nursing acuity needs criteria that identifies the level of skilled and unskilled care that is necessary to support the individual with care needs so that he/she may remain in his/her own home.

To be eligible for the TA Waiver, an individual must meet the following criteria:

- Meet the HCBS Technology Assisted Program definition;
- Require one or more of the identified primary medical technology(ies) and meet the minimum technology score for the specified age group;
- Meet the minimum nursing acuity level of care threshold for the specified age group;
- Be financially eligible for Medicaid.

There are multiple points of entry for the TA waiver including ADRC, hospitals, Children's Resource Connection, and the KDADS Program Manager. The MATLOC Eligibility Specialists determine functional eligibility via the MATLOC assessment.

The TA Waiver does not have a waitlist for services.

# SAMHSA Grant – System of Care Grant

10/1/2016 to 3/31/2021

- Over the four years of the grant 4027 Staff & Individuals across 4 CMHC's – Were Trained in wide variety Mental & Behavioral Health programs
- 608 Children received enhanced serves during the grant period
- The development of Parent Peer Support On-Line Modules were started and have a goal of 3/31/2021 to go live
- KDADS will be applying for next round of the SOC grant that will be awarded later this year

# SAMHSA Grant – System of Care Grant

10/1/2020 to 9/30/2021

- 11 participating CMHCs
- School Districts participating – invitation to participate went out 1/8/2021
- Training included – Teen Mental Health First Aid, Youth Mental Health First Aid, Attachment Based Family Therapy, PAX tools, Question Persuade Refer, Family Based Youth Suicide Risk Management, K-12 programs will be offered in coordination with Mental Health America, Drexel University, Mirror Inc and MDLogix .
- Kansas State University will be certified and will include ABFT in their training of Couple and Family Therapist
- Ft. Hays State University will include ABFT training in their Family Therapy
- Emporia State University will be certified and will include ABFT in their training of Couple and Family Therapist
- Youth Leaders in Kansas leadership training program
- KDADS has hired 2 additional staff to support this grant

- The licensed bed capacity in Kansas PRTFs has increased by 100 over the past year. There were 298 beds in the eight PRTFs at the beginning of 2020, and 398 currently. Due to the staffing of new units and COVID concerns the current statewide census is 300.
  - Kids TLC in Olathe had the largest increase in beds—from 61 to 111—and has designated the additional beds for children with issues identified as the most difficult to treat, who have traditionally spent the longest time on the waitlist.
  - Ember Hope Youthville in Newton plans to open a PRTF next month, adding twelve beds.
- The waitlist for children approved for PRTF treatment is now at 97 (20 in Foster Care), from a high of 209 (57 in Foster Care) in July 2019.

# Youth Leaders in Kansas

(YLINK)

- In the beginning of 2020, YLINK (Youth Leaders in Kansas) consisted of five community groups around the state and has since grown to 14, serving over 500 youth. We anticipate increasing this number in the coming year. Ylink holds regularly scheduled local, state-wide in person and virtual meetings.
- The groups are led and directed by youth, with support and guidance from adults.
- Collaborative partners include schools, community mental health centers, churches, and local prevention coalitions.
- Topics discussed are varied and decided upon by youth leaders and participants. Examples include bullying, LBGTQ issues, suicide and substance abuse prevention, and supporting foster care youth. They also take part in community service projects.
- KDADS is working to develop a Youth Advisory Council, this council will work in partnership with the Governor's Behavioral Health Service Planning Council (GBHSPC) and subcommittees to bring youth voice to the council.

# Prevention

---

- Kansas Prevention Collaborative-Community Initiative (KPCCI) Coalitions
- Kansas Strategic Prevention Framework Partnerships for Success 2015
- Kansas Suicide Prevention Plan completed for 2021-2025
- T21 Transition
- 988 Planning grant application submitted and plan to transition
- Synar 2020-Report was submitted December 2020 and Kansas was in compliance
- (State Suicide Prevention) SSP Coalition Development – The coalition is currently in the planning and develop stages with the establishment of a steering committee.
- Kansas Communities that Care Student Survey (KCTC) has been updated to respond to recommendations from community partners.

In June, KDADS began working closely with Governor Kelly's SPARK Recovery Office to receive dollars available from the CARES Act.

As of December, 2020, over \$81 million in SPARK/CARES dollars have been provided to KDADS for distribution to its stakeholders.

\$33.7 million to Nursing Facilities

\$8.9 million to Community Based providers, including Personal Protective Equipment and communication devices

\$19.2 million to Behavioral Health providers

\$18.9 million to Adult Care Homes for Personal Protective Equipment, communication devices, visitation equipment

\$0.4 million for administrative equipment

# DCF Programs Overview





# Major Program Areas

DCF

- Prevention and Protection Services
  - Child Protective Services
  - Foster Care Services
  - Adoption
  - Prevention Services
  - Adult Protective Services
- Economic and Employment Services
  - Food Assistance
  - LIEAP
  - Childcare Assistance
  - TANF Cash Assistance
- Child Support Services
- Vocational Rehabilitation

# The Child Welfare System

## GOVERNANCE

Federal Guidance

State Law and Policy

Best Practice Standards

Child welfare begins in the...

COMMUNITY

...with primary prevention.

# The Child Welfare System

## DCF PRIMARY FUNCTIONS

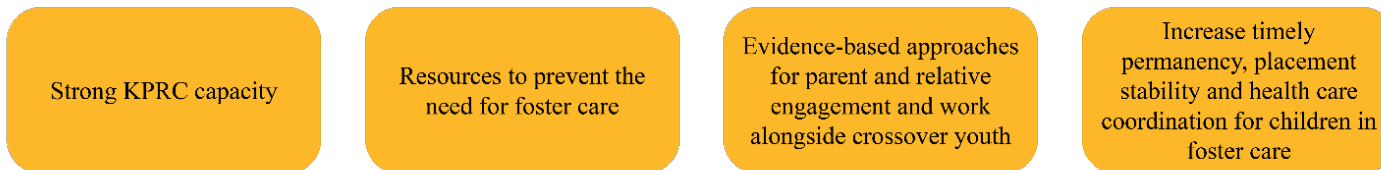


## PARTNERS



## STRATEGIES FOR PROTECTING CHILDREN

Strong safety, resiliency and prevention networks



# The Child Welfare System

Child welfare efforts are made possible by our **FOUNDATION.**

## **Strong Workforce:**

Recruit and develop child welfare workforce partnerships and practice implementation

## **Informed Decisions:**

Outcomes-based, safety- and data-informed alongside families in communities

## **Evidence-Based Practice that Engages Families:**

Mental Health, Substance Use, Parent Skill Building, Kinship Navigation

Our strategies for protecting children lead to our

## **GOALS AND SUCCESS FACTORS**



- Timely and consistent report screening, safety assessment and planning alongside families



- Collaborate to implement evidence-based prevention and child welfare programs
- Support families, relatives and youth to navigate systems for access to meaningful resources
- Increase children placed with relatives
- Collaborate to remove barriers to legal permanency



- Amplify university partnership for practicums and increase recruiting and job advertisement media

# Child Protective Services

---

- DCF receives and investigates reports of child abuse/neglect
- The Kansas Protection Report Center (KPRC) is the entity responsible for taking reports of alleged child abuse/neglect in the state of Kansas
- Receives reports of alleged abuse/neglect 24 hours-per-day, 7-days-per-week
- Reports are made via the toll free phone-number, web intake, fax, and mail
  - Phone: 1-800-922-5330

# Child Protective Services

- CPS Specialists investigate reports. Reports meeting criteria for investigation are assigned with one of the following assignment types:
  - Abuse/Neglect
  - Family in Need of Assessment (FINA)
- After the completion of an investigation a determination is made as to the allegations made in the initial report to the KPRC
- If there are reasonable grounds to believe abuse or neglect occurred DCF must take steps to protect the child(ren)'s well being
- The KPRC received 66,525 reports of alleged child abuse/neglect in FY 20
- 37,940 of these reports (57%) were assigned for investigation
  - 93.1% of reports investigated were unsubstantiated

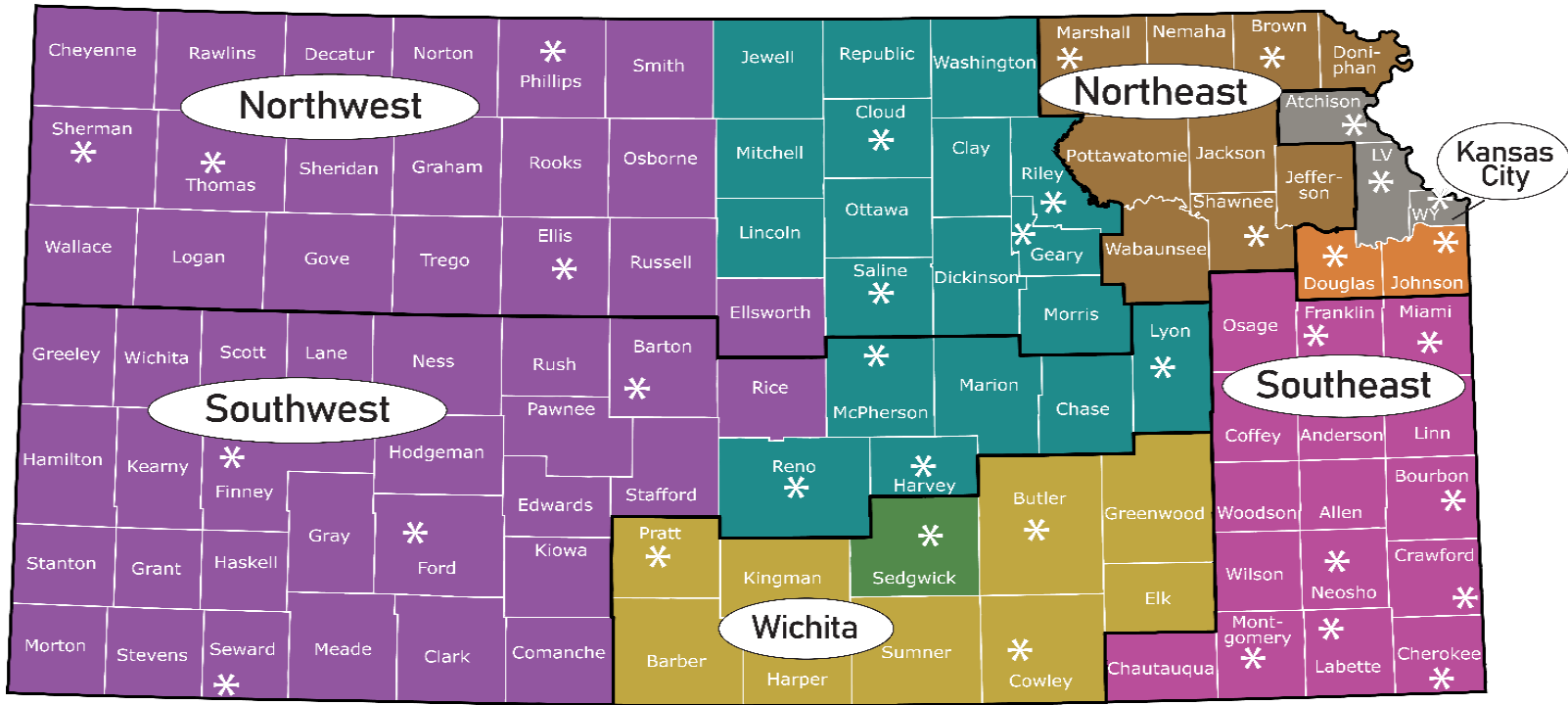
# Foster Care

---

- Foster care services are provided to children and families in cases when a court has found the child to be in need of care and the parents are not able to meet the needs of the children
- In these cases, the child(ren) come into the custody of the Secretary for Children and Families
- Foster Care Case Management grantees work with those in custody to support families, manage individual cases, and achieve case plan goals
- Four case management grantees:
  - Saint Francis Ministries
  - KVC Health Systems, Inc.
  - TFI Family Services
  - Cornerstones of Care

# Foster Care

## DCF Regions & Catchment Areas



- \* DCF Service Center
- AREA #1 *Saint Francis Ministries*
- AREA #2 *Saint Francis Ministries*
- AREA #3 *KVC*
- AREA #4 *TFI Family Services*
- AREA #5 *Cornerstones of Care*
- AREA #6 *KVC*
- AREA #7 *Saint Francis Ministries*
- AREA #8 *TFI Family Services*



# Foster Care

---

- Services provided by case management grantees include:
  - Initial and ongoing screenings and assessments
  - Facilitation and engagement for family meetings
  - Case plan development
  - Placement stability support
  - Facilitation of parenting time and parent/child interactions
  - Parent skill building
  - Coordination/referral to other services (ex: mental health, disability)
  - Coordination with MCOs

# Foster Care

- After a child has come into state care they will be placed in the setting most appropriate for their individual needs
- Placements are reimbursed by DCF based on the type and intensity of care they provide
- Types of placements include:
  - Family foster home
  - Relative placement
  - Residential facilities
  - Emergency shelters
  - QRTPs
  - Staff secure facilities
- In FY 2020, among youth in out of home placement...
  - ~ 51.8% were placed in a family foster home
  - ~ 34% were placed with a relative
  - ~ 8.4% were placed in a group or residential home
- DCF is responsible for the licensure and regulation of all 24-hour-per-day, seven-day-per-week child care facilities in Kansas

# Adoption

---

- Case plan goals for a youth in foster care could include reintegration with family, permanent guardianship/adoption, or other planned permanent living arrangement
- DCF strives to reintegrate families when safely possible, and most children in care return home (59%), but when it is not possible for a child to go back to the family the child becomes available for adoption
- Adoptions have increased in the past two years thanks to DCF efforts
  - Adoption Accelerators
  - 2020 Children's Bureau Adoption Call to Action

# Aging Out

---

- Youth that turn 18 while still in state custody are considered to have “aged out” of foster care
- 392 youth aged out in FY 2020
- DCF offers services to aged out youth to support them in their transition to self-sufficiency
- DCF engages with the Kansas Youth Advisory Council for feedback on the needs of youth who are or who have been involved in child welfare services

# Aging Out

---

- The DCF Independent Living program provides services and supports to youth for a successful transition to self-sufficiency
- Services are offered statewide through Independent Living Coordinators
- Eligibility determined by age and length of stay in state custody
- Services available include:
  - Tuition waivers for postsecondary education
  - Medical coverage through KanCare
  - Independent living subsidies
  - Basic Chafee
  - Education and Training Voucher Program

# Prevention Services

- Whenever a CPS Specialist is assigned a report, an assessment is completed with the family to determine if a referral to community-based or prevention services would be beneficial
- Family Preservation
  - Four grantees
    - DCCCA (KC and Wichita)
    - TFI Family Services (West)
    - Cornerstones of Care (East)
  - Two tiers of service to meet unique needs of each family
- Family First Prevention Services
  - 18 grantees
    - Mental Health
    - Substance Use Disorder
    - Kinship Navigation
    - Parental Skill Building
  - Evidence-based programs
  - 50/50 funding match from federal partners

# Family First

---

- The Family First Prevention Services Act (FFPSA), signed into law in 2018, provided new federal funding for prevention activities in child welfare
- FFPSA programs are designed to prevent the need for foster care and funding is available only for children at imminent risk of placement in foster care
- The act provides federal matching dollars for evidence-based services in the areas of:
  - Substance use disorder
  - Parent skill building
  - Mental health
  - Kinship navigation

# Family First

---

- In October of 2019 DCF awarded 17 agencies across the state with \$12.95 million in Family First prevention grants for FY 20
- Grant term awarded was October 1, 2019 through June 30, 2020 with an option for up to four one-year renewals
- DCF also awarded a FFPSA grant evaluation to the University of Kansas Center for Research, Inc to work with DCF prevention grantees to evaluate program data and outcomes



# Family First

---

- The 2020 legislature approved additional funds to expand FFPSA programs for FY 2021 but this enhancement was removed from the budget as part of the Governor's allotment process
- FFPSA budget to remain at FY 20 funding levels in FY 21
- Outcomes from 10/01/2019 to 10/30/2020:
  - 1014 families referred
  - 93.9% of families referred remained together with no need for foster care
  - 15.7% decrease in number of children removed into out of home placement from FY 19 to FY 20

# Adult Protective Services

- DCF's Adult Protective Services program receives and responds to reports of abuse, neglect or exploitation of adults in the community
- Like with CPS, reports of adult abuse/neglect are made to the KPRC via the toll free phone-number, web intake, fax, and mail
  - Phone: 1-800-922-5330
- Reports are investigated and, if needed, intervention actions are taken to safeguard the safety, wellbeing, and general welfare of adults in need of protection
- The KPRC received 17,697 reports of Adult abuse/neglect in FY 20
- 10,235 (58%) of these reports were assigned for investigation
  - 75.2% of these reports were unsubstantiated

# Economic and Employment Services

- DCF administers economic support programs that provide benefits that support children and families
- These programs can be applied for at DCF Service Centers or online at: [www.dcf.ks.gov](http://www.dcf.ks.gov)
- Food Assistance
  - DCF administers the USDA's Supplemental Nutrition Assistance Program (SNAP) in Kansas
  - This program provides qualifying low-income households with monthly benefits for food via an EBT card
- FY 20:
  - Average monthly benefit: \$121.10
  - Averaged 94,116 cases per month
- Low Income Energy Assistance Program
  - The Low Income Energy Assistance Program (LIEAP) provides qualifying families an annual benefit to help pay winter heating bills
  - In 2020 about 34,000 homes received an average benefit of \$960

# Economic and Employment Services

- Childcare Assistance
  - The Childcare Assistance program helps families pay for childcare costs
  - In order to be eligible families must have an income at or below 185% of the federal poverty level and must be employed at least 20 hours a week or engaged in a work program
  - Most families must contribute a share of expenses and assistance amount varies based on individual circumstances and income
  - FY 20:
    - Average monthly benefit: \$430.20
    - Averaged 5,474 cases per month
- Cash Assistance
  - The Temporary Assistance for Needy Families (TANF) program provides monthly cash benefits to low-income families that qualify
  - To qualify, a family must have a child in the home, be employed or engaged in a work program, and meet income and limited resources requirements
  - Eligibility limited to 24 months in a lifetime
  - FY 20:
    - Average monthly benefit: \$111
    - Averaged 4,033 cases per month

# Child Support Services

- Kansas Child Support Services helps ensure families and children receive financial support
- Services include establishing parentage and orders for child support, locating noncustodial parents and their property, enforcing child supports orders, and modifying support orders as appropriate
- CSS is mandatory for families receiving TANF, foster care, food assistance, medical assistance and child care assistance. Assistance is also available to any family who applies for services regardless of income

## Four Full Service Contractors:

- YoungWilliams CSS
- Sunflower Child Support Services
- 18<sup>th</sup> Judicial District Court Trustee
- KS Child Support Services, LLC

## FY 20:

- 129,489 IV-D cases
- \$223,217,869 IV-D Dollars Distributed

# Kansas Rehabilitation Services

- Kansas Rehabilitation Services (KRS) is the state's Vocational Rehabilitation agency
- KRS works in partnership with Kansans with disabilities to achieve their goals for employment, independence and self-reliance
- Services include:
  - Vocational Rehabilitation Services – provides job counseling, training, physical/mental restoration services, and other services to assist Kansans with disabilities in achieving and maintaining employment
  - Pre-Employment Transition Services (Pre-ETS)- provides job exploration, counseling and other services to students ages 16-21 who are receiving services under an Individual Education Plan (IEP) or 504 Plan, or have a disability

# DCF Program Updates & Priorities



# Pandemic-EBT

---

- The Pandemic-EBT program, authorized by federal Covid relief legislation, provides benefits to families whose children would have received free or reduced-price meals if the pandemic had not required schools to shut down
- In 2020, DCF worked with KSDE to distribute \$48 million in P-EBT benefits to over 160,000 Kansas families
- Program continues through the 2020-21 school year



# Hero Relief Program

---

- Using CARES Act funds DCF created the Hero Relief Program which provided grants to childcare providers to continue their operations during the pandemic
- The program also provided childcare benefits to families of essential workers between May and October
- DCF distributed more than \$10 million in grants and benefits

# Class Action Settlement

- A class action lawsuit was filed in 2018 by Kansas Appleseed, Children's Rights and the National Center for Youth Law on behalf of named plaintiffs against the Governor, DCF, KDADS, and KDHE
- On July 8<sup>th</sup>, 2020 DCF announced that defendants have agreed to a settlement agreement
- Agreement set forth three categories of requirements for DCF to address including
  - Practice Improvements
  - Outcomes
  - Accountability reporting and implementation
- Work has already been underway on many of these requirements the past two years

# Class Action Settlement

## At-A-Glance

### Accountability Reporting & Implementation

- Within 30 days of order, amend foster care provider agreements to include practice improvements and outcomes.
- Within 6 mos. of order, develop independent advisory group to inform action planning and improvement.
- Report and validate # and placement duration of youth placed in detention or juvenile justice placement & foster care caseloads.
- Validate performance data through a neutral entity.
- Annual Reporting Periods Jan-Dec, 2021-23 or possibly 2024 for 2 outcomes.

### Practice Improvements

- Achieve Substantial Compliance by Oct 31, 2021 and sustain for 12 months with:
- End the use of offices for overnight stays.
- Ensure no placement exceeds its licensed capacity without an approved policy exception.
- No delay in authorizing mental health treatment.
- Ensure Crisis Intervention Services statewide.
- End night to night placements with exception to those deemed appropriate by CFSR placement stability standards by 12/21. End short term placements that are 14 days or shorter by 12/23.

### Outcomes

- Sustain final outcome for 12 months.
- Placement stability for children entering care at a rate of 4.44 moves or fewer per 1,000 days in care.
- Children have initial trauma and mental health screen within 30 days of entering care.
- 90% of children have their mental health needs addressed as measured in federal case review.
- 90% of children are in a stable placement as measured in federal case review.
- Children in care in 12 month reporting period have 1 or fewer moves in the past 12 months.

# Mobile Crisis Response

- DCF to award a contract for crisis intervention triage, mobile response and stabilization and referral services for all children and adults age 18-21 who have exited foster care
- Families or youth will be able to contact a centralized crisis care line 24/7 to request a crisis assessment and support
- Families are provided resources and skills to resolve issues and connect to service providers for ongoing issues
- Mobile response reduces crisis use of hospital emergency departments and LE response while giving entire state access

# Kansas Practice Model

---

- The Kansas Practice Model (KPM) is a customized and integrated practice model designed to enhance our services to Kansas families and children
- Rolled out across the state in 2020
- Works to engage families to help them keep their children safe and prevent unnecessary removals
- KPM includes several new practice models including
  - Team Decision Making
  - Signs of Safety
  - Family Finding

# Kin First

---

- A Kinship placement is when a family member or other close connection provides care for a youth in the foster care system
- According to Casey Family Programs, compared to youth in non-relative foster care, children in kinship care have:
  - Greater placement stability
  - Lower rates of reoccurring maltreatment
  - Better behavioral and mental health
- Kin First: if children need to be removed from their homes, seek to make every child's first, and hopefully only, placement with kin
- DCF will continue to place an emphasis on keeping children safely with kin

# TANF Grants

---

- DCF awarded TANF Youth and Family Stability grants to eight agencies in 2020
- The grants increase access to family support programs that provide stability during these uncertain times
- Grantees will work to reduce poverty by providing primary prevention and early intervention services to prevent youth from engaging in high-risk behaviors

# Links to Quality

---

- DCF completed a two-year pilot of Links to Quality, a program which aims to support early childhood care and education professionals by recognizing and building on the strengths of their program to provide higher quality childcare
- 37 childcare facilities across the state participated, working on three “Links” – Program Leadership, Family Partnership, and Learning & Development
- Participants provided DCF staff feedback about processes, content, and their overall experience throughout the pilot
- Feedback will be used to benefit future participants and contribute to strengthening the early childhood profession